

Begin Every Manufacturing Process with a Fast, Accurate Estimate

Gain the flexibility to create detailed manufacturing estimates quickly. With the Estimating module, part of the Acumatica Manufacturing Edition, you can improve the accuracy and turnaround times of all your manufacturing estimates. This solution takes into account every aspect of estimating, including material, overhead, labor, and other miscellaneous costs.

Once you confirm an estimate, you can easily convert it to a bill of material or sales order. Your team can calculate costs and prices for new or existing parts using data such as material costs, work center rates, and overheads. Save even more time with the option of linking your estimate to a quote or opportunity.

The screenshot shows the 'Estimating' module in Acumatica. The main form is titled 'New York - Estimate' and contains the following fields and values:

- Estimate ID: EST0000000010
- Inventory ID: WIDGET
- Item Desc: Widget Item
- Estimate Class: WIDGET
- Fix Labor Cost: 0.000000
- Var Labor Cost: 212.500000
- Machine Cost: 0.000000
- Material Cost: 0.000000
- Tool Cost: 352.750000
- Fix Overhead Cost: 0.000000
- Var Overhead Cost: 230.000000
- Total Cost: 795.250000

Additional fields include Revision (1), Status (Active), Revision Date (1/15/2016), Item Class (152ST), Warehouse (WHOLESALE - Wholesale w), Owner (E00000002 - Baker Maxwell), Engineer (E00000004 - Becher, Josep), Request Date (1/29/2016), Promise Date (1/29/2016), and Lead Time (14). There are 'Override' checkboxes for several cost fields.

At the bottom, there is a table with columns: Operation, Work Center, Operation Desc, Setup Time, Run Time, Run Rate, Machine Time, Machine Rate, Queue Time, Backflush Labor, Fix Labor Cost, and Fixed Labor Override.

Calculate costs and prices for new or existing parts using material costs, work center rates, and overheads.

KEY BENEFITS

INCREASE YOUR FLEXIBILITY

- Prepare estimates for existing or custom items. Create a simple, quick summary estimate or a detailed estimate using a bill of material structure

CREATE NEW ESTIMATES IN SECONDS

- Create a new estimate by simply copying or modifying an existing estimate, bill of material, or production order bill of material

GAIN CONTROL OVER REVISIONS

- Make multiple revisions of the same estimate while maintaining a history of the revisions and who created them. Generate more accurate estimates of expected labor, material, and overhead costs

ESTIMATING FEATURES AND CAPABILITIES

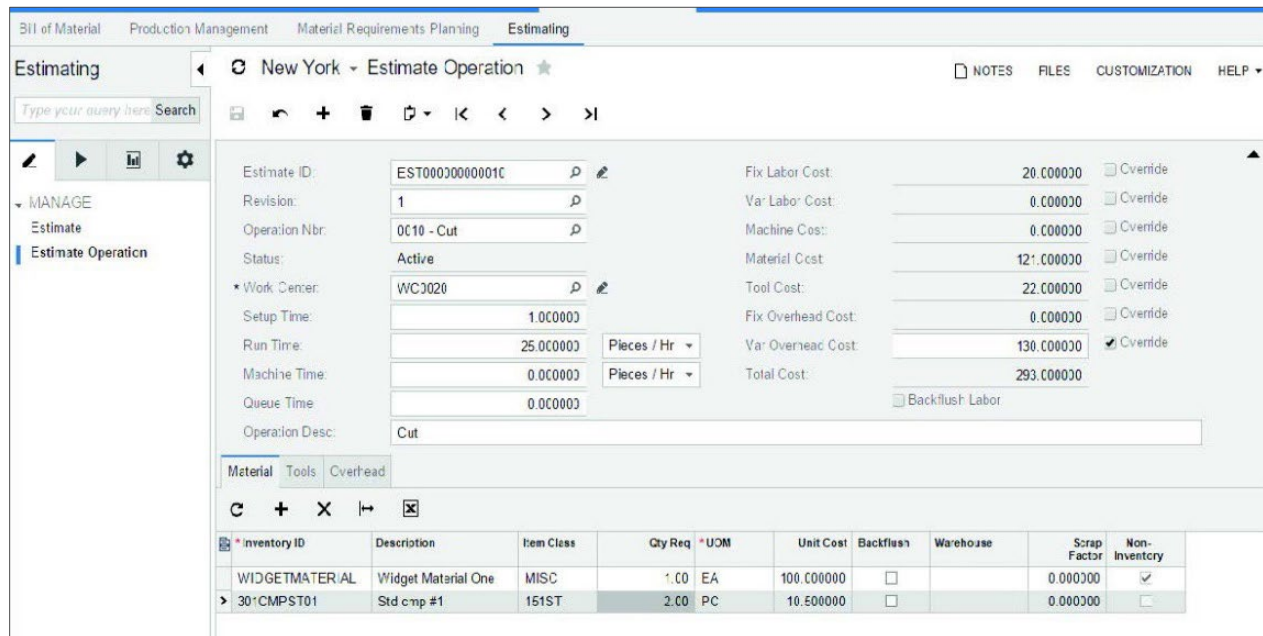
Estimate Non-Inventory Items Estimate items not currently in your inventory. Attach notes, files, and item attributes to the estimate.

Create New Inventory Items Easily convert non-inventory items to inventory stock or non-stock items. Create inventory items and generate a bill of material from an estimate.

Create Production Order Create a production order directly from an estimate.

Sales Integration Attach an estimate directly to, or against, a sales order or an opportunity in Acumatica Customer Management. Create a sales order directly from the estimate.

Multiple Sites Easily create estimates from all your company locations.



For More Information, Please Contact:

DSD Business Systems

Tel: 800-627-9032

Email:

info@dsdinc.com

www.dsdinc.com