



DSD Business Systems

Sage 100 Enhancements

LMSN

SQL to non-SQL Migration Utility

Version 7.40



Information in this document is subject to change without notice.

Copyright 1993-2024, DSD Business Systems All rights reserved.

SQL to non-SQL Migration Utility User's Manual
Version 7.40

10 February, 2026

DSD Business Systems
5120 Shoreham Place
Suite 280
San Diego, CA 92122
858/550-5900 8:00am to 5:00pm PST
858/550-4900 Fax

Trademarks

ProvideX® is a Trademark of Sage Software.

Windows is a trademark of Microsoft Corporation.

Sage 100® is a registered trademark of Sage Software.

PXPlus® is a registered trademark of PVX Plus technologies

All other product names and brand names are service marks, and/or trademarks or registered trademarks of their respective companies.

This documentation and the software described herein, is prepared and published under license. Sage Software has not tested or verified either the software or any representation in this documentation regarding the software. Sage Software does not make any warranty with respect to either this documentation or the software described herein, and specifically disclaims any warranty, express or implied, with respect hereto, including the warranties of fitness for a particular purpose and merchantability.

Table of Contents

SECTION A: INTRODUCTION	5
WEB RESOURCES.....	5
SUPPORT	5
SQL TO NON-SQL MIGRATION UTILITY FEATURES	6
SECTION B: GETTING STARTED	7
REQUIRED LEVELS.....	7
INSTALLATION.....	7
DSD ENHANCEMENT CONTROL PANEL.....	9
SECTION C: PRE-MIGRATION STEPS	11
SECTION D: USING THE SQL TO NON-SQL MIGRATION UTILITY	12
ACCESSING THE SQL TO NON-SQL MIGRATION UTILITY	12
SELECTION OF THE NON-SQL MAS90/MAS200 SYSTEM.....	12
COMPLETION OF MIGRATION.....	13
MIGRATION LOG FILE.....	13
SECTION E: POST MIGRATION STEPS	15
USER-DEFINED FIELDS (UDF'S) AND CUSTOMIZED PANELS (CUSTOMIZER)	15
CUSTOMIZED CRYSTAL FORMS.....	15
USING THE MIGRATION UTILITY MULTIPLE TIMES	15
LICENSE AGREEMENT	16
FAX TRANSMITTAL FORM	18

Section A: Introduction

This manual contains a description and instructions for this DSD product. Operating instructions are included for the features added by this product to Sage 100. For instructions on using Sage 100, refer to the appropriate Sage 100 manual, or call your Sage 100 reseller. DSD Business Systems offers excellent Sage 100 support, at an hourly rate.

Web Resources

DSD web site: <http://www.dsdinc.com>

The Enhancement page contains:

- Current Release Schedule*
- Purchasing Information*
- Installation Instructions*
- Product Support*
- Enhancement Links*

LMSN SQL to non-SQL Migration Utility:

<http://www.dsdinc.com/enh/pages/LMSN.htm>

The product web page contains:

- Product Description*
- Web Links*
- Current Product Version Table*
- Product Installation File Download*
- Product Manual in .pdf Format*
- Revision History*
- FAQ*

Support

DSD provides product support through Sage 100 resellers. Support is provided for the current version. Older versions are supported at an hourly rate. DSD's telephone number is **858-550-5900**. Fax: **858-550-4900**.

For a hard error, where the program displays an error dialog, report:

- Error number.*
- Program name.*
- Line number.*
- Program version.*

*Exact sequence that caused the error, including menus and menu selections.
Other pertinent information.*

If leaving a message or faxing, please include:

Your name.

Your phone number (and fax if applicable) and extension.

It is possible to be unable to duplicate a problem, because of data corruption or because we have not exactly duplicated a particular operating environment. In such circumstances, we can only continue to try to fix the problem if we can either access the system with Symantec PCAnywhere or by some other means access or duplicate the system.

SQL to non-SQL Migration Utility Features

The SQL to non-SQL Migration Utility can be installed on a Sage 100 Premium (SQL) system, and allows the user to select a non-SQL Sage 100 system to copy data to. The utility allows selection of a Company Code to copy.

After completion of the migration, a Migration Log is available for the user to view which files were migrated, and how many records in each of those files were copied.

Section B: Getting Started

CAUTION

- **If you reinstall or upgrade one of the Sage 100 modules listed in the following table, you must also reinstall this Enhancement.**
- Enhancements from different Sage Developers are generally not designed to work together. If installed together, problems are likely to occur.
- **Check with DSD before installing more than one Enhancement.**

Required Levels

Sage 100 Module	Module Required	Required Level
L/M	Y	7.40

Installation

1. **Back-up:** Exit all Sage 100 sessions. Back-up existing Sage 100 data.
2. **Check Levels:** Sage 100 module levels **must match** those listed above.
3. **Run Enhancement Setup Program:** Save the executable installation program (sent to you or downloaded from our website) in a convenient location on the Sage 100 server. Launch the program from Windows Explorer or by selecting Start/Run, and then browse for the file in the location you saved it. Follow on-screen instructions.
4. **Send your Sage Serial Number to your DSD Representative:** Send your Sage Serial Number to your DSD representative in order for us to send you back the encrypted keys to unlock your system. This serial number can be found in Library Master\Setup\System Configuration, Tab 3. Registration as Serial Number.
5. **Re-Start Sage 100:** Sage 100 will be updated.
6. **Unlock the Enhancement:** DSD Enhancements must be unlocked to run. When any part of the Enhancement is run for the first time, the **DSD Enhancement License Agreement and Activation** window will appear. Follow the steps shown on that window. *You can click the Help button for more detailed instructions.*

Note: On the next page is a screenshot of the DSD Enhancement License Agreement and Activation window.

After accepting the License Agreement, you can then select the type of unlocking that you'd prefer. The choices are File, Web, Demo and Manual Entry.

File Unlock: After receiving your encrypted serial number key file from DSD, and placing that file in the MAS90/SOA directory, selecting this option will unlock all products keys contained in the file. This means you can unlock all enhancements at once using this option.

Web Unlock: If the system that is running the DSD Enhancement *has web access* and you *have sent DSD your Sage Serial number*, you can unlock the Enhancement without assistance using Web Unlock. When this option is selected, the program will attempt to download

encrypted serial number key file from DSD *and then proceed to unlock all enhancements contained in the file.*

- *The Sage 100 system that is being used must have web access for this option to be effective.*
- *You can send your Sage Serial Number to your DSD Enhancements sales representative.*

Demo Unlock: If a Demo mode is available for the Enhancement you're running, you will be able to Demo unlock the product without assistance from DSD for demo purposes.

- *Creating a Demo Unlock is a good way to temporarily unlock DSD Enhancements off-hours, if you do not have web or email access. Later, you can unlock the product fully, during business hours.*

Manual Entry Unlock: If you want to unlock a single enhancement using a single encrypted key, you can select this option and enter the 64 character key you receive from DSD by copy and paste.

Note: *You can also unlock a DSD Enhancement through the **DSD Enhancement Control Panel** found on the **Library Master Utilities Menu**. Then, select the Enhancement with your mouse from the list of Enhancements and click the **Unlock Product** button on the right side of the window.*

7. **Convert Data:** After registration, the Data Conversion window will appear. Follow on-screen instructions to complete data conversion. *You can exit the conversion program without converting data. The Enhancement will not proceed, however, until data is converted. If you enter an enhanced program and data has not been converted, the conversion program will run again.*

DSD Enhancement Control Panel

Starting with version 3.61, all DSD Enhancement products include DSD's Enhancement Control Panel. The **DSD Enhancement Control Panel** is accessed from the **Library Master Utilities** menu.

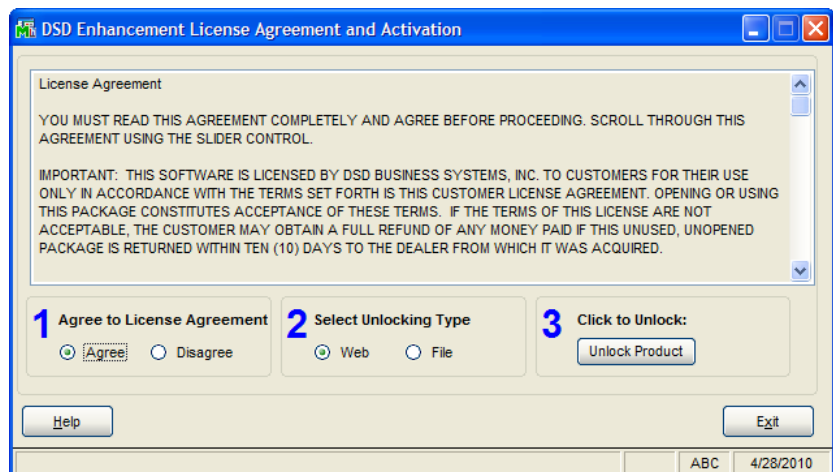
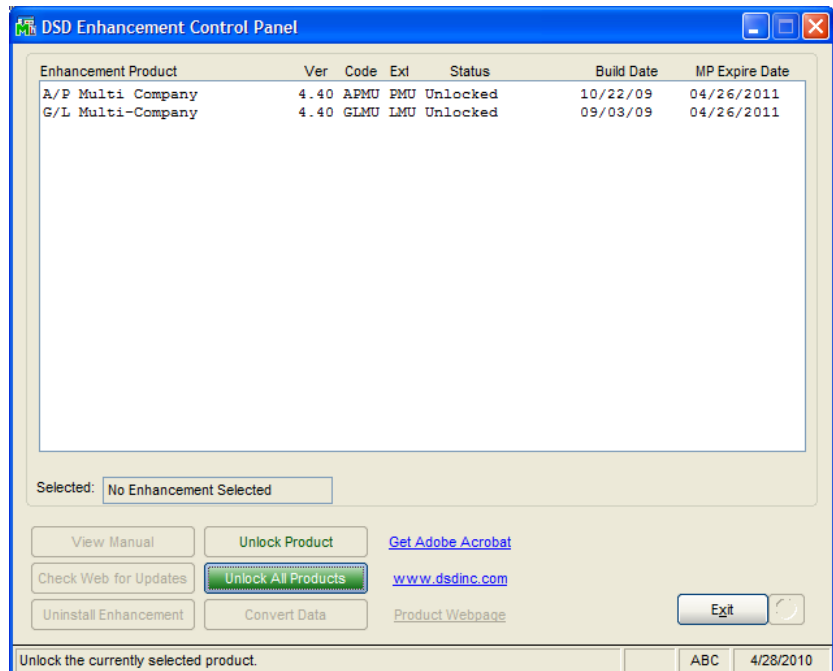
The DSD Enhancement Control Panel is a simple to use yet powerful system to help maintain DSD Enhancements installed on a Sage 100 system. To use it, select an Enhancement product from the list on the window and then click the button, on the right side of the window, which corresponds with the desired task.

View Manual: This button will display the product manual for the selected Enhancement using Adobe Acrobat. For this to be possible, the PDF file for the corresponding manual must be in the "MAS90/PDF" folder in the Sage 100 system. If the file is not present, and the system has web access, the correct PDF file will be automatically downloaded from the DSD website, put into the "MAS90/PDF" folder and then displayed.

Check the Web for Updates: This button will check the DSD website to see what the current build is the selected Enhancement and alert the user if a later version is available. *This requires an FTP web connection on the Sage 100 system.*

Unlock Product: This will cause the DSD Enhancement License Agreement and Activation window to appear. Using this window is described on the previous page. *This button is disabled if the selected Enhancement is already unlocked.*

Unlock All Products: This will cause the DSD Enhancement All License Agreement and Activation window to appear. This window is similar to the one described on the previous page, but has only web and file as options to unlock. *This button is never disabled.*



Convert Data: After verification, the selected Enhancements data conversion program will run. Data conversion is non-destructive, and may be triggered any number of times. Sometimes this is required to fix data records imported or updated from a non-enhancement installation.

Help: The Help button, located at the bottom right of the window, opens an HTML help file .

Get Adobe Acrobat: Opens the Adobe Acrobat website to the page where Acrobat can be downloaded and installed.

Uninstall Enhancement If this option is available, then selecting this button will start the un-install process, removing the enhancement from the system.

There are also links to the DSD website and the Enhancement page on that site.

Section C: Pre-Migration Steps

Before you can use the SQL to non-SQL Migration Utility, you must first install and setup the **non-SQL Sage 100 System**.

Note: DSD Business Systems does not supply the non-SQL Sage 100 software. You must obtain this from a certified Sage Reseller.

Once you have installed and setup the non-SQL Sage 100 system, you'll need to do the following setup in Company Maintenance (in the non-SQL System):

1. Setup the Company Codes that you want to migrate.
2. Activate the modules for each company that you want to migrate.

Note: DSD Business Systems does not provide support on setting up the non-SQL Sage 100 system. This support can be provided by Sage Software, or by the user's certified Sage Reseller.

Section D: Using the SQL to non-SQL Migration Utility

Accessing the SQL to non-SQL Migration Utility

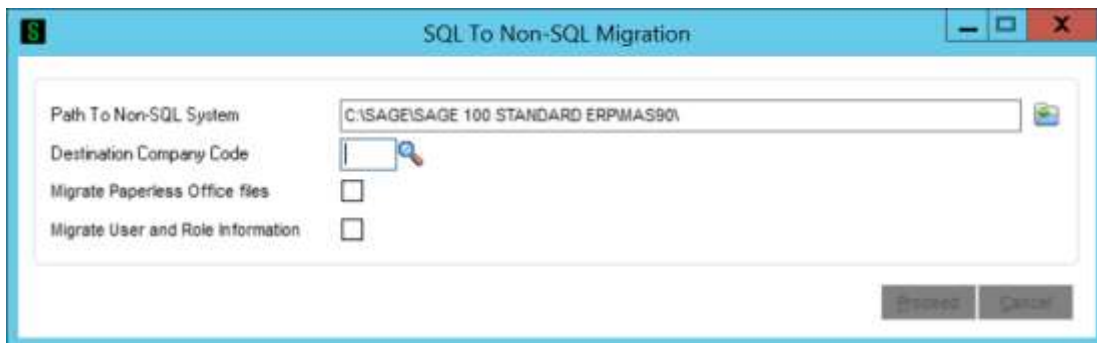
You will log into the SQL Sage 100 system to run the utility. There can be no other users in the system while the utility is running.

The SQL to non-SQL Migration Utility is available on the **Library Master Utilities Menu**.

Note: You must log into the Company you intend to migrate before proceeding.

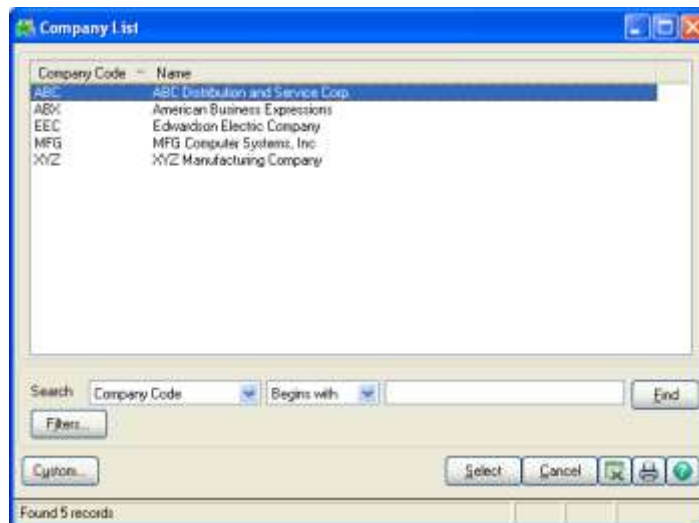
Note: The Sage 100 SQL and Non-SQL instances must be the same versions when performing the migration.

Selection of the non-SQL MAS90/MAS200 system



Path to non SQL MAS90: Enter the path to the MAS90 directory of the non-SQL system. A **Folder Button** is available to find the directory. An example of a valid MAS90 path is M:\MAS90 or C:\Program Files\Sage\MAS90. (Note that there is no backslash “\” after the “MAS90”.

Destination Company Code: Enter the Destination Company Code or select one from the lookup.



Migrate Paperless Office Files: Select this option to enable the copying of the following Paperless Office system tables:

OL_DefaultDocuments, PL_EmailMessage, PL_Form, PL_JournalPDFLog,
PL_JournalRegister, PL_PeriodEndPDFLog, PL_PeriodEndReport, PL_Report,
PL_ReportDeliveryPDFLog, and PL_ReportPDFLog

Migrate User and Role Information: Select this option to enable the copying of the following Sage100 System tables:

SY_Role, SY_RoleSecurity and SY_User.

Proceed: Select this button to start the next phase of the migration. After this button is selected, the utility will scan both SQL and non-SQL systems to determine which Module / Files to migrate for that Company Code.

Cancel Button: Select this button to Exit the utility.

After migration is started, a “meter bar” display will show each file as it is migrated.

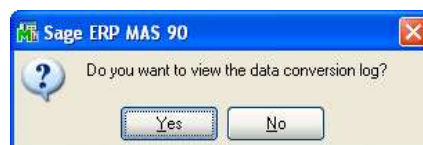
Note: *The migration process may take a while to complete.*

Completion of Migration

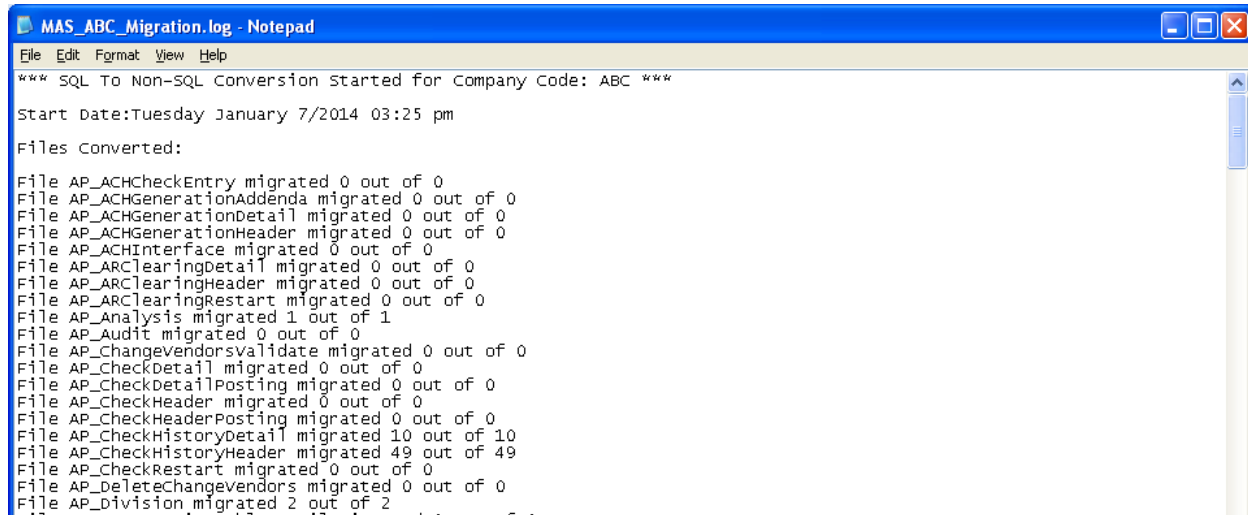
After the migration has completed, the following prompt is displayed. Selecting the OK button will exit to printing the conversion log.



Migration Log file



The Migration Log file will be created in the MAS_XXX directory of the SQL MAS200 system. The file name is MAS_XXX_Migration.log. An example of the log file is displayed below:



```
File Edit Format View Help
*** SQL To Non-SQL Conversion Started for Company Code: ABC ***
Start Date:Tuesday January 7/2014 03:25 pm
Files Converted:
File AP_ACHCheckEntry migrated 0 out of 0
File AP_ACHGenerationAddenda migrated 0 out of 0
File AP_ACHGenerationDetail migrated 0 out of 0
File AP_ACHGenerationHeader migrated 0 out of 0
File AP_ACHInterface migrated 0 out of 0
File AP_ARClearingDetail migrated 0 out of 0
File AP_ARClearingHeader migrated 0 out of 0
File AP_ARClearingRestart migrated 0 out of 0
File AP_Analysis migrated 1 out of 1
File AP_Audit migrated 0 out of 0
File AP_Changevendorsvalidate migrated 0 out of 0
File AP_CheckDetail migrated 0 out of 0
File AP_CheckDetailPosting migrated 0 out of 0
File AP_CheckHeader migrated 0 out of 0
File AP_CheckHeaderPosting migrated 0 out of 0
File AP_CheckHistoryDetail migrated 10 out of 10
File AP_CheckHistoryHeader migrated 49 out of 49
File AP_CheckRestart migrated 0 out of 0
File AP_Deletechangevendors migrated 0 out of 0
File AP_Division migrated 2 out of 2
```

Note: Please Review the next section on Post-Migration Steps.

Section E: Post Migration Steps

User-Defined Fields (UDF's) and Customized Panels (Customizer)

If you do not have the Custom Office module installed in your SQL MAS200 system, or if you do, but you do not have User-Defined fields set up or Customizer changes, then you may skip this section.

The **SQL to non-SQL Migration Utility** will **NOT** migrate any System files, and therefore will not transfer Custom Office Settings to the non-SQL System. However, you can achieve this by using the Custom Office Utilities to Export the Custom Office settings (such as UDFs and UDTs) from the Sage 10 Premium (SQL) System, and then using the Custom Office Utilities on the non-SQL system to Import in those settings.

Customized Crystal Forms

This utility does not copy customized Crystal Forms, and must be manually copied. These reports exist in the MAS90\REPORTS directory.

Using the Migration Utility multiple times

You may run this utility multiple times (i.e. if there are reported errors on the Migration Log).

IMPORTANT: If you run the migration, and then use the SQL system to process more data, you cannot re-run the migration utility without doing the following:

1. Exit the SQL MAS200 system.
2. Enter the non-SQL system.
3. Delete the Company Code(s) that processing was done for.
4. Re-Setup the Company Code(s), and then reactivate the appropriate modules.

License Agreement

IMPORTANT: THIS SOFTWARE IS LICENSED BY DSD BUSINESS SYSTEMS, INC. TO CUSTOMERS FOR THEIR USE ONLY IN ACCORDANCE WITH THE TERMS SET FORTH IN THIS CUSTOMER LICENSE AGREEMENT. OPENING OR USING THIS PACKAGE CONSTITUTES ACCEPTANCE OF THESE TERMS. IF THE TERMS OF THIS LICENSE ARE NOT ACCEPTABLE, THE CUSTOMER MAY OBTAIN A FULL REFUND OF ANY MONEY PAID IF THIS UNUSED, UNOPENED PACKAGE IS RETURNED WITHIN TEN (10) DAYS TO THE DEALER FROM WHICH IT WAS ACQUIRED.

1. **LICENSE. DSD BUSINESS SYSTEMS, INC.**, a California corporation as Licensor and owner hereby agrees to grant you as Licensee a non-exclusive license to use the enclosed software subject to the terms and restrictions set forth in this License Agreement. Title in and ownership of all programs and program enhancements or modifications written by DSD Business Systems, Inc. shall remain at all times vested in DSD Business Systems, Inc. The right granted by this Customer License Agreement and your payment of the non-refundable License fee is the right to use the Program in accordance with the terms of this Customer License Agreement. Delivery of a copy of the Program to you is made solely to enable you to exercise this right.
2. **COPYRIGHT.** This Program is copyrighted and all rights are reserved by DSD BUSINESS SYSTEMS, INC. and SAGE, INC. You may not copy or reproduce any part of the Program except to copy the Program for backup purposes. If you make a backup copy you must reproduce and include the copyright notice on it. The distribution of the product is intended for the use of the original Licensee only and for use only on the computer systems specified. Lawful users of this Program are hereby licensed only to read the Program from its medium into the memory of a computer only for the purpose of executing the program.

The documentation is also copyrighted and all rights are reserved. This document may not, in whole or in part, be copied, photocopied, reproduced, translated, transmitted or reduced to any electronic medium of machine readable form without prior consent, in writing, from DSD BUSINESS SYSTEMS, INC.

The Licensee recognizes that DSD BUSINESS SYSTEMS, INC. has expended considerable time, effort and money to develop the licensed Software and Manual and that DSD BUSINESS SYSTEMS, INC. will be substantially damaged by its unauthorized use, sale or distribution. In addition to recovery of all damages and the obtaining of injunctive relief as provided by law, in the event legal action must be taken to enforce this provision, the Licensee will pay DSD BUSINESS SYSTEMS, INC. all reasonable legal fees incurred in enforcing the rights of DSD BUSINESS SYSTEMS, INC. under this provision.

3. **RESTRICTIONS ON USE AND TRANSFER.** The original and any backup copies of the Program and its documentation are to be used only in connection with a single computer or network fileserver. You may physically transfer the Program from one computer to another, provided that the Program is used in connection with only one computer or network fileserver at a time. You may not distribute copies of the Program Documentation to others. The Program is to be used exclusively for business purposes and not for personal, family or household use. YOU MAY NOT USE, COPY, MODIFY, OR TRANSFER THE PROGRAM, IN WHOLE OR IN PART, EXCEPT AS EXPRESSLY PROVIDED FOR IN THIS LICENSE AGREEMENT. IN ADDITION YOU MAY NOT MODIFY, ADAPT, TRANSLATE, REVERSE ENGINEER, DECOMPILE, DISASSEMBLE THE PROGRAM, OR CREATE ANY DERIVATIVE WORK BASED UPON THE PROGRAM.
4. **WARRANTY.** DSD BUSINESS SYSTEMS, INC. software is licensed "as is" with no warranties of any kind, either expressed or implied, other than the following: DSD BUSINESS SYSTEMS will repair any bugs or flaws found in the software. Flaws of a critical nature which affect the basic functionality of the software will be repaired on an "emergency" basis, with a corrected distribution diskette sent via UPS Blue or equal. Flaws of a non-critical or cosmetic nature will be repaired on a timely basis, and a corrected distribution diskette sent via UPS ground or regular mail. All incidental or consequential damages that result from any defect in the software, even if DSD Business Systems, Inc. has been advised of the possibility of such damages will be assumed by you.

5. **LIMITED WARRANTY FOR DISKETTES.** To the original licensee only, DSD BUSINESS SYSTEMS, INC. warrants the magnetic diskette on which the Program is recorded to be free from defects in materials and faulty workmanship under normal use and service for a period of ninety days from the date the Program is delivered. Any implied warranties of merchantability and fitness for a particular purpose are limited in duration to the period of ninety (90) days from the date of delivery. If, during this 90 day period, a defect in the diskette should occur, the diskette may be returned DSD BUSINESS SYSTEMS, INC., 5120 Shoreham Place, Suite 280, San Diego, California, 92122, or to any authorized DSD BUSINESS SYSTEMS, INC. Dealer, and the diskette will be replaced without charge to you, provided that you have previously returned the Warranty Registration Card along with a copy of your sales receipt for the Program.
6. **NO OTHER WARRANTIES.** No dealer or distributor of DSD BUSINESS SYSTEMS, INC. products or any agent of DSD BUSINESS SYSTEMS, INC. is authorized to make any representation of warranty with respect to the Program except those expressly stated in the Customer License Agreement.
7. **LIMITATION OF LIABILITY.** Neither DSD BUSINESS SYSTEMS, INC. nor anyone else who has been involved in the creation, production or delivery of this program shall be liable for any direct, incidental or consequential damages.
8. **TERM.** This license is effective until terminated. You may terminate it at any time by returning the Program and Documentation together with all copies, modifications and merged portions in any form to DSD BUSINESS SYSTEMS, INC. The license will also be terminated by DSD BUSINESS SYSTEMS, INC. immediately and without notice if you fail to comply with any term or condition of this License Agreement.
9. **ACKNOWLEDGMENT.** Your opening this package, use of this program or signature on the warranty registration card acknowledges that you have read this customer license agreement and agree to its terms. You further agree that the license agreement is the complete and exclusive statement of the agreement between yourself and DSD BUSINESS SYSTEMS, INC. and supersedes any proposal or prior agreement, oral or written, and any other communications between yourself and DSD BUSINESS SYSTEMS, INC or dealers and distributors of DSD BUSINESS SYSTEMS, INC products relating to the subject matter of this agreement.
10. **ASSIGNMENT.** You may not sublicense this license or the Program. You may not rent this Program or the use of the Program. You may not transfer this copy of the Program unless the recipient agrees in writing (and a copy of such acceptance is sent to DSD BUSINESS SYSTEMS, INC., 5120 Shoreham Place, Suite 280, San Diego, California, 92122) to accept all of the terms of this Customer License Agreement. Any attempt by you to otherwise rent, sublicense, assign or transfer any of the rights, duties or obligation hereunder is void and may be the cause for immediate termination of the license. DSD BUSINESS SYSTEMS, INC. may assign any of its rights and obligation under this agreement to any party without notice to you.

Fax Transmittal Form

To:	<i>DSD Business Systems Customer Service</i>		Fax:	<i>858/550-4900</i>
From:	Name:		Phone:	
	Company:		Fax:	
Date:	/ /	# Pgs Including this Page:		
Subject:	Check One: <input type="checkbox"/> Product Problem <input type="checkbox"/> Suggestions			
Product:	<i>LMSN SQL to non-SQL Migration Utility</i>		Version:	<i>7.40</i>

This page may be copied