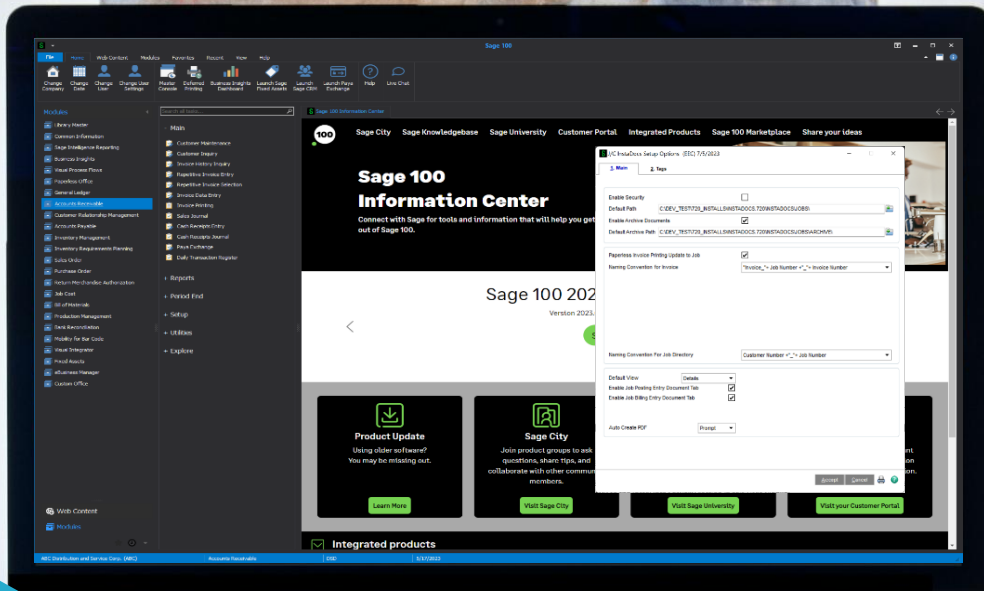


Sage



DSD BUSINESS SYSTEMS

SAGE 100 ENHANCEMENTS

JCDM

JOB COST INSTADOCS

Information in this document is subject to change without notice.
© Copyright 1993-2026, DSD Business Systems All rights reserved.

Job Cost InstaDocs

Published Date: June 18, 2026

DSD Business Systems
8787 Complex Drive
Suite 400
San Diego, CA 92123
858-550-5900 8:00am to 5:00pm PST
858-550-4900 Fax

Trademarks

ProvideX® is a registered trademark of Sage Software.

Windows is a trademark of Microsoft Corporation.

Sage 100® is a registered trademark of Sage Software.

All other product names and brand names are service marks, and/or trademarks or registered trademarks of their respective companies.

This documentation and the software described herein, is prepared and published under license. Sage Software has not tested or verified either the software or any representation in this documentation regarding the software. Sage Software does not make any warranty with respect to either this documentation or the software described herein, and specifically disclaims any warranty, express or implied, with respect hereto, including the warranties of fitness for a particular purpose and merchantability.

TABLE OF CONTENTS

Section A: Introduction	5
Job Cost InstaDocs Features	5
Section B: Getting Started.....	6
Updated Modules	6
Installation	7
DSD Enhancement Control Panel.....	7
Section C: Setup	11
Compatibility.....	11
InstaDocs Directory Permissions.....	11
InstaDocs Workstation Setup	11
InstaDocs Setup Options.....	12
InstaDocs Security	14
Common Information	15
Microsoft’s One Drive™ Integration.....	16
Section D: System Operations	17
Job Maintenance	17
InstaDocs Display Panel	18
Tagging a Document.....	18
Searching for a Document	19
Archiving a Document.....	20
Job Posting Entry	21
Job Billing Data Entry	22
Job Invoice Printing	23
Job History Inquiry.....	23
InstaDocs SuperSearch	23
InstaDocs Document Migration Utility.....	24
Utilities.....	24

Section E: Uninstall DSD Enhancements.....27

Section F: Resources and Support29

 Web Resources.....29

 Support.....29

Section A: Introduction

This manual contains a description and instructions for this DSD product. Operating instructions are included for the features added by this product to Sage 100. For instructions on using Sage 100, refer to the appropriate Sage 100 manual, or call your Sage 100 reseller. DSD Business Systems offers excellent Sage 100 support, at an hourly rate.

Job Cost InstaDocs Features

Job Cost InstaDocs allows electronic documents to be stored, viewed and accessed within Sage 100 ERP. It is the first and only document management solution to be embedded within Sage 100 ERP. This unique electronic document storage solution provides easy access of documents relating to specific records.

The Documents Panel is embedded into various Sage 100 ERP Maintenance, Inquiry, and Data Entry programs. As each record is accessed, the documents that correspond to that record are displayed. The user has the ability to drag and drop documents, select documents to edit, and tag documents with unlimited keywords. Users can then search all stored documents based on those specific keywords. **Master Search** allows users to search all documents based on File Name, Keywords, and Document Source.

J/C Invoices can be automatically stored in PDF format within the appropriate **Job** directory.

With **InstaDocs** Role Security enabled, you can define which users/roles can View, Open, Email, Delete, and Drag and Drop documents within the **InstaDocs** Documents Panel.

With **InstaDocs**, all documents are at your fingertips!

Section B: Getting Started



Important – Read this section prior to installing this enhancement.

Updated Modules

This enhancement modifies several Sage 100 modules. If you reinstall one of the Sage 100 modules listed in the following table, you must also reinstall this enhancement. **Enhancements from different Sage Tech Partners may not be designed to work together.**

Module	JCDM
Job Cost	✓
Common Information	✓
Library Master	✓

If you are upgrading Sage 100 with a Product Update, check the DSD website for compatibility before upgrading. A new version of the enhancement may be required.

If you are upgrading Sage 100 to a new version (e.g., 2021 to 2023), you must obtain the latest compatible release from the DSD website prior to installing and converting.

Ensure the compatibility of all enhancements with the version being upgraded to prior to starting the installation process. Work with your reseller to ensure that enhancements are compatible with each other and note the proper order in which they should be installed.

Installation

Back-up: Exit all Sage 100 sessions. Back-up existing Sage 100 data.

Check Levels: Sage 100 module levels must match those listed above.

Run Enhancement Setup Program: Save the executable installation program (sent to you or downloaded from our website) in a convenient location on the Sage 100 server. Launch the program from Windows Explorer or by selecting Start/Run, and then browse for the file in the location you saved it. Follow on-screen instructions.

Send your Sage Serial Number to your DSD Representative: Send your Sage Serial Number to your DSD representative in order for us to send you back the encrypted keys to unlock your system. This serial number can be found in Library Master\Setup\System Configuration, Tab 3. Registration as Serial Number.

Re-Start Sage 100: Sage 100 will be updated.

Update Security: After installation, you may not see the modules you installed on the Launcher menu. You will need to update all your security Roles to include access to the newly installed modules. Make sure your user has sufficient rights to modify Role Maintenance and add access to the new DSD enhancements to the appropriate Roles.



If this is your first DSD enhancement, make sure to add the DSD Enhancement Control Panel in the Library Master module to an appropriate Role.

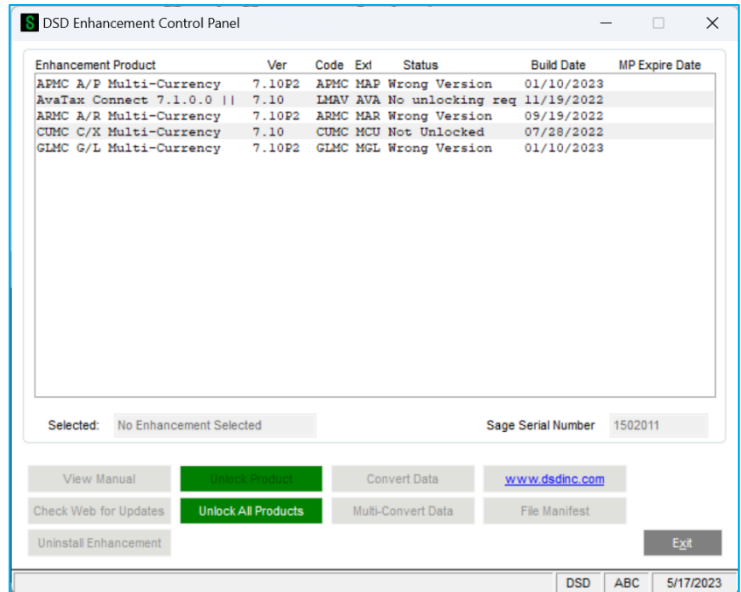
Run the DSD Enhancement Control Panel: Run the DSD Enhancement Control Panel from the Library Master module under the Utilities menu.

DSD Enhancement Control Panel

Starting with version 3.61, all DSD Enhancement products include DSD's Enhancement Control Panel. The DSD Enhancement Control Panel is accessed from the Library Master Utilities menu.

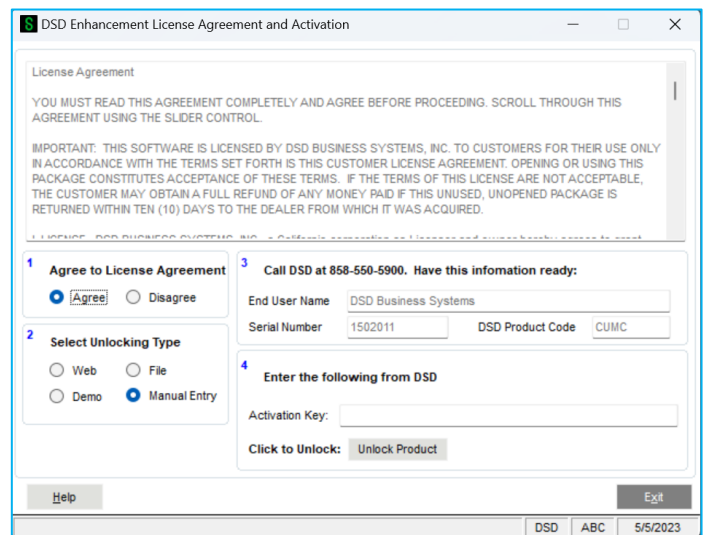
The DSD Enhancement Control Panel is a simple to use yet powerful system to help maintain DSD Enhancements installed on a Sage 100 system. To use it, select an Enhancement product from the list on the window and then click the button, on the right side of the window, which corresponds with the desired task.

View Manual: This button will display the product manual for the selected Enhancement using Adobe Acrobat. For this to be possible, the PDF file for the corresponding manual must be in the “MAS90/PDF” folder in the Sage 100 system. If the file is not present, and the system has web access, the correct PDF file will be automatically downloaded from the DSD website, put into the “MAS90/PDF” folder and then displayed.



Check the Web for Updates: This button will check the DSD website to see what the current build is the selected Enhancement and alert the user if a later version is available. *This requires an internet connection on the Sage 100 system.*

Unlock Product: This will cause the DSD Enhancement License Agreement and Activation window to appear. DSD Enhancements must be unlocked to run. When any part of the Enhancement is run for the first time, the DSD Enhancement License Agreement and Activation window will appear. Follow the steps shown on that window. You can click the Help button for more detailed instructions. *This button is disabled if the selected Enhancement is already unlocked or if unlocking is not required.*




Agree to the License Agreement: On the DSD Enhancement License Agreement and Activation window, click on the Agree button to accept the DSD License Agreement. After accepting the License Agreement, you can then select the type of unlocking that you’d prefer. The choices are File, Web, Demo and Manual Entry.

File Unlock: After receiving your encrypted serial number key file from DSD, and placing that file in the MAS90/SOA directory, selecting this option will unlock all products keys contained in the file. This means you can unlock all enhancements at once using this option.

Web Unlock: If the system that is running the DSD Enhancement **has web access** and you **have sent DSD your Sage Serial number**, you can unlock the Enhancement without assistance using

Web Unlock. When this option is selected, the licensing program will attempt to download encrypted serial number key file from DSD **and then proceed to unlock all enhancements contained in the file.**

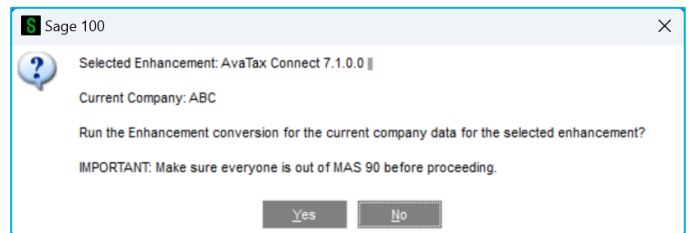
Demo Unlock: If a Demo mode is available for the Enhancement you're running, you will be able to Demo unlock the product without assistance from DSD for demo purposes.

 Creating a Demo Unlock is a good way to temporarily unlock DSD Enhancements off-hours, if you do not have web or email access. Later, you can unlock the product fully, during business hours.

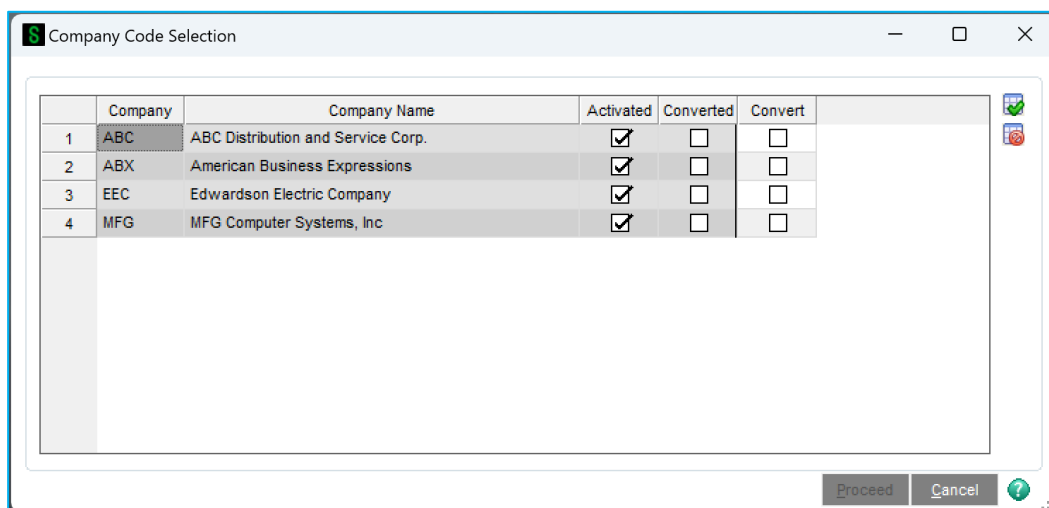
Manual Entry Unlock: If you want to unlock a single enhancement using a single encrypted key, you can select this option and enter the 64 character key you receive from DSD by copy and paste.

Unlock All Products: This will cause the DSD Enhancement All License Agreement and Activation window to appear. This window is similar to the one described on the previous page but has only web and file as options to unlock. *This button is never disabled.*

Convert Data: After verification, the selected Enhancement's data conversion program will run. Data conversion is non-destructive and may be triggered any number of times. Sometimes this is required to fix data records imported or updated from a non-enhancement installation.



Multi-Convert Data: Multiple Companies can be converted at the same time for a given Enhancement.



Help: The Help button, located at the bottom right of the window, opens an HTML help file.

Get Adobe Acrobat: Opens the Adobe Acrobat website to the page where Acrobat can be downloaded and installed.

Uninstall Enhancement: If this option is available, then selecting this button will start the un-install process, removing the enhancement from the system. For more information see [Uninstall DSD Enhancements](#).

Section C: Setup

Compatibility

InstaDocs is not compatible with Windows O/S versions 2003 (server) or XP. Windows Vista or higher is required.

InstaDocs Directory Permissions

The directories that store the InstaDocs files must have full permissions for all Users, including Local Admin user.

InstaDocs Workstation Setup

Sage 100 Advanced and Premium Versions Only

The DLL Components required for each workstation will be copied automatically from the server on the initial load of an InstaDocs screen, and the necessary Window's registration performed. Should this process fail, for Window's security reasons or otherwise, a DLL registration error will result, requiring this process to be performed manually. To perform this process manually, do the following:

For Sage 100 32-bit system installations (versions 2025 and below):

1. Copy the DSDDocuments.dll and REGDM.BAT files from the ..\MAS90\Home directory on the server, to the directory of the same name on the workstation.
2. Open a Command Prompt as Administrator.
3. Change the current directory to the workstation's MAS90\Home location.
4. Type the following and press Enter: REGDM.BAT

For Sage 100 64-bit system installations:

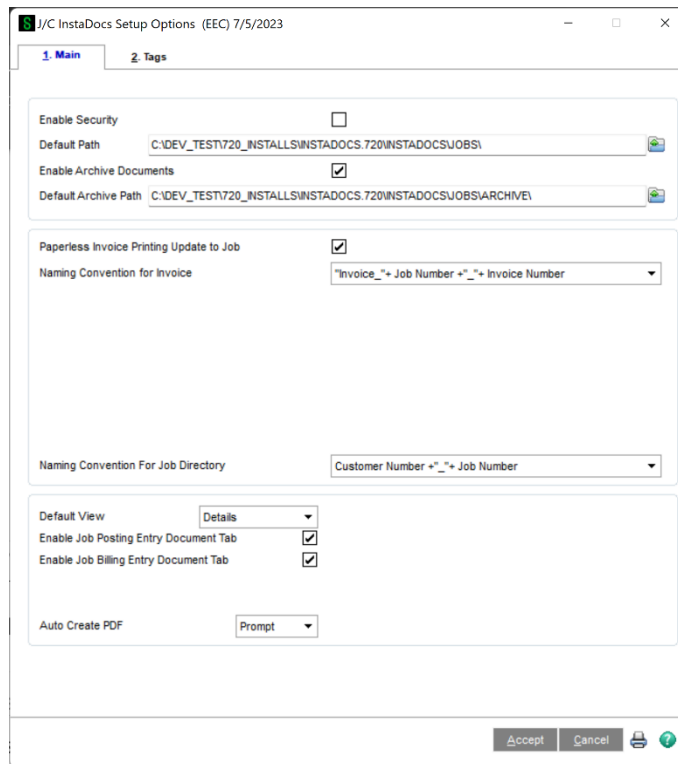
1. Copy the DSDDocuments64.dll and REGDM64.BAT files from the ..\MAS90\Home directory on the server, to the directory of the same name on the workstation.
2. Open a Command Prompt as Administrator.
3. Change the current directory to the workstation's MAS90\Home location.
4. Type the following and press Enter: REGDM64.BAT

NOTE that versions 2026 and above are always 64-bit

InstaDocs Setup Options

InstaDocs Setup Options has been added as a menu item on the Job Cost Setup menu.

On the Main Tab, the following fields are available:



Enable Security: Selecting this checkbox turns on the Module Security Options in Role Maintenance. Please refer to the **InstaDocs Security** section in this User Manual.

Default Path: Enter the starting path to the Job documents. As documents are Drag and Dropped or pasted into the Job Maintenance **InstaDocs** panel, the Job’s document directory will be automatically created using this Default Path, plus the **Naming Convention for Job Directory** (described below). The Default Path can be a local drive, network drive or Microsoft’s One Drive™.

Enable Archive Documents: Selecting this checkbox turns on the archive features of InstaDocs.

Default Archive Path: Enter the starting path to the Job archive documents. Documents can be added to the archive path via the “archive documents” button in Job Maintenance or Drag and Drop when the archive directory is selected.

Paperless Invoice Printing Update to Job: Selecting this checkbox turns on the Paperless Invoice Printing feature for Job Billings.

Naming Convention for Invoice: With the **Paperless Invoice Printing Update to Job** feature turned on, the naming convention of the invoice document can be defined, and is used when automatically printing to PDF and saving into the Job’s document directory. There are four options to choose from:

- Invoice Number
- Job Number + “_” + Invoice Number
- “Invoice_” + Invoice Number
- “Invoice_” + Job Number + “_” + Invoice Number

Naming Convention for Job Directory: Enter the naming convention to use when auto-creating the Job’s Document Directory. There are three options to choose from:

- Job Number
- Job Description
- Job Number + “_” + Job Description
- Customer Number + “_” + Job Number (if integrated with Accounts Receivable)
- Customer Name + “_” + Job Number (if integrated with Accounts Receivable)

As documents are Drag and Dropped or pasted into the Job Maintenance **InstaDocs** panel, the Job’s document directory will be automatically created using the **Default Path**, plus the **Naming Convention for Job Directory**.

Default View: Select the default “View” for the **InstaDocs** Document Directory display in the various Maintenance, Data Entry, and Inquiry programs. The following options are available:

- Details – similar to Microsoft Explorer Details View
- Small Icon
- Medium Icon
- Large Icon
- Extra Large – great for .jpg or .bmp
- Tile

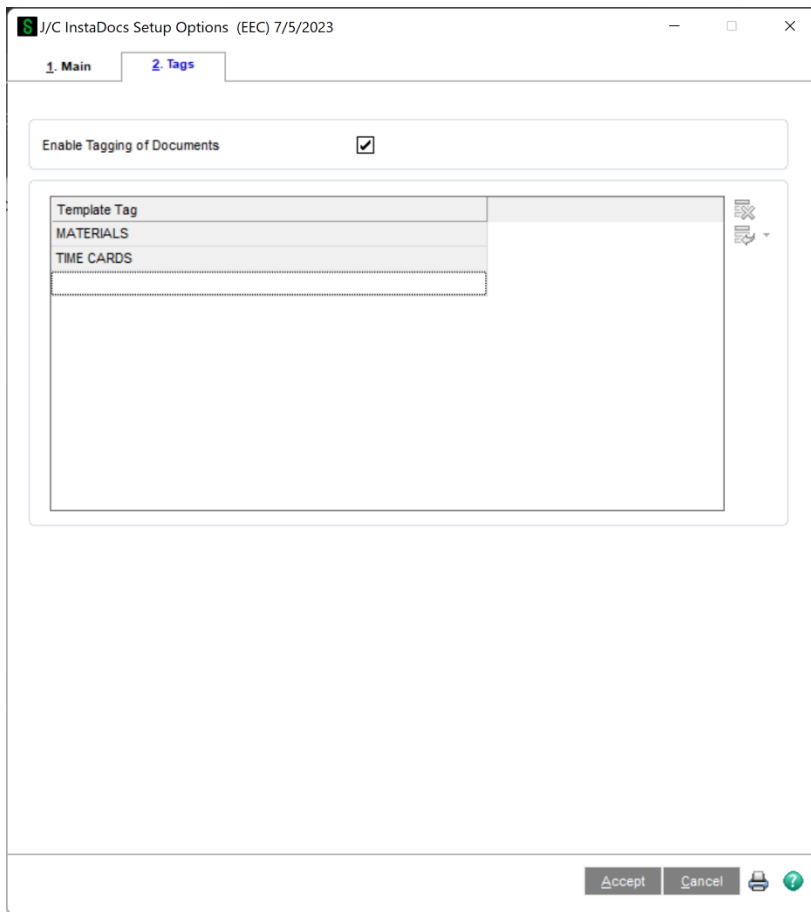
These “views” are similar to the directory view that can be seen in Microsoft Explorer. The option of changing from the default display is available in the Maintenance, Data Entry, and Inquiry programs. It is recommended that you try the different views in Job Maintenance, and then set your preferred view in *InstaDocs* Setup Options.


Enable Job Posting Entry Document Tab: Select this checkbox to enable the **InstaDocs** Panel in J/C Job Posting Entry.

Enable Job Billing Entry Document Tab: Select this checkbox to enable the **InstaDocs** Panel in J/C Job Billing Entry.

Use Reserved Word Tag: Check this box to use a reserved word. When enabled this tag needs to be on documents that you want emailed to customers with the feature “Attach Tagged Documents to Email Deliveries”

On the Tags Tab, the ability to create “Template Tags” is available, which can be used when tagging documents. Template Tags are Terms or phrases that are commonly used for documents and can relate to different stages in workflow.

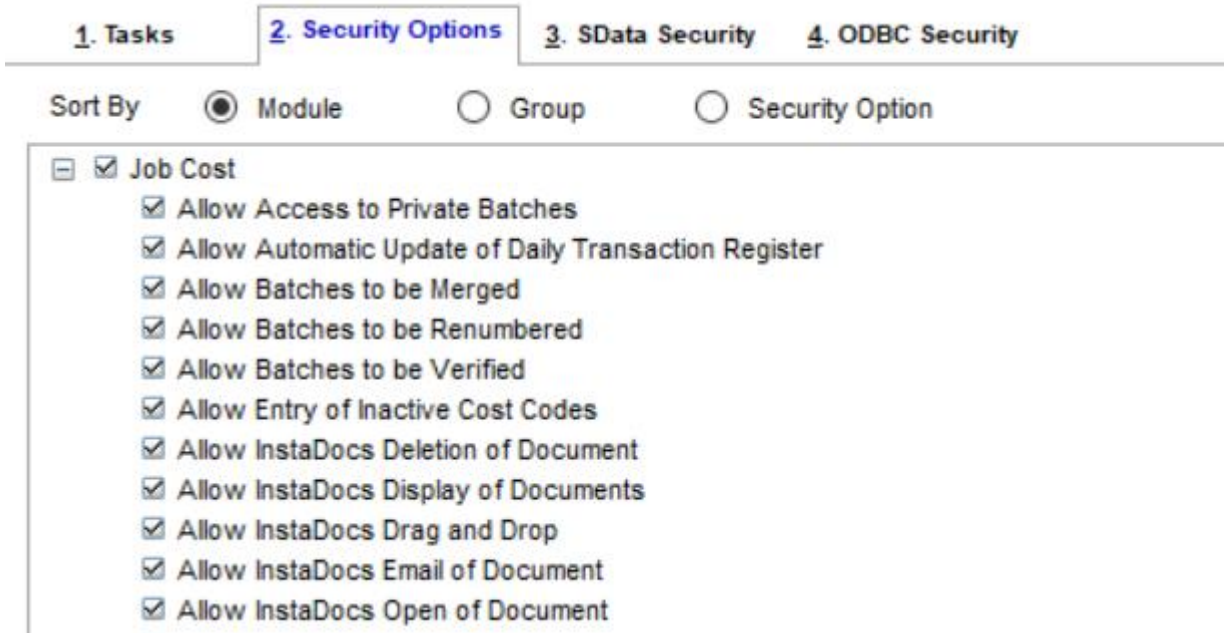


Enable Tagging of Documents: Select this checkbox to allow for tagging of documents. Tagging can be done by selecting one or more documents in the **InstaDocs** Tab in various Maintenance, Data Entry, and Inquiry programs, and then selecting the  button on the right of the **InstaDocs** Tab.

If the **Enable Security?** checkbox is checked on the Main Tab, then the Enable/Disable Tagging of Documents can be set in **Role Maintenance**.

InstaDocs Security

InstaDocs Security can be maintained in Library Master / Main / **Role Maintenance**. Select the 2. Security Options panel to access the security options.



Allow InstaDocs Deletion of a Document: Allow/Disallow the deletion of a document from the InstaDocs Document Tab.

Allow InstaDocs Display of a Document: Enable/Disable the display of the InstaDocs Document Tab in the Maintenance, Data Entry, and Inquiry programs.

Allow InstaDocs Drag and Drop Allow/Disallow the drag and drop of a document into the InstaDocs Document Tab.

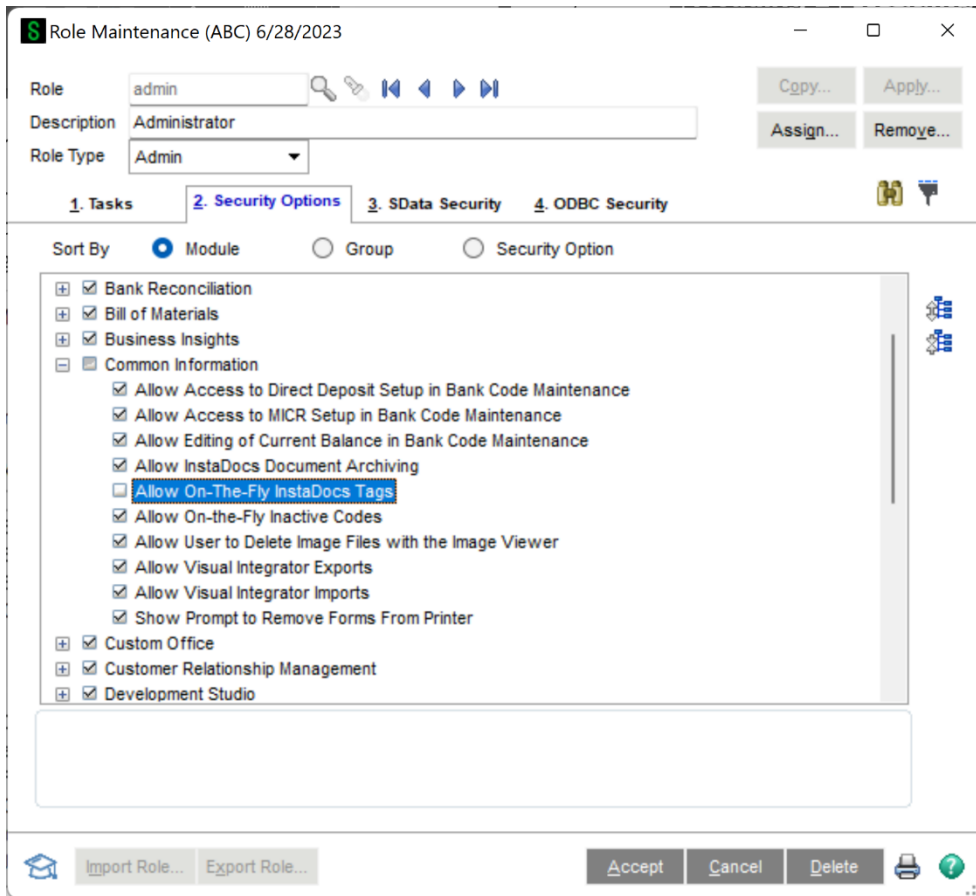
Allow InstaDocs Email of a Document: Allow/Disallow the email of a document from the InstaDocs Document Tab.

Allow InstaDocs Open of a Document: Allow/Disallow the open of a document from the InstaDocs Document Tab.

Common Information

A new Common Information Security Event has been added:

Allow On-The-Fly InstaDocs Tags: Select this checkbox to allow the user to enter free-form Tags to documents. Clear this checkbox to disallow free-form Tags, and only allow Template Tags to be used when tagging documents.



Microsoft's One Drive™ Integration

Microsoft's One Drive™ can be obtained on the One Drive website: <https://onedrive.live.com>.

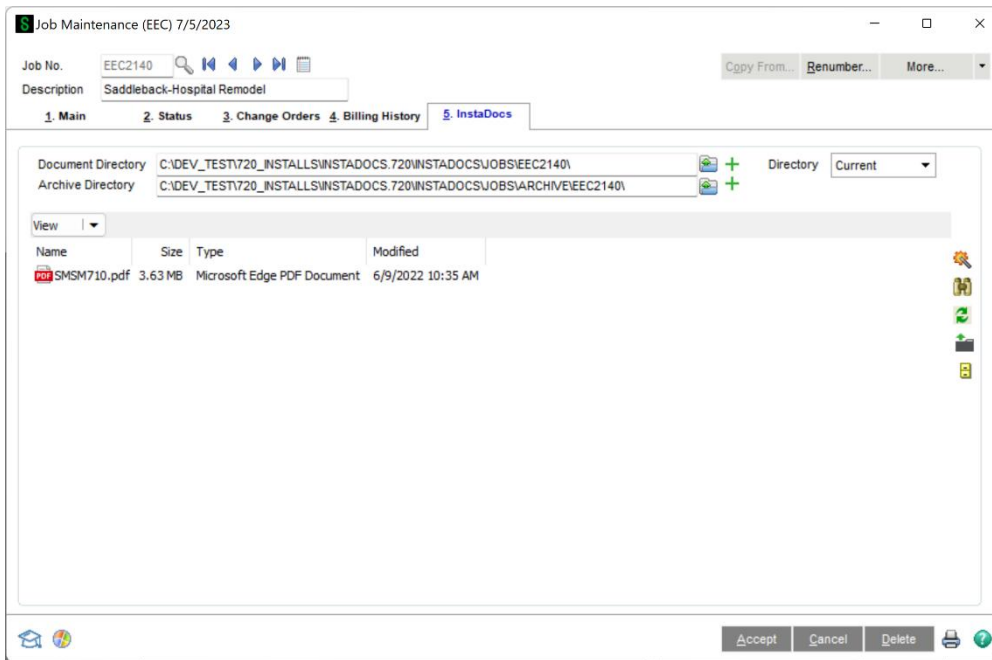
After signup and purchase, be sure to download the install to enable One Drive™ on your network or workstation. After installation, you will have the ability to set the One Drive™ as your Default Path in InstaDocs Options.

The One Drive™ mobile device application is also available for download, which enables you to preview documents remotely.

Section D: System Operations

Job Maintenance

The *InstaDocs* Tab has been added to the Job Maintenance Panel.



Document Directory: This directory is defaulted based on the **Default Path and Naming Convention for Job Directory** setup in *InstaDocs Setup Options*, but can be changed by the user. A Directory Lookup button is available to browse to other directories.

Although the directory is defaulted, the actual directory is not created until the create directory button is pressed or a document is drag and dropped, pasted, or already exists in that directory. If the directory does not exist, the “The directory is invalid” message is displayed below the Document Directory. The create directory button is also located in Data Entry.

Archive Directory: This directory is defaulted based on the **Archive Path and Naming Convention for Job Directory** setup in *InstaDocs Setup Options*, but can be changed by the user. A Directory Lookup button is available to browse to other directories.

Although the directory is defaulted, the actual directory is not created until a document is drag and dropped, pasted, create directory button is pressed, or already exists in that directory. If the directory does not exist, the “The directory is invalid” message is displayed below the Document Directory. The create directory button is also located in Data Entry.

Directory: The directory dropdown allows you to toggle between the current document directory and the archive directory.

View Type: Select the View Type for the directory display. The default View Type can be set in *InstaDocs Setup Options* and can be changed on any *InstaDocs Display Panel*. The options available are: View, Icon, Detail, and Tile.

Refresh Button: Select this button to Refresh the Display of documents in the *InstaDocs Display Panel*.

InstaDocs Display Panel

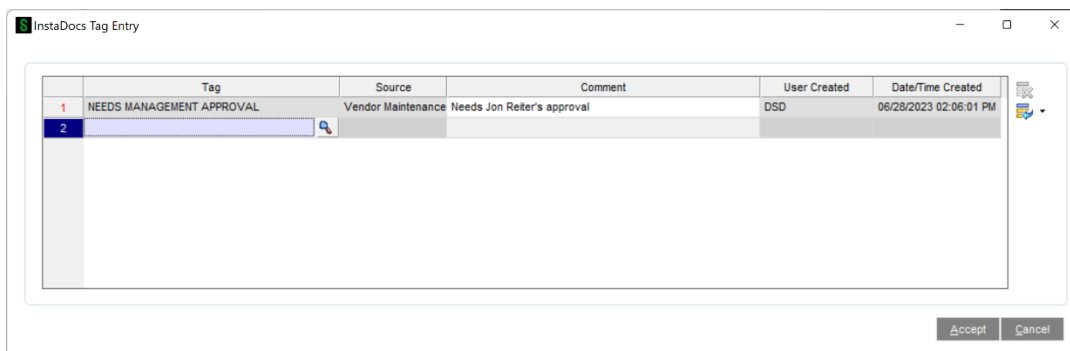
The documents for a Job’s directory are displayed in the new *InstaDocs Display Panel*, and the user has various actions available for the documents:

- Drag and Drop: Drag a file, or multiple files, from anywhere on your computer, and drop it into the Display Panel.
- Copy and Paste: Copy a file, or multiple files, from anywhere on your computer, and right-click-Paste into the Display Panel. Also available is the ability to Right-click-Copy a file in the Display Panel, and then paste the file elsewhere.
- Open: Double-click a file and it will open the document.
- Delete: Right-click-Delete to delete the document from the directory.
- Email: Right-click-Send to Mail Recipient to email a single document from the Display Panel.
- Print: Right-click-Print to print a single document from the Display Panel.

With the **Detailed View**, the documents can be sorted by selecting the display header (Name, Size, Type, and Modified Date). The columns may also be rearranged.

Tagging a Document

On the right of the *InstaDocs Display Panel* is the 🏷️ Tag button. A file, or multiple files, can be selected, and then the Tag Button can be pressed to display the *InstaDocs Tag Entry* panel:




- Single file tagging: When a single file is selected to tag, the **InstaDocs Tag Entry** panel will display all existing tags and will allow addition of new ones.
- Multiple file tagging: When multiple files are selected to tag, the **InstaDocs Tag Entry** panel will NOT display existing tags and will allow addition of new ones to be applied to all files selected.

Unlimited tags can be added, and existing tags can be deleted. Template Tags that are setup in **InstaDocs Options** can be accessed by selecting the Lookup Button, or any word or phrase may be entered as the tag. Tagging of a file allows for searching of files by tags that have been added to documents.

All tags will have system-generated **User Created** and **Date/Time Created** fields added. The Date/Time is based on when the tag was created.

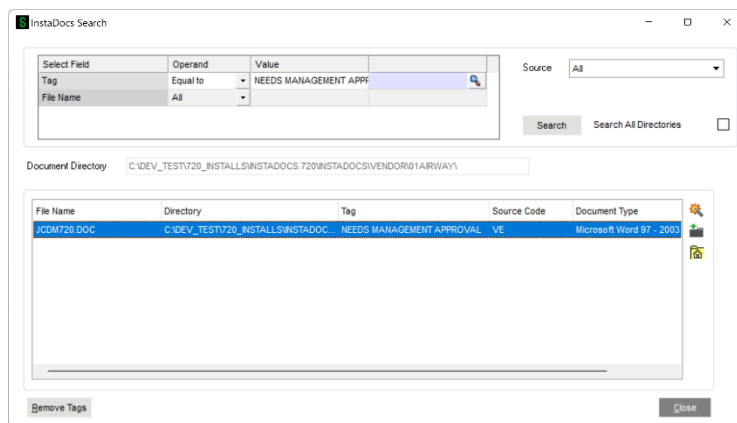
Comment: A comment may be entered for each tag. Once the Comment is added, and saved, it cannot be changed.

Searching for a Document

On the right of the **InstaDocs Display Panel** is the  Search button. Selecting this button will display the **InstaDocs Search Panel**.

Selection Grid: Select the Search Values for Tag and File Name.


Source: Narrow a search by selecting the Source of where the document was added into the **InstaDocs Display Panel**. This includes Job Maintenance, Job Posting Entry, and Job Billing Data Entry.



Search All Directories: Select this Checkbox to search in **all InstaDocs** directories for the tagged documents. UnCheck this Checkbox to only search in the specific Customer’s directory.

Search Button: After completing the search criteria, select the **Search** button to do the search.


Search Display Panel: This panel will display the documents found in the search. The directory path is also displayed. Double-click on the row in the **Search Display Panel** to **open** the document.

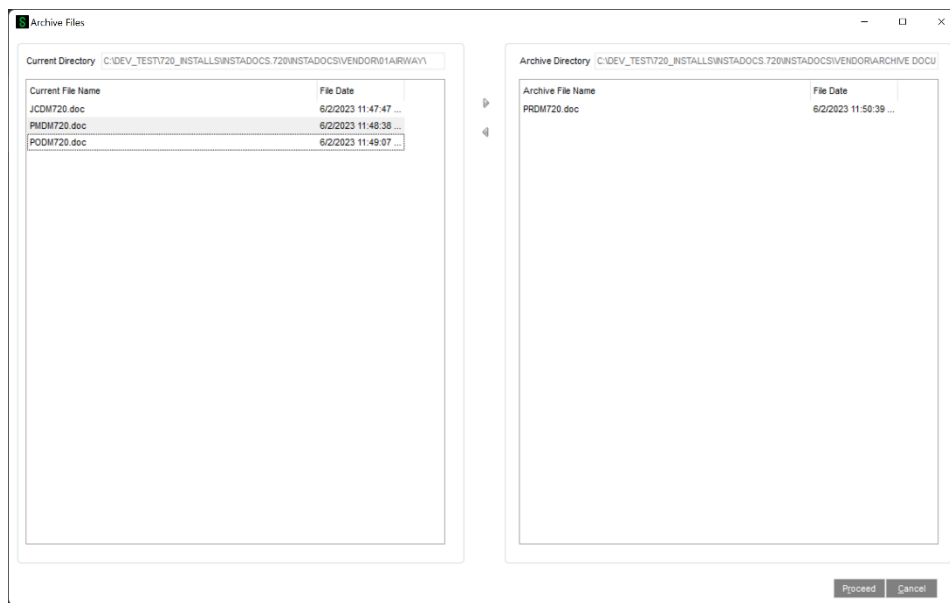
Tag Button: Highlight a row, and then select the  Tag button to review the tags for a specific document. The deletion of tags and addition of new ones is available.

Open Button: Highlight a row, and then select this button to open the document. Open a document my double-clicking he document in the **Search Display Panel**.

Directory Button: Highlight a row, and then select this button to open the directory of the file in a new panel.

Archiving a Document

On the right of the **InstaDocs Display Panel** is the  Archive button. Selecting this button will display the **InstaDocs Archive Files Panel**.



Current Directory: The current directory section displays all documents in the current directory.

Archive Directory: The archive directory section displays all documents in the archive directory.

Arrows: Selection of a document or multiple documents can then be moved by using the arrows to move the document between directories. The Proceed button then confirms the document move. The cancel button will cancel any moves between directories. Document tags will also be updated when documents are moved between directories.

Job Posting Entry

A new **More** Button has been added to the top-right of the J/C Job Posting Entry Panel. After selecting a Job Posting line with a valid Job Number, select this **More** button to access the **InstaDocs** Display Tab.

Job Posting Entry (EEC) 7/5/2023

Posting Type: Direct Cost

Entry Number: 0002024

Credit Account: 101-00-00 Cash in Bank - Checking

	Cost Code	Cost Type	G/L Account	Unit Cost	Quantity	Amount
1	100-010-000	Equipment	142-00-00	1.00	10.00	10.00
2				.00	.00	0.00

Job Description: Saddleback-Hospital Remodel

Cost Code Desc: Underground Work - Digging

Account Desc: Work in Process - Equipment

Vendor Number:

Total: .00

Buttons: Accept, Cancel, Delete

InstaDocs

Document Directory: C:\DEV_TEST\720_INSTALLS\INSTADocs.720\INSTADocs\JOBS\EEC2140\

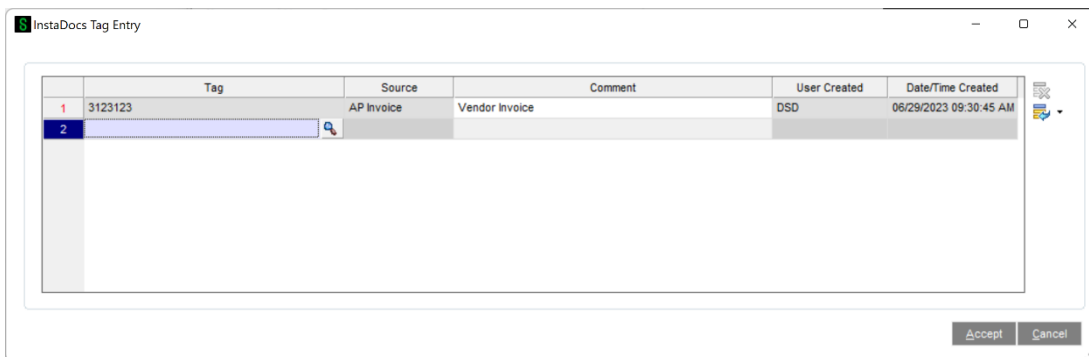
Name	Size	Type	Modified
S567520.pdf	403 KB	Microsoft Edge PDF Document	8/31/2015 6:03 AM

OK

Document Directory: This directory is based on the setting in Job Maintenance. All documents that are Drag and Dropped or Pasted into this panel are saved into this Job directory.

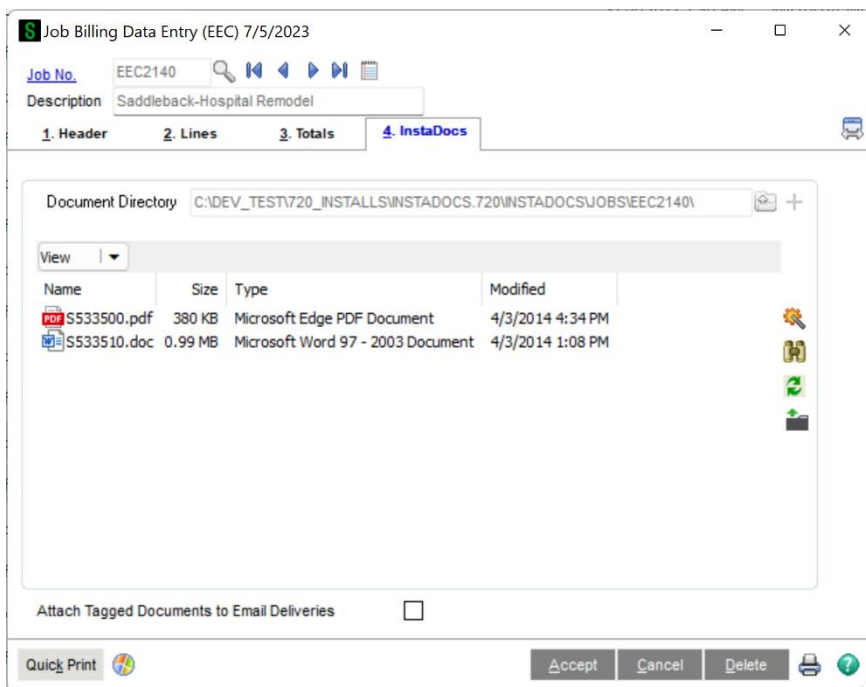
The behavior of the panel is similar to those in Job Maintenance, with these additions:

- Only those documents Drag and Dropped or Pasted into this panel are displayed on this panel.
- Files that are Drag and Dropped or Pasted into this panel are **Auto-Tagged** with the J/C Job Posting Number.



Job Billing Data Entry

The *InstaDocs* Tab has been added to the J/C Job Billing Data Entry Panel.



Document Directory: This directory is based on the setting in Job Maintenance. All documents that are Drag and Dropped or Pasted into this panel are saved into this Job directory.

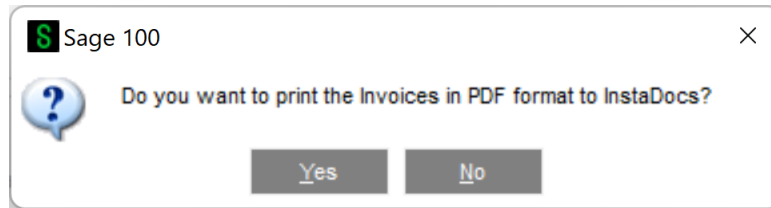
Attach Tagged Documents to Email Deliveries: Select this option to have Tagged Documents attached to email deliveries when electronically sending invoices through Paperless

The behavior of the panel is similar to those in Job Maintenance, with these additions:

- Only those documents Drag and Dropped or Pasted into this panel are displayed on this panel.
- Files that are Drag and Dropped or Pasted into this panel are **Auto-Tagged** with the J/C Billing Entry Number.

Job Invoice Printing

After Invoices are previewed or printed, the user will be prompted to print the invoices in PDF format and saved into the Job’s directory.



The PDF File Name will be based on the **Naming Convention for Invoice** setting in *InstaDocs Setup Options*.

As the PDF is saved, the document is Auto-Tagged with the Invoice Number.

Note: This feature is only available if the **Paperless Invoice Printing Update to Job** checkbox is selected in *InstaDocs Setup Options*.

Job History Inquiry

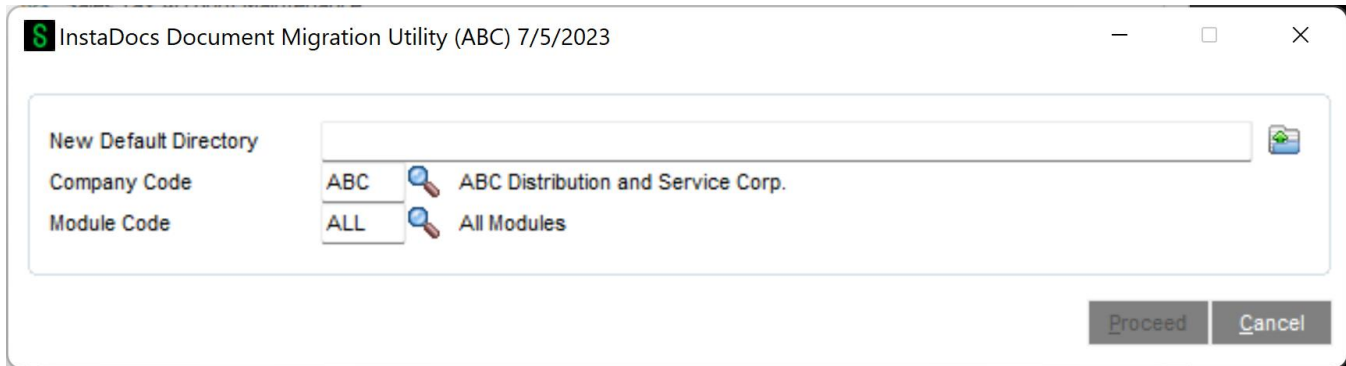
The *InstaDocs* Tab has been added to the Job History Inquiry Panel, and has the same capabilities as the panel in Job Maintenance. The screen has the same drop down as Job Maintenance to change the directory from Current to Archive.

InstaDocs SuperSearch

This Search Program has been added to the Job Cost Utilities menu, and has the same functionality as the Search Panel outlined in Job Maintenance.

InstaDocs Document Migration Utility

The InstaDocs Document Migration Utility has been added to the Common Information / Utilities menu.



New Default Directory: Select the new directory to move all documents to.

Company Code: Select the Company Code for the migration.

Module Code: Select the InstaDocs module code to migrate, or select ALL to do all modules.

When the **Proceed** button is selected, the utility will scan all InstaDocs directories and do the following:

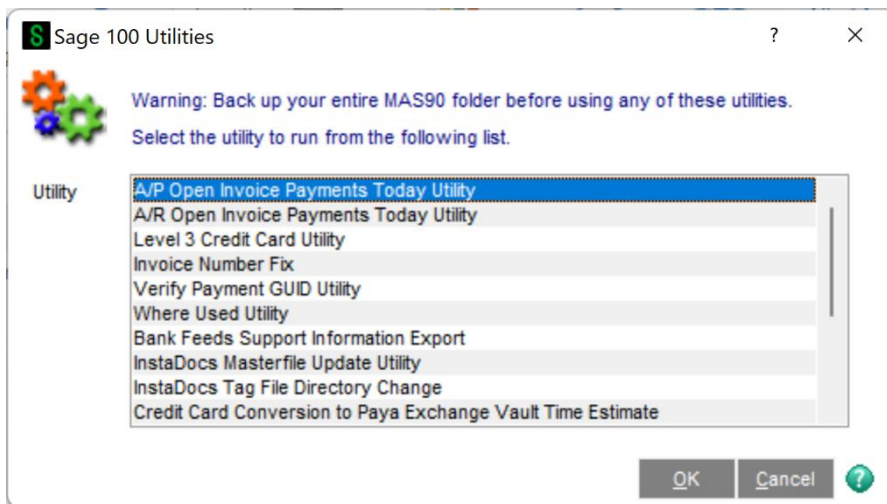
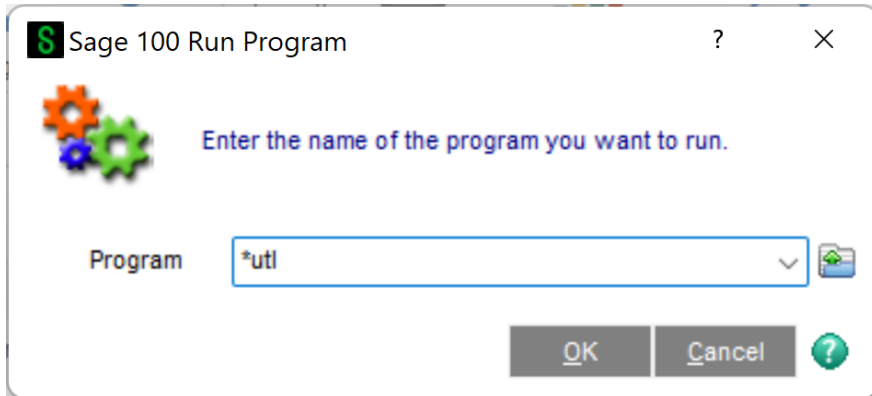
When the **Proceed** button is selected, the utility will scan all InstaDocs directories and do the following:

1. A Find/Replace process will be performed for the specified InstaDocs module, substituting the original Default Directory with the New Default Directory
2. All files in the original document directories will be moved to the new location as prefixed by the new Default directory.
3. A new directory will be created for those that don't already exist.
4. The InstaDocs Directory for each Masterfile record for the specified module will be updated with the new Default Directory
5. The InstaDocs Tag file will be updated for all tags that contain the original path.

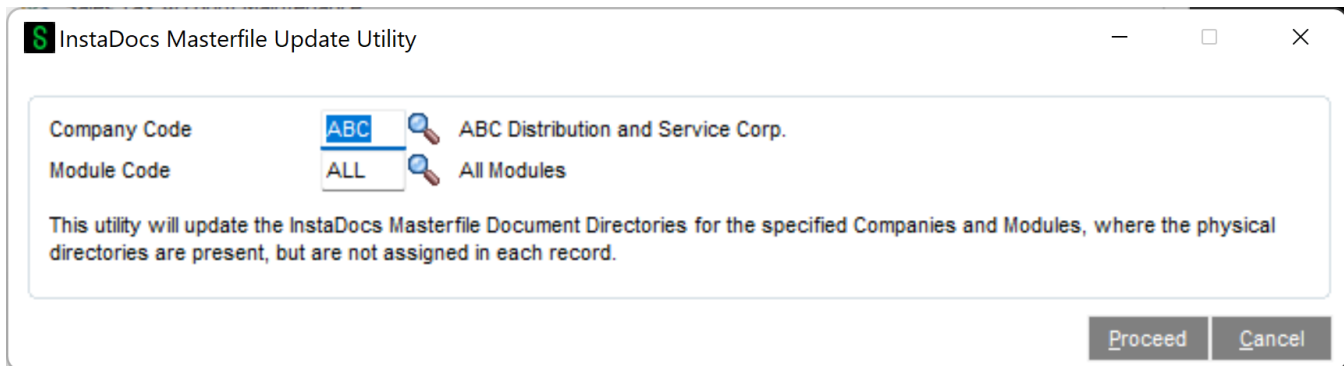
Utilities

Sage file > Run > *UTL

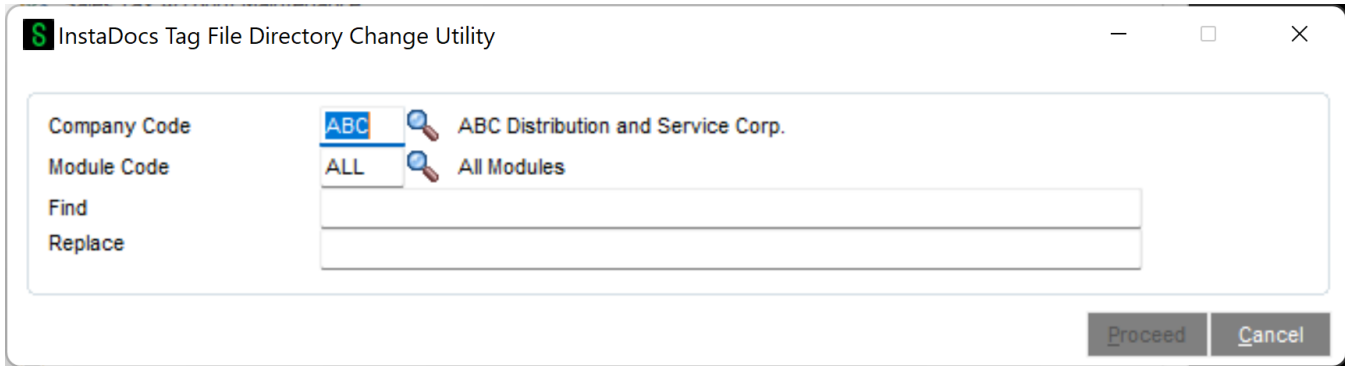
Here are the Panels when running:



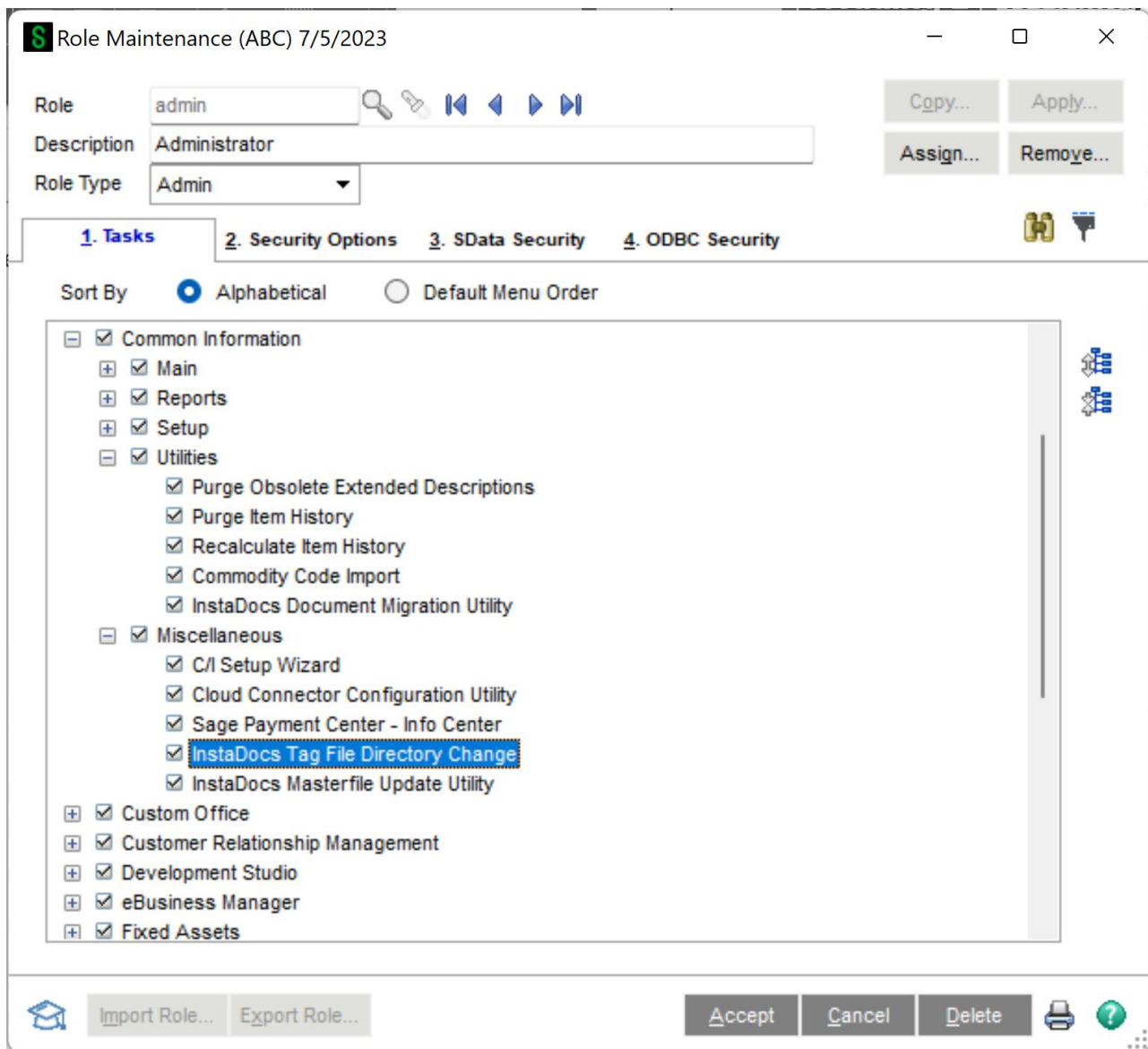
InstaDocs Masterfile Update Utility: This utility will update the Masterfile directories.



InstaDocs Tag File Directory Change Utility: This utility will Find and Replace the directory for the tag file.

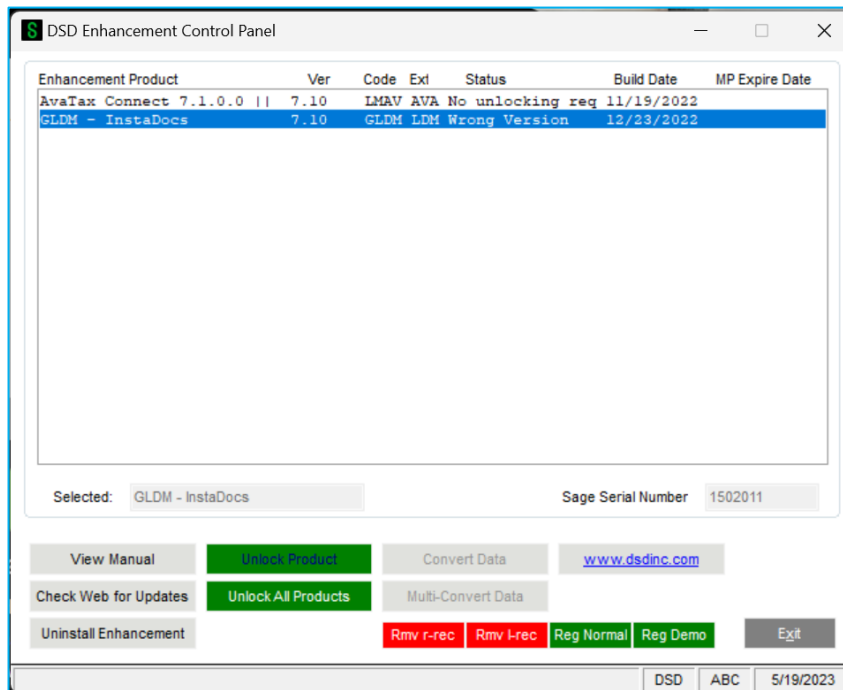


Two new security tasks have been added. "InstaDocs Tag File Directory Change" and "InstaDocs Masterfile Update Utility"



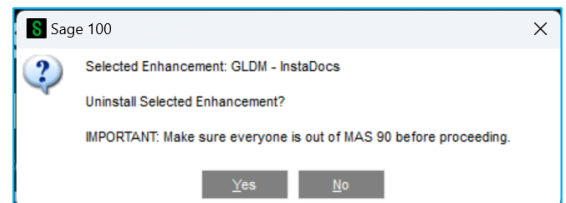
Section E: Uninstall DSD Enhancements

A DSD Enhancements Uninstall Utility has been provided for the purposes of removing DSD Enhancements from your Sage 100 System. This utility may be accessed from the **DSD Enhancement Control Panel** menu option on the **Library Master / Utilities** menu.



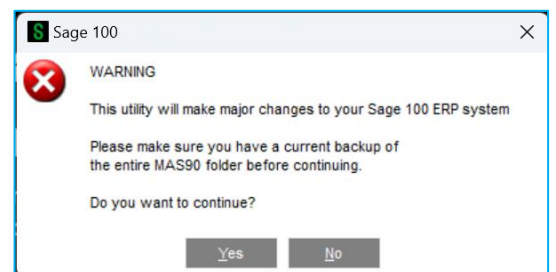
When accessing the **DSD Enhancement Control**, select the enhancement that you wish to Uninstall, and then select the **Uninstall Enhancement** button. The following message box will appear:

- Select **No** to exit the Uninstall Process.
- Select **Yes** to continue with the Uninstall Process.



The following message box will appear, to remind you that a complete backup of your entire Sage 100 system should be completed prior to uninstalling a DSD product.

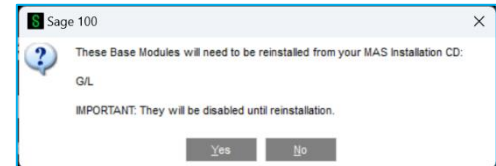
- Select **No** to exit the Uninstall Process.
- Select **Yes** to continue with the Uninstall Process.



After the Uninstall of the DSD Enhancement, you MUST reinstall certain standard Sage 100 modules, followed by reinstallation of Product Updates and Hot Fixes, if applicable.

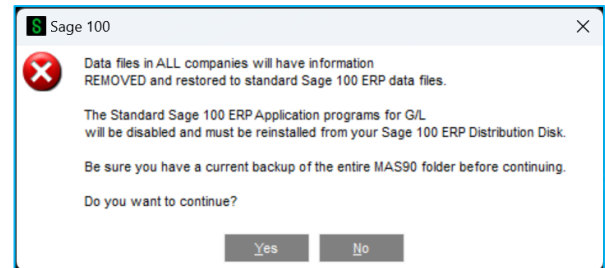
A message box will appear, and will display which of those specific Sage 100 modules you must reinstall afterwards.

- Select **No** to exit the Uninstall Process.
- Select **Yes** to continue with the Uninstall Process.

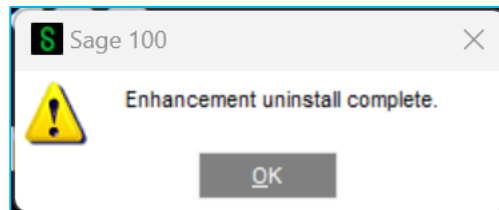


The following message box will appear, displaying the final warning message.

- Select **No** to exit the Uninstall Process.
- Select **Yes** to continue with the Uninstall Process. At this point, the DSD Enhancement will be removed from the Sage 100 system.



After completion of the Uninstall, the following message box will appear. Select OK to continue.



Now that the Uninstall process is completed, you must:

- Reinstall the applicable standard Sage 100 modules
- Reinstall the latest Sage 100 Service Pack/Updates, if applicable.
- Reinstall any other DSD Enhancements or Developer products that are affected from the reinstallation of the standard Sage 100 module(s).

Section F: Resources and Support

Web Resources

DSD web site: <http://www.dsdinc.com>

The Enhancement page contains:

- Current Release Schedule
- Purchasing Information
- Installation Instructions
- Product Support
- Enhancement Links

Job Cost InstaDocs :

<http://www.dsdinc.com/enhancement/JCDM-ap-instadocs/>

The product web page contains:

- Product Description
- Web Links
- Current Product Version Table
- Product Installation File Download
- Product Manual in .pdf Format

Support

DSD provides product support through Sage 100 resellers. Support is provided for the current version. Older versions are supported at an hourly rate.

- Telephone: 858-550-5900
- Fax: 858-550-4900
- Email: enhancements@dsdinc.com

For a hard error, where the program displays an error dialog, report:

- Enhancement Name
- Error number
- Program name
- Line number

- Program version
- Exact sequence that caused the error, including menus and menu selections
- Other pertinent information

If leaving a message, faxing or email, please include:

- Your name and company
- Your phone number (and fax if applicable) and extension.

It is possible to be unable to duplicate a problem, because of data corruption or because we have not exactly duplicated a particular operating environment. In such circumstances, we can only continue to try to fix the problem if we can either access the system remotely or by some other to duplicate the system.




Since 1984, DSD Business Systems has been providing clients with professional business consulting services and business software solutions across the globe. Specialties include Sage Intacct, Acumatica Cloud ERP, Sage 100, Sage 300, Sage 500, Sage CRM, Sage HRMS and more.

DSD Business Systems has been a Sage Tech Partner, commonly referred to as a “Master Developer”, for over 30 years. DSD currently has over 500 Enhancements to Sage 100 and has created thousands of custom solutions for end-users around the world. We have had the privilege of working with hundreds of Sage consultants, resellers, and end-users to produce powerful custom solutions that enhance the functionality of Sage 100.

Contact DSD Enhancements

 enhancements@dsdinc.com

 [Enhancements Marketplace](#)

 **800-627-9032**