

Sage

The screenshot displays the Sage 100 Information Center interface. A central window titled 'Account Group Maintenance (ABC) 9/23/2023' is open, showing a table of account groups. Below the table are four action buttons: 'Product Updates', 'Sage City', 'Learning Resources', and 'Customer Portal'. The background shows a navigation menu on the left and a top navigation bar with links like 'Sage City', 'Sage Knowledgebase', and 'Sage University'.

Account Group	Description	Category	Account Type	Cash Flow Type	FASB 52 Translation
000	CURRENT ASSETS	Assets	Cash	None	Current
2	PROPERTY, PLANT AND EQ	Assets	Cash	None	Current
3	OTHER ASSETS	Assets	Cash	None	Current
4	CURRENT LIABILITIES	Liabilities	Current Liability	None	Current
5	LONG TERM DEBT	Liabilities	Current Liability	None	Current
6	EQUITY	Equity	Stockholder Equity	None	Historical
7	REVENUES	Revenue	Net Sales	None	Historical
8	COST OF SALES	Cost of Sales	Cost Of Sales	None	Historical
9	OPERATING EXPENSES - CE	Expenses	Operating Expense	None	Historical
10	OPERATING EXPENSES	Expenses	Operating Expense	None	Historical
11	GENERAL & ADMINISTRATIVE	Expenses	Operating Expense	None	Historical
12	OTHER INCOME & EXPENSE	Other Income & Exp.	Other Inc. & Exp.	None	Historical
13	PROVISION FOR INCOME TAX	Income Tax	Income Tax	None	Historical
14					

DSD BUSINESS SYSTEMS

SAGE 100 ENHANCEMENTS

GLMC

GENERAL LEDGER MULTI-CURRENCY

Information in this document is subject to change without notice.
© Copyright 1993-2026, DSD Business Systems All rights reserved.

General Ledger Multi-Currency

Published Date: April 23, 2026

DSD Business Systems
8787 Complex Drive
Suite 400
San Diego, CA 92123
858-550-5900 8:00am to 5:00pm PST
858-550-4900 Fax

Trademarks

ProvideX® is a registered trademark of Sage Software.

Windows is a trademark of Microsoft Corporation.

Sage 100® is a registered trademark of Sage Software.

All other product names and brand names are service marks, and/or trademarks or registered trademarks of their respective companies.

This documentation and the software described herein, is prepared and published under license. Sage Software has not tested or verified either the software or any representation in this documentation regarding the software. Sage Software does not make any warranty with respect to either this documentation or the software described herein, and specifically disclaims any warranty, express or implied, with respect hereto, including the warranties of fitness for a particular purpose and merchantability.

TABLE OF CONTENTS

Section A: Introduction	4
General Ledger Multi-Currency Features	4
Reports.....	5
Section B: Getting Started.....	6
Updated Modules	6
Installation	7
DSD Enhancement Control Panel.....	7
Section C: Setup	11
Multi-Currency General Ledger Setup.....	11
Set-up Procedure Overview	11
Order to Convert Data and Set-up Multi-Currency Modules.....	11
Avoid a Support Call	12
Data Requirements	12
Account Group Maintenance	13
Main Account Maintenance	13
Account Maintenance.....	14
Section D: System Operations	17
G/L Data Entries.....	17
General Journal, Allocating Journal, Recurring Journal, and Transaction Journal	18
Section E: Reports	19
Section F: Uninstall DSD Enhancements.....	21
Section G: Resources and Support.....	23
Web Resources.....	23
Support.....	23

Section A: Introduction

This manual contains a description and instructions for this DSD product. Operating instructions are included for the features added by this product to Sage 100. For instructions on using Sage 100, refer to the appropriate Sage 100 manual, or call your Sage 100 reseller. DSD Business Systems offers excellent Sage 100 support, at an hourly rate.

General Ledger Multi-Currency Features

- **Base Currency: Please refer to the CUMC User Manual when setting up your Base Currency.** The Base Currency is the currency in which all General Ledger transactions will be maintained. The Base Currency is the "functional" or "local" currency of the Base economic environment in which the Company operates. You specify a Round-off For Reporting Account to use when printing financial reports in other currencies to collect recalculated values and create a balancing entry.
- **FASB 52 Foreign Currency Translation: Please refer to the CUMC User Manual when setting up your FASB 52 Currency.** You may define a Foreign Currency to be used when generating Foreign Translated Financial Statements conforming to FASB 52 requirements. You may change the FASB 52 Currency at any time and recalculate the FASB 52 amounts. You specify an Equity Adjustment from Translation Account to use when printing Financials in FASB 52 Currency to collect recalculated values and create a balancing entry.
- **FASB 52 Foreign Currency Translation Method:** You may specify the FASB 52 Translation (Historical Rate or Current Rate) in Account Group Maintenance, Main Account Maintenance, and Account Maintenance. Additionally, there is an **Update FASB 52 Translation** utility on the Multi-Currency Utilities Menu that allows update of this setting from Account Group to Main Account, and from Main Account to Account.
- **Multi-Currency Journal Entry:** You define a Currency Code and Exchange Rate when doing Journal Entries. The Journals will print in both Base Currency and Entry Currency.
- **Transactions Posted to the Bank Reconciliation module in Bank Currency:** Transactions posted from the Transaction Journal to Bank Reconciliation are posted in the Bank Currency for Reconciliation purposes **when BRMC is installed.**
- **Print Reports in Any Currency:** Print any report in Base, FASB 52 or Other Currency using As Posted or Current Amounts in an Override Rate.

Reports

GLMC modifies:

- Account Group Listing
- Allocation Journal
- Financial Statements
- Chart of Accounts
- G/L Detail Report
- G/L Detail by Source Report
- General Journal
- Main Account Listing
- Recurring Journal
- Transaction Journal
- Trial Balance

Section B: Getting Started



Important – Read this section prior to installing this enhancement.

Updated Modules

This enhancement modifies several Sage 100 modules. If you reinstall one of the Sage 100 modules listed in the following table, you must also reinstall this enhancement. **Enhancements from different Sage Tech Partners may not be designed to work together.**

Module	GLMC
General Ledger	✓

If you are upgrading Sage 100 with a Product Update, check the DSD website for compatibility before upgrading. A new version of the enhancement may be required.

If you are upgrading Sage 100 to a new version (e.g., 2021 to 2023), you must obtain the latest compatible release from the DSD website prior to installing and converting.

Ensure the compatibility of all enhancements with the version being upgraded to prior to starting the installation process. Work with your reseller to ensure that enhancements are compatible with each other and note the proper order in which they should be installed.

Installation

Back-up: Exit all Sage 100 sessions. Back-up existing Sage 100 data.

Check Levels: Sage 100 module levels must match those listed above.

Run Enhancement Setup Program: Save the executable installation program (sent to you or downloaded from our website) in a convenient location on the Sage 100 server. Launch the program from Windows Explorer or by selecting Start/Run, and then browse for the file in the location you saved it. Follow on-screen instructions.

Send your Sage Serial Number to your DSD Representative: Send your Sage Serial Number to your DSD representative in order for us to send you back the encrypted keys to unlock your system. This serial number can be found in Library Master\Setup\System Configuration, Tab 3. Registration as Serial Number.

Re-Start Sage 100: Sage 100 will be updated.

Update Security: After installation, you may not see the modules you installed on the Launcher menu. You will need to update all your security Roles to include access to the newly installed modules. Make sure your user has sufficient rights to modify Role Maintenance and add access to the new DSD enhancements to the appropriate Roles.



If this is your first DSD enhancement, make sure to add the DSD Enhancement Control Panel in the Library Master module to an appropriate Role.

Run the DSD Enhancement Control Panel: Run the DSD Enhancement Control Panel from the Library Master module under the Utilities menu.

DSD Enhancement Control Panel

Starting with version 3.61, all DSD Enhancement products include DSD's Enhancement Control Panel. The DSD Enhancement Control Panel is accessed from the Library Master Utilities menu.

The DSD Enhancement Control Panel is a simple to use yet powerful system to help maintain DSD Enhancements installed on a Sage 100 system. To use it, select an Enhancement product from the list on the window and then click the button, on the right side of the window, which corresponds with the desired task.

View Manual: This button will display the product manual for the selected Enhancement using Adobe Acrobat. For this to be possible, the PDF file for the corresponding manual must be in the “MAS90/PDF” folder in the Sage 100 system. If the file is not present, and the system has web access, the correct PDF file will be automatically downloaded from the DSD website, put into the “MAS90/PDF” folder and then displayed.

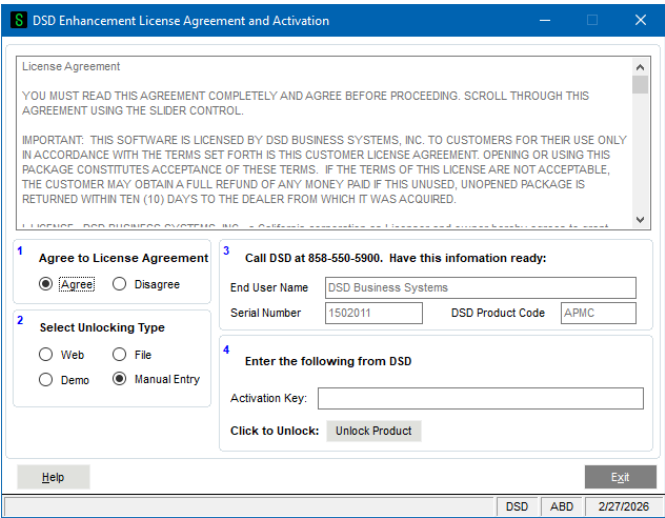
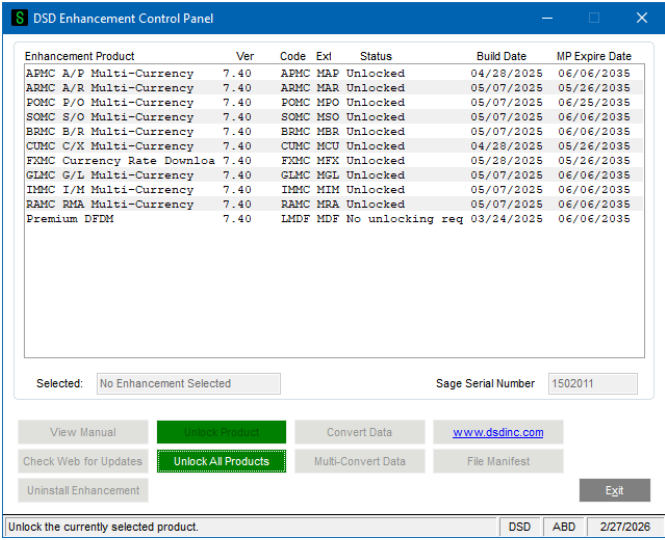
Check the Web for Updates: This button will check the DSD website to see what the current build is the selected Enhancement and alert the user if a later version is available. *This requires an internet connection on the Sage 100 system.*

Unlock Product: This will cause the DSD Enhancement License Agreement and Activation window to appear. DSD Enhancements must be unlocked to run. When any part of the Enhancement is run for the first time, the DSD Enhancement License Agreement and Activation window will appear. Follow the steps shown on that window. You can click the Help button for more detailed instructions. *This button is disabled if the selected Enhancement is already unlocked or if unlocking is not required.*

Agree to the License Agreement: On the DSD Enhancement License Agreement and Activation window, click on the Agree button to accept the DSD License Agreement. After accepting the License Agreement, you can then select the type of unlocking that you’d prefer. The choices are File, Web, Demo and Manual Entry.

File Unlock: After receiving your encrypted serial number key file from DSD, and placing that file in the MAS90/SOA directory, selecting this option will unlock all products keys contained in the file. This means you can unlock all enhancements at once using this option.

Web Unlock: If the system that is running the DSD Enhancement **has web access** and you **have sent DSD your Sage Serial number**, you can unlock the Enhancement without assistance using Web Unlock. When this option is selected, the licensing program will attempt to download encrypted



serial number key file from DSD **and then proceed to unlock all enhancements contained in the file.**

Demo Unlock: If a Demo mode is available for the Enhancement you're running, you will be able to Demo unlock the product without assistance from DSD for demo purposes.

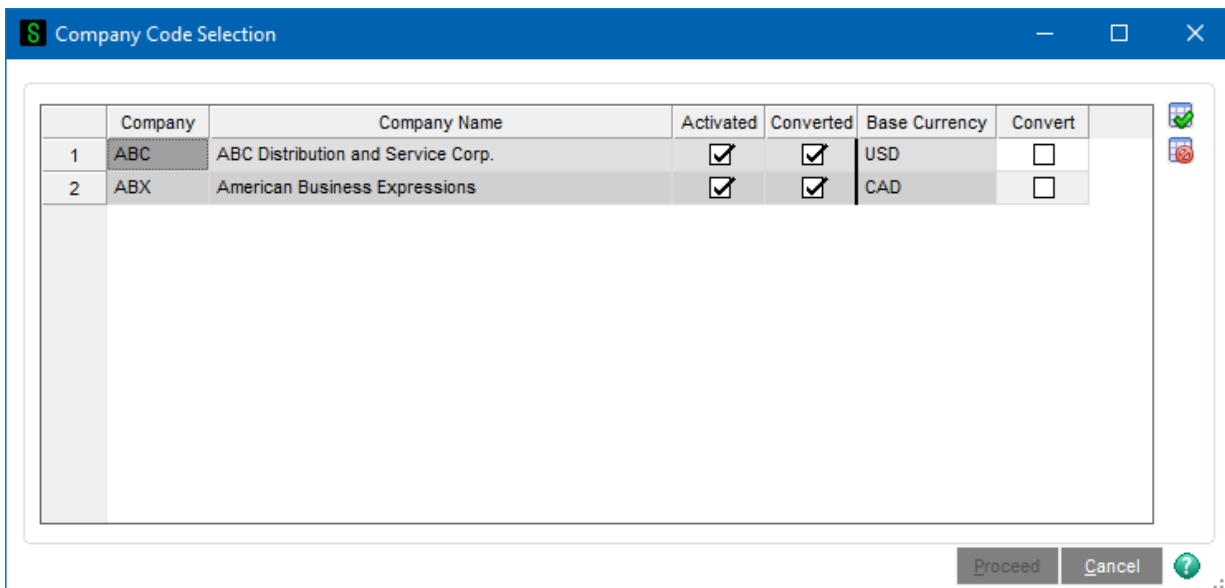
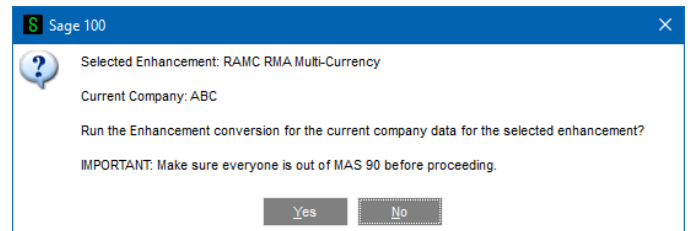


Creating a Demo Unlock is a good way to temporarily unlock DSD Enhancements off-hours, if you do not have web or email access. Later, you can unlock the product fully, during business hours.

Manual Entry Unlock: If you want to unlock a single enhancement using a single encrypted key, you can select this option and enter the 64 character key you receive from DSD by copy and paste.

Unlock All Products: This will cause the DSD Enhancement All License Agreement and Activation window to appear. This window is similar to the one described on the previous page but has only web and file as options to unlock. *This button is never disabled.*

Convert Data: After verification, the selected Enhancement's data conversion program will run. Data conversion is non-destructive and may be triggered any number of times. Sometimes this is required to fix data records imported or updated from a non-enhancement installation.



Multi-Convert Data: Multiple Companies can be converted at the same time for a given Enhancement.

Help: The Help button, located at the bottom right of the window, opens an HTML help file.

Get Adobe Acrobat: Opens the Adobe Acrobat website to the page where Acrobat can be downloaded and installed.

Uninstall Enhancement: If this option is available, then selecting this button will start the un-install process, removing the enhancement from the system. For more information see [Uninstall DSD Enhancements](#).

Section C: Setup

Multi-Currency General Ledger Setup

Set-up Procedure Overview

Set-up CUMC Multi-Currency before any other modules. This must be done first. Then set-up all installed Multi-Currency modules, before performing transactions in any modules.

1. Install General Ledger Multi-Currency, as described, above. It is Ok to install all of the DSD Multi-Currency modules at once, in any order. Usually it's best to install the CUMC module last. **The best choice is to do all conversions in the [DSD Enhancement Control Panel](#), as in the previous page above.**
2. In the Multi-Currency Main Menu, select Multi-Currency Options. If you are running this the first time it will take you to the Company Maintenance screen to Activate the C/X module first. You will then have to select the Options again. There is a check box for "Enable Multi-Currency", which implies that you can choose only certain Companies to enable Multi-Currency. But no, **every active Company must have Multi-Currency set up.**
3. You **MUST define a Base Currency** on the Main tab before continuing with any other module conversions. You may set up FASB 52 and accounts here if GLMC is to be used in a FASB52-required company. Be certain that the Round Off For Reporting and FASB52 Equity accounts are not posted to from anywhere else. Refer to the CUMC User Manual for information on the CUMC setup.
4. If required, set-up FASB 52 and accounts. Be certain that FASB52 Equity account is not used anywhere else. The conversion program will run after this setup
5. Set-up any other currencies in CUMC, Currency Code Maintenance.
6. In G/L Setup, run G/L options, which will run the conversion program for GLMC. **Or use the DSD Enhancement Control Panel to do the conversion.** See the CUMC manual for details.

Order to Convert Data and Set-up Multi-Currency Modules

General Ledger Multi-Currency must be set-up and converted first as other conversions rely on GLMC data during conversion and set-up. Note that the modules are converted/set-up in the same order that they appear on the Modules menu in the Sage 100 Launcher program..

1. General Ledger Multi-Currency (GLMC)
2. Accounts Receivable Multi-Currency (ARMC)

3. Accounts Payable Multi-Currency (APMC)
4. Inventory Management Multi-Currency (IMMC)
5. Sales Order Multi-Currency (SOMC)
6. RMA Multi-Currency (RAMC)
7. Purchase Order Multi-Currency (POMC)
8. Bank Reconciliation Multi-Currency (BRMC)

Avoid a Support Call

Keep these notes in mind while installing and setting-up Multi-Currency.

1. Once the Base Currency is set-up, it *cannot* be changed.
2. It is best to set-up/convert the various Multi-Currency modules in the proscribed order below. **However, CUMC must be first in order to define the Base Currency.**
3. Do not invert exchange rates. See **Exchange Rates in the CUMC Manual** for details and examples.
4. Make sure that **Round-off for Reporting or FASB52 Equity** accounts are not used elsewhere.
5. Set-up each Multi-Currency module installed on the system before performing any transactions in any module.

Data Requirements

Before beginning the Multi-Currency Startup process, you should have the following information available:

- List of Currencies used including the Base Currency and all foreign currencies in which the company processes transactions.
- Round-off and Round-off For Reporting Account numbers to be used in General Ledger postings and reports.

Additionally, if you will be using the **FASB 52** reporting capabilities of this module, you will need this information before starting:

- FASB 52 Reporting Currency.
- Equity Adjustment from Translation Account number to be used when printing FASB 52 Translated Financial Statements.
- FASB 52 Translation Type (Historical or Current) to be used for each Account Break.
- FASB 52 Beginning Balance for each account in the FASB 52 Reporting Currency.

A **Currency Button** appears in all Multi-Currency related screens. Select this button to access the new Multi-Currency fields.

Account Group Maintenance

If you checked the **FASB 52 Translation Required** check box in the Multi-Currency Options, the Account Group Maintenance list box will have a new column enabled: **FASB 52 Translation**.

Select the cell to change and utilize the drop box to maintain each Group setting. **Read the CUMC manual to know the difference between Current and Historical.**

Account Group	Description	Category	Account Type	Cash Flow Type	FASB 52 Translation
1 000	CURRENT ASSETS	Assets	Cash	None	Current
2 150	PROPERTY, PLANT AND EQ	Assets	Cash	None	Current
3 180	OTHER ASSETS	Assets	Cash	None	Current
4 200	CURRENT LIABILITIES	Liabilities	Current Liability	None	Current
5 275	LONG TERM DEBT	Liabilities	Current Liability	None	Current
6 300	EQUITY	Equity	Stockholder Equity	None	Historical
7 400	REVENUES	Revenue	Net Sales	None	Historical
8 450	COST OF SALES	Cost of Sales	Cost Of Sales	None	Historical
9 500	OPERATING EXPENSES - CE	Expenses	Operating Expense	None	Historical
10 600	OPERATING EXPENSES	Expenses	Operating Expense	None	Historical
11 700	GENERAL & ADMINISTRATN	Expenses	Operating Expense	None	Historical
12 950	OTHER INCOME & EXPENSE	Other Income & Expen	Other Inc. & Exp.	None	Historical
13 990	PROVISION FOR INCOME TA	Income Tax	Income Tax	None	Historical
14					

The Account Group Listing has been enhanced to print this new setting.

Main Account Maintenance

If you checked the **FASB 52 Translation Required** check box in the Multi-Currency Options, the Main Account Maintenance Screen prompt will include a new **Currency Button**.

The **FASB 52 Translation** setting to be used by each Main Account can be maintained. When an individual Main Account is created this field will default to the value entered in its corresponding Account Group. The user may later modify the field in a specific G/L Account through the Account Maintenance option in the G/L Main menu.

Select the Currency button to access the following Multi-Currency Settings panel:

FASB 52 Translation: Select **Historical** to use the Historical Rate method when performing FASB 52 - Foreign Currency Translations for this Main Account or **Current** to use the Current Rate method.

Multi-Currency Settings

FASB 52 Translation: Historical

OK



NOTE: See the *Multi-Currency Utility* "Update FASB 52 Translation" in the *CUMC Manual*.

Account Maintenance

If you checked the **FASB 52 Translation Required** check box in the Multi-Currency Options, the Account Maintenance Screen prompt will include a new **Currency Button**.

The **FASB 52 Translation** to be used by each Account can be maintained. When an individual Account Number is created this field will default to the value entered in its corresponding Main Account.

Select the Currency button to access the following Multi-Currency Settings panel:

FASB 52 Translation: Select **Historical** to use the Historical Rate method when performing FASB 52 - Foreign Currency Translations for this Account or **Current** to use the Current Rate method.



NOTE: See the *Multi-Currency Utility* "Update FASB 52 Translation" in the *CUMC Manual*.

S Account Maintenance (ABC) 1/1/2026

Account No.

Description

1. Main 2. History 3. Variance 4. Transactions Base Fiscal Year 2025

Period	Ending	Beginning Balance	Debits	Credits	Ending Balance
01	Jan 31	14,753.95	398,343.91	387,915.42	25,182.44
02	Feb 28	25,182.44	513,138.53	508,656.38	29,664.59
03	Mar 31	29,664.59	432,242.58	439,560.82	22,346.35
04	Apr 30	22,346.35	383,734.25	359,622.89	46,457.71
05	May 31	46,457.71	501,545.81	599,907.54	51,904.02-
06	June 30	51,904.02-	243.34	.00	51,660.68-
07	July 31	51,660.68-	.00	.00	51,660.68-
08	Aug 31	51,660.68-	.00	.00	51,660.68-
09	Sept 30	51,660.68-	.00	.00	51,660.68-
10	Oct 31	51,660.68-	.00	.00	51,660.68-
11	Nov 30	51,660.68-	.00	.00	51,660.68-
12	Dec 31	51,660.68-	.00	.00	51,660.68-
Total		14,753.95	2,229,248.42	2,295,663.05	51,660.68-

At the top of the panels, a Multi-Currency drop-down is available to switch the amounts from Base to Entry (and to FASB52, if setup). This re-display occurs for both History and Transactions tab.

Also available on the **Transactons Tab** is a 'green dollar sign' button to select to display the information held in a Transaction Detail record. Highlight the Transaction and then select press the **\$** button.

Account Maintenance (ABC) 1/1/2026

Account No. 101-01-00
Description Cash in bank - Reg. checking

1. Main 2. History 3. Variance 4. Transactions

Base Entry FASB Fiscal Year 2025

Per	Date	Journal	Posting Remark		Credit
01	1/31/2025	CD-000010	PAYABL/Monthly Payables Paym...		172,746.27
01	1/31/2025	CR-000001	A/RCOL/Monthly A/R Collections	398,343.91	
01	1/31/2025	JE-000012	SAVING/Monthly Savings Transfer		100,000.00
01	1/31/2025	PR-000011	PAYROL/Monthly Payroll		115,169.15
02	2/28/2025	CD-000023	PAYABL/Monthly Payables Paym...		166,183.85
02	2/28/2025	CR-000015	A/RCOL/Monthly A/R Collections	513,138.53	
02	2/28/2025	JE-000026	SAVING/Monthly Savings Transfer		225,000.00
02	2/28/2025	PR-000025	PAYROL/Monthly Payroll		117,472.53
03	3/31/2025	CD-000031	EQUIP/Equipment Purchase		1,000.00
03	3/31/2025	CD-000037	PAYABL/Monthly Payables Paym...		181,284.32

Beginning	Debit	Credit	Net Change	Ending Balance
14,753.95	2,229,248.42	2,295,663.05	66,414.63-	51,660.68-

Accept Cancel Delete

Multi-Currency Detail

Entry Currency: CAD Canadian Dollar

Base Amount: Debit .00 Credit 4,700.00

Exchange Rate: 1.00000000 Date: 5/31/2025

Entry Amount: Debit .00 Credit 4,700.00

FASB52 Currency: USD US Dollar

Post to FASB 52?

FASB 52 Rate: .92163000

FASB 52 Amount: Debit .00 Credit 4,331.66

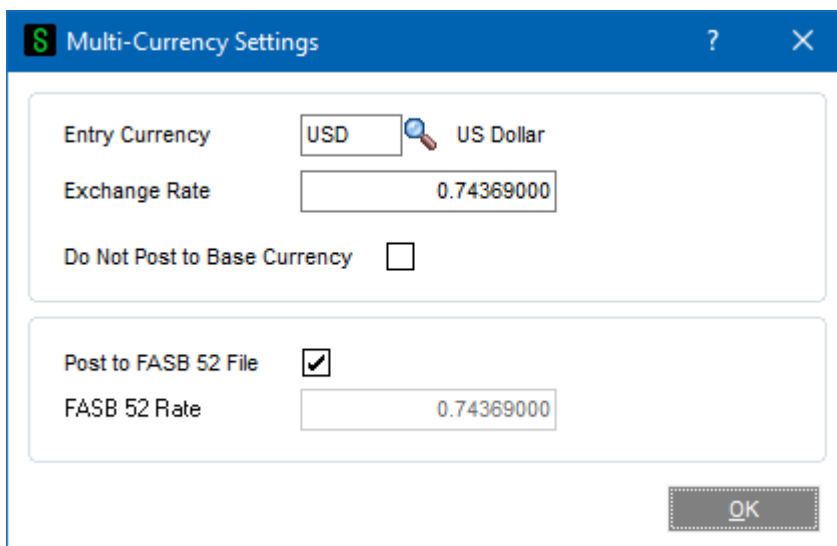
Accept Cancel

All the information contained in each transaction is displayed here.

Section D: System Operations

G/L Data Entries

All General Ledger data entries (General Journal Entry, Allocating Journal Entry, Recurring Journal Entry, and Transaction Journal Entry) have a **Currency Button** on the Header Panel. Select this button to access the **Multi-Currency Settings** panel.



Entry Currency: Enter the Entry Currency Code for the Journal entry. Select the Lookup Button to list all Currency Codes on file.



NOTE: *If amounts have already been entered, and the currency is changed, the entry amounts remain the same and will be considered to be in the new currency.*

Exchange Rate: Enter the Exchange Rate for the Journal entry. The rate will default to the Exchange Rate found in Currency Code Maintenance for the Posting Date. If the default Exchange Rate is overridden, then the Entry Amounts in the Lines Panel remain the same and will be converted to Base Currency when posting to General Ledger using the Exchange Rate entered.

Do Not Post to Base Currency: Select this check this box to create a Journal Entry that has zero value in the Base Currency, but can post in the Entry Currency and FASB 52 Currency. *This is a special use feature, please refer to the Appendix.*

Post to FASB 52 File: Select this check box to post the journal transactions to the FASB 52 accounts. This field will only be enabled if you checked the **FASB 52 Translation Required** check box option in the Multi-Currency Options.

FASB 52 Rate: If you selected the **Post to FASB 52 File** check box, you have the option of overriding the FASB 52 Rate. The default will be the rate found in Currency Code Maintenance for the FASB 52 Currency for the Posting Date.

Transaction Journal Bank Codes: If a Transaction Journal includes Bank Codes, and BRMC is installed, the Bank Account posted Amounts will be in the Entry Currency. Be sure the Bank Currency is the same as the Entry Currency.

General Journal, Allocating Journal, Recurring Journal, and Transaction Journal

The Journals have been modified to print both Entry Currency and Base Currency information. The Currency Code and Exchange Rate are also printed on the Journal.

Section E: Reports

When printing General Ledger Reports, the Base Currency is the default. However, you may select another Currency and Exchange Rate to use.

A **Currency Button** has been added to the Report Panel, and when selected, the following screen will be displayed (This screen will vary slightly depending on the report being printed and the options entered).

General Ledger Detail Report (ABC) 1/1/2026

Report Setting: STANDARD Currency.. Save

Description: General Ledger Detail Report

Setting Options

Type: Public Print Report Settings Number of Copies: 1

Default Report: Three Hole Punch: Collated:

Sort Report By: Account Number

Options

Selection Criteria: By Period Summarize Detail:

Fiscal Year: 2025 Source Type: All

Starting Period: 05 5/1/2025 Print Comments: Partial

Ending Period: 05 5/31/2025 Print Posted By/Date:

Print Condensed

Select Field	Operand	Value
Account Number	All	
Description	All	
Main	All	
Department	All	
Location	All	
Group Code	All	

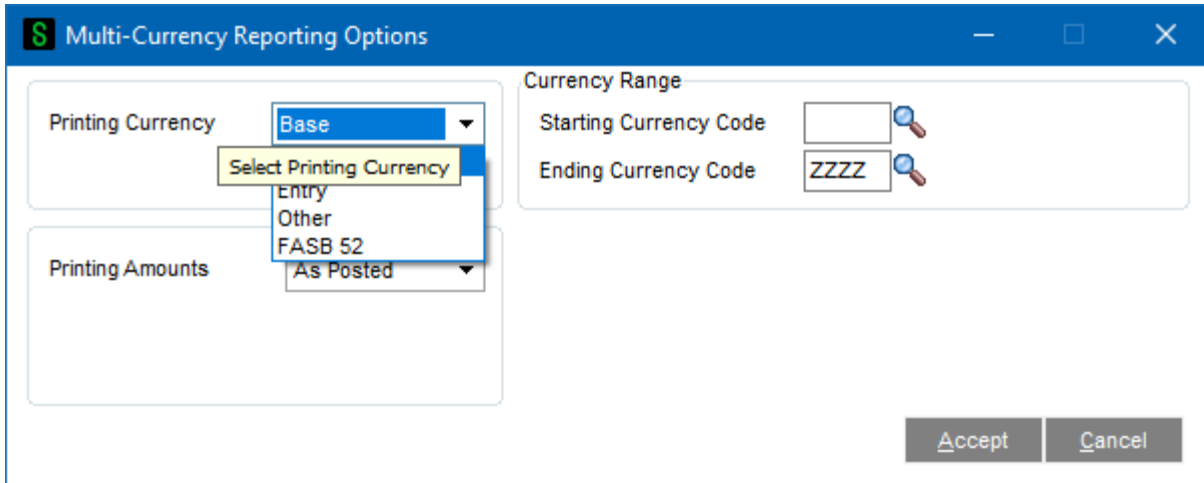
Microsoft Print to PDF Keep Window Open After

Print Preview Print Preview Setup

Printing Currency: Select **Entry** for Entry Currency, **Base** for Base Currency, **FASB 52** for FASB 52 Currency, or **Other** for Other Currency. (**Other** Currency is a special use selection which recalculates G/L amounts. Be sure you inspect and understand the results produced using this.)

Currency Code: Enter the Currency Code in which to print all amounts. This field will be displayed only if you selected **Other** as the **Printing Currency** option.

Currency Range: Enter a range of Currencies for a specific group of transactions. Select the List Mode to list all Currencies on file. This field will be displayed only for reports that print amounts from individual transactions, such as the G/L Detail Report.



Printing Amounts: Select **As Posted** to import all amounts As Posted or **Override Date** to convert amounts using an Exchange Rate as of an Override Date. This field will be displayed only if you selected **Other** as the **Printing Currency**.

Override Date: Enter a date to calculate amounts converted to the Printing Currency using the Exchange Rate as of this date. This field will be displayed only if you selected **Override Date** as the **Printing Amounts**.

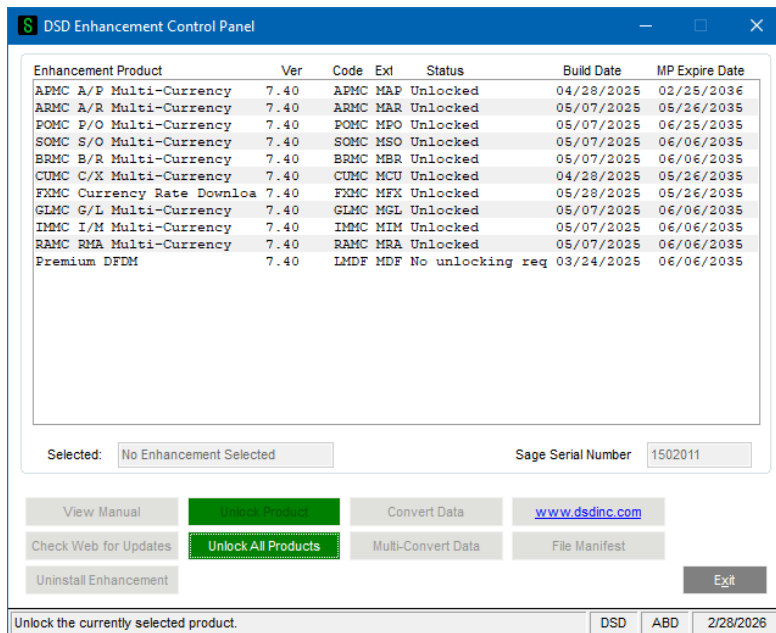
Rate Type: Select **GL Rate**, **AR/SO Rate**, **AP/PO Rate**, or **FASB 52 Rate**. This field will be displayed only if you selected **Override Date** as the **Printing Amounts**.

Round-off Account: This field will default to the account specified in the Currency Options Screen in General Ledger Options. Since currency conversion from one currency to another often requires rounding. This Round-off Account Number is for reporting purposes only, and does not result in a G/L posting of any kind.

Section F: Uninstall DSD Enhancements

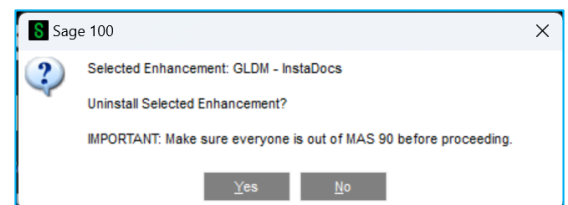
If you are uninstalling ALL Multi-Currency modules, **you must first remove the Multi-Currency Module data for each company code BEFORE running the Uninstall Process.** To do this, select each company in Company Code Maintenance and select the **Remove** button, then select the Multi-Currency module to remove. Do this for every company that has Multi-Currency activated. **Be sure to do a full system backup prior to doing this process.**

A DSD Enhancements Uninstall Utility has been provided for the purposes of removing DSD Enhancements from your Sage 100 System. This utility may be accessed from the **DSD Enhancement Control Panel** menu option on the **Library Master / Utilities** menu.



When accessing the **DSD Enhancement Control**, select the enhancement that you wish to Uninstall, and then select the **Uninstall Enhancement** button. The following message box will appear:

- Select **No** to exit the Uninstall Process.
- Select **Yes** to continue with the Uninstall Process.



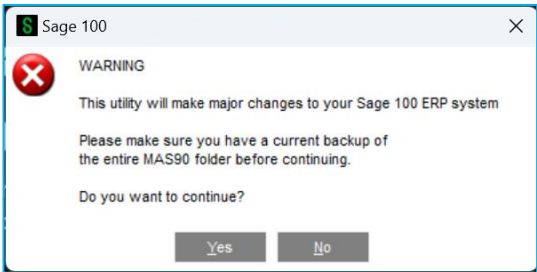
The following message box will appear, to remind you that a complete backup of your entire Sage 100 system should be completed prior to uninstalling a DSD product.

- Select **No** to exit the Uninstall Process.
- Select **Yes** to continue with the Uninstall Process.

After the Uninstall of the DSD Enhancement, you MUST reinstall certain standard Sage 100 modules, followed by reinstallation of Product Updates and Hot Fixes, if applicable.

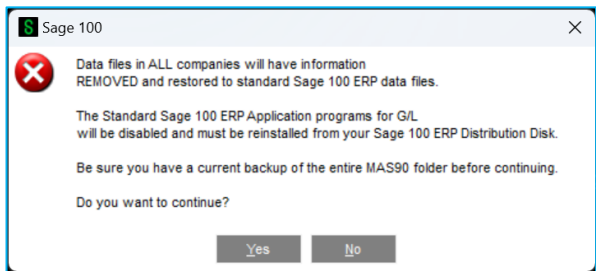
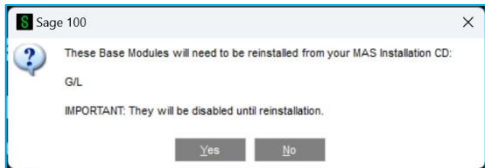
A message box will appear, and will display which of those specific Sage 100 modules you must reinstall afterwards.

- Select **No** to exit the Uninstall Process.
- Select **Yes** to continue with the Uninstall Process.

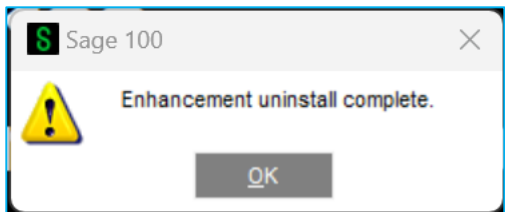


The following message box will appear, displaying the final warning message.

- Select **No** to exit the Uninstall Process.
- Select **Yes** to continue with the Uninstall Process. At this point, the DSD Enhancement will be removed from the Sage 100 system.



After completion of the Uninstall, the following message box will appear. Select OK to continue.



Now that the Uninstall process is completed, you must:

- Reinstall the applicable standard Sage 100 modules
- Reinstall the latest Sage 100 Service Pack/Updates, if applicable.
- Reinstall any other DSD Enhancements or Developer products that are affected from the reinstallation of the standard Sage 100 module(s).

Section G: Resources and Support

Web Resources

DSD web site: <http://www.dsdinc.com>

The Enhancement page contains:

- Current Release Schedule
- Purchasing Information
- Installation Instructions
- Product Support
- Enhancement Links

General Ledger Multi-Currency:

<https://www.dsdinc.com/enhancements/marketplace/products/glmc-multi-currency-general-ledger>

The product web page contains:

- Product Description
- Web Links
- Current Product Version Table
- Product Installation File Download
- Product Manual in .pdf Format

Support

DSD provides product support through Sage 100 resellers. Support is provided for the current version. Older versions are supported at an hourly rate.

- Telephone: 858-550-5900
- Fax: 858-550-4900
- Email: enhancements@dsdinc.com

For a hard error, where the program displays an error dialog, report:

- Enhancement Name
- Error number
- Program name
- Line number

- Program version
- Exact sequence that caused the error, including menus and menu selections
- Other pertinent information

If leaving a message, faxing or email, please include:

- Your name and company
- Your phone number (and fax if applicable) and extension.

It is possible to be unable to duplicate a problem, because of data corruption or because we have not exactly duplicated a particular operating environment. In such circumstances, we can only continue to try to fix the problem if we can either access the system remotely or by some other to duplicate the system.




Since 1984, DSD Business Systems has been providing clients with professional business consulting services and business software solutions across the globe. Specialties include Sage Intacct, Acumatica Cloud ERP, Sage 100, Sage 300, Sage 500, Sage CRM, Sage HRMS and more.

DSD Business Systems has been a Sage Tech Partner, commonly referred to as a “Master Developer”, for over 30 years. DSD currently has over 500 Enhancements to Sage 100 and has created thousands of custom solutions for end-users around the world. We have had the privilege of working with hundreds of Sage consultants, resellers, and end-users to produce powerful custom solutions that enhance the functionality of Sage 100.

Contact DSD Enhancements

 enhancements@dsdinc.com

 [Enhancements Marketplace](#)

 **800-627-9032**