



DSD Business Systems

Sage 100 Enhancements

SOMS

MAS*Ship

Version 5.20



Information in this document is subject to change without notice.

Copyright 1993-2017, DSD Business Systems All rights reserved.

MAS*Ship User's Manual
Version 5.20

18 December, 2017

DSD Business Systems
8787 Complex Drive
Suite 400
San Diego, CA 92123
858/550-5900 8:00am to 5:00pm PST
858/550-4900 Fax

Trademarks

ProvideX® is a Trademark of Sage Software.

Windows is a trademark of Microsoft Corporation.

Sage 100® is a registered trademark of Sage Software.

PXPlus® is a registered trademark of PVX Plus technologies

All other product names and brand names are service marks, and/or trademarks or registered trademarks of their respective companies.

This documentation and the software described herein, is prepared and published under license. Sage Software has not tested or verified either the software or any representation in this documentation regarding the software. Sage Software does not make any warranty with respect to either this documentation or the software described herein, and specifically disclaims any warranty, express or implied, with respect hereto, including the warranties of fitness for a particular purpose and merchantability.

Table of Contents

SECTION A: INTRODUCTION	4
WEB RESOURCES	4
SUPPORT	4
MAS*SHIP FEATURES	5
SECTION B: GETTING STARTED	6
REQUIRED LEVELS	6
INSTALLATION	6
DSD ENHANCEMENT CONTROL PANEL	8
SECTION C: SETUP	10
ODBC SETUP	10
FEDEX SHIP MANAGER – IMPORT/EXPORT SETUP	13
EXPORT DEFINITION FROM FEDEX	22
UPS WORLDSHIP – IMPORT/EXPORT SETUP	23
SHIPPER ID MAINTENANCE	33
CUSTOMER MAINTENANCE	33
SHIPPING RATE MAINTENANCE	34
SECTION D: SYSTEM OPERATIONS	35
SALES ORDER ENTRY	35
SHIPPING DATA ENTRY	36
PROCESSING SHIPMENTS	36
SECTION E: UNINSTALL DSD ENHANCEMENTS	37

Section A: Introduction

This manual contains a description and instructions for this DSD product. Operating instructions are included for the features added by this product to Sage 100. For instructions on using Sage 100, refer to the appropriate Sage 100 manual, or call your Sage 100 reseller. DSD Business Systems offers excellent Sage 100 support, at an hourly rate.

Web Resources

DSD web site: <http://www.dsdinc.com>

The Enhancement page contains:

- Current Release Schedule*
- Purchasing Information*
- Installation Instructions*
- Product Support*
- Enhancement Links*

SOMS MAS*Ship:

<http://www.dsdinc.com/enh/pages/SOMS.htm>

The product web page contains:

- Product Description*
- Web Links*
- Current Product Version Table*
- Product Installation File Download*
- Product Manual in .pdf Format*
- Revision History*
- FAQ*

Support

DSD provides product support through Sage 100 resellers. Support is provided for the current version. Older versions are supported at an hourly rate. DSD's telephone number is **858-550-5900**. Fax: **858-550-4900**.

For a hard error, where the program displays an error dialog, report:

- Error number.*
- Program name.*
- Line number.*
- Program version.*

*Exact sequence that caused the error, including menus and menu selections.
Other pertinent information.*

If leaving a message or faxing, please include:

Your name.

Your phone number (and fax if applicable) and extension.

It is possible to be unable to duplicate a problem, because of data corruption or because we have not exactly duplicated a particular operating environment. In such circumstances, we can only continue to try to fix the problem if we can either access the system remotely or by some other to duplicate the system.

MAS*Ship Features

MAS*Ship is a link for the Sales Order Module to integrate Sage 100 with UPS Worldship® or FedEx ShipManager® applications. Reduce shipping errors and know exactly when your orders have shipped. MAS*Ship provides a significant savings in data entry time.

KEY FEATURES

Easy to Use and Easy to Learn

Because you are still using the same program (UPS Worldship or FedEx Ship Manager) there are no new programs your warehouse users need to learn. However, with MAS*Ship UPS Worldship and FedEx Ship Manager can now integrate with Sage 100

Increased Accuracy

Connecting Sage 100 with UPS Worldship and FedEx Ship Manager will reduce data entry mistakes, increase shipping and invoicing efficiency and provide accurate up-to-date shipping information in MAS 90. Example in UPS Worldship, if an address is incorrect, UPS Worldship will automatically correct it and now with the MAS*Ship that address correction will also flow automatically thru to Sage 100 along with tracking numbers freight dollars and weight (freight dollars is an optional setting and not required).

Increased Efficiency

Instead of accounting re-entering information received from shipping, accounting now will just need to review the shipment batch, make corrections and print invoices. No more trying to decipher the cryptic notes and marks from shipping because now it is all kept in electronically in Sage 100 along with who processed the shipment.

Section B: Getting Started



- **If you reinstall or upgrade one of the Sage 100 modules listed in the following table, you must also reinstall this Enhancement.**
- Enhancements from different Sage Developers are generally not designed to work together. If installed together, problems are likely to occur.
- **Check with DSD before installing more than one Enhancement.**

Required Levels

Sage 100 Module	Module Required	Required Level
S/O	Y	5.20

Installation

1. **Back-up:** Exit all Sage 100 sessions. Back-up existing Sage 100 data.
2. **Check Levels:** Sage 100 module levels **must match** those listed above.
3. **Run Enhancement Setup Program:** Save the executable installation program (sent to you or downloaded from our website) in a convenient location on the Sage 100 server. Launch the program from Windows Explorer or by selecting Start/Run, and then browse for the file in the location you saved it. Follow on-screen instructions.
4. **Send your Sage Serial Number to your DSD Representative:** Send your Sage Serial Number to your DSD representative in order for us to send you back the encrypted keys to unlock your system. This serial number can be found in Library Master\Setup\System Configuration, Tab 3. Registration as Serial Number.
5. **Re-Start Sage 100:** Sage 100 will be updated.
6. **Unlock the Enhancement:** DSD Enhancements must be unlocked to run. When any part of the Enhancement is run for the first time, the **DSD Enhancement License Agreement and Activation** window will appear. Follow the steps shown on that window. *You can click the Help button for more detailed instructions.*

Note: On the next page is a screenshot of the DSD Enhancement License Agreement and Activation window.

After accepting the License Agreement, you can then select the type of unlocking that you'd prefer. The choices are File, Web, Demo and Manual Entry.

File Unlock: After receiving your encrypted serial number key file from DSD, and placing that file in the MAS90/SOA directory, selecting this option will unlock all products keys contained in the file. This means you can unlock all enhancements at once using this option.

Web Unlock: If the system that is running the DSD Enhancement *has web access* and you *have sent DSD your Sage Serial number*, you can unlock the Enhancement without assistance using Web Unlock. When this option is selected, the program will attempt to download encrypted serial number key file from DSD and then proceed to unlock all enhancements contained in the file.

- The Sage 100 system that is being used must have web access for this option to be effective.
- You can send your Sage Serial Number to your DSD Enhancements sales representative.

Demo Unlock: If a Demo mode is available for the Enhancement you're running, you will be able to Demo unlock the product without assistance from DSD for demo purposes.

- Creating a Demo Unlock is a good way to temporarily unlock DSD Enhancements off-hours, if you do not have web or email access. Later, you can unlock the product fully, during business hours.

Manual Entry Unlock: If you want to unlock a single enhancement using a single encrypted key, you can select this option and enter the 64 character key you receive from DSD by copy and paste.

Note: You can also unlock a DSD Enhancement through the [DSD Enhancement Control Panel](#) found on the Library Master Utilities Menu. Then, select the Enhancement with your mouse from the list of Enhancements and click the **Unlock Product** button on the right side of the window.

- Convert Data:** After unlocking, the DSD Conversion Wizard will appear. Follow on-screen instructions to complete data conversion. You can exit the conversion program without converting data. The Enhancement will not proceed, however, until data is converted. If you enter an enhanced program and data has not been converted, the conversion program will run again.

DSD Enhancement Control Panel

Starting with version 3.61, all DSD Enhancement products include DSD's Enhancement Control Panel. The **DSD Enhancement Control Panel is accessed from the Library Master Utilities menu.**

The DSD Enhancement Control Panel is a simple to use yet powerful system to help maintain DSD Enhancements installed on a Sage 100 system. To use it, select an Enhancement product from the list on the window and then click the button, on the right side of the window, which corresponds with the desired task.

View Manual: This button will display the product manual for the selected Enhancement using Adobe Acrobat. For this to be possible, the PDF file for the corresponding manual must be in the

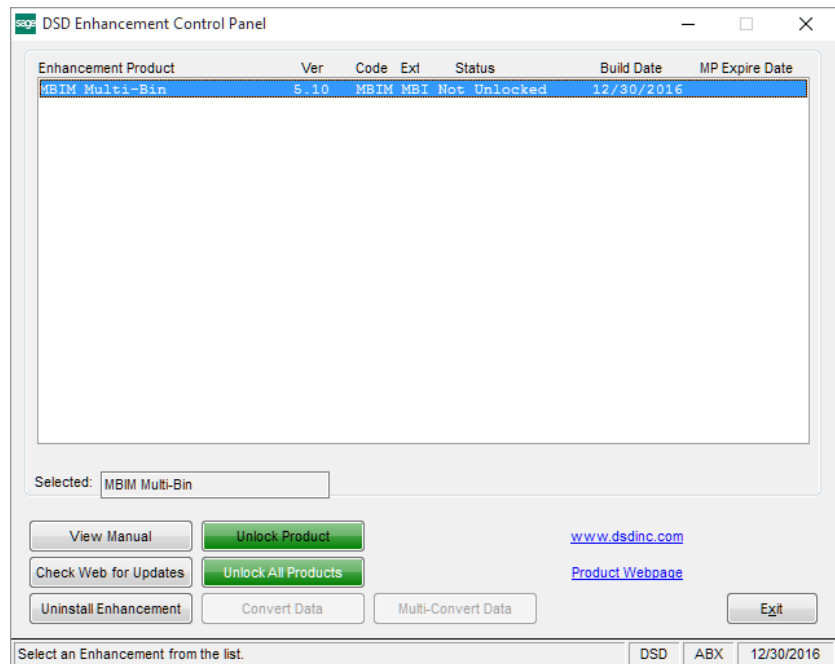
"MAS90/PDF" folder in the Sage 100 system. If the file is not present, and the system has web access, the correct PDF file will be automatically downloaded from the DSD website, put into the "MAS90/PDF" folder and then displayed.

Check the Web for Updates: This button will check the DSD website to see what the current build is the selected Enhancement and alert the user if a later version is available. *This requires an internet connection on the Sage 100 system.*

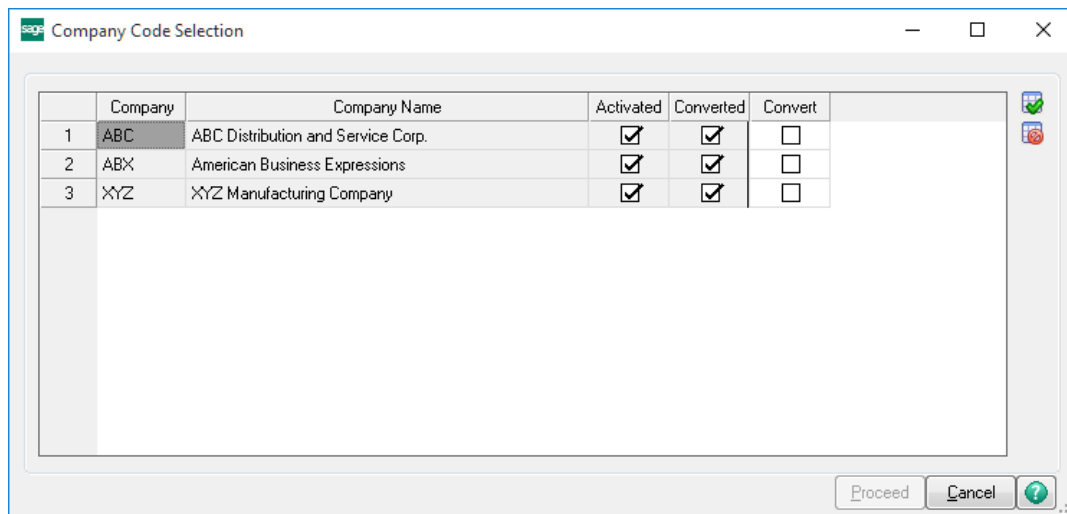
Unlock Product: This will cause the DSD Enhancement License Agreement and Activation window to appear. Using this window is described on the previous page. *This button is disabled if the selected Enhancement is already unlocked or if unlocking is not required.*

Unlock All Products: This will cause the DSD Enhancement All License Agreement and Activation window to appear. This window is similar to the one described on the previous page, but has only web and file as options to unlock. *This button is never disabled.*

Convert Data: After verification, the selected Enhancement's data conversion program will run. Data conversion is non-destructive, and may be triggered any number of times. Sometimes this is required to fix data records imported or updated from a non-enhancement installation.



Multi-Convert Data: Multiple Companies can be converted at the same time for a given Enhancement. *(If you have a large number of Companies to convert, please do in batches of 20 or fewer due to memory limitations.)*



Help: The Help button, located at the bottom right of the window, opens an HTML help file.

Get Adobe Acrobat: Opens the Adobe Acrobat website to the page where Acrobat can be downloaded and installed.

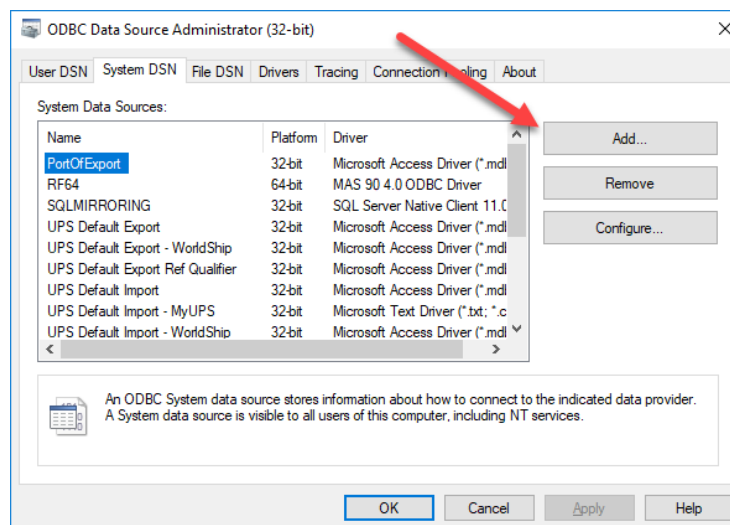
Uninstall Enhancement If this option is available, then selecting this button will start the un-install process, removing the enhancement from the system. (for more information see [Uninstall DSD Enhancements](#))

Section C: Setup

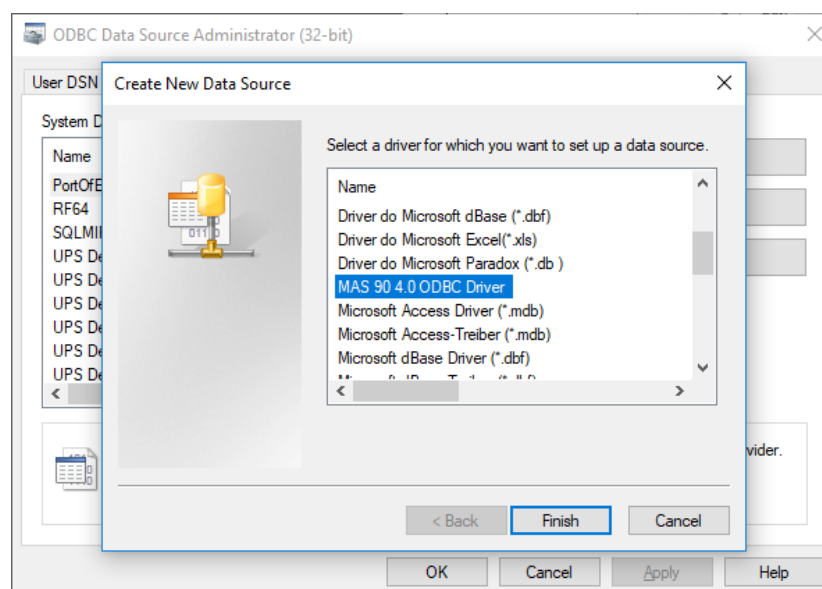
ODBC Setup

Note: The ODBC Data Source only needs to be setup once for FedEx and UPS. If you have all ready setup an ODBC Data Source for UPS you will not need to do it again for FedEx

To begin, go to the Windows 'Start' – 'Control Panel' – 'Administrative Tools' – 'Data Sources'
From the 'ODBC Data Source Administrator' screen select 'Add'



Select the MAS90 4.0 ODBC Driver and click 'Finish'.



Click on 'Finish'.

We will now need to fill in the options for the ODBC driver. Fill in the following fields for each 'Tab'

BASIC

Data Source Name: Type in SOTAMAS90_SHIP for the Data source name. Or if this is getting setup for multiple companies then make the data source name SOTAMAS90_XXX where XXX is the SAGE 100 company code.

Description: Reference field only.

Database Directory: This is the directory to your SAGE 100 installation. If this is a MAS200 install use a UNC path to the MAS90 directory.

LOGON

Company Code: Type in the SAGE 100 Company code this is getting linked to. (make sure to use Capital letters)

Default UserID: Type in the SAGE 100 user Id to login in as.

Password: Enter the SAGE 100 password for the user (this password is case-sensitive)

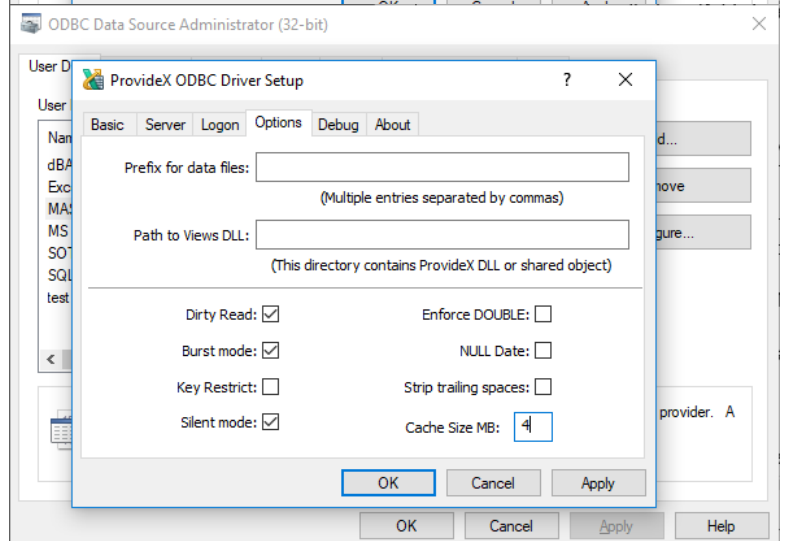
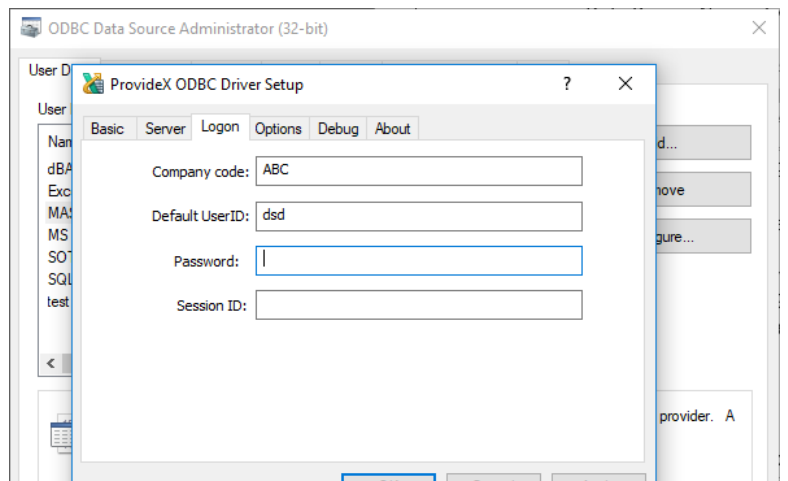
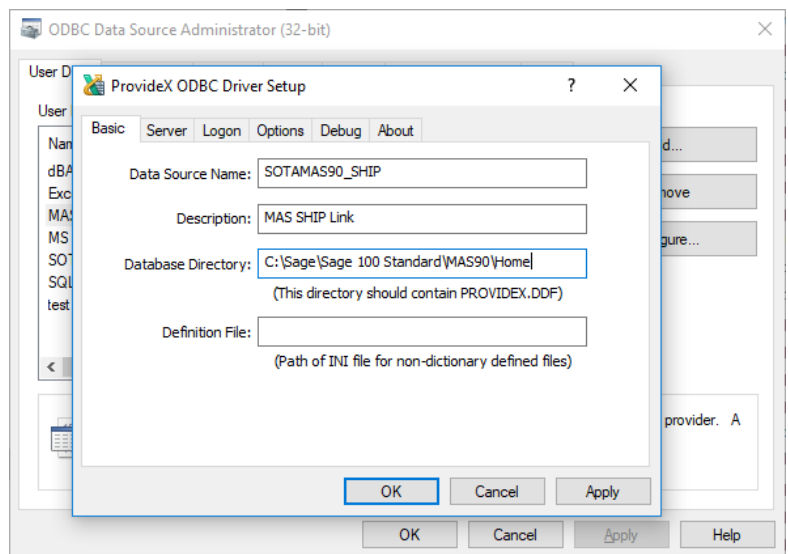
OPTIONS

Dirty Read: check this box on.

Burst Mode: check this box on.

Silent Mode: check this box on.

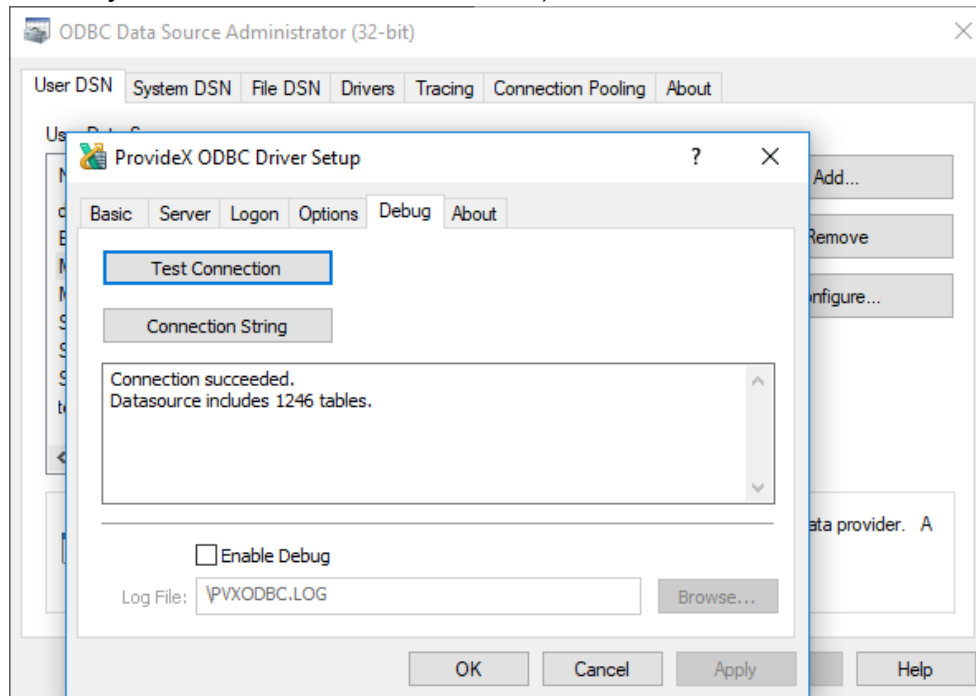
Cache Size MB: Set to 4



After the 'Options' have been set click 'Apply'.

DEBUG

Click on 'Test Connection' if everything is setup correctly you should receive a 'Connection Succeeded' message with the number of tables read. (number of tables can vary from installation to installation)



Fedex Ship Manager – Import/Export Setup

NOTE: This setup must be repeated on each workstation that has FedEx Ship Manager loaded and must be done at the FedEx workstation not the server.

Launch FedEx Ship Manager.
From the 'Menu' bar click on
'Integration' – 'FedEx Integration
Assistant'

The Integration Assistant Wizard
should launch. Click through the
following two welcome screens.

FedEx Integration Wizard will now ask
us what kind of integration we want to
do. Select 'Both Import and Export'
Select 'Create a new profile' and then
click 'Continue'.

Which type of integration profile do you need?

Select the type of profile that you want to create.

☐ Import

☐ Export

☒ Both Import and Export

Customer ID	Company	Country	Contact
AA001ND02	Atlas Machine	USA	Swiggood
AX002AD01	Baskets Galore	Canada	Jones
AX003SD01	Best Computers	USA	Davis
BB001JD02	Taylor Finishing	USA	Rinehart

Recipient Information

Recipient ID: Ship to:

Country: OC-CANADA

Company Name: Owen Jam

Address 1: Baskets Galore

Address 2: 1234 Central Blvd

City: L1

What do you want to do?

Select "Create a new profile" to start a new profile. Select "Edit an existing profile" if you want to create a new profile by editing an existing profile, or if you want to complete an unfinished profile.

☒ Create a new profile

Start a new profile (Clears all unsaved changes).

☐ Edit an existing profile

Select the profile that you want to edit. To delete a profile, select it, and then click Remove.

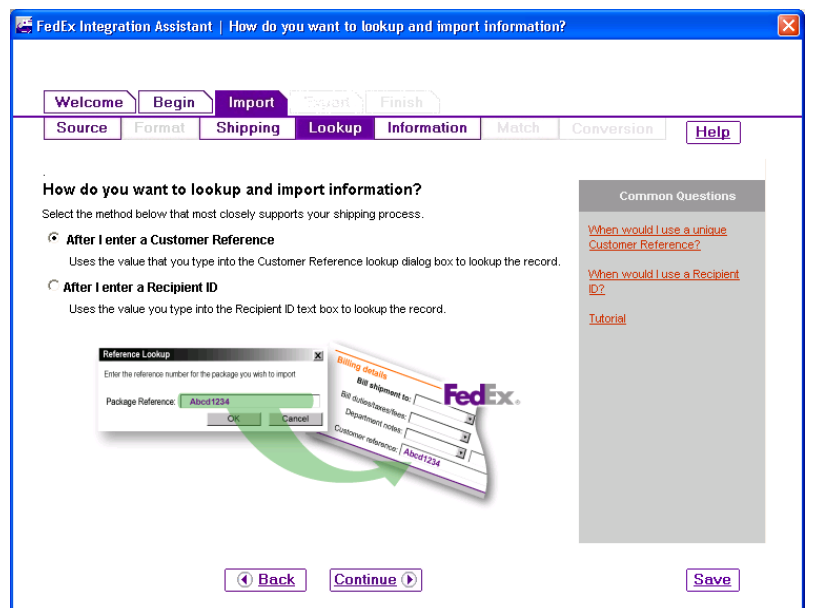
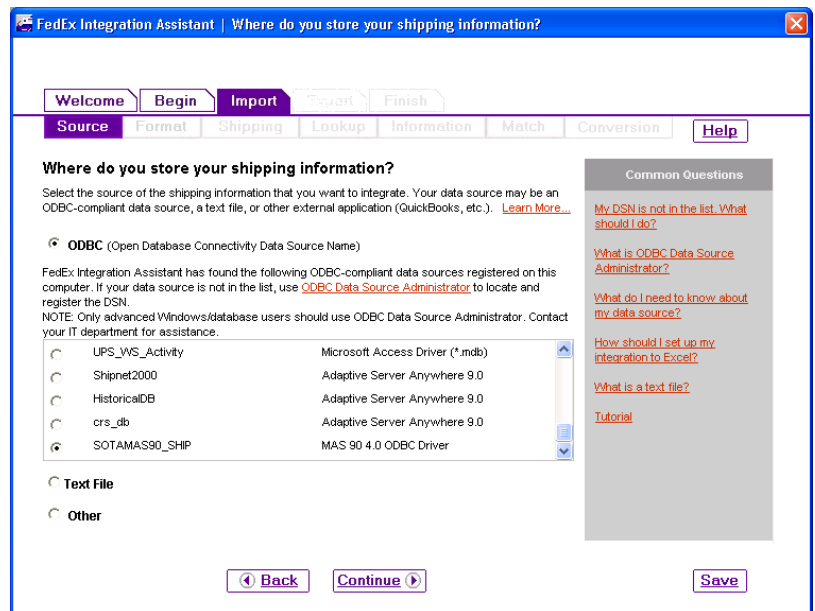
We now come to the 'Import' section of the Wizard, select 'ODBC'.

SOURCE: Now select the 'SOTAMAS90_SHIP (or if you are setting this up for multiple companies then select the 'SOTAMAS90_XXX where XXX is the SAGE 100 company code.)

NOTE: if you are setting this up for multiple company codes then you will need to setup an integration profile for each individual company code.

SHIPPING: Select 'Single Edit' option at the bottom of the screen.

LOOKUP: we want to lookup and import our information 'After I enter a Customer Reference'



INFORMATION: on the Information screen click on the 'All Fields' line and select the following fields

RECEPIENT

- Address 1
- Address 2
- City
- Company
- Contact Name
- Country
- Phone
- Postal Code
- State/Province

PACKAGE

- Account Number
- Bill Transportation to
- Ground Invoice Number
- P.O. Number
- Package Type
- Residential Delivery Flag
- Service Type
- Weight

SPECIAL SERVICES

- Amount (COD)
- Delivery Flag (Saturday Services)
- Recipient Shipment Notification
- Recipient e-mail

FedEx Integration Assistant | What types of information do you want to import?

Welcome Begin **Import** Export Finish

Source Format **Shipping** Lookup **Information** Match Conversion Help

What types of information do you want to import?

Select the FedEx Ship Manager data group(s) that you want to populate with data from your data source. The category choices provided here match the key data entry areas in FedEx Ship Manager.

- ◆ Recipient
- ◆ Package
- ◆ Sender
- ◆ Special Services
- ◆ International
- ◆ All Fields

Common Questions

[What shipping information is in each category?](#)

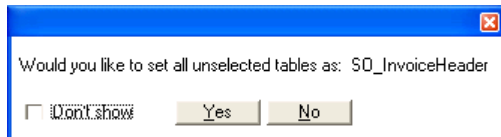
[What information is required to ship a package?](#)

[How do I use the All Fields option?](#)

[Tutorial](#)

Back Continue Save

MATCH: On the Match screen is where we will map each SAGE 100 field to the appropriate FedEx field. To begin select the 'SO_InvoiceHeader' table as the source and say 'Yes' to set all unselected tables as this table.



PACKAGE

FedEx Field	SAGE 100 Field
Bill Transportation To	D516FedExBilling
Ground Invoice Number	InvoiceNo
P.O. Number	CustomerPONo
Package Type	Set as your default FedEx package Type
Residential Delivery Flag	ResidentialAddress
Service Type	D516FedExService
Weight	Check the box 'Scale'

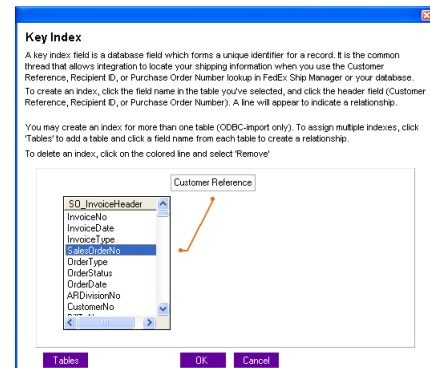
RECEIPT

FedEx Field	SAGE 100 Field
Address 1	ShipToAddress1
Address 2	ShipToAddress2
City	ShipToCity
Company	ShipToName
Contact Name	ConfirmTo
Country	ShipToCountryCode (set default as US)
Phone	D516ShipToPhone
Postal Code	ShipToZipCode
State/Province	ShipToState
Account Number	D516ShippingAccount

SPECIAL SERVICES

FedEx Field	SAGE 100 Field
Cash on Delivery Amount	D516TotalValue
Saturday Services Delivery Flag	D516SaturdayDelivery
Ship Alert Recipient e-mail	EmailAddress
Ship Alert Recipient Shipment Notification	D516ShipmentNotification

INDEX – Once all the fields have been mapped click on the 'Index' button at the bottom and select SalesOrderNo as the Index value.



CONVERSION: To make sure fields convert correctly to the right value we need to match the SAGE 100 value to the FedEx value. The following fields need conversions set:

Residential Delivery

- No/False = N
- Yes/True = Y

Country – FedEx only has only a two character country code, SAGE 100 uses 3 characters. To make sure the FedEx and SAGE 100 values match up correctly you have two options.

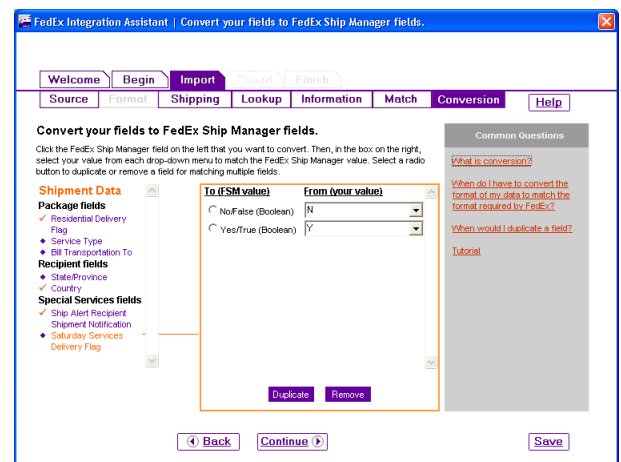
- Set your SAGE 100 country codes to match FedEx (*If you only use 2 characters in SAGE 100 and set them up the same as FedEx they will come over correctly without conversion*) or
- Go into the conversion tables and assign the FedEx country code to the correct SAGE 100 three character value.

Ship Alert Recipient

- No/False = N
- Yes/True = Y

Saturday Services Delivery Flag

- No/False = N



- Yes/True = Y

EXPORT DESTINATION: Select the destination as a 'Text File' and then browse and select the 'Manifest.csv' found in the ..\MAS90\MAS_ABC\SOABC directory where 'ABC' is the SAGE 100 company code you are linking to.

NOTE: You may need to create a 'Manifest.csv' file, if you do type in 1 thru 19 with each number separated by a comma

EXPORT FORMAT: Select the following options for the text file format

- Delimited
- {comma} – the character used to separate the fields
- 'No' for field headings

EXPORT METHOD: Select the Method for exporting the records processed in FedEx ship manager, select the following options.

- When do you want to export to your data source? – Each time a shipment is completed.
- How do you want to update your data source? – Insert a new record

EXPORT INFORMATION: Select the information to be exported. On the Information screen click on the 'All Fields' line and select the following fields.

TRACKING

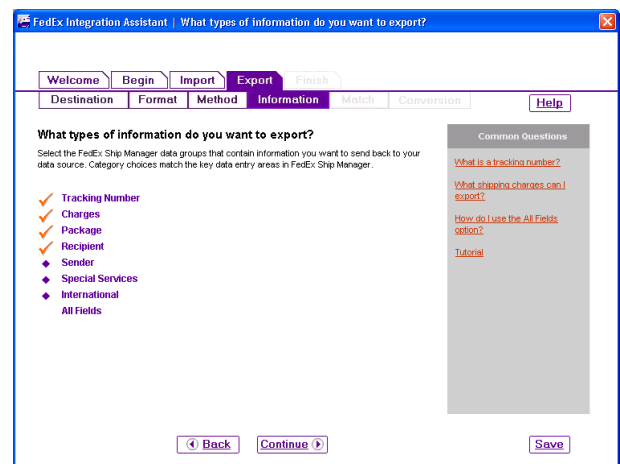
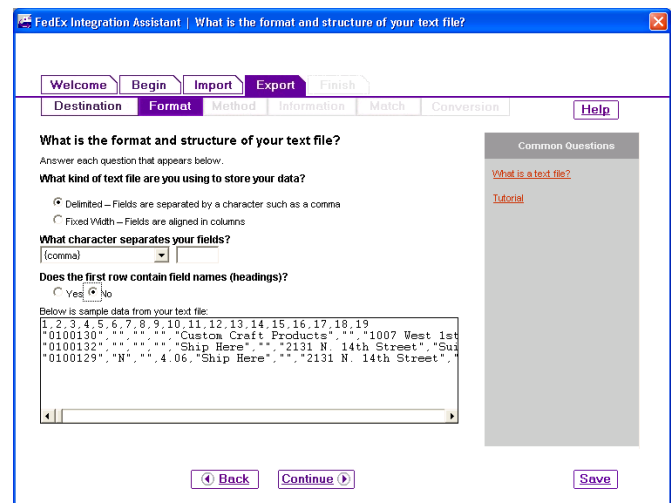
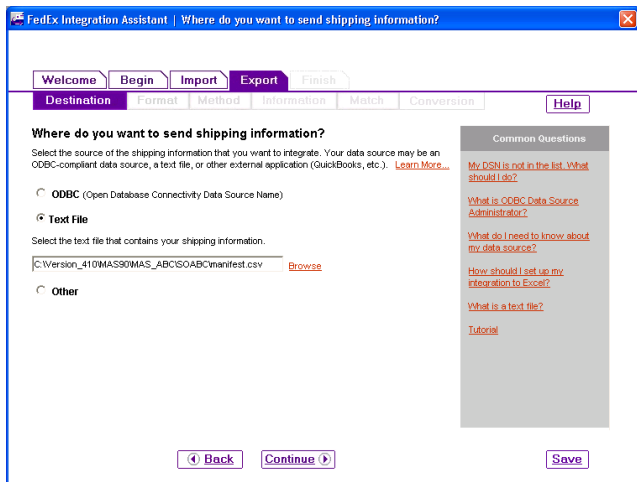
- Tracking Number

CHARGES

- Gross Charge
- Net Charge

PACKAGE

- Ground Invoice Number
- P.O. Number



- Service Type
- Weight

RECEPIENT

- Address 1
- Address 2
- City
- Company
- Contact Name
- Country
- Postal Code
- State/Province

SPECIAL SERVICES

- Recipient Delivery Notification
- Recipient Shipment Notification

EXPORT MATCH: On the Match screen is where we will identify how each FedEx field will be sent back to SAGE 100. To begin follow the table mapping below.

CHARGES

FedEx Field	Export Column
Customer Rates Gross Charge	Field16 (<i>Package charge – since FedEx does not export the package charge we fill it with the gross charge. This field currently does not get written back to SAGE 100</i>)
Customer Rates Net Charge	Field4 (<i>Total Shipment and Handling charge – this values is used to write to the SAGE 100 Freight field if ‘Write freight back to Invoice’ is turned on</i>)

PACKAGE

FedEx Field	SAGE 100 Field
Ground Invoice Number	Field1 (<i>This is the SAGE 100 Invoice number and is used to match FedEx records to the appropriate SAGE 100 shipments</i>)
P.O. Number	Field19 (<i>Reference field can be replaced by any other field, imports into the Package comment field in SAGE 100</i>)
Service Type	Field3 (<i>Ship Via/Service Type</i>)
Weight	Field18

RECIPIENT

FedEx Field	SAGE 100 Field
Address 1	Field7 (<i>updates the ShipToAddress1</i>)
Address 2	Field8 (<i>updates the ShipToAddress2</i>)
City	Field10 (<i>updates the ShipToCity</i>)
Company	Field5 (<i>updates the ShipToName</i>)
Contact Name	Field6 (<i>updates the ConfirmTo</i>)
Country	Field13 (<i>Does not update the ShipToCountryCode</i>)
Postal Code	Field12 (<i>updates the ShipToZipCode</i>)
State/Province	Field11 (<i>updates the ShipToState</i>)

SPECIAL SERVICES

FedEx Field	SAGE 100 Field
Ship Alert Recipient Delivery Notification	Field2 (<i>shipment Void Indicator – FedEx does not export the void indicator so we use this field to populate the value with a N</i>)
Ship Alert Recipient Shipment Notification	Field14 (<i>package Void Indicator – FedEx does not export the void indicator so we use this field to populate the value with a N</i>)

TRACKING NUMBER

FedEx Field	SAGE 100 Field
Tracking Number	Field15 (<i>writes the tracking number to the shipment</i>)

EXPORT CONVERSION: There are two fields we need to convert to meet the export requirements, this is a very important step failure to do so will result in tracking numbers not updating to SAGE 100.

Ship Alert Recipient Delivery Notification

- No/False = N
- Yes/True = N

Ship Alert Recipient Shipment Notification

- No/False = N
- Yes/True = N

FINISH: We are about finished with the integration, there are two more screens that will summarize what we have done and then ask us to 'Save' our settings.

SUMMARY: the summary screen will summarize what we have setup and give you an opportunity to change anything that has been setup, by clicking on the 'Edit' link for the appropriate section. If you are satisfied click on the 'Continue' button

INSTRUCTIONS: Please read this screen and when finished click on the 'SAVE' button at the bottom right-hand corner. After clicking on 'Save' click on the 'FINISH' button.

SAVE: Give your profile a name, you can type in anything that will make sense, if you are setting this up for multiple companies be sure to include the MAS90 company code that you set it up for.

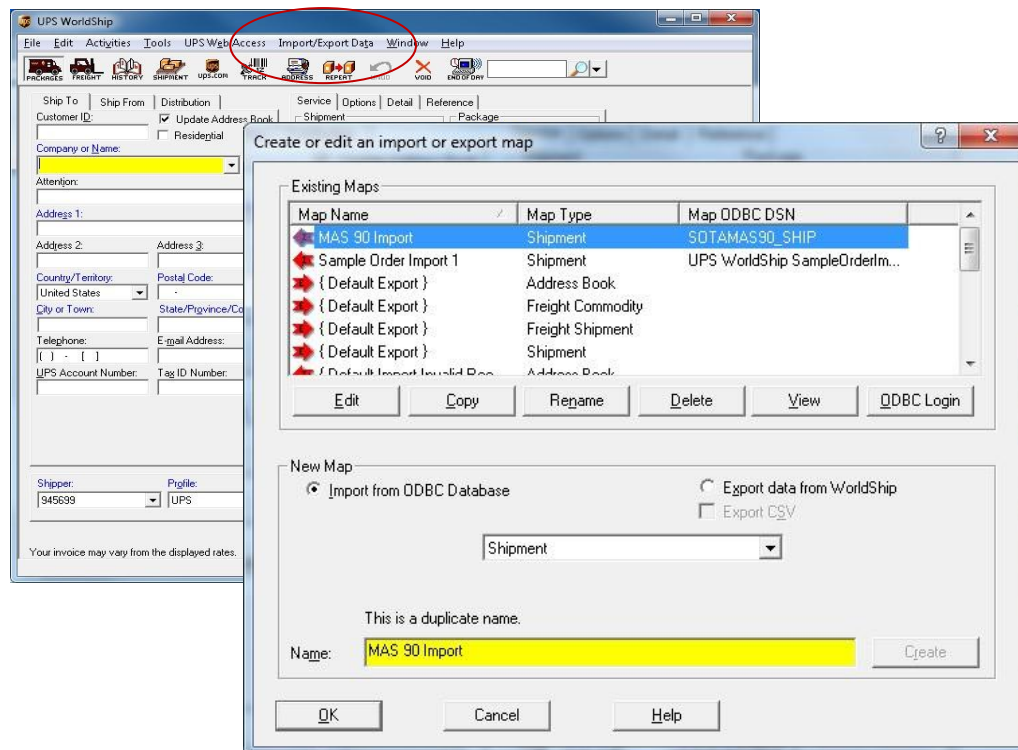
Export Definition from Fedex

Fedex Ship Manager FIELD	COLUMN
Shipment Info: Description of Goods\Reference 2	1
Shipment Info: Void Indicator	2
Shipment Info: Service Type	3
Shipment Info: Total Shipment and Handling Charges	4
Ship To: Company or Name	5
Ship To: Attention	6
Ship To: Street Address	7
Ship To: Room/Floor/Address2	8
Ship To: Department/Address3	9
Ship To: City	10
Ship To: State	11
Ship To: Postal/Zip Code	12
Ship To: Country	13
Package: Void Indicator	14
Package: Tracking Number	15
Package: Package Charge	16
Package: Package Type	17
Package: Weight	18
Package: Reference 1	19

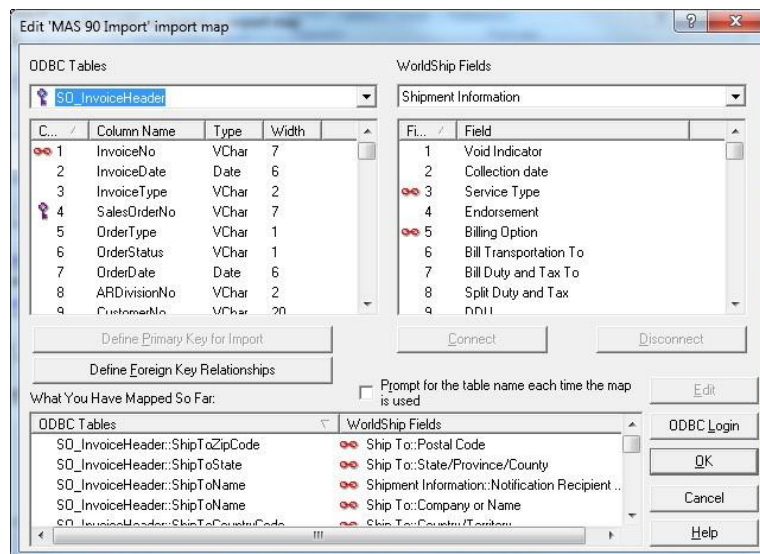
UPS WorldShip – Import/Export Setup

From the WorldShip Import/Export Data Menu, choose Create/Edit Map

On the lower portion of the window, in New Map, click the Import from ODBC Database, Select Shipment from the drop down, and enter a name for your Import Map. Click OK.

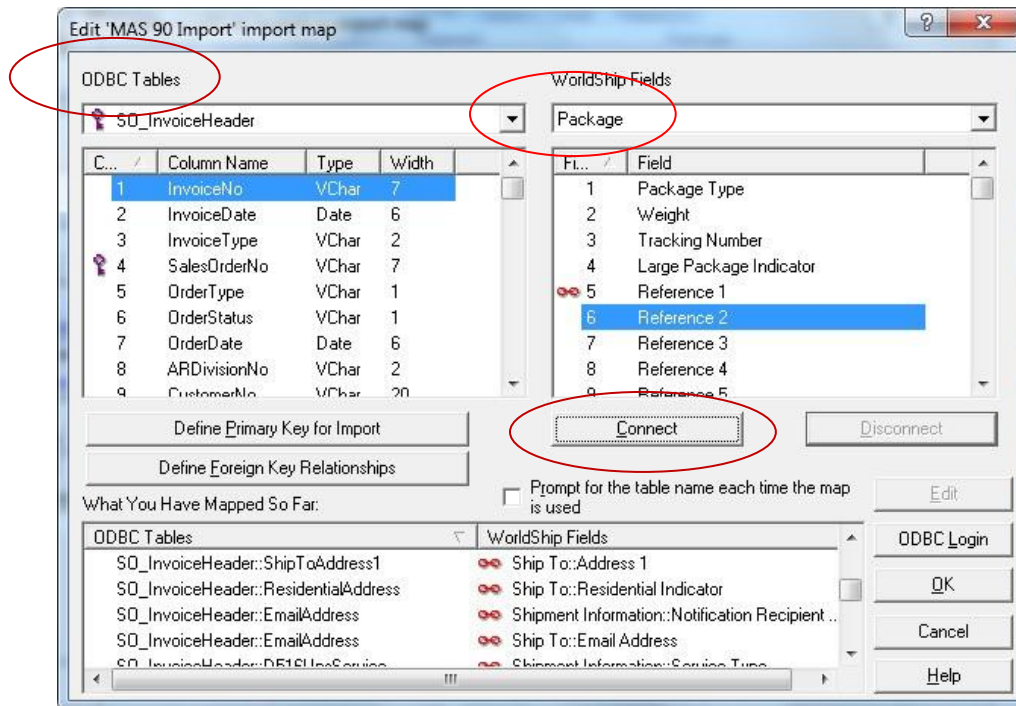


In the ODBC Tables column, select SO_InvoiceHeader



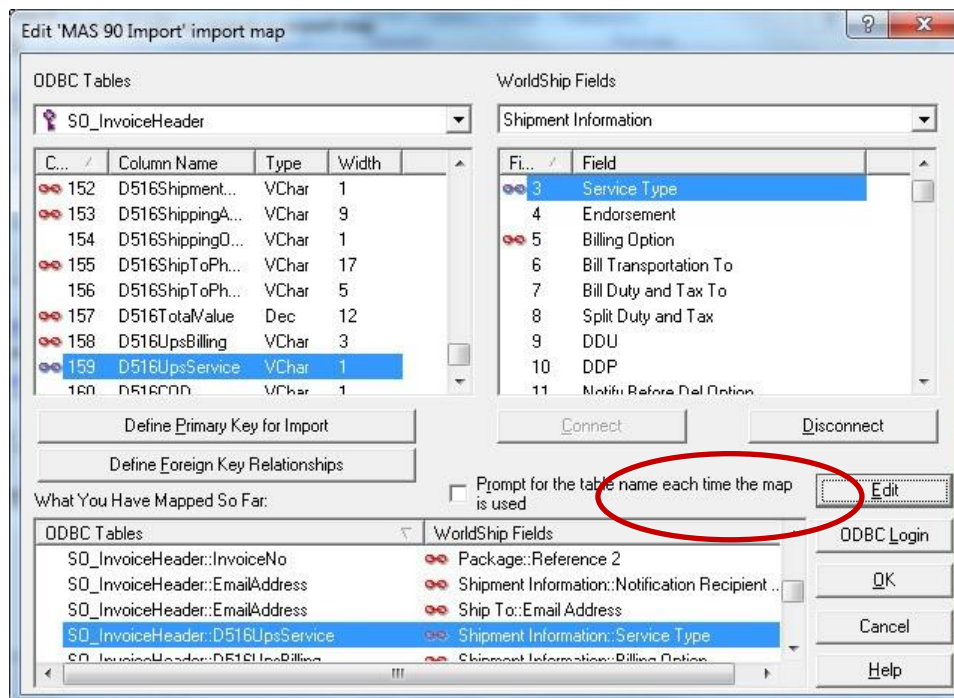
Map the SO_Invoice Header fields to the UPS fields as follows. The field numbers are listed for UPS WorldShip v15 (2012). The field numbers can change from version to version but typically the Table Name and Field Descriptions remain constant or at least similar enough to easily identify.

From the ODBC Table column, select field 1 from the SO_InvoiceHeader. Then select Package, Reference 2 from the WorldShip Package, Reference 2 field. Click the Connect button. Repeat this procedure for each MAS 90 field listed.



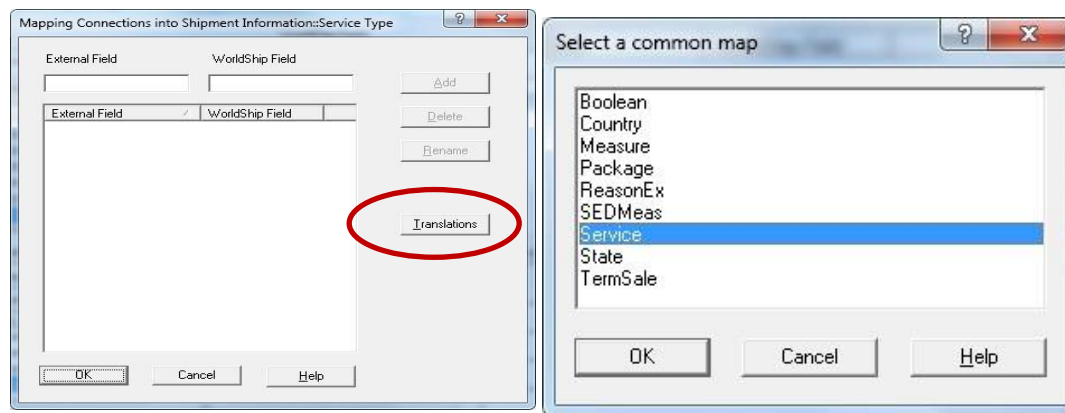
Sage Field*	SO_InvoiceHeader Table	UPS Field**	UPS ODBC Table	UPS Field Description
1	Invoice Number	6	Package	Reference 2
19	ShipToName	52	Shipment Information	Notification Recipient 1 Company or Name
19	ShipToName	2	Ship To	Company or Name
20	ShipToAddress1	5	Ship To	Address 1
21	ShipToAddress2	6	Ship To	Address 2
22	ShipToAddress3	7	Ship To	Address 3
23	ShipToCity	10	Ship To	City or Town
24	ShipToState	11	Ship To	State/Province/County
25	ShipToZipCode	9	Ship To	Postal Code
26	ShipToCountryCode	8	Ship To	Country/Territory
32	CustomerPONo	5	Package	Reference 1

35	ConfirmTo	53	Shipment Information	Notification Recipient 1 Contact Name
35	ConfirmTo	3	Ship To	Attention
44	ResidentialAddress	18	Ship To	Residential Indicator
71	EmailAddress	54	Shipment Information	Notification Recipient 1 Email
71	EmailAddress	14	Ship To	Email Address
151	D516SaturdayDelivery	38	Shipment Information	Saturday Delivery Option
152	D516ShipmentNotification	49	Shipment Information	QVN Ship Notification 1 Op5io
153	D516ShippingAccount	16	Ship To	Receiver UPS Account Number
155	D516ShipToPhone	12	Ship To	Telephone
157	D516TotalValue	13	Package	COD Amount
158	D516UpsBilling	5	Shipment Information	Billing Option
159	D516UpsService	3	Shipment Information	Service Type

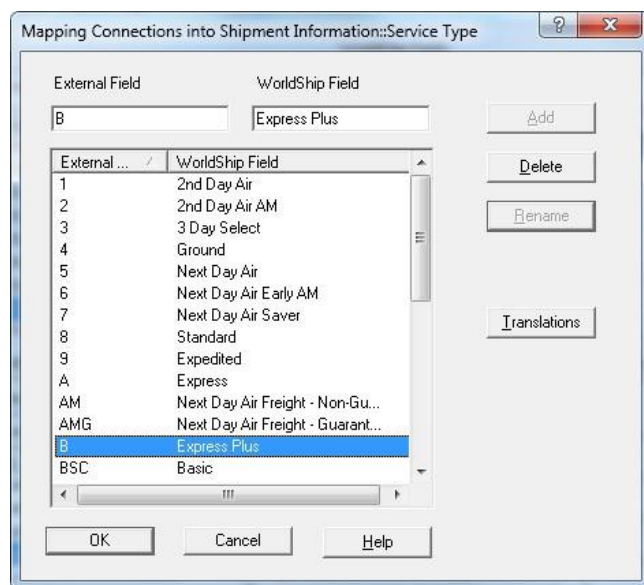


There are some additional steps required to ensure that the correct information is imported from Sage 100. Highlight the connection between SO_InvoiceHeader_D516UpsService field and Shipment Information: Service Type, click the Edit button.

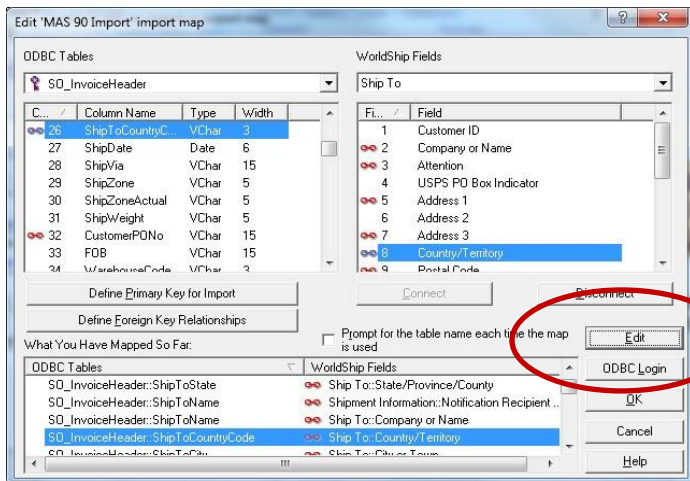
Click the Translations Button, and select Service.



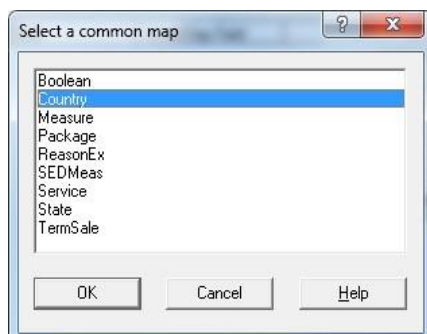
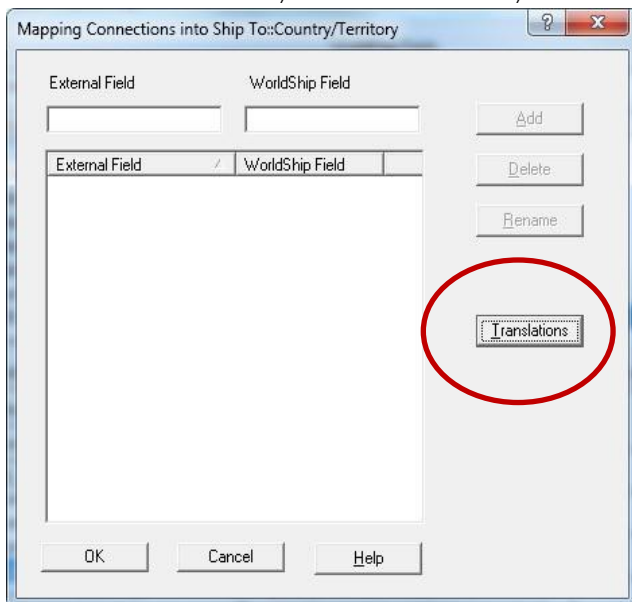
Select and rename the External Fields as listed below.



Highlight the SO_InvoiceHeader: ShipToCountryCode field linked to the WorldShip Ship to Country/Territory and click the Edit button.



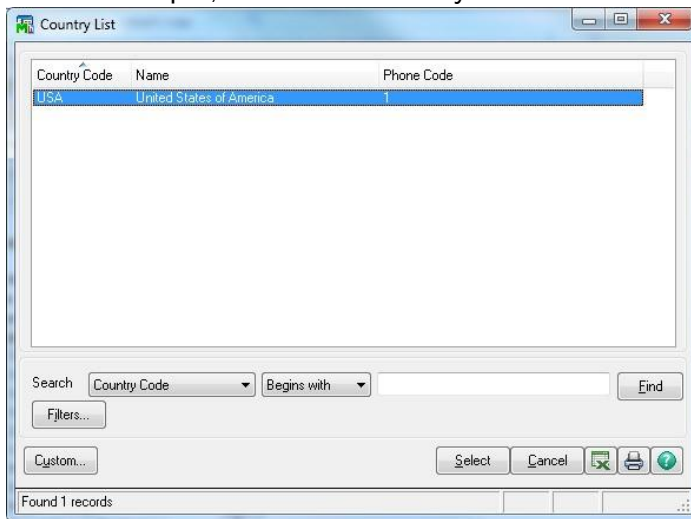
Click the Edit button, then Translation, then Select Country.



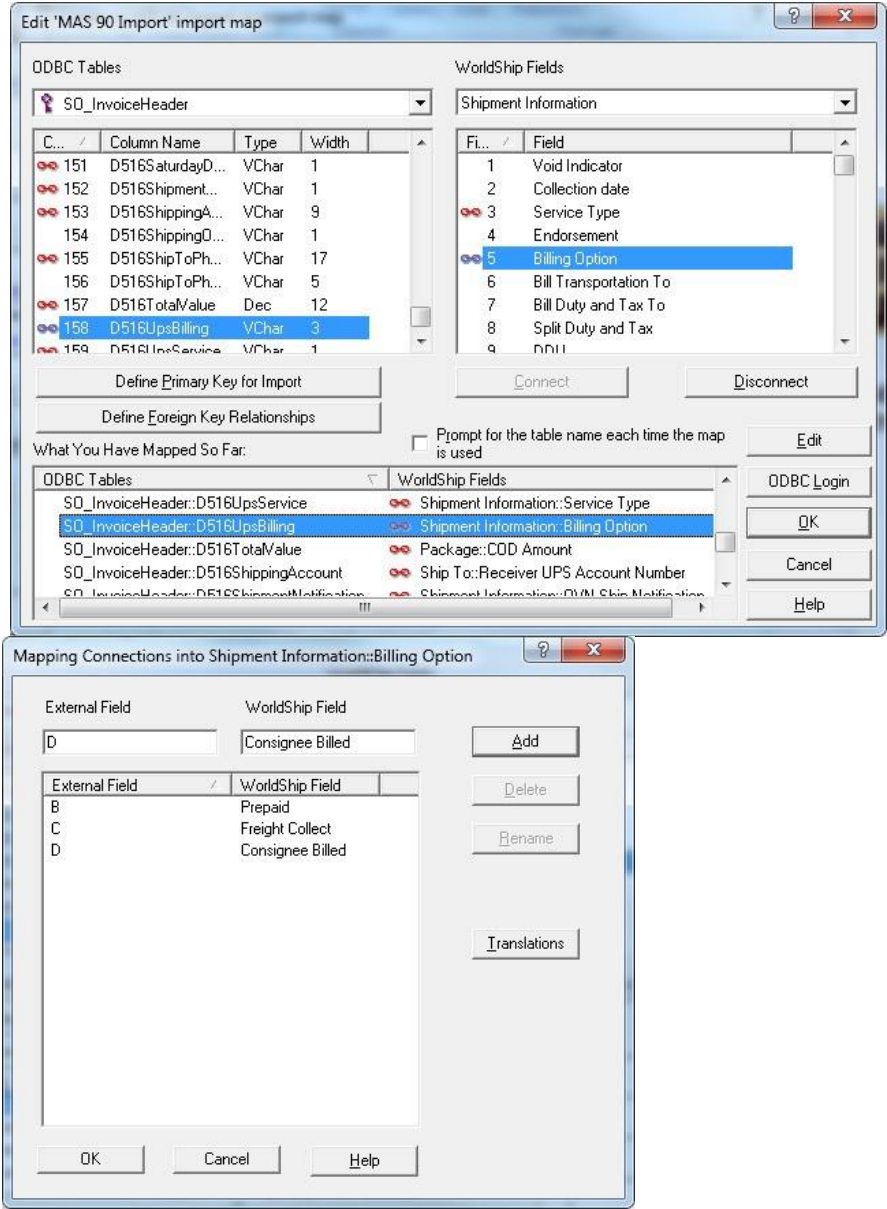
In the External Field of the window Mapping Connections into Ship To: Country/Territory, enter the Country Code from the MAS 90 Country Code Listing.



In this example, MAS 90's Country Code file lists United States as "USA."



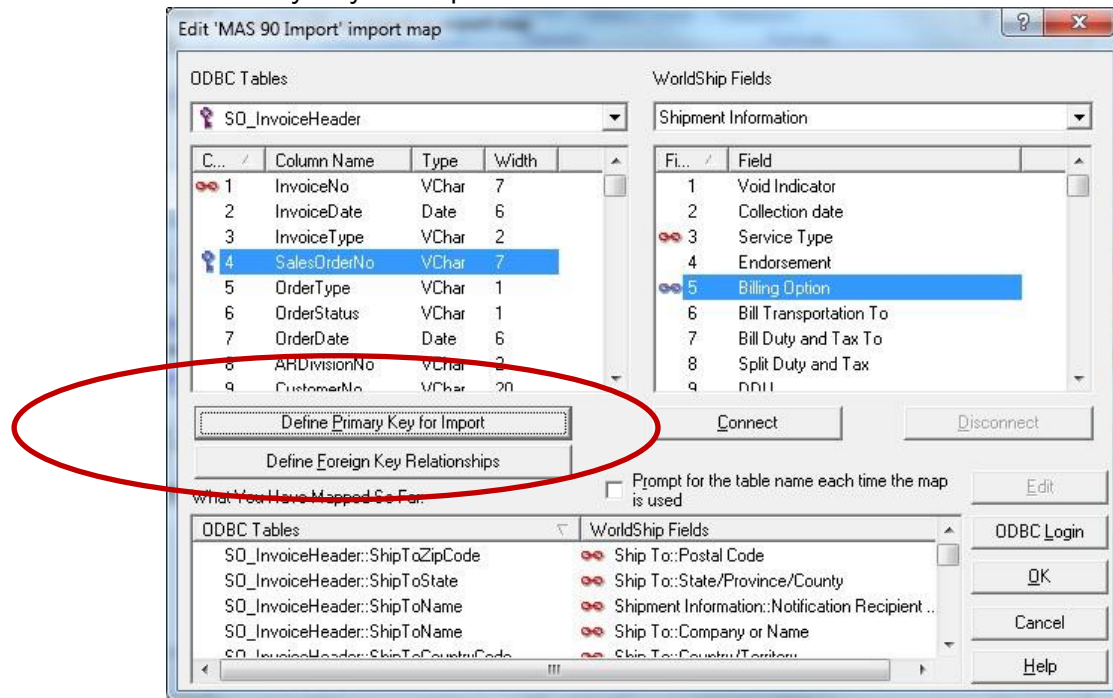
Highlight the SO_InvoiceHeader: D516UpsBilling field linked to the WorldShip Shipment Information: Billing Option, and click the Edit button.



There are no existing translations so it is necessary to create the list. In the External Field enter B, then in the WorldShip Field enter Prepaid then click the Add button. Repeat for C, Freight, and D, Consignee Billed.

Primary Key for Import

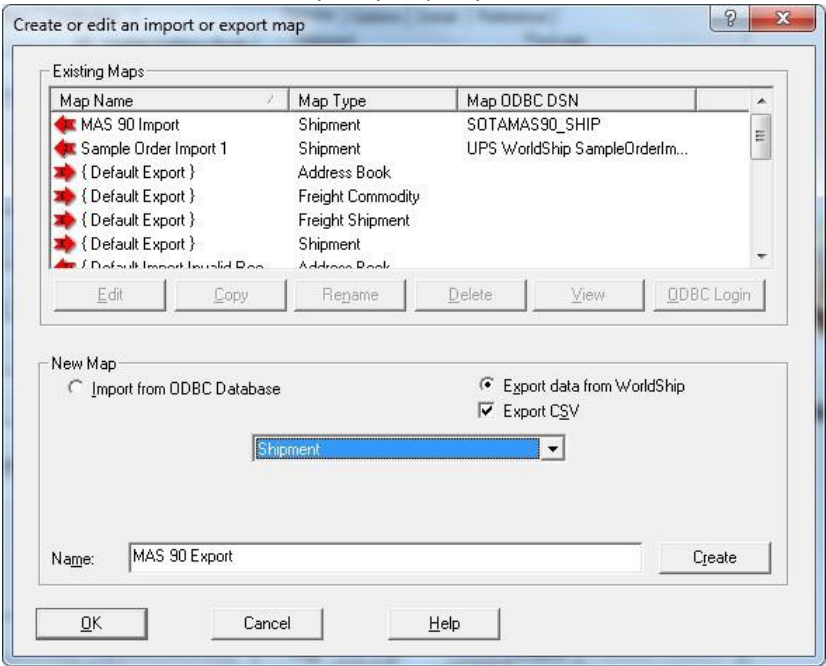
On the ODBC Tables side of the mapping window, highlight the SalesOrderNo field and click the button Define Primary Key for Import.



Click the OK button and close the Edit window.

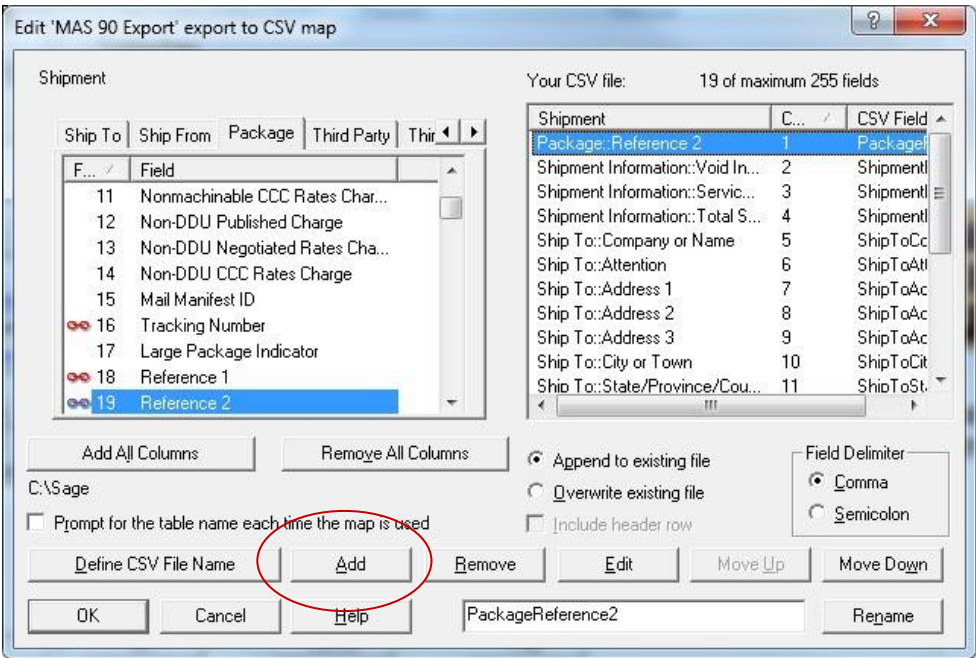
Export back to MAS 90

From the UPS WorldShip Import/Export Data Menu, select Create/Edit Map.



In the New Map section of the lower portion of the window, check the radio button Export data from WorldShip, and check the box Export CSV. Use the drop-down to select Shipment. In the Name field, enter MAS 90 Export and click the Create button.

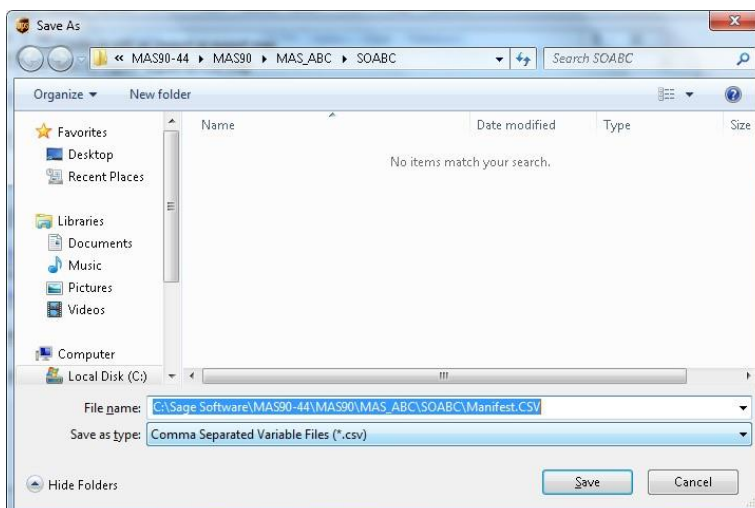
Use the table below to create the Export Map by selecting the UPS Tab and Field Identified.



For example, Select the Package Tab, then highlight Field 19, Reference 2 and click the Add button. Continue until you have selected all the fields listed below and they are entered in the order listed.

Field No.**	Field Name	Column
19	Package: Reference 2	1
1	Shipment Info: Void Indicator	2
2	Shipment Info: Service Type	3
205	Shipment Info: Total Shipment and Handling Published Charges	4
2	Ship To: Company Name	5
3	Ship To: Attention	6
5	Ship To: Address 1	7
6	Ship To: Address 2	8
7	Ship To: Address 3	9
10	Ship To: City	10
11	Ship To: State	11
9	Ship To: Postal Code	12
8	Ship To: Country	13
1	Package: Void Indicator	14
15	Package: Tracking Number	15
3	Package: Package Published Charge	16
4	Package: Package Type	17
5	Package: Weight	18
18	Package: Reference 1	19

Finally, click the button Define CSV File Name, and enter the path to the SOCCC (where CCC is the Company Code) Manifest.csv file to which the shipment data will be exported.



Shipper ID Maintenance

Go To 'Sales Order' – 'Setup' – 'Shipper ID Maintenance' and you will notice a new field called "Auto Print Shipping Documents". This check box, if enabled for a shipper ID, will automatically print the shipping documents upon the completion of a shipment to the users default printer.

Customer Maintenance

In 'Accounts Receivable' – 'Customer Maintenance'. Bring up a customer and go to the 'Ship To Address' maintenance. You will notice two new fields; set them appropriately for each customer.

- 'Saturday Delivery'
- 'Shipping Account No'

Shipping Rate Maintenance

Go to 'Sales Order' – 'Setup' – 'Shipping Rate Maintenance'. You will need to identify each Shipping Rate Code as either 'UPS' or 'FedEx' and identify the different shipping options you want to have. These options are changeable in Sales Order entry or Shipping Data Entry.

- **Handling Charges:** Choose *None* if no handling charges are to be added to the freight exported from the Shipping Software to Shipping Data Entry. Choose *Per Package* if handling charges for each package in the shipment are to be added to the freight exported from the Shipping Software to Shipping Data Entry. Choose *Flat Rate* if handling charges for each complete shipment will be added to the freight exported from the Shipping Software to Shipping Data Entry. Enter the amount of the handling charges for each package.
- **Shipping Type:** Choose the appropriate carrier for the Shipping Code. Choose *None* for all carriers other than UPS or FedEx.
- **FedEx / UPS Billing:** Select the Billing method
- **FedEx / UPS Service Type:** Select the Service type.
- **Add Freight to Invoice:** Enable this option if the freight amount calculated in the Shipping Software should be written to the Freight field in Shipping Data Entry. This is appropriate if the Shipping Code is for Billing Type Prepaid. Clear the check box if the freight amount calculated in UPS should not be exported from the shipping software to the Freight field in Shipping Data Entry. This is appropriate if the Shipping Code is for Billing Type Freight Collect or Consignee Billed.

Section D: System Operations

Sales Order Entry

Sales Order Entry contains the following new fields. The value for these fields will need to be set for any Sales Orders that existed before the MAS * Ship enhancement was installed.

- Shipping Account #
- C.O.D.
- Saturday Delivery
- Add Freight to Invoice
- E-Mail Shipment Notification: The e-mail will be sent based on the e-mail address on the 'Header' tab.

Sales Order Entry (ABC) 12/18/2017

Order Number: 0000171 | Copy From... | Defaults... | Customer... | Credit...

1. Header | 2. Address | 3. Lines | 4. Totals | 5. Credit Card | User: DefaultUser

Order Date: 5/1/2020 | Order Type: Standard Order | Tag Detail...

Customer No.: 01-ABF | American Business Futures | Salesperson: 0100

Amount Subject to Discount	81.48	Deposit Payment Type	NONE
Discount Rate	.000%	Check Number	
Discount Amount	.00	Deposit Amount	.00
Taxable Amount	.00	Commission Rate	10.000%
Non-Taxable Amount	81.48	Sales Tax Amount	.00
Ship Zone		Order Total	81.48
Ship Weight	00035	MAS*Ship Shipping Account #	
Freight Amount	.00	C.O.D.	<input type="checkbox"/>
		Saturday Delivery	<input type="checkbox"/>
		Add Freight to Invoice	<input checked="" type="checkbox"/>
		E-Mail Shipment Notification	<input type="checkbox"/>

Print Order... | Print Pick... | Recalc Price | Accept | Cancel | Delete | ?

Shipping Data Entry

The Shipping Data entry screen contains the following new fields. Note: these fields default from Sales Order Entry but can be changed during shipping data entry.

- Saturday Delivery
- E-Mail Shipment Notification

Shipping Data Entry (ABC) 12/18/2017

Shipper ID: 1 Ship Date: 12/18/2017 Order No.: 0000160
 Shipping No.: 0100061 Ship Status: Shipped SO Created By: ###
 Customer No.: 01-RSSUPPL R & S Supply Corp.

1. Lines 2. Shipping

Terms Code: 01 Net 30 Days
 Confirm To: Kent Quinlan
 E-mail Address:
 Comment:
 Warehouse: 001 EAST WAREHOUSE

FOB:
 Ship Via: UPS RED
 Ship Zone:
 Ship Weight: 00000 No. of Pkgs: 2
 Freight Amount: .00

Ship To Address
 Ship To:
 Residential Address: ☐
 Name: CROWN CORK & SEAL
 Address: 400 NORTH WALNUT
 PLANT #027
 ZIP Code: 47933- State: IN
 City: Crawfordsville
 Country: USA United States

Saturday Delivery: ☐
 E-Mail Shipment Notification: ☐

Update Header

Quick Print Auto Increment ☒ Accept Cancel Delete

Processing Shipments

Enter Shipping Data Entry per standard operating procedures. When finished, leave the entry screen OPEN (do not hit ACCEPT).

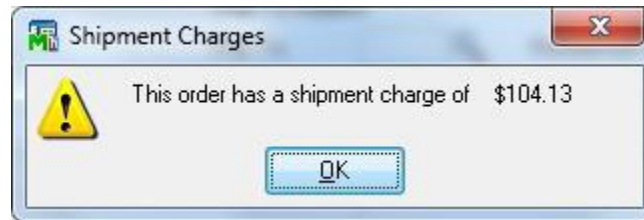
Open the Fedex Ship Manager or UPS Worldship Software and process the shipment.

If you are using Fedex Ship Manager, type in the Sales order number in the 'Customer Reference' field. Your shipment information should appear in FedEx. Complete the shipment in FedEx.

If you are using UPS Worldship, enter (or scan) the Sales Order number into the UPS Enter Import Key box. Process and Complete the shipment in UPS Worldship.

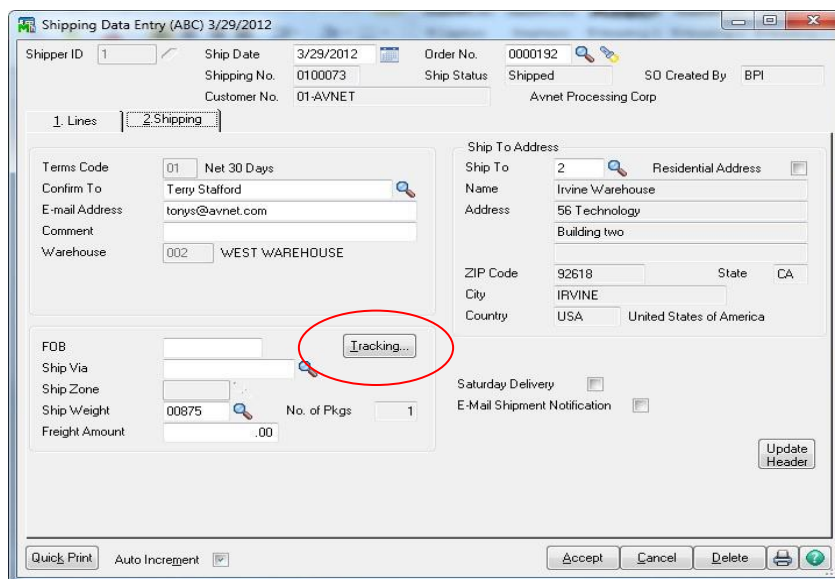
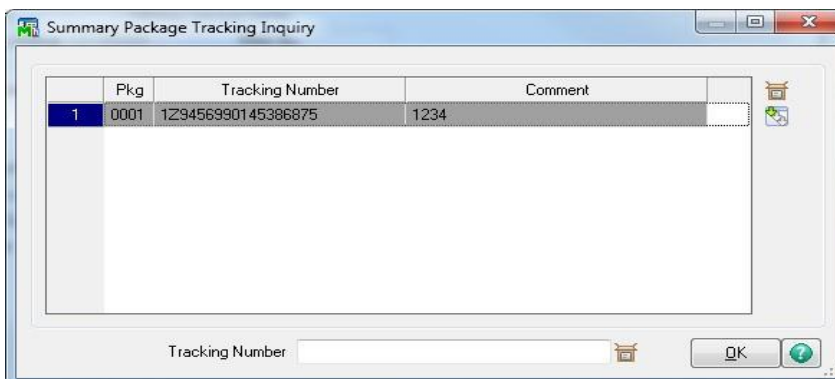
At this point the UPS / Fedex Export Map will send all the mapped fields to the Manifest.csv file identified during map creation.

Return to the Sales Order Shipping Data Entry screen and click the Accept button to import the data into Shipping Data Entry and close the shipping window for this order. You will receive a message:



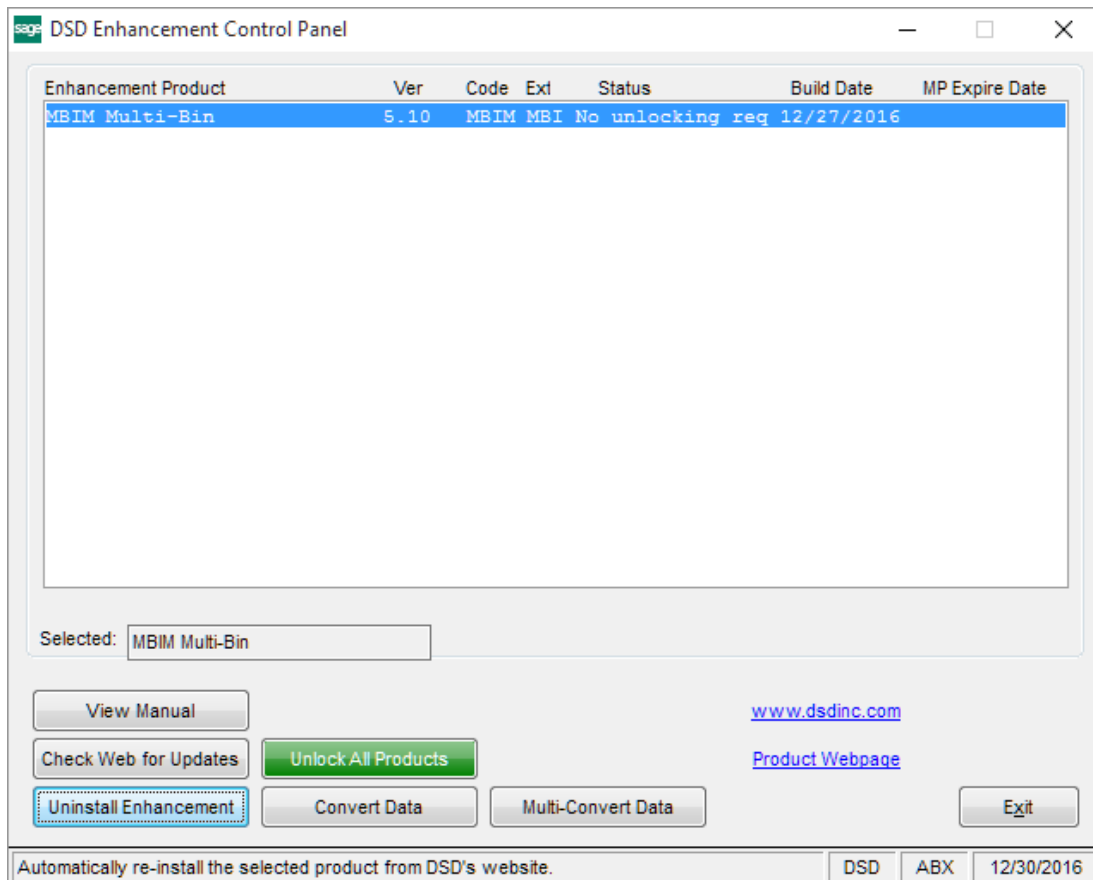
The Shipment Charge will be imported into the Freight field on the Totals Tab in Shipping Data Entry (if Shipping Rate Maintenance has the Add Freight to Invoice box checked).

In addition to the Shipment Charge, the Tracking Numbers are brought into Shipping Data Entry and can be viewed via the Tracking Button on the Shipping Tab.

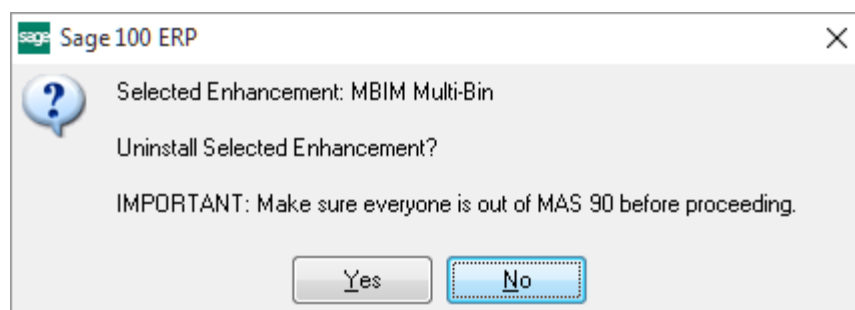
A screenshot of the "Shipping Data Entry (ABC) 3/29/2012" window. The window contains various fields for shipping information. A red circle highlights the "Tracking..." button located in the lower right area of the main form. Other visible fields include Shipper ID, Ship Date, Order No., Shipping No., Ship Status, Customer No., Terms Code, Confirm To, E-mail Address, Comment, Warehouse, FOB, Ship Via, Ship Zone, Ship Weight, Freight Amount, Ship To Address, Ship To, Name, Address, ZIP Code, City, Country, State, Saturday Delivery, and E-Mail Shipment Notification. At the bottom are buttons for Quick Print, Auto Increment, Accept, Cancel, Delete, and Update Header.A screenshot of the "Summary Package Tracking Inquiry" window. It displays a table with tracking information. The table has four columns: Pkg, Tracking Number, and Comment. The first row shows Pkg 1, Tracking Number 129456990145386875, and Comment 1234. Below the table is a search field labeled "Tracking Number" and buttons for OK and a help icon.

Section E: Uninstall DSD Enhancements

A DSD Enhancements Uninstall Utility has been provided for the purposes of removing DSD Enhancements from your Sage 100 System. This utility may be accessed from the **DSD Enhancement Control Panel** menu option on the **Library Master / Utilities** menu.



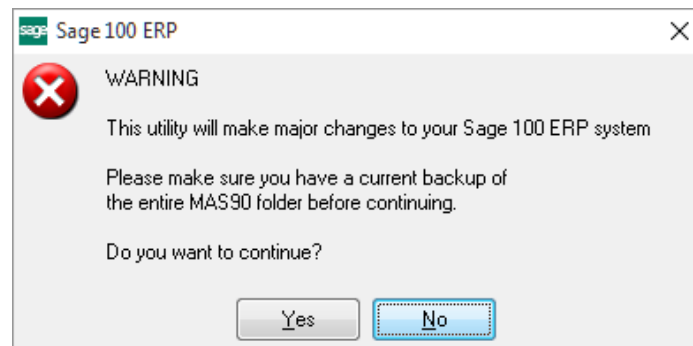
When accessing the **DSD Enhancement Control**, select the enhancement that you wish to Uninstall, and then select the **Uninstall Enhancement** button. The following message box will appear:



Select **No** to exit the Uninstall Process.

Select **Yes** to continue with the Uninstall Process.

The following message box will appear, to remind you that a complete backup of your entire Sage 100 system should be completed prior to uninstalling a DSD product.



Select **No** to exit the Uninstall Process.

Select **Yes** to continue with the Uninstall Process.

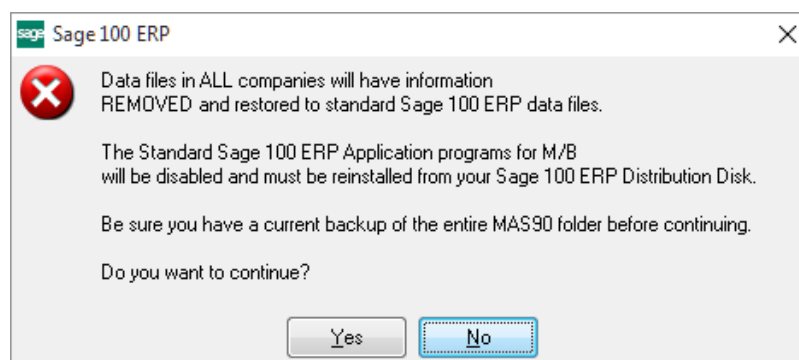
After the Uninstall of the DSD Enhancement, you MUST reinstall certain standard Sage 100 modules, followed by reinstallation of Product Updates and Hot Fixes, if applicable.

A message box will appear, and will display which of those specific Sage 100 modules you must reinstall afterwards.

Select **No** to exit the Uninstall Process.

Select **Yes** to continue with the Uninstall Process.

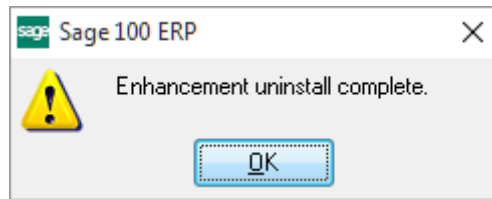
The following message box will appear, displaying the final warning message.



Select **No** to exit the Uninstall Process.

Select **Yes** to continue with the Uninstall Process. At this point, the DSD Enhancement will be removed from the Sage 100 system.

After completion of the Uninstall, the following message box will appear. Select OK to continue.



Now that the Uninstall process is completed, you must:

- Reinstall the applicable standard Sage 100 modules
- Reinstall the latest Sage 100 Service Pack/Updates, if applicable.
- Reinstall any other DSD Enhancements or Developer products that are affected from the reinstallation of the standard Sage 100 module(s).