



DSD Business Systems

Sage 100 Enhancements

SOAS

S/O Advanced Shipping Entry

Version 7.20



Information in this document is subject to change without notice.

Copyright 1993-2023, DSD Business Systems All rights reserved.

S/O Advanced Shipping Entry User's Manual
Version 7.20

26 October, 2023

DSD Business Systems
8787 Complex Drive
Suite 400
San Diego, CA 92123
858/550-5900 8:00am to 5:00pm PST
858/550-4900 Fax

Trademarks

ProvideX® is a Trademark of Sage Software.

Windows is a trademark of Microsoft Corporation.

Sage 100® is a registered trademark of Sage Software.

PXPlus® is a registered trademark of PVX Plus technologies

All other product names and brand names are service marks, and/or trademarks or registered trademarks of their respective companies.

This documentation and the software described herein, is prepared and published under license. Sage Software has not tested or verified either the software or any representation in this documentation regarding the software. Sage Software does not make any warranty with respect to either this documentation or the software described herein, and specifically disclaims any warranty, express or implied, with respect hereto, including the warranties of fitness for a particular purpose and merchantability.

Table of Contents

SECTION A: INTRODUCTION	4
WEB RESOURCES	4
SUPPORT	4
S/O ADVANCED SHIPPING ENTRY FEATURES	5
Auto Accumulate	5
Quick Print Packing List by Package	5
SECTION B: GETTING STARTED	6
REQUIRED LEVELS	6
INSTALLATION	6
DSD ENHANCEMENT CONTROL PANEL	8
SECTION C: SETUP	10
ADVANCED SHIPPING OPTIONS	10
SECTION D: SYSTEM OPERATIONS	11
SHIPPING DATA ENTRY	11
Auto Accumulate	11
Quick Print Packing List by Package	11
SECTION E: UNINSTALL DSD ENHANCEMENTS	13

Section A: Introduction

This manual contains a description and instructions for this DSD product. Operating instructions are included for the features added by this product to Sage 100. For instructions on using Sage 100, refer to the appropriate Sage 100 manual, or call your Sage 100 reseller. DSD Business Systems offers excellent Sage 100 support, at an hourly rate.

Web Resources

DSD web site: <http://www.dsdinc.com>

The Enhancement page contains:

- Current Release Schedule*
- Purchasing Information*
- Installation Instructions*
- Product Support*
- Enhancement Links*

SOAS S/O Advanced Shipping Entry:

<http://www.dsdinc.com/enhancement/sales-order-advanced-shipping-entry-4>

The product web page contains:

- Product Description*
- Web Links*
- Current Product Version Table*
- Product Installation File Download*
- Product Manual in .pdf Format*
- Revision History*
- FAQ*

Support

DSD provides product support through Sage 100 resellers. Support is provided for the current version. Older versions are supported at an hourly rate. DSD's telephone number is **858-550-5900**. Fax: **858-550-4900**.

For a hard error, where the program displays an error dialog, report:

- Error number.*
- Program name.*
- Line number.*
- Program version.*
- Exact sequence that caused the error, including menus and menu selections.*

Other pertinent information.

If leaving a message or faxing, please include:

Your name.

Your phone number (and fax if applicable) and extension.

It is possible to be unable to duplicate a problem, because of data corruption or because we have not exactly duplicated a particular operating environment. In such circumstances, we can only continue to try to fix the problem if we can either access the system with Symantec PCAnywhere or by some other means access or duplicate the system.

S/O Advanced Shipping Entry Features

Auto Accumulate

Standard SAGE 100 allows for (a) Auto Accumulate – the user may select this checkbox to allow a scan/entry of an Item Number, which triggers the increment of Quantity Shipped for that item by 1, and (b) Direct Entry of Qty Shipped – the user may uncheck the Auto Accumulate, and then select the item and manually enter the Quantity Shipped. Whatever is entered into the Quantity Shipped field will replace the previous Quantity Shipped entered.

The problem is that, when doing Direct Entry of Qty Shipped, the user may not want to replace the previous Quantity Shipped entered, but instead add to the previous Quantity Shipped entered. This problem usually occurs in a Shipping environment where many of the same item numbers are shipped, and they are boxed up in groups.

The solution that DSD's S/O Advanced Shipping Entry offers is **Auto Accumulate**. A new Auto Accumulate checkbox has been added to Shipping Data Entry, and when selected, any Qty Shipped entered will add to the previous Quantity Shipped entered.

Quick Print Packing List by Package

Standard SAGE 100 allows for printing of a Packing List (which prints items shipped on the entire order) and "Additional Packing Lists" (which prints a separate Packing List for each Package, only showing items in those packages).

The problem is that the user can only print the "Additional Packing Lists" after the entire shipment is processed in Shipping Data Entry. Since each Additional Packing List must go into each package, the packages cannot be closed, taped, and loaded onto the truck until the entire shipment is processed. This is detrimental to a company that uses an "assembly line" packaging & shipping process.

The solution that DSD's S/O Advanced Shipping Entry offers is **Quick Print Packing List by Package**. After the user assigns quantities to a package, and then selects the 'Next' Package Number, they are now prompted to print the Additional Packing List for the package they just completed. The user also has the ability to select a specific package and select a new "QP Package" button to print that the Additional Packing List.

Section B: Getting Started



- **If you reinstall or upgrade one of the Sage 100 modules listed in the following table, you must also reinstall this Enhancement.**
- Enhancements from different Sage Developers are generally not designed to work together. If installed together, problems are likely to occur.
- **Check with DSD before installing more than one Enhancement.**

Required Levels

Sage 100 Module	Module Required	Required Level
S/O	Y	7.20

Installation

1. **Back-up:** Exit all Sage 100 sessions. Back-up existing Sage 100 data.
2. **Check Levels:** Sage 100 module levels **must match** those listed above.
3. **Run Enhancement Setup Program:** Save the executable installation program (sent to you or downloaded from our website) in a convenient location on the Sage 100 server. Launch the program from Windows Explorer or by selecting Start/Run, and then browse for the file in the location you saved it. Follow on-screen instructions.
4. **Send your Sage Serial Number to your DSD Representative:** Send your Sage Serial Number to your DSD representative in order for us to send you back the encrypted keys to unlock your system. This serial number can be found in Library Master\Setup\System Configuration, Tab 3. Registration as Serial Number.
5. **Re-Start Sage 100:** Sage 100 will be updated.
6. **Unlock the Enhancement:** DSD Enhancements must be unlocked to run. When any part of the Enhancement is run for the first time, the **DSD Enhancement License Agreement and Activation** window will appear. Follow the steps shown on that window. *You can click the Help button for more detailed instructions.*

Note: On the next page is a screenshot of the DSD Enhancement License Agreement and Activation window.

After accepting the License Agreement, you can then select the type of unlocking that you'd prefer. The choices are File, Web, Demo and Manual Entry.

File Unlock: After receiving your encrypted serial number key file from DSD, and placing that file in the MAS90/SOA directory, selecting this option will unlock all products keys contained in the file. This means you can unlock all enhancements at once using this option.

Web Unlock: If the system that is running the DSD Enhancement *has web access* and you *have sent DSD your Sage Serial number*, you can unlock the Enhancement without assistance using Web Unlock. When this option is selected, the program will attempt to download encrypted serial number key file from DSD *and then proceed to unlock all enhancements contained in the file*.

- *The Sage 100 system that is being used must have web access for this option to be effective.*
- *You can send your Sage Serial Number to your DSD Enhancements sales representative.*

Demo Unlock: If a Demo mode is available for the Enhancement you're running, you will be able to Demo unlock the product without assistance from DSD for demo purposes.

- *Creating a Demo Unlock is a good way to temporarily unlock DSD Enhancements off-hours, if you do not have web or email access. Later, you can unlock the product fully, during business hours.*

Manual Entry Unlock: If you want to unlock a single enhancement using a single encrypted key, you can select this option and enter the 64 character key you receive from DSD by copy and paste.

Note: You can also unlock a DSD Enhancement through the **DSD Enhancement Control Panel** found on the Library Master Utilities Menu. Then, select the Enhancement with your mouse from the list of Enhancements and click the **Unlock Product** button on the right side of the window.

- Convert Data:** After unlocking, the DSD Conversion Wizard will appear. Follow on-screen instructions to complete data conversion. *You can exit the conversion program without converting data. The Enhancement will not proceed, however, until data is converted. If you enter an enhanced program and data has not been converted, the conversion program will run again.*

DSD Enhancement License Agreement and Activation

License Agreement

YOU MUST READ THIS AGREEMENT COMPLETELY AND AGREE BEFORE PROCEEDING. SCROLL THROUGH THIS AGREEMENT USING THE SLIDER CONTROL.

IMPORTANT: THIS SOFTWARE IS LICENSED BY DSD BUSINESS SYSTEMS, INC. TO CUSTOMERS FOR THEIR USE ONLY IN ACCORDANCE WITH THE TERMS SET FORTH IN THIS CUSTOMER LICENSE AGREEMENT. OPENING OR USING THIS PACKAGE CONSTITUTES ACCEPTANCE OF THESE TERMS. IF THE TERMS OF THIS LICENSE ARE NOT ACCEPTABLE, THE CUSTOMER MAY OBTAIN A FULL REFUND OF ANY MONEY PAID IF THIS UNUSED, UNOPENED PACKAGE IS RETURNED WITHIN TEN (10) DAYS TO THE DEALER FROM WHICH IT WAS ACQUIRED.

1 Agree to License Agreement
☒ Agree ☐ Disagree

2 Select Unlocking Type
☐ Web ☐ File
☐ Demo ☒ Manual Entry

3 Call DSD at 858-550-5900
 Have this information ready: End User Name: DSD Business Systems
 Serial Number: 0555188

4 Enter the following from DSD
 Activation Key:
 Click to Unlock:

Help Exit

DSD ABX 12/30/2016

DSD Conversion Wizard: Step One, Introduction

DSD
BUSINESS SYSTEMS

This company's data needs to be converted.
 This program will perform the conversion.

Cancel Next

DSD Enhancement Control Panel

Starting with version 3.61, all DSD Enhancement products include DSD's Enhancement Control Panel. The **DSD Enhancement Control Panel is accessed from the Library Master Utilities menu.**

The DSD Enhancement Control Panel is a simple to use yet powerful system to help maintain DSD Enhancements installed on a Sage 100 system. To use it, select an Enhancement product from the list on the window and then click the button, on the right side of the window, which corresponds with the desired task.

View Manual: This button will display the product manual for the selected Enhancement using Adobe Acrobat. For this to be possible, the PDF file for the corresponding manual must be in the "MAS90/PDF" folder in the Sage 100 system. If the file is not present, and the system has web access, the correct PDF file will be automatically downloaded from the DSD website, put into the "MAS90/PDF" folder and then displayed.

Check the Web for Updates: This button will check the DSD website to see what the current build is the selected Enhancement and alert the user if a later version is available. *This requires an internet connection on the Sage 100 system.*

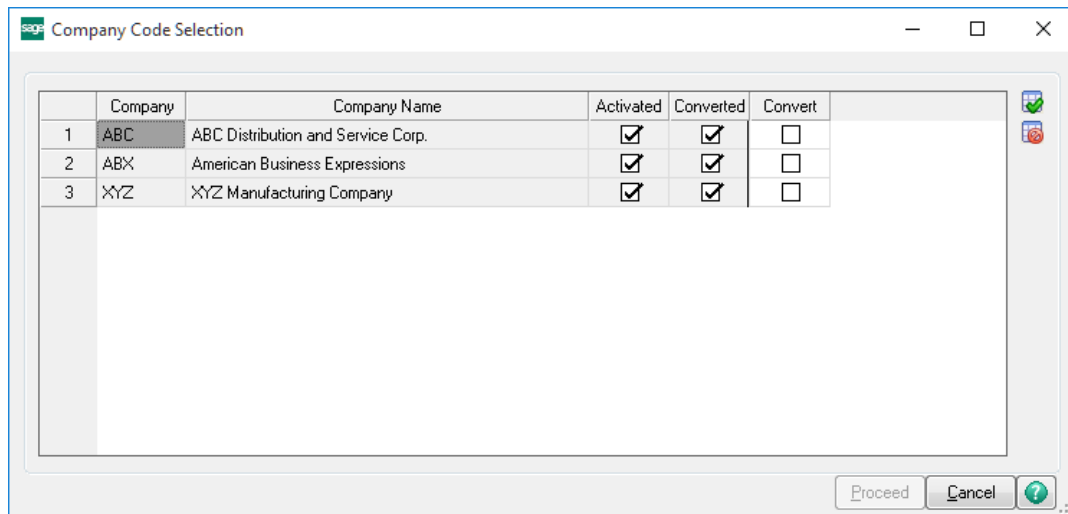
Unlock Product: This will cause the DSD Enhancement License Agreement and Activation window to appear. Using this window is described on the previous page. *This button is disabled if the selected Enhancement is already unlocked or if unlocking is not required.*

Unlock All Products: This will cause the DSD Enhancement All License Agreement and Activation window to appear. This window is similar to the one described on the previous page, but has only web and file as options to unlock. *This button is never disabled.*

Convert Data: After verification, the selected Enhancement's data conversion program will run. Data conversion is non-destructive, and may be triggered any number of times. Sometimes this is required to fix data records imported or updated from a non-enhancement installation.



Multi-Convert Data: Multiple Companies can be converted at the same time for a given Enhancement.
(If you have a large number of Companies to convert, please do in batches of 20 or fewer due to memory limitations.)



Help: The Help button, located at the bottom right of the window, opens an HTML help file.

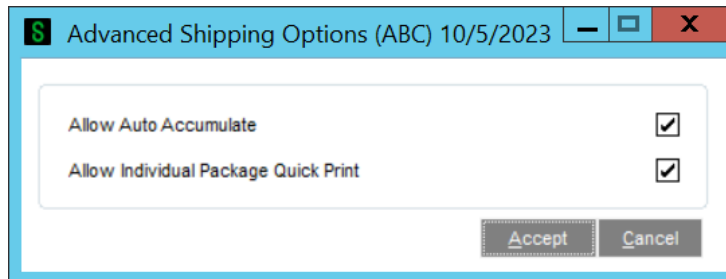
Get Adobe Acrobat: Opens the Adobe Acrobat website to the page where Acrobat can be downloaded and installed.

Uninstall Enhancement If this option is available, then selecting this button will start the un-install process, removing the enhancement from the system. (for more information see [Uninstall DSD Enhancements](#))

Section C: Setup

Advanced Shipping Options

A new item, Advanced Shipping Options, has been added to the Sales Order Setup menu. When this menu item is selected, the screen shown below is displayed.

A screenshot of a software dialog box titled "Advanced Shipping Options (ABC) 10/5/2023". The dialog box has a blue border and standard window controls (minimize, maximize, close) in the top right corner. Inside the dialog, there is a white rectangular area containing two options, each with a checkbox to its right. The first option is "Allow Auto Accumulate" with a checked checkbox. The second option is "Allow Individual Package Quick Print" with a checked checkbox. At the bottom right of the dialog, there are two buttons: "Accept" and "Cancel".

Allow Auto Accumulate: Select this to turn on the Auto Accumulate feature in Shipping Data Entry.

Allow Individual Package Quick Print: Select this to turn on the Individual Package Quick Print feature in Shipping Data Entry.

Section D: System Operations

Shipping Data Entry

Shipping Data Entry (ABC) 10/26/2023

Shipper ID: 1 Ship Date: 10/26/2023 Order No.: 0000180 Ship Status: New SO Created By: dsd

Shipping No.: 0100060 Customer No.: 01-INTMEX Int. Cust with Mexican Address Name expanded to 50

1. Lines 2. Shipping

Item Code	Ordered	Shipped	Back Ordered	Comment
1 8983	1.00	.00	.00	
2 8984	2.00	.00	.00	
3 GB-WF-1200-360	1.00	.00	.00	

Description: Warehouse: U/M: Package:

Quick Print... QP Package Auto Increment ☐ Auto Accumulate ☐ Accept Cancel Print

Auto Accumulate

If the **Allow Auto Accumulate** checkbox in **S/O Advanced Shipping Options** is checked, then the new **Auto Accumulate** checkbox will be displayed at the bottom of the Shipping Data Entry panel, to the right of the Auto Increment checkbox. This checkbox will default to unchecked, and will be disabled until the Auto Increment checkbox is unchecked.

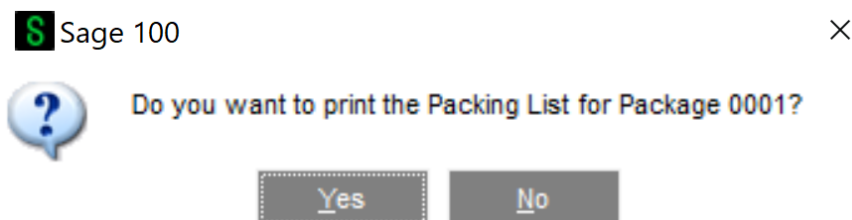
Once the Auto Accumulate checkbox is checked, any quantity entered into the Shipped column will add to the previous Shipped.

Uncheck the Auto Accumulate checkbox to replace a quantity in the Shipped column.

Quick Print Packing List by Package

If the **Allow Individual Package Quick Print** checkbox in **S/O Advanced Shipping Options** is checked, then the new **QP Package** button will be displayed at the bottom of the Shipping Data Entry panel, to the right of the Quick Print button.

After quantities are entered for a package, and the 'Next' Package Number is selected, the following prompt will be displayed:



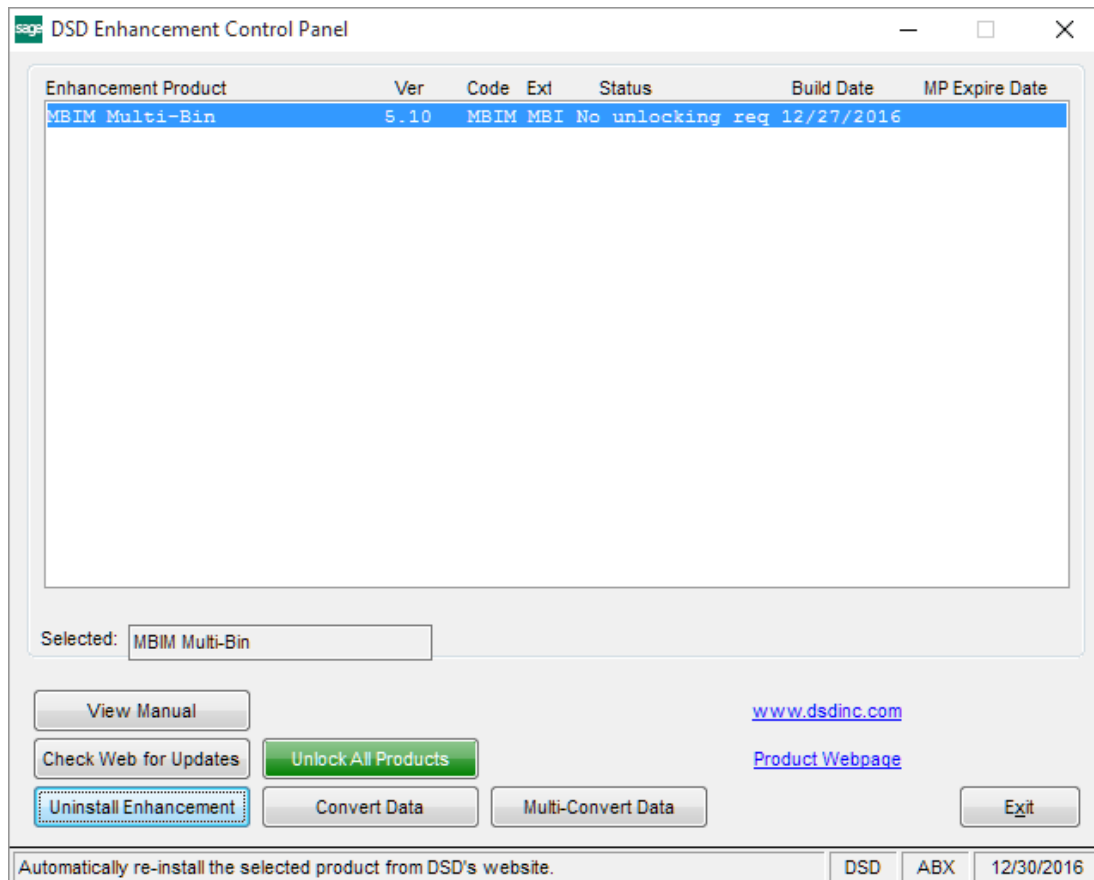
Select **Yes** to print the Additional Packing List for the package just completed.

Select **No** to skip the printing of the Additional Packing List for the package just completed.

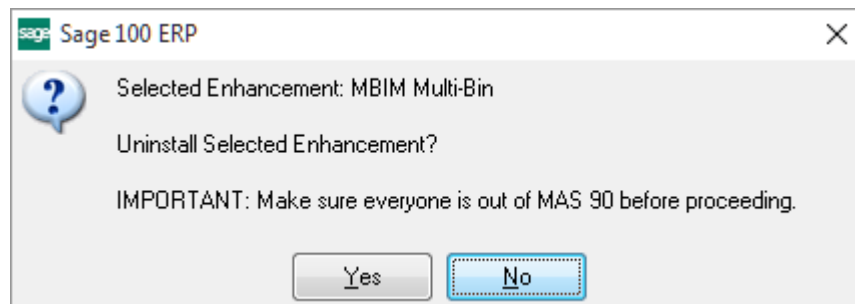
This same prompt will occur when the Package Number is changed manually, and **QP Package** button at the bottom of the Shipping Data Entry panel is selected.

Section E: Uninstall DSD Enhancements

A DSD Enhancements Uninstall Utility has been provided for the purposes of removing DSD Enhancements from your Sage 100 System. This utility may be accessed from the **DSD Enhancement Control Panel** menu option on the **Library Master / Utilities** menu.

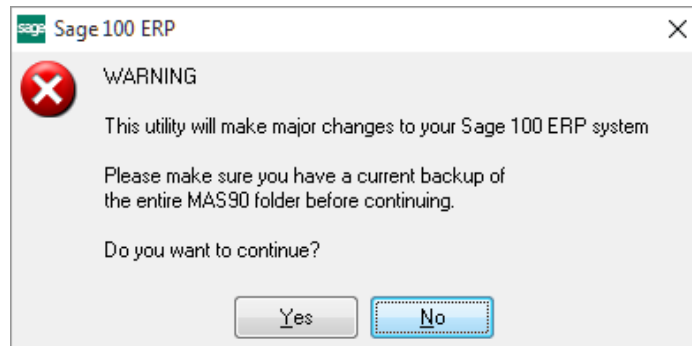


When accessing the **DSD Enhancement Control**, select the enhancement that you wish to Uninstall, and then select the **Uninstall Enhancement** button. The following message box will appear:



Select **No** to exit the Uninstall Process.
Select **Yes** to continue with the Uninstall Process.

The following message box will appear, to remind you that a complete backup of your entire Sage 100 system should be completed prior to uninstalling a DSD product.



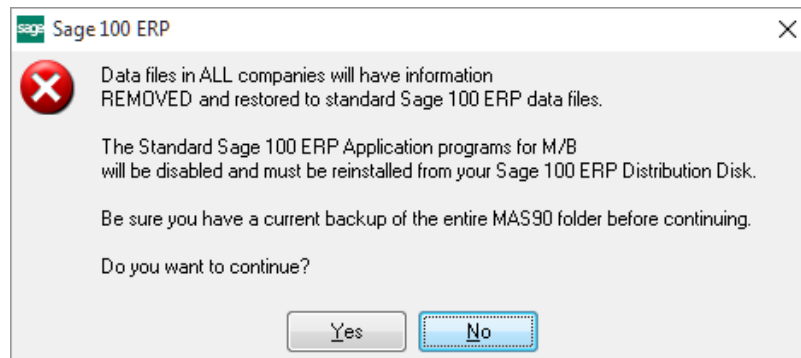
Select **No** to exit the Uninstall Process.
Select **Yes** to continue with the Uninstall Process.

After the Uninstall of the DSD Enhancement, you MUST reinstall certain standard Sage 100 modules, followed by reinstallation of Product Updates and Hot Fixes, if applicable.

A message box will appear, and will display which of those specific Sage 100 modules you must reinstall afterwards.

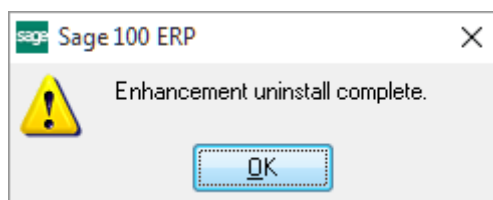
Select **No** to exit the Uninstall Process.
Select **Yes** to continue with the Uninstall Process.

The following message box will appear, displaying the final warning message.



Select **No** to exit the Uninstall Process.
Select **Yes** to continue with the Uninstall Process. At this point, the DSD Enhancement will be removed from the Sage 100 system.

After completion of the Uninstall, the following message box will appear. Select OK to continue.



Now that the Uninstall process is completed, you must:

- Reinstall the applicable standard Sage 100 modules
- Reinstall the latest Sage 100 Service Pack/Updates, if applicable.
- Reinstall any other DSD Enhancements or Developer products that are affected from the reinstallation of the standard Sage 100 module(s).