



DSD Business Systems

Sage 100 Enhancements

S242

Sales Journal Update to Create I/M Transfers

SO-1242

Version 7.20



Information in this document is subject to change without notice.

Copyright 1993-2023, DSD Business Systems All rights reserved.

Sales Journal Update to Create I/M Transfers User's Manual
Version 7.20

27 August, 2023

DSD Business Systems
8787 Complex Drive
Suite 400
San Diego, CA 92123
858/550-5900 8:00am to 5:00pm PST
858/550-4900 Fax

Trademarks

ProvideX® is a Trademark of Sage Software.

Windows is a trademark of Microsoft Corporation.

Sage 100® is a registered trademark of Sage Software.

PXPlus® is a registered trademark of PVX Plus technologies

All other product names and brand names are service marks, and/or trademarks or registered trademarks of their respective companies.

This documentation and the software described herein, is prepared and published under license. Sage Software has not tested or verified either the software or any representation in this documentation regarding the software. Sage Software does not make any warranty with respect to either this documentation or the software described herein, and specifically disclaims any warranty, express or implied, with respect hereto, including the warranties of fitness for a particular purpose and merchantability.

Table of Contents

SECTION A: INTRODUCTION **4**

 WEB RESOURCES4

 SUPPORT.....4

 SALES JOURNAL UPDATE TO CREATE I/M TRANSFERS FEATURES5

SECTION B: GETTING STARTED **6**

 REQUIRED LEVELS6

 INSTALLATION6

 DSD ENHANCEMENT CONTROL PANEL8

SECTION C: SETUP **10**

SECTION D: SYSTEM OPERATIONS **12**

 SALES JOURNAL UPDATE 12

 I/M TRANSACTION TRANSFERS..... 12

SECTION E: UNINSTALL DSD ENHANCEMENTS **14**

Section A: Introduction

This manual contains a description and instructions for this DSD product. Operating instructions are included for the features added by this product to Sage 100. For instructions on using Sage 100, refer to the appropriate Sage 100 manual, or call your Sage 100 reseller. DSD Business Systems offers excellent Sage 100 support, at an hourly rate.

Web Resources

DSD web site: <http://www.dsdinc.com>

The Enhancement page contains:

- Current Release Schedule*
- Purchasing Information*
- Installation Instructions*
- Product Support*
- Enhancement Links*

S242 Sales Journal Update to Create I/M Transfers:

<http://www.dsdinc.com/enhancement/sales-journal-update-to-create-im-transfers-2/>

The product web page contains:

- Product Description*
- Web Links*
- Current Product Version Table*
- Product Installation File Download*
- Product Manual in .pdf Format*
- Revision History*
- FAQ*

Support

DSD provides product support through Sage 100 resellers. Support is provided for the current version. Older versions are supported at an hourly rate. DSD's telephone number is **858-550-5900**. Fax: **858-550-4900**.

For a hard error, where the program displays an error dialog, report:

- Error number.*
- Program name.*
- Line number.*
- Program version.*
- Exact sequence that caused the error, including menus and menu selections.*

Other pertinent information.

If leaving a message or faxing, please include:

Your name.

Your phone number (and fax if applicable) and extension.

It is possible to be unable to duplicate a problem, because of data corruption or because we have not exactly duplicated a particular operating environment. In such circumstances, we can only continue to try to fix the problem if we can either access the system with Symantec PCAnywhere or by some other means access or duplicate the system.

Sales Journal Update to Create I/M Transfers Features

This DSD Extended Solution creates Inventory Transaction warehouse Transfers for S/O Invoices that either reference particular A/R Divisions or contain Customers who have been selected for this processing via a Custom Office UDF. These transfers will move quantities from the Invoice line warehouse to the header warehouse.

The Custom Office module is required if using the 'Customer' method.

Section B: Getting Started



- **If you reinstall or upgrade one of the Sage 100 modules listed in the following table, you must also reinstall this Enhancement.**
- Enhancements from different Sage Developers are generally not designed to work together. If installed together, problems are likely to occur.
- **Check with DSD before installing more than one Enhancement.**

Required Levels

Sage 100 Module	Module Required	Required Level
S/O	Y	7.20
I/M	Y	7.20

Installation

1. **Back-up:** Exit all Sage 100 sessions. Back-up existing Sage 100 data.
2. **Check Levels:** Sage 100 module levels **must match** those listed above.
3. **Run Enhancement Setup Program:** Save the executable installation program (sent to you or downloaded from our website) in a convenient location on the Sage 100 server. Launch the program from Windows Explorer or by selecting Start/Run, and then browse for the file in the location you saved it. Follow on-screen instructions.
4. **Send your Sage Serial Number to your DSD Representative:** Send your Sage Serial Number to your DSD representative in order for us to send you back the encrypted keys to unlock your system. This serial number can be found in Library Master\Setup\System Configuration, Tab 3. Registration as Serial Number.
5. **Re-Start Sage 100:** Sage 100 will be updated.
6. **Unlock the Enhancement:** DSD Enhancements must be unlocked to run. When any part of the Enhancement is run for the first time, the **DSD Enhancement License Agreement and Activation** window will appear. Follow the steps shown on that window. *You can click the Help button for more detailed instructions.*

Note: On the next page is a screenshot of the DSD Enhancement License Agreement and Activation window.

After accepting the License Agreement, you can then select the type of unlocking that you'd prefer. The choices are File, Web, Demo and Manual Entry.

File Unlock: After receiving your encrypted serial number key file from DSD, and placing that file in the MAS90/SOA directory, selecting this option will unlock all products keys contained in the file. This means you can unlock all enhancements at once using this option.

Web Unlock: If the system that is running the DSD Enhancement *has web access* and you *have sent DSD your Sage Serial number*, you can unlock the Enhancement without assistance using Web

Unlock. When this option is selected, the program will attempt to download encrypted serial number key file from DSD and then proceed to unlock all enhancements contained in the file.

- The Sage 100 system that is being used must have web access for this option to be effective.
- You can send your Sage Serial Number to your DSD Enhancements sales representative.

Demo Unlock: If a Demo mode is available for the Enhancement you're running, you will be able to Demo unlock the product without assistance from DSD for demo purposes.

- Creating a Demo Unlock is a good way to temporarily unlock DSD Enhancements off-hours, if you do not have web or email access. Later, you can unlock the product fully, during business hours.

Manual Entry Unlock: If you want to unlock a single enhancement using a single encrypted key, you can select this option and enter the 64 character key you receive from DSD by copy and paste.

Note: You can also unlock a DSD Enhancement through the **DSD Enhancement Control Panel** found on the Library Master Utilities Menu. Then, select the Enhancement with your mouse from the list of Enhancements and click the **Unlock Product** button on the right side of the window.

7. **Convert Data:** After unlocking, the DSD Conversion Wizard will appear. Follow on-screen instructions to complete data conversion. You can exit the conversion program without converting data. The Enhancement will not proceed, however, until data is converted. If you enter an enhanced program and data has not been converted, the conversion program will run again.

DSD Enhancement License Agreement and Activation

License Agreement

YOU MUST READ THIS AGREEMENT COMPLETELY AND AGREE BEFORE PROCEEDING. SCROLL THROUGH THIS AGREEMENT USING THE SLIDER CONTROL.

IMPORTANT: THIS SOFTWARE IS LICENSED BY DSD BUSINESS SYSTEMS, INC. TO CUSTOMERS FOR THEIR USE ONLY IN ACCORDANCE WITH THE TERMS SET FORTH IN THIS CUSTOMER LICENSE AGREEMENT. OPENING OR USING THIS PACKAGE CONSTITUTES ACCEPTANCE OF THESE TERMS. IF THE TERMS OF THIS LICENSE ARE NOT ACCEPTABLE, THE CUSTOMER MAY OBTAIN A FULL REFUND OF ANY MONEY PAID IF THIS UNUSED, UNOPENED PACKAGE IS RETURNED WITHIN TEN (10) DAYS TO THE DEALER FROM WHICH IT WAS ACQUIRED.

1 Agree to License Agreement
☒ Agree ☐ Disagree

2 Select Unlocking Type
☐ Web ☐ File
☐ Demo ☒ Manual Entry

3 Call DSD at 858-550-5900
 Have this information ready: End User Name
 Serial Number

4 Enter the following from DSD
 Activation Key:
 Click to Unlock:

DSD ABX 12/30/2016

DSD Conversion Wizard: Step One, Introduction

DSD BUSINESS SYSTEMS

This company's data needs to be converted.
 This program will perform the conversion.

DSD Enhancement Control Panel

Starting with version 3.61, all DSD Enhancement products include DSD's Enhancement Control Panel. The **DSD Enhancement Control Panel is accessed from the Library Master Utilities menu.**

The DSD Enhancement Control Panel is a simple to use yet powerful system to help maintain DSD Enhancements installed on a Sage 100 system. To use it, select an Enhancement product from the list on the window and then click the button, on the right side of the window, which corresponds with the desired task.

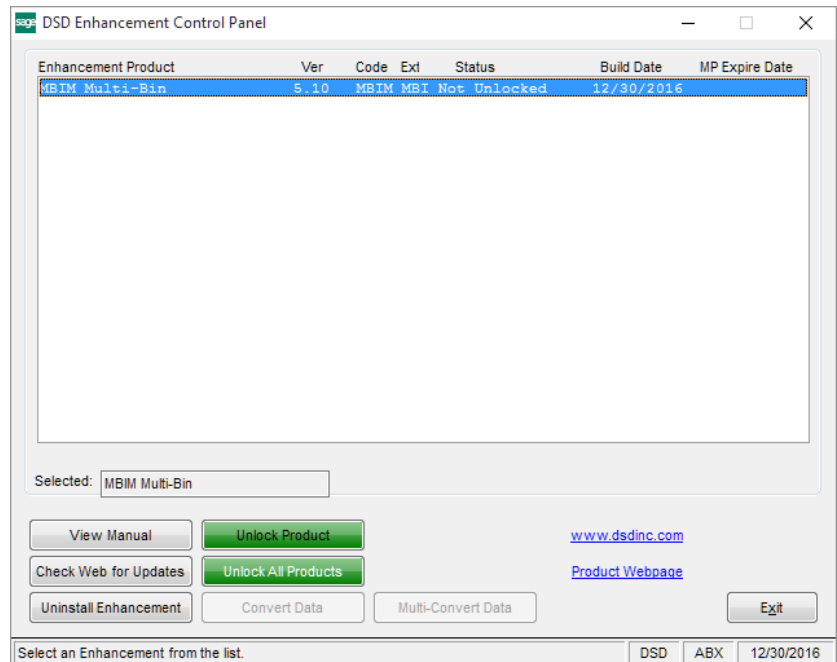
View Manual: This button will display the product manual for the selected Enhancement using Adobe Acrobat. For this to be possible, the PDF file for the corresponding manual must be in the "MAS90/PDF" folder in the Sage 100 system. If the file is not present, and the system has web access, the correct PDF file will be automatically downloaded from the DSD website, put into the "MAS90/PDF" folder and then displayed.

Check the Web for Updates: This button will check the DSD website to see what the current build is the selected Enhancement and alert the user if a later version is available. *This requires an internet connection on the Sage 100 system.*

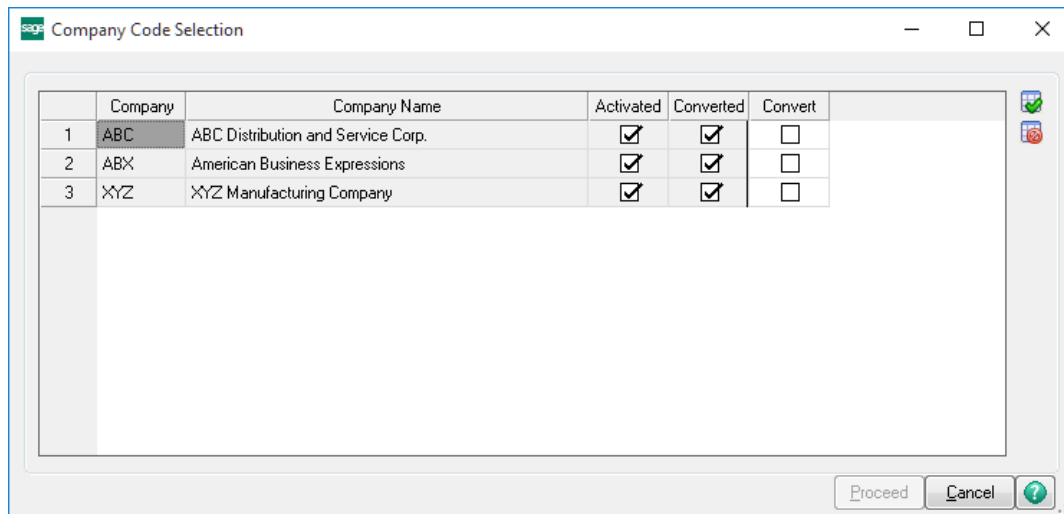
Unlock Product: This will cause the DSD Enhancement License Agreement and Activation window to appear. Using this window is described on the previous page. *This button is disabled if the selected Enhancement is already unlocked or if unlocking is not required.*

Unlock All Products: This will cause the DSD Enhancement All License Agreement and Activation window to appear. This window is similar to the one described on the previous page, but has only web and file as options to unlock. *This button is never disabled.*

Convert Data: After verification, the selected Enhancement's data conversion program will run. Data conversion is non-destructive, and may be triggered any number of times. Sometimes this is required to fix data records imported or updated from a non-enhancement installation.



Multi-Convert Data: Multiple Companies can be converted at the same time for a given Enhancement. *(If you have a large number of Companies to convert, please do in batches of 20 or fewer due to memory limitations.)*



Help: The Help button, located at the bottom right of the window, opens an HTML help file.

Get Adobe Acrobat: Opens the Adobe Acrobat website to the page where Acrobat can be downloaded and installed.

Uninstall Enhancement If this option is available, then selecting this button will start the un-install process, removing the enhancement from the system. (for more information see [Uninstall DSD Enhancements](#))

Section C: Setup

Upon completion of software installation, you will need to access the DSD Extended Solutions Setup from the Sales Order Setup menu. Select this part number and the Setup screen for this Extended Solution will appear. Check the 'Enable DSD Extended Solution' box to activate this Extended Solution.

SO-1242 Setup Options

SO-1242 SJ Updte/Create IM Tfr

☒ **Enable DSD Extended Solution** Level 7.20

Method: Customer

Custom Office UDF

A/R Customer C/M UDF: SO1242

Update A/R Invoice History: ☒

Customer UDF for Update History: UPDATEAR

IM Transfer Creation Divisions

Division Number	01	EAST SALES OFFICE
Division Number		
Division Number		
Division Number		
Division Number		

Accept Cancel

Check this box to enable SO-1242 SJ Updte/Create IM Tfr DSD ABC 8/15/2023

Answer the following prompts:

Method: Select 'Division' or 'Customer'

Customer Method options:

A/R Customer C/M UDF: Enter an A/R Customer 'check box' type Custom Office UDF which denotes that this customer is subject to warehouse transfer processing. In addition, if an S/O Invoice Header UDF is also setup using the same name as the A/R Customer UDF, its value will be used instead. (It is suggested to map this UDF value to the Customer UDF value via the Data Sources tab of UDF Maintenance.)

Update A/R Invoice History: If this option is checked, invoices will be updated to A/R Invoice History.

Customer UDF for Update History: Enter an A/R Customer 'check box' type Custom Office UDF which denotes which Customers will be have their Invoices updated normally per Standard Sage100 in addition to being subject to the I/M Transaction warehouse transfer processing.

- i. Table name: AR_Customer, SO_InvoiceHeader
 - 1. Field Name: UDF_UpdateARHistory, Checkbox
- ii. Data Source Mapping:
 - 1. AR_Customer > SO_InvoiceHeader

Division Method option:

I/M Transfer Creation Divisions: Specify up to five A/R Divisions. All invoices for Customers that reference a Division entered at these prompts will perform warehouse transfers.

You should visit this Setup screen after each upgrade or reinstallation of this Extended Solution.

Section D: System Operations

Sales Journal Update

If you selected 'Division,' all Invoices that reference a Division Code entered in Setup will perform warehouse transfers. If you selected 'Customer,' only Invoices for Customers whose specified Custom Office UDF is checked will perform transfers.

All inventory item lines on invoices that have a warehouse different from the invoice header warehouse will be used to populate the I/M Transaction Entry file for a Transfer type transaction. It will use the invoice header warehouse as the 'To' warehouse and the line warehouse as the 'From' warehouse. A Transaction Transfer record will be created as a new warehouse is encountered on the sales order lines (it does not consolidate by like warehouse). The quantities for these items will be equal to the quantity shipped. If an 'exploded' kit is encountered on the invoice, only the components will be added to the Transfer Entry, the Kit Item will be ignored. An 'un-exploded' kit will be handled as if it were a standard Inventory Item.

The Sales Journal will be modified to add a plus sign '+' to the front of the Bill to Name field for all Invoices affected by this enhancement.

If an order is shipped partial, then a back order type order will be created for the balance. The quantities in the item warehouse file for on order, on back order and committed will adjust per standard Sage 100 during Sales Journal update.

All inventory items that have the same warehouse as the invoice header warehouse and all other line types will vanish (i.e. not produce Inventory Transfer entries) and have no effect on processing.

If the only inventory items on an invoice for a transfer customer reference the same warehouse, an invoice will be produced and the document will be recorded on the Sales Journal with a '+' sign. Update will only delete the lines and the order and it will decrement the item warehouse's quantities on order and committed.

The update of these transfer invoices will not create General Ledger postings, nor will it update any Accounts Receivable, Inventory or Sales Order files. Specifically, this means no:

- open invoices
- commission records
- update of sales in the Customer Masterfile
- relief of inventory warehouse file's Quantity on Hand
- update of S/O Recap files
- revenue
- receivable
- cost postings

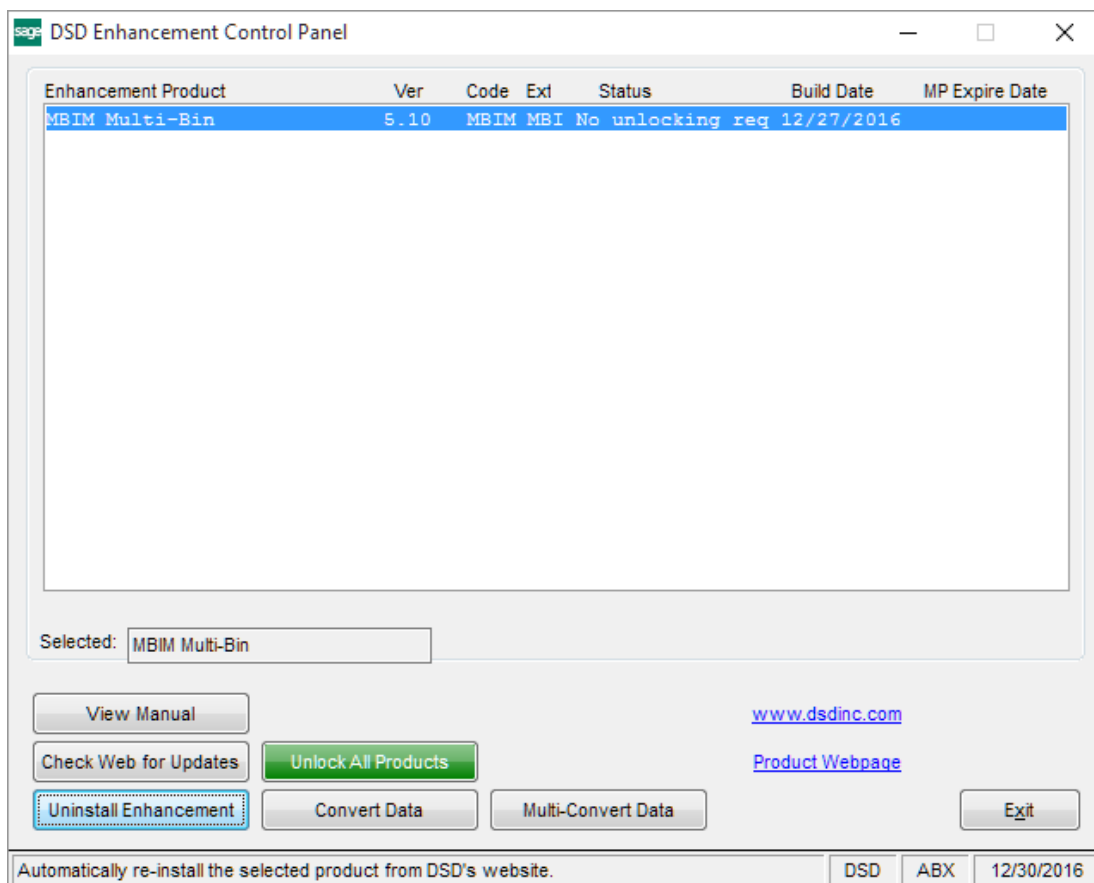
I/M Transaction Transfers

Once the Sales Journal has been updated, proceed to Inventory Transaction Entry to print and update the I/M Transaction Journal. The Sales Journal Update to create the I/M Transfers will use the Unit Cost

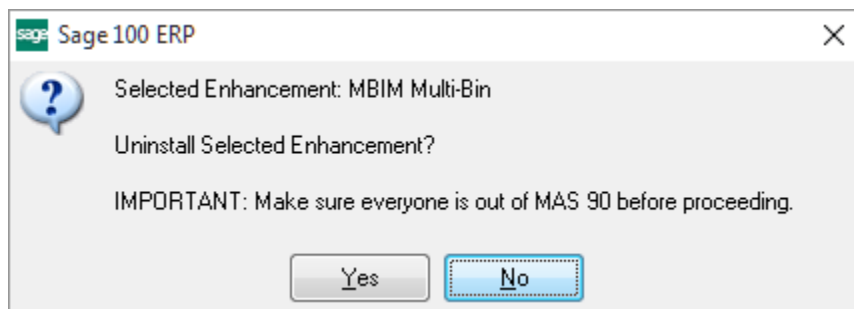
that would default if the item were entered manually on a Transfer Entry. If the item is of serial or lot valuation, the lot/serial numbers from the invoice will be distributed on the Transfer Entry.

Section E: Uninstall DSD Enhancements

A DSD Enhancements Uninstall Utility has been provided for the purposes of removing DSD Enhancements from your Sage 100 System. This utility may be accessed from the **DSD Enhancement Control Panel** menu option on the **Library Master / Utilities** menu.

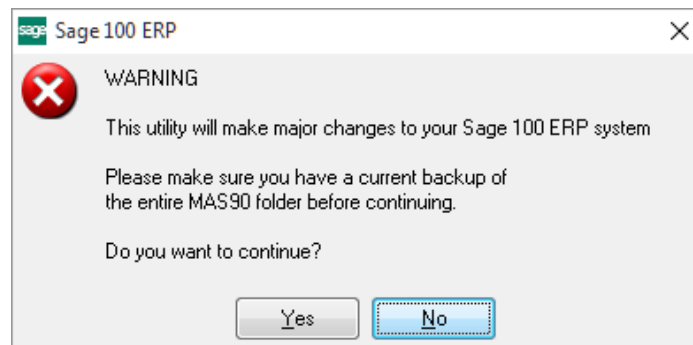


When accessing the **DSD Enhancement Control**, select the enhancement that you wish to Uninstall, and then select the **Uninstall Enhancement** button. The following message box will appear:



Select **No** to exit the Uninstall Process.
Select **Yes** to continue with the Uninstall Process.

The following message box will appear, to remind you that a complete backup of your entire Sage 100 system should be completed prior to uninstalling a DSD product.



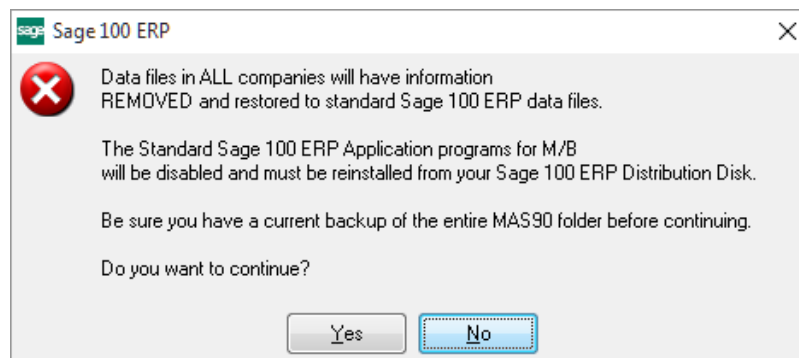
Select **No** to exit the Uninstall Process.
Select **Yes** to continue with the Uninstall Process.

After the Uninstall of the DSD Enhancement, you MUST reinstall certain standard Sage 100 modules, followed by reinstallation of Product Updates and Hot Fixes, if applicable.

A message box will appear, and will display which of those specific Sage 100 modules you must reinstall afterwards.

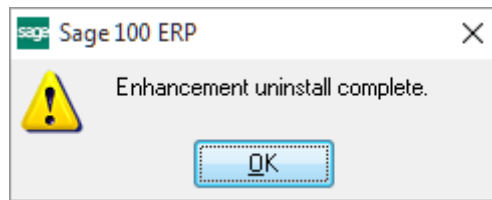
Select **No** to exit the Uninstall Process.
Select **Yes** to continue with the Uninstall Process.

The following message box will appear, displaying the final warning message.



Select **No** to exit the Uninstall Process.
Select **Yes** to continue with the Uninstall Process. At this point, the DSD Enhancement will be removed from the Sage 100 system.

After completion of the Uninstall, the following message box will appear. Select OK to continue.



Now that the Uninstall process is completed, you must:

- Reinstall the applicable standard Sage 100 modules
- Reinstall the latest Sage 100 Service Pack/Updates, if applicable.
- Reinstall any other DSD Enhancements or Developer products that are affected from the reinstallation of the standard Sage 100 module(s).