



DSD Business Systems

Sage 100 Enhancements

S183

‘Drop Ship’ Warehouse for SO and PO

SO-1183

Version 7.10



Information in this document is subject to change without notice.

Copyright 1993-2023, DSD Business Systems All rights reserved.

'Drop Ship' Warehouse for SO and PO User's Manual
Version 7.10

15 May, 2023

DSD Business Systems
8787 Complex Drive
Suite 400
San Diego, CA 92123
858/550-5900 8:00am to 5:00pm PST
858/550-4900 Fax

Trademarks

ProvideX® is a Trademark of Sage Software.

Windows is a trademark of Microsoft Corporation.

Sage 100® is a registered trademark of Sage Software.

PXPlus® is a registered trademark of PVX Plus technologies

All other product names and brand names are service marks, and/or trademarks or registered trademarks of their respective companies.

This documentation and the software described herein, is prepared and published under license. Sage Software has not tested or verified either the software or any representation in this documentation regarding the software. Sage Software does not make any warranty with respect to either this documentation or the software described herein, and specifically disclaims any warranty, express or implied, with respect hereto, including the warranties of fitness for a particular purpose and merchantability.

Table of Contents

SECTION A: INTRODUCTION	5
WEB RESOURCES	5
SUPPORT	5
'DROP SHIP' WAREHOUSE FOR SO AND PO FEATURES.....	6
SECTION B: GETTING STARTED	7
REQUIRED LEVELS	7
INSTALLATION	7
DSD ENHANCEMENT CONTROL PANEL	9
SECTION C: SETUP	11
SECTION D: SYSTEM OPERATIONS	12
SALES ORDER ENTRY	12
SALES JOURNAL UPDATE.....	13
PURCHASE ORDER ENTRY	13
AUTO GENERATE FOR SALES ORDERS.....	14
ODBC DICTIONARY	15
SECTION E: UNINSTALL DSD ENHANCEMENTS	15

Section A: Introduction

This manual contains a description and instructions for this DSD product. Operating instructions are included for the features added by this product to Sage 100. For instructions on using Sage 100, refer to the appropriate Sage 100 manual, or call your Sage 100 reseller. DSD Business Systems offers excellent Sage 100 support, at an hourly rate.

Web Resources

DSD web site: <http://www.dsdinc.com>

The Enhancement page contains:

- Current Release Schedule*
- Purchasing Information*
- Installation Instructions*
- Product Support*
- Enhancement Links*

S183 'Drop Ship' Warehouse for SO and PO:

<http://www.dsdinc.com/enhancement/drop-ship-warehouse-for-sales-order-purchase-order-2>

The product web page contains:

- Product Description*
- Web Links*
- Current Product Version Table*
- Product Installation File Download*
- Product Manual in .pdf Format*
- Revision History*
- FAQ*

Support

DSD provides product support through Sage 100 resellers. Support is provided for the current version. Older versions are supported at an hourly rate. DSD's telephone number is **858-550-5900**. Fax: **858-550-4900**.

For a hard error, where the program displays an error dialog, report:

- Error number.*
- Program name.*
- Line number.*
- Program version.*
- Exact sequence that caused the error, including menus and menu selections.*

Other pertinent information.

If leaving a message or faxing, please include:

Your name.

Your phone number (and fax if applicable) and extension.

It is possible to be unable to duplicate a problem, because of data corruption or because we have not exactly duplicated a particular operating environment. In such circumstances, we can only continue to try to fix the problem if we can either access the system with Symantec PCAnywhere or by some other means access or duplicate the system.

'Drop Ship' Warehouse for SO and PO Features

This DSD Extended Solution allows for transactions to be made in the Inventory module for items which have been drop shipped. The user will not check the DS box in Sales Order and will not create a 'Drop Ship' type Purchase Order. Instead they will reference a setup specific warehouse on the sales order and the purchase order. When this warehouse is used on a sales order line you will have access to the Unit Cost field for Items using Standard and Average Cost valuations. When this warehouse is used on a standard purchase order, you will be allowed to create the purchase order from a sales order.

Section B: Getting Started



- **If you reinstall or upgrade one of the Sage 100 modules listed in the following table, you must also reinstall this Enhancement.**
- Enhancements from different Sage Developers are generally not designed to work together. If installed together, problems are likely to occur.
- **Check with DSD before installing more than one Enhancement.**

Required Levels

Sage 100 Module	Module Required	Required Level
S/O	Y	7.10
P/O	Y	7.10

Installation

1. **Back-up:** Exit all Sage 100 sessions. Back-up existing Sage 100 data.
2. **Check Levels:** Sage 100 module levels **must match** those listed above.
3. **Run Enhancement Setup Program:** Save the executable installation program (sent to you or downloaded from our website) in a convenient location on the Sage 100 server. Launch the program from Windows Explorer or by selecting Start/Run, and then browse for the file in the location you saved it. Follow on-screen instructions.
4. **Send your Sage Serial Number to your DSD Representative:** Send your Sage Serial Number to your DSD representative in order for us to send you back the encrypted keys to unlock your system. This serial number can be found in Library Master\Setup\System Configuration, Tab 3. Registration as Serial Number.
5. **Re-Start Sage 100:** Sage 100 will be updated.
6. **Unlock the Enhancement:** DSD Enhancements must be unlocked to run. When any part of the Enhancement is run for the first time, the **DSD Enhancement License Agreement and Activation** window will appear. Follow the steps shown on that window. *You can click the Help button for more detailed instructions.*

Note: On the next page is a screenshot of the DSD Enhancement License Agreement and Activation window.

After accepting the License Agreement, you can then select the type of unlocking that you'd prefer. The choices are File, Web, Demo and Manual Entry.

File Unlock: After receiving your encrypted serial number key file from DSD, and placing that file in the MAS90/SOA directory, selecting this option will unlock all products keys contained in the file. This means you can unlock all enhancements at once using this option.

Web Unlock: If the system that is running the DSD Enhancement *has web access* and you *have sent DSD your Sage Serial number*, you can unlock the Enhancement without assistance using Web

Unlock. When this option is selected, the program will attempt to download encrypted serial number key file from DSD and then proceed to unlock all enhancements contained in the file.

- The Sage 100 system that is being used must have web access for this option to be effective.
- You can send your Sage Serial Number to your DSD Enhancements sales representative.

Demo Unlock: If a Demo mode is available for the Enhancement you're running, you will be able to Demo unlock the product without assistance from DSD for demo purposes.

- Creating a Demo Unlock is a good way to temporarily unlock DSD Enhancements off-hours, if you do not have web or email access. Later, you can unlock the product fully, during business hours.

Manual Entry Unlock: If you want to unlock a single enhancement using a single encrypted key, you can select this option and enter the 64 character key you receive from DSD by copy and paste.

Note: You can also unlock a DSD Enhancement through the **DSD Enhancement Control Panel** found on the Library Master Utilities Menu. Then, select the Enhancement with your mouse from the list of Enhancements and click the **Unlock Product** button on the right side of the window.

7. **Convert Data:** After unlocking, the DSD Conversion Wizard will appear. Follow on-screen instructions to complete data conversion. You can exit the conversion program without converting data. The Enhancement will not proceed, however, until data is converted. If you enter an enhanced program and data has not been converted, the conversion program will run again.

DSD Enhancement License Agreement and Activation

License Agreement

YOU MUST READ THIS AGREEMENT COMPLETELY AND AGREE BEFORE PROCEEDING. SCROLL THROUGH THIS AGREEMENT USING THE SLIDER CONTROL.

IMPORTANT: THIS SOFTWARE IS LICENSED BY DSD BUSINESS SYSTEMS, INC. TO CUSTOMERS FOR THEIR USE ONLY IN ACCORDANCE WITH THE TERMS SET FORTH IN THIS CUSTOMER LICENSE AGREEMENT. OPENING OR USING THIS PACKAGE CONSTITUTES ACCEPTANCE OF THESE TERMS. IF THE TERMS OF THIS LICENSE ARE NOT ACCEPTABLE, THE CUSTOMER MAY OBTAIN A FULL REFUND OF ANY MONEY PAID IF THIS UNUSED, UNOPENED PACKAGE IS RETURNED WITHIN TEN (10) DAYS TO THE DEALER FROM WHICH IT WAS ACQUIRED.

1 Agree to License Agreement
☒ Agree ☐ Disagree

2 Select Unlocking Type
☐ Web ☐ File
☐ Demo ☒ Manual Entry

3 Call DSD at 858-550-5900
 Have this information ready: End User Name
 Serial Number

4 Enter the following from DSD
 Activation Key:
 Click to Unlock:

DSD ABX 12/30/2016

DSD Conversion Wizard: Step One, Introduction

DSD BUSINESS SYSTEMS

This company's data needs to be converted.
 This program will perform the conversion.

DSD Enhancement Control Panel

Starting with version 3.61, all DSD Enhancement products include DSD's Enhancement Control Panel. The **DSD Enhancement Control Panel is accessed from the Library Master Utilities menu.**

The DSD Enhancement Control Panel is a simple to use yet powerful system to help maintain DSD Enhancements installed on a Sage 100 system. To use it, select an Enhancement product from the list on the window and then click the button, on the right side of the window, which corresponds with the desired task.

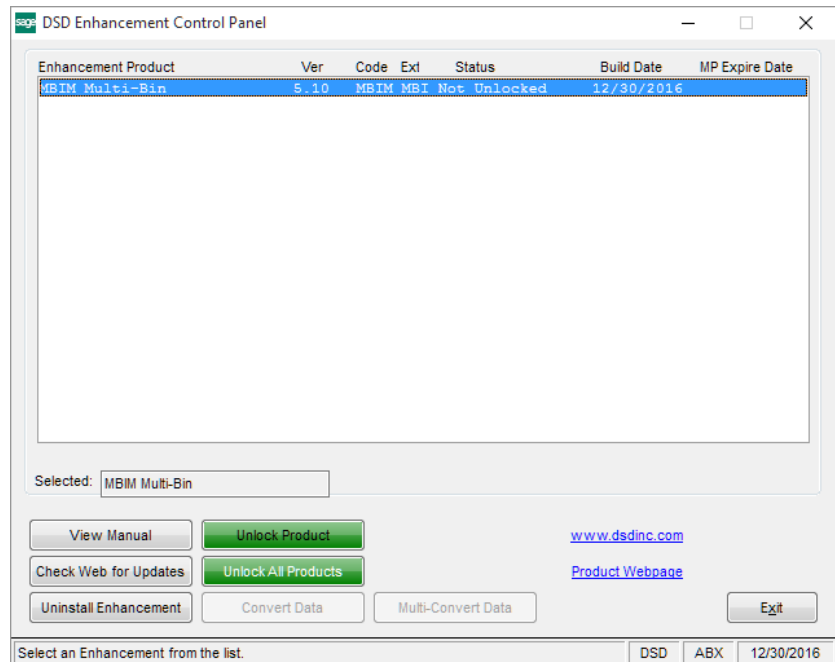
View Manual: This button will display the product manual for the selected Enhancement using Adobe Acrobat. For this to be possible, the PDF file for the corresponding manual must be in the "MAS90/PDF" folder in the Sage 100 system. If the file is not present, and the system has web access, the correct PDF file will be automatically downloaded from the DSD website, put into the "MAS90/PDF" folder and then displayed.

Check the Web for Updates: This button will check the DSD website to see what the current build is the selected Enhancement and alert the user if a later version is available. *This requires an internet connection on the Sage 100 system.*

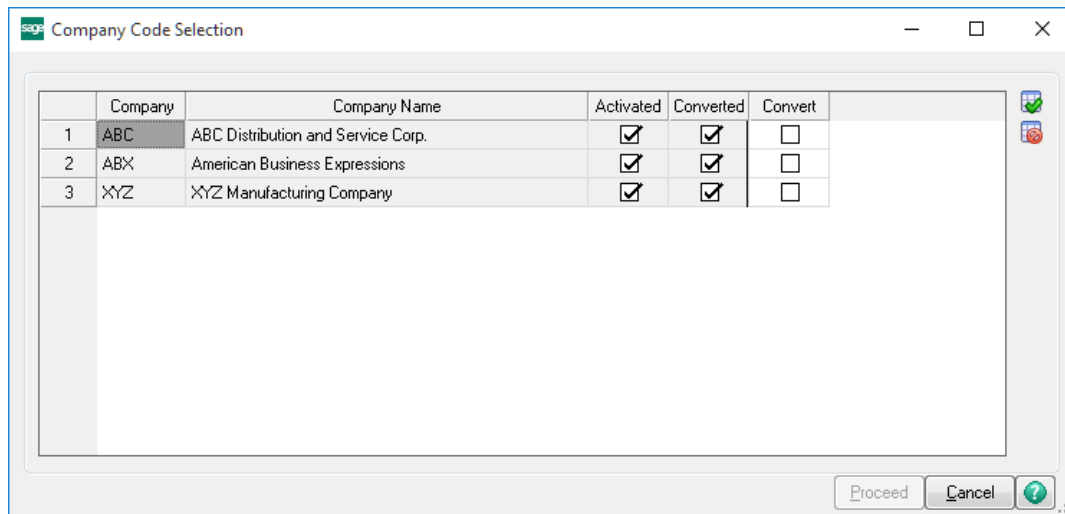
Unlock Product: This will cause the DSD Enhancement License Agreement and Activation window to appear. Using this window is described on the previous page. *This button is disabled if the selected Enhancement is already unlocked or if unlocking is not required.*

Unlock All Products: This will cause the DSD Enhancement All License Agreement and Activation window to appear. This window is similar to the one described on the previous page, but has only web and file as options to unlock. *This button is never disabled.*

Convert Data: After verification, the selected Enhancement's data conversion program will run. Data conversion is non-destructive, and may be triggered any number of times. Sometimes this is required to fix data records imported or updated from a non-enhancement installation.



Multi-Convert Data: Multiple Companies can be converted at the same time for a given Enhancement. *(If you have a large number of Companies to convert, please do in batches of 20 or fewer due to memory limitations.)*



Help: The Help button, located at the bottom right of the window, opens an HTML help file.

Get Adobe Acrobat: Opens the Adobe Acrobat website to the page where Acrobat can be downloaded and installed.

Uninstall Enhancement If this option is available, then selecting this button will start the un-install process, removing the enhancement from the system. (for more information see [Uninstall DSD Enhancements](#))

Section C: Setup

Upon completion of software installation, you will need to access the DSD Extended Solutions Setup from the Sales Order Setup menu. Select this part number and the Setup screen for this Extended Solution will appear. Check the 'Enable DSD Extended Solution' box to activate this Extended Solution.

Answer the following prompts:

Drop Ship Warehouse: Specify the warehouse code that will be used to designate a drop ship transaction.

Check Vendor from S/O Detail Line: Check this box if you wish to create P/O lines for only those S/O lines that matches the Vendor on the P/O.

Enable Auto Generate POs to use Drop Ship Warehouse: Check this box if you wish to create P/Os using this enhancement in the Sales Order Data Entry and Auto Generate from Sales Order tasks.

Copy Ship To Address information from Sales Order: Check this box if you wish to copy the Sales Order Ship To Address information to the corresponding Purchase Order Ship To Address fields.

S/O Sales Order Header UDF for 'Warehouse' Default: Specify a Custom Office S/O Header checkbox type UDF if you wish to default the Order's header warehouse to the 'Drop Ship' warehouse when the UDF is checked.

You should visit this Setup screen after each upgrade or reinstallation of this Extended Solution.

Section D: System Operations

Sales Order Entry

During Sales Order Line entry, enter the Setup-specified 'Drop Ship' Warehouse on the line if you want to denote that the line is a drop ship. Do not check the 'DS' flag. When this warehouse is referenced on the line, the Unit Cost field will be available for editing Items using Standard or Average Cost valuations.

If you specified a 'Warehouse Default' UDF, each Sales Order whose UDF is checked will default its 'Whse' field on the Order Header to the setup specified 'Drop Ship' Warehouse.

If you checked the option to 'Enable Auto Generate POs to use Drop Ship Warehouse' on the SO-1183 setup screen and enabled the standard Purchase Order setup option 'Enable Purchase Order Generation during Sales Order Entry' (on the 'Generate' tab), a new button 'Generate DS PO' will be available on the Sales Order Entry 'Totals' tab. Press this button to generate a new Purchase Order for all the 'Drop Ship' Warehouse lines of this order that have not already been assigned to a Purchase Order.

Sales Order Entry (ABC) 4/21/2023

Order Number: 0000181

1. Header 2. Address 3. Lines 4. Totals 5. Payment

User: dsd

Order Date: 4/5/2023 Order Type: Standard Order Intercomp Copy

Customer No.: 01-ABF American Business Futures Salesperson: 0100

Amount Subject to Discount: 187.95
 Discount Rate: .000%
 Discount Amount: .00

Deposit Payment Type: NONE
 Check Number:
 Deposit Amount: .00

Taxable Amount: .00
 Non-Taxable Amount: 187.95

Commission Rate: 10.000%
 Sales Tax Amount: .00
 Order Total: 187.95

Ship Zone:
 Ship Weight: 00070
 Freight Amount: .00

Print Order... Print Pick... Recalc Price

Accept Cancel Delete

Sales Journal Update

During Sales Journal update, the line's Unit Cost will be used for Standard and Average Cost valuations, unless it is set to zero. In the event that the Unit Cost is zero, standard Sage 100 will attempt to locate a non-zero Unit Cost from the Inventory Masterfile per the standard Sage 100 costing hierarchy.

Purchase Order Entry

Standard Order type Purchase Order entry has been modified with a curved arrow button located in the upper-right corner of the header screen. It will allow for a toggle between the entry of a Sales Order Number and a Master/Repeating P/O Number.

The screenshot displays the 'Purchase Order Entry (ABC) 8/6/2020' window. The interface includes a header section with tabs for '1. Header', '2. Address', '3. Lines', and '4. Totals'. The 'Header' tab is active, showing fields for 'Order Number' (5500006), 'Order Date' (8/6/2020), 'Order Type' (Standard Order), 'Vendor No.', 'Name', 'Purchase Address', 'Ship-To Address' (0000), 'Terms Code', 'Ship Via', 'Warehouse' (000), 'Order Status' (New), 'Required Date' (8/6/2020), 'Sales Tax', 'Schedule', 'Use Tax', 'Confirm To', 'E-mail', 'Telephone', 'Ext', 'Fax', 'Batch Fax', 'Comment', 'On Hold', and 'Print Order'. A curved arrow button is located in the upper-right corner of the header section, used for toggling between Sales Order and Master/Repeating P/O Number entry.

When a Sales Order Number is selected

- The Purchase Order Ship-To information will default from the Sales Order Ship-To information if this option is selected in setup.
- If 'Check Vendor from Item Master' was left blank, then all Inventory line items which reference the Drop Ship warehouse on the Sales Order will be copied over. If you checked the Setup option, 'Check Vendor from Item Master,' then only those Sales Order lines that list the Vendor on this P/O as one of their specified Vendors in the Vendor Items Masterfile as well as reference the Drop Ship warehouse will be copied over. In either case the Unit Cost specified on the Sales Order line will default to the Purchase Order line.

Sales Order lines with the Drop Ship box checked will not transfer to the Purchase Order when creating a Purchase Order as described above.

Auto Generate for Sales Orders

If you checked the option to 'Enable Auto Generate POs to use Drop Ship Warehouse' on the SO-1183 setup screen a new check box 'Create PO's for Drop Ship Warehouses' has been added to the 'Options' section of this task. Note: Checking this box will disable and reset any options that are not supported by the SO-1183 creation logic.

Auto Generate from Sales Orders (ABC) 4/21/2023

Sales Order Types to Generate From
All Types ☐ Standard ☒ Back Orders ☐ Quotes ☐ Master ☐ Repeating ☐

Sales Order Statuses to Generate From
All Statuses ☒ Open ☒ New ☒ Hold ☒

Procurement Types to Generate
All Types ☒ Make ☒ Buy ☒ Subcontract ☒

Product Types to Generate
All Types ☒ Finished Goods ☒ Raw Materials ☒ Discontinued ☒ Kits ☒

Item Types to Generate
All Types ☐ Inventory ☒ Special ☐ Miscellaneous ☐

Options

Create PO's for Drop Ship Warehouses ☒

Include Drop Ship Lines

No

Base Order Quantity On

Sales Order Quantity

Update Unit Cost With

Costing Hierarchy

Summarize Multiple Items by Line ☐

Include Expired Sales Orders ☐

Summarize Drop Ship Lines by Vendor ☐

Use Back Ordered Quantity ☐

Update Unit Cost with SO Unit Cost for Drop Ship Lines ☐

Add Sales Order Customer Detail as a Comment Line ☐

Comments to Generate

Include SO Comment Lines

None

Format PO Header Comment With

None

Include Sales Order Item Line Comments ☐

Select Field	Operand	Value
Sales Order Number	All	
Sales Order Date	All	
Customer Number	All	
Salesperson	All	
Vendor Number	All	
Item Code	All	

Clear
Default Settings...
Proceed
Cancel

ODBC Dictionary

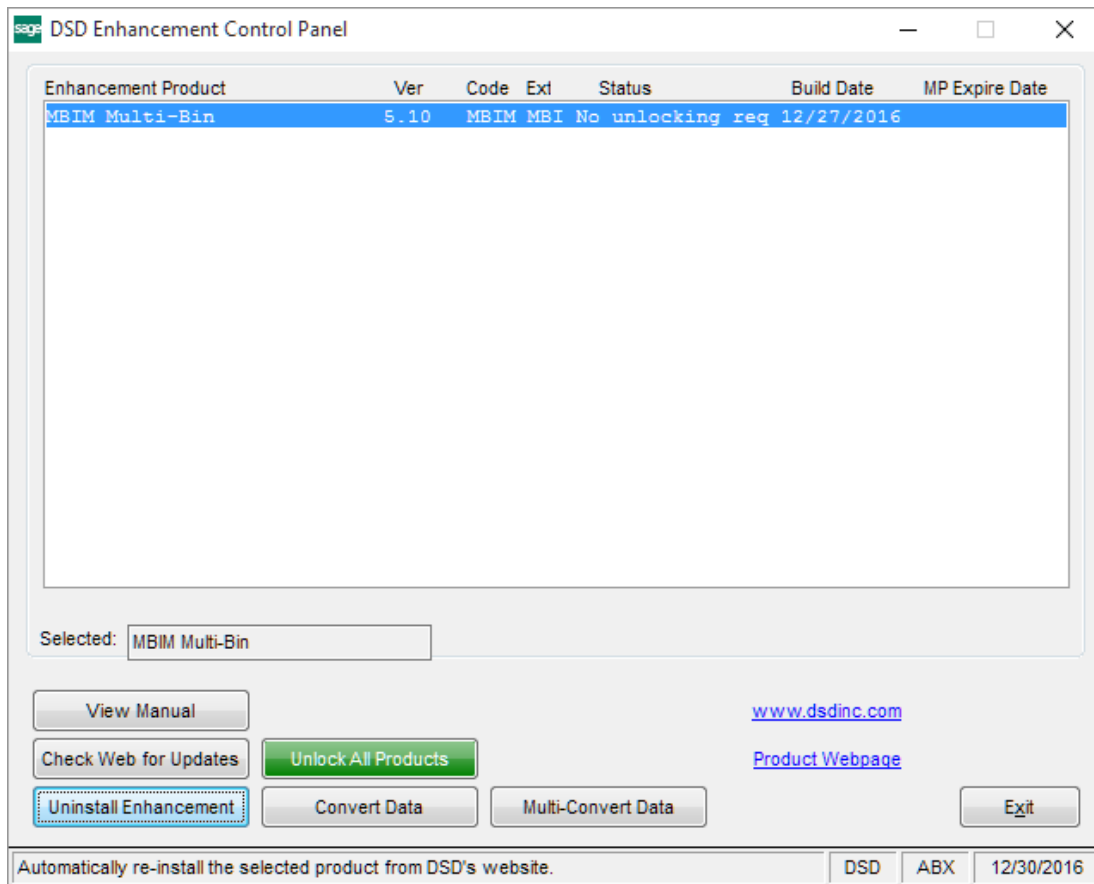
The files listed below have been added or changed in the ODBC Dictionaries by this Extended Solution for Crystal Reports purposes.

<i>File:</i>	<i>Description</i>	<i>Field:</i>
PO1	Purchase order Entry Header	SalesOrderNumber

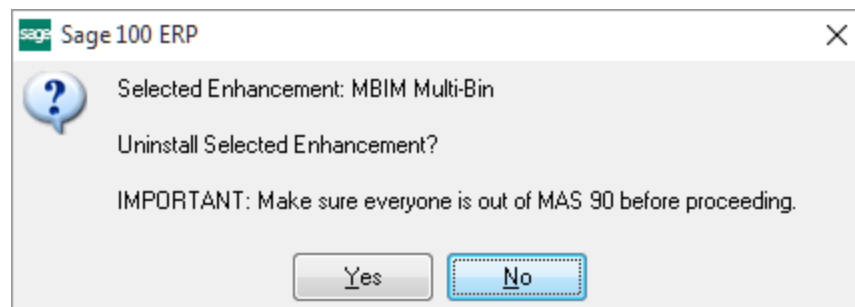
Be aware that the ODBC Dictionaries may contain other files and data fields that will be unavailable without their corresponding Extended Solutions installed.

Section E: Uninstall DSD Enhancements

A DSD Enhancements Uninstall Utility has been provided for the purposes of removing DSD Enhancements from your Sage 100 System. This utility may be accessed from the **DSD Enhancement Control Panel** menu option on the **Library Master / Utilities** menu.

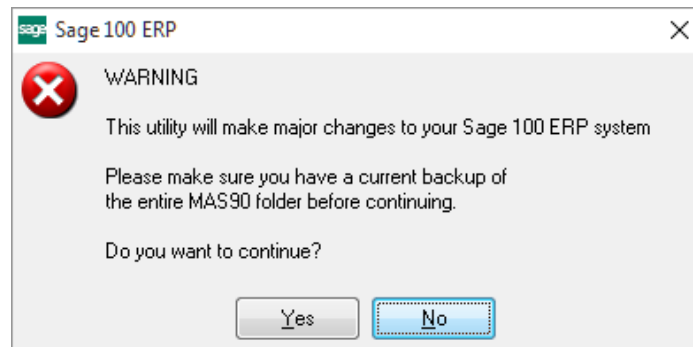


When accessing the **DSD Enhancement Control**, select the enhancement that you wish to Uninstall, and then select the **Uninstall Enhancement** button. The following message box will appear:



Select **No** to exit the Uninstall Process.
 Select **Yes** to continue with the Uninstall Process.

The following message box will appear, to remind you that a complete backup of your entire Sage 100 system should be completed prior to uninstalling a DSD product.



Select **No** to exit the Uninstall Process.

Select **Yes** to continue with the Uninstall Process.

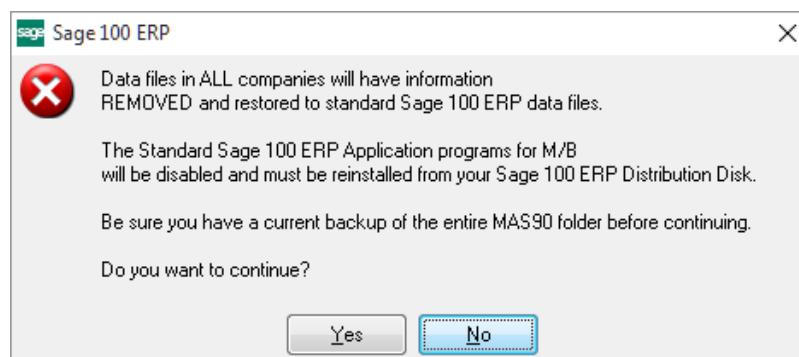
After the Uninstall of the DSD Enhancement, you MUST reinstall certain standard Sage 100 modules, followed by reinstallation of Product Updates and Hot Fixes, if applicable.

A message box will appear, and will display which of those specific Sage 100 modules you must reinstall afterwards.

Select **No** to exit the Uninstall Process.

Select **Yes** to continue with the Uninstall Process.

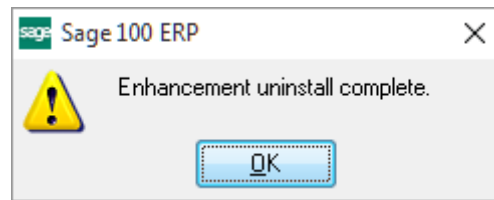
The following message box will appear, displaying the final warning message.



Select **No** to exit the Uninstall Process.

Select **Yes** to continue with the Uninstall Process. At this point, the DSD Enhancement will be removed from the Sage 100 system.

After completion of the Uninstall, the following message box will appear. Select OK to continue.



Now that the Uninstall process is completed, you must:

- Reinstall the applicable standard Sage 100 modules
- Reinstall the latest Sage 100 Service Pack/Updates, if applicable.
- Reinstall any other DSD Enhancements or Developer products that are affected from the reinstallation of the standard Sage 100 module(s).