



DSD
BUSINESS SYSTEMS

DSD Business Systems

MAS 90/200 Enhancements

S175

Lot/Serial Distribution from Sales Order

SO-1175

Version 4.40.PU2



Information in this document is subject to change without notice.

Copyright 1993-2010, DSD Business Systems All rights reserved.

Lot/Serial Distribution from Sales Order User's Manual
Version 4.40.PU2

6 October, 2010

DSD Business Systems
5120 Shoreham Place
Suite 280
San Diego, CA 92122
858/550-5900 8:00am to 5:00pm PST
858/550-4900 Fax

Trademarks

ProvideX® is a Trademark of Sage Software.

Windows is a trademark of Microsoft Corporation.

MAS 90/200® is a registered trademark of Sage Software.

PXPlus® is a registered trademark of PVX Plus technologies

All other product names and brand names are service marks, and/or trademarks or registered trademarks of their respective companies.

This documentation and the software described herein, is prepared and published under license. Sage Software has not tested or verified either the software or any representation in this documentation regarding the software. Sage Software does not make any warranty with respect to either this documentation or the software described herein, and specifically disclaims any warranty, express or implied, with respect hereto, including the warranties of fitness for a particular purpose and merchantability.

Table of Contents

SECTION A: INTRODUCTION	5
WEB RESOURCES	5
SUPPORT	5
LOT/SERIAL DISTRIBUTION FROM SALES ORDER FEATURES	6
SECTION B: GETTING STARTED	7
REQUIRED LEVELS	7
INSTALLATION	7
DSD ENHANCEMENT CONTROL PANEL	9
SECTION C: SETUP	11
SECTION D: SYSTEM OPERATIONS	13
SALES ORDER ENTRY	13
SALES ORDER INVOICE ENTRY AND SHIPPING ENTRY	13
AUTO GENERATE INVOICE SELECTION	14
SALES ORDER, PICKING SHEET, AND OPEN SALES ORDER REPORT	15
INVENTORY MAINTENANCE/INQUIRY	17
INVENTORY STOCK STATUS REPORT	19
LOT/SERIAL ORDER LOOKUP	20
CUSTOM OFFICE USER DEFINED FIELD MAINTENANCE	21
INTEGRATION WITH BAR CODE MASTER S/O INVOICE IMPORT	21
ODBC DICTIONARY	22
SECTION E: UNINSTALL DSD ENHANCEMENTS	24
LICENSE AGREEMENT	27
FAX TRANSMITTAL FORM	29

Section A: Introduction

This manual contains a description and instructions for this DSD product. Operating instructions are included for the features added by this product to MAS 90/200. For instructions on using MAS 90/200, refer to the appropriate MAS 90/200 manual, or call your MAS 90/200 reseller. DSD Business Systems offers excellent MAS 90/200 support, at an hourly rate.

Web Resources

DSD web site: <http://www.dsdinc.com>

The Enhancement page contains:

- Current Release Schedule*
- Purchasing Information*
- Installation Instructions*
- Product Support*
- Enhancement Links*

S175 Lot/Serial Distribution from Sales Order:

<http://www.dsdinc.com/enh/pages/S175.htm>

The product web page contains:

- Product Description*
- Web Links*
- Current Product Version Table*
- Product Installation File Download*
- Product Manual in .pdf Format*
- Revision History*
- FAQ*

Support

DSD provides product support through MAS 90/200 resellers. Support is provided for the current version. Older versions are supported at an hourly rate. DSD's telephone number is **858-550-5900**. Fax: **858-550-4900**.

For a hard error, where the program displays an error dialog, report:

- Error number.*
- Program name.*
- Line number.*
- Program version.*

*Exact sequence that caused the error, including menus and menu selections.
Other pertinent information.*

If leaving a message or faxing, please include:

Your name.

Your phone number (and fax if applicable) and extension.

It is possible to be unable to duplicate a problem, because of data corruption or because we have not exactly duplicated a particular operating environment. In such circumstances, we can only continue to try to fix the problem if we can either access the system with Symantec PCAnywhere or by some other means access or duplicate the system.

Lot/Serial Distribution from Sales Order Features

This Extended Solution provides the ability to distribute Lot Numbers and Serial Numbers during Sales Order Entry.

This Extended Solution is integrated with the Bar Code module's S/O Invoice Import.

Section B: Getting Started



- **If you reinstall or upgrade one of the MAS 90/200 modules listed in the following table, you must also reinstall this Enhancement.**

- Enhancements from different Sage Developers are generally not designed to work together. If installed together, problems are likely to occur.
- **Check with DSD before installing more than one Enhancement.**
- **Do not install this Enhancement on MAS SQL Systems.**

Required Levels

MAS 90/200 Module	Module Required	Required Level
I/M	Y	4.40.PU2
S/O	Y	4.40.PU2
B/C	N	4.40.PU2

Installation

1. **Back-up:** Exit all MAS 90/200 sessions. Back-up existing MAS 90/200 data.
2. **Check Levels:** MAS 90/200 module levels **must match** those listed above.
3. **Run Enhancement Setup Program:** Save the executable installation program (sent to you or downloaded from our website) in a convenient location on the MAS 90/200 server. Launch the program from Windows Explorer or by selecting Start/Run, and then browse for the file in the location you saved it. Follow on-screen instructions.
4. **Send your Sage Serial Number to your DSD Representative:** Send your Sage Serial Number to your DSD representative in order for us to send you back the encrypted keys to unlock your system. This serial number can be found in Library Master\Setup\System Configuration, Tab 3. Registration as Serial Number.
5. **Re-Start MAS 90/200:** MAS 90/200 will be updated.
6. **Unlock the Enhancement:** DSD Enhancements must be unlocked to run. When any part of the Enhancement is run for the first time, the **DSD Enhancement License Agreement and Activation** window will appear. Follow the steps shown on that window. *You can click the Help button for more detailed instructions.*

Note: On the next page is a screenshot of the DSD Enhancement License Agreement and Activation window.

After accepting the License Agreement, you can then select the type of unlocking that you'd prefer. The choices are File, Web, Demo and Manual Entry.

File Unlock: After receiving your encrypted serial number key file from DSD, and placing that file in the MAS90/SOA directory, selecting this option will unlock all products keys contained in the file. This means you can unlock all enhancements at once using this option.

Web Unlock: If the system that is running the DSD Enhancement *has web access* and you *have sent DSD your Sage Serial number*, you can unlock the Enhancement without assistance using Web Unlock. When this option is selected, the program will attempt to download encrypted serial number key file from DSD *and then proceed to unlock all enhancements contained in the file*.

- The MAS 90/ 200 system that is being used must have web access for this option to be effective.
- You can send your Sage Serial Number to your DSD Enhancements sales representative.

Demo Unlock: If a Demo mode is available for the Enhancement you're running, you will be able to Demo unlock the product without assistance from DSD for demo purposes.

- *Creating a Demo Unlock is a good way to temporarily unlock DSD Enhancements off-hours, if you do not have web or email access. Later, you can unlock the product fully, during business hours.*

DSD Enhancement License Agreement and Activation

License Agreement

YOU MUST READ THIS AGREEMENT COMPLETELY AND AGREE BEFORE PROCEEDING. SCROLL THROUGH THIS AGREEMENT USING THE SLIDER CONTROL.

IMPORTANT: THIS SOFTWARE IS LICENSED BY DSD BUSINESS SYSTEMS, INC. TO CUSTOMERS FOR THEIR USE ONLY IN ACCORDANCE WITH THE TERMS SET FORTH IN THIS CUSTOMER LICENSE AGREEMENT. OPENING OR USING THIS PACKAGE CONSTITUTES ACCEPTANCE OF THESE TERMS. IF THE TERMS OF THIS LICENSE ARE NOT ACCEPTABLE, THE CUSTOMER MAY OBTAIN A FULL REFUND OF ANY MONEY PAID IF THIS UNUSED, UNOPENED PACKAGE IS RETURNED WITHIN TEN (10) DAYS TO THE DEALER FROM WHICH IT WAS ACQUIRED.

1 Agree to License Agreement
☒ Agree ☐ Disagree

2 Select Unlocking Type
☐ Web ☐ File
☐ Demo ☒ **Manual Entry**

3 Call DSD at 858-550-5900
 Have this information ready: End User Name:
 Serial Number:

4 Enter the following from DSD
 Activation Key:
 Click to Unlock:

ABC 4/28/2010

Manual Entry Unlock: If you want to unlock a single enhancement using a single encrypted key, you can select this option and enter the 64 character key you receive from DSD by copy and paste.

Note: You can also unlock a DSD Enhancement through the **DSD Enhancement Control Panel** found on the Library Master Utilities Menu. Then, select the Enhancement with your mouse from the list of Enhancements and click the **Unlock Product** button on the right side of the window.

- Convert Data:** After registration, the Data Conversion window will appear. Follow on-screen instructions to complete data conversion. *You can exit the conversion program without converting data. The Enhancement will not proceed, however, until data is converted. If you enter an enhanced program and data has not been converted, the conversion program will run again.*

DSD Enhancement Control Panel

Starting with version 3.61, all DSD Enhancement products include DSD's Enhancement Control Panel. The **DSD Enhancement Control Panel** is accessed from the **Library Master Utilities** menu.

The DSD Enhancement Control Panel is a simple to use yet powerful system to help maintain DSD Enhancements installed on a MAS 90/200 system. To use it, select an Enhancement product from the list on the window and then click the button, on the right side of the window, which corresponds with the desired task.

View Manual: This button will display the product manual for the selected Enhancement using Adobe Acrobat. For this to be possible, the PDF file for the corresponding manual

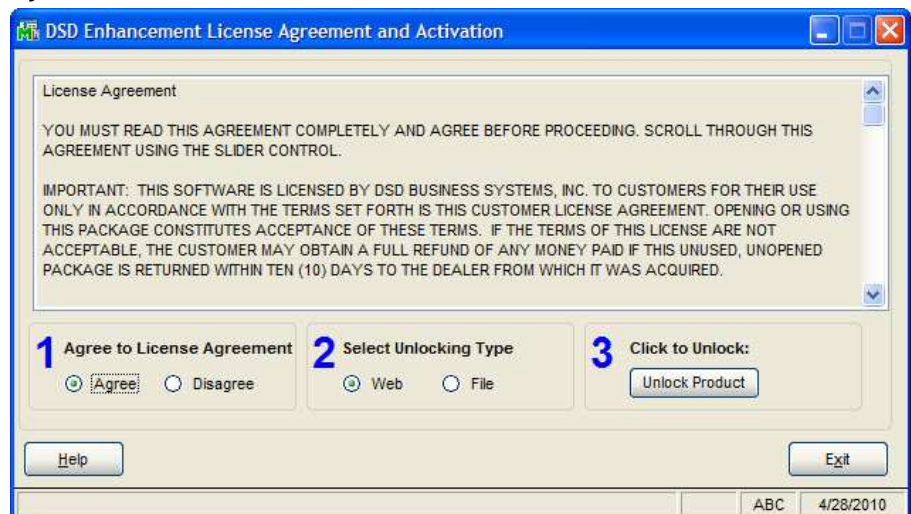
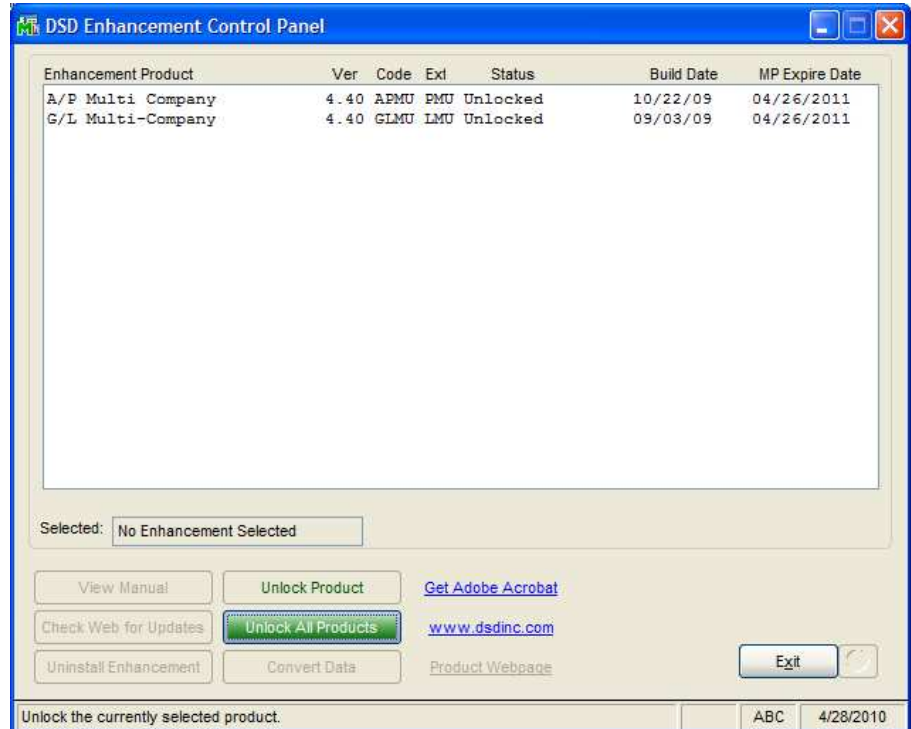
must be in the "MAS90/PDF" folder in the MAS 90/200 system. If the file is not present, and the system has web access, the correct PDF file will be automatically downloaded from the DSD website, put into the "MAS90/PDF" folder and then displayed.

Check the Web for Updates: This button will check the DSD website to see what the current build is the selected Enhancement and alert the user if a later version is available. *This requires an ftp web connection on the MAS 90/ 200 system.*

Unlock Product: This will cause the DSD Enhancement License Agreement and Activation window to appear. Using this window is described on the previous page. *This button is disabled if the selected Enhancement is already unlocked.*

Unlock All Products: This will cause the DSD Enhancement All License Agreement and

Activation window to appear. This window is similar to the one described on the previous page, but



has only web and file as options to unlock. *This button is never disabled*

Convert Data: After verification, the selected Enhancements data conversion program will run. Data conversion is non-destructive, and may be triggered any number of times. Sometimes this is required to fix data records imported or updated from a non-enhancement installation.

Help: The Help button, located at the bottom right of the window, opens an HTML help file .

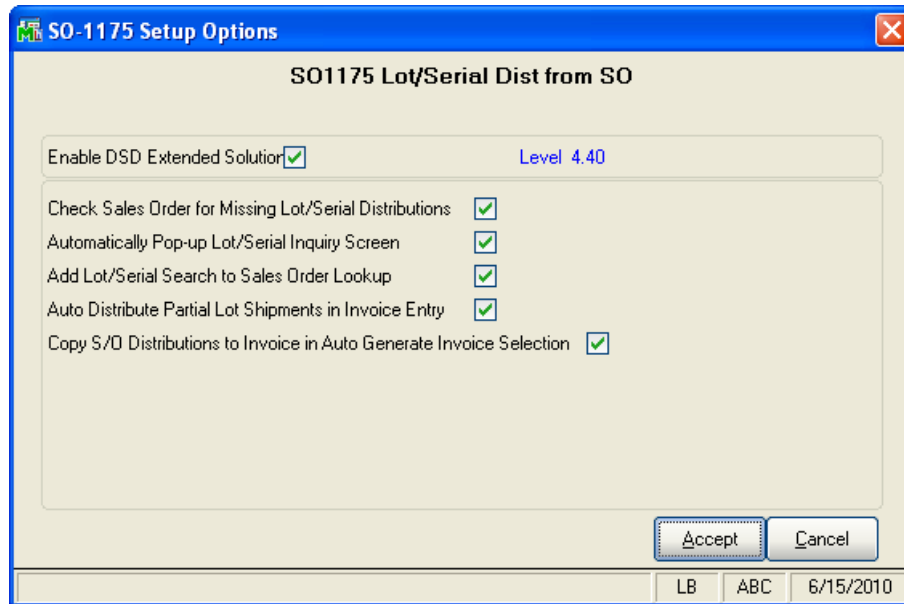
Get Adobe Acrobat: Opens the Adobe Acrobat website to the page where Acrobat can be downloaded and installed.

Uninstall Enhancement If this option is available, then selecting this button will start the un-install process, removing the enhancement from the system.

There are also links to the DSD website and the Enhancement page on that site.

Section C: Setup

Upon completion of software installation, you will need to access the DSD Extended Solutions Setup from the Sales Order Setup menu. Select this part number and the Setup screen for this Extended Solution will appear. Check the 'Enable DSD Extended Solution' box to activate this Extended Solution.



Answer the following prompts:

Check Sales Order for Missing Lot/Serial Distributions: Check this box to require that the Sales Order line be fully distributed before exiting.

Automatically Pop-up Lot/Serial Inquiry Screen: Check this box to have the Lot/Serial Inquiry screen pop up automatically in I/M Inquiry. If you leave this unchecked, you must click the 'L/S Inquiry' option on the 'More...' drop list to pop up this screen.

Add Lot/Serial Search to Sales Order Lookup: When you check this box, a search button ('SRCH') will be added to the Sales Order Number lookup.

Auto Distribute Partial Lot Shipments in Invoice Entry: Check this box to have the distribution quantity adjusted to the quantity shipped when there is only one lot number on the line.

The following option is available only if you checked the option to 'Check Sales Order for Missing Lot/Serial Distributions':

Copy S/O Distributions to Invoice in Auto Generate Invoice Selection: Check this box to have the existing Lot/Serial distributions from Sales Order copied to Invoice Entry as part of the Auto Generate Invoice process.

You should visit this Setup screen after each upgrade or reinstallation of this Extended Solution.

Role Maintenance

The following Task has been added to Sales Order, Setup Options:

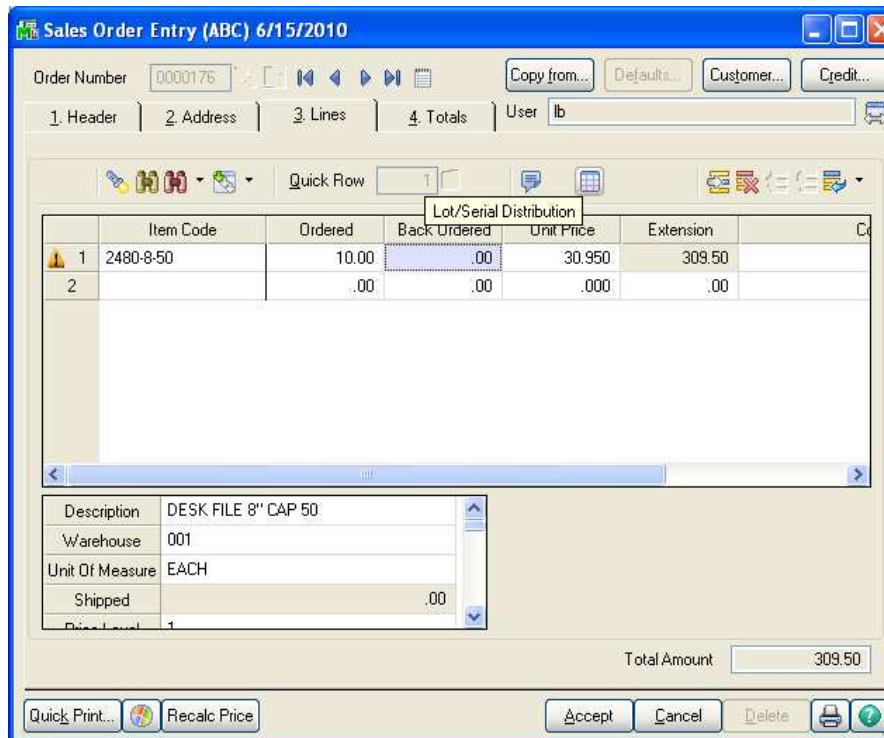
- ☐ DSD Extended Solutions Setup

Please review your security setup in Role Maintenance and make appropriate changes.

Section D: System Operations

Sales Order Entry

During Sales Order Entry, you will have the option of distributing lot or serial numbers associated with lot or serial valued Inventory items the same way as S/O Invoice Entry.



	Item Code	Ordered	Back Ordered	Unit Price	Extension	C
1	2480-8-50	10.00	.00	30.950	309.50	
2		.00	.00	.000	.00	

Description	DESK FILE 8" CAP 50
Warehouse	001
Unit Of Measure	EACH
Shipped	.00
Price Level	1

Total Amount 309.50

Lot/Serial distribution entries made during Sales Order Entry will change inventory commitments the same way Invoice Data Entry does. It is not required that the Sales Order line be fully distributed before exiting, unless you have checked the setup option to 'Check Sales Order for Missing Lot/Serial Distributions.' All other requirements present during Invoice Data Entry regarding Lot/Serial distribution entry are in effect. A Lot cannot be over-distributed; the Lot must have on-hand quantity in the line referenced warehouse to be distributed. Lot/Serial Numbers can be printed on the Sales Order form.

If you checked the 'Check Sales Order for Missing Lot/Serial Distributions' option, then the user MUST distribute the line or delete the line in order for the sales order to be Accepted.

Sales Order Invoice Entry and Shipping Entry

All lot and serial distribution records from a sales order line will be copied to the invoice line when Quantity Shipped on that line is changed from zero to non-zero via one of the following methods:

- In Shipping Data Entry, click the 'Ship Remain' button.
- Manually change quantity shipped from zero to non-zero.
- In Invoice Data Entry, answer 'Yes' to Ship Complete Sales Order'

The distributed quantity on the invoice will default from the distributed quantity on the sales order. Unless you specified to 'Auto Distribute Partial Lot Shipments In Invoice Entry' in Setup (see below) you will have to manually adjust the distribution quantity if the quantity shipped does not match this default.

In the tier distribution grid, a new column 'On SO' has been added to display the quantity distributed on sales order.

	Lot Number	Available	Distribute	On SO
1	JAN10	110.00	50.00	50.00
2		.00	.00	.00

Fix Quantity Distributed on Sales Order

Distribution Balance 50.00

OK Cancel ?

Click the 'Fix' button to unlock and change the On SO quantity if needed. Only lot/serial number that comes from sales order will unlock. The changed On SO quantity will write back to the sales order. Changing the On SO quantity to zero will delete the lot/serial distribution record from the sales order. Deleting a lot/serial number in invoice distribution entry will not delete the same record from the sales order if the On SO quantity is not zero.

You should not change the On SO quantity simply because you are shipping partial. The remaining On SO quantity will stay committed for the back order.

If you checked 'Auto Distribute Partial Lot Shipments In Invoice Entry' in setup, Invoice Entry will set the quantity distributed to equal the quantity shipped as changes are made to the quantity shipped field **so long as there is only one lot referenced on the sales order, and the quantity shipped does not exceed the quantity distributed on the sale order**. Automatic adjustment will not occur if there are multiple lots or the quantity shipped exceeds the quantity distributed on sales order.

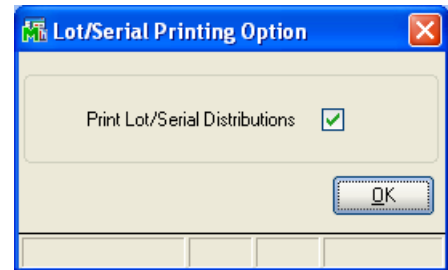
Auto Generate Invoice Selection

If you checked the option 'Copy S/O Distributions to Invoice in Auto Generate Invoice Selection,' existing order entry distributions will be copied to the invoice generated from the order.

Sales Order, Picking Sheet, and Open Sales Order Report

An option to 'Print Lot/Serial Distributions' has been added to Sales Order Printing, Sales Order Quick Print, Picking Sheet Printing, and Open Sales Order Report. Click the 'Lot/Ser' button to access this option.

If you check the option to print Lot/Serial distributions, one record per lot/serial number will be written to the work file. You must modify your form/report to check for the value in the LotSerialNo_001 field. A blank LotSerialNo_001 field indicates a regular item record. A non-blank LotSerialNo_001 field indicates a lot/serial distribution record. See Appendix for more printing information.



Inventory Maintenance/Inquiry

A 'Lot/Serial' radio button has been added to the top of the Orders tab. Check it to view Sales Order Lot/Serial Distribution information. A 'Committed' button has been added to this Lot/Serial Inquiry.

Item Inquiry (ABC) 6/21/2010

Item Code: FRTMCK1
Description: Fruit Mix - Berries

1. Main | 2. Additional | 3. Quantity | 4. History | 5. Transactions | 6. Orders | 7. Cost Detail

☐ Purchase Order ☐ Sales Order ☒ Lot/Serial

Lot/Serial No.	Customer No.	Customer Name	Order No.	Order Date	PO Number	Quantity
060101	01-LISA	Licensed Sales Inc	0000187	6/1/2010		35.00
060101	02-CUSTOM	Custom Craft Products	0000188	6/18/2010		15.00
060101	02-JELLCO	Jelco Packing	0000189	6/21/2010		3.00

Committed Quantity 53.00

OK

When you click this button, a screen will pop up, displaying the following:

Lot/Serial Number,
Warehouse, Total (Qty on Hand in that warehouse),
Allocated (Total Qty distributed to Sales Orders),
and Available (Total - Allocated). A drill down to the Sales Orders which reference this Lot is available for Lots which have an Allocated qty greater than zero. This drill down will list Customer Number, Order Number, Line Promise Date and Qty distributed to that line.

Sales Order Commitments

Lot Number	Warehouse	Total	Allocated	Available
060101	000	50	.00	50.00
060102	000	50	.00	50.00
060101	001	75	53.00	22.00
060102	001	125	.00	125.00

Search: <default>
Filters...
Custom...
Found 4 records

Sales Order Distribution Details

Customer Number	Order Number	Promise Date	Quantity
01-LISA	0000187	06/21/10	35.00
02-CUSTOM	0000188	06/21/10	15.00
02-JELLCO	0000189	06/21/10	3.00

OK

Item Inquiry (ABC) 6/21/2010

Item Code: FRTMDX1
Description: Fruit Mix - Berries

1. Main | 2. Additional | 3. Quantity | 4. History | 5. Transactions | 6. Orders | 7. Cost Detail

Product Line: C&A Cut&Arranged
Product Type: Finished Good Weight:
Valuation: Lot Volume: 0.0000
Procurement: Buy Inventory Cycle: C

Unit of Measure
Standard: EACH
Purchases: EACH No. of EACH: 1
Sales: EACH No. of EACH: 1

Price Code: STD STANDARD QUANTITY PRICING
Default Whse: 000 CENTRAL WAREHOUSE
Primary Vendor:
Warranty Code: 60 DAY 60 days from shipment

Allow Back Orders: ☒
Allow Trade Discount: ☒
Allocate Landed Cost: ☒

Sales
Retail Price: 20.000
Standard Price: 20.000
Last Sold:

Purchases
Standard Cost: 7.500
Average Cost: 7.500
Last Receipt: 6/10/2010

Last Costs
Item: 7.500
Allocated: .000
Total: 7.500

OK

A new 'L/S Inquiry' option has been added to the 'More...' drop down list of I/M Inquiry, which will be available if the valuation method is Lot or Serial. When you click this button, you will be presented with a window.

Inventory Lot/Serial Number Inquiry

Whse	On Hand	On PO	On SO	On BO	Committed	On W/O	Qty Avail
000	100.00	.00	.00	.00	.00	.00	100.00
001	200.00	.00	70.00	.00	70.00	.00	130.00
Totals							
	300.00	0.00	70.00	0.00	70.00	0.00	230.00

Lot/Serial Number	Whse	Customer Name	Qty On Hand	U/M	On S/O	Qty Available
060102	000		50.00			50.00
	001	Jellco Packing			2.00	
	001	Licensed Sales			15.00	
060101	001		75.00			22.00
060101	001	Custom Craft Pr			15.00	60.00
060101	001	Jellco Packing			3.00	57.00
060101	001	Licensed Sales			35.00	22.00
060102	001		125.00			125.00

OK

If you checked the 'Automatically Pop Up Lot/Serial Inquiry Screen' option in Setup, the screen will pop up automatically. The top portion of the screen will contain the IM2 recap, and underneath that will be a list box:

Lot #	Whse	Customer Name (first 15 characters)	Qty On Hand	U/M	On S/O (qty on THIS S/O)	Qty Available (On Hand - On S/O)
-------	------	--	-------------	-----	-----------------------------	-------------------------------------

The following entries will appear in the List Box in Warehouse/Lot or Serial Number order:

- A line for every Lot and Serial Number with a positive Qty On Hand.
- If the Lot/Serial item is distributed on a Sales Order, then there will be one line per Sales Order displayed under the original Lot/Serial line. The first 15 characters of the Customer Name and the difference between the Quantity Ordered and Quantity Shipped on the order will be included, and a 'calculated' Lot or Serial Qty Available will be calculated. The Qty Available calculation is a running summation and includes previous On SO quantities for that lot.
- Every reference to this Item on a Sales Order that has not yet been distributed to a Lot or Serial Number will also print. These undistributed entries will sort to the top within warehouse and will appear as 'blank' Lots or Serial Numbers for the warehouse referenced on the Sales Order line.

The Qty Available column in the top display box may not be the same total the Qty Available in the lower display. The lower display window lists only committed and uncommitted quantities from Sales Orders. Items can be committed from other modules and will not be included in the Qty Available in the lower display box.

Inventory Stock Status Report

The Inventory Stock Status Report has been enhanced to print all Lot/Serial numbers (and their distributed quantities) that are on Open Sales Orders associated with each Item number. This option is available only if the 'Print Whse Detail' box is checked.

Item Code/Description	Primary Vendor	Product Line	Product Type	Unit Of Measure	Whse	On Hand	On Purchase Order	Quantity On Sales Order	On Back Order	Available	Reorder Point	Average Cost
FRTMIX1 Fruit Mix - Berries	C&A	Finished Good	EACH	000	001	100.00	0.00	20.00	0.00	80.00	Cycle: C	7.500
Lot:						000101	0.00	50.00	0.00	150.00	0.00	
Item FRTMIX1 Total:						300.00	0.00	70.00	0.00	230.00	0.00	
FRUITSRTR Fruit Sorter	PS&A	Finished Good	EACH	000		50.00	0.00	3.00	0.00	47.00	Cycle: C	75.000
Lot:						00051	0.00	1.00	0.00	46.00	0.00	
Item FRUITSRTR Total:						50.00	0.00	3.00	0.00	47.00	0.00	
Report Total:						350.00	0.00	73.00	0.00	277.00		

Lot/Serial Order Lookup

If you checked the Setup option to 'Add Lot/Serial Search to Sales Order Lookup,' a search button ('SRCH') will be added to the Sales Order Number List lookup.

Order...	Order Date	Type	Customer No	Bill To Name	PO Number
0000143	5/15/2010	S	02-ALLENAP	Allen's Appliance Repair	
0000149	5/23/2010	B	02-AMERCON	American Concrete Service	
0000152	5/11/2010	B	01-BRESLIN	Breslin Parts Supply	
0000153	5/11/2010	B	01-ABF	American Business Futures	XX-890200
0000156	5/15/2010	S	02-ATOZ	A To Z Carpet Supply	
0000157	5/15/2010	S	02-CUSTOM	Custom Craft Products	
0000158	5/15/2010	S	02-AUTOCR	Autocraft Accessories	
0000159	5/18/2010	S	02-GREALAR	Greater Alarm Company	
0000160	5/18/2010	S	01-RSSUPPL	R & S Supply Corp.	
0000161	5/14/2010	S	01-HILLSB	Hillsboro Service Center	
0000162	5/22/2010	S	02-AMERCON	American Concrete Service	
0000164	5/31/2010	S	02-ORANGE	Orange Door & Window Co.	55555
0000186	6/23/2010	B	01-RON	Raised on Naturals	
0000190	6/25/2010	S	01-LISA	Licensed Sales Inc	

Search: Order No. Begins with Find

Filters... Srch

Custom... Select Cancel

Found 21 records

When you click this button, a Lot/Serial Number entry window will pop up.

Lot/Serial Number

OK

Enter the Lot/Serial Number to search for and click 'OK'. A list of orders referencing this Lot/Serial Number will display. You can select Order Number from this list.

Lot/Serial Number	Item Number	Order Number	Order Date	Customer No	Order Total
060102	FRTMIX1	0000190	06/25/2010	01-LISA	1,478.97

Search: Lot/Serial Number Begins with Find

Filters... Custom... Select Cancel

Found 1 records

The search function is available in (but not limited to) the following places:

- Sales Order Entry
- Sales Order Inquiry
- Sales Order Copy From - Sales Order Number field (when copying from Sales Order) Invoice Entry - Sales Order Number field.

Custom Office User Defined Field Maintenance

A new data source, 'SO_InvoiceTierDistribution_bus;CopyFromSalesOrder', has been added to S/O Invoice Tier Distribution User Defined Fields. Use this data source to default user defined field values from S/O Order Tier Distribution file.

Integration with Bar Code Master S/O Invoice Import

This Extended Solution is integrated with the Bar Code module's S/O Invoice Import. The import will be aware of the lot/serial distributions made during Sales Order Entry. The import will accept the imported records and overwrite any existing Lot/Serial Distribution entries.

If an imported lot/serial number doesn't exist on the sales order, or the quantity distributed from a lot/serial number exceeds quantity distributed on the sales order, it will appear on an exception report, which lists the order number, item number, new lot/serial number and quantity.

NDC Company				
LOT SERIAL EXCEPTION REPORT				
Invoice No	Order No	Item No	Lot/Serial No	Quantity
0100263	0000422	2480-8-50	2002-11-08A	1.000

Helpful Hint

- Inventory Sort File rebuild will recalculate committed quantities based on the Lot/Serial quantities in sales orders when you answer 'Yes' to clear lot/serial quantities committed.

ODBC Dictionary

The files listed below have been added or changed in the ODBC Dictionaries by this Extended Solution for Crystal Reports purposes. Remember to Verify the Database before attempting to add the fields.

File:

SO_OrderTierDistribution_001

SO_InvoiceTierDistribution

SO_SalesOrderDetail

SO_SalesOrderWrk

SO_PickingSheetWrk

SO_OpenOrdersWrk

Field:

All Fields

QuantityOrdered_001

Valuation_001

LotSerialFullyDistributed_001

LotSerialNo_001

TierType_001

LotSerialQuantityOrdered_001

LotSerialNo_001

LotSerialQuantityOrdered_001

LotSerialNo_001

LotSerialQuantityOrdered_001

QuantityOnHand_001

Be aware that the ODBC Dictionaries may contain other files and data fields that will be unavailable without their corresponding Extended Solutions installed.

To print Lot/Serial Distributions on Sales Orders:

Go to Section Expert, create a new Detail Section and set up this suppression formula:

formula = {SO_SalesOrderWrk.LotSerialNo_001} = ""

In existing Detail Sections, include the following condition in the suppression formula:

{SO_SalesOrderWrk.LotSerialNo_001} <> ""

Exit Section Expert. Add LotSerialNo_001 and LotSerialQuantityOrdered_001 to the new Detail Section. Go to Record Sort Expert, add SO_SalesOrderWrk.LotSerialNo_001 to Sort Fields (after SO_SalesOrderWrk.LineSeqNo).

To print Lot/Serial Distributions on Picking Sheets:

Go to Section Expert, create a new Detail Section and set up this suppression formula:

formula = {SO_PickingSheetWrk.LotSerialNo_001} = ""

In existing Detail Sections, include the following condition in the suppression formula:

{SO_PickingSheetWrk.LotSerialNo_001} <> ""

Exit Section Expert. Add LotSerialNo_001 and LotSerialQuantityOrdered_001 to the new Detail Section. Go to Record Sort Expert, add SO_PickingSheetWrk.LotSerialNo_001 to Sort Fields (after SO_PickingSheetWrk.LotSerialSeqNo).

To print Lot/Serial Distributions on Open Sales Order Report:

Go to Section Expert, create a new Detail Section and set up this suppression formula:

formula = {@PrintSummaryReport} = "Y" or {SO_OpenOrdersWrk.LotSerialNo_001} = ""

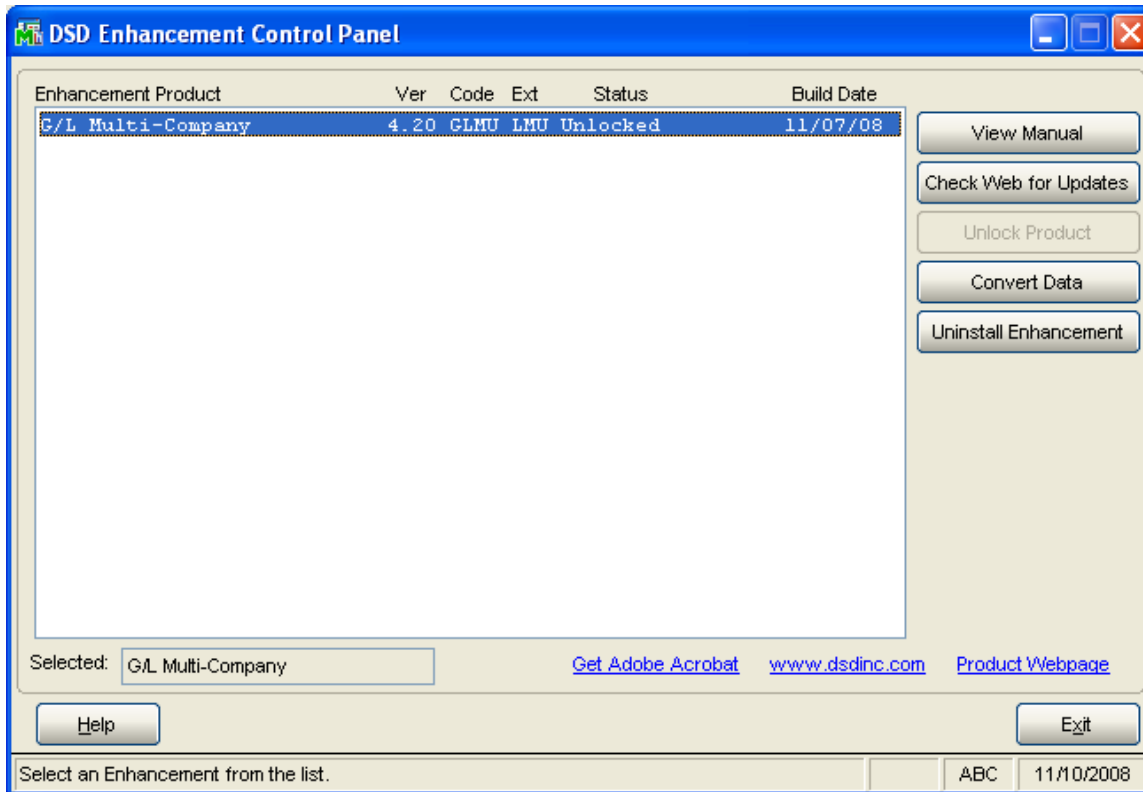
In existing Detail Sections, include the following condition in the suppression formula:

{SO_OpenOrdersWrk.LotSerialNo_001} <> ""

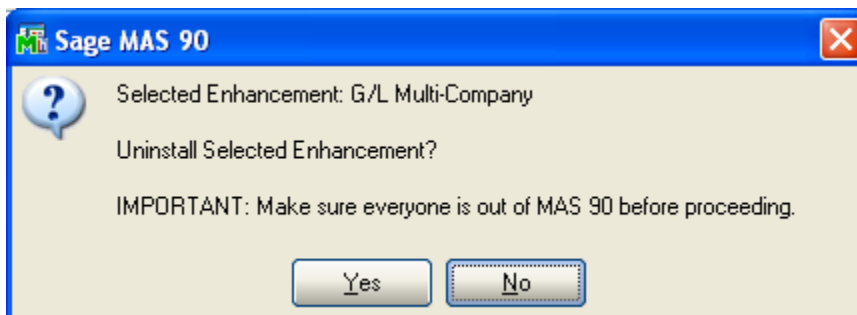
Exit Section Expert. Add LotSerialNo_001, LotSerialQuantityOrdered_001, and QuantityOnHand_001 to the new Detail Section.

Section E: Uninstall DSD Enhancements

A DSD Enhancements Uninstall Utility has been provided for the purposes of removing DSD Enhancements from your MAS 90/200 System. This utility may be accessed from the **DSD Enhancement Control Panel** menu option on the **Library Master / Utilities** menu.

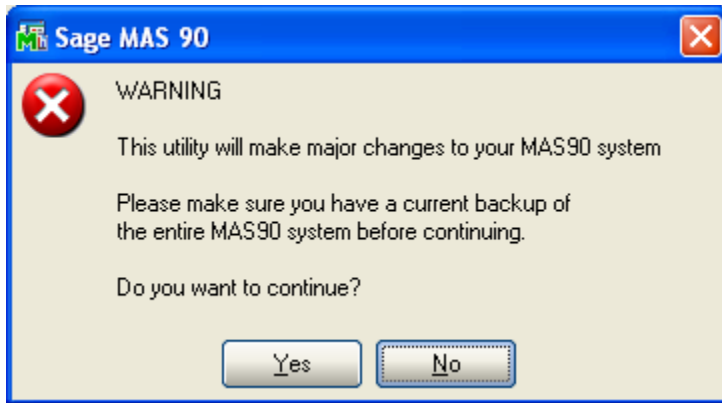


When accessing the **DSD Utility Suite**, select the enhancement that you wish to Uninstall, and then select the **Uninstall Enhancement** button. The following message box will appear:



Select **No** to exit the Uninstall Process.
Select **Yes** to continue with the Uninstall Process.

The following message box will appear, to remind you that a complete backup of your entire MAS90 system should be completed prior to uninstalling a DSD product.

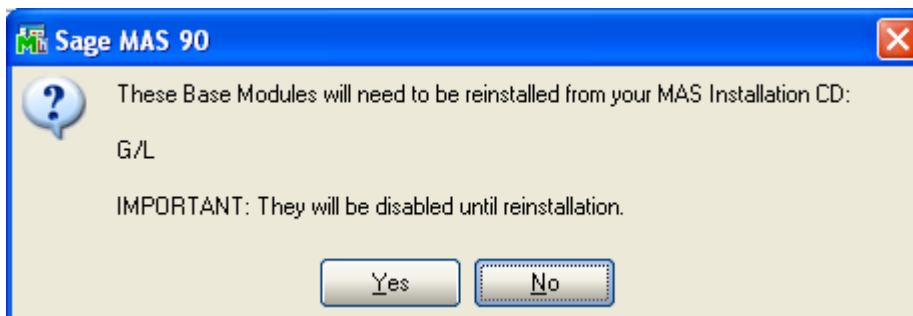


Select **No** to exit the Uninstall Process.

Select **Yes** to continue with the Uninstall Process.

After the Uninstall of the DSD Enhancement, you MUST reinstall certain standard MAS 90/200 modules, followed by reinstallation of MAS Service Packs / Updates, if applicable.

The following message box will appear, and will display which of those specific MAS 90/200 modules you must reinstall afterwards.



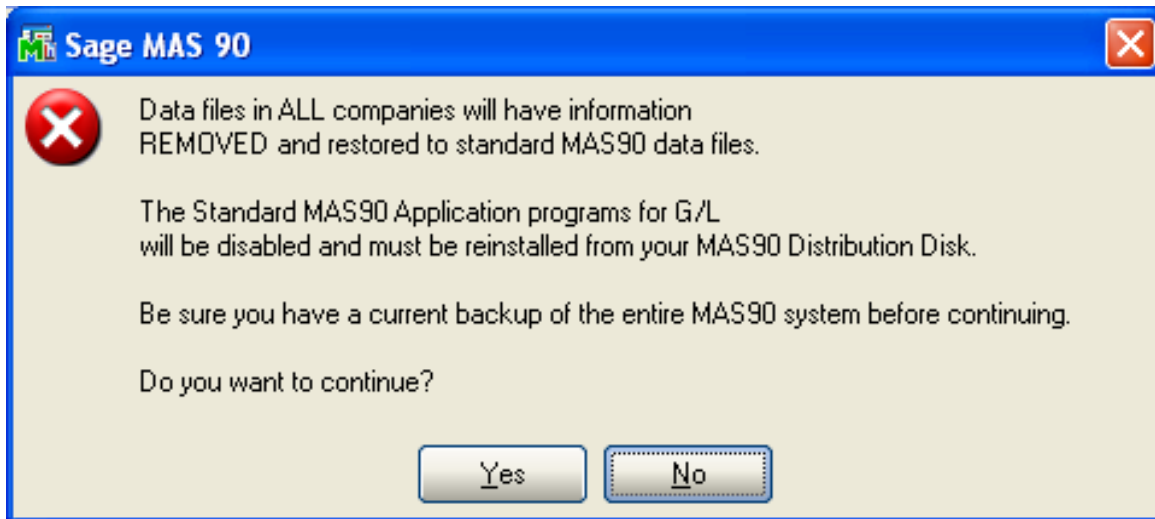
Select **No** to exit the Uninstall Process.

Select **Yes** to continue with the Uninstall Process.

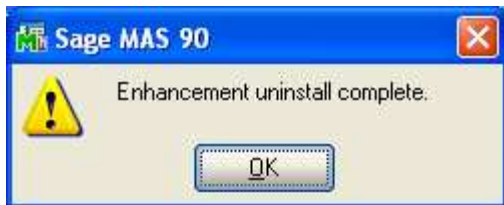
The following message box will appear, displaying the final warning message.

Select **No** to exit the Uninstall Process.

Select **Yes** to continue with the Uninstall Process. At this point, the DSD Enhancement will be removed from the MAS 90/200 system.



After completion of the Uninstall, the following message box will appear. Select OK to continue.



Now that the Uninstall process is completed, you must:

- Reinstall the applicable standard MAS 90/200 modules
- Reinstall the latest MAS 90/200 Service Pack/Updates, if applicable.
- Reinstall any other DSD Enhancements or Developer products that are affected from the reinstallation of the standard MAS 90/200 module(s).

License Agreement

IMPORTANT: THIS SOFTWARE IS LICENSED BY DSD BUSINESS SYSTEMS, INC. TO CUSTOMERS FOR THEIR USE ONLY IN ACCORDANCE WITH THE TERMS SET FORTH IN THIS CUSTOMER LICENSE AGREEMENT. OPENING OR USING THIS PACKAGE CONSTITUTES ACCEPTANCE OF THESE TERMS. IF THE TERMS OF THIS LICENSE ARE NOT ACCEPTABLE, THE CUSTOMER MAY OBTAIN A FULL REFUND OF ANY MONEY PAID IF THIS UNUSED, UNOPENED PACKAGE IS RETURNED WITHIN TEN (10) DAYS TO THE DEALER FROM WHICH IT WAS ACQUIRED.

1. **LICENSE. DSD BUSINESS SYSTEMS, INC.,** a California corporation as Licensor and owner hereby agrees to grant you as Licensee a non-exclusive license to use the enclosed software subject to the terms and restrictions set forth in this License Agreement. Title in and ownership of all programs and program enhancements or modifications written by DSD Business Systems, Inc. shall remain at all times vested in DSD Business Systems, Inc. The right granted by this Customer License Agreement and your payment of the non-refundable License fee is the right to use the Program in accordance with the terms of this Customer License Agreement. Delivery of a copy of the Program to you is made solely to enable you to exercise this right.
2. **COPYRIGHT.** This Program is copyrighted and all rights are reserved by DSD BUSINESS SYSTEMS, INC. and SAGE, INC. You may not copy or reproduce any part of the Program except to copy the Program for backup purposes. If you make a backup copy you must reproduce and include the copyright notice on it. The distribution of the product is intended for the use of the original Licensee only and for use only on the computer systems specified. Lawful users of this Program are hereby licensed only to read the Program from its medium into the memory of a computer only for the purpose of executing the program.

The documentation is also copyrighted and all rights are reserved. This document may not, in whole or in part, be copied, photocopied, reproduced, translated, transmitted or reduced to any electronic medium of machine readable form without prior consent, in writing, from DSD BUSINESS SYSTEMS, INC.

The Licensee recognizes that DSD BUSINESS SYSTEMS, INC. has expended considerable time, effort and money to develop the licensed Software and Manual and that DSD BUSINESS SYSTEMS, INC. will be substantially damaged by its unauthorized use, sale or distribution. In addition to recovery of all damages and the obtaining of injunctive relief as provided by law, in the event legal action must be taken to enforce this provision, the Licensee will pay DSD BUSINESS SYSTEMS, INC. all reasonable legal fees incurred in enforcing the rights of DSD BUSINESS SYSTEMS, INC. under this provision.

3. **RESTRICTIONS ON USE AND TRANSFER.** The original and any backup copies of the Program and its documentation are to be used only in connection with a single computer or network fileserver. You may physically transfer the Program from one computer to another, provided that the Program is used in connection with only one computer or network fileserver at a time. You may not distribute copies of the Program Documentation to others. The Program is to be used exclusively for business purposes and not for personal, family or household use. YOU MAY NOT USE, COPY, MODIFY, OR TRANSFER THE PROGRAM, IN WHOLE OR IN PART, EXCEPT AS EXPRESSLY PROVIDED FOR IN THIS LICENSE AGREEMENT. IN ADDITION YOU MAY NOT MODIFY, ADAPT, TRANSLATE, REVERSE ENGINEER, DECOMPILE, DISASSEMBLE THE PROGRAM, OR CREATE ANY DERIVATIVE WORK BASED UPON THE PROGRAM.
4. **WARRANTY.** DSD BUSINESS SYSTEMS, INC. software is licensed "as is" with no warranties of any kind, either expressed or implied, other than the following: DSD BUSINESS SYSTEMS will repair any bugs or flaws found in the software. Flaws of a critical nature which affect the basic functionality of the software will be repaired on an "emergency" basis, with a corrected distribution diskette sent via UPS Blue or equal. Flaws of a non-critical or cosmetic nature will be repaired on a timely basis, and a corrected distribution diskette sent via UPS ground or regular mail. All incidental or consequential damages that result from any defect in the software, even if DSD Business Systems, Inc. has been advised of the possibility of such damages will be assumed by you.

5. **LIMITED WARRANTY FOR DISKETTES.** To the original licensee only, DSD BUSINESS SYSTEMS, INC. warrants the magnetic diskette on which the Program is recorded to be free from defects in materials and faulty workmanship under normal use and service for a period of ninety days from the date the Program is delivered. Any implied warranties of merchantability and fitness for a particular purpose are limited in duration to the period of ninety (90) days from the date of delivery. If, during this 90 day period, a defect in the diskette should occur, the diskette may be returned DSD BUSINESS SYSTEMS, INC., 5120 Shoreham Place, Suite 280, San Diego, California, 92122, or to any authorized DSD BUSINESS SYSTEMS, INC. Dealer, and the diskette will be replaced without charge to you, provided that you have previously returned the Warranty Registration Card along with a copy of your sales receipt for the Program.
6. **NO OTHER WARRANTIES.** No dealer or distributor of DSD BUSINESS SYSTEMS, INC. products or any agent of DSD BUSINESS SYSTEMS, INC. is authorized to make any representation of warranty with respect to the Program except those expressly stated in the Customer License Agreement.
7. **LIMITATION OF LIABILITY.** Neither DSD BUSINESS SYSTEMS, INC. nor anyone else who has been involved in the creation, production or delivery of this program shall be liable for any direct, incidental or consequential damages.
8. **TERM.** This license is effective until terminated. You may terminate it at any time by returning the Program and Documentation together with all copies, modifications and merged portions in any form to DSD BUSINESS SYSTEMS, INC. The license will also be terminated by DSD BUSINESS SYSTEMS, INC. immediately and without notice if you fail to comply with any term or condition of this License Agreement.
9. **ACKNOWLEDGMENT.** Your opening this package, use of this program or signature on the warranty registration card acknowledges that you have read this customer license agreement and agree to its terms. You further agree that the license agreement is the complete and exclusive statement of the agreement between yourself and DSD BUSINESS SYSTEMS, INC. and supersedes any proposal or prior agreement, oral or written, and any other communications between yourself and DSD BUSINESS SYSTEMS, INC or dealers and distributors of DSD BUSINESS SYSTEMS, INC products relating to the subject matter of this agreement.
10. **ASSIGNMENT.** You may not sublicense this license or the Program. You may not rent this Program or the use of the Program. You may not transfer this copy of the Program unless the recipient agrees in writing (and a copy of such acceptance is sent to DSD BUSINESS SYSTEMS, INC., 5120 Shoreham Place, Suite 280, San Diego, California, 92122) to accept all of the terms of this Customer License Agreement. Any attempt by you to otherwise rent, sublicense, assign or transfer any of the rights, duties or obligation hereunder is void and may be the cause for immediate termination of the license. DSD BUSINESS SYSTEMS, INC. may assign any of its rights and obligation under this agreement to any party without notice to you.

Fax Transmittal Form

To:	<i>DSD Business Systems Customer Service</i>		Fax:	<i>858/550-4900</i>
From:	Name:		Phone:	
	Company:		Fax:	
Date:	/ /	# Pgs Including this Page:		
Subject:	Check One: <input type="checkbox"/> Product Problem <input type="checkbox"/> Suggestions			
Product:	<i>S175 Lot/Serial Distribution from Sales Order</i>		Version:	<i>4.40.PU2</i>

This page may be copied