



DSD Business Systems

Sage 100 Enhancements

S068

Kit Explosion to Convert Components to Items

SO-1068

Version 5.40



Information in this document is subject to change without notice.

Copyright 1993-2017, DSD Business Systems All rights reserved.

Kit Explosion to Convert Components to Items User's Manual
Version 5.40

2 February, 2017

DSD Business Systems
8787 Complex Drive
Suite 400
San Diego, CA 92123
858/550-5900 8:00am to 5:00pm PST
858/550-4900 Fax

Trademarks

ProvideX® is a Trademark of Sage Software.

Windows is a trademark of Microsoft Corporation.

Sage 100® is a registered trademark of Sage Software.

PXPlus® is a registered trademark of PVX Plus technologies

All other product names and brand names are service marks, and/or trademarks or registered trademarks of their respective companies.

This documentation and the software described herein, is prepared and published under license. Sage Software has not tested or verified either the software or any representation in this documentation regarding the software. Sage Software does not make any warranty with respect to either this documentation or the software described herein, and specifically disclaims any warranty, express or implied, with respect hereto, including the warranties of fitness for a particular purpose and merchantability.

Table of Contents

SECTION A: INTRODUCTION	5
WEB RESOURCES	5
SUPPORT	5
KIT EXPLOSION TO CONVERT COMPONENTS TO ITEMS FEATURES	6
SECTION B: GETTING STARTED	7
REQUIRED LEVELS	7
INSTALLATION	7
DSD ENHANCEMENT CONTROL PANEL	9
SECTION C: SETUP	11
SECTION D: SYSTEM OPERATIONS	13
DATA ENTRY PROCESSING	13
OPTIONAL EXPLOSION PROCESSING	13
BACK ORDER QUANTITIES NOT AVAILABLE	14
AUTO GENERATE ORDERS AND AUTO GENERATE INVOICES	14
SO-1119: GENERAL LEDGER ACCOUNT NUMBER OVERRIDE BY CODE.....	14
SO-1017: SALES ORDER LINE PRINTING SUPPRESSION BY UDF	14
SECTION E: UNINSTALL DSD ENHANCEMENTS	15

Section A: Introduction

This manual contains a description and instructions for this DSD product. Operating instructions are included for the features added by this product to Sage 100. For instructions on using Sage 100, refer to the appropriate Sage 100 manual, or call your Sage 100 reseller. DSD Business Systems offers excellent Sage 100 support, at an hourly rate.

Web Resources

DSD web site: <http://www.dsdinc.com>

The Enhancement page contains:

- Current Release Schedule*
- Purchasing Information*
- Installation Instructions*
- Product Support*
- Enhancement Links*

S068 Kit Explosion to Convert Components to Items:

<http://www.dsdinc.com/enhancement/kit-explosion-to-convert-components-to-items-2/>

The product web page contains:

- Product Description*
- Web Links*
- Current Product Version Table*
- Product Installation File Download*
- Product Manual in .pdf Format*
- Revision History*
- FAQ*

Support

DSD provides product support through Sage 100 resellers. Support is provided for the current version. Older versions are supported at an hourly rate. DSD's telephone number is **858-550-5900**. Fax: **858-550-4900**.

For a hard error, where the program displays an error dialog, report:

- Error number.*
- Program name.*
- Line number.*
- Program version.*

Exact sequence that caused the error, including menus and menu selections.

Other pertinent information.

If leaving a message or faxing, please include:

Your name.

Your phone number (and fax if applicable) and extension.

It is possible to be unable to duplicate a problem, because of data corruption or because we have not exactly duplicated a particular operating environment. In such circumstances, we can only continue to try to fix the problem if we can either access the system with Symantec PCAnywhere or by some other means access or duplicate the system.

Kit Explosion to Convert Components to Items Features

This DSD Extended Solution will change the way exploded Kits are processed in Sales Order and Sales Order Invoice Entry. The components become regular inventory lines while the kit line will either be deleted or will become: a special Item, a discounted item, a regular item or a non-discounted item depending on what you specify.

Additional functionality exists if Extended Solutions SO-1017: *Sales Order Line Print Suppression by UDF* or SO-1119: *General Ledger Account Number Override by Code* is installed.

Section B: Getting Started



- If you reinstall or upgrade one of the Sage 100 modules listed in the following table, you must also reinstall this Enhancement.

- Enhancements from different Sage Developers are generally not designed to work together. If installed together, problems are likely to occur.
- Check with DSD before installing more than one Enhancement.

Required Levels

Sage 100 Module	Module Required	Required Level
S/O	Y	5.40

Installation

1. **Back-up:** Exit all Sage 100 sessions. Back-up existing Sage 100 data.
2. **Check Levels:** Sage 100 module levels **must match** those listed above.
3. **Run Enhancement Setup Program:** Save the executable installation program (sent to you or downloaded from our website) in a convenient location on the Sage 100 server. Launch the program from Windows Explorer or by selecting Start/Run, and then browse for the file in the location you saved it. Follow on-screen instructions.
4. **Send your Sage Serial Number to your DSD Representative:** Send your Sage Serial Number to your DSD representative in order for us to send you back the encrypted keys to unlock your system. This serial number can be found in Library Master\Setup\System Configuration, Tab 3. Registration as Serial Number.
5. **Re-Start Sage 100:** Sage 100 will be updated.
6. **Unlock the Enhancement:** DSD Enhancements must be unlocked to run. When any part of the Enhancement is run for the first time, the **DSD Enhancement License Agreement and Activation** window will appear. Follow the steps shown on that window. *You can click the Help button for more detailed instructions.*

Note: On the next page is a screenshot of the DSD Enhancement License Agreement and Activation window.

After accepting the License Agreement, you can then select the type of unlocking that you'd prefer. The choices are File, Web, Demo and Manual Entry.

File Unlock: After receiving your encrypted serial number key file from DSD, and placing that file in the MAS90/SOA directory, selecting this option will unlock all products keys contained in the file. This means you can unlock all enhancements at once using this option.

Web Unlock: If the system that is running the DSD Enhancement *has web access* and you *have sent DSD your Sage Serial number*, you can unlock the Enhancement without assistance using Web Unlock. When this option is selected, the program will attempt to download encrypted serial number key file from DSD *and then proceed to unlock all enhancements contained in the file*.

- The Sage 100 system that is being used must have web access for this option to be effective.
- You can send your Sage Serial Number to your DSD Enhancements sales representative.

Demo Unlock: If a Demo mode is available for the Enhancement you're running, you will be able to Demo unlock the product without assistance from DSD for demo purposes.

- Creating a Demo Unlock is a good way to temporarily unlock DSD Enhancements off-hours, if you do not have web or email access. Later, you can unlock the product fully, during business hours.

Manual Entry Unlock: If you want to unlock a single enhancement using a single encrypted key, you can select this option and enter the 64 character key you receive from DSD by copy and paste.

Note: You can also unlock a DSD Enhancement through the **DSD Enhancement Control Panel** found on the Library Master Utilities Menu. Then, select the Enhancement with your mouse from the list of Enhancements and click the **Unlock Product** button on the right side of the window.

- Convert Data:** After unlocking, the DSD Conversion Wizard will appear. Follow on-screen instructions to complete data conversion. You can exit the conversion program without converting data. The Enhancement will not proceed, however, until data is converted. If you enter an enhanced program and data has not been converted, the conversion program will run again.

DSD Enhancement Control Panel

Starting with version 3.61, all DSD Enhancement products include DSD's Enhancement Control Panel. The **DSD Enhancement Control Panel** is accessed from the **Library Master Utilities** menu.

The DSD Enhancement Control Panel is a simple to use yet powerful system to help maintain DSD Enhancements installed on a Sage 100 system. To use it, select an Enhancement product from the list on the window and then click the button, on the right side of the window, which corresponds with the desired task.

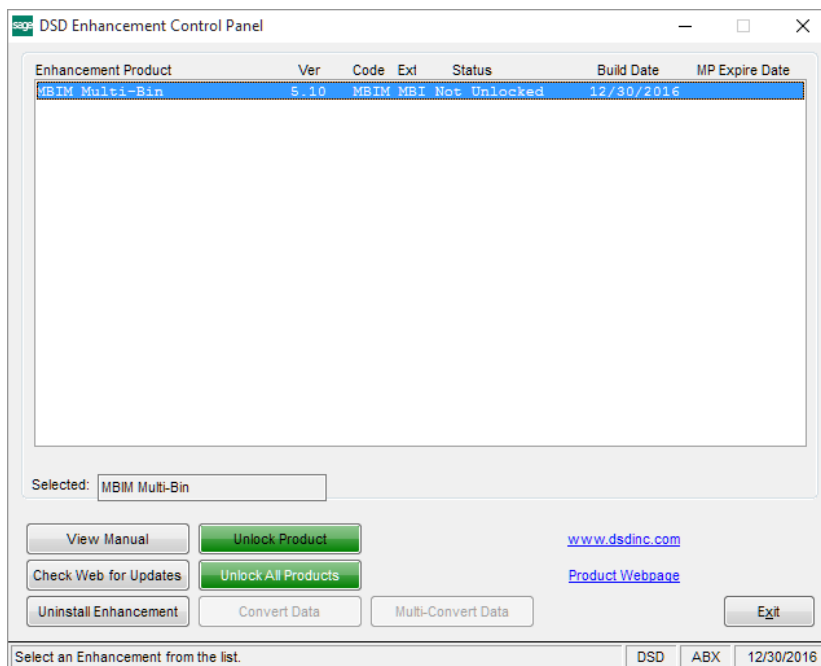
View Manual: This button will display the product manual for the selected Enhancement using Adobe Acrobat. For this to be possible, the PDF file for the corresponding manual must be in the "MAS90/PDF" folder in the Sage 100 system. If the file is not present, and the system has web access, the correct PDF file will be automatically downloaded from the DSD website, put into the "MAS90/PDF" folder and then displayed.

Check the Web for Updates: This button will check the DSD website to see what the current build is the selected Enhancement and alert the user if a later version is available. *This requires an internet connection on the Sage 100 system.*

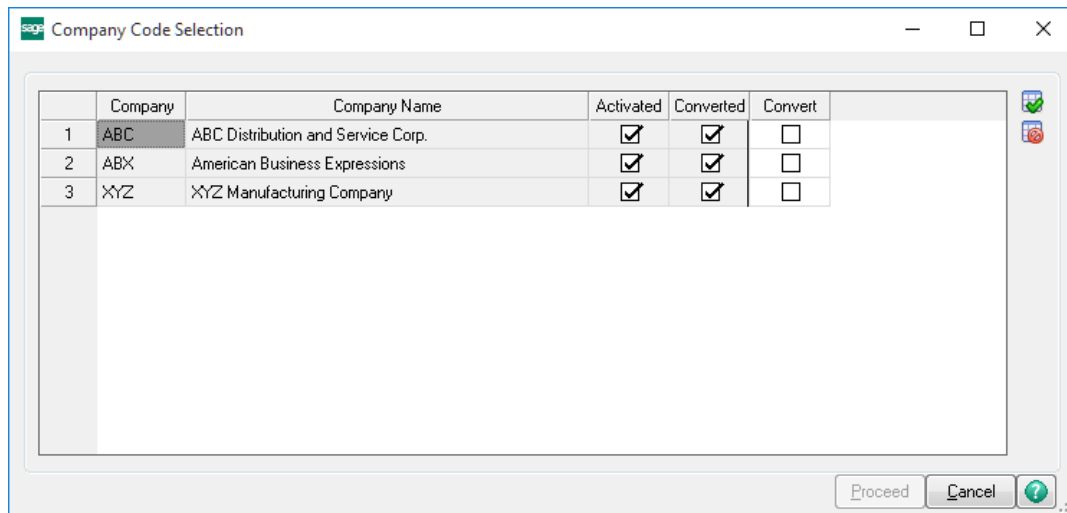
Unlock Product: This will cause the DSD Enhancement License Agreement and Activation window to appear. Using this window is described on the previous page. *This button is disabled if the selected Enhancement is already unlocked or if unlocking is not required.*

Unlock All Products: This will cause the DSD Enhancement All License Agreement and Activation window to appear. This window is similar to the one described on the previous page, but has only web and file as options to unlock. *This button is never disabled.*

Convert Data: After verification, the selected Enhancement's data conversion program will run. Data conversion is non-destructive, and may be triggered any number of times. Sometimes this is required to fix data records imported or updated from a non-enhancement installation.



Multi-Convert Data: Multiple Companies can be converted at the same time for a given Enhancement. *(If you have a large number of Companies to convert, please do in batches of 20 or fewer due to memory limitations.)*



Help: The Help button, located at the bottom right of the window, opens an HTML help file.

Get Adobe Acrobat: Opens the Adobe Acrobat website to the page where Acrobat can be downloaded and installed.

Uninstall Enhancement If this option is available, then selecting this button will start the un-install process, removing the enhancement from the system. (for more information see [Uninstall DSD Enhancements](#))

Section C: Setup

Upon completion of software installation, you will need to access the DSD Extended Solutions Setup from the Sales Order Setup menu. Select this part number and the Setup screen for this Extended Solution will appear. Check the 'Enable DSD Extended Solution' box to activate this Extended Solution.

SO-1068 Setup Options

SO-1068 Kit Explosion Convert

Enable DSD Extended ☒ Level 5.40

Kit Item Retention Method: Regular Item

Prompt for Optional Kit Explosion ☒

Default for Optional Kit Explosion Prompt ☒

Set Component Price as % of Kit ☐

Back Order Quantities Not Available ☒

Use B/M Print Components Option ☒

SO-1017 Default for Line Item Print Flag ☐

Accept Cancel

Check this box to enable SO-1068 Kit Explosion Convert

DSD XYZ 11/2/2016

Answer the following prompts:

Kit Item Retention Method: Select 'No Kit Item Retention', 'Special Item', 'Discounted Item', 'Non Discounted Item', or 'Regular Item'.

Prompt For Optional Kit Explosion: Check this box if you want the option to process kit explosion per standard Sage 100. Leave it unchecked to always process kit explosion by converting them to items.

Default Answer for Kit Explosion: This prompt is presented only if you checked the box for 'Prompt For Optional Kit Explosion' above. Check the box if you wish the default answer to be 'Yes'. Leave the box blank if you wish the default answer to be 'No'.

Set Component Price As % Of Kit: Check this box to calculate the Unit Price of each component as $\text{Kit Extension} \times (\text{Component Extension} / \text{Total Component Extension}) / (100 - \text{Line Discount Percent})$. If you click the 'Recalc Price' button, all prices will be reset per standard Sage 100.

Back Order Quantities Not Available: Check this box to Backorder component line quantities which are not available.

The following prompt will be presented if you have Sage Software Extended Solution SO-1017: *Sales Order Line Print Suppression by UDF* installed:

SO-1017 Default for Line Print Flag: Enter the default value for the 'Print Flag' for the converted component items.

You should visit this Setup screen after each upgrade or reinstallation of this Extended Solution.

Section D: System Operations

Data Entry Processing

During data entry when a kit item is 'exploded' resulting in the kit's component items being added to the order or invoice, the following processing changes take place:

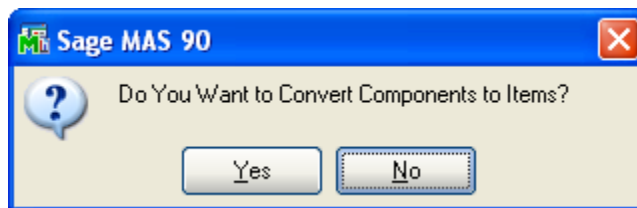
The Sales Kit Item Line is handled according to the Kit Item Retention method noted in Setup.

- **Retain Kit as Special Item:** A special item (* followed by the first fourteen characters of the Kit's Item Number) will be added to the Sales Order at the position where the Kit Item was deleted. The special item's description will consist of the Kit Item's description from the Inventory Masterfile. The Price and Cost fields will be set to zero.
- **Retain Kit as Discounted Item:** The Kit item will remain on the order after explosion, but 100% will be placed in the Line Item Discount field. This forces the Extended Amount to equal zero, but leaves the Unit Price value unchanged.
- **Retain Kit as Regular Item:** The Kit item will remain on the order/invoice with its Unit Price and Extended Price. Items that were once components will have their Unit Prices set to zero.
- **Retain Kit as Non Discounted Item:** The Kit item will remain on the order after explosion and no changes will be made to the discount field. The Unit Price and Extension will remain unchanged. Items that were once components will also have Unit Prices
- **No Kit Item Retention:** The Kit item will be removed from the Sales Order.

The original component items are no longer components lines of a sales kit, they are now standard Inventory items. During Sales Journal update every Inventory line's Sales Order Invoice value for 'Std/Kit Bill' will be copied to A/R Invoice History.

Optional Explosion Processing

If you checked 'Prompt for Optional Kit Explosion' in Setup screen, you will be presented with an additional prompt after answering Yes to the 'Do You Want To Convert Components To Items?' prompt. Answer 'Yes' to convert components to items, answer 'No' to use standard Sage 100 kit explosion processing.



Back Order Quantities Not Available

If you checked the 'Back Order Quantities Not Available' box in Setup, the Quantity Ordered will be compared to the Quantity Available in the warehouse on the line during the conversion of component items to inventory items. Insufficient quantities will be backordered.

Auto Generate Orders and Auto Generate Invoices

If you have elected to 'Set Component Price as % of Kit' in Setup and then process sales orders through either of these utilities, the standard logic which recalculates the line extensions will be overridden to prevent penny rounding issues with component lines. This is only in effect when the Quantity Ordered (Order Generation) or Quantity Shipped (Invoice Generation) is the same as the Quantity Ordered on the originating sales order during the generation process.

SO-1119: General Ledger Account Number Override by Code

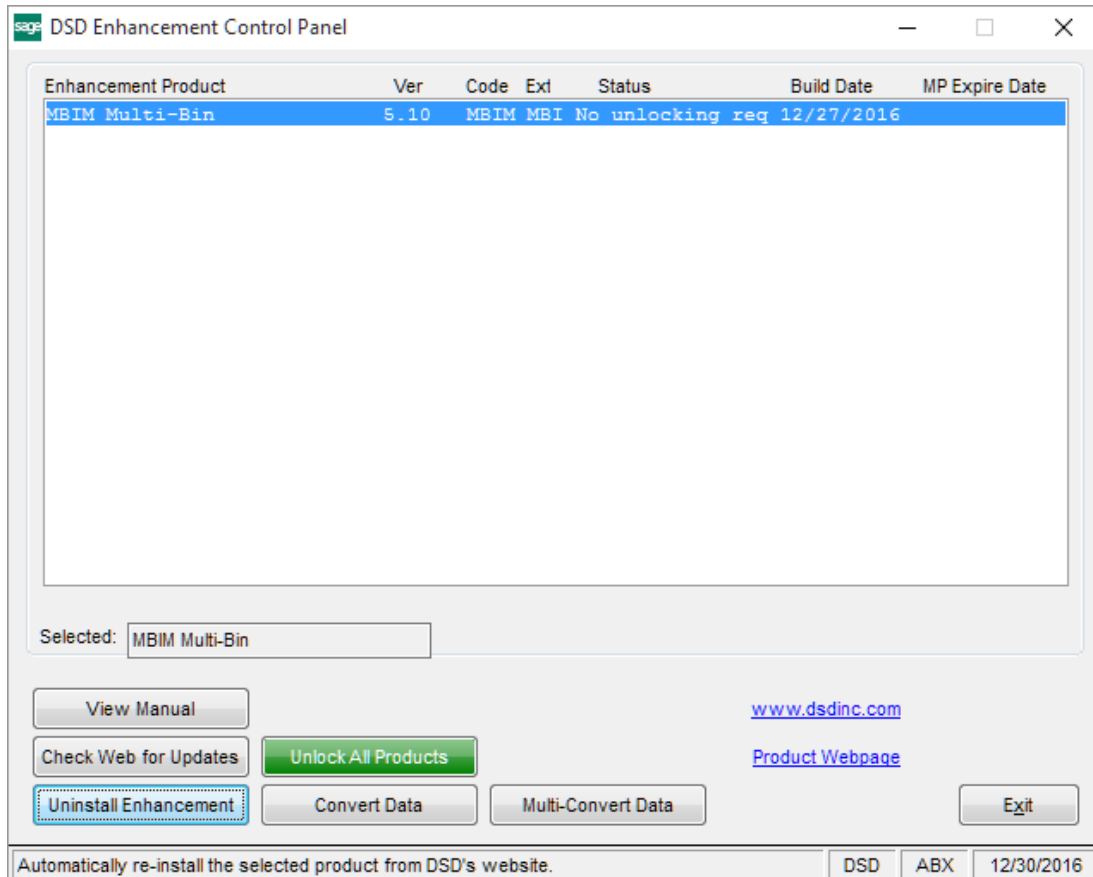
If this Extended Solution is installed and you elected to use the Header UDF for the Override code, component items converted to inventory items will have their G/L accounts overridden per SO-1119.

SO-1017: Sales Order Line Printing Suppression by UDF

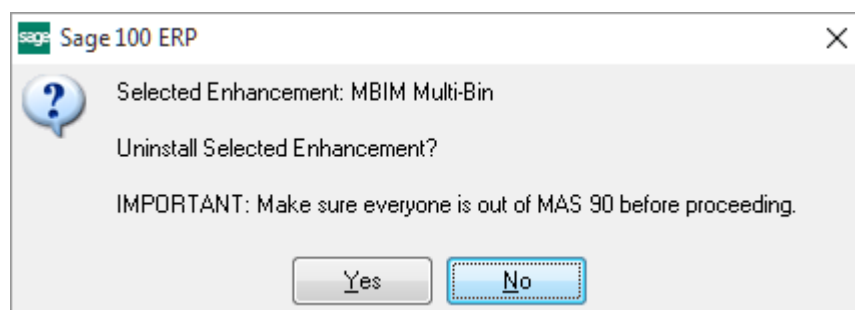
If this Extended Solution is installed then the SO-1017 Print UDF will be set to the value noted in this product's Setup. (See the SO-1017 manual for further information).

Section E: Uninstall DSD Enhancements

A DSD Enhancements Uninstall Utility has been provided for the purposes of removing DSD Enhancements from your Sage 100 System. This utility may be accessed from the **DSD Enhancement Control Panel** menu option on the **Library Master / Utilities** menu.



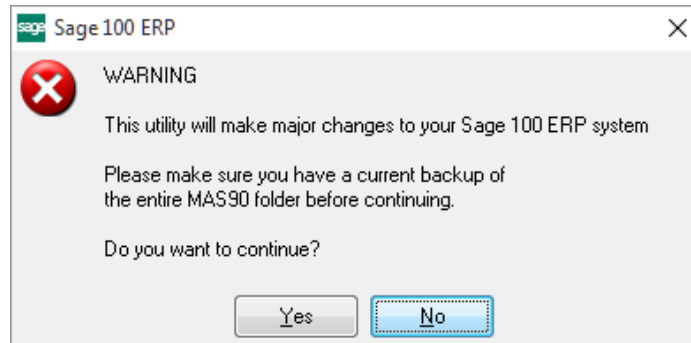
When accessing the **DSD Enhancement Control**, select the enhancement that you wish to Uninstall, and then select the **Uninstall Enhancement** button. The following message box will appear:



Select **No** to exit the Uninstall Process.

Select **Yes** to continue with the Uninstall Process.

The following message box will appear, to remind you that a complete backup of your entire Sage 100 system should be completed prior to uninstalling a DSD product.



Select **No** to exit the Uninstall Process.

Select **Yes** to continue with the Uninstall Process.

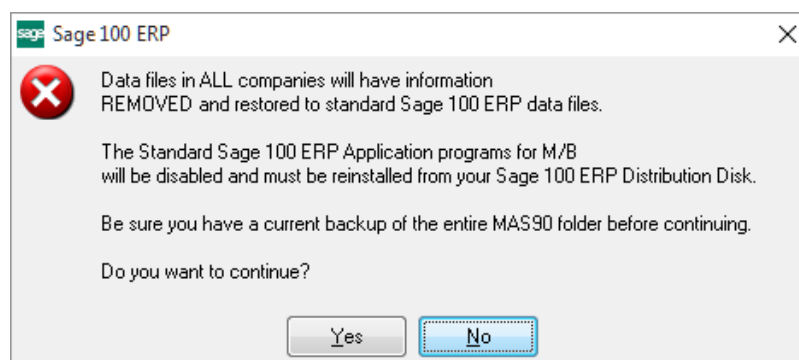
After the Uninstall of the DSD Enhancement, you MUST reinstall certain standard Sage 100 modules, followed by reinstallation of Product Updates and Hot Fixes, if applicable.

A message box will appear, and will display which of those specific Sage 100 modules you must reinstall afterwards.

Select **No** to exit the Uninstall Process.

Select **Yes** to continue with the Uninstall Process.

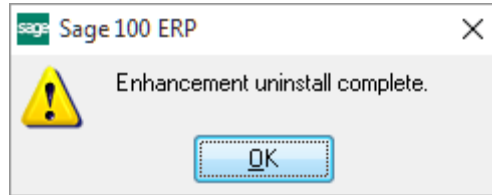
The following message box will appear, displaying the final warning message.



Select **No** to exit the Uninstall Process.

Select **Yes** to continue with the Uninstall Process. At this point, the DSD Enhancement will be removed from the Sage 100 system.

After completion of the Uninstall, the following message box will appear. Select OK to continue.



Now that the Uninstall process is completed, you must:

- Reinstall the applicable standard Sage 100 modules
- Reinstall the latest Sage 100 Service Pack/Updates, if applicable.
- Reinstall any other DSD Enhancements or Developer products that are affected from the reinstallation of the standard Sage 100 module(s).