



# DSD Business Systems

**Sage 100 Enhancements**

**RAMC**

**RMA Multi-Currency**

**Version 6.00**



Information in this document is subject to change without notice.

Copyright 1993-2018, DSD Business Systems All rights reserved.

RMA Multi-Currency User's Manual  
Version 6.00

9 March, 2018

DSD Business Systems  
5120 Shoreham Place  
Suite 280  
San Diego, CA 92122  
858/550-5900 8:00am to 5:00pm PST  
858/550-4900 Fax

### **Trademarks**

**ProvideX**® is a Trademark of Sage Software.

**Windows** is a trademark of Microsoft Corporation.

**Sage 100**® is a registered trademark of Sage Software.

**PXPlus**® is a registered trademark of PVX Plus technologies

All other product names and brand names are service marks, and/or trademarks or registered trademarks of their respective companies.

This documentation and the software described herein, is prepared and published under license. Sage Software has not tested or verified either the software or any representation in this documentation regarding the software. Sage Software does not make any warranty with respect to either this documentation or the software described herein, and specifically disclaims any warranty, express or implied, with respect hereto, including the warranties of fitness for a particular purpose and merchantability.



## Table of Contents

<b>SECTION A: INTRODUCTION</b>	<b>6</b>
WEB RESOURCES .....	6
SUPPORT .....	6
HOW THE MULTI-CURRENCY R/A MODULE WORKS .....	8
RMA MULTI-CURRENCY FEATURES .....	8
REPORTS .....	8
<b>SECTION B: GETTING STARTED</b>	<b>9</b>
REQUIRED LEVELS .....	9
INSTALLATION .....	9
DSD ENHANCEMENT CONTROL PANEL .....	11
<b>SECTION C: SETUP</b>	<b>13</b>
INITIAL SET-UP .....	13
CONVERSION NOTES .....	13
MULTI-CURRENCY RMA PROCESSING SETUP .....	13
<b>SECTION D: SYSTEM OPERATIONS</b>	<b>14</b>
RMA DATA ENTRY .....	14
RMA Line Entry .....	15
Item Price Precedence .....	15
Restocking Charges .....	16
Original Invoice History Item Cost .....	16
Xpress Sales Order .....	16
CUSTOMER RMA PRINTING AND RECEIVER PRINTING .....	17
RMA RECEIPTS ENTRY .....	17
RMA Receipts Line Entry .....	18
Item Price Precedence .....	18
Restocking Charges .....	19
Original Invoice History Item Cost .....	19
GENERATE TRANSACTIONS .....	20
GENERATE TRANSACTIONS LISTING .....	20
RMA INQUIRY .....	21
<b>SECTION E: REPORTS</b>	<b>22</b>
OPEN RMA REPORT AND RMA RECEIPT HISTORY REPORT .....	22
<b>SECTION F: UNINSTALL DSD ENHANCEMENTS</b>	<b>23</b>
<b>LICENSE AGREEMENT</b>	<b>26</b>



## Section A: Introduction

---

This manual contains a description and instructions for this DSD product. Operating instructions are included for the features added by this product to Sage 100. For instructions on using Sage 100, refer to the appropriate Sage 100 manual, or call your Sage 100 reseller. DSD Business Systems offers excellent Sage 100 support, at an hourly rate.

### Web Resources

DSD web site: <http://www.dsdinc.com>

The Enhancement page contains:

- Current Release Schedule*
- Purchasing Information*
- Installation Instructions*
- Product Support*
- Enhancement Links*

RAMC RMA Multi-Currency:

<http://www.dsdinc.com/enhancement/rma-multi-currency-4/>

The product web page contains:

- Product Description*
- Web Links*
- Current Product Version Table*
- Product Installation File Download*
- Product Manual in .pdf Format*
- Revision History*
- FAQ*

### Support

DSD provides product support through Sage 100 resellers. Support is provided for the current version. Older versions are supported at an hourly rate. DSD's telephone number is **858-550-5900**. Fax: **858-550-4900**.

For a hard error, where the program displays an error dialog, report:

- Error number.*
- Program name.*
- Line number.*
- Program version.*
- Exact sequence that caused the error, including menus and menu selections.*

*Other pertinent information.*

If leaving a message or faxing, please include:

*Your name.*

*Your phone number (and fax if applicable) and extension.*

It is possible to be unable to duplicate a problem, because of data corruption or because we have not exactly duplicated a particular operating environment. In such circumstances, we can only continue to try to fix the problem if we can either access the system with Symantec PCAnywhere or by some other means access or duplicate the system.

### ***How the Multi-Currency R/A Module Works***

The **Multi-Currency RMA Processing** enhancement provides the Sage 100 user with the ability to generate RMAs and Receipts in different currencies. The Generate Transactions feature allows creation of Sales Orders and Credit Memos in the RMA Currency and Purchase Orders and PO Returns in the Vendor Currency. Foreign Prices and Levels setup in the Inventory Management module may be used. Reports may be printed in Entry or Base Currency.

### ***RMA Multi-Currency Features***

- **Enter Transactions in Any Currency:** You may enter RMAs and Receipts in any currency. The A/R Invoice History transactions that are chosen for returns must be in the RMA transaction currency.
- **Enter Transactions using Any Exchange Rate:** You may use the Currency Exchange Rate as of the transaction date or you may override the Exchange Rate.
- **Customer Price Levels by Customer by Currency:** You may use the Customer Price Levels by Currency that were set up in the Multi-Currency Inventory Management module when creating Sales Orders and Credit Memos.
- **Vendor Price Levels by Vendor by Currency:** You may use the Vendor Cost Levels by Currency that were set up in the Multi-Currency Inventory Management module when creating Purchase Orders and Returns for the assigned Vendor.
- **Print Reports in Base Or Entry Currency:** Print any report in Base or Entry Currency.

### ***Reports***

These reports are modified for the **Multi-Currency RMA Processing** module:

- Open RMA Report
- RMA Receipts History Report
- Customer RMA Printing
- RMA Receiver Printing
- Generate Transactions Listing



## Section B: Getting Started

### CAUTION

- **If you reinstall or upgrade one of the Sage 100 modules listed in the following table, you must also reinstall this Enhancement.**
- Enhancements from different Sage Developers are generally not designed to work together. If installed together, problems are likely to occur.
- **Check with DSD before installing more than one Enhancement.**

### Required Levels

Sage 100 Module	Module Required	Required Level
R/A	Y	6.00
SOMC	Y	6.00
ARMC	Y	6.00
CUMC	Y	6.00
IMMC	N	6.00
POMC	If PO is installed	6.00
APMC	If AP is installed	6.00

### Installation

1. **Back-up:** Exit all Sage 100 sessions. Back-up existing Sage 100 data.
2. **Check Levels:** Sage 100 module levels **must match** those listed above.
3. **Run Enhancement Setup Program:** Save the executable installation program (sent to you or downloaded from our website) in a convenient location on the Sage 100 server. Launch the program from Windows Explorer or by selecting Start/Run, and then browse for the file in the location you saved it. Follow on-screen instructions.
4. **Send your Sage Serial Number to your DSD Representative:** Send your Sage Serial Number to your DSD representative in order for us to send you back the encrypted keys to unlock your system. This serial number can be found in Library Master\Setup\System Configuration, Tab 3. Registration as Serial Number.
5. **Re-Start Sage 100:** Sage 100 will be updated.
6. **Unlock the Enhancement:** DSD Enhancements must be unlocked to run. When any part of the Enhancement is run for the first time, the **DSD Enhancement License Agreement and Activation** window will appear. Follow the steps shown on that window. *You can click the Help button for more detailed instructions.*

**Note:** On the next page is a screenshot of the DSD Enhancement License Agreement and Activation window.

After accepting the License Agreement, you can then select the type of unlocking that you'd prefer. The choices are File, Web, Demo and Manual Entry.

**File Unlock:** After receiving your encrypted serial number key file from DSD, and placing that file in the MAS90/SOA directory, selecting this option will unlock all products keys contained in the file. This means you can unlock all enhancements at once using this option.

**Web Unlock:** If the system that is running the DSD Enhancement *has web access* and you *have sent DSD your Sage Serial number*, you can unlock the Enhancement without assistance using Web Unlock. When this option is selected, the program will attempt to download encrypted serial number key file from DSD *and then proceed to unlock all enhancements contained in the file*.

- *The Sage 100 system that is being used must have web access for this option to be effective.*
- *You can send your Sage Serial Number to your DSD Enhancements sales representative.*

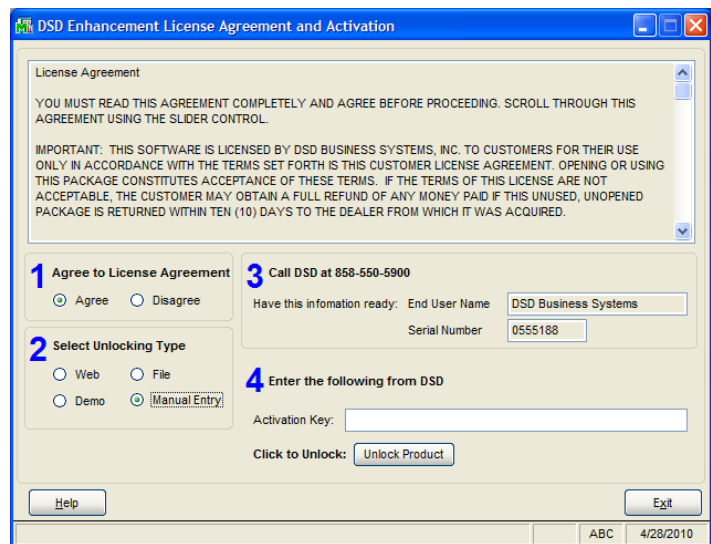
**Demo Unlock:** If a Demo mode is available for the Enhancement you're running, you will be able to Demo unlock the product without assistance from DSD for demo purposes.

- *Creating a Demo Unlock is a good way to temporarily unlock DSD Enhancements off-hours, if you do not have web or email access. Later, you can unlock the product fully, during business hours.*

**Manual Entry Unlock:** If you want to unlock a single enhancement using a single encrypted key, you can select this option and enter the 64 character key you receive from DSD by copy and paste.

**Note:** *You can also unlock a DSD Enhancement through the **DSD Enhancement Control Panel** found on the Library Master Utilities Menu. Then, select the Enhancement with your mouse from the list of Enhancements and click the **Unlock Product** button on the right side of the window.*

- Convert Data:** After registration, the Data Conversion window will appear. Follow on-screen instructions to complete data conversion. *You can exit the conversion program without converting data. The Enhancement will not proceed, however, until data is converted. If you enter an enhanced program and data has not been converted, the conversion program will run again.*



### DSD Enhancement Control Panel

Starting with version 3.61, all DSD Enhancement products include DSD's Enhancement Control Panel. The **DSD Enhancement Control Panel is accessed from the Library Master Utilities menu.**

The DSD Enhancement Control Panel is a simple to use yet powerful system to help maintain DSD Enhancements installed on a Sage 100 system. To use it, select an Enhancement product from the list on the window and then click the button, on the right side of the window, which corresponds with the desired task.

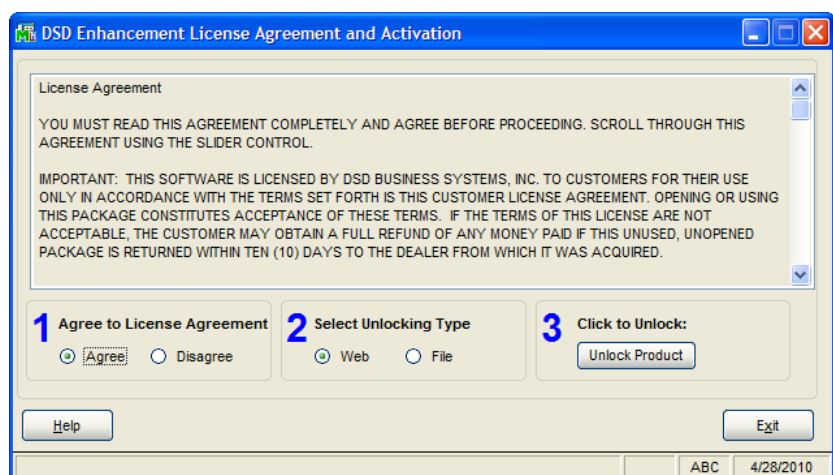
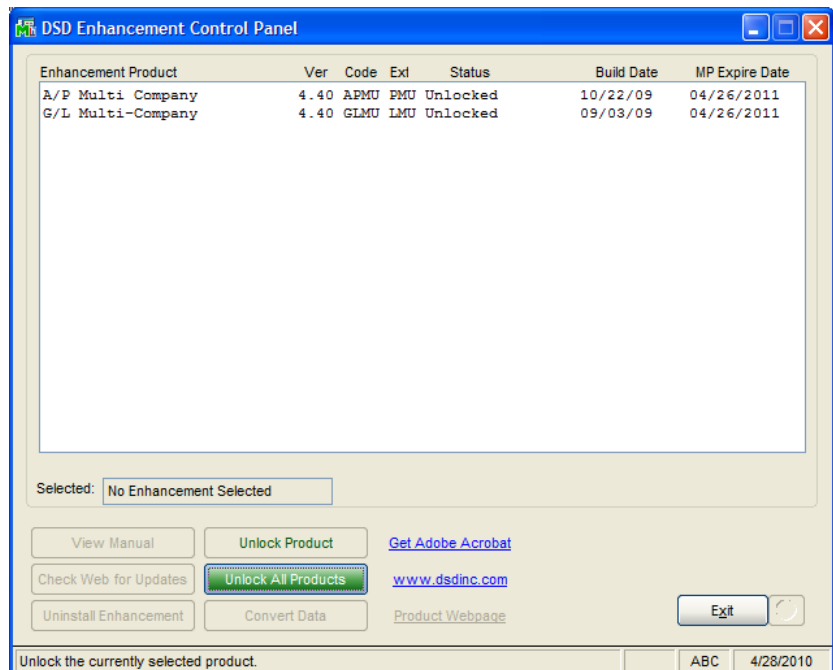
**View Manual:** This button will display the product manual for the selected Enhancement using Adobe Acrobat. For this to be possible, the PDF file for the corresponding manual must be in the "MAS90/PDF" folder in the Sage 100 system. If the file is not present, and the system has web access, the correct PDF file will be automatically downloaded from the DSD website, put into the "MAS90/PDF" folder and then displayed.

**Check the Web for Updates:** This button will check the DSD website to see what the current build is the selected Enhancement and alert the user if a later version is available. *This requires an FTP web connection on the Sage 100 system.*

**Unlock Product:** This will cause the DSD Enhancement License Agreement and Activation window to appear. Using this window is described on the previous page. *This button is disabled if the selected Enhancement is already unlocked.*

**Unlock All Products:** This will cause the DSD Enhancement All License Agreement and Activation window to appear. This window is similar to the one described on the previous page, but has only web and file as options to unlock. *This button is never disabled.*

**Convert Data:** After verification, the selected Enhancements data conversion program will run. Data conversion is non-destructive, and may be triggered any number of times. Sometimes this is required to fix data records imported or updated from a non-enhancement installation.



**Help:** The Help button, located at the bottom right of the window, opens an HTML help file .

**Get Adobe Acrobat:** Opens the Adobe Acrobat website to the page where Acrobat can be downloaded and installed.

**Uninstall Enhancement** If this option is available, then selecting this button will start the un-install process, removing the enhancement from the system.

There are also links to the DSD website and the Enhancement page on that site.

## Section C: Setup

### Initial Set-up

After data conversion, set-up IMMC. See other parts of this section for detail.

1. Set-up Foreign Price / Cost (if applicable).
2. Set-up Foreign Price Breaks (if applicable).

### Conversion Notes

The system will designate the following values for each transaction converted from an existing Sage 100 System:

1. Transaction Currency = Base Currency
2. Entry Date = Transaction Date
3. Entry Rate = 1
4. Entry Amount = Original Transaction Amount

**Important:** Follow the Multi-Currency Startup process for each module installed before entering Multi-Currency transactions.

### Multi-Currency RMA Processing Setup

#### Data You Need

The SOMC and ARMC enhancements are required for use of the RAMC enhancement. There is no additional setup required other than making sure these modules are properly installed.

A new **Currency Button** has been added to all Multi-Currency related screen prompts. Select this button access the new Multi-Currency fields via a pop-up panel.

Most screens have been modified to display on the bottom of the screen the Currency of amounts being displayed or entered.

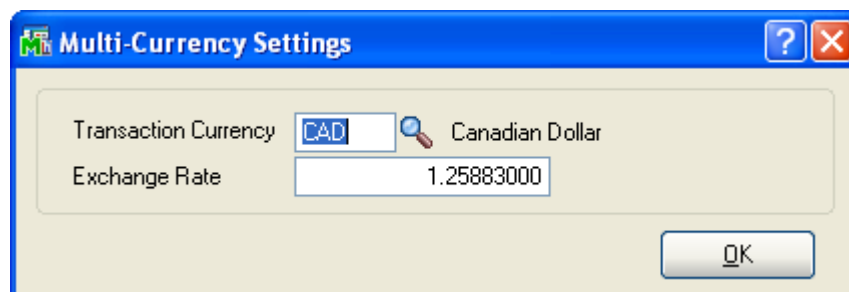
## Section D: System Operations

### RMA Data Entry

The RMA Data Entry program has been enhanced to allow the entry of RMAs in Foreign Currencies using the appropriate Exchange Rate.

When a new RMA is entered, the system displays the Customer's Default Entry Currency at the bottom of the panel. This is the currency for all amounts entered in the selected RMA. The RMA Exchange Rate will be the Exchange Rate as of the RMA date.

The RMA Entry Header Panel has been modified to include a new **Currency Button**. Select this button to access the **Multi-Currency Settings** screen:



**Transaction Currency:** Enter the Transaction Currency Code for the RMA. Select the Lookup Button to list all Currency Codes on file. The system will ask you for the Supervisor Password if one was set up in General Ledger.

If line entries have already been entered for an RMA, then the currency may NOT be changed until those lines items are first removed.

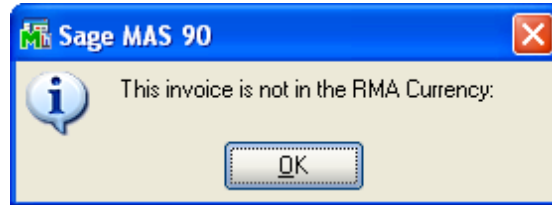
This field will not be accessible if the **Allow Currency Change** flag is not checked for the Customer in Customer Maintenance.

**Exchange Rate:** Enter the Exchange Rate for the RMA. The rate will default to the exchange rate found in Currency Code Maintenance for the RMA Date. If the default exchange rate is overridden, then the RMA amounts that were entered will remain the same.

The system will ask you for the Supervisor Password if one was set up in General Ledger. This field will not be accessible if the **Allow Rate Change** flag is not checked for the Customer in Customer Maintenance.

### ***RMA Line Entry***

When selecting an Invoice History record at the Lines panel, the system will detect if that record is in the same currency as the RMA. If it is NOT, then the system will display the following message and will NOT select the record.



If you wish to select that specific invoice, then you will have to change the RMA Currency to be that currency before selection. Therefore, only Invoice History records in the RMA Currency may be selected.

The RMA Line Entry programs have been enhanced to calculate and display the Item Prices in the RMA Entry Currency.

You may use Foreign Prices and Foreign Price Levels as established through the Multi-Currency Inventory Module.

NOTE: The IMMC module is not required, but is needed to use Foreign Pricing.

### ***Item Price Precedence***

The system will consider the following order to determine the correct Item Price:

1. Foreign Price + Customer + Price Level
2. Foreign Price + Price Level
3. Foreign Price
4. Base Currency Price + Customer + Price Level
5. Base Currency Price + Price Level
6. Base Currency Price

For cases 4, 5 and 6 the system will calculate the Foreign Price by converting the Base Currency Price using the RMA Exchange Rate.

The Sales Price is calculated as follows:

When the Sales Promotion Discount Method is **Sales Price**, the system will display the Base Currency Sales Price for RMAs in Base Currency.

For RMAs in a Foreign Currency where a Foreign Price is set up, the Base Currency Sales Price will be displayed but will not be used.

For RMAs in a Foreign Currency where a Foreign Price is not set up, the Foreign Sales Price will be displayed. This price will be calculated by multiplying the Base Currency Sale Price multiplied by the RMA Exchange Rate.

When the Sales Promotion Discount Method is **Price Discount**, the system will calculate the Base Currency or Foreign Sales Price by applying the percentage discount to the Base Currency or Foreign Price.

**NOTE:** Please refer to the *Multi-Currency Inventory Management module for an explanation of Foreign Prices and Levels.*

### ***Restocking Charges***

Restocking Charges that are setup in Inventory Maintenance will be recalculated using the exchange rate of the RMA Currency. For example, if you use a Fixed Restocking Charge Method and the Charge is \$10.00 (in Base Currency) and the RMA Exchange Rate is 1.555, then the Restocking Charge that is calculated on the RMA transaction is \$15.55.

### ***Original Invoice History Item Cost***

When selecting an item from A/R Invoice History, the original Base Currency Unit Cost is transferred from the Invoice History Detail record to the RMA Detail record. When creating S/O Credit Memos from that RMA transaction, the Base Currency Unit Cost from the RMA transaction is then transferred to the Credit Memo. When that Credit Memo is posted in the Sales Order module, that Base Currency Unit Cost is used when posting to the General Ledger and Inventory. This is important since the system should “back out” the item cost with the same cost amount.

On the third panel in RMA Options, Entry Options, there is a checkbox called “Allow Cost Override.” This allows the user to change the unit cost for that item during RMA Data Entry and RMA Receipts Entry. **IMPORTANT: Since RMA DATA Entry displays and maintains the Unit Cost in RMA Currency, if the user decided to change that unit cost, then the Base Unit Cost will be recalculated to an amount that is different than the original unit cost. This change has obvious implications when the SO Credit Memo posts back to the General Ledger and Inventory modules since it will no longer “back out” the item cost with the same cost amount. Please be aware of this!**

### ***Xpress Sales Order***

“Xpress Sales Orders” that are created from RMA Data Entry for cross shipments will be created in The RMA Currency using the RMA Exchange Rate.



**Customer RMA Printing and Receiver Printing**

The Customer RMA Printing and Receiver Printing programs have been modified to have additional currency fields available to print:

- RAMC\_234\_EntryCurrency – Entry Currency Code for each entry
- RAMC\_234\_StringRate – The Exchange Rate for each entry
- RAMC\_234\_CurrencyName – The name of the Entry Currency
- RAMC\_234\_CurrencySymbol – The Currency Symbol of the Entry Currency

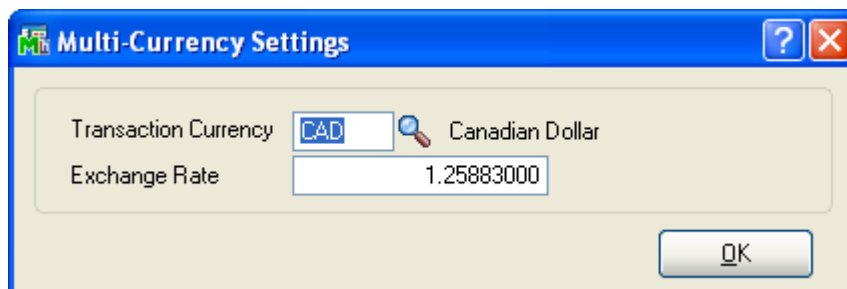
If you do not see this new field during the edit of the Crystal form, then select **Verify Database** from the **Database** dropdown menu to update your data dictionaries.

**RMA Receipts Entry**

The RMA Receipts Entry program has been modified to allow the entry of RMA Receipts in Foreign Currencies using the appropriate Exchange Rate. When a receipt is entered that makes reference to an RMA already entered in RMA Data Entry, then the Transaction Currency of the RMA will be used and may NOT be modified. The Receipt Exchange Rate will be recalculated to the Exchange Rate as of the Receipt date.

When a Receipt entered does not make reference to an existing RMA, then the system displays the Customer's Default Entry Currency at the bottom of the screen. This is the currency for all amounts entered. The Receipt Exchange Rate will be the Exchange Rate as of the Receipt date.

The RMA Receipts Entry Header Panel has been modified to include a new **Currency Button**. Select this button to access the **Multi-Currency Settings** window:



**Transaction Currency:** Enter the Transaction Currency Code for the RMA Receipt. Select the Lookup Button to list all Currency Codes on file. The system will ask you for the Supervisor Password if one was set up in General Ledger.

If line entries have already been entered for an RMA Receipt, then the currency may NOT be changed until those lines items are first removed.

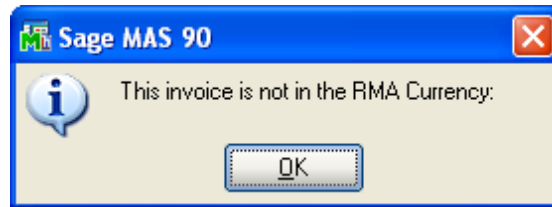
This field will not be accessible if the **Allow Currency Change** flag is not checked for the Customer in Customer Maintenance.

**Exchange Rate:** Enter the Exchange Rate for the RMA Receipt. The rate will default to the exchange rate found in Currency Code Maintenance for the RMA Receipt Date. If the default exchange rate is overridden, then the RMA Receipts amounts that were entered will remain the same.

The system will ask you for the Supervisor Password if one was set up in General Ledger. This field will not be accessible if the **Allow Rate Change** flag is not checked for the Customer in Customer Maintenance.

### ***RMA Receipts Line Entry***

When selecting an Invoice History record at the Lines panel, the system will detect if that record is in the same currency as the RMA Receipt. If it is NOT, then the system will display the following message and will NOT select the record.



If you wish to select that specific invoice, then you will have to change the RMA Currency to be that currency before selection. Therefore, only Invoice History records in the RMA Currency may be selected.

The RMA Receipts Line Entry programs have been enhanced to calculate and display the Item Prices in the RMA Receipts Entry Currency.

You may use Foreign Prices and Foreign Price Levels as established through the Multi-Currency Inventory Module.

NOTE: The IMMC module is not required, but is needed to use Foreign Pricing.

NOTE: If you are doing a receipt from an RMA that was already entered in RMA Data Entry, then all pricing will be taken from the original RMA.

### ***Item Price Precedence***

The system will consider the following order to determine the correct Item Price:

1. Foreign Price + Customer + Price Level
2. Foreign Price + Price Level
3. Foreign Price
4. Base Currency Price + Customer + Price Level
5. Base Currency Price + Price Level
6. Base Currency Price

For cases 4, 5 and 6 the system will calculate the Foreign Price by converting the Base Currency Price using the RMA Receipts Exchange Rate.

The Sales Price is calculated as follows:

When the Sales Promotion Discount Method is **Sales Price**, the system will display the Base Currency Sales Price for RMAs in Base Currency.

For RMAs in a Foreign Currency where a Foreign Price is set up, the Base Currency Sales Price will be displayed but will not be used.

For RMAs in a Foreign Currency where a Foreign Price is not set up, the Foreign Sales Price will be displayed. This price will be calculated by multiplying the Base Currency Sale Price multiplied by the RMA Exchange Rate.

When the Sales Promotion Discount Method is **Price Discount**, the system will calculate the Base Currency or Foreign Sales Price by applying the percentage discount to the Base Currency or Foreign Price.

**NOTE:** Please refer to the *Multi-Currency Inventory Management* module for an explanation of Foreign Prices and Levels.

### ***Restocking Charges***

Restocking Charges that are setup in Inventory Maintenance will be recalculated using the exchange rate of the RMA Receipts Currency. For example, if you use a Fixed Restocking Charge Method and the Charge is \$10.00 (in Base Currency) and the RMA Receipts Exchange Rate is 1.555, then the Restocking Charge that is calculated on the RMA Receipts transaction is \$15.55.

NOTE: If you are doing a receipt from an RMA that was already entered in RMA Data Entry, then the restocking charge will be taken from the original RMA.

### ***Original Invoice History Item Cost***

When selecting an item from A/R Invoice History, the original Base Currency Unit Cost is transferred from the Invoice History Detail record to the RMA Receipts Detail record. When creating S/O Credit Memos from that RMA Receipts transaction, the Base Currency Unit Cost from the RMA transaction is then transferred to the Credit Memo. When that Credit Memo is posted in the Sales Order module, that Base Currency Unit Cost is used when posting to the General Ledger and Inventory. This is important since the system should “back out” the item cost with the same cost amount.

On the third panel in RMA Options, Entry Options, there is a checkbox called “Allow Cost Override.” This allows the user to change the unit cost for that item during RMA Data Entry and RMA Receipts Entry. **IMPORTANT: Since RMA Receipts DATA Entry displays and maintains the Unit Cost in RMA Currency, if the user decided to change that unit cost, then the Base Unit Cost will be recalculated to an amount that is different than the original unit cost. This change has obvious implications when the SO Credit Memo posts back to the General Ledger and Inventory modules since it will no longer “back out” the item cost with the same cost amount. Please be aware of this!**

### ***Generate Transactions***

The **Generate Transactions** program creates the following transactions (if applicable) from RMA Receipts:

- S/O Credit Memo – This will be in the Currency of the RMA Receipt using the Exchange Rate from the RMA Receipt. The Base Currency Unit Cost is transferred from the RMA Receipt (which was originally taken from the A/R Invoice History Detail record) and will be used during posting of the Credit Memo to Inventory and General Ledger.
- Sales Order – This will be in the Currency of the RMA Receipt using the Exchange Rate from the RMA Receipt. The Sales Order is created, if applicable and if not already created using the “Xpress Sales Order” feature in RMA Data Entry.
- P/O Return of Goods – This will be in the Vendor’s Default Entry Currency (if APMC and POMC is installed). If the Return of Goods Currency is the same as the RMA Currency, then the RMA Exchange Rate will be used as the Return of Goods Exchange Rate, otherwise the Return of Goods Exchange Rate will be calculated based upon the Return of Goods date. The Item costing will be based upon Foreign Costing if IMMC is used and the item has Foreign Costing setup, otherwise the costs will be calculated in accordance to P/O Return of Goods Entry (please see the POMC manual for the details).
- Purchase Order – This will be in the Vendor’s Default Entry Currency (if APMC and POMC is installed). If the Purchase Order Currency is the same as the RMA Currency, then the RMA Exchange Rate will be used as the Purchase Order Exchange Rate, otherwise the Purchase Order Exchange Rate will be calculated based upon the Purchase Order date. The Item costing will be based upon Foreign Costing if IMMC is used and the item has Foreign Costing setup, otherwise the costs will be calculated in accordance to P/O Purchase Order Entry (please see the POMC manual for the details).

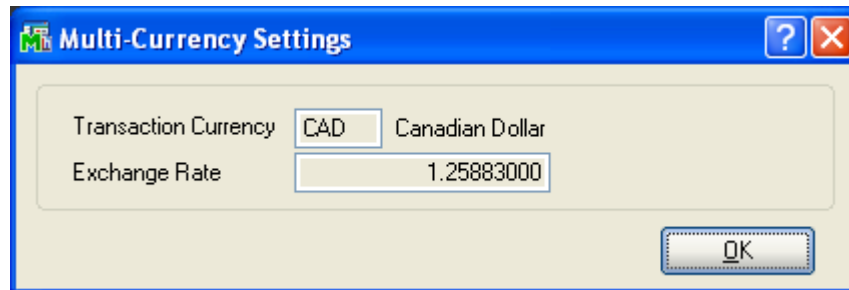
NOTE: These four transactions are created based upon the RMA settings in RMA Options and on the individual RMA Receipt records. Please see the standard RMA User Manual on how (and under what circumstances) these transactions are created.

### ***Generate Transactions Listing***

The **Generate Transactions Listing** has been enhanced to print the Currency Code and Exchange Rate of each transaction.

**RMA Inquiry**

The RMA Inquiry Header Panel has also been modified to include a **Currency Button**. Select this button to access the **Currency Code** and **Exchange Rate** of the transaction.



The Currency of the Transaction is displayed at the bottom of the RMA Inquiry Panel and all currency amounts are displayed in the RMA Currency.

The Inquiry programs that can be viewed from the Document drill-down are enhanced for Multi-Currency: Sales Order Inquiry, Invoice History Inquiry, Purchase Order Inquiry, and P/O Receipts History Inquiry.

## Section E: Reports

### Open RMA Report and RMA Receipt History Report

A new **Currency Button** has been added to these Report Panels, and when selected, the following screen will be displayed:

**Currency Range:** Enter a range of Currencies for a specific group of transactions. Select the Lookup Button to list all Currencies on file. This field will be displayed only for reports that print amounts from individual transactions.

**Printing Currency:** Select **Entry** for Transaction Currency or **Base** for Base Currency

**Printing Amounts:** Select **As Posted** to import all amounts As Posted or **Override Date** to convert amounts using an Exchange Rate as of an Override Date.

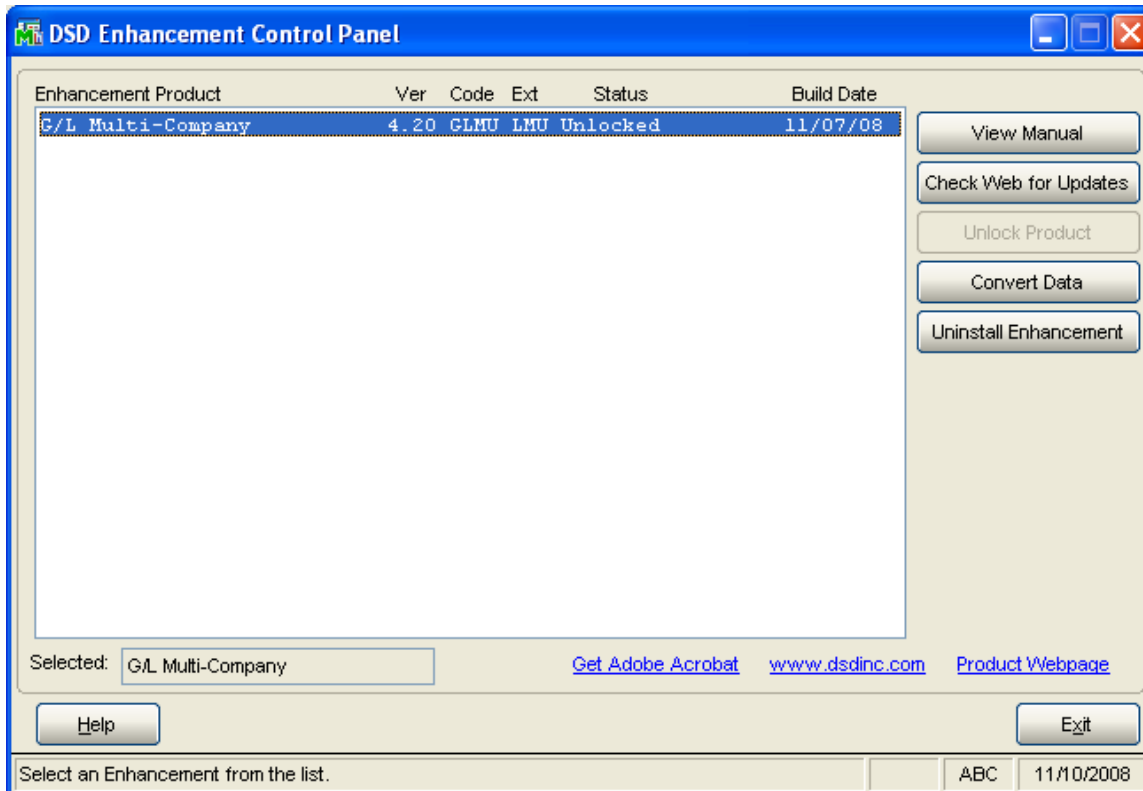
**Override Date:** Enter a date using the MMDDYY format to import amounts converted to the Printing Currency using the Exchange Rate as of this date. This field will be displayed only if you selected **Override Date** as the **Printing Amounts**.

**Rate Type:** Select **Buy Rate** or **Sell Rate**. This field will be displayed only if you selected **Override Date** as the **Printing Amounts**.

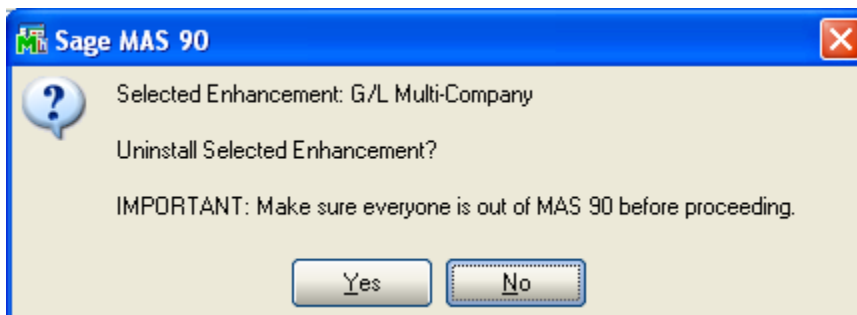
Note: When printing in Entry Currency, the transaction's Currency Code and Exchange Rate are also printed in the report detail.

## Section F: Uninstall DSD Enhancements

A DSD Enhancements Uninstall Utility has been provided for the purposes of removing DSD Enhancements from your Sage 100 System. This utility may be accessed from the **DSD Enhancement Control Panel** menu option on the **Library Master / Utilities** menu.

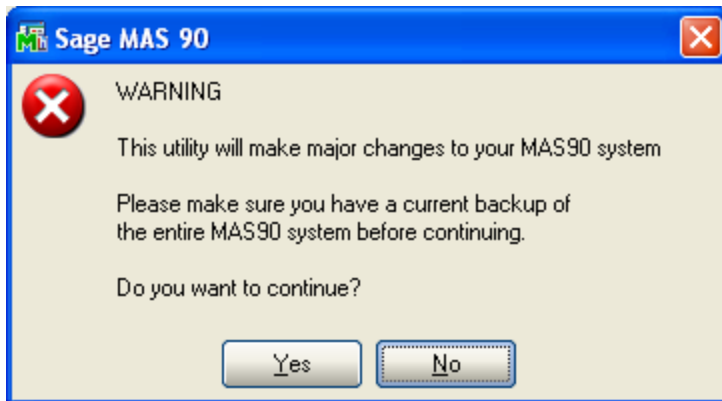


When accessing the **DSD Utility Suite**, select the enhancement that you wish to Uninstall, and then select the **Uninstall Enhancement** button. The following message box will appear:



Select **No** to exit the Uninstall Process.  
 Select **Yes** to continue with the Uninstall Process.

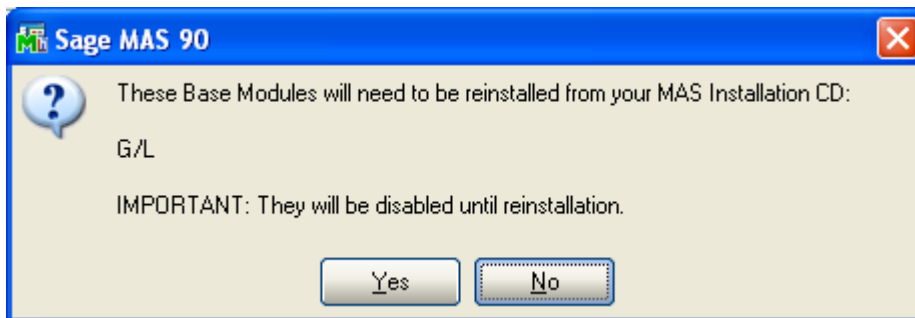
The following message box will appear, to remind you that a complete backup of your entire MAS90 system should be completed prior to uninstalling a DSD product.



Select **No** to exit the Uninstall Process.  
Select **Yes** to continue with the Uninstall Process.

**After the Uninstall of the DSD Enhancement, you MUST reinstall certain standard Sage 100 modules, followed by reinstallation of MAS Service Packs / Updates, if applicable.**

The following message box will appear, and will display which of those specific Sage 100 modules you must reinstall afterwards.



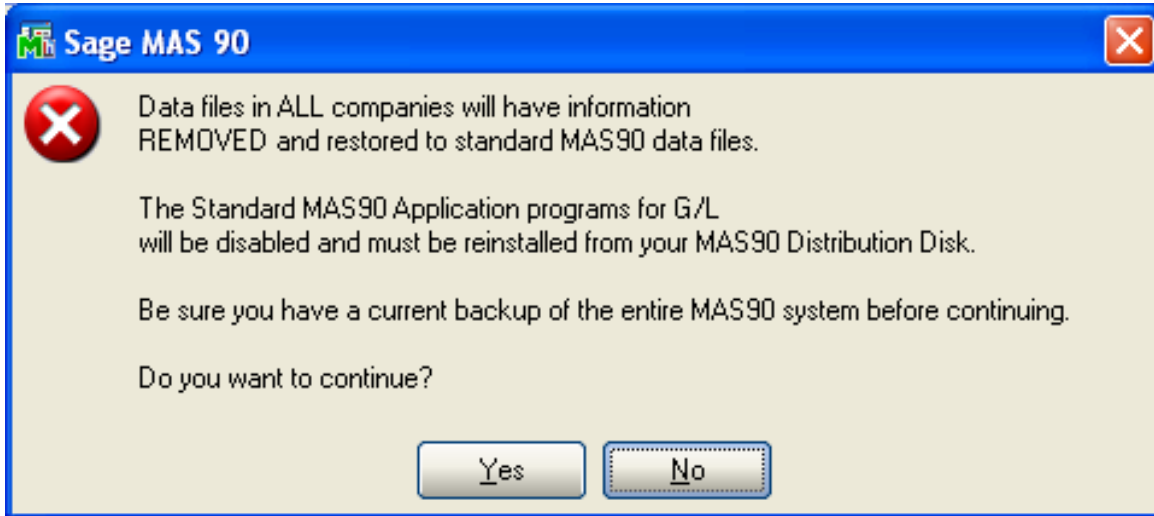
Select **No** to exit the Uninstall Process.  
Select **Yes** to continue with the Uninstall Process.



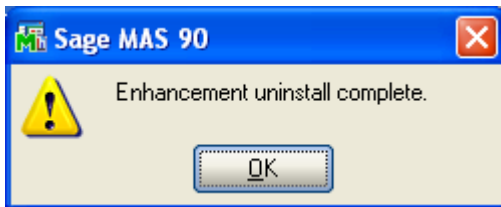
The following message box will appear, displaying the final warning message.

Select **No** to exit the Uninstall Process.

Select **Yes** to continue with the Uninstall Process. At this point, the DSD Enhancement will be removed from the Sage 100 system.



After completion of the Uninstall, the following message box will appear. Select OK to continue.



Now that the Uninstall process is completed, you must:

- Reinstall the applicable standard Sage 100 modules
- Reinstall the latest Sage 100 Service Pack/Updates, if applicable.
- Reinstall any other DSD Enhancements or Developer products that are affected from the reinstallation of the standard Sage 100 module(s).

## License Agreement

---

**IMPORTANT:** THIS SOFTWARE IS LICENSED BY DSD BUSINESS SYSTEMS, INC. TO CUSTOMERS FOR THEIR USE ONLY IN ACCORDANCE WITH THE TERMS SET FORTH IN THIS CUSTOMER LICENSE AGREEMENT. OPENING OR USING THIS PACKAGE CONSTITUTES ACCEPTANCE OF THESE TERMS. IF THE TERMS OF THIS LICENSE ARE NOT ACCEPTABLE, THE CUSTOMER MAY OBTAIN A FULL REFUND OF ANY MONEY PAID IF THIS UNUSED, UNOPENED PACKAGE IS RETURNED WITHIN TEN (10) DAYS TO THE DEALER FROM WHICH IT WAS ACQUIRED.

1. **LICENSE. DSD BUSINESS SYSTEMS, INC.**, a California corporation as Licensor and owner hereby agrees to grant you as Licensee a non-exclusive license to use the enclosed software subject to the terms and restrictions set forth in this License Agreement. Title in and ownership of all programs and program enhancements or modifications written by DSD Business Systems, Inc. shall remain at all times vested in DSD Business Systems, Inc. The right granted by this Customer License Agreement and your payment of the non-refundable License fee is the right to use the Program in accordance with the terms of this Customer License Agreement. Delivery of a copy of the Program to you is made solely to enable you to exercise this right.
2. **COPYRIGHT.** This Program is copyrighted and all rights are reserved by DSD BUSINESS SYSTEMS, INC. and SAGE, INC. You may not copy or reproduce any part of the Program except to copy the Program for backup purposes. If you make a backup copy you must reproduce and include the copyright notice on it. The distribution of the product is intended for the use of the original Licensee only and for use only on the computer systems specified. Lawful users of this Program are hereby licensed only to read the Program from its medium into the memory of a computer only for the purpose of executing the program.

The documentation is also copyrighted and all rights are reserved. This document may not, in whole or in part, be copied, photocopied, reproduced, translated, transmitted or reduced to any electronic medium of machine readable form without prior consent, in writing, from DSD BUSINESS SYSTEMS, INC.

The Licensee recognizes that DSD BUSINESS SYSTEMS, INC. has expended considerable time, effort and money to develop the licensed Software and Manual and that DSD BUSINESS SYSTEMS, INC. will be substantially damaged by its unauthorized use, sale or distribution. In addition to recovery of all damages and the obtaining of injunctive relief as provided by law, in the event legal action must be taken to enforce this provision, the Licensee will pay DSD BUSINESS SYSTEMS, INC. all reasonable legal fees incurred in enforcing the rights of DSD BUSINESS SYSTEMS, INC. under this provision.

3. **RESTRICTIONS ON USE AND TRANSFER.** The original and any backup copies of the Program and its documentation are to be used only in connection with a single computer or network fileserver. You may physically transfer the Program from one computer to another, provided that the Program is used in connection with only one computer or network fileserver at a time. You may not distribute copies of the Program Documentation to others. The Program is to be used exclusively for business purposes and not for personal, family or household use. YOU MAY NOT USE, COPY, MODIFY, OR TRANSFER THE PROGRAM, IN WHOLE OR IN PART, EXCEPT AS EXPRESSLY PROVIDED FOR IN THIS LICENSE AGREEMENT. IN ADDITION YOU MAY NOT MODIFY, ADAPT, TRANSLATE, REVERSE ENGINEER, DECOMPILE, DISASSEMBLE THE PROGRAM, OR CREATE ANY DERIVATIVE WORK BASED UPON THE PROGRAM.
4. **WARRANTY.** DSD BUSINESS SYSTEMS, INC. software is licensed "as is" with no warranties of any kind, either expressed or implied, other than the following: DSD BUSINESS SYSTEMS will repair any bugs or flaws found in the software. Flaws of a critical nature which affect the basic functionality of the software will be repaired on an "emergency" basis, with a corrected distribution diskette sent via UPS Blue or equal. Flaws of a non-critical or cosmetic nature will be repaired on a timely basis, and a corrected distribution diskette sent via UPS ground or regular mail. All incidental or consequential damages that result from any defect in the software, even if DSD Business Systems, Inc. has been advised of the possibility of such damages will be assumed by you.

5. **LIMITED WARRANTY FOR DISKETTES.** To the original licensee only, DSD BUSINESS SYSTEMS, INC. warrants the magnetic diskette on which the Program is recorded to be free from defects in materials and faulty workmanship under normal use and service for a period of ninety days from the date the Program is delivered. Any implied warranties of merchantability and fitness for a particular purpose are limited in duration to the period of ninety (90) days from the date of delivery. If, during this 90 day period, a defect in the diskette should occur, the diskette may be returned DSD BUSINESS SYSTEMS, INC., 5120 Shoreham Place, Suite 280, San Diego, California, 92122, or to any authorized DSD BUSINESS SYSTEMS, INC. Dealer, and the diskette will be replaced without charge to you, provided that you have previously returned the Warranty Registration Card along with a copy of your sales receipt for the Program.
6. **NO OTHER WARRANTIES.** No dealer or distributor of DSD BUSINESS SYSTEMS, INC. products or any agent of DSD BUSINESS SYSTEMS, INC. is authorized to make any representation of warranty with respect to the Program except those expressly stated in the Customer License Agreement.
7. **LIMITATION OF LIABILITY.** Neither DSD BUSINESS SYSTEMS, INC. nor anyone else who has been involved in the creation, production or delivery of this program shall be liable for any direct, incidental or consequential damages.
8. **TERM.** This license is effective until terminated. You may terminate it at any time by returning the Program and Documentation together with all copies, modifications and merged portions in any form to DSD BUSINESS SYSTEMS, INC. The license will also be terminated by DSD BUSINESS SYSTEMS, INC. immediately and without notice if you fail to comply with any term or condition of this License Agreement.
9. **ACKNOWLEDGMENT.** Your opening this package, use of this program or signature on the warranty registration card acknowledges that you have read this customer license agreement and agree to its terms. You further agree that the license agreement is the complete and exclusive statement of the agreement between yourself and DSD BUSINESS SYSTEMS, INC. and supersedes any proposal or prior agreement, oral or written, and any other communications between yourself and DSD BUSINESS SYSTEMS, INC or dealers and distributors of DSD BUSINESS SYSTEMS, INC products relating to the subject matter of this agreement.
10. **ASSIGNMENT.** You may not sublicense this license or the Program. You may not rent this Program or the use of the Program. You may not transfer this copy of the Program unless the recipient agrees in writing (and a copy of such acceptance is sent to DSD BUSINESS SYSTEMS, INC., 5120 Shoreham Place, Suite 280, San Diego, California, 92122) to accept all of the terms of this Customer License Agreement. Any attempt by you to otherwise rent, sublicense, assign or transfer any of the rights, duties or obligation hereunder is void and may be the cause for immediate termination of the license. DSD BUSINESS SYSTEMS, INC. may assign any of its rights and obligation under this agreement to any party without notice to you.

## Fax Transmittal Form

---

To:	<b><i>DSD Business Systems Customer Service</i></b>		Fax:	<b><i>858/550-4900</i></b>
From:	Name:		Phone:	
	Company:		Fax:	
Date:	/ /	# Pgs Including this Page:		
Subject:	Check One: <input type="checkbox"/> Product Problem <input type="checkbox"/> Suggestions			
Product:	<b><i>RAMC RMA Multi-Currency</i></b>		Version:	<b><i>6.00</i></b>

This page may be copied