



DSD Business Systems

Sage 100 Enhancements

R173

Sales Order Deposits on Receivable Reports

AR-1173

Version 7.20



Information in this document is subject to change without notice.

Copyright 1993-2023, DSD Business Systems All rights reserved.

Sales Order Deposits on Receivable Reports User's Manual
Version 7.20

5 October, 2023

DSD Business Systems
8787 Complex Drive
Suite 400
San Diego, CA 92123
858/550-5900 8:00am to 5:00pm PST
858/550-4900 Fax

Trademarks

ProvideX® is a Trademark of Sage Software.

Windows is a trademark of Microsoft Corporation.

Sage 100® is a registered trademark of Sage Software.

PXPlus® is a registered trademark of PVX Plus technologies

All other product names and brand names are service marks, and/or trademarks or registered trademarks of their respective companies.

This documentation and the software described herein, is prepared and published under license. Sage Software has not tested or verified either the software or any representation in this documentation regarding the software. Sage Software does not make any warranty with respect to either this documentation or the software described herein, and specifically disclaims any warranty, express or implied, with respect hereto, including the warranties of fitness for a particular purpose and merchantability.

Table of Contents

SECTION A: INTRODUCTION	4
WEB RESOURCES	4
SUPPORT	4
SALES ORDER DEPOSITS ON RECEIVABLE REPORTS FEATURES.....	5
SECTION B: GETTING STARTED	6
REQUIRED LEVELS	6
INSTALLATION	6
DSD ENHANCEMENT CONTROL PANEL.....	8
SECTION C: SETUP	10
SECTION D: SYSTEM OPERATIONS	11
SECTION E: UNINSTALL DSD ENHANCEMENTS	15

Section A: Introduction

This manual contains a description and instructions for this DSD product. Operating instructions are included for the features added by this product to Sage 100. For instructions on using Sage 100, refer to the appropriate Sage 100 manual, or call your Sage 100 reseller. DSD Business Systems offers excellent Sage 100 support, at an hourly rate.

Web Resources

DSD web site: <http://www.dsdinc.com>

The Enhancement page contains:

- Current Release Schedule*
- Purchasing Information*
- Installation Instructions*
- Product Support*
- Enhancement Links*

EEEE Sales Order Deposits on Receivable Reports:

<http://www.dsdinc.com/enh/pages/EEEE.htm>

The product web page contains:

- Product Description*
- Web Links*
- Current Product Version Table*
- Product Installation File Download*
- Product Manual in .pdf Format*
- Revision History*
- FAQ*

Support

DSD provides product support through Sage 100 resellers. Support is provided for the current version. Older versions are supported at an hourly rate. DSD's telephone number is **858-550-5900**. Fax: **858-550-4900**.

For a hard error, where the program displays an error dialog, report:

- Error number.*
- Program name.*
- Line number.*
- Program version.*
- Exact sequence that caused the error, including menus and menu selections.*
- Other pertinent information.*

If leaving a message or faxing, please include:

Your name.

Your phone number (and fax if applicable) and extension.

It is possible to be unable to duplicate a problem, because of data corruption or because we have not exactly duplicated a particular operating environment. In such circumstances, we can only continue to try to fix the problem if we can either access the system remotely or by some other to duplicate the system.

Sales Order Deposits on Receivable Reports Features

This Extended Solution adds detail of customer deposits referenced on Sales Orders to the Accounts Receivable Trial Balance and the Aged Invoice Report work files as well as selection options which govern the manner in which they print.

Additional functionality exists if Extended Solution SO-1032: Multiple Customer Deposits on a Sales Order is installed and enabled.

Section B: Getting Started

CAUTION

• If you reinstall or upgrade one of the Sage 100 modules listed in the following table, you must also reinstall this Enhancement.

• Enhancements from different Sage Developers are generally not designed to work together. If installed together, problems are likely to occur.

- Check with DSD before installing more than one Enhancement.

Required Levels

Sage 100 Module	Module Required	Required Level
M/M	Y	7.20

Installation

1. **Back-up:** Exit all Sage 100 sessions. Back-up existing Sage 100 data.
2. **Check Levels:** Sage 100 module levels **must match** those listed above.
3. **Run Enhancement Setup Program:** Save the executable installation program (sent to you or downloaded from our website) in a convenient location on the Sage 100 server. Launch the program from Windows Explorer or by selecting Start/Run, and then browse for the file in the location you saved it. Follow on-screen instructions.
4. **Send your Sage Serial Number to your DSD Representative:** Send your Sage Serial Number to your DSD representative in order for us to send you back the encrypted keys to unlock your system. This serial number can be found in Library Master\Setup\System Configuration, Tab 3. Registration as Serial Number.
5. **Re-Start Sage 100:** Sage 100 will be updated.
6. **Unlock the Enhancement:** DSD Enhancements must be unlocked to run. When any part of the Enhancement is run for the first time, the **DSD Enhancement License Agreement and Activation** window will appear. Follow the steps shown on that window. *You can click the Help button for more detailed instructions.*

Note: On the next page is a screenshot of the DSD Enhancement License Agreement and Activation window.

After accepting the License Agreement, you can then select the type of unlocking that you'd prefer. The choices are File, Web, Demo and Manual Entry.

File Unlock: After receiving your encrypted serial number key file from DSD, and placing that file in the MAS90/SOA directory, selecting this option will unlock all products keys contained in the file. This means you can unlock all enhancements at once using this option.

Web Unlock: If the system that is running the DSD Enhancement *has web access* and you *have sent DSD your Sage Serial number*, you can unlock the Enhancement without assistance using Web Unlock. When this option is selected, the program will attempt to download encrypted serial number key file from DSD *and then proceed to unlock all enhancements contained in the file*.

- *The Sage 100 system that is being used must have web access for this option to be effective.*
- *You can send your Sage Serial Number to your DSD Enhancements sales representative.*

Demo Unlock: If a Demo mode is available for the Enhancement you're running, you will be able to Demo unlock the product without assistance from DSD for demo purposes.

- *Creating a Demo Unlock is a good way to temporarily unlock DSD Enhancements off-hours, if you do not have web or email access. Later, you can unlock the product fully, during business hours.*

Manual Entry Unlock: If you want to unlock a single enhancement using a single encrypted key, you can select this option and enter the 64 character key you receive from DSD by copy and paste.

Note: You can also unlock a DSD Enhancement through the [DSD Enhancement Control Panel](#) found on the Library Master Utilities Menu. Then, select the Enhancement with your mouse from the list of Enhancements and click the **Unlock Product** button on the right side of the window.

- Convert Data:** After unlocking, the DSD Conversion Wizard will appear. Follow on-screen instructions to complete data conversion. *You can exit the conversion program without converting data. The Enhancement will not proceed, however, until data is converted. If you enter an enhanced program and data has not been converted, the conversion program will run again.*

DSD Enhancement Control Panel

Starting with version 3.61, all DSD Enhancement products include DSD's Enhancement Control Panel. The **DSD Enhancement Control Panel is accessed from the Library Master Utilities menu.**

The DSD Enhancement Control Panel is a simple to use yet powerful system to help maintain DSD Enhancements installed on a Sage 100 system. To use it, select an Enhancement product from the list on the window and then click the button, on the right side of the window, which corresponds with the desired task.

View Manual: This button will display the product manual for the selected Enhancement using Adobe Acrobat. For this to be possible, the PDF file for the corresponding manual must be in the "MAS90/PDF" folder in the Sage 100 system. If the file is not present, and the system has web access, the correct PDF file will be automatically downloaded from the DSD website, put into the "MAS90/PDF" folder and then displayed.

Check the Web for Updates: This button will check the DSD website to see what the current build is the selected Enhancement and alert the user if a later version is available. *This requires an internet connection on the Sage 100 system.*

Unlock Product: This will cause the DSD Enhancement License Agreement and Activation window to appear. Using this window is described on the previous page. *This button is disabled if the selected Enhancement is already unlocked or if unlocking is not required.*

Unlock All Products: This will cause the DSD Enhancement All License Agreement and Activation window to appear. This window is similar to the one described on the previous page, but has only web and file as options to unlock. *This button is never disabled.*

Convert Data: After verification, the selected Enhancement's data conversion program will run. Data conversion is non-destructive, and may be triggered any number of times. Sometimes this is required to fix data records imported or updated from a non-enhancement installation.



Multi-Convert Data: Multiple Companies can be converted at the same time for a given Enhancement. (If you have a large number of Companies to convert, please do in batches of 20 or fewer due to memory limitations.)



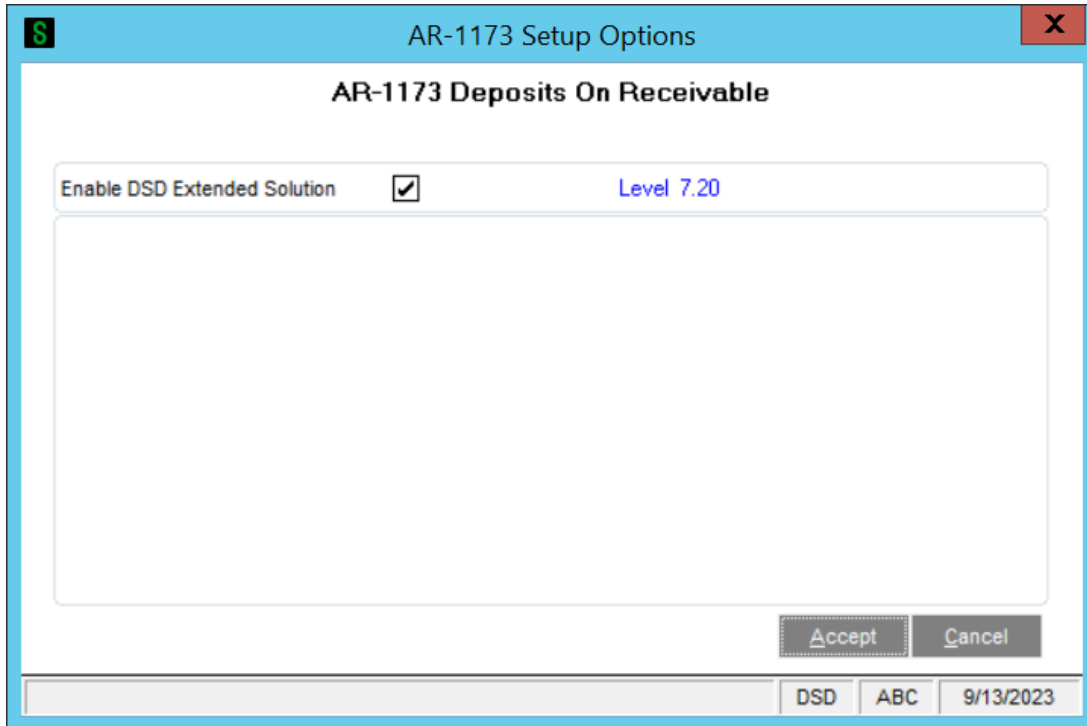
Help: The Help button, located at the bottom right of the window, opens an HTML help file.

Get Adobe Acrobat: Opens the Adobe Acrobat website to the page where Acrobat can be downloaded and installed.

Uninstall Enhancement If this option is available, then selecting this button will start the un-install process, removing the enhancement from the system. (for more information see [Uninstall DSD Enhancements](#))

Section C: Setup

Upon completion of software installation, you will need to access DSD Extended Solutions Setup from the Accounts Receivable Setup menu. Select this part number and the Setup screen for this Extended Solution will appear. Check the 'Enable Extended Solution' box to activate this Extended Solution.



The screenshot shows a dialog box titled "AR-1173 Setup Options". Inside the dialog, the main heading is "AR-1173 Deposits On Receivable". Below this heading, there is a checkbox labeled "Enable DSD Extended Solution" which is checked. To the right of the checkbox, the text "Level 7.20" is displayed. At the bottom right of the dialog, there are two buttons: "Accept" and "Cancel". At the bottom of the dialog, there are three small boxes containing the text "DSD", "ABC", and "9/13/2023".

You should visit this Setup screen after each upgrade or reinstallation of this Extended Solution.

Role Maintenance

The following Task has been added to Accounts Receivable, Setup Options:

🔍 Extended Solutions Setup

Please review your security setup in Role Maintenance and make appropriate changes.

Section D: System Operations

Aged Invoice Report

An 'S/O Dep' button has been added to the report selection screen, to 'Include S/O Deposit Information'.

Accounts Receivable Aged Invoice Report (ABC) 10/2/2023

Report Setting: STANDARD

Description: Accounts Receivable Aged Invoice Report

Setting Options:

- Type: Public
- Print Report Settings:
- Number of Copies: 1
- Default Report:
- Three Hole Punch:
- Collated:

Sort Report By: Customer Number

Options:

- Aging Date: 10/2/2023
- Report Detail Option: Invoice
- Aging Option to Print: All Open
- Future Transactions: Exclude
- Transaction Date: []

Include Sales Order Deposit Information:

OK

Select Field	Operand	Value
Customer Number	All	
Customer Name	All	
Salesperson	All	
Customer Type	All	
State/Province	All	
ZIP/Postal Code	All	

Microsoft Print to PDF

Keep Window Open After: Print Preview

Print Preview Setup

If you check this box and select either 'Invoice' or 'Detail' to the 'Report Detail Option' prompt, a block of Sales Order Deposit information will print between the standard customer information and the invoice detail. The block contains one line per open Sales Order that has a deposit. The following information will be included: Sales Order Number, Sales Order Date, Check Number and Deposit Amount.

If SO-1032: *Customer Deposits in Sales Order* is installed and enabled, then detail of multiple sales order deposits, deposit number and deposit date, will be printed using data based upon the Sales Order Setup option 'Retain Sales Orders/Quote History'. Only Deposits dated on or before the Aging Date will be printed.

Customers who would not normally be included on the report (i.e., those who have no open receivables) but who do have open Sales Orders with Deposits, will be included. The standard Customer line will print followed by the Sales Order block described above.

Deposit amounts will be aged according to Sales Order Date. If SO-1032 is enabled, deposit amounts will be aged individually by deposit date. Deposit amounts will be written to the Balance field and aging fields as negatives.

Accounts Receivable Aged Invoice Report
Sorted by Customer Number
All Open Invoices - Aged as of 7/9/2010

ABC Distribution and Service Corp. (ABC)

Division Number: 01

Customer/ Invoice Date	Invoice Number	Due Dates Invoice Discount	Discount Amount	Balance	Current	30 Days	60 Days	90 Days	120 Days	Days Delq
ABF American Business Futures Contact: Phone: (414) 555-4787 Extension: 219 Credit Limit: 120,000.00 Advances S/O #: 0000115 S/O Date: 5/18/2010 Check/Ref #: 15684 Adv Amount: 3,500.00 S/O #: 0000153 S/O Date: 5/11/2010 Check/Ref #: Adv Amount: 250.00 Adv Total: 3,750.00										
1/31/2010	0000122-IN	3/30/2010	0.00	850.00	0.00	0.00	0.00	850.00	0.00	101
3/1/2010	0100054-IN	4/1/2010	0.00	407.40	0.00	0.00	0.00	407.40	0.00	99
3/31/2010	0000141-IN	4/30/2010	0.00	1,178.69	0.00	0.00	1,178.69	0.00	0.00	70
4/30/2010	0000190-IN	5/30/2010	0.00	85.00	0.00	85.00	0.00	0.00	0.00	40
4/30/2010	APR0001-FC	4/30/2010	0.00	43.89	0.00	0.00	43.89	0.00	0.00	70
5/10/2010	0100055-CM		0.00	81.48-	0.00	0.00	81.48-	0.00	0.00	
5/15/2010	0100033-IN	6/14/2010	0.00	613.05	613.05	0.00	0.00	0.00	0.00	25
5/15/2010	0100034-IN	6/14/2010	0.00	2,467.61	2,467.61	0.00	0.00	0.00	0.00	25
5/30/2010	0100049-IN	6/29/2010	0.00	130.00	130.00	0.00	0.00	0.00	0.00	10

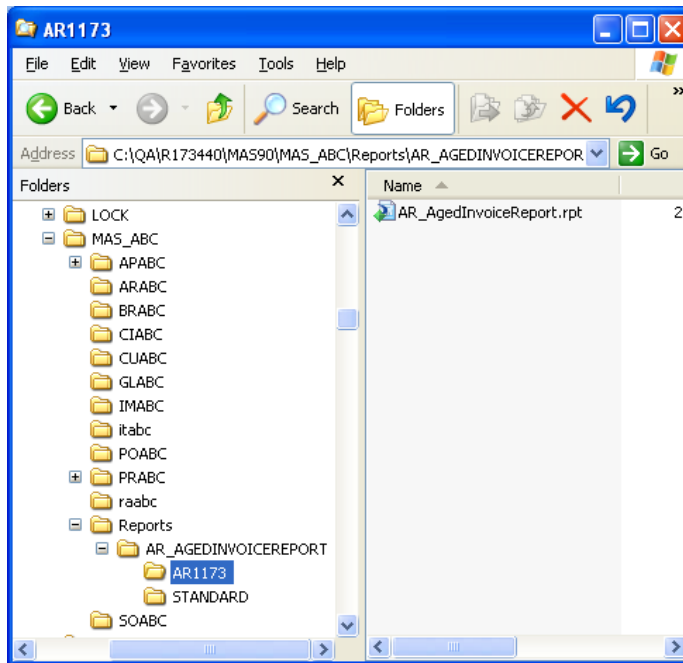
Addition of New Aged Invoice Report information

The new deposit information can be added to the Aged Invoice Report two ways:

Option 1:

An Accounts Receivable Aged Invoice report has been provided with the Sales Order Deposit information. It is called **AR1173_234AR_AgedInvoiceReport.rpt** and can be found in the ‘...\\mas90\reports’ directory.

You will need to create a new Report Setting for your Aged Invoice Report. Choose the Aged Open Invoice Report menu item, and in the report selection screen, select ‘Save As’ from the Save drop down menu, enter a new report setting name (e.g. AR1173), then click the ‘Designer’ button, save the new report setting and close Crystal Reports. Using Windows Explorer, copy **AR1173_234AR_AgedInvoiceReport.rpt** to the new **MAS_XXX/Reports/AR_AGEDINVOICEREPOR** report setting directory (e.g AR1173), and rename it to **AR_AgedInvoiceReport.rpt**.



Option 2:

Or you can modify the standard *Accounts Receivable Aged Invoice* report to show Sales Order Deposit information. Sales Order deposits will be written to the work file as Type "1" records. Add a new Detail Section to hold the deposit details. Copy these fields from the right side of Detail Section "A": Balance, CurrentAmt, AgingAmt1, AgingAmt2, AgingAmt3, and @Aging4OrRetentionAmt. On the left side include the Deposit fields you would like to see on the report that were added to the work table. See ODBC dictionary section for the list of new fields.

Go into the Selection Expert for Detail Section "A" and select the formula editor for Suppress and modify this formula:

```
IF {@DetailOption} = "S" or {AR_AgedInvoiceReportWrk.Type} = "1" THEN
```

```
  formula = true
```

```
ELSE
```

```
...
```

Go into the Selection Expert for the new Detail Section, select the formula editor for Suppress, and paste the Suppression formula from Section "A" and modify it:

```
IF {@DetailOption} = "S" or {AR_AgedInvoiceReportWrk.Type} <> "1" THEN
```

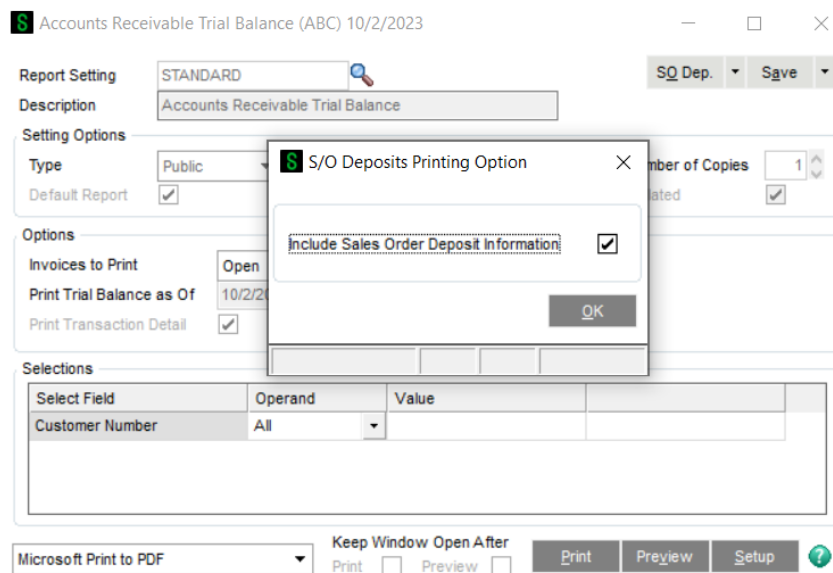
```
  formula = true
```

```
ELSE
```

```
...
```

Trial Balance Report

A new run time selection option has been added, via the 'SO Dep' button to 'Include Sales Order Deposit Information'. If you check this box, Sales Order deposits will be written to the work file with blank Invoice No and Invoice Type set to 'DP'.



Customers who would not normally be included on the report (i.e., those who have no open receivables) but who do have open Sales Orders with Deposits, will be included.

To modify the report to show Sales Order Deposit information, add a new Detail Section to hold the deposit details. Include the Deposit fields you would like to see on the report in the new Detail Section. See ODBC dictionary section for the list of new fields.

Go into the Selection Expert for Detail Section "A" and select the formula editor for Suppress and add this formula:

```
formula = {AR_TrialBalanceWrk.InvoiceType}="DP"
```

Go into the Selection Expert for the new Detail Section and select the formula editor for Suppress and add this formula:

```
formula = {AR_TrialBalanceWrk.InvoiceType}<>"DP"
```

ODBC Dictionary

The files listed below have been added, or changed, in the ODBC Dictionaries by this Extended Solution for Crystal Reports purposes.

File Fields

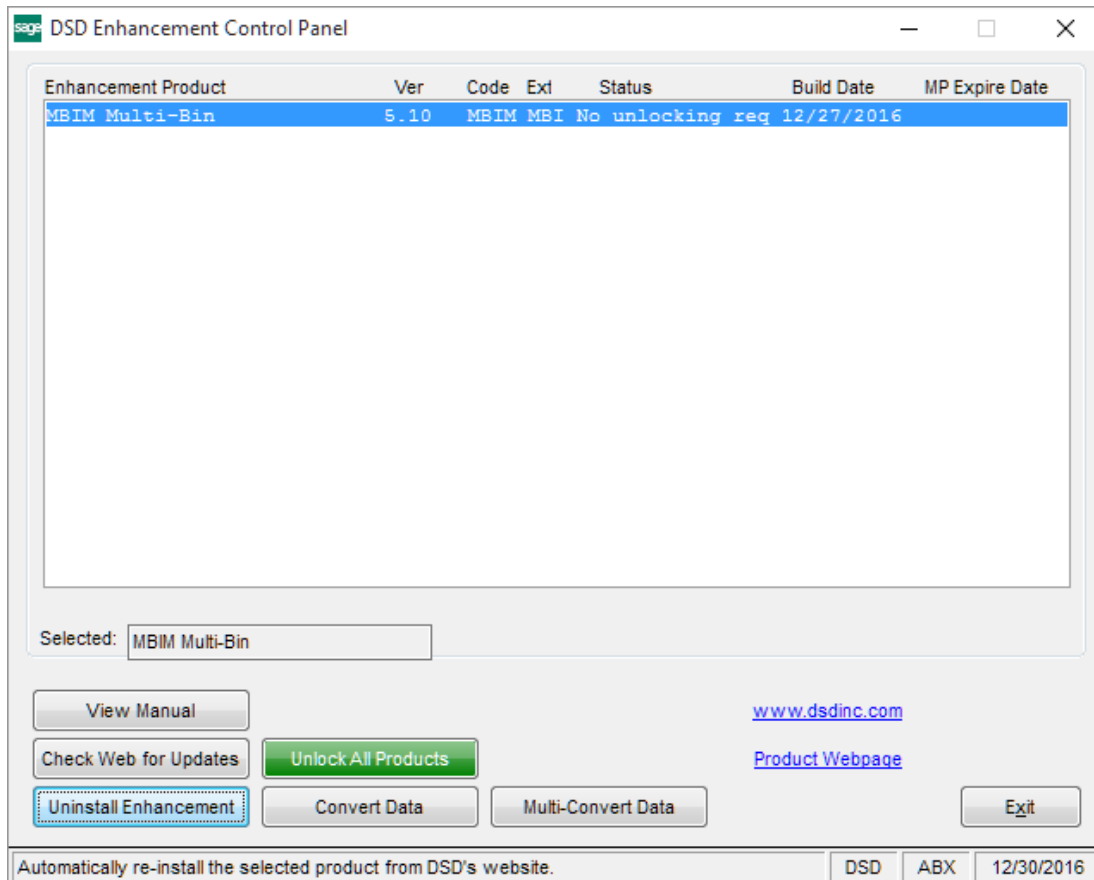
```
AR_AgedInvoiceReportWrk
  SalesOrderNo_001$
  SalesOrderDate_001$
  PaymentType_001$
  PaymentMethod_001$
  DepositDate_001$
  DepositNo_001$
  CheckNo_001$, ReferenceNo_001$
  Last4UnencryptedCCNos_001$
  DepositAmt_001
```

```
AR_TrialBalanceWrk
  SalesOrderNo_001$
  SalesOrderDate_001$
  PaymentType_001$
  PaymentMethod_001$,
  DepositDate_001$
  DepositNo_001$
  CheckNo_001$
  ReferenceNo_001$
  Last4UnencryptedCCNos_001$
  DepositAmt_001
```

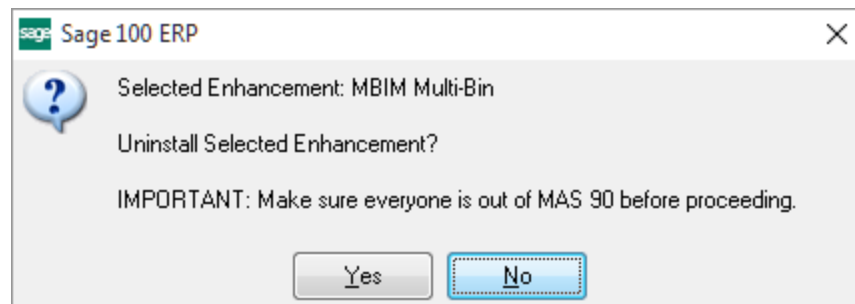
Be aware that the ODBC Dictionaries may contain other files and data fields that will be unavailable without their corresponding Extended Solutions installed.

Section E: Uninstall DSD Enhancements

A DSD Enhancements Uninstall Utility has been provided for the purposes of removing DSD Enhancements from your Sage 100 System. This utility may be accessed from the **DSD Enhancement Control Panel** menu option on the **Library Master / Utilities** menu.

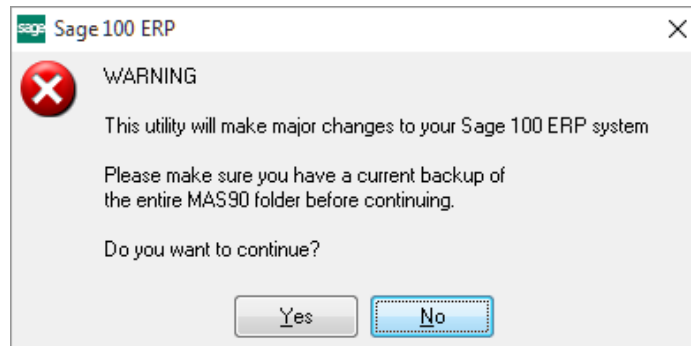


When accessing the **DSD Enhancement Control**, select the enhancement that you wish to Uninstall, and then select the **Uninstall Enhancement** button. The following message box will appear:



Select **No** to exit the Uninstall Process.
 Select **Yes** to continue with the Uninstall Process.

The following message box will appear, to remind you that a complete backup of your entire Sage 100 system should be completed prior to uninstalling a DSD product.



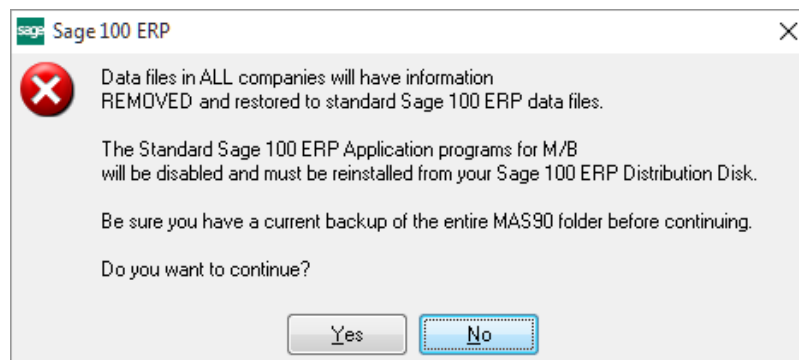
Select **No** to exit the Uninstall Process.
Select **Yes** to continue with the Uninstall Process.

After the Uninstall of the DSD Enhancement, you MUST reinstall certain standard Sage 100 modules, followed by reinstallation of Product Updates and Hot Fixes, if applicable.

A message box will appear, and will display which of those specific Sage 100 modules you must reinstall afterwards.

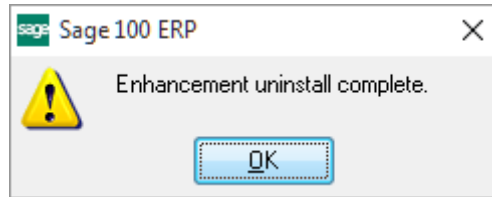
Select **No** to exit the Uninstall Process.
Select **Yes** to continue with the Uninstall Process.

The following message box will appear, displaying the final warning message.



Select **No** to exit the Uninstall Process.
Select **Yes** to continue with the Uninstall Process. At this point, the DSD Enhancement will be removed from the Sage 100 system.

After completion of the Uninstall, the following message box will appear. Select OK to continue.



Now that the Uninstall process is completed, you must:

- Reinstall the applicable standard Sage 100 modules
- Reinstall the latest Sage 100 Service Pack/Updates, if applicable.
- Reinstall any other DSD Enhancements or Developer products that are affected from the reinstallation of the standard Sage 100 module(s).