

DSD Business Systems

Sage 100 Enhancements

R032

Consolidated Statements

AR-1032

Version 7.40



Information in this document is subject to change without notice.

Copyright 1993-2025, DSD Business Systems All rights reserved.

Consolidated Statements User's Manual
Version 7.40

26 January, 2026

DSD Business Systems
8787 Complex Drive
Suite 400
San Diego, CA 92123
858/550-5900 8:00am to 5:00pm PST
858/550-4900 Fax

Trademarks

ProvideX® is a Trademark of Sage Software.

Windows is a trademark of Microsoft Corporation.

MAS 90/200® is a registered trademark of Sage Software.

PXPlus® is a registered trademark of PVX Plus technologies

All other product names and brand names are service marks, and/or trademarks or registered trademarks of their respective companies.

This documentation and the software described herein, is prepared and published under license. Sage Software has not tested or verified either the software or any representation in this documentation regarding the software. Sage Software does not make any warranty with respect to either this documentation or the software described herein, and specifically disclaims any warranty, express or implied, with respect hereto, including the warranties of fitness for a particular purpose and merchantability.

Table of Contents

SECTION A: INTRODUCTION	5
WEB RESOURCES	5
SUPPORT	5
CONSOLIDATED STATEMENTS FEATURES	6
SECTION B: GETTING STARTED	7
REQUIRED LEVELS	7
INSTALLATION	7
DSD ENHANCEMENT CONTROL PANEL	9
SECTION C: SETUP	11
SECTION D: SYSTEM OPERATIONS	12
CONSOLIDATED CUSTOMER SALES HISTORY REPORT	14
SECTION E: UNINSTALL DSD ENHANCEMENTS	16

Section A: Introduction

This manual contains a description and instructions for this DSD product. Operating instructions are included for the features added by this product to MAS 90/200. For instructions on using MAS 90/200, refer to the appropriate MAS 90/200 manual, or call your MAS 90/200 reseller. DSD Business Systems offers excellent MAS 90/200 support, at an hourly rate.

Web Resources

DSD web site: <http://www.dsdinc.com>

The Enhancement page contains:

- Current Release Schedule*
- Purchasing Information*
- Installation Instructions*
- Product Support*
- Enhancement Links*

R032 Consolidated Statements:

<http://www.dsdinc.com/enh/pages/R032.htm>

The product web page contains:

- Product Description*
- Web Links*
- Current Product Version Table*
- Product Installation File Download*
- Product Manual in .pdf Format*
- Revision History*
- FAQ*

Support

DSD provides product support through MAS 90/200 resellers. Support is provided for the current version. Older versions are supported at an hourly rate. DSD's telephone number is **858-550-5900**. Fax: **858-550-4900**.

For a hard error, where the program displays an error dialog, report:

- Error number.*
- Program name.*
- Line number.*
- Program version.*

*Exact sequence that caused the error, including menus and menu selections.
Other pertinent information.*

If leaving a message or faxing, please include:

Your name.

Your phone number (and fax if applicable) and extension.

It is possible to be unable to duplicate a problem, because of data corruption or because we have not exactly duplicated a particular operating environment. In such circumstances, we can only continue to try to fix the problem if we can either access the system with Symantec PCAnywhere or by some other means access or duplicate the system.

Consolidated Statements Features

This DSD Extended Solution allows you to print statements which consolidate receivables across like customer numbers within a division or those customers with the same customer sort field value.

A Consolidated Customer Sales History report (see *Specific Purpose Rule*) ships with this product as well.

Section B: Getting Started



- **If you reinstall or upgrade one of the MAS 90/200 modules listed in the following table, you must also reinstall this Enhancement.**
- Enhancements from different Sage Developers are generally not designed to work together. If installed together, problems are likely to occur.
- **Check with DSD before installing more than one Enhancement.**
- **Do not install this Enhancement on MAS SQL Systems.**

Required Levels

MAS 90/200 Module	Module Required	Required Level
A/R	Y	7.40

Installation

1. **Back-up:** Exit all Sage 100 sessions. Back-up existing Sage 100 data.
2. **Check Levels:** Sage 100 module levels **must match** those listed above.
3. **Run Enhancement Setup Program:** Save the executable installation program (sent to you or downloaded from our website) in a convenient location on the Sage 100 server. Launch the program from Windows Explorer or by selecting Start/Run, and then browse for the file in the location you saved it. Follow on-screen instructions.
4. **Send your Sage Serial Number to your DSD Representative:** Send your Sage Serial Number to your DSD representative in order for us to send you back the encrypted keys to unlock your system. This serial number can be found in Library Master\Setup\System Configuration, Tab 3. Registration as Serial Number.
5. **Re-Start Sage 100:** Sage 100 will be updated.
6. **Unlock the Enhancement:** DSD Enhancements must be unlocked to run. When any part of the Enhancement is run for the first time, the **DSD Enhancement License Agreement and Activation** window will appear. Follow the steps shown on that window. *You can click the Help button for more detailed instructions.*

Note: On the next page is a screenshot of the DSD Enhancement License Agreement and Activation window.

After accepting the License Agreement, you can then select the type of unlocking that you'd prefer. The choices are File, Web, Demo and Manual Entry.

File Unlock: After receiving your encrypted serial number key file from DSD, and placing that file in the MAS90/SOA directory, selecting this option will unlock all products keys contained in the file. This means you can unlock all enhancements at once using this option.

Web Unlock: If the system that is running the DSD Enhancement *has web access* and you *have sent DSD your Sage Serial number*, you can unlock the Enhancement without assistance using Web

Unlock. When this option is selected, the program will attempt to download encrypted serial number key file from DSD *and then proceed to unlock all enhancements contained in the file.*

- *The Sage 100 system that is being used must have web access for this option to be effective.*
- *You can send your Sage Serial Number to your DSD Enhancements sales representative.*

Demo Unlock: If a Demo mode is available for the Enhancement you're running, you will be able to Demo unlock the product without assistance from DSD for demo purposes.

- *Creating a Demo Unlock is a good way to temporarily unlock DSD Enhancements off-hours, if you do not have web or email access. Later, you can unlock the product fully, during business hours.*

Manual Entry Unlock: If you want to unlock a single enhancement using a single encrypted key, you can select this option and enter the 64 character key you receive from DSD by copy and paste.

Note: You can also unlock a DSD Enhancement through the **DSD Enhancement Control Panel** found on the Library Master Utilities Menu. Then, select the Enhancement with your mouse from the list of Enhancements and click the **Unlock Product** button on the right side of the window.

7. **Convert Data:** After unlocking, the DSD Conversion Wizard will appear. Follow on-screen instructions to complete data conversion. *You can exit the conversion program without converting data. The Enhancement will not proceed, however, until data is converted. If you enter an enhanced program and data has not been converted, the conversion program will run again.*

DSD Enhancement Control Panel

Starting with version 3.61, all DSD Enhancement products include DSD's Enhancement Control Panel. The **DSD Enhancement Control Panel is accessed from the Library Master Utilities menu.**

The DSD Enhancement Control Panel is a simple to use yet powerful system to help maintain DSD Enhancements installed on a Sage 100 system. To use it, select an Enhancement product from the list on the window and then click the button, on the right side of the window, which corresponds with the desired task.

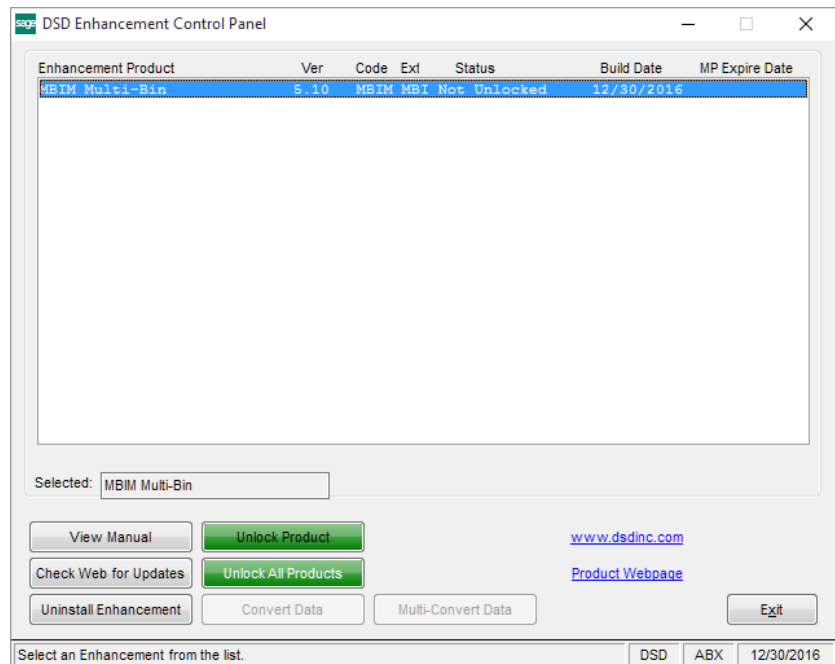
View Manual: This button will display the product manual for the selected Enhancement using Adobe Acrobat. For this to be possible, the PDF file for the corresponding manual must be in the "MAS90/PDF" folder in the Sage 100 system. If the file is not present, and the system has web access, the correct PDF file will be automatically downloaded from the DSD website, put into the "MAS90/PDF" folder and then displayed.

Check the Web for Updates: This button will check the DSD website to see what the current build is the selected Enhancement and alert the user if a later version is available. *This requires an internet connection on the Sage 100 system.*

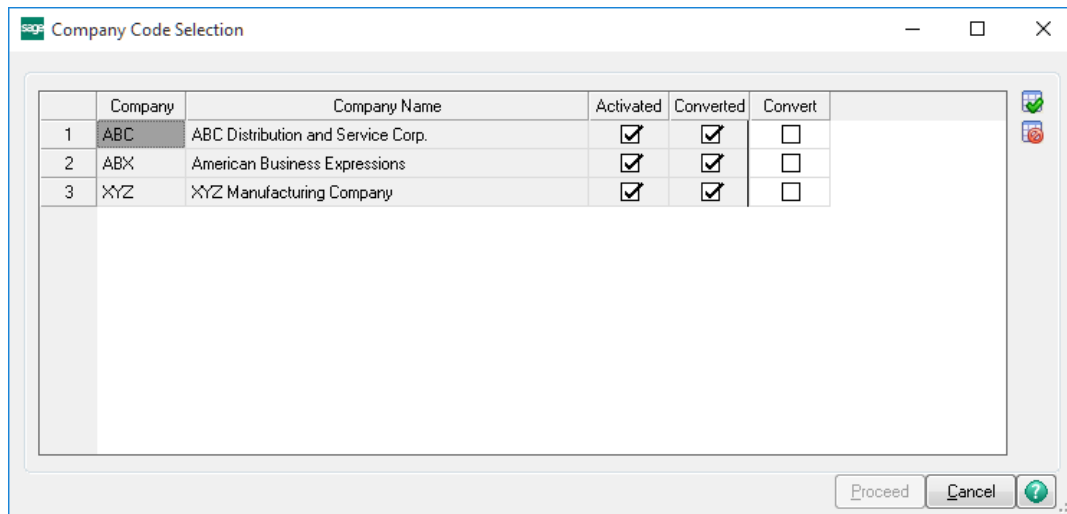
Unlock Product: This will cause the DSD Enhancement License Agreement and Activation window to appear. Using this window is described on the previous page. *This button is disabled if the selected Enhancement is already unlocked or if unlocking is not required.*

Unlock All Products: This will cause the DSD Enhancement All License Agreement and Activation window to appear. This window is similar to the one described on the previous page, but has only web and file as options to unlock. *This button is never disabled.*

Convert Data: After verification, the selected Enhancement's data conversion program will run. Data conversion is non-destructive, and may be triggered any number of times. Sometimes this is required to fix data records imported or updated from a non-enhancement installation.



Multi-Convert Data: Multiple Companies can be converted at the same time for a given Enhancement. *(If you have a large number of Companies to convert, please do in batches of 20 or fewer due to memory limitations.)*



Help: The Help button, located at the bottom right of the window, opens an HTML help file.

Get Adobe Acrobat: Opens the Adobe Acrobat website to the page where Acrobat can be downloaded and installed.

Uninstall Enhancement If this option is available, then selecting this button will start the un-install process, removing the enhancement from the system. (for more information see [Uninstall DSD Enhancements](#))

Section C: Setup

Upon completion of software installation, you will need to access the DSD Extended Solutions Setup from the Accounts Receivable Setup menu. Select this part number and the Setup screen for this Extended Solution will appear. Check the 'Enable Extended Solution' box to activate this Extended Solution.

AR-1032 Setup Options

AR-1032 Consolidated Statement

Enable DSD Extended Solution ☒ Level 7.40

Accept Cancel

DSD ABC 1/26/2026

You should visit this Setup screen after each upgrade or reinstallation of this Extended Solution.

Role Maintenance

The following Task has been added to Accounts Receivable, Setup Options:

- Extended Solutions Setup

The following Task has been added to Accounts Receivable, Reports/Forms

- Consolidated Sales History Report

Please review your security setup in Role Maintenance and make appropriate changes.

Parts of this document may refer to the Specific Purpose Rule. When referenced, the described feature was developed for a specific client to its specifications and may not conform to generally accepted Sage 100 standards and procedures. These features may or may not benefit you in your application of Sage 100.

Section D: System Operations

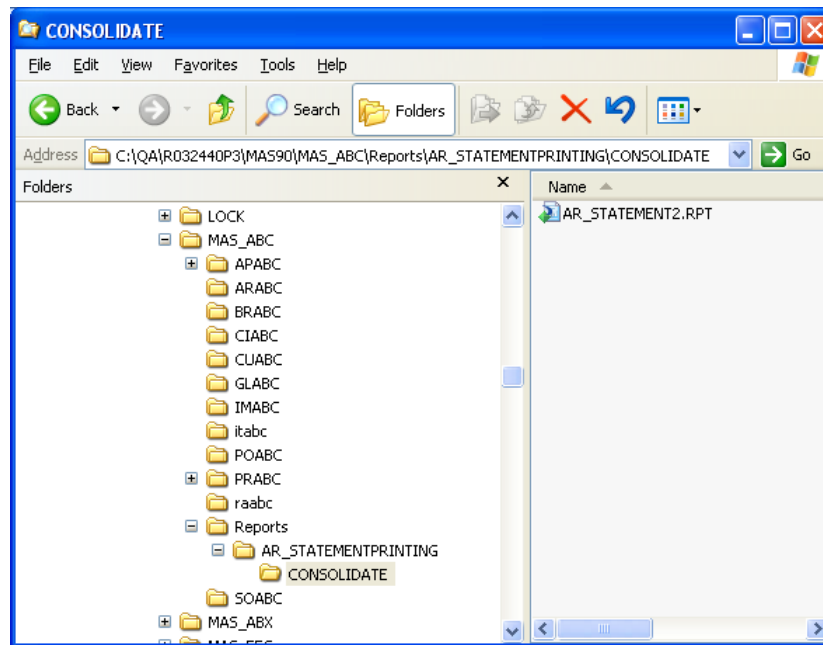
Statement Printing has been modified with two new Sort Statement By options: 'Consolidate Customers' and 'Consolidate Sort Fields'.

If you select the sort option 'Consolidated Sort Fields' all blank sort fields will be consolidated into one statement. To prevent blank sort fields from consolidating into one statement you need to select specific sort fields.

Select Field	Operand	Value
Statement Cycle	All	
Customer Number	All	
Customer Name	All	
Salesperson	All	

For Consolidated Customers, it is assumed that you maintain A/R divisions and that the customer numbers to be consolidated differ only by the division number. Therefore when you select to consolidate by customer number, the receivables data for customer numbers 01-ABF, 02-ABF and 03-ABF would be consolidated into a single statement.

An Accounts Receivable Statement Form has been provided that incorporates the new consolidations. It is called **AR1032_234AR_Statement2.rpt** and can be found in the '...\mas90\reports' directory. You will need to create a new Form Code for your Statement Form. In the Form Code Field, enter a new name (e.g Consolidate) and select the 'Plain' template, then click the 'Designer' button and then close Crystal Reports. Copy AR1032_001AR_Statement2.rpt to the new form setting directory (e.g CONSOLIDATE), see below and rename it to AR_Statement2.rpt.



The consolidated statements use the constant information from the first customer record found for each consolidation (i.e., the lowest division number or customer number). The invoice and payment detail is listed in division field order if consolidating by customer and in customer number order when consolidating by sort field.

Page: 1					
Statement					
ABC Distribution and Service Corp.			Statement Date: 12/23/2010		
			Salesperson: Shelly Westland		
Avnet Processing Corp 3361 W. Kenosha Powers Building Suite 100 Racine, WI 53120 Contact: Tony Schultz			Customer Number: AVNET		
			Credit Limit:	7,500.00	
			Credit Available:	122.63	
Date	Reference	Description	Charge	Credit	Balance
01-AVNET					
3/31/2010	0000142-IN		1,751.00		1,751.00
4/30/2010	APR0002-FC	Finance Charge	44.12		44.12
5/21/2010	0100043-IN		1,935.25		
5/31/2010		Payment Ref: 683245		1,000.00	935.25
5/29/2010	0000170-IN		4,041.00		4,041.00
5/31/2010	0000192-IN		606.00		606.00
			8,377.37	1,000.00	7,377.37
02-AVNET					
5/29/2010	0000173-IN	Ship AS AP	4,366.20		4,366.20
5/31/2010	0000199-IN	Ship AS AP	4,366.20		4,366.20
			8,732.40	0.00	8,732.40

Page: 1

Statement

ABC Distribution and Service Corp.

Statement Date: 12/23/2010
Salesperson: Shelly Westland

Avnet Processing Corp
3361 W. Kenosha
Powers Building
Suite 100
Racine, WI 53120
Contact: Tony Schultz

Sort Field: AVNET
Credit Limit: 7,500.00
Credit Available: 122.63

Date	Reference	Description	Charge	Credit	Balance
01-AVNET					
3/31/2010	0000142-IN		1,751.00		1,751.00
4/30/2010	APR0002-FC	Finance Charge	44.12		44.12
5/21/2010	0100043-IN		1,935.25		
5/31/2010		Payment Ref: 683245		1,000.00	935.25
5/29/2010	0000170-IN		4,041.00		4,041.00
5/31/2010	0000192-IN		606.00		606.00
			8,377.37	1,000.00	7,377.37
02-AVNET					
5/29/2010	0000173-IN	Ship ASAP	4,366.20		4,366.20
5/31/2010	0000193-IN	Ship ASAP	4,366.20		4,366.20
			8,732.40	0.00	8,732.40
02-CAPRI					
5/1/2010	0000206-IN		37,467.95		
5/31/2010		Credit Memo: 0000207		2,248.08	35,219.87
5/29/2010	0000174-IN	Special Order	10,474.73		10,474.73
5/31/2010	0000203-IN	Special Order	10,474.73		10,474.73
			58,417.41	2,248.08	56,169.33

No division break titles or totals will print if there is activity for only one division.

Consolidated Customer Sales History Report

This report can be found on the Accounts Receivable Reports menu; it is modeled after the Sales Order 'Customer Sales History report' in the Sales Order module. You will be prompted for a range of divisions and a range of customers. This report summarizes sales activity per period in dollars for like customer numbers across all divisions. It will only reflect invoices whose data source is Sales Order. See *Specific Purpose Rule*.

Consolidated Customer Sales History Report

Selection

All

Starting

Ending

Division

☒

00

99

Customer Number

☒

////

\\dsd1\HP 4100 PCL 6

Print

Preview

Printer Setup...

Check this box to print all invoices

ABC

12/22/2010

```
Run Date: 12/23/2010          ABC Distribution and Service Corp.          Page: 1
A/R Date: 12/23/2010          Consolidated Customer Sales History Report      Time: 11:49 AM

+-----DOLLARS SOLD-----+      YEARLY
+---PER 1---PER 2---PER 3---PER 4---PER 5---PER 6---PER 7---PER 8---PER 9---PER 10---PER 11---PER 12---TOTAL

ABF  American Business Futures
      8,810      21,468              35              30,314

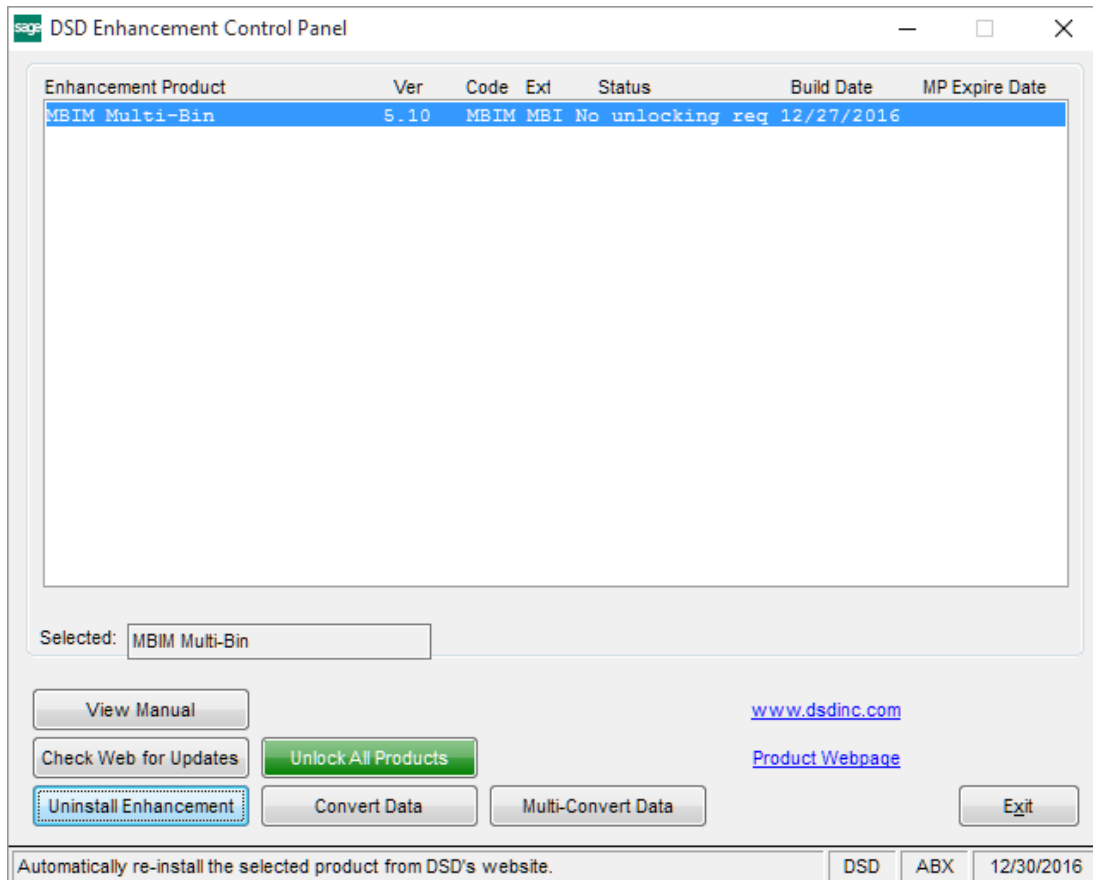
ALLENAP  Allen's Appliance Repair
      354          692              1,046

AUTOCR  Autocraft Accessories
      33,041      6,534              39,575

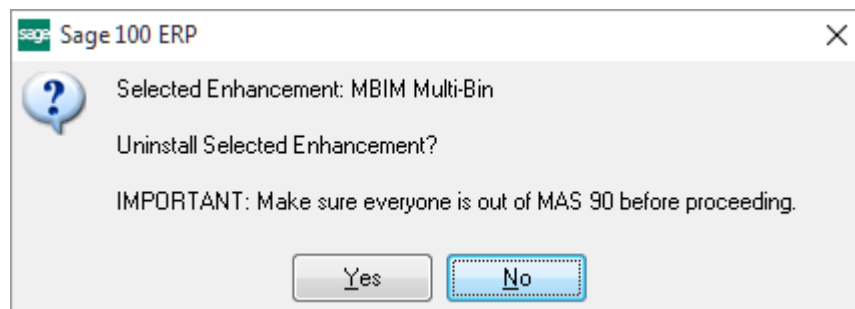
AVNET  Avnet Processing Corp
      16,412      6,907              23,320
```

Section E: Uninstall DSD Enhancements

A DSD Enhancements Uninstall Utility has been provided for the purposes of removing DSD Enhancements from your Sage 100 System. This utility may be accessed from the **DSD Enhancement Control Panel** menu option on the **Library Master / Utilities** menu.

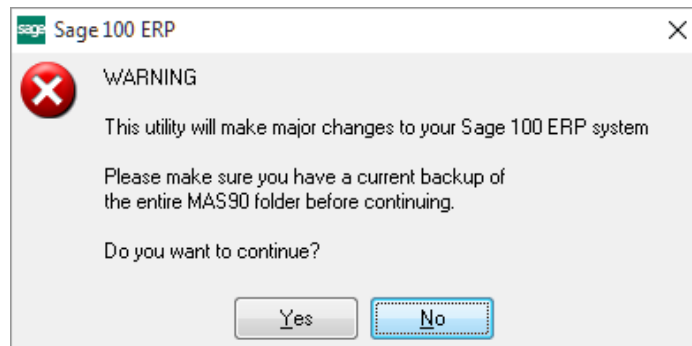


When accessing the **DSD Enhancement Control**, select the enhancement that you wish to Uninstall, and then select the **Uninstall Enhancement** button. The following message box will appear:



Select **No** to exit the Uninstall Process.
Select **Yes** to continue with the Uninstall Process.

The following message box will appear, to remind you that a complete backup of your entire Sage 100 system should be completed prior to uninstalling a DSD product.



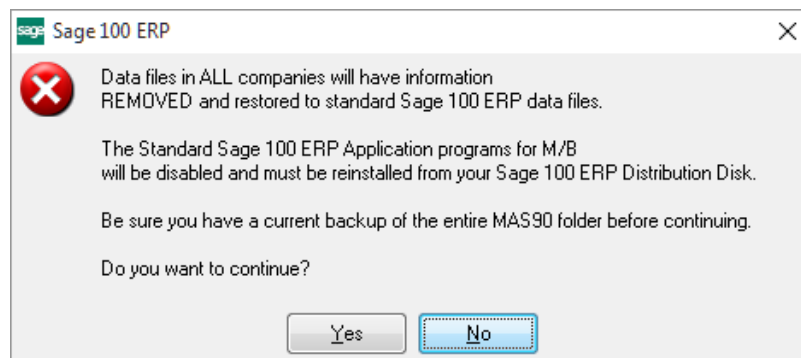
Select **No** to exit the Uninstall Process.
Select **Yes** to continue with the Uninstall Process.

After the Uninstall of the DSD Enhancement, you MUST reinstall certain standard Sage 100 modules, followed by reinstallation of Product Updates and Hot Fixes, if applicable.

A message box will appear, and will display which of those specific Sage 100 modules you must reinstall afterwards.

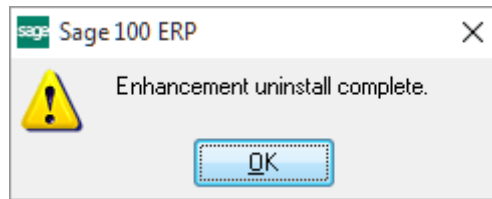
Select **No** to exit the Uninstall Process.
Select **Yes** to continue with the Uninstall Process.

The following message box will appear, displaying the final warning message.



Select **No** to exit the Uninstall Process.
Select **Yes** to continue with the Uninstall Process. At this point, the DSD Enhancement will be removed from the Sage 100 system.

After completion of the Uninstall, the following message box will appear. Select OK to continue.



Now that the Uninstall process is completed, you must:

- Reinstall the applicable standard Sage 100 modules
- Reinstall the latest Sage 100 Service Pack/Updates, if applicable.
- Reinstall any other DSD Enhancements or Developer products that are affected from the reinstallation of the standard Sage 100 module(s).
- are affected from the reinstallation of the standard Sage 100 module(s).