



DSD Business Systems

Sage 100 Enhancements

POMC

Purchase Order Multi-Currency

Version 7.20



Information in this document is subject to change without notice.

Copyright 1993-2023, DSD Business Systems All rights reserved.

Purchase Order Multi-Currency User's Manual
Version 7.20

26 June, 2023
DSD Business Systems
8787 Complex Drive
Suite 400
San Diego, CA 92123

858/550-5900 8:00am to 5:00pm PST
858/550-4900 Fax

Trademarks

ProvideX® is a Trademark of Sage Software.

Windows is a trademark of Microsoft Corporation.

Sage 100® is a registered trademark of Sage Software.

PXPlus® is a registered trademark of PVX Plus technologies

All other product names and brand names are service marks, and/or trademarks or registered trademarks of their respective companies.

This documentation and the software described herein, is prepared and published under license. Sage Software has not tested or verified either the software or any representation in this documentation regarding the software. Sage Software does not make any warranty with respect to either this documentation or the software described herein, and specifically disclaims any warranty, express or implied, with respect hereto, including the warranties of fitness for a particular purpose and merchantability.

Table of Contents

SECTION A: INTRODUCTION	5
WEB RESOURCES	5
SUPPORT	5
PURCHASE ORDER MULTI-CURRENCY FEATURES.....	7
REPORTS	7
SECTION B: GETTING STARTED	9
REQUIRED LEVELS.....	9
INSTALLATION	9
DSD ENHANCEMENT CONTROL PANEL	11
SECTION C: SETUP	14
CONVERSION NOTES	14
MULTI-CURRENCY PURCHASE ORDER PROCESSING SETUP	14
VENDOR PRICE LEVEL MAINTENANCE.....	15
PRICE LEVEL PRECEDENCE	16
SECTION D: SYSTEM OPERATIONS	17
AUTO REORDER SELECTION	17
AUTO GENERATE FROM SALES ORDERS.....	18
PURCHASE ORDER ENTRY.....	19
PURCHASE ORDER LINE ENTRY.....	20
PURCHASE ORDER PRINTING	21
RECEIPT OF GOODS/INVOICE ENTRY	21
RECEIPT OF INVOICE - TOTALS SCREEN	21
RECEIPT OF GOODS – LANDED COSTS.....	22
RECEIPT REGISTERS/UPDATE.....	22
P.O. RECEIPT/INVOICE VARIANCE REGISTER.....	22
RETURN OF GOODS ENTRY	22
RECEIPT HISTORY INQUIRY.....	23
PURCHASE ORDER INQUIRY	23
SECTION E: REPORTS	24
STANDARD REPORTS	24
SECTION F: UNINSTALL DSD ENHANCEMENTS	25
LICENSE AGREEMENT	28

FAX TRANSMITTAL FORM

30

Section A: Introduction

This manual contains a description and instructions for this DSD product. Operating instructions are included for the features added by this product to Sage 100. For instructions on using Sage 100, refer to the appropriate Sage 100 manual, or call your Sage 100 reseller. DSD Business Systems offers excellent Sage 100 support, at an hourly rate.

Web Resources

DSD web site: <http://www.dsdinc.com>

The Enhancement page contains:

- Current Release Schedule*
- Purchasing Information*
- Installation Instructions*
- Product Support*
- Enhancement Links*

POMC Purchase Order Multi-Currency:

<http://www.dsdinc.com/enhancement/purchase-order-multi-currency-4/>

The product web page contains:

- Product Description*
- Web Links*
- Current Product Version Table*
- Product Installation File Download*
- Product Manual in .pdf Format*
- Revision History*
- FAQ*

Support

DSD provides product support through Sage 100 resellers. Support is provided for the current version. Older versions are supported at an hourly rate. DSD's telephone number is **858-550-5900**. Fax: **858-550-4900**.

For a hard error, where the program displays an error dialog, report:

- Error number.*
- Program name.*
- Line number.*
- Program version.*
- Exact sequence that caused the error, including menus and menu selections.*

Other pertinent information.

If leaving a message or faxing, please include:

Your name.

Your phone number (and fax if applicable) and extension.

It is possible to be unable to duplicate a problem, because of data corruption or because we have not exactly duplicated a particular operating environment. In such circumstances, we can only continue to try to fix the problem if we can either access the system with Symantec PCAnywhere or by some other means access or duplicate the system.

Purchase Order Multi-Currency Features

- **Foreign Costs Maintenance:** Found in the Multi-Currency Main Menu, establish the Standard Cost for any Item in any Currency to be the default Unit Cost in the Currency of the Purchase Order.
- **Automatic Reorder and Auto Orders by Vendor's Currency:** Generate Automatic Reorder and Auto Order Purchase Orders only for Vendors with a specific Default Entry Currency.
- **Generate Automatic Purchase Orders in Vendor or Base Currency:** Specify if you want to generate the Purchase Orders in the Vendor's Default Entry Currency or in Base Currency.
- **Use Foreign or Base Costs and Breaks:** You may generate the Transaction Currency Purchase Orders using the Foreign Costs and Breaks set up for the Vendors and Items selected or you may select to convert the Base Costs and Breaks to the Purchase Order Transaction Currency.
- **Enter Transactions in Any Currency:** You may enter Purchase Orders, Receipt of Goods, Receipt of Invoice and Return of Goods in the Vendor's Default Entry Currency, or you may change the Transaction Currency to any other established Currency.
- **Enter Transactions using Any Exchange Rate:** You may use the currency Exchange Rate as of the transaction date or you may override the Exchange Rate.
- **Registers in Base and Entry Currency:** For audit purposes, the Multi-Currency system prints Purchase Order Registers and Journals in both the Entry Currencies and the Base Currency using the appropriate Exchange Rates.
- **Receipt History Display in Base or Entry Currency:** Receipt History amounts are displayed in Base Currency. They may also be displayed in Transaction Currency using the Currency Color specified in Currency Code Maintenance in General Ledger.
- **Print Reports in Any Currency:** Print any report in Base, Vendor, Entry or Other Currency, using As Posted or Current Amounts, in Buy, Sell, or an Override Rate.

Reports

The following reports are modified for the **Multi-Currency Purchase Order Processing** module:

- Ship To Address Code Listing
- P/O Vendor Price Level Listing
- M/C Automatic Reorder Register
- M/C Auto Generate Purchase Orders Register
- Purchase Order Printing
- M/C Receipt of Goods Register
- M/C Receipt of Invoice Register
- M/C Daily Purchases Journal
- Daily Transaction Register
- Return Order Printing
- M/C Return Order Register

- Material Requisition Register
- Open Purchase Order Report
- Open P.O. by Item Report
- Open P.O. by Job Report
- Expected Delivery Report
- Cash Requirements Report
- Purchase Order Recap
- Receipt History Report
- Purchase History Report
- General Ledger Posting Recap

Section B: Getting Started



- **If you reinstall or upgrade one of the Sage 100 modules listed in the following table, you must also reinstall this Enhancement.**
- Enhancements from different Sage Developers are generally not designed to work together. If installed together, problems are likely to occur.
- **Check with DSD before installing more than one Enhancement.**

Required Levels

Sage 100 Module	Module Required	Required Level
P/O	Y	7.20
APMC	Y	7.20
CUMC	Y	7.20
IMMC	N	7.20
BRMC	N	7.20
B/C (Bar Code)	N	7.20

Installation

1. **Back-up:** Exit all Sage 100 sessions. Back-up existing Sage 100 data.
2. **Check Levels:** Sage 100 module levels **must match** those listed above.
3. **Run Enhancement Setup Program:** Save the executable installation program (sent to you or downloaded from our website) in a convenient location on the Sage 100 server. Launch the program from Windows Explorer or by selecting Start/Run, and then browse for the file in the location you saved it. Follow on-screen instructions.
4. **Send your Sage Serial Number to your DSD Representative:** Send your Sage Serial Number to your DSD representative in order for us to send you back the encrypted keys to unlock your system. This serial number can be found in Library Master\Setup\System Configuration, Tab 3. Registration as Serial Number.
5. **Re-Start Sage 100:** Sage 100 will be updated.
6. **Unlock the Enhancement:** DSD Enhancements must be unlocked to run. When any part of the Enhancement is run for the first time, the **DSD Enhancement License Agreement and Activation** window will appear. Follow the steps shown on that window. *You can click the Help button for more detailed instructions.*

Note: On the next page is a screenshot of the DSD Enhancement License Agreement and Activation window.

After accepting the License Agreement, you can then select the type of unlocking that you'd prefer. The choices are File, Web, Demo and Manual Entry.

File Unlock: After receiving your encrypted serial number key file from DSD, and placing that file in the MAS90/SOA directory, selecting this option will unlock all products keys contained in the file. This means you can unlock all enhancements at once using this option.

Web Unlock: If the system that is running the DSD Enhancement *has web access* and you *have sent DSD your Sage Serial number*, you can unlock the Enhancement without assistance using Web Unlock. When this option is selected, the program will attempt to download encrypted serial number key file from DSD and then proceed to unlock all enhancements contained in the file.

- The Sage 100 system that is being used must have web access for this option to be effective.
- You can send your Sage Serial Number to your DSD Enhancements sales representative.

Demo Unlock: If a Demo mode is available for the Enhancement you're running, you will be able to Demo unlock the product without assistance from DSD for demo purposes.

- Creating a Demo Unlock is a good way to temporarily unlock DSD Enhancements off-hours, if you do not have web or email access. Later, you can unlock the product fully, during business hours.

Manual Entry Unlock: If you want to unlock a single enhancement using a single encrypted key, you can select this option and enter the 64 character key you receive from DSD by copy and paste.

Note: You can also unlock a DSD Enhancement through the [DSD Enhancement Control Panel](#) found on the Library Master Utilities Menu. Then, select the Enhancement with your mouse from the list of Enhancements and click the **Unlock Product** button on the right side of the window.

7. **Convert Data:** After unlocking, the DSD Conversion Wizard will appear. Follow on-screen instructions to complete data conversion. You can exit the conversion program without converting data. The Enhancement will not proceed, however, until data is converted. If you enter an enhanced program and data has not been converted, the conversion program will run again.

DSD Enhancement Control Panel

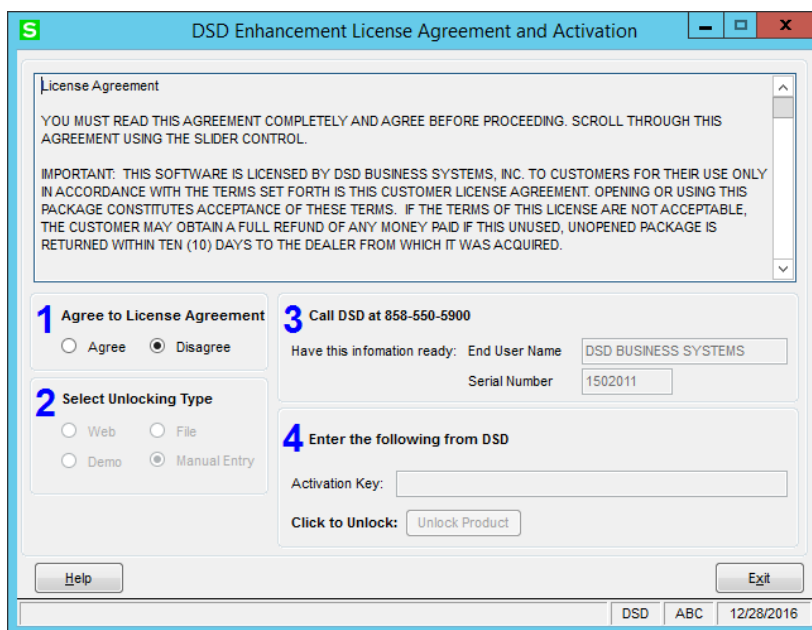
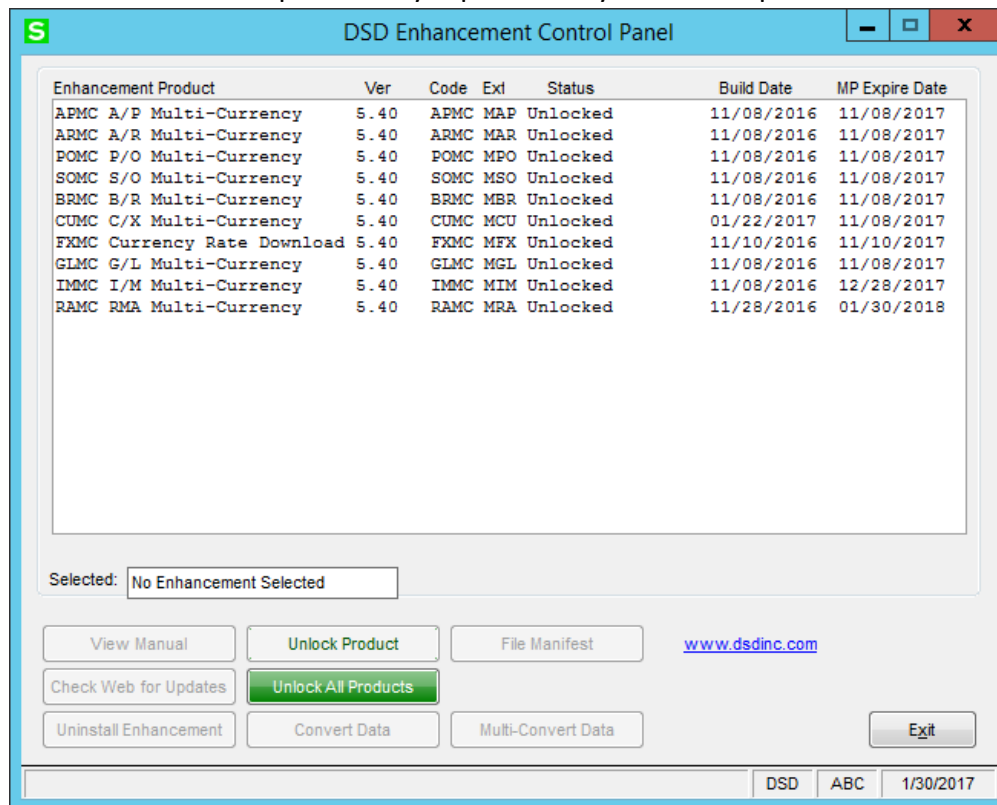
Starting with version 3.61, all DSD Enhancement products include DSD's Enhancement Control Panel. The **DSD Enhancement Control Panel is accessed from the Library Master Utilities menu.**

The DSD Enhancement Control Panel is a simple to use yet powerful system to help maintain DSD Enhancements installed on a Sage 100 system. To use it, select an Enhancement product from the list on the window and then click the button which corresponds with the desired task.

View Manual: This button will display the product manual for the selected Enhancement using Adobe Acrobat. For this to be possible, the PDF file for the corresponding manual must be in the "MAS90/PDF" folder in the Sage 100 system. If the file is not present, and the system has web access, the correct PDF file will be automatically downloaded from the DSD website, put into the "MAS90/PDF" folder and then displayed.

Check the Web for Updates: This button will check the DSD website to see what the current build is the selected Enhancement and alert the user if a later version is available. *This requires an FTP web connection on the Sage 100 system.*

Unlock Product: This will cause the DSD Enhancement License Agreement and Activation window to appear. Using this window is



described on the previous page. *This button is disabled if the selected Enhancement is already unlocked.*

Unlock All Products: This will cause the DSD Enhancement All License Agreement and Activation window to appear. This window is similar to the one described on the previous page, but has only web and file as options to unlock. *This button is never disabled.*

Convert Data: After unlocking, if Conversion has not been done, the Convert Data button can be pushed and the Enhancement data conversion program will run. Data conversion is *non-destructive*, and may be triggered any number of times. **However, this must be completed before any Multi-Currency processing is allowed in the respective module.** *Sometimes this is required to fix data records imported or updated from a non-enhancement installation.*

This conversion can also be triggered by launching a task in any Multi-Currency module that has not been previously converted. Conversions for more than one company at a time can be done using Multi-Convert Data below.

DSD Conversion Wizard: Step One, Introduction



This company's data needs to be converted.
This program will perform the conversion.

Cancel

Next

DSD Conversion Wizard: Step Two, Preparation

Get ready by doing the following:

- 1) Make SURE that you have a backup of your data.
- 2) This conversion may take a while depending on the amount of data that has to be converted. Please make sure that you start this conversion at a time when you do not need to use your system.
- 3) All users MUST be logged out of Sage 100.

Cancel

Back

Next

Multi-Convert Data: Multiple Companies can be converted at the same time for a given Enhancement. If a Base Currency Code has not been assigned, it must be entered here before the Conversion is allowed. *(If you have a large number of Companies to convert, please do in batches of 20 or fewer due to memory limitations.)*

	Company	Company Name	Activated	Converted	Base Currency	Convert
1	AB1	ABC Multi-Currency CAD 5.20P3	<input checked="" type="checkbox"/>	<input checked="" type="checkbox"/>	CAD	<input type="checkbox"/>
2	AB2	ABC Multi-Currency Consolidation 5.20P3	<input checked="" type="checkbox"/>	<input checked="" type="checkbox"/>	USD	<input type="checkbox"/>
3	ABC	ABC Multi-Currency USD 5.20P3	<input checked="" type="checkbox"/>	<input checked="" type="checkbox"/>	USD	<input type="checkbox"/>
4	ABX	American Business Expressions	<input checked="" type="checkbox"/>	<input checked="" type="checkbox"/>	USD	<input type="checkbox"/>
5	EEC	Edwardson Electric Company	<input checked="" type="checkbox"/>	<input type="checkbox"/>		<input type="checkbox"/>
6	MFG	MFG Computer Systems, Inc	<input checked="" type="checkbox"/>	<input type="checkbox"/>		<input type="checkbox"/>
7	XYZ	XYZ Manufacturing Company	<input checked="" type="checkbox"/>	<input type="checkbox"/>		<input type="checkbox"/>

Help: The Help button, located at the bottom right of the window, opens an HTML help file.

Get Adobe Acrobat: Opens the Adobe Acrobat website to the page where Acrobat can be downloaded and installed.

Uninstall Enhancement If this option is available, then selecting this button will start the un-install process, removing the enhancement from the system. (for more information [see Uninstall DSD Enhancements](#))

There is also a link to the DSD website.

Section C: Setup

Conversion Notes

The best choice is to do all conversions in the [DSD Enhancement Control Panel](#), as in the previous page above.

The system will designate the following values for each transaction converted from an existing Sage 100 System:

1. Entry Currency = Base Currency
2. Entry Rate = 1

IMPORTANT: Follow the Multi-Currency Startup process for each module installed before entering Multi-Currency transactions.

Multi-Currency Purchase Order Processing Setup

Data You Need

Before beginning the Multi-Currency Startup process, you should have the following information assembled and available for use:

- ◆ List of Foreign Purchase Addresses.
- ◆ List of Foreign Price Levels.
- ◆ Repeating and Master Orders in their corresponding Entry Currencies.

A **Currency Button** in all the Multi-Currency related screen prompts. Select this button to access the Multi-Currency fields via a pop-up panel.

Most screens have been modified to display on the bottom of the screen the Currency of amounts being displayed or entered.

Vendor Price Level Maintenance

Vendor Price Level Maintenance allows the entry of Vendor Price Levels by Currency. The Price Levels for Foreign Currencies use the Foreign Costs entered through the Foreign Price/Cost Maintenance option on the Multi-Currency module’s Main Menu. The modified screen looks as follows:

Vendor No.

01-AIRWAY

Copy From...

Name

Airway Property

Pricing Type

Item Code

Currency Code

CAD

Item Code

1001-HON-H252

HON 2 DRAWER LETTER FLE W/O LK

Pricing Method

Cost Discount Amount

CAD Cost

20.000

Step	From Quantity	To Quantity	Discount Amount
1	1	99,999,999	4.000
2			
3			
4			
5			
6			
7			
8			

Accept

Cancel

Delete

Vendor Number: Enter a Vendor Number. Select the Lookup Button to list all vendors on file. Select the Search Button to list all transactions on file.

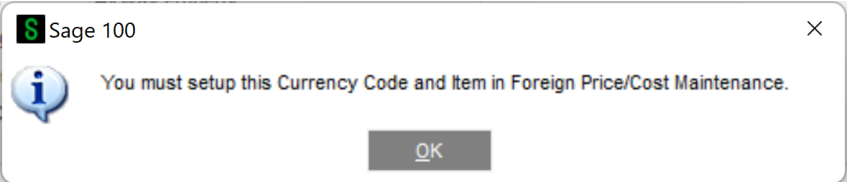
Pricing Type: Enter Item Code.

Currency Code: Enter a Currency Code. Select the Lookup Button to list all Currency Codes on file. This field will default to the Base Currency Code. This field will be disabled if the Inventory Multi-Currency enhancement is not installed.

Item Number: Enter an Item Number or select the Lookup Button to list all Item Numbers on file.

Once an Item is selected, the Foreign Cost for the selected Currency and Item will be displayed next to the Pricing Method. The calculation of Price Levels will be based on the Foreign Cost displayed. Any amount entered in this screen will be considered to be in the selected Currency.

The system will display the following message if a Foreign Cost for the selected Currency and Item has not been set up in the Foreign Price/Cost Maintenance program on the Multi-Currency module’s Main menu.



Note: Please refer to the *Inventory Management Multi-Currency Manual* for the detailed description of the *Foreign Price/Cost Maintenance* program.

Price Level Precedence

The system will consider the following order to determine the correct Item cost:

1. Price Level for Vendor + Entry Currency + Item
2. Price Level for Vendor + Entry Currency + Product Line
3. Price Level for Vendor + Entry Currency
4. Price Level for Vendor + Base Currency + Item
5. Price Level for Vendor + Base Currency + Product Line
6. Price Level for Vendor + Base Currency

For cases 2 and 3 above, the Price Levels for the specified currency will only take effect for the items for which you have set up a Foreign Cost in Foreign Price/Cost Maintenance on the Multi-Currency module's Main menu.

Any Price Levels set up in Base Currency will be used for any non-defined Foreign Price Level. In such a case, the system will calculate the Foreign Price Level by converting the Base Cost using the Purchase Order's Exchange Rate.

Section D: System Operations

Auto Reorder Selection

Auto Reorder Selection has a **Currency Button**. Select this button to access the **Multi-Currency Settings** screen.

Purchase Order Currency: Select **Vendor Default Currency** to generate Purchase Orders in the Vendor's Default Entry Currency. Select **Base Currency** to generate the Orders in Base Currency. This field will default to **Vendor Default Currency**.

Purchase Order Date: Enter a Purchase Order date. This date will be used to look up the Exchange Rate for the Purchase Order Currency from Currency Code Maintenance. This field will be displayed only if you selected **Vendor Default Currency** as the **Purchase Order Currency**.

Use Foreign Costs: Select this check box to use the Foreign Costs setup in Foreign Price/Cost Maintenance on the Multi-Currency module's Main menu. Clear this check box to convert the Base costs to the Entry Currency using the Purchase Order Exchange Rate. This field will be displayed only if you selected **Vendor Default Currency** as the **Purchase Order Currency**.

Use Foreign Breaks: Select this check box to use the Foreign Price Levels. . Clear this check box to use only the Base Currency Price Levels. This field will be displayed only if you selected the **Use Foreign Costs** check box.

Vendor Default Currency: Select the **All** check box to select Items supplied by Vendors with all Default Entry Currencies, or enter a range of Currencies for a specific group of Vendor Default Entry Currencies. Select the Lookup Button to list all Currencies on file.

Auto Generate from Sales Orders

The Auto Generate Purchase Orders Selection has a **Currency Button**. Select this button to access the **Multi-Currency Settings** screen:

Purchase Order Currency: Select **Vendor Default Currency** to generate Purchase Orders in the Vendor's Default Entry Currency. Select **Base Currency** to generate the Orders in Base Currency. This field will default to **Vendor Default Currency**.

Purchase Order Date: Enter a Purchase Order date. This date will be used to find the Exchange Rate for the Purchase Order Currency. This field will be displayed only if you selected **Vendor Default Currency** as the **Purchase Order Currency**.

Use Foreign Costs: Select this check box to use the Foreign Costs setup in the Foreign Price/Cost Maintenance program on the Multi-Currency module's Main menu. Clear this check box to convert the Base costs to the Entry Currency using the Purchase Order Exchange Rate. This field will be displayed only if you selected **Vendor Default Currency** as the **Purchase Order Currency**.


Use Foreign Breaks: Select this check box to use the Foreign Price Levels. . Clear this check box to use only the Base Currency Price Levels. This field will be displayed only if you selected the **Use Foreign Costs** check box.

Vendor Default Currency: Select the **All** check box to select all Vendor Default Entry Currencies, or enter a range of Currencies for a specific group of Vendor Default Entry Currencies. Select the Lookup Button to list all Currencies on file.

Purchase Order Entry

Purchase Order Entry allows the entry of Purchase Orders in Foreign Currencies using the appropriate Exchange Rate. The Vendor and Ship to Countries may be maintained.

The Purchase Order Entry Header Panel includes a **Currency Button**. Select this button to access the **Multi-Currency Settings** screen:



Entry Currency: Enter the Entry Currency Code for the order. Select the Lookup Button to list all Currency Codes on file. The system will ask you for the Supervisor Password if one was set up in General Ledger.

Note: *If amounts have already been entered, and the currency is changed, then the Order amounts remain the same and will be considered to be in the new currency.*

This field will not be accessible if the **Allow Currency Change** flag is not checked for the Vendor in Vendor Maintenance.


Exchange Rate: Enter the Exchange Rate for the order. The rate will default to the Exchange Rate found in Currency Code Maintenance for the Purchase Order Date. If the default Exchange Rate is overridden, then the order amounts remain the same and will be converted to Base Currency when posting to General Ledger using the new Exchange Rate.

The system will ask you for the Supervisor Password if one was set up in Multi-Currency Options. This field will not be accessible if the **Allow Rate Change** flag is not checked for the Vendor in Vendor Maintenance.

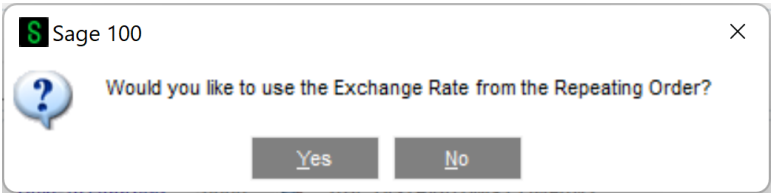
Drop ship Purchase Orders will be entered in Base Currency if the Multi-Currency Sales Order module is not installed.

Material Requisitions will be entered in Base Currency only.

When a Standard Purchase Order makes reference to a Master Order, the system will display the following message. Select **Yes** to use the original order Exchange Rate. Select **No** to use the Exchange Rate as of the new Purchase Order date.



When a Standard Purchase Order makes reference to a Repeating Order, the system will display the following message. Select **Yes** to use the original order Exchange Rate. Select **No** to use the Exchange Rate as of the new Purchase Order date.



Amounts posted to the Job Cost module will be converted to Base Currency.

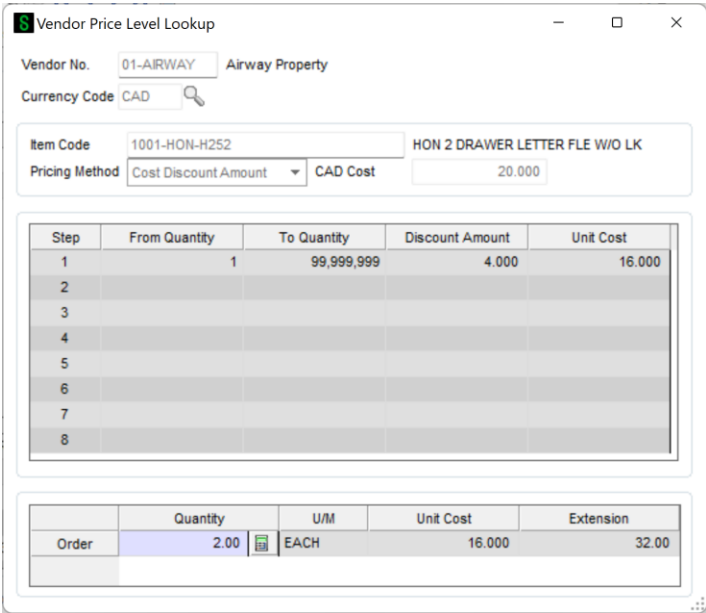
Purchase Order Line Entry

Purchase Order Line Entry calculates and displays the Item Costs in the Purchase Order Entry Currency.

Note: You may use Foreign Costs and Foreign Cost Levels as established through the Multi-Currency Inventory Module. This module is not required, but is needed to use Foreign Costing.

If you use the Multi-Currency Inventory module for Foreign Price/Costs, then the Vendor Price Level Lookup, accessed from the Purchase Order Lines Panel, will display Item Costs in the Order Currency.

The Vendor Price Level Lookup displays the Foreign Price Breaks, if any are set up in Price Level Maintenance.



Note: Please refer to the [Price Levels Precedence](#) section for a detailed explanation of Item Cost calculation.

Note: Please refer to the Inventory Management Multi-Currency module for an explanation of Foreign Prices and Levels.

Purchase Order Printing

Purchase Order Printing have additional currency fields available to print.

- POMC_234_EntryCurrency –The Entry Currency Code for the transaction
- POMC_234_EntryRate –The Exchange Rate for the transaction
- POMC_234_CurrencyName –The name of the Entry Currency
- POMC_234_CurrencySymbol –The Currency Symbol of the Entry Currency

If you do not see the new fields during the edit of the Crystal form, then select **Verify Database** from the **Database** dropdown menu to update your data dictionaries.

Receipt of Goods/Invoice Entry

Receipt of Goods entry allows the Receipt of Items in the Currency ordered using the Exchange Rate as of the Receipt Date. The **Currency Code** of the transaction is displayed at the bottom center. The Receipt of Goods/Invoice Entry Header Panel includes a **Currency Button**. Select this button to access the **Multi-Currency Settings** screen:



The screenshot shows a 'Multi-Currency Settings' dialog box. It has a title bar with a green 'S' icon and the text 'Multi-Currency Settings'. Inside the dialog, there are two input fields. The first is labeled 'Entry Currency' and contains the text 'CAD'. To the right of this field is a magnifying glass icon and the text 'Canadian Dollar'. The second input field is labeled 'Exchange Rate' and contains the value '1.35569000'. At the bottom right of the dialog is an 'OK' button.

Entry Currency: The Entry Currency is selected from the Purchase Order Currency and may not be changed.

Exchange Rate: Enter the Exchange Rate for the receipt. The rate will default to the Exchange Rate found in Currency Code Maintenance for the Receipt Date. If the default exchange rate is overridden, then the receipt amounts remain the same and will be converted to Base Currency when posting to General Ledger using the new Exchange Rate.

The system will ask you for the Supervisor Password if one was set up in Multi-Currency Options. This field will not be accessible if the **Allow Rate Change** flag is not checked for the Vendor in Vendor Maintenance.

Receipt Of Invoice - Totals Screen

Bank Code: When a C.O.D. Check is entered, the System will verify that the Bank's Currency for the Bank Code entered matches the Receipt of Invoice Currency. If the Currencies do not agree, the following message will be displayed:



When the Receipt of Invoice is updated the C.O.D. Check will post to the Accounts Payable and Bank Reconciliation modules in the Bank's Currency.

Receipt of Goods – Landed Costs

Although all costs in Receipt of Goods Entry are in the Entry Currency, you have the option of entering Landed Costs in either Base Currency OR Entry Currency. In the Multi-Currency Options - Main Panel, there is a checkbox called “**Currency for Landed Costs in PO.**” Select **Base Currency** to force entry of Landed Costs in Base Currency Only or **Entry Currency** to force entry of Landed Costs in the Receipt Currency Only.

Receipt Registers/Update

The Receipt of Goods Register, Receipt of Invoice Register and Daily Purchases Journal print in both Base Currency and Entry Currency.

P.O. Receipt/Invoice Variance Register

Whenever an Item Amount Received and Amount Invoiced in Base Currency are not the same for a completed Purchase Order, the system will generate a P.O. Receipt/Invoice Variance Register. This Register identifies and posts the difference between these two amounts to the appropriate General Ledger Accounts to correct the variance.

Because the Exchange Rates for a Purchase Order, Receipt of Goods and Receipt of Invoice may not be the same, the Base Currency amounts may vary, even though the Entry Currency amounts remain the same.

For the same reason, the Base Currency amounts may be the same between a Purchase Order, Receipt of Goods and Receipt of Invoice even when the Entry Currency amounts are not.

Return of Goods Entry

The Return of Goods program has been modified to Return Goods in the Currency received using the Exchange Rate as of the Return of Goods Date. The Vendor and Ship to Countries may be maintained. The Return of Goods Entry Header Panel has been modified to include a new **Currency Button**. Select this button to access the **Multi-Currency Settings** screen:



Multi-Currency Settings

Entry Currency: CAD Canadian Dollar

Exchange Rate: 1.35569000

OK

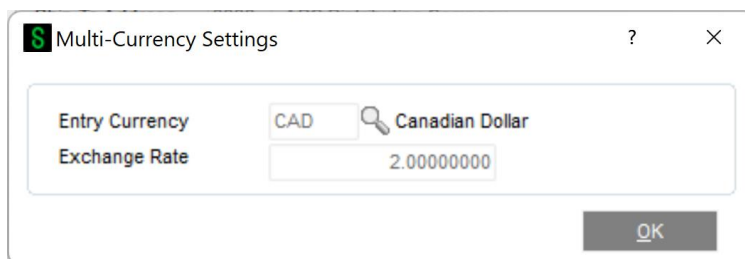
Entry Currency: The Entry Currency is selected from the Purchase Order Currency and may not be changed.

Exchange Rate: Enter the Exchange Rate for the return. The rate will default to the exchange rate found in Currency Code Maintenance for the Return Date. If the default exchange rate is overridden, then the return amounts remain the same and will be converted to Base Currency when posting to General Ledger using the new Exchange Rate.

The system will ask you for the Supervisor Password if one was set up in Multi-Currency Options. This field will not be accessible if the **Allow Rate Change** flag is not checked for the Vendor in Vendor Maintenance.

Receipt History Inquiry

Receipt History Inquiry allows the display of information in both **Base Currency** and **Entry Currency**. The Header Panel includes a **Currency Button**. Select this button to access the **Currency Code** and **Exchange Rate** of the transaction. In the Lines and Totals Panels there is a **Display Currency** selection to toggle display of these amounts.



Multi-Currency Settings

Entry Currency: CAD Canadian Dollar

Exchange Rate: 2.00000000

OK

The Currency of the Transaction is displayed at the bottom of the Receipt History Inquiry Panel.

Purchase Order Inquiry

Purchase Order Inquiry allows the display of information in both **Base Currency** and **Entry Currency**. The Header Panel includes a **Currency Button**. Select this button to access the **Currency Code** and **Exchange Rate** of the transaction. In the Lines and Totals Panels there is a **Display Currency** selection to toggle display of these amounts.

The Currency of the Transaction is displayed at the bottom of the Purchase Order Inquiry Panel.

These same options appear in **Purchase Order History Inquiry**.

Section E: Reports

Standard Reports

When printing any Purchase Order Reports, you may define the Currency and Exchange Rate to use. A new **Currency Button** has been added to the Report Panel, and when selected, the following screen will be displayed (This screen will vary slightly depending on the report being printed and the options entered):

The screenshot shows a window titled "Multi-Currency Reporting Options". It has a standard Windows-style title bar with a green icon, a minus sign, a maximize button, and a close button. The window is divided into several sections. On the left, there's a "Printing Currency" section with a dropdown menu currently showing "Entry". A tooltip or list is visible below it, showing options: "Entry", "Other", "Vendor", and "Rate Override". Below this is a "Printing Amounts" section with another dropdown menu. To the right of these is a "Currency Range" section containing two text input fields: "Starting Currency Code" and "Ending Currency Code". The "Ending Currency Code" field contains the text "ZZZZ". Both fields have a magnifying glass icon (lookup button) to their right. At the bottom right of the window are two buttons: "Accept" and "Cancel".

Printing Currency: Select **Base** for Base Currency, **Entry** for Transaction Currency, **Vendor** for Vendor Currency, **Other** for Other Currency, or **Rate Override** to enter an Override Rate.

Override Rate: Enter a Rate to be used when exporting amounts. This field will be displayed only if you selected **Rate Override** as the **Printing Currency**.

Starting and Ending Currency Code: Enter a range of Currencies for a specific group of transactions. Select the Lookup Button to list all Currencies on file. This field will be displayed only for reports that print amounts from individual transactions.

Currency Code: Enter the Currency Code in which to print all amounts. This field will be displayed only if you selected **Other** as the **Printing Currency** option.

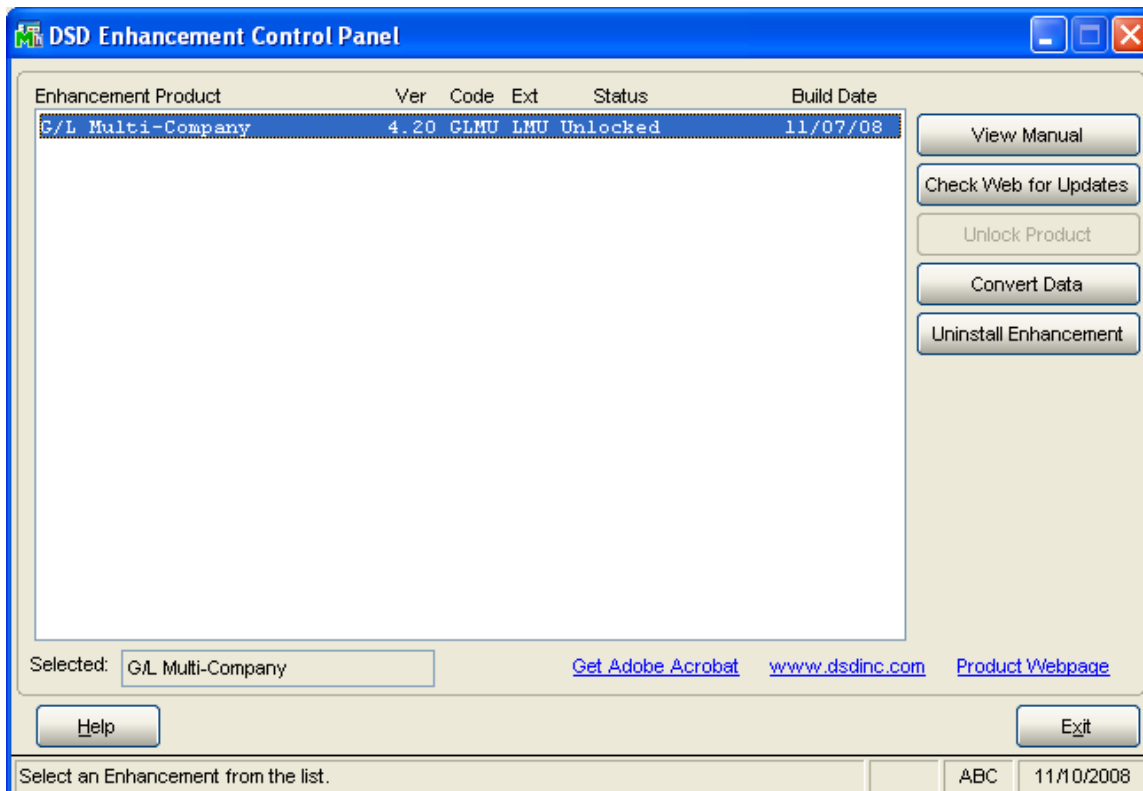
Printing Amounts: Select **As Posted** to import all amounts As Posted or **Override Date** to convert amounts using an Exchange Rate as of an Override Date (only when not in Base Currency).

Override Date: Enter a date to import amounts converted to the Printing Currency using the Exchange Rate as of this date. This field will be displayed only if you selected **Override Date** as the **Printing Amounts**.

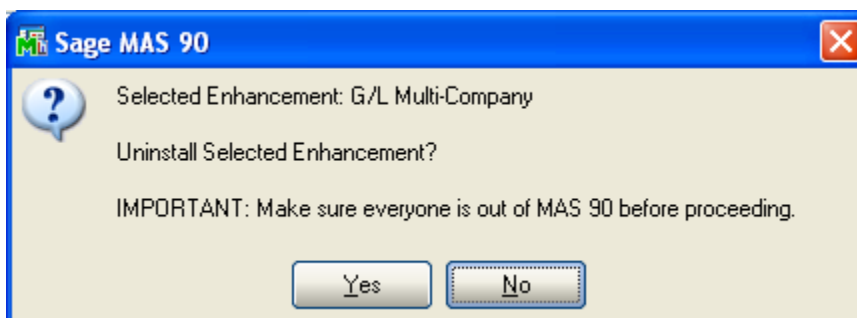
Rate Type: Select the column to be used from Currency Code Maintenance. This field will be displayed only if you selected **Override Date** as the **Printing Amounts**.

Section F: Uninstall DSD Enhancements

A DSD Enhancements Uninstall Utility has been provided for the purposes of removing DSD Enhancements from your Sage 100 System. This utility may be accessed from the **DSD Enhancement Control Panel** menu option on the **Library Master / Utilities** menu.

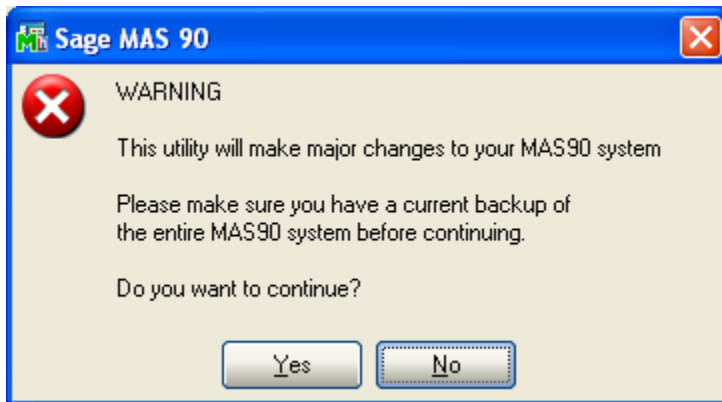


When accessing the **DSD Utility Suite**, select the enhancement that you wish to Uninstall, and then select the **Uninstall Enhancement** button. The following message box will appear:



Select **No** to exit the Uninstall Process.
Select **Yes** to continue with the Uninstall Process.

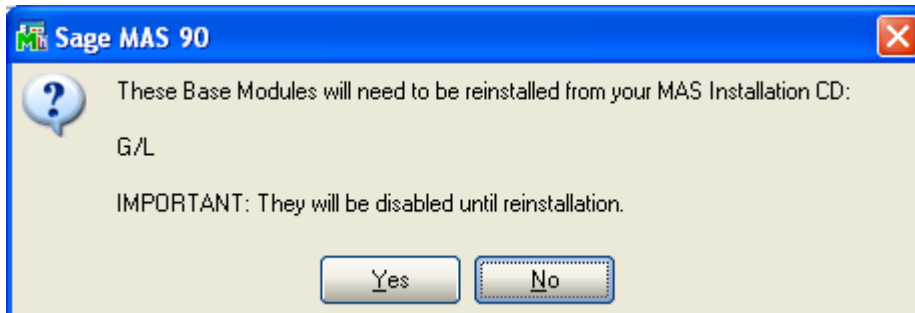
The following message box will appear, to remind you that a complete backup of your entire MAS90 system should be completed prior to uninstalling a DSD product.



Select **No** to exit the Uninstall Process.
Select **Yes** to continue with the Uninstall Process.

After the Uninstall of the DSD Enhancement, you MUST reinstall certain standard Sage 100 modules, followed by reinstallation of MAS Service Packs / Updates, if applicable.

The following message box will appear, and will display which of those specific Sage 100 modules you must reinstall afterwards.

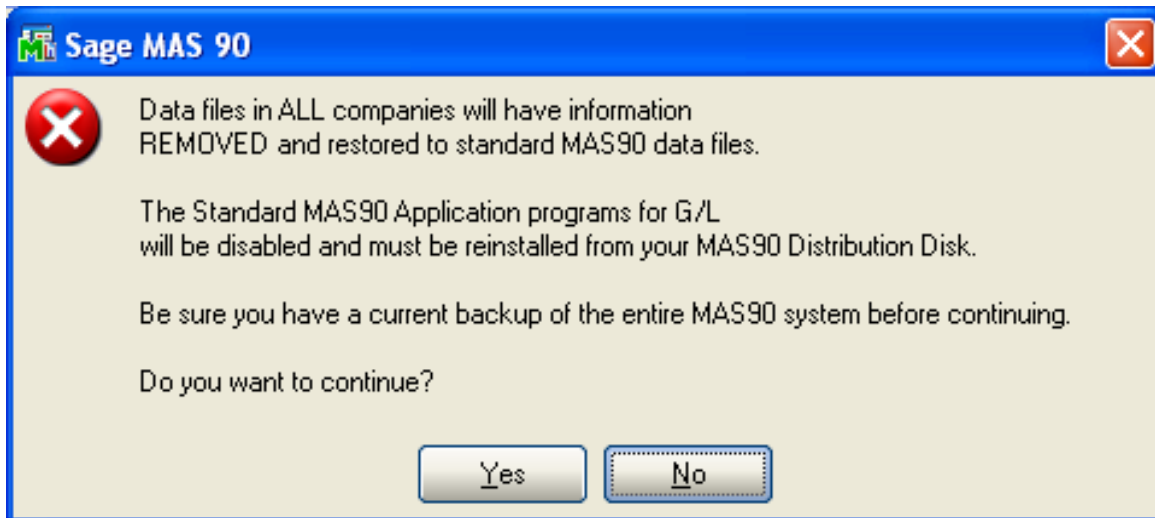


Select **No** to exit the Uninstall Process.
Select **Yes** to continue with the Uninstall Process.

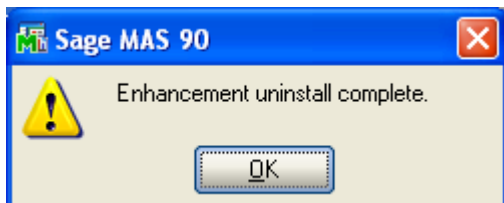
The following message box will appear, displaying the final warning message.

Select **No** to exit the Uninstall Process.

Select **Yes** to continue with the Uninstall Process. At this point, the DSD Enhancement will be removed from the Sage 100 system.



After completion of the Uninstall, the following message box will appear. Select OK to continue.



Now that the Uninstall process is completed, you must:

- Reinstall the applicable standard Sage 100 modules
- Reinstall the latest Sage 100 Service Pack/Updates, if applicable.
- Reinstall any other DSD Enhancements or Developer products that are affected from the reinstallation of the standard Sage 100 module(s).

License Agreement

IMPORTANT: THIS SOFTWARE IS LICENSED BY DSD BUSINESS SYSTEMS, INC. TO CUSTOMERS FOR THEIR USE ONLY IN ACCORDANCE WITH THE TERMS SET FORTH IN THIS CUSTOMER LICENSE AGREEMENT. OPENING OR USING THIS PACKAGE CONSTITUTES ACCEPTANCE OF THESE TERMS. IF THE TERMS OF THIS LICENSE ARE NOT ACCEPTABLE, THE CUSTOMER MAY OBTAIN A FULL REFUND OF ANY MONEY PAID IF THIS UNUSED, UNOPENED PACKAGE IS RETURNED WITHIN TEN (10) DAYS TO THE DEALER FROM WHICH IT WAS ACQUIRED.

1. **LICENSE. DSD BUSINESS SYSTEMS, INC.,** a California corporation as Licensor and owner hereby agrees to grant you as Licensee a non-exclusive license to use the enclosed software subject to the terms and restrictions set forth in this License Agreement. Title in and ownership of all programs and program enhancements or modifications written by DSD Business Systems, Inc. shall remain at all times vested in DSD Business Systems, Inc. The right granted by this Customer License Agreement and your payment of the non-refundable License fee is the right to use the Program in accordance with the terms of this Customer License Agreement. Delivery of a copy of the Program to you is made solely to enable you to exercise this right.
2. **COPYRIGHT.** This Program is copyrighted and all rights are reserved by DSD BUSINESS SYSTEMS, INC. and SAGE, INC. You may not copy or reproduce any part of the Program except to copy the Program for backup purposes. If you make a backup copy you must reproduce and include the copyright notice on it. The distribution of the product is intended for the use of the original Licensee only and for use only on the computer systems specified. Lawful users of this Program are hereby licensed only to read the Program from its medium into the memory of a computer only for the purpose of executing the program.

The documentation is also copyrighted and all rights are reserved. This document may not, in whole or in part, be copied, photocopied, reproduced, translated, transmitted or reduced to any electronic medium of machine readable form without prior consent, in writing, from DSD BUSINESS SYSTEMS, INC.

The Licensee recognizes that DSD BUSINESS SYSTEMS, INC. has expended considerable time, effort and money to develop the licensed Software and Manual and that DSD BUSINESS SYSTEMS, INC. will be substantially damaged by its unauthorized use, sale or distribution. In addition to recovery of all damages and the obtaining of injunctive relief as provided by law, in the event legal action must be taken to enforce this provision, the Licensee will pay DSD BUSINESS SYSTEMS, INC. all reasonable legal fees incurred in enforcing the rights of DSD BUSINESS SYSTEMS, INC. under this provision.

3. **RESTRICTIONS ON USE AND TRANSFER.** The original and any backup copies of the Program and its documentation are to be used only in connection with a single computer or network fileserver. You may physically transfer the Program from one computer to another, provided that the Program is used in connection with only one computer or network fileserver at a time. You may not distribute copies of the Program Documentation to others. The Program is to be used exclusively for business purposes and not for personal, family or household use. YOU MAY NOT USE, COPY, MODIFY, OR TRANSFER THE PROGRAM, IN WHOLE OR IN PART, EXCEPT AS EXPRESSLY PROVIDED FOR IN THIS LICENSE AGREEMENT. IN ADDITION YOU MAY NOT MODIFY, ADAPT, TRANSLATE, REVERSE ENGINEER, DECOMPILE, DISASSEMBLE THE PROGRAM, OR CREATE ANY DERIVATIVE WORK BASED UPON THE PROGRAM.
4. **WARRANTY.** DSD BUSINESS SYSTEMS, INC. software is licensed "as is" with no warranties of any kind, either expressed or implied, other than the following: DSD BUSINESS SYSTEMS will repair any bugs or flaws found in the software. Flaws of a critical nature which affect the basic functionality of the software will be repaired on an "emergency" basis, with a corrected distribution diskette sent via UPS Blue or equal. Flaws of a non-critical or cosmetic nature will be repaired on a timely basis, and a corrected distribution diskette sent via UPS ground or regular mail. All incidental or consequential damages that result from any defect in the software, even if DSD Business Systems, Inc. has been advised of the possibility of such damages will be assumed by you.

5. **LIMITED WARRANTY FOR DISKETTES.** To the original licensee only, DSD BUSINESS SYSTEMS, INC. warrants the magnetic diskette on which the Program is recorded to be free from defects in materials and faulty workmanship under normal use and service for a period of ninety days from the date the Program is delivered. Any implied warranties of merchantability and fitness for a particular purpose are limited in duration to the period of ninety (90) days from the date of delivery. If, during this 90 day period, a defect in the diskette should occur, the diskette may be returned DSD BUSINESS SYSTEMS, INC., 5120 Shoreham Place, Suite 280, San Diego, California, 92122, or to any authorized DSD BUSINESS SYSTEMS, INC. Dealer, and the diskette will be replaced without charge to you, provided that you have previously returned the Warranty Registration Card along with a copy of your sales receipt for the Program.
6. **NO OTHER WARRANTIES.** No dealer or distributor of DSD BUSINESS SYSTEMS, INC. products or any agent of DSD BUSINESS SYSTEMS, INC. is authorized to make any representation of warranty with respect to the Program except those expressly stated in the Customer License Agreement.
7. **LIMITATION OF LIABILITY.** Neither DSD BUSINESS SYSTEMS, INC. nor anyone else who has been involved in the creation, production or delivery of this program shall be liable for any direct, incidental or consequential damages.
8. **TERM.** This license is effective until terminated. You may terminate it at any time by returning the Program and Documentation together with all copies, modifications and merged portions in any form to DSD BUSINESS SYSTEMS, INC. The license will also be terminated by DSD BUSINESS SYSTEMS, INC. immediately and without notice if you fail to comply with any term or condition of this License Agreement.
9. **ACKNOWLEDGMENT.** Your opening this package, use of this program or signature on the warranty registration card acknowledges that you have read this customer license agreement and agree to its terms. You further agree that the license agreement is the complete and exclusive statement of the agreement between yourself and DSD BUSINESS SYSTEMS, INC. and supersedes any proposal or prior agreement, oral or written, and any other communications between yourself and DSD BUSINESS SYSTEMS, INC or dealers and distributors of DSD BUSINESS SYSTEMS, INC products relating to the subject matter of this agreement.
10. **ASSIGNMENT.** You may not sublicense this license or the Program. You may not rent this Program or the use of the Program. You may not transfer this copy of the Program unless the recipient agrees in writing (and a copy of such acceptance is sent to DSD BUSINESS SYSTEMS, INC., 5120 Shoreham Place, Suite 280, San Diego, California, 92122) to accept all of the terms of this Customer License Agreement. Any attempt by you to otherwise rent, sublicense, assign or transfer any of the rights, duties or obligation hereunder is void and may be the cause for immediate termination of the license. DSD BUSINESS SYSTEMS, INC. may assign any of its rights and obligation under this agreement to any party without notice to you.

Fax Transmittal Form

To:	<i>DSD Business Systems Customer Service</i>		Fax:	<i>858/550-4900</i>
From:	Name:		Phone:	
	Company:		Fax:	
Date:	/ /	# Pgs Including this Page:		
Subject:	Check One: <input type="checkbox"/> Product Problem <input type="checkbox"/> Suggestions			
Product:	<i>POMC Purchase Order Multi-Currency</i>		Version:	<i>7.20</i>

This page may be copied