



DSD Business Systems

Sage 100 Enhancements

POEL

Purchase Order Landed Cost Entry

Version 6.20



Information in this document is subject to change without notice.

Copyright 1993-2020, DSD Business Systems All rights reserved.

Purchase Order Landed Cost Entry User's Manual
Version 6.20

24 September, 2020

DSD Business Systems
8787 Complex Drive
Suite 400
San Diego, CA 92123
858/550-5900 8:00am to 5:00pm PST
858/550-4900 Fax

Trademarks

ProvideX® is a Trademark of Sage Software.

Windows is a trademark of Microsoft Corporation.

Sage 100® is a registered trademark of Sage Software.

PXPlus® is a registered trademark of PVX Plus technologies

All other product names and brand names are service marks, and/or trademarks or registered trademarks of their respective companies.

This documentation and the software described herein, is prepared and published under license. Sage Software has not tested or verified either the software or any representation in this documentation regarding the software. Sage Software does not make any warranty with respect to either this documentation or the software described herein, and specifically disclaims any warranty, express or implied, with respect hereto, including the warranties of fitness for a particular purpose and merchantability.

Table of Contents

SECTION A: INTRODUCTION	4
WEB RESOURCES.....	4
SUPPORT.....	4
PURCHASE ORDER LANDED COST ENTRY FEATURES	5
SECTION B: GETTING STARTED	6
REQUIRED LEVELS.....	6
INSTALLATION.....	6
DSD ENHANCEMENT CONTROL PANEL.....	8
SECTION C: SYSTEM OPERATIONS	10
<i>PURCHASE ORDER ENTRY</i>	10
<i>RECEIPT OF GOODS ENTRY</i>	10
<i>PERIOD END AND PURGE COMPLETED PURCHASE ORDERS</i>	12
<i>DICTIONARY CHANGES</i>	12
SECTION D: UNINSTALL DSD ENHANCEMENTS	13

Section A: Introduction

This manual contains a description and instructions for this DSD product. Operating instructions are included for the features added by this product to Sage 100. For instructions on using Sage 100, refer to the appropriate Sage 100 manual, or call your Sage 100 reseller. DSD Business Systems offers excellent Sage 100 support, at an hourly rate.

Web Resources

DSD web site: <http://www.dsdinc.com>

The Enhancement page contains:

- Current Release Schedule*
- Purchasing Information*
- Installation Instructions*
- Product Support*
- Enhancement Links*

POEL Purchase Order Landed Cost Entry:

<http://www.dsdinc.com/enh/pages/POEL.htm>

The product web page contains:

- Product Description*
- Web Links*
- Current Product Version Table*
- Product Installation File Download*
- Product Manual in .pdf Format*
- Revision History*
- FAQ*

Support

DSD provides product support through Sage 100 resellers. Support is provided for the current version. Older versions are supported at an hourly rate. DSD's telephone number is **858-550-5900**. Fax: **858-550-4900**.

For a hard error, where the program displays an error dialog, report:

- Error number.*
- Program name.*
- Line number.*
- Program version.*
- Exact sequence that caused the error, including menus and menu selections.*
- Other pertinent information.*

If leaving a message or faxing, please include:

Your name.

Your phone number (and fax if applicable) and extension.

It is possible to be unable to duplicate a problem, because of data corruption or because we have not exactly duplicated a particular operating environment. In such circumstances, we can only continue to try to fix the problem if we can either access the system remotely or by some other to duplicate the system.

Purchase Order Landed Cost Entry Features

This enhancement to the Purchase Order module adds the ability to add Landed Cost records to standard Purchase Order prior to the creation of receipts. When the receipt is created in Receipt of Goods Entry, the landed cost information will be carried over from the originating purchase order.

Section B: Getting Started

CAUTION

- **If you reinstall or upgrade one of the Sage 100 modules listed in the following table, you must also reinstall this Enhancement.**
- Enhancements from different Sage Developers are generally not designed to work together. If installed together, problems are likely to occur.
- **Check with DSD before installing more than one Enhancement.**

Required Levels

Sage 100 Module	Module Required	Required Level
P/O	Y	6.20

Installation

1. **Back-up:** Exit all Sage 100 sessions. Back-up existing Sage 100 data.
2. **Check Levels:** Sage 100 module levels **must match** those listed above.
3. **Run Enhancement Setup Program:** Save the executable installation program (sent to you or downloaded from our website) in a convenient location on the Sage 100 server. Launch the program from Windows Explorer or by selecting Start/Run, and then browse for the file in the location you saved it. Follow on-screen instructions.
4. **Send your Sage Serial Number to your DSD Representative:** Send your Sage Serial Number to your DSD representative in order for us to send you back the encrypted keys to unlock your system. This serial number can be found in Library Master\Setup\System Configuration, Tab 3. Registration as Serial Number.
5. **Re-Start Sage 100:** Sage 100 will be updated.
6. **Unlock the Enhancement:** DSD Enhancements must be unlocked to run. When any part of the Enhancement is run for the first time, the **DSD Enhancement License Agreement and Activation** window will appear. Follow the steps shown on that window. *You can click the Help button for more detailed instructions.*

Note: On the next page is a screenshot of the DSD Enhancement License Agreement and Activation window.

After accepting the License Agreement, you can then select the type of unlocking that you'd prefer. The choices are File, Web, Demo and Manual Entry.

File Unlock: After receiving your encrypted serial number key file from DSD, and placing that file in the MAS90/SOA directory, selecting this option will unlock all products keys contained in the file. This means you can unlock all enhancements at once using this option.

Web Unlock: If the system that is running the DSD Enhancement *has web access* and you *have sent DSD your Sage Serial number*, you can unlock the Enhancement without assistance using Web Unlock. When this option is selected, the program will attempt to download encrypted serial number key file from DSD *and then proceed to unlock all enhancements contained in the file*.

- *The Sage 100 system that is being used must have web access for this option to be effective.*
- *You can send your Sage Serial Number to your DSD Enhancements sales representative.*

Demo Unlock: If a Demo mode is available for the Enhancement you're running, you will be able to Demo unlock the product without assistance from DSD for demo purposes.

- *Creating a Demo Unlock is a good way to temporarily unlock DSD Enhancements off-hours, if you do not have web or email access. Later, you can unlock the product fully, during business hours.*

Manual Entry Unlock: If you want to unlock a single enhancement using a single encrypted key, you can select this option and enter the 64 character key you receive from DSD by copy and paste.

Note: You can also unlock a DSD Enhancement through the [DSD Enhancement Control Panel](#) found on the Library Master Utilities Menu. Then, select the Enhancement with your mouse from the list of Enhancements and click the **Unlock Product** button on the right side of the window.

- Convert Data:** After unlocking, the DSD Conversion Wizard will appear. Follow on-screen instructions to complete data conversion. *You can exit the conversion program without converting data. The Enhancement will not proceed, however, until data is converted. If you enter an enhanced program and data has not been converted, the conversion program will run again.*

DSD Enhancement Control Panel

Starting with version 3.61, all DSD Enhancement products include DSD's Enhancement Control Panel. The **DSD Enhancement Control Panel is accessed from the Library Master Utilities menu.**

The DSD Enhancement Control Panel is a simple to use yet powerful system to help maintain DSD Enhancements installed on a Sage 100 system. To use it, select an Enhancement product from the list on the window and then click the button, on the right side of the window, which corresponds with the desired task.

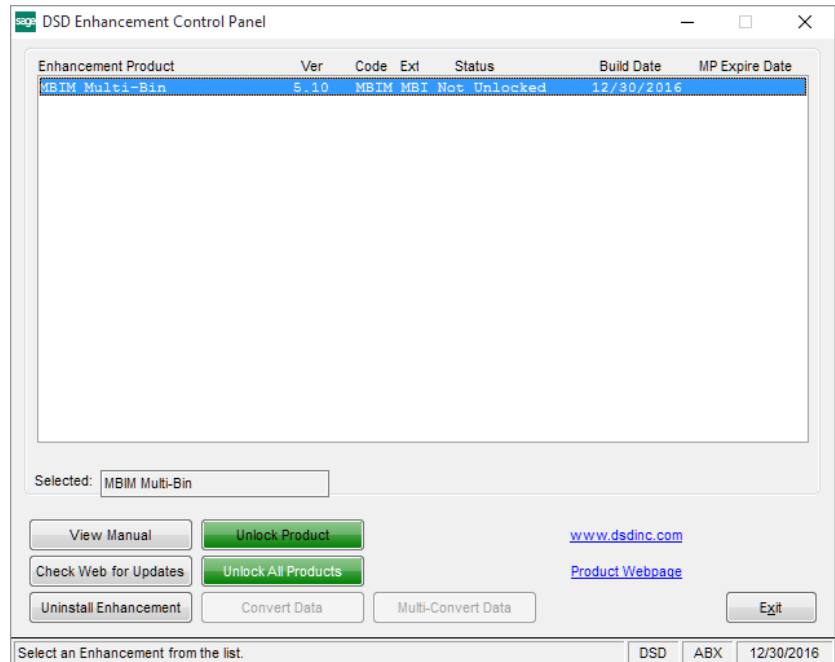
View Manual: This button will display the product manual for the selected Enhancement using Adobe Acrobat. For this to be possible, the PDF file for the corresponding manual must be in the "MAS90/PDF" folder in the Sage 100 system. If the file is not present, and the system has web access, the correct PDF file will be automatically downloaded from the DSD website, put into the "MAS90/PDF" folder and then displayed.

Check the Web for Updates: This button will check the DSD website to see what the current build is the selected Enhancement and alert the user if a later version is available. *This requires an internet connection on the Sage 100 system.*

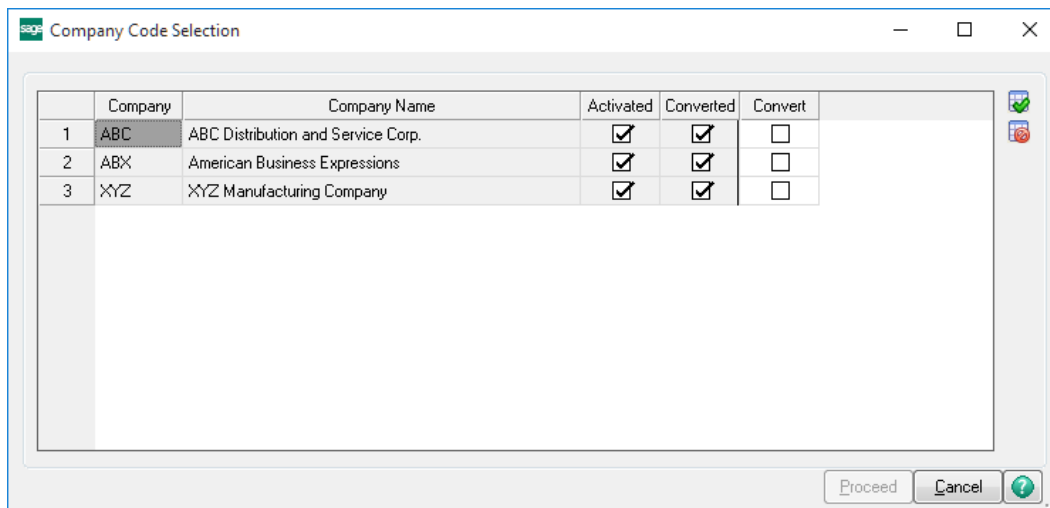
Unlock Product: This will cause the DSD Enhancement License Agreement and Activation window to appear. Using this window is described on the previous page. *This button is disabled if the selected Enhancement is already unlocked or if unlocking is not required.*

Unlock All Products: This will cause the DSD Enhancement All License Agreement and Activation window to appear. This window is similar to the one described on the previous page, but has only web and file as options to unlock. *This button is never disabled.*

Convert Data: After verification, the selected Enhancement's data conversion program will run. Data conversion is non-destructive, and may be triggered any number of times. Sometimes this is required to fix data records imported or updated from a non-enhancement installation.



Multi-Convert Data: Multiple Companies can be converted at the same time for a given Enhancement. (If you have a large number of Companies to convert, please do in batches of 20 or fewer due to memory limitations.)



Help: The Help button, located at the bottom right of the window, opens an HTML help file.

Get Adobe Acrobat: Opens the Adobe Acrobat website to the page where Acrobat can be downloaded and installed.

Uninstall Enhancement If this option is available, then selecting this button will start the un-install process, removing the enhancement from the system. (for more information see [Uninstall DSD Enhancements](#))

Section C: System Operations

Purchase Order Entry

Once installed, users will now have access to the Landed Cost button in Purchase Order Entry. This will function in the same manner as the Landed Cost button in Receipt of Goods. (Note: Allow Entry of Landed Cost must be enabled in PO Options)

The screenshot shows the 'Purchase Order Entry (ABC) 6/20/2018' window. The 'Landed Cost Entry' dialog box is open, displaying a table with the following data:

	Cost Type	Description	Method	Amount
1	DUTY	Duty	Cost	100.00
2	FRGHT	Freight	Cost	300.00
3				.00

Below the table, the 'Total Landed Cost' is displayed as 400.00. The dialog box has 'OK' and 'Cancel' buttons at the bottom right.

Receipt of Goods Entry

When a Receipt of Goods is created that references a Purchase Order Number, any associated Landed Cost records in the PO234_OEL_LandedCostOrder table will be copied to the PO_LandedCostReceipt table.

When the user navigates to the Totals Tab, the Landed Costs will be re-calculated based on percentage received to the PO:

New Landed Cost Amount = (Receipt Taxable Amount + Non-Taxable Amount) \ (Purchase Order Taxable Amount + Non-Taxable Amount) * Purchase Order Landed Cost Amount.

If the Receipt Header Override Landed field is set to “Y”, no landed cost calculations will be performed.

The screenshot shows the Sage 100 Receipt of Goods Entry (ABC) 6/20/2018 form. The form is divided into several sections:

- Header:** Receipt Number: 001017, Receipt Date: 6/20/2018, Override Landed Cost:
- Address:** Purchase Order Number: 0010027, Invoice Number: [empty], Invoice Date: [empty]
- Vendor:** Vendor No.: 01-COMPAQ, Vendor Name: Compaq Computer Corporation
- Order Information:** Order Type: Standard Order, Order Status: New, Required Date: 5/30/2020
- Shipping:** Purchase Address: [empty], Ship-To Address: 0000 ABC Distributing Company, Terms Code: 03 NET END OF MONTH, Ship Via: [empty] FOB [empty], Warehouse: 000 CENTRAL WAREHOUSE
- Sales Tax:** Schedule: CA OR, Orange County: , Use Tax:
- Contact:** Confirm To: JERRY ALLE, E-mail: [empty], Telephone: (714) 555-9921, Ext: [empty], Comment: [empty]

Buttons at the bottom include Accept, Cancel, Delete, and a help icon.

Receipts with no associated Purchase Order Number will not be modified for Landed Cost calculations. The standard Sage 100 logic will apply.

Period End and Purge Completed Purchase Orders

P/O Period End Processing and the Purge Completed Purchase Orders Utility have been modified to now also remove records from the Purchase Order Landed Cost Order table (PO234_OEL_LandedCostOrder). Records will only be removed if the correspond Purchase Order is being removed.

Dictionary Changes

The following changes have been made to the dictionary upon installation of the enhancement.

Table: PO ReceiptHeader

Field Name: OEL_234_Override
Description: Override Landed Cost
Type: String
Length: 1

Field Name: OEL_234_POTaxableAmt
Description: Purchase Order Taxable Amount
Type: Number

Field Name: OEL_234_PONonTaxableAmt
Description: Purchase Order Taxable Amount
Type: Number

Table: PO234 OEL LandedCostOrder

Field Name: PurchaseOrderNo
Description: Purchase Order Number
Type: String
Length: 7

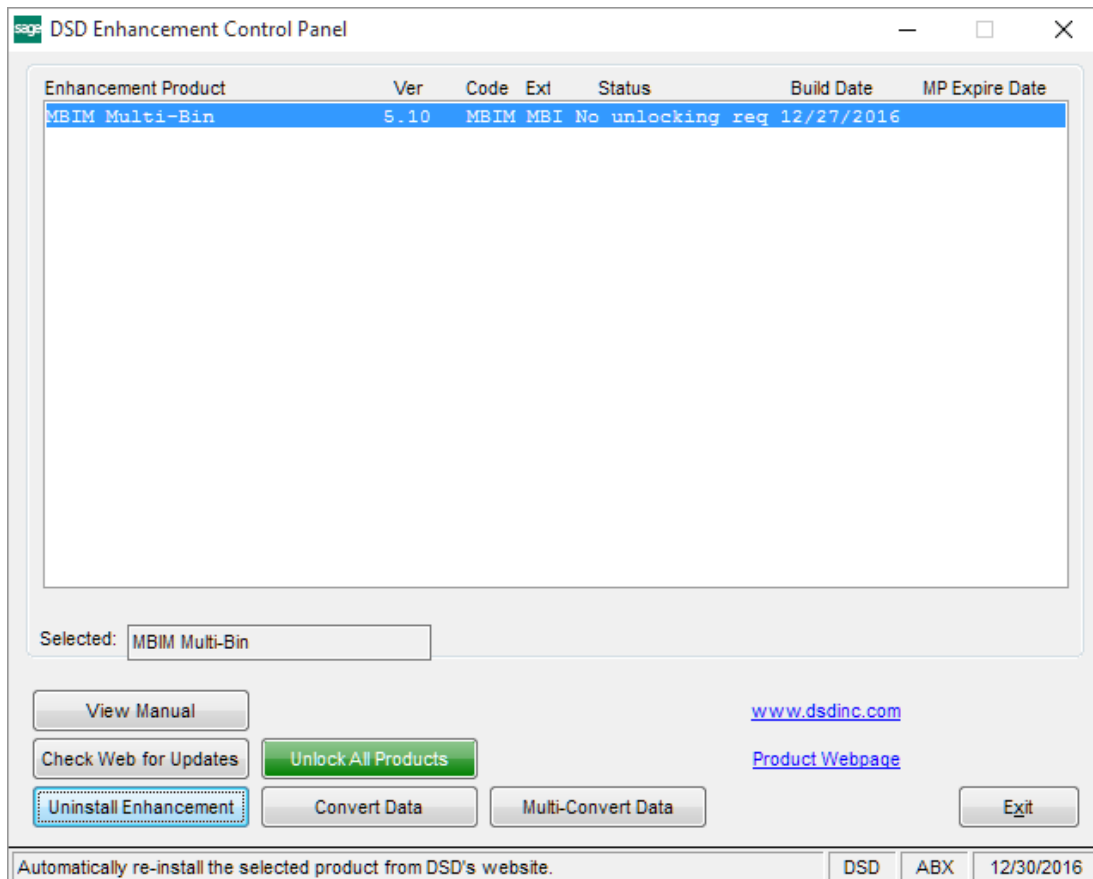
Field Name: LandedCostType
Description: Landed Cost Type
Type: String
Length: 5

Field Name: LandedCostAmt
Description: Landed Cost Amount
Type: Number

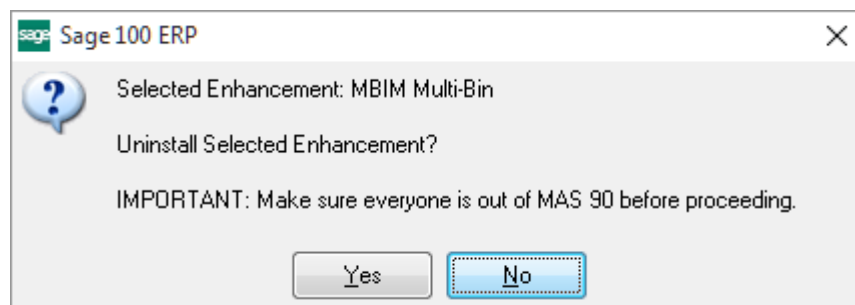
Field Name: LandedCostCalcAmt
Description: Landed Cost Calculation Amount
Type: Number

Section D: Uninstall DSD Enhancements

A DSD Enhancements Uninstall Utility has been provided for the purposes of removing DSD Enhancements from your Sage 100 System. This utility may be accessed from the **DSD Enhancement Control Panel** menu option on the **Library Master / Utilities** menu.

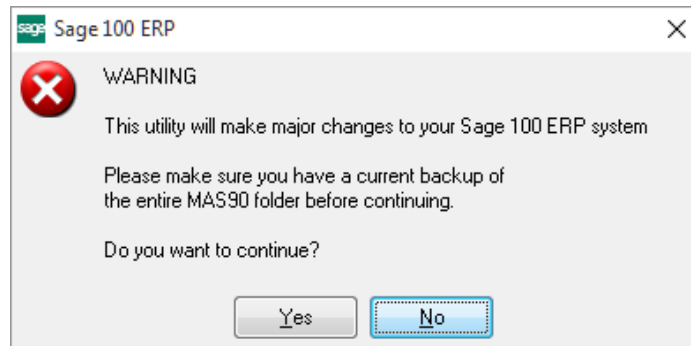


When accessing the **DSD Enhancement Control**, select the enhancement that you wish to Uninstall, and then select the **Uninstall Enhancement** button. The following message box will appear:



Select **No** to exit the Uninstall Process.
 Select **Yes** to continue with the Uninstall Process.

The following message box will appear, to remind you that a complete backup of your entire Sage 100 system should be completed prior to uninstalling a DSD product.



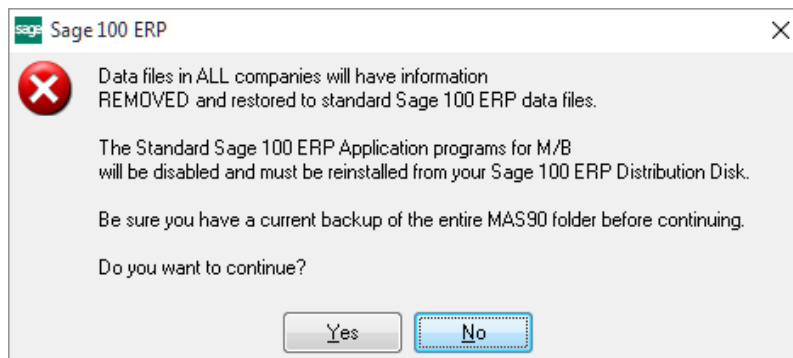
Select **No** to exit the Uninstall Process.
 Select **Yes** to continue with the Uninstall Process.

After the Uninstall of the DSD Enhancement, you MUST reinstall certain standard Sage 100 modules, followed by reinstallation of Product Updates and Hot Fixes, if applicable.

A message box will appear, and will display which of those specific Sage 100 modules you must reinstall afterwards.

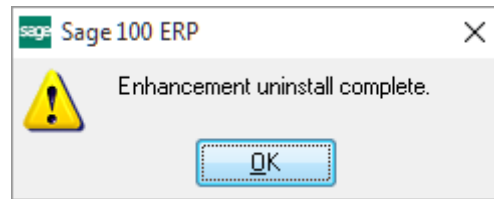
Select **No** to exit the Uninstall Process.
 Select **Yes** to continue with the Uninstall Process.

The following message box will appear, displaying the final warning message.



Select **No** to exit the Uninstall Process.
 Select **Yes** to continue with the Uninstall Process. At this point, the DSD Enhancement will be removed from the Sage 100 system.

After completion of the Uninstall, the following message box will appear. Select OK to continue.



Now that the Uninstall process is completed, you must:

- Reinstall the applicable standard Sage 100 modules
- Reinstall the latest Sage 100 Service Pack/Updates, if applicable.
- Reinstall any other DSD Enhancements or Developer products that are affected from the reinstallation of the standard Sage 100 module(s).