



# **DSD Business Systems**

**Sage 100 Enhancements**

## **MRSC Electronic Reporting South Carolina Quarterly Unemployment and W-2 Reporting**

**Version 5.40**



Information in this document is subject to change without notice.

Copyright 1993-2015, DSD Business Systems All rights reserved.

South Carolina Quarterly Unemployment & W-2 Reporting User's Manual  
Version 5.40

23 March, 2020

DSD Business Systems  
5120 Shoreham Place  
Suite 280  
San Diego, CA 92122  
858/550-5900 8:00am to 5:00pm PST  
858/550-4900 Fax

### Trademarks

**ProvideX®** is a Trademark of Sage Software.

**Windows** is a trademark of Microsoft Corporation.

**Sage 100®** is a registered trademark of Sage Software.

**PXPlus®** is a registered trademark of PVX Plus technologies

All other product names and brand names are service marks, and/or trademarks or registered trademarks of their respective companies.

This documentation and the software described herein, is prepared and published under license. Sage Software has not tested or verified either the software or any representation in this documentation regarding the software. Sage Software does not make any warranty with respect to either this documentation or the software described herein, and specifically disclaims any warranty, express or implied, with respect hereto, including the warranties of fitness for a particular purpose and merchantability.



---

## Table of Contents

---

<b>SECTION A: INTRODUCTION</b>	<b>5</b>
WEB RESOURCES.....	5
HOW TO USE THIS DOCUMENTATION.....	6
SUPPORT .....	6
SOUTH CAROLINA QUARTERLY UNEMPLOYMENT & W-2 REPORTING FEATURES.....	7
<b>SECTION B: GETTING STARTED</b>	<b>8</b>
REQUIRED LEVELS.....	8
INSTALLATION.....	8
DSD ENHANCEMENT CONTROL PANEL.....	10
<b>SECTION C: OPERATIONS</b>	<b>12</b>
Before Proceeding .....	12
USING M/R SC QUARTERLY UNEMPLOYMENT REPORTING PROGRAM .....	12
Processing.....	13
SUMMARY REPORT.....	13
USING SC W-2 ELECTRONIC REPORTING PROGRAM.....	14
FAQ.....	15
Format Being Used For Quarterly Unemployment Reporting.....	15
Format Being Used For W-2 .....	15
Why Unemployment Wages Might be Reported Incorrectly.....	15
The Summary Totals are Different From Another Report .....	15
Making Archival Backups of Payroll Data .....	15
<b>SECTION D: UNINSTALL DSD ENHANCEMENTS</b>	<b>16</b>
<b>LICENSE AGREEMENT</b>	<b>19</b>
<b>FAX TRANSMITTAL FORM</b>	<b>21</b>

## Section A: Introduction

---

This manual contains a description and instructions for this DSD product. Operating instructions are included for the features added by this product to Sage 100. For instructions on using Sage 100, refer to the appropriate Sage 100 manual, or call your Sage 100 reseller. DSD Business Systems offers excellent Sage 100 support, at an hourly rate.

### Web Resources

M/R South Carolina Quarterly Unemployment & W-2 Reporting web sites:

UI:

<http://www.sces.org/ui/employer/tax/Reporting/index.htm>

<http://www.sces.org/ui/employer/tax/Reporting/diskette.htm>

[http://www.sces.org/ui/employer/tax/Forms/MMREF\\_disk.doc](http://www.sces.org/ui/employer/tax/Forms/MMREF_disk.doc)

<http://www.sces.org/ui/business-online.htm>

W2s:

<https://www.scbos.sc.gov/LinkClick.aspx?fileticket=Lh-QhUBUuMg%3d&tabid=297>

DSD web site: <http://www.dsdinc.com>

The Enhancement page contains:

*Current Release Schedule*

*Purchasing Information*

*Installation Instructions*

*Product Support*

*Enhancement Links*

MRSC South Carolina Quarterly Unemployment & W-2 Reporting:

<http://www.dsdinc.com/enh/by-module/magnetic-media-electronic-reporting/mrsc.html>

The product web page contains:

*Product Description*

*Web Links*

*Current Product Version Table*

*Product Installation File Download*

*Product Manual in .pdf Format*

*Revision History*

*FAQ*

## How to Use This Documentation

The DSD Business Systems M/R **South Carolina Quarterly Unemployment & W-2 Reporting (MRSC)** enhancement has been designed to work in conjunction with the Sage 100 **Electronic Reporting** module. Before this software can be used, the **Electronic Reporting** module must be installed. Refer to the **Electronic Reporting** module for that module's installation instructions.

**IMPORTANT:** *Different Master Developers' enhancements have not been designed to work with each other. If you install two different enhancements on the same Sage 100 system, there is a good chance that programming and data file conflicts could lead to serious data integrity problems. Please check with DSD Business Systems if you are contemplating the installation of more than one enhancement on your system.*

The conventions used in this documentation are identical to those used in the Sage 100 application modules. This documentation contains only a description of the **MRSC** modifications. **If you are having difficulty using the Sage program, please refer to that application's manual, or to Sage Product Support.** DSD Business Systems can support or answer questions related to the use of the standard Sage 100 modules, but only at the DSD Business Systems normal hourly consulting rate.

If you are having difficulties, which you feel are the result of a problem or bug in this software, please contact DSD Business Systems at **858-550-5900**. Our fax number is **858-550-4900**.

## Support

DSD provides product support through Sage 100 resellers. Support is provided for the current version. Older versions are supported at an hourly rate. DSD's telephone number is **858-550-5900**. Fax: **858-550-4900**.

For a hard error, where the program displays an error dialog, report:

*Error number.*

*Program name.*

*Line number.*

*Program version.*

*Exact sequence that caused the error, including menus and menu selections.*

*Other pertinent information.*

If leaving a message or faxing, please include:

*Your name.*

*Your phone number (and fax if applicable) and extension.*

It is possible to be unable to duplicate a problem, because of data corruption or because we have not exactly duplicated a particular operating environment. In such circumstances, we can only continue to try to fix the problem if we can either access the system with Symantec PCAnywhere or by some other means access or duplicate the system.

### ***South Carolina Quarterly Unemployment & W-2 Reporting Features***

The M/R **South Carolina Quarterly Unemployment & W-2 Reporting** modifications for Sage 100 Electronic Reporting allows the user to:

1. Generate Electronic Reporting compliant with the Electronic Reporting Information as required by the State of South Carolina. This report includes the following data:
  - ◆ Employee Name
  - ◆ Social Security Number
  - ◆ Employer Account Number
2. Generate an Electronic Reporting summary report, after the creation of the Electronic Reporting file, that reports the information needed to complete the Electronic Reporting Transmittal form that must be submitted with the Electronic Reporting file.
3. Generate a W-2 report as required by the State of South Carolina.

## Section B: Getting Started



- If you reinstall or upgrade one of the Sage 100 modules listed in the following table, you must also reinstall this Enhancement.

- Enhancements from different Sage Developers are generally not designed to work together. If installed together, problems are likely to occur.
- Check with DSD before installing more than one Enhancement.

### Required Levels

Sage 100 Module	Module Required	Required Level
P/R	Y	5.40

### Installation

1. **Back-up:** Exit all Sage 100 sessions. Back-up existing Sage 100 data.
2. **Check Levels:** Sage 100 module levels **must match** those listed above.
3. **Run Enhancement Setup Program:** Save the executable installation program (sent to you or downloaded from our website) in a convenient location on the Sage 100 server. Launch the program from Windows Explorer or by selecting Start/Run, and then browse for the file in the location you saved it. Follow on-screen instructions.
4. **Send your Sage Serial Number to your DSD Representative:** Send your Sage Serial Number to your DSD representative in order for us to send you back the encrypted keys to unlock your system. This serial number can be found in Library Master\Setup\System Configuration, Tab 3. Registration as Serial Number.
5. **Re-Start Sage 100:** Sage 100 will be updated.
6. **Unlock the Enhancement:** DSD Enhancements must be unlocked to run. When any part of the Enhancement is run for the first time, the **DSD Enhancement License Agreement and Activation** window will appear. Follow the steps shown on that window. *You can click the Help button for more detailed instructions.*

**Note:** On the next page is a screenshot of the DSD Enhancement License Agreement and Activation window.

After accepting the License Agreement, you can then select the type of unlocking that you'd prefer. The choices are File, Web, Demo and Manual Entry.

**File Unlock:** After receiving your encrypted serial number key file from DSD, and placing that file in the MAS90/SOA directory, selecting this option will unlock all products keys contained in the file. This means you can unlock all enhancements at once using this option.

**Web Unlock:** If the system that is running the DSD Enhancement *has web access* and you *have sent DSD your Sage Serial number*, you can unlock the Enhancement without assistance using Web Unlock. When this option is selected, the program will attempt to download encrypted serial number key file from DSD *and then proceed to unlock all enhancements contained in the file.*



- The Sage 100 system that is being used must have web access for this option to be effective.
- You can send your Sage Serial Number to your DSD Enhancements sales representative.

**Demo Unlock:** If a Demo mode is available for the Enhancement you're running, you will be able to Demo unlock the product without assistance from DSD for demo purposes.

- *Creating a Demo Unlock is a good way to temporarily unlock DSD Enhancements off-hours, if you do not have web or email access. Later, you can unlock the product fully, during business hours.*

**DSD Enhancement License Agreement and Activation**

**License Agreement**

YOU MUST READ THIS AGREEMENT COMPLETELY AND AGREE BEFORE PROCEEDING. SCROLL THROUGH THIS AGREEMENT USING THE SLIDER CONTROL.

IMPORTANT: THIS SOFTWARE IS LICENSED BY DSD BUSINESS SYSTEMS, INC. TO CUSTOMERS FOR THEIR USE ONLY IN ACCORDANCE WITH THE TERMS SET FORTH IN THIS CUSTOMER LICENSE AGREEMENT. OPENING OR USING THIS PACKAGE CONSTITUTES ACCEPTANCE OF THESE TERMS. IF THE TERMS OF THIS LICENSE ARE NOT ACCEPTABLE, THE CUSTOMER MAY OBTAIN A FULL REFUND OF ANY MONEY PAID IF THIS UNUSED, UNOPENED PACKAGE IS RETURNED WITHIN TEN (10) DAYS TO THE DEALER FROM WHICH IT WAS ACQUIRED.

**1 Agree to License Agreement**

☒ Agree ☐ Disagree

**2 Select Unlocking Type**

☐ Web ☐ File ☐ Demo ☒ Manual Entry

**3 Call DSD at 858-550-5900**

Have this information ready: End User Name: DSD Business Systems  
Serial Number: 0555188

**4 Enter the following from DSD**

Activation Key:

Click to Unlock:

ABC 4/28/2010

**Manual Entry Unlock:** If you want to unlock a single enhancement using a single encrypted key, you can select this option and enter the 64 character key you receive from DSD by copy and paste.

**Note:** You can also unlock a DSD Enhancement through the **DSD Enhancement Control Panel** found on the Library Master Utilities Menu. Then, select the Enhancement with your mouse from the list of Enhancements and click the **Unlock Product** button on the right side of the window.

7. **Convert Data:** After registration, the Data Conversion window will appear. Follow on-screen instructions to complete data conversion. You can exit the conversion program without converting data. The Enhancement will not proceed, however, until data is converted. If you enter an enhanced program and data has not been converted, the conversion program will run again.

## DSD Enhancement Control Panel

Starting with version 3.61, all DSD Enhancement products include DSD's Enhancement Control Panel. The **DSD Enhancement Control Panel** is accessed from the Library Master Utilities menu.

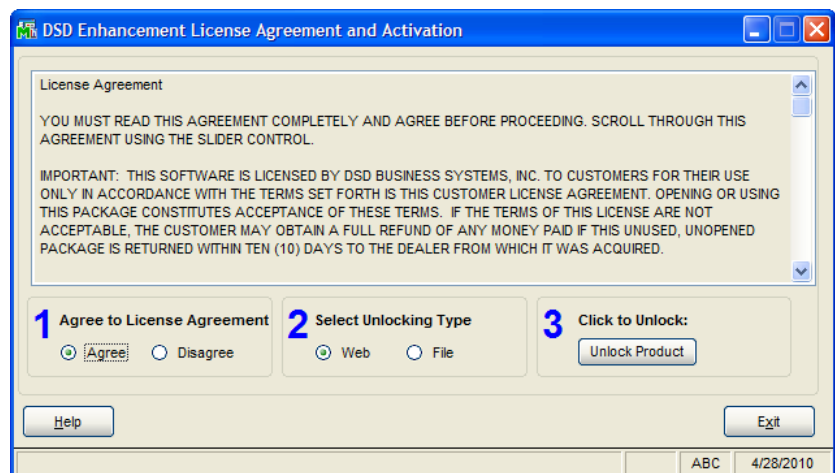
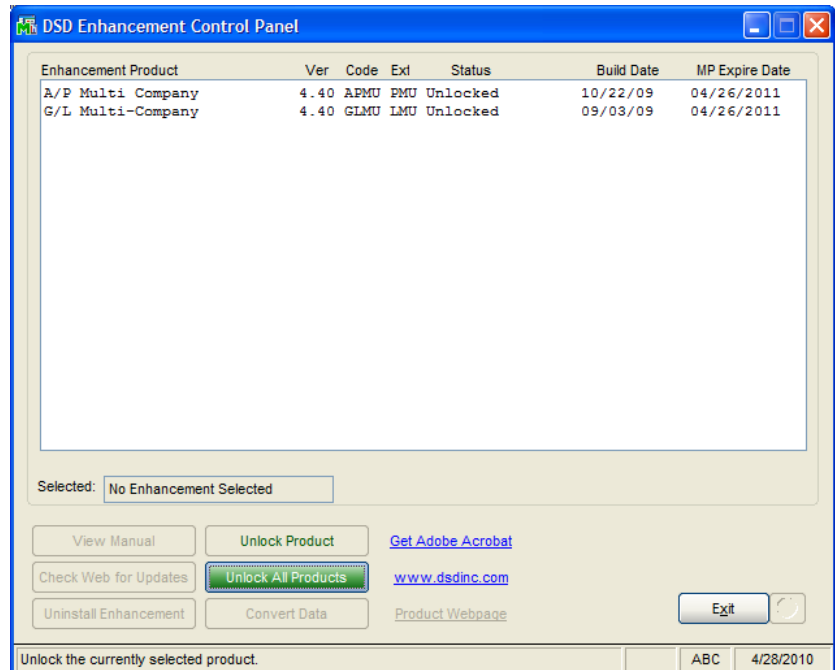
The DSD Enhancement Control Panel is a simple to use yet powerful system to help maintain DSD Enhancements installed on a Sage 100 system. To use it, select an Enhancement product from the list on the window and then click the button, on the right side of the window, which corresponds with the desired task.

**View Manual:** This button will display the product manual for the selected Enhancement using Adobe Acrobat. For this to be possible, the PDF file for the corresponding manual must be in the "MAS90/PDF" folder in the Sage 100 system. If the file is not present, and the system has web access, the correct PDF file will be automatically downloaded from the DSD website, put into the "MAS90/PDF" folder and then displayed.

**Check the Web for Updates:** This button will check the DSD website to see what the current build is the selected Enhancement and alert the user if a later version is available. *This requires an ftp web connection on the Sage 100 system.*

**Unlock Product:** This will cause the DSD Enhancement License Agreement and Activation window to appear. Using this window is described on the previous page. *This button is disabled if the selected Enhancement is already unlocked.*

**Unlock All Products:** This will cause the DSD Enhancement All License Agreement and Activation window to appear. This window is similar to the one described on the previous page, but has only web and file as options to unlock. *This button is never disabled.*



**Convert Data:** After verification, the selected Enhancements data conversion program will run. Data conversion is non-destructive, and may be triggered any number of times. Sometimes this is required to fix data records imported or updated from a non-enhancement installation.

**Help:** The Help button, located at the bottom right of the window, opens an HTML help file .

**Get Adobe Acrobat:** Opens the Adobe Acrobat website to the page where Acrobat can be downloaded and installed.

**Uninstall Enhancement** If this option is available, then selecting this button will start the un-install process, removing the enhancement from the system.

There are also links to the DSD website and the Enhancement page on that site.

## Section C: Operations

### Before Proceeding

This program must be used before Payroll Period End Processing is performed at the end of a quarter. It is highly recommended that you make a complete back-up of all your Payroll data before closing the quarter. This is necessary because it is possible that you may have to re-submit an Electronic Reporting filing for any number of reasons. You would have to restore a quarter's data before recreating an Electronic Reporting filing diskette.

*The Payroll data directory is normally called "PR" plus the three-letter company code and is located below the MAS90 directory. For instance, the ABC company Payroll data directory would be called "MAS90/MAS\_ABC/PRABC".*

The **South Carolina Quarterly Electronic Reporting** enhancement can be accessed from the Payroll **Electronic Reporting** menu.

### Using M/R SC Quarterly Unemployment Reporting Program

**STARTING EMPLOYEE NUMBER:** Enter the Starting Employee Number for reporting selection. An <F2> list mode is available for this field.

**ENDING EMPLOYEE NUMBER:** Enter the Ending Employee Number for reporting selection. An <F2> list mode is available for this field.

**NAME & ADDRESS INFORMATION:** Enter the name and address information for the **company** that is reporting. These fields will default to the information found in Company Maintenance.

**PAYMENT YEAR:** Enter the year for which you are reporting.

**PAYMENT QTR:** Enter the quarter for which you are reporting. This field will default to the current Payroll quarter.

**NOTE:** *The Payment Quarter should always be set to the current Payroll quarter.*

MAS 90 For Windows

Help

(ABC) TENNESSEE MAGNETIC MEDIA PROCESSING SORTED BY EMPLOYEE NO. 11/04/98

STARTING EMPLOYEE NUM:  
ENDING EMPLOYEE NUM: ALL EMPLOYEES

NAME: TEST CO NAME  
ADDRESS: 1234 TEST STREET  
CITY: TEST CITY  
STATE: LA ZIP: 99999

PAYMENT YEAR: 1998  
PAYMENT QTR: 2  
EMPLOYER ID #: 999999999

DISK DRIVE TO USE: A  
DISK FORMAT TO USE: 1

TN ACCOUNT NUMBER: 222222

IS THE ABOVE CORRECT? (Yes, No, Sort, END): (Yes )

**EMPLOYER ID #:** Enter the Federal Employer Identification code. Enter numbers only, do not use dashes.

**SC ACCOUNT NUMBER:** Enter the South Carolina Account Number assigned. Enter numbers only and do not use dashes.

### Processing

After the data has been correctly entered, the program will create the Electronic Reporting file in the payroll data directory. The program will then prompt whether to copy the data file to the diskette drive and whether to print the **Summary Report**.

**Notes:** The output file **"W2REPORT"** is created in the Payroll data directory. If, for any reason, the Electronic Reporting program cannot copy the wage data file to the diskette, you can simply copy the file manually from this directory to the diskette.

The Payroll data directory is normally called "PR" plus the three-letter company code and is located below the MAS90 directory. For instance, the ABC company Payroll data directory would be called "MAS90/MAS\_ABC/PRABC".

*On Unix systems, the program cannot copy the wage data file. Copy it manually.*

*On NT CS systems, the file is copied to the diskette drive on the server.*

### Summary Report

Once the **"W2REPORT"** (file required by SC ESC) Electronic Reporting file has been transferred to the floppy drive, you will be prompted to print the **Summary Report**. This report displays information summarizing the records on the Electronic Reporting file. This summary information will be used to fill out the Electronic Reporting **Transmittal Sheet** that is required to be submitted to the State along with the Electronic Reporting file. The following is a sample **Summary Report**:

RUN DATE: 12/31/99	American Business Futures	PAGE: 1
SYS DATE: 12/31/99	MAGNETIC MEDIA SUMMARY REPORT	TIME: 12:00 PM
YEAR: 1996		
QUARTER: 3		
TOTAL QUARTERLY WAGES REPORTED ON MEDIA FILE:		1,217.20
TOTAL PERSONAL INCOME TAX WITHHELD ON MEDIA FILE:		66.64
TOTAL NUMBER OF EMPLOYEES REPORTED ON MEDIA FILE:		2

Example Summary Report

### Using SC W-2 Electronic Reporting Program

This program works just like the standard Sage 100 Electronic Reporting Federal program, except it produces media suitable for South Carolina.

*The Electronic Reporting output file name is "W2REPORT", the same name used by the Quarterly Report. Be sure to copy the Quarterly Report for quarter 4 to another location, if needed, before the W2's are generated. Otherwise, it will be overwritten by this output file for the W2's.*

Please see the field descriptions from the Standard Sage 100 W-2 Electronic Reporting Information Center for the South Carolina screens shown below.

**Employer Information**

Name: ABC DISTRIBUTION AND SERVICE CORP.  
 Address: 101 MAIN  
 City: SAN DIEGO  
 State: CA  
 ZIP Code: 91901-1225

**Transmitter Information**

Name: CHARLIE  
 Address: 202 MAIN STREET EAST  
 City: San Diego  
 State: CA  
 ZIP Code: 91901  
 Contact: CHARLIE  
 Contact Phone: 5555551312 Ext. 1234

Payment Year: 2015  
 Employer FEIN: 999999999  
 SC Withholding File No.: 888888888

Selection: All Starting Ending

Employee Number: ☒ 00-

Proceed Cancel

Enter the ZIP Code DSD ABC 1/16/2015

### FAQ

#### ***Format Being Used For Quarterly Unemployment Reporting***

The file is generated in the state MMREF-1 Wage Record format.

The name of the file produced for the quarterly unemployment wage report is "W2REPORT". This file is located in the company's **Payroll data folder**.

#### ***Format Being Used For W-2***

The file is generated in the South Carolina CSV Wage Record format.

The name of the file produced for the W-2 report is "W2REPORT.CSV". This file is located in the company's **Payroll data folder**.

#### ***Why Unemployment Wages Might be Reported Incorrectly***

The most common reason Unemployment Wages for a particular employee are reported incorrectly is that a deduction was not made because an Earnings Code was not set up correctly so a deduction would be made in Unemployment Wages.

The program reports exactly what is contained in **QTD Wages Subject To Unemployment** field the **Employee's P/R Employee Tax Summary File** record (for technical readers, this is the PR3[9] numeric).

To correct Unemployment Wages before reporting, use the **Fix** button in **Employee Maintenance** (click the **Tax Summary** button and then the **Fix** button). Supervisor rights are required to access the Fix button.

#### ***The Summary Totals are Different From Another Report***

Note that the specification for the Electronic Reporting file differs from the specification for a printed report. For example, employees with negative numbers for wages or zero wages cannot be reported in the Electronic Reporting file according to the specification.

The Quarterly Tax Summary Report may not match the Summary Report due to either the Limit not being applied, deduction codes for Cafeteria plan, or non-taxable wages not being set up properly.

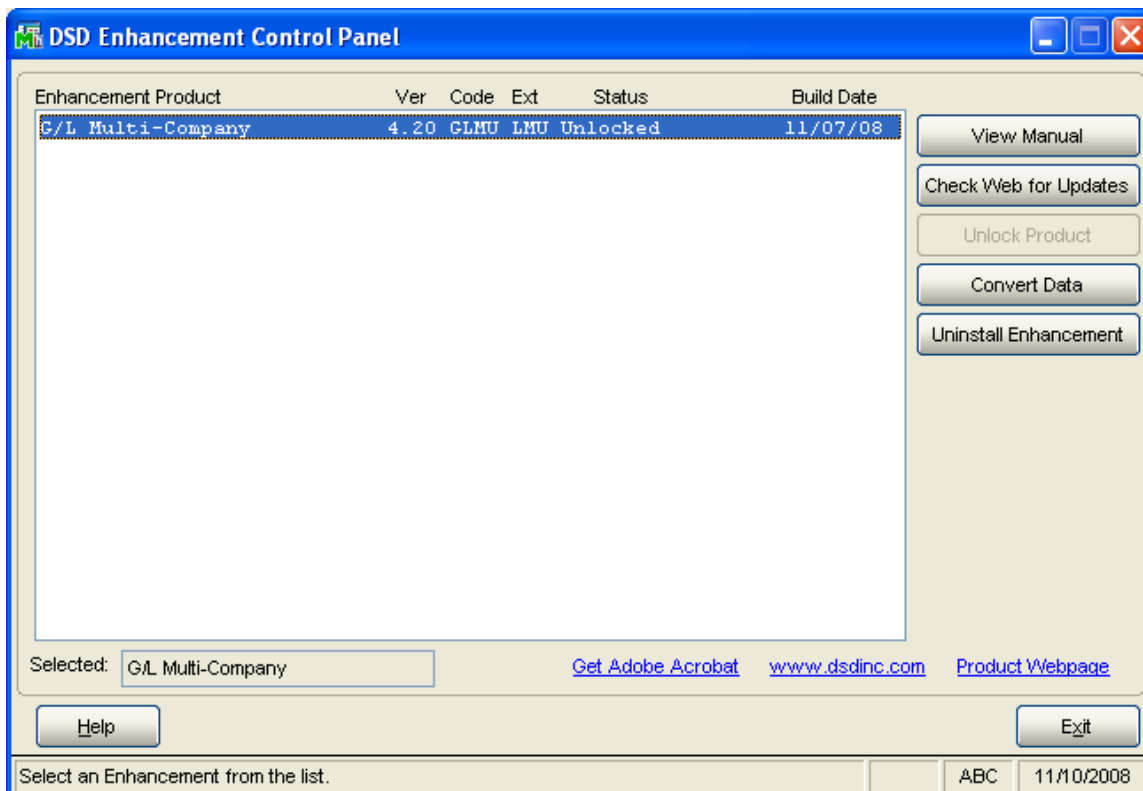
#### ***Making Archival Backups of Payroll Data***

Sage 100 does not retain summary data from previous quarters. It is good practice to make a permanent copy of a quarter's Payroll data before running Period End Processing. When Period End Processing is run, the total buckets are cleared.

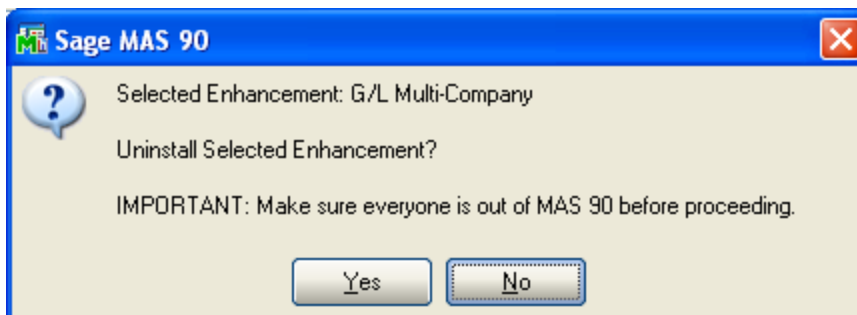
To report from a previous quarter, make a copy of the current Payroll data, restore the Payroll data from the desired quarter, make a report and then restore the current quarter Payroll data.

## Section D: Uninstall DSD Enhancements

A DSD Enhancements Uninstall Utility has been provided for the purposes of removing DSD Enhancements from your Sage 100 System. This utility may be accessed from the **DSD Enhancement Control Panel** menu option on the **Library Master / Utilities** menu.



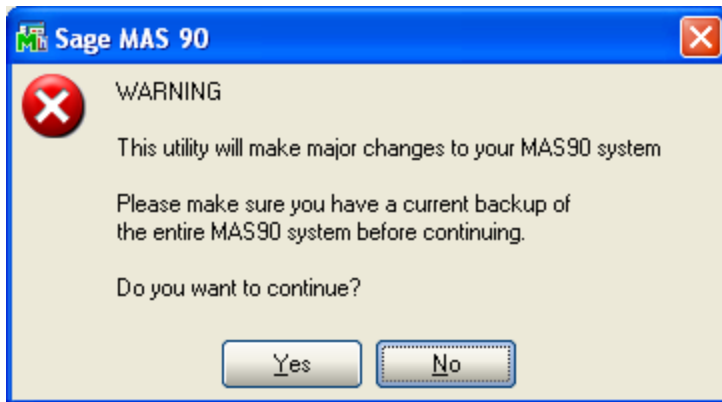
When accessing the **DSD Utility Suite**, select the enhancement that you wish to Uninstall, and then select the **Uninstall Enhancement** button. The following message box will appear:



Select **No** to exit the Uninstall Process.  
Select **Yes** to continue with the Uninstall Process.



The following message box will appear, to remind you that a complete backup of your entire Sage 100 system should be completed prior to uninstalling a DSD product.

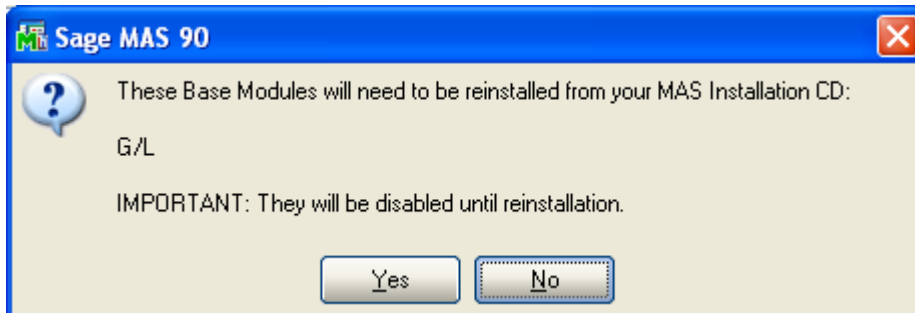


Select **No** to exit the Uninstall Process.

Select **Yes** to continue with the Uninstall Process.

**After the Uninstall of the DSD Enhancement, you MUST reinstall certain standard Sage 100 modules, followed by reinstallation of Sage 100 Service Packs / Updates, if applicable.**

The following message box will appear, and will display which of those specific Sage 100 modules you must reinstall afterwards.



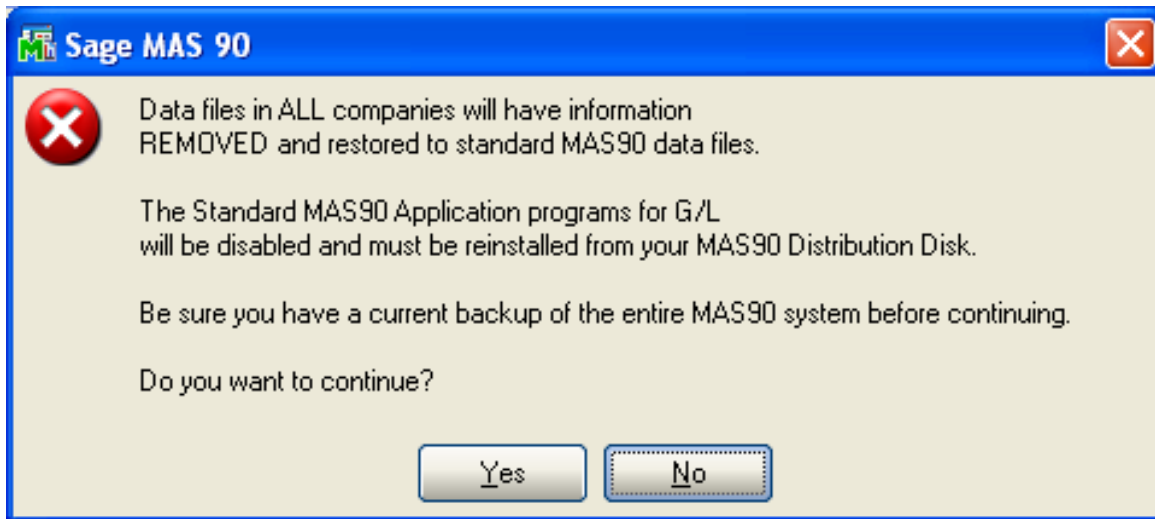
Select **No** to exit the Uninstall Process.

Select **Yes** to continue with the Uninstall Process.

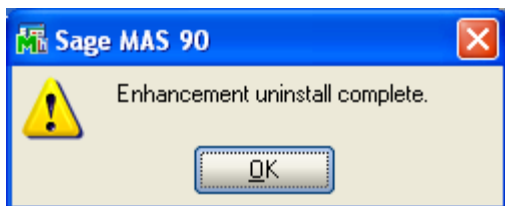
The following message box will appear, displaying the final warning message.

Select **No** to exit the Uninstall Process.

Select **Yes** to continue with the Uninstall Process. At this point, the DSD Enhancement will be removed from the Sage 100 system.



After completion of the Uninstall, the following message box will appear. Select OK to continue.



Now that the Uninstall process is completed, you must:

- Reinstall the applicable standard Sage 100 modules
- Reinstall the latest Sage 100 Service Pack/Updates, if applicable.
- Reinstall any other DSD Enhancements or Developer products that are affected from the reinstallation of the standard Sage 100 module(s).

## License Agreement

---

**IMPORTANT:** THIS SOFTWARE IS LICENSED BY DSD BUSINESS SYSTEMS, INC. TO CUSTOMERS FOR THEIR USE ONLY IN ACCORDANCE WITH THE TERMS SET FORTH IN THIS CUSTOMER LICENSE AGREEMENT. OPENING OR USING THIS PACKAGE CONSTITUTES ACCEPTANCE OF THESE TERMS. IF THE TERMS OF THIS LICENSE ARE NOT ACCEPTABLE, THE CUSTOMER MAY OBTAIN A FULL REFUND OF ANY MONEY PAID IF THIS UNUSED, UNOPENED PACKAGE IS RETURNED WITHIN TEN (10) DAYS TO THE DEALER FROM WHICH IT WAS ACQUIRED.

1. **LICENSE. DSD BUSINESS SYSTEMS, INC.,** a California corporation as Licensor and owner hereby agrees to grant you as Licensee a non-exclusive license to use the enclosed software subject to the terms and restrictions set forth in this License Agreement. Title in and ownership of all programs and program enhancements or modifications written by DSD Business Systems, Inc. shall remain at all times vested in DSD Business Systems, Inc. The right granted by this Customer License Agreement and your payment of the non-refundable License fee is the right to use the Program in accordance with the terms of this Customer License Agreement. Delivery of a copy of the Program to you is made solely to enable you to exercise this right.
2. **COPYRIGHT.** This Program is copyrighted and all rights are reserved by DSD BUSINESS SYSTEMS, INC. and SAGE, INC. You may not copy or reproduce any part of the Program except to copy the Program for backup purposes. If you make a backup copy you must reproduce and include the copyright notice on it. The distribution of the product is intended for the use of the original Licensee only and for use only on the computer systems specified. Lawful users of this Program are hereby licensed only to read the Program from its medium into the memory of a computer only for the purpose of executing the program.

The documentation is also copyrighted and all rights are reserved. This document may not, in whole or in part, be copied, photocopied, reproduced, translated, transmitted or reduced to any electronic medium of machine readable form without prior consent, in writing, from DSD BUSINESS SYSTEMS, INC.

The Licensee recognizes that DSD BUSINESS SYSTEMS, INC. has expended considerable time, effort and money to develop the licensed Software and Manual and that DSD BUSINESS SYSTEMS, INC. will be substantially damaged by its unauthorized use, sale or distribution. In addition to recovery of all damages and the obtaining of injunctive relief as provided by law, in the event legal action must be taken to enforce this provision, the Licensee will pay DSD BUSINESS SYSTEMS, INC. all reasonable legal fees incurred in enforcing the rights of DSD BUSINESS SYSTEMS, INC. under this provision.

3. **RESTRICTIONS ON USE AND TRANSFER.** The original and any backup copies of the Program and its documentation are to be used only in connection with a single computer or network fileserver. You may physically transfer the Program from one computer to another, provided that the Program is used in connection with only one computer or network fileserver at a time. You may not distribute copies of the Program Documentation to others. The Program is to be used exclusively for business purposes and not for personal, family or household use. YOU MAY NOT USE, COPY, MODIFY, OR TRANSFER THE PROGRAM, IN WHOLE OR IN PART, EXCEPT AS EXPRESSLY PROVIDED FOR IN THIS LICENSE AGREEMENT. IN ADDITION YOU MAY NOT MODIFY, ADAPT, TRANSLATE, REVERSE ENGINEER, DECOMPILE, DISASSEMBLE THE PROGRAM, OR CREATE ANY DERIVATIVE WORK BASED UPON THE PROGRAM.

4. **WARRANTY.** DSD BUSINESS SYSTEMS, INC. software is licensed "as is" with no warranties of any kind, either expressed or implied, other than the following: DSD BUSINESS SYSTEMS will repair any bugs or flaws found in the software. Flaws of a critical nature which affect the basic functionality of the software will be repaired on an "emergency" basis, with a corrected distribution diskette sent via UPS Blue or equal. Flaws of a non-critical or cosmetic nature will be repaired on a timely basis, and a corrected distribution diskette sent via UPS ground or regular mail. All incidental or consequential damages that result from any defect in the software, even if DSD Business Systems, Inc. has been advised of the possibility of such damages will be assumed by you.
5. **LIMITED WARRANTY FOR DISKETTES.** To the original licensee only, DSD BUSINESS SYSTEMS, INC. warrants the magnetic diskette on which the Program is recorded to be free from defects in materials and faulty workmanship under normal use and service for a period of ninety days from the date the Program is delivered. Any implied warranties of merchantability and fitness for a particular purpose are limited in duration to the period of ninety (90) days from the date of delivery. If, during this 90 day period, a defect in the diskette should occur, the diskette may be returned DSD BUSINESS SYSTEMS, INC., 5120 Shoreham Place, Suite 280, San Diego, California, 92122, or to any authorized DSD BUSINESS SYSTEMS, INC. Dealer, and the diskette will be replaced without charge to you, provided that you have previously returned the Warranty Registration Card along with a copy of your sales receipt for the Program.
6. **NO OTHER WARRANTIES.** No dealer or distributor of DSD BUSINESS SYSTEMS, INC. products or any agent of DSD BUSINESS SYSTEMS, INC. is authorized to make any representation of warranty with respect to the Program except those expressly stated in the Customer License Agreement.
7. **LIMITATION OF LIABILITY.** Neither DSD BUSINESS SYSTEMS, INC. nor anyone else who has been involved in the creation, production or delivery of this program shall be liable for any direct, incidental or consequential damages.
8. **TERM.** This license is effective until terminated. You may terminate it at any time by returning the Program and Documentation together with all copies, modifications and merged portions in any form to DSD BUSINESS SYSTEMS, INC. The license will also be terminated by DSD BUSINESS SYSTEMS, INC. immediately and without notice if you fail to comply with any term or condition of this License Agreement.
9. **ACKNOWLEDGMENT.** Your opening this package, use of this program or signature on the warranty registration card acknowledges that you have read this customer license agreement and agree to its terms. You further agree that the license agreement is the complete and exclusive statement of the agreement between yourself and DSD BUSINESS SYSTEMS, INC. and supersedes any proposal or prior agreement, oral or written, and any other communications between yourself and DSD BUSINESS SYSTEMS, INC or dealers and distributors of DSD BUSINESS SYSTEMS, INC products relating to the subject matter of this agreement.
10. **ASSIGNMENT.** You may not sublicense this license or the Program. You may not rent this Program or the use of the Program. You may not transfer this copy of the Program unless the recipient agrees in writing (and a copy of such acceptance is sent to DSD BUSINESS SYSTEMS, INC., 5120 Shoreham Place, Suite 280, San Diego, California, 92122) to accept all of the terms of this Customer License Agreement. Any attempt by you to otherwise rent, sublicense, assign or transfer any of the rights, duties or obligation hereunder is void and may be the cause for immediate termination of the license. DSD BUSINESS SYSTEMS, INC. may assign any of its rights and obligation under this agreement to any party without notice to you.

## Fax Transmittal Form

---

To:	<b>DSD Business Systems Customer Service</b>		Fax:	<b>858/550-4900</b>
From:	Name:		Phone:	
	Company:		Fax:	
Date:	/ /	# Pgs Including this Page:		
Subject:	Check One: <input type="checkbox"/> Product Problem <input type="checkbox"/> Suggestions			
Product:	<b>MRSC South Carolina Quarterly Unemployment &amp; W-2 Reporting</b>		Version:	<b>5.40</b>

This page may be copied