



# **DSD Business Systems**

Sage 100 Enhancements

**MCDD**

**Multi-Currency USD Demo Data**

Version 7.00



Information in this document is subject to change without notice.

Copyright 1993-2021, DSD Business Systems All rights reserved.

Multi-Currency USD Demo Data User's Manual  
Version 7.00

18 June, 2021

DSD Business Systems  
5120 Shoreham Place  
Suite 280  
San Diego, CA 92122  
858/550-5900 8:00am to 5:00pm PST  
858/550-4900 Fax

### Trademarks

**ProvideX®** is a Trademark of Sage Software.

**Windows** is a trademark of Microsoft Corporation.

**Sage 100®** is a registered trademark of Sage Software.

**PXPlus®** is a registered trademark of PVX Plus technologies

All other product names and brand names are service marks, and/or trademarks or registered trademarks of their respective companies.

This documentation and the software described herein, is prepared and published under license. Sage Software has not tested or verified either the software or any representation in this documentation regarding the software. Sage Software does not make any warranty with respect to either this documentation or the software described herein, and specifically disclaims any warranty, express or implied, with respect hereto, including the warranties of fitness for a particular purpose and merchantability.

## Table of Contents

|   |           |
|---|-----------|
| <b>SECTION A: INTRODUCTION</b>  | <b>4</b>  |
| WEB RESOURCES .....   | 4         |
| SUPPORT .....   | 4         |
| MULTI-CURRENCY USD DEMO DATA FEATURES.....                                  | 5         |
| <b>SECTION B: GETTING STARTED</b>   | <b>6</b>  |
| REQUIRED LEVELS .....   | 6         |
| INSTALLATION .....  | 6         |
| DSD ENHANCEMENT CONTROL PANEL.....  | 8         |
| <b>SECTION C: SETUP</b>   | <b>10</b> |
| C/X MULTI-CURRENCY MODULE .....   | 10        |
| Multi-Currency Options .....  | 10        |
| Currency Code Maintenance.....  | 12        |
| INVENTORY MULTICURRENCY MODULE (IMMC), FOREIGN PRICE/COST MAINTENANCE ..... | 13        |
| Foreign Price/Cost Maintenance .....  | 13        |
| MULTICURRENCY REPORTS MENU.....   | 13        |
| <b>SECTION D: SYSTEM OPERATIONS</b>   | <b>14</b> |
| GENERAL LEDGER .....  | 14        |
| BANK RECONCILIATION .....   | 14        |
| Bank Code Maintenance .....   | 14        |
| ACCOUNTS PAYABLE.....   | 14        |
| Division Maintenance.....   | 14        |
| Vendor Maintenance / Inquiry .....  | 14        |
| Data Entry.....   | 15        |
| ACCOUNTS RECEIVABLE.....  | 15        |
| Division Maintenance.....   | 15        |
| Customer Maintenance / Inquiry .....  | 15        |
| Data Entry.....   | 16        |
| INVENTORY MANAGEMENT .....  | 16        |
| Foreign Price/Cost Maintenance .....  | 16        |
| Inventory Maintenance.....  | 16        |
| PURCHASE ORDER.....   | 17        |
| SALES ORDER .....   | 17        |
| ADDITIONAL FEATURES .....   | 17        |
| <b>SECTION E: UNINSTALL DSD ENHANCEMENTS</b>                                | <b>18</b> |
| <b>LICENSE AGREEMENT</b>  | <b>21</b> |
| <b>FAX TRANSMITTAL FORM</b>   | <b>23</b> |

## Section A: Introduction

---

This manual contains a description and instructions for this DSD product. Operating instructions are included for the features added by this product to Sage 100. For instructions on using Sage 100, refer to the appropriate Sage 100 manual, or call your Sage 100 reseller. DSD Business Systems offers excellent Sage 100 support, at an hourly rate.

### Web Resources

DSD web site: <http://www.dsdinc.com>

The Enhancement page contains:

- Current Release Schedule*
- Purchasing Information*
- Installation Instructions*
- Product Support*
- Enhancement Links*

MCDD Multi-Currency USD Demo Data:

<http://www.dsdinc.com/enhancement/multi-currency-demo-data-5/>

The product web page contains:

- Product Description*
- Web Links*
- Current Product Version Table*
- Product Installation File Download*
- Product Manual in .pdf Format*
- Revision History*
- FAQ*

### Support

DSD provides product support through Sage 100 resellers. Support is provided for the current version. Older versions are supported at an hourly rate. DSD's telephone number is **858-550-5900**. Fax: **858-550-4900**.

For a hard error, where the program displays an error dialog, report:

- Error number.*
- Program name.*
- Line number.*
- Program version.*

*Exact sequence that caused the error, including menus and menu selections.  
Other pertinent information.*

If leaving a message or faxing, please include:

*Your name.*

*Your phone number (and fax if applicable) and extension.*

It is possible to be unable to duplicate a problem, because of data corruption or because we have not exactly duplicated a particular operating environment. In such circumstances, we can only continue to try to fix the problem if we can either access the system with Symantec PCAnywhere or by some other means access or duplicate the system.

### ***Multi-Currency USD Demo Data Features***

The **Multi-Currency Demo Data** enables the **Sage 100** reseller the ability to effectively demonstrate the features of DSD's Multi-Currency enhancement to an end-user. Demo data has been created for the **ABC Company Code** for all distribution modules with the U.S. Dollar as the Base Currency Code.

## Section B: Getting Started

### CAUTION

- **If you reinstall or upgrade one of the Sage 100 modules listed in the following table, you must also reinstall this Enhancement.**
- Enhancements from different Sage Developers are generally not designed to work together. If installed together, problems are likely to occur.
- **Check with DSD before installing more than one Enhancement.**

### Required Levels

| Sage 100 Module | Module Required | Required Level |
|-----------------|-----------------|----------------|
| DSD CUMC        | Y               | 7.00           |
| DSD APMC        | N               | 7.00           |
| DSD ARMC        | N               | 7.00           |
| DSD BRMC        | N               | 7.00           |
| DSD IMMC        | N               | 7.00           |
| DSD POMC        | N               | 7.00           |
| DSD RAMC        | N               | 7.00           |
| DSD SOMC        | N               | 7.00           |

### Installation

1. **Back-up:** Exit all Sage 100 sessions. Back-up existing Sage 100 data.
2. **Check Levels:** Sage 100 module levels **must match** those listed above.
3. **Run Enhancement Setup Program:** Save the executable installation program (sent to you or downloaded from our website) in a convenient location on the Sage 100 server. Launch the program from Windows Explorer or by selecting Start/Run, and then browse for the file in the location you saved it. Follow on-screen instructions.
4. **Send your Sage Serial Number to your DSD Representative:** Send your Sage Serial Number to your DSD representative in order for us to send you back the encrypted keys to unlock your system. This serial number can be found in Library Master\Setup\System Configuration, Tab 3. Registration as Serial Number.
5. **Re-Start Sage 100:** Sage 100 will be updated.
6. **Unlock the Enhancement:** DSD Enhancements must be unlocked to run. When any part of the Enhancement is run for the first time, the **DSD Enhancement License Agreement and Activation** window will appear. Follow the steps shown on that window. *You can click the Help button for more detailed instructions.*

**Note:** On the next page is a screenshot of the DSD Enhancement License Agreement and Activation window.

After accepting the License Agreement, you can then select the type of unlocking that you'd prefer. The choices are File, Web, Demo and Manual Entry.

**File Unlock:** After receiving your encrypted serial number key file from DSD, and placing that file in the MAS90/SOA directory, selecting this option will unlock all products keys contained in the file. This means you can unlock all enhancements at once using this option.

**Web Unlock:** If the system that is running the DSD Enhancement *has web access* and you *have sent DSD your Sage Serial number*, you can unlock the Enhancement without assistance using Web Unlock. When this option is selected, the program will attempt to download encrypted serial number key file from DSD *and then proceed to unlock all enhancements contained in the file*.

- *The Sage 100 system that is being used must have web access for this option to be effective.*
- *You can send your Sage Serial Number to your DSD Enhancements sales representative.*

**Demo Unlock:** If a Demo mode is available for the Enhancement you're running, you will be able to Demo unlock the product without assistance from DSD for demo purposes.

- *Creating a Demo Unlock is a good way to temporarily unlock DSD Enhancements off-hours, if you do not have web or email access. Later, you can unlock the product fully, during business hours.*

**Manual Entry Unlock:** If you want to unlock a single enhancement using a single encrypted key, you can select this option and enter the 64 character key you receive from DSD by copy and paste.

**Note:** *You can also unlock a DSD Enhancement through the **DSD Enhancement Control Panel** found on the Library Master Utilities Menu. Then, select the Enhancement with your mouse from the list of Enhancements and click the **Unlock Product** button on the right side of the window.*

- Convert Data:** After registration, the Data Conversion window will appear. Follow on-screen instructions to complete data conversion. *You can exit the conversion program without converting data. The Enhancement will not proceed, however, until data is converted. If you enter an enhanced program and data has not been converted, the conversion program will run again.*

## DSD Enhancement Control Panel

Starting with version 3.61, all DSD Enhancement products include DSD's Enhancement Control Panel. The **DSD Enhancement Control Panel** is accessed from the **Library Master Utilities** menu.

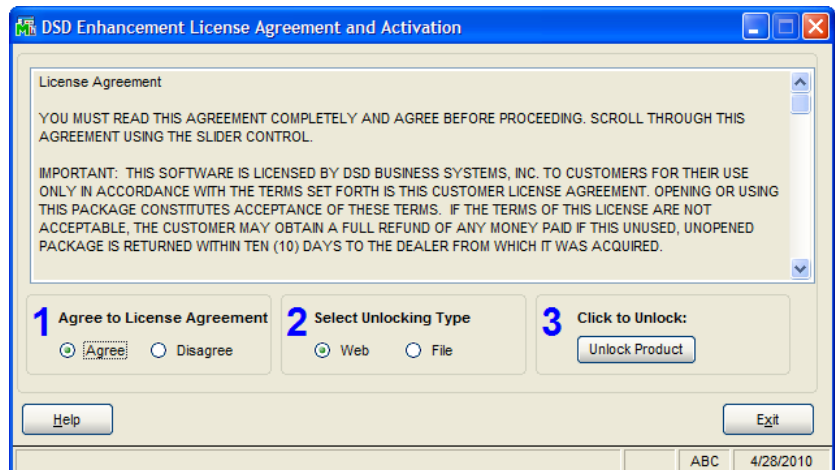
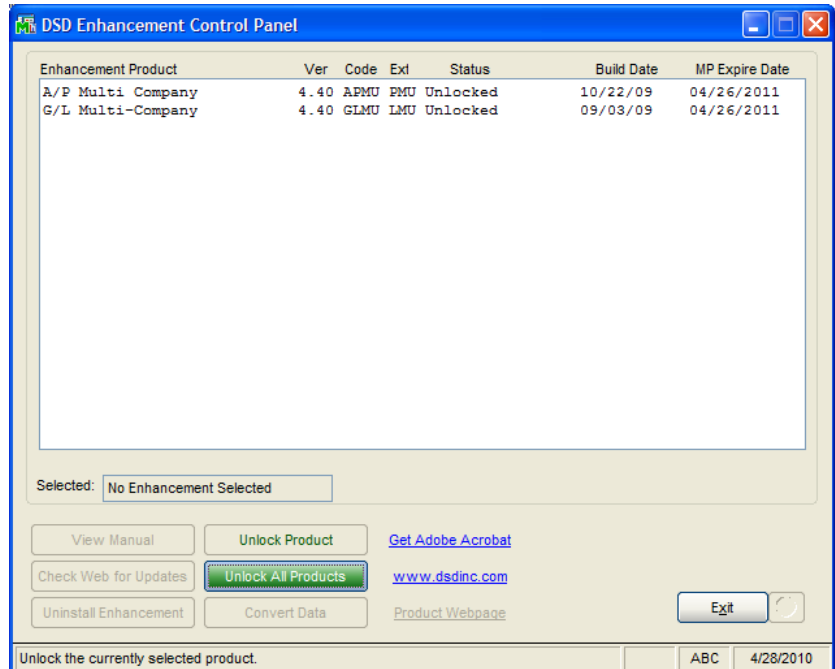
The DSD Enhancement Control Panel is a simple to use yet powerful system to help maintain DSD Enhancements installed on a Sage 100 system. To use it, select an Enhancement product from the list on the window and then click the button, on the right side of the window, which corresponds with the desired task.

**View Manual:** This button will display the product manual for the selected Enhancement using Adobe Acrobat. For this to be possible, the PDF file for the corresponding manual must be in the "MAS90/PDF" folder in the Sage 100 system. If the file is not present, and the system has web access, the correct PDF file will be automatically downloaded from the DSD website, put into the "MAS90/PDF" folder and then displayed.

**Check the Web for Updates:** This button will check the DSD website to see what the current build is the selected Enhancement and alert the user if a later version is available. *This requires an FTP web connection on the Sage 100 system.*

**Unlock Product:** This will cause the DSD Enhancement License Agreement and Activation window to appear. Using this window is described on the previous page. *This button is disabled if the selected Enhancement is already unlocked.*

**Unlock All Products:** This will cause the DSD Enhancement All License Agreement and Activation window to appear. This window is similar to the one described on the previous page, but has only web and file as options to unlock. *This button is never disabled.*





**Convert Data:** After verification, the selected Enhancements data conversion program will run. Data conversion is non-destructive, and may be triggered any number of times. Sometimes this is required to fix data records imported or updated from a non-enhancement installation.

**Help:** The Help button, located at the bottom right of the window, opens an HTML help file .

**Get Adobe Acrobat:** Opens the Adobe Acrobat website to the page where Acrobat can be downloaded and installed.

**Uninstall Enhancement** If this option is available, then selecting this button will start the un-install process, removing the enhancement from the system.

There are also links to the DSD website and the Enhancement page on that site.

## Section C: Setup

### C/X Multi-Currency Module

On the Multi-Currency Main Menu, there are 3 maintenance/setup programs: Multi-Currency Options, Currency Code Maintenance, and Foreign Price/Cost Maintenance.

#### Multi-Currency Options

This is the starting point in setting up the Currency Module.

As you can see, the Multi-Currency Module has been Enabled. *This must be checked in EVERY Company even if foreign transactions are not required.*

The Base (or Functional) Currency Code has been set here to the USD (US Dollar).

There is no Multi-Currency Supervisor password set up, it can be used to force a supervisor password if a Currency Code or Rate change is available.

The Default Currency for Reports is set to Base Currency. You can change this if you want the reports to default to Entry Currency.

The **Use One Exchange Rate** check box is explained below as it affects Currency Code Maintenance.

Three new G/L accounts are set up in G/L Account Maintenance:

|                                 |                         |
|---------------------------------|-------------------------|
| Currency Gain/Loss              | 970-00-XX (by Division) |
| Currency Roundoff               | 970-00-00               |
| Currency Roundoff for Reporting | 315-00-00               |

The **Currency Gain/ Loss** G/L Account is used in A/P and A/R Division Maintenance (if APMC or ARMC are in use) to post Realized Gain/Loss when Cash is applied, and are documented in those User Guides.

Roundoff G/L Accounts are needed in foreign currency accounting because every foreign accounting transaction can contain multiple Lines of distribution, but also posts a single total amount. Each individual Line's conversion to Base Currency is performed separately from the total, and if the addition of all the Line amounts differs slightly from the total (usually by one or two cents), a GL Account is needed to balance the transaction.

If GLMC is installed, the **G/L Roundoff Account** is used in General Journal Entry and Transaction Entry. Also the **Roundoff for Reporting** Account is used for inevitable recalculations when printing G/L reports and financials *in a foreign currency*.

The **FASB 52** tab is where you setup the FASB 52 Currency, if applicable. When setting up company information for a Multi-Currency System, there are 2 possibilities:

- (1) Those companies that require FASB 52-compliant processing, and
- (2) Those companies that **DO NOT** require FASB 52-compliant processing.

The DSD Multi-Currency Demo Data falls under possibility 2, in that there is no FASB 52-related information setup in the ABC Demo Data company. If you need assistance in setting up the FASB-52 data for demonstration purposes, please refer to the G/L Multi-Currency (GLMC) manual, or contact DSD Business Systems. It is not used in MCDD.

The **Integrate** tab shows which Multi-Currency Modules are installed. These may not be changed, they are for information only.

The **FXMC Auto Rates** tab is enabled when the **FXMC Auto Download Rates** subscription is installed. Refer to the CUMC User Guide for information on the setup and use of this module.

Multi-Currency Options (ABC) 5/31/2018

1. Main    2. FASB 52    3. Integrate    4. FXMC Auto Rates

Enable Auto Exchange Rate Download?

Override Existing Rate entries?

Save Rate files after downloading?

Folder to store Rates and Download Log

Program/Script for Windows Scheduler

Add arguments for Windows Scheduler

Start in Directory for Windows Scheduler

Warn if daily rate is missing

Accept    Cancel

### Currency Code Maintenance

There are several currency codes set up in Currency Code Maintenance. The U.S. Dollar (USD) has been selected as Base Currency (also referred to as Primary or Functional Currency), which has no Rates assigned. , CAD, EUR, GBP, MXN

There are many web sites available that list current exchange rates. We use XE.COM, there is a link to their site shown.

The “Get Today’s Rates” button obtains the Rate from XE.com.

You’ll also notice that there are four different Exchange Rates that you can setup per day: AR/SO Rate, AP/PO Rate, GL Rate, and FASB 52 Rate. Many companies only use one Exchange Rate, so when you enter the AR/SO Rate, the program automatically defaults the other three column Exchange Rates to that rate.

Currency Code Maintenance (ABC) 5/31/2018

Currency Code: EUR  
Name: Euro  
Source: XE <http://www.xe.com/currencyconverter>

Base Currency:  Currency Plural: Euros  
FASB 52 Currency:  Currency Symbol: €  
ISO Currency Code: EUR ISO Currency Name: Euro Member Countries, Euro

Exchange Rates  
Year: 2018

|     | Date      | AR/SO Rate | AP/PO Rate | GL Rate    | FASB 52 Rate |
|-----|-----------|------------|------------|------------|--------------|
| 178 | 5/31/2018 | 0.66254000 | 0.66254000 | 0.66254000 | 0.66254000   |
| 179 | 5/30/2018 | 0.66435000 | 0.66435000 | 0.66435000 | 0.66435000   |
| 180 | 5/29/2018 | 0.66310000 | 0.66310000 | 0.66310000 | 0.66310000   |
| 181 | 5/28/2018 | 0.66108000 | 0.66108000 | 0.66108000 | 0.66108000   |
| 182 | 5/27/2018 | 0.66112000 | 0.66112000 | 0.66112000 | 0.66112000   |

Accept Cancel Delete

(If the **Use One Exchange Rate** was checked in Multi-Currency Options, only one rate Column appears.)

The **Currency Plural** is used in Check Printing.

The **Currency Symbol** is available in all Forms printing to add to any amounts.

The **ISO Currency Code** is need to look up the **Currency Symbol** and to validate the Currency if **FXMC** is in use.

You may select the Printer Button to print a Currency Code Listing.

### Inventory Multicurrency Module (IMMC), Foreign Price/Cost Maintenance

#### Foreign Price/Cost Maintenance

**NOTE:** This program is only available if **IMMC** has been installed and setup.

Several entries have been created in Foreign Price/Cost Maintenance. These prices and costs will be reflected when doing data entry in Sales Order and Purchase Order. See the IMMC User Guide for more information.

The screenshot shows a window titled 'Foreign Price Cost' with a table containing 11 records. The table has columns for Currency Code, Item Code, Foreign Price, Foreign Cost, Use Price In SO, Use Cost In PO, and Use Misc Cost In ARSO. Below the table are search and filter controls, and a status bar at the bottom indicates 'Found 11 records'.

| Currency Code | Item Code      | Foreign Price | Foreign Cost | Use Price In SO | Use Cost In PO | Use Misc Cost In ARSO |
|---------------|----------------|---------------|--------------|-----------------|----------------|-----------------------|
| EUR           | /200-DA        | 60.00         | 20.00        | Y               | Y              | Y                     |
| EUR           | 1001-HON-H252  | 45.00         | 40.00        | Y               | Y              |                       |
| EUR           | OAK CASK 100   | 3,800.00      | 1,600.00     | Y               | Y              |                       |
| EUR           | OAK CASK 1000  | 14,000.00     | 8,000.00     | Y               | Y              |                       |
| EUR           | OAK CASK 500   | 7,900.00      | 2,900.00     | Y               | Y              |                       |
| GBP           | 1001-HON-H252  | 42.00         | 20.00        | Y               | Y              |                       |
| GBP           | BOILER 10KL    | 4,600.00      | 2,900.00     | Y               | Y              |                       |
| GBP           | PUMP BASS      | 480.00        | 240.00       | Y               | Y              |                       |
| GBP           | PUMP GUINNESS  | 350.00        | 180.00       | Y               | Y              |                       |
| MXN           | BEER BOTTLE 16 | 1.50          | 1.00         | Y               | Y              |                       |
| MXN           | BEER BOTTLE 32 | 2.70          | 1.80         | Y               | Y              |                       |

### Multicurrency Reports Menu

The following reports are available from the Multi-Currency Reports Menu:

**Currency Code Listing:** This lists the Currency Code information and Exchange Rates.

**Currency Audit Report:** This is a Masterfile Audit listing

**Foreign Price/Cost Listing:** This is only available if you have IMMC Installed, and prints the information entered in Foreign Price/Cost Maintenance.

**Foreign Item Pricing Information:** This is only available if you have IMMC Installed, and prints the information entered in Inventory Maintenance for Foreign Price/Cost breaks.

**A/P Unrealized Gain/Loss Report:** This is only available if you have APMC Installed, and prints what the Realized Gain/Loss would be if all open A/P Invoices were paid as of a certain date. Users can use this report to post unrealized gain/loss. See the **APMC** module for more information.

**A/R Unrealized Gain/Loss Report:** This is only available if you have ARMC Installed, and prints what the Realized Gain/Loss would be if all open A/R Invoices were paid as of a certain date. Users can use this report to post unrealized gain/loss. See the **ARMC** module for more information.

## Section D: System Operations

### General Ledger

The Demo Data provided only has the three new GL Accounts setup. Many accounts will show the Multicurrency G/L Detail Information in the Transactions Tab.

### Bank Reconciliation

There are only two places in the B/R module that need demonstrating: Bank Code Maintenance and Check, Deposit, & Adjustment Entry. No Multi-Currency Data has been posted to the Check, Deposit, & Adjustment Entry in this release of MCDD.

### Bank Code Maintenance

There are several new Bank Codes that have been added for foreign bank accounts.

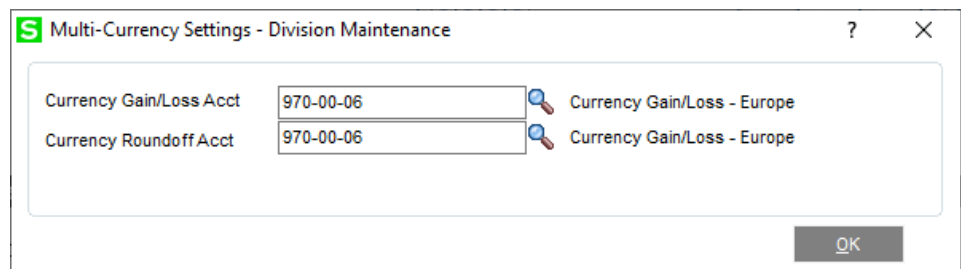
Select the **Currency Button** to display the Currency Code of each Bank Code.

### Accounts Payable

There are two places in A/P Setup to demonstrate: Division Maintenance and Bank Code Maintenance. Please refer to the B/R module for a description on the Bank Code Demo Data.

### Division Maintenance

Several new Divisions have been added to the Division Masterfile for Multi-Currency vendors. New accounts have been set up in Division Maintenance for all divisions. Select the **Currency Button** to access these accounts:



### Vendor Maintenance / Inquiry

There are several new vendors set up in Vendor Maintenance. There are also a number of transactions, such as invoice history, check history, and purchase orders set up for all of these vendors.

When demonstrating Vendor Maintenance to an end-user, show off these features:

- 1) Main Panel – **Currency Button** – set up of Currency Codes
- 2) Statistics Panel – **Amounts In Toggle Button**

- toggle between Historical Currency and Base Currency.
- 3) Summary Panel – **Amounts In** Toggle Button
  - toggle between Historical Currency and Base Currency.
- 4) History Panel – **Amounts In** Toggle Button
  - toggle between Historical Currency and Base Currency.
- 5) Invoices Panel – **Amounts In** Toggle Button
  - toggle between Historical, Base, and Entry Currency.
- 6) Transactions Panel – **Amounts In** Toggle Button
  - toggle between Historical, Base, and Entry Currency.
- 7) Checks Panel – **Amounts In** Toggle Button
  - toggle between Historical, Base, and Entry Currency.
- 8) P/O's Panel – **Amounts In** Toggle Button
  - toggle between Historical, Base, and Entry Currency.
- 9) **Drill Down!**
  - drill down from Invoices, Checks, and P/O's panel.

### Data Entry

Of course you'll want to demonstrate Invoice Data Entry, Manual Check Entry, and Check Entry to the end-user. Use the foreign vendors in your demonstration and show how it defaults to the currency and exchange rate, and how you can override these settings.

### Accounts Receivable

There are two places in A/R Setup to demonstrate: Division Maintenance and Bank Code Maintenance. Please refer to the B/R module for a description on the Bank Code Demo Data.

### Division Maintenance

Several Divisions have been added to the Division Masterfile for Multi-Currency customers. New accounts have been set up in Division Maintenance for all divisions. Select the **Currency Button** to access these accounts:

| Multi-Currency Settings - Division Maintenance |           | ? | ×                           |
|--|-----------|---|-----------------------------|
| Currency Gain/Loss Acct                        | 970-00-06 |   | Currency Gain/Loss - Europe |
| Currency Roundoff Acct                         | 970-00-06 |   | Currency Gain/Loss - Europe |
|  |           |   | OK                          |

### Customer Maintenance / Inquiry

There are several new customers set up in Customer Maintenance. There are also a number of transactions, such as invoice history and sales orders set up for all of these customers.

When demonstrating Customer Maintenance to an end-user, show off these features:

- 1) Main Panel – **Currency Button** – set up of Currency Codes
- 2) Statistics Panel – **Amounts In Toggle Button**
  - toggle between Historical Currency and Base Currency.
- 3) Summary Panel – **Amounts In Toggle Button**
  - toggle between Historical Currency and Base Currency.
- 4) History Panel – **Amounts In Toggle Button**
  - toggle between Historical Currency and Base Currency.
- 5) Invoices Panel – **Amounts In Toggle Button**
  - toggle between Historical, Base, and Entry Currency.
- 6) Transactions Panel – **Amounts In Toggle Button**
  - toggle between Historical, Base, and Entry Currency.
- 7) S/O's Panel – **Amounts In Toggle Button**
  - toggle between Historical, Base, and Entry Currency.
- 8) **Drill Down!** - drill down from Invoices and S/O's panel.

### Data Entry

Of course you'll want to demonstrate Invoice Data Entry, Repetitive Invoice Entry, and Cash Receipts Entry to the end-user. Use the foreign customers in your demonstration and show how it defaults to the currency and exchange rate, and how you can override these settings.

## Inventory Management

### Foreign Price/Cost Maintenance

The Foreign Price/Cost Maintenance is accessible from the Multi-Currency Main Menu.

### Inventory Maintenance

If you have Foreign Price/Costs setup, then you can do Foreign Price Breaks off of the Foreign Price. Select the Pricing Button from the Inventory Maintenance Main Panel and change the currency of the price break. Note that the Foreign Price/Cost is displayed, and that all breaks can work off of that foreign price/cost.

The screenshot shows the 'Item Pricing Maintenance' window for item '1001-HON-H252' (HON 2 DRAWER LETTER FILE W/O LK). The pricing option is set to 'Customer Price Schedule' for customer '08-GUINNESS' (Guinness Brewing Co.) with a currency code of 'GBP'. The pricing method is 'Price Override', with a GBP Price of 84.000 and a GBP Cost of 32.750.

| Step | From Quantity | To Quantity | Unit Price |
|------|---------------|-------------|------------|
| 1    | 1             | 2           | 84.000     |
| 2    | 3             | 4           | 83.000     |
| 3    | 5             | 99,999,999  | 82.000     |
| 4    |               |             |            |
| 5    |               |             |            |

Buttons at the bottom: Accept, Cancel, Delete, and a help icon.



***Purchase Order***

Several purchase orders have been created for foreign Vendors:

You may use these purchase orders for demonstration purposes, or you may create new ones for the three new vendors. You may also drill down to these PO's from Vendor Maintenance or Item Maintenance.

***Sales Order***

Several sales orders have been created for foreign Customers.

You may use these sales orders for demonstration purposes, or you may create new ones for the three new customers. You may also drill down to these orders from Customer Maintenance or Item Maintenance.

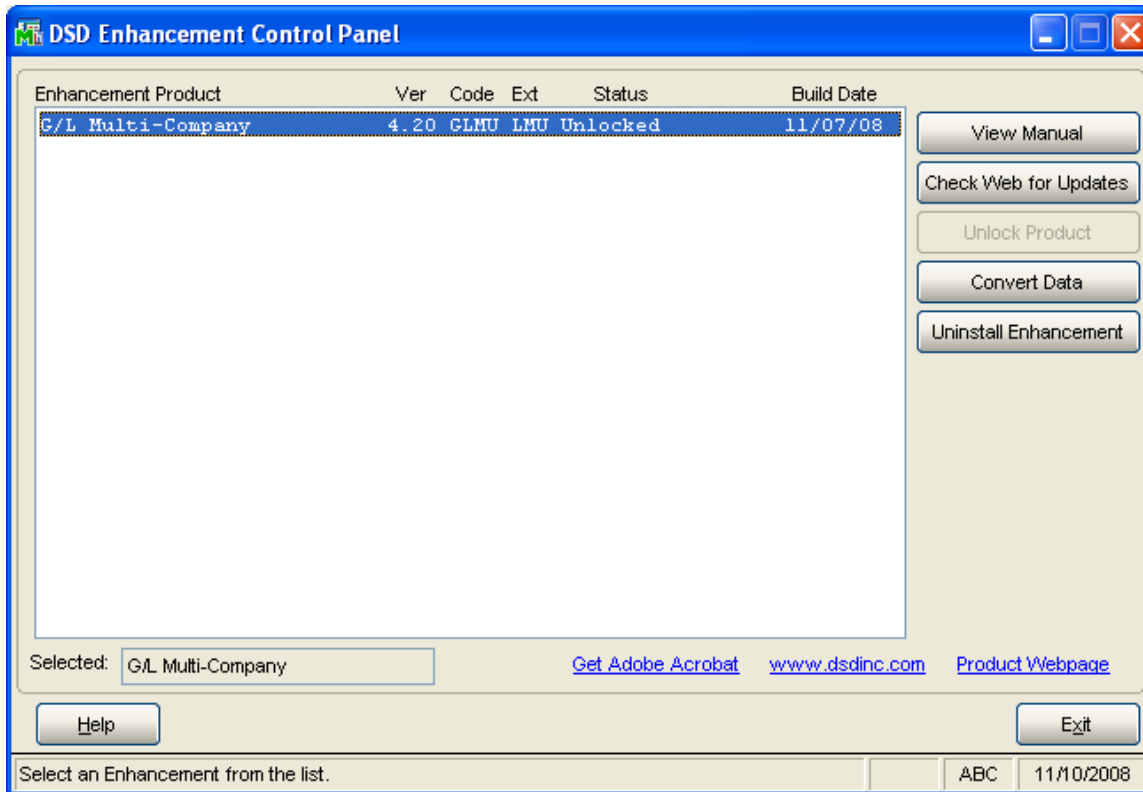
***Additional features***

In addition to the features listed in this manual, you may want to show off:

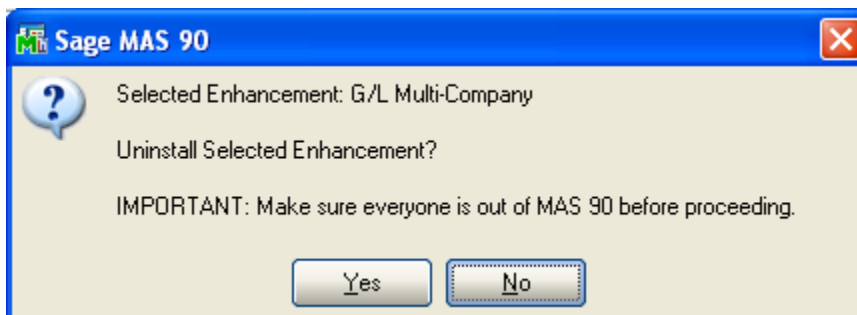
1. Crystal Reports – new Multi-Currency Data fields.
2. Reporting – Currency Pop-up panel allows currency selection.

## Section E: Uninstall DSD Enhancements

A DSD Enhancements Uninstall Utility has been provided for the purposes of removing DSD Enhancements from your Sage 100 System. This utility may be accessed from the **DSD Enhancement Control Panel** menu option on the **Library Master / Utilities** menu.

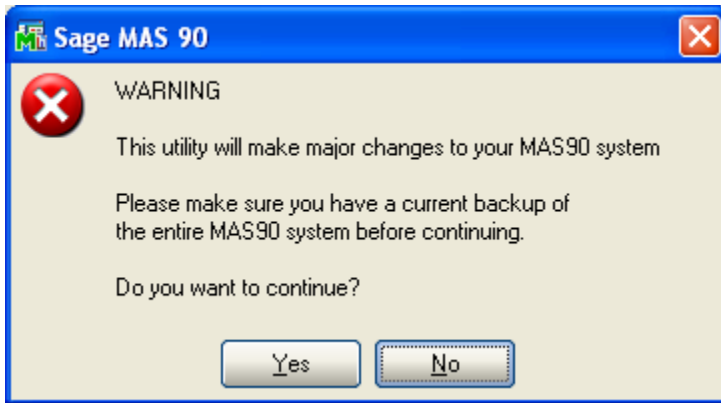


When accessing the **DSD Utility Suite**, select the enhancement that you wish to Uninstall, and then select the **Uninstall Enhancement** button. The following message box will appear:



Select **No** to exit the Uninstall Process.  
 Select **Yes** to continue with the Uninstall Process.

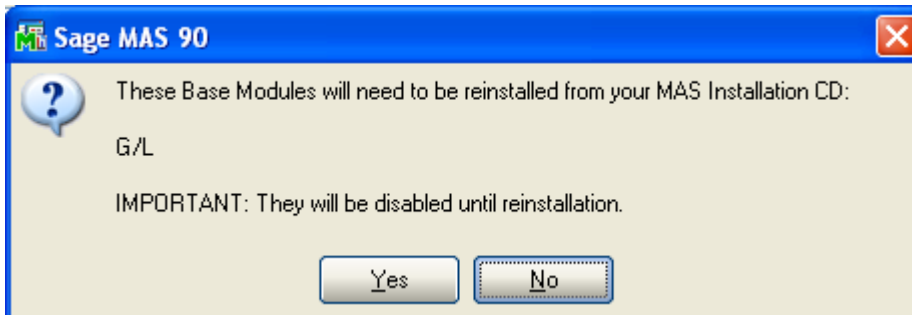
The following message box will appear, to remind you that a complete backup of your entire MAS90 system should be completed prior to uninstalling a DSD product.



Select **No** to exit the Uninstall Process.  
Select **Yes** to continue with the Uninstall Process.

After the Uninstall of the DSD Enhancement, you **MUST** reinstall certain standard Sage 100 modules, followed by reinstallation of MAS Service Packs / Updates, if applicable.

The following message box will appear, and will display which of those specific Sage 100 modules you must reinstall afterwards.

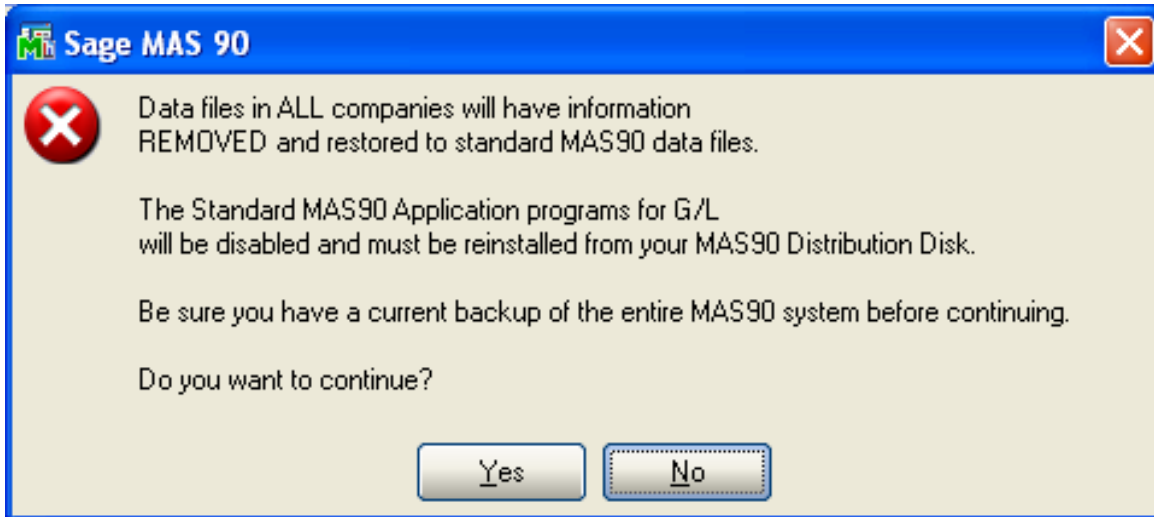


Select **No** to exit the Uninstall Process.  
Select **Yes** to continue with the Uninstall Process.

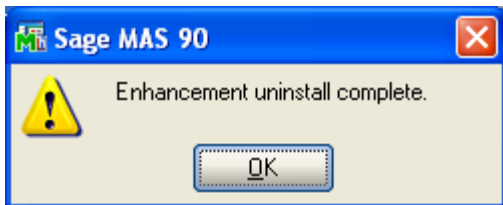
The following message box will appear, displaying the final warning message.

Select **No** to exit the Uninstall Process.

Select **Yes** to continue with the Uninstall Process. At this point, the DSD Enhancement will be removed from the Sage 100 system.



After completion of the Uninstall, the following message box will appear. Select OK to continue.



Now that the Uninstall process is completed, you must:

- Reinstall the applicable standard Sage 100 modules
- Reinstall the latest Sage 100 Service Pack/Updates, if applicable.
- Reinstall any other DSD Enhancements or Developer products that are affected from the reinstallation of the standard Sage 100 module(s).

## License Agreement

---

**IMPORTANT:** THIS SOFTWARE IS LICENSED BY DSD BUSINESS SYSTEMS, INC. TO CUSTOMERS FOR THEIR USE ONLY IN ACCORDANCE WITH THE TERMS SET FORTH IN THIS CUSTOMER LICENSE AGREEMENT. OPENING OR USING THIS PACKAGE CONSTITUTES ACCEPTANCE OF THESE TERMS. IF THE TERMS OF THIS LICENSE ARE NOT ACCEPTABLE, THE CUSTOMER MAY OBTAIN A FULL REFUND OF ANY MONEY PAID IF THIS UNUSED, UNOPENED PACKAGE IS RETURNED WITHIN TEN (10) DAYS TO THE DEALER FROM WHICH IT WAS ACQUIRED.

1. **LICENSE. DSD BUSINESS SYSTEMS, INC.,** a California corporation as Licensor and owner hereby agrees to grant you as Licensee a non-exclusive license to use the enclosed software subject to the terms and restrictions set forth in this License Agreement. Title in and ownership of all programs and program enhancements or modifications written by DSD Business Systems, Inc. shall remain at all times vested in DSD Business Systems, Inc. The right granted by this Customer License Agreement and your payment of the non-refundable License fee is the right to use the Program in accordance with the terms of this Customer License Agreement. Delivery of a copy of the Program to you is made solely to enable you to exercise this right.
2. **COPYRIGHT.** This Program is copyrighted and all rights are reserved by DSD BUSINESS SYSTEMS, INC. and SAGE, INC. You may not copy or reproduce any part of the Program except to copy the Program for backup purposes. If you make a backup copy you must reproduce and include the copyright notice on it. The distribution of the product is intended for the use of the original Licensee only and for use only on the computer systems specified. Lawful users of this Program are hereby licensed only to read the Program from its medium into the memory of a computer only for the purpose of executing the program.

The documentation is also copyrighted and all rights are reserved. This document may not, in whole or in part, be copied, photocopied, reproduced, translated, transmitted or reduced to any electronic medium of machine readable form without prior consent, in writing, from DSD BUSINESS SYSTEMS, INC.

The Licensee recognizes that DSD BUSINESS SYSTEMS, INC. has expended considerable time, effort and money to develop the licensed Software and Manual and that DSD BUSINESS SYSTEMS, INC. will be substantially damaged by its unauthorized use, sale or distribution. In addition to recovery of all damages and the obtaining of injunctive relief as provided by law, in the event legal action must be taken to enforce this provision, the Licensee will pay DSD BUSINESS SYSTEMS, INC. all reasonable legal fees incurred in enforcing the rights of DSD BUSINESS SYSTEMS, INC. under this provision.

3. **RESTRICTIONS ON USE AND TRANSFER.** The original and any backup copies of the Program and its documentation are to be used only in connection with a single computer or network fileserver. You may physically transfer the Program from one computer to another, provided that the Program is used in connection with only one computer or network fileserver at a time. You may not distribute copies of the Program Documentation to others. The Program is to be used exclusively for business purposes and not for personal, family or household use. YOU MAY NOT USE, COPY, MODIFY, OR TRANSFER THE PROGRAM, IN WHOLE OR IN PART, EXCEPT AS EXPRESSLY PROVIDED FOR IN THIS LICENSE AGREEMENT. IN ADDITION YOU MAY NOT MODIFY, ADAPT, TRANSLATE, REVERSE ENGINEER, DECOMPILE, DISASSEMBLE THE PROGRAM, OR CREATE ANY DERIVATIVE WORK BASED UPON THE PROGRAM.
4. **WARRANTY.** DSD BUSINESS SYSTEMS, INC. software is licensed "as is" with no warranties of any kind, either expressed or implied, other than the following: DSD BUSINESS SYSTEMS will repair any bugs or flaws found in the software. Flaws of a critical nature which affect the basic functionality of the software will be repaired on an "emergency" basis, with a corrected distribution diskette sent via UPS Blue or equal. Flaws of a non-critical or cosmetic nature will be repaired on a timely basis, and a corrected distribution diskette sent via UPS ground or regular mail. All incidental or consequential damages that result from any defect in the software, even if DSD Business Systems, Inc. has been advised of the possibility of such damages will be assumed by you.

5. **LIMITED WARRANTY FOR DISKETTES.** To the original licensee only, DSD BUSINESS SYSTEMS, INC. warrants the magnetic diskette on which the Program is recorded to be free from defects in materials and faulty workmanship under normal use and service for a period of ninety days from the date the Program is delivered. Any implied warranties of merchantability and fitness for a particular purpose are limited in duration to the period of ninety (90) days from the date of delivery. If, during this 90 day period, a defect in the diskette should occur, the diskette may be returned DSD BUSINESS SYSTEMS, INC., 5120 Shoreham Place, Suite 280, San Diego, California, 92122, or to any authorized DSD BUSINESS SYSTEMS, INC. Dealer, and the diskette will be replaced without charge to you, provided that you have previously returned the Warranty Registration Card along with a copy of your sales receipt for the Program.
6. **NO OTHER WARRANTIES.** No dealer or distributor of DSD BUSINESS SYSTEMS, INC. products or any agent of DSD BUSINESS SYSTEMS, INC. is authorized to make any representation of warranty with respect to the Program except those expressly stated in the Customer License Agreement.
7. **LIMITATION OF LIABILITY.** Neither DSD BUSINESS SYSTEMS, INC. nor anyone else who has been involved in the creation, production or delivery of this program shall be liable for any direct, incidental or consequential damages.
8. **TERM.** This license is effective until terminated. You may terminate it at any time by returning the Program and Documentation together with all copies, modifications and merged portions in any form to DSD BUSINESS SYSTEMS, INC. The license will also be terminated by DSD BUSINESS SYSTEMS, INC. immediately and without notice if you fail to comply with any term or condition of this License Agreement.
9. **ACKNOWLEDGMENT.** Your opening this package, use of this program or signature on the warranty registration card acknowledges that you have read this customer license agreement and agree to its terms. You further agree that the license agreement is the complete and exclusive statement of the agreement between yourself and DSD BUSINESS SYSTEMS, INC. and supersedes any proposal or prior agreement, oral or written, and any other communications between yourself and DSD BUSINESS SYSTEMS, INC or dealers and distributors of DSD BUSINESS SYSTEMS, INC products relating to the subject matter of this agreement.
10. **ASSIGNMENT.** You may not sublicense this license or the Program. You may not rent this Program or the use of the Program. You may not transfer this copy of the Program unless the recipient agrees in writing (and a copy of such acceptance is sent to DSD BUSINESS SYSTEMS, INC., 5120 Shoreham Place, Suite 280, San Diego, California, 92122) to accept all of the terms of this Customer License Agreement. Any attempt by you to otherwise rent, sublicense, assign or transfer any of the rights, duties or obligation hereunder is void and may be the cause for immediate termination of the license. DSD BUSINESS SYSTEMS, INC. may assign any of its rights and obligation under this agreement to any party without notice to you.

## Fax Transmittal Form

---

|          |  |                            |          |                     |
|----------|--|----------------------------|----------|---------------------|
| To:      | <i>DSD Business Systems Customer Service</i>   |                            | Fax:     | <i>858/550-4900</i> |
| From:    | Name:  |                            | Phone:   |                     |
|          | Company:   |                            | Fax:     |                     |
| Date:    | / /  | # Pgs Including this Page: |          |                     |
| Subject: | Check One: <input type="checkbox"/> Product Problem <input type="checkbox"/> Suggestions |                            |          |                     |
| Product: | <i>MCDD Multi-Currency USD Demo Data</i>   |                            | Version: | <i>7.00</i>         |

This page may be copied