



# DSD Business Systems

Sage 100 Enhancements

**MBBD**

**DSD / ScanForce Multi-Bin Basic  
Demo Data**

Version 7.00



Information in this document is subject to change without notice.

Copyright 1993-2021, DSD Business Systems All rights reserved.

DSD / ScanForce Multi-Bin Basic Demo Data User's Manual  
Version 7.00

21 April, 2021

DSD Business Systems  
8787 Complex Drive  
Suite 400  
San Diego, CA 92123  
858/550-5900 8:00am to 5:00pm PST  
858/550-4900 Fax

### Trademarks

**ProvideX®** is a Trademark of Sage Software.

**Windows** is a trademark of Microsoft Corporation.

**Sage 100®** is a registered trademark of Sage Software.

**PXPlus®** is a registered trademark of PVX Plus technologies

All other product names and brand names are service marks, and/or trademarks or registered trademarks of their respective companies.

This documentation and the software described herein, is prepared and published under license. Sage Software has not tested or verified either the software or any representation in this documentation regarding the software. Sage Software does not make any warranty with respect to either this documentation or the software described herein, and specifically disclaims any warranty, express or implied, with respect hereto, including the warranties of fitness for a particular purpose and merchantability.



## Table of Contents

---

<b>SECTION A: INTRODUCTION</b>	<b>5</b>
WEB RESOURCES.....	5
SUPPORT .....	5
DSD / SCANFORCE MULTI-BIN BASIC DEMO DATA FEATURES .....	6
<b>SECTION B: GETTING STARTED</b>	<b>7</b>
REQUIRED LEVELS.....	7
INSTALLATION.....	7
DSD ENHANCEMENT CONTROL PANEL.....	9
<b>SECTION C: SETUP</b>	<b>10</b>
INITIAL SETUP OF DSD / SCANFORCE MULTI-BIN BASIC WITH DEMO DATA .....	10
MULTI-BIN OPTIONS .....	11
LOCATION TYPE MAINTENANCE.....	12
WAREHOUSE BIN MAINTENANCE .....	12
SEGMENT CODE MAINTENANCE.....	12
PRODUCT LINE BIN MAINTENANCE.....	12
<b>SECTION D: SYSTEM OPERATIONS</b>	<b>13</b>
BIN LOCATION MAINTENANCE .....	13
DATA ENTRY TASKS .....	13

## Section A: Introduction

---

This manual contains a description and instructions for this DSD product. Operating instructions are included for the features added by this product to Sage 100. For instructions on using Sage 100, refer to the appropriate Sage 100 manual, or call your Sage 100 reseller. DSD Business Systems offers excellent Sage 100 support, at an hourly rate.

### Web Resources

DSD web site: <http://www.dsdinc.com>

The Enhancement page contains:

- Current Release Schedule*
- Purchasing Information*
- Installation Instructions*
- Product Support*
- Enhancement Links*

MBBD DSD / ScanForce Multi-Bin Basic Demo Data:

<http://www.dsdinc.com/enhancement/mbbd-multi-bin-basic-demo-data/>

The product web page contains:

- Product Description*
- Web Links*
- Current Product Version Table*
- Product Installation File Download*
- Product Manual in .pdf Format*
- Revision History*
- FAQ*

### Support

DSD provides product support through Sage 100 resellers. Support is provided for the current version. Older versions are supported at an hourly rate. DSD's telephone number is **858-550-5900**. Fax: **858-550-4900**.

For a hard error, where the program displays an error dialog, report:

- Error number.*
- Program name.*
- Line number.*
- Program version.*

*Exact sequence that caused the error, including menus and menu selections.  
Other pertinent information.*

If leaving a message or faxing, please include:

*Your name.*

*Your phone number (and fax if applicable) and extension.*

It is possible to be unable to duplicate a problem, because of data corruption or because we have not exactly duplicated a particular operating environment. In such circumstances, we can only continue to try to fix the problem if we can either access the system with Symantec PCAnywhere or by some other means access or duplicate the system.

### ***DSD / ScanForce Multi-Bin Basic Demo Data Features***

The **DSD / ScanForce Multi-Bin Basic Demo Data** enables the **Sage 100** reseller the ability to effectively demonstrate the features of the enhancement to an end-user. Demo data has been created for the **ABC Company Code** for all distribution modules.

## Section B: Getting Started

### CAUTION

- **If you reinstall or upgrade one of the Sage 100 modules listed in the following table, you must also reinstall this Enhancement.**
- Enhancements from different Sage Developers are generally not designed to work together. If installed together, problems are likely to occur.
- **Check with DSD before installing more than one Enhancement.**

### Required Levels

Sage 100 Module	Module Required	Required Level
MB	Y	7.00

### Installation

1. **Back-up:** Exit all Sage 100 sessions. Back-up existing Sage 100 data.
2. **Check Levels:** Sage 100 module levels **must match** those listed above.
3. **Run Enhancement Setup Program:** Save the executable installation program (sent to you or downloaded from our website) in a convenient location on the Sage 100 server. Launch the program from Windows Explorer or by selecting Start/Run, and then browse for the file in the location you saved it. Follow on-screen instructions.
4. **Send your Sage Serial Number to your DSD Representative:** Send your Sage Serial Number to your DSD representative in order for us to send you back the encrypted keys to unlock your system. This serial number can be found in Library Master\Setup\System Configuration, Tab 3. Registration as Serial Number.
5. **Re-Start Sage 100:** Sage 100 will be updated.
6. **Unlock the Enhancement:** DSD Enhancements must be unlocked to run. When any part of the Enhancement is run for the first time, the **DSD Enhancement License Agreement and Activation** window will appear. Follow the steps shown on that window. *You can click the Help button for more detailed instructions.*

**Note:** On the next page is a screenshot of the DSD Enhancement License Agreement and Activation window.

After accepting the License Agreement, you can then select the type of unlocking that you'd prefer. The choices are File, Web, Demo and Manual Entry.

**File Unlock:** After receiving your encrypted serial number key file from DSD, and placing that file in the MAS90/SOA directory, selecting this option will unlock all products keys contained in the file. This means you can unlock all enhancements at once using this option.

**Web Unlock:** If the system that is running the DSD Enhancement *has web access* and you *have sent DSD your Sage Serial number*, you can unlock the Enhancement without assistance using Web Unlock. When this option is selected, the program will attempt to download encrypted serial number key file from DSD *and then proceed to unlock all enhancements contained in the file*.

- The Sage 100 system that is being used must have web access for this option to be effective.
- You can send your Sage Serial Number to your DSD Enhancements sales representative.

**Demo Unlock:** If a Demo mode is available for the Enhancement you're running, you will be able to Demo unlock the product without assistance from DSD for demo purposes.

- Creating a Demo Unlock is a good way to temporarily unlock DSD Enhancements off-hours, if you do not have web or email access. Later, you can unlock the product fully, during business hours.

**Manual Entry Unlock:** If you want to unlock a single enhancement using a single encrypted key, you can select this option and enter the 64 character key you receive from DSD by copy and paste.

**Note:** You can also unlock a DSD Enhancement through the **DSD Enhancement Control Panel** found on the **Library Master Utilities Menu**. Then, select the Enhancement with your mouse from the list of Enhancements and click the **Unlock Product** button on the right side of the window.

- Convert Data:** After unlocking, the DSD Conversion Wizard will appear. Follow on-screen instructions to complete data conversion. *You can exit the conversion program without converting data. The Enhancement will not proceed, however, until data is converted. If you enter an enhanced program and data has not been converted, the conversion program will run again.*



### DSD Enhancement Control Panel

Starting with version 3.61, all DSD Enhancement products include DSD's Enhancement Control Panel. The **DSD Enhancement Control Panel** is accessed from the **Library Master Utilities** menu.

The DSD Enhancement Control Panel is a simple to use yet powerful system to help maintain DSD Enhancements installed on a Sage 100 system. To use it, select an Enhancement product from the list on the window and then click the button, on the right side of the window, which corresponds with the desired task.

**View Manual:** This button will display the product manual for the selected Enhancement using Adobe Acrobat. For this to be possible, the PDF file for the corresponding manual must be in the "MAS90/PDF" folder in the Sage

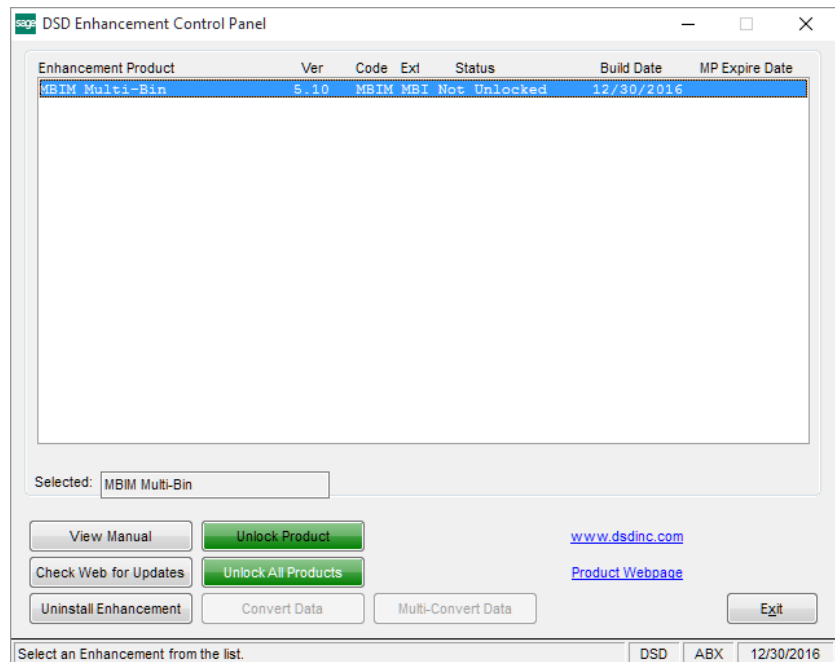
100 system. If the file is not present, and the system has web access, the correct PDF file will be automatically downloaded from the DSD website, put into the "MAS90/PDF" folder and then displayed.

**Check the Web for Updates:** This button will check the DSD website to see what the current build is the selected Enhancement and alert the user if a later version is available. *This requires an internet connection on the Sage 100 system.*

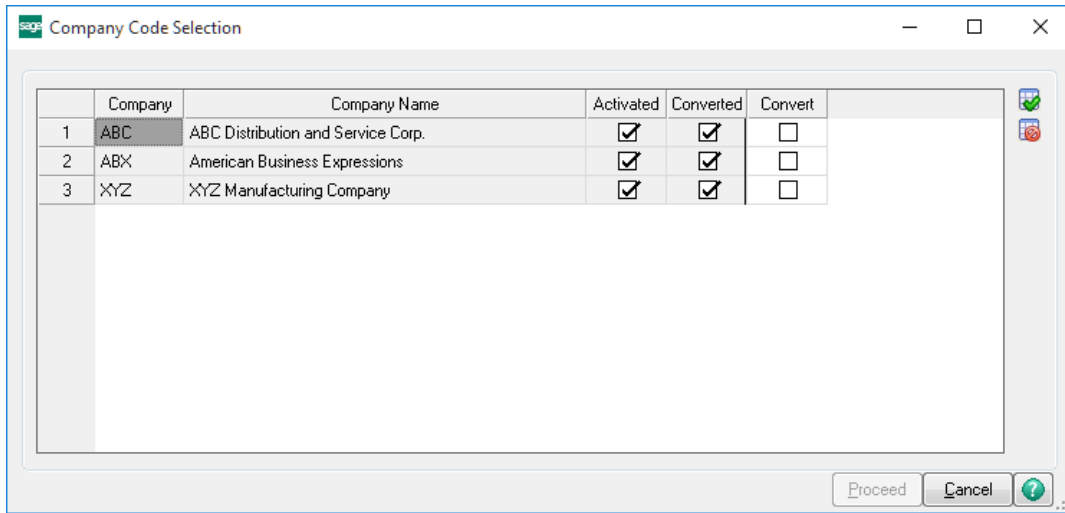
**Unlock Product:** This will cause the DSD Enhancement License Agreement and Activation window to appear. Using this window is described on the previous page. *This button is disabled if the selected Enhancement is already unlocked or if unlocking is not required.*

**Unlock All Products:** This will cause the DSD Enhancement All License Agreement and Activation window to appear. This window is similar to the one described on the previous page, but has only web and file as options to unlock. *This button is never disabled.*

**Convert Data:** After verification, the selected Enhancement's data conversion program will run. Data conversion is non-destructive, and may be triggered any number of times. Sometimes this is required to fix data records imported or updated from a non-enhancement installation.



**Multi-Convert Data:** Multiple Companies can be converted at the same time for a given Enhancement. *(If you have a large number of Companies to convert, please do in batches of 20 or fewer due to memory limitations.)*



**Help:** The Help button, located at the bottom right of the window, opens an HTML help file.

**Get Adobe Acrobat:** Opens the Adobe Acrobat website to the page where Acrobat can be downloaded and installed.

**Uninstall Enhancement** If this option is available, then selecting this button will start the un-install process, removing the enhancement from the system.

## Section C: Setup

### Initial Setup of DSD / ScanForce Multi-Bin Basic with Demo Data

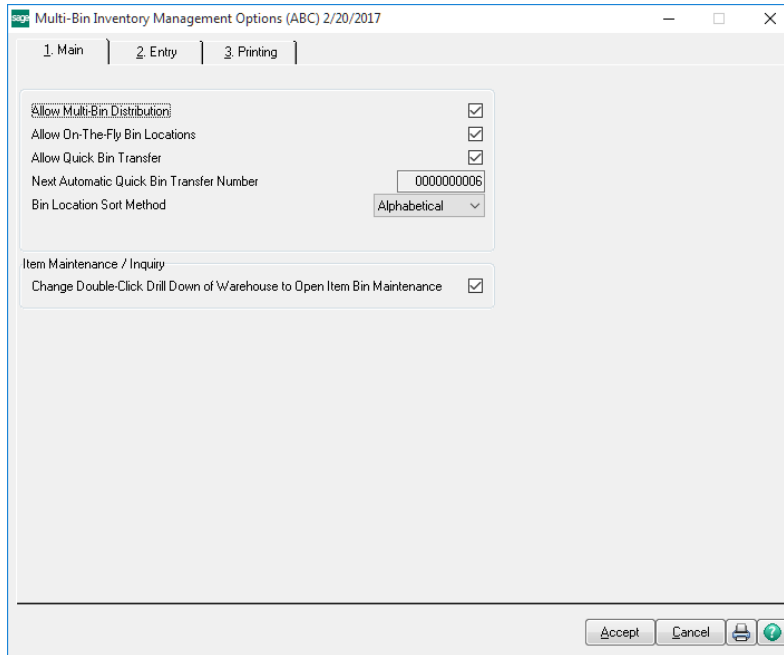
1. Install standard Sage 100 with ABC Demo Data. **Note:** If ABC Demo data is not installed you may still proceed as long as an ABC Company is Activated before installation.
2. Run Sage 100, to fully finish the standard installation procedure. Go to Library Master/ Security/ Product Registration. Make sure the Company Name and Registration ID are not blank as this is required for the DSD module registration, even in Demo mode.
3. 3. Download and install each of the DSD / ScanForce Multi-Bin modules and documentation that you wish to demo.
4. Download and install the MBBD executable and read the accompanying documentation.
5. Run Sage 100. You will see the installation of each enhancement module. Make sure to review all Role Maintenance options to ensure you have full security for the new module.

*Note: All Period End Processing is disabled in Demo mode registration.*

*Note: In order to use the Bill of Materials demo data contained in this installer, the Bill of Materials Module must be activated in company ABC prior to installation.*

### **Multi-Bin Options**

This is the starting point in setting up the DSD / ScanForce Multi-Bin Basic Module.



As you can see, ‘Allow Multi-Bin Distribution’ has been enabled for the company. Options can be enabled/disabled as desired. If you are using Multi-Bin Basic, options regarding Replenishment and Auto-Allocation will be disabled and cannot be changed unless you are using Multi-Bin Advanced. For more information on each other the options, please refer to the DSD / ScanForce Multi-Bin Basic User’s Manual.

### **Location Type Maintenance**

Location Type Maintenance has been setup with several samples of Location Types – “Overstock”, “Picking”, “Receiving”, “Shipping”, and “Showroom”. The “Overstock” and “Showroom” locations have no transaction restrictions, all others contain restrictions on various transaction types.

### **Warehouse Bin Maintenance**

Multi-Bin has been enabled for Warehouse Codes “000”, “001” and “002”. Warehouses “000” and “001” contain a bin structure, whereas Warehouse Code “002” does not. Allocations are disabled in Multi-Bin Basic.

### **Segment Code Maintenance**

Segment Codes have been defined for Warehouse Codes “000” and “001”.

### **Product Line Bin Maintenance**

No settings have been defined in the demo data for Product Line Bin Maintenance.

## Section D: System Operations

---

### **Bin Location Maintenance**

Many sample Bin Locations have been defined in the Demo Data, many of which have transaction, customer, or item based restrictions. Here are some examples:

*All Bins with "Picking Location" in the Bin Description field are all restricted from IM Receipts, PO Receipts, PO Returns, and PO Mat Req.*

*The Warehouse "000", "RECEIVING" bin location does not allow IM Issues, PO Returns, PO Mat Req, or SO/IM Sales/RMA.*

*Warehouse "000" Bin Location "A-100-00" is restricted to only customer "01-ABF".*

*Warehouse "001" Bin Location "A-100-10" is restricted to only product line "C&A".*

*Warehouse "000" Bin Location "SHIPPING", does not allow for PO Receipts and PO Returns.*

*"Showroom" bins "S-100-10" through "S-100-90" contain various item min max quantities.*

### **Data Entry Tasks**

The following data entry tasks within Sage 100 contain data for demoing the DSD / ScanForce Multi-Bin Basic Module:

- I/M Transaction Entry
- I/M Physical Count
- P/O Receipt Entry
- S/O Sales Order Entry
- S/O Invoice Data Entry
- B/M Production Entry

It is important to review this data, as well as the DSD / ScanForce Multi-Bin Basic User's Manual, prior to demoing the product.