

# **DSD Business Systems**

Sage 100 Enhancements

**LMML**

**Multi-Language**

Version 7.30



Information in this document is subject to change without notice.

Copyright 1993-2024, DSD Business Systems All rights reserved.

Multi-Language User's Manual  
Version 7.30

17 July, 2025

DSD Business Systems  
5120 Shoreham Place  
Suite 280  
San Diego, CA 92122  
858/550-5900 8:00am to 5:00pm PST  
858/550-4900 Fax

### Trademarks

**ProvideX®** is a Trademark of Sage Software.

**Windows** is a trademark of Microsoft Corporation.

**Sage 100®** is a registered trademark of Sage Software.

**PXPlus®** is a registered trademark of PVX Plus technologies

All other product names and brand names are service marks, and/or trademarks or registered trademarks of their respective companies.

This documentation and the software described herein, is prepared and published under license. Sage Software has not tested or verified either the software or any representation in this documentation regarding the software. Sage Software does not make any warranty with respect to either this documentation or the software described herein, and specifically disclaims any warranty, express or implied, with respect hereto, including the warranties of fitness for a particular purpose and merchantability.

Table of Contents

**SECTION A: INTRODUCTION 4**

    WEB RESOURCES.....4

    SUPPORT .....4

    FEATURES .....5

**SECTION B: GETTING STARTED 6**

    REQUIRED LEVELS.....6

    INSTALLATION.....6

    DSD ENHANCEMENT CONTROL PANEL.....8

**SECTION C: SET UP 10**

    MULTI-LANGUAGE MENU..... 10

    ENGLISH LANGUAGE BUILDER..... 11

    LANGUAGE MAINTENANCE ..... 11

    CRYSTAL REPORTS ..... 13

    CHANGING THE LANGUAGE TABLE ..... 13

    USER MAINTENANCE ..... 14

    MESSAGE MAINTENANCE ..... 14

    MISCELLANEOUS MAINTENANCE..... 15

    REPORT GENERATOR..... 15

**SECTION D: SYSTEMS OPERATIONS 16**

    AUTOMATIC TRANSLATIONS ..... 16

**SECTION E: UNINSTALL DSD ENHANCEMENTS 19**

**APPENDIX 22**

    TRANSLATION EXCEPTIONS.....22

## Section A: Introduction

---

This manual contains a description and instructions for this DSD product. Operating instructions are included for the features added by this product to Sage 100. For instructions on using Sage 100, refer to the appropriate Sage 100 manual, or call your Sage 100 reseller. DSD Business Systems offers excellent Sage 100 support, at an hourly rate.

### Web Resources

DSD web site: <http://www.dsdinc.com>

The Enhancement page contains:

- Current Release Schedule*
- Purchasing Information*
- Installation Instructions*
- Product Support*
- Enhancement Links*

LMML Multi-Language: <http://www.dsdinc.com/enh/pages/LMML.htm>

The product web page contains:

- Product Description*
- Web Links*
- Current Product Version Table*
- Product Installation File Download*
- Product Manual in Adobe Acrobat Format*
- Revision History*
- FAQ*

### Support

DSD provides product support through Sage 100 resellers. Support is provided for the current version. Older versions are supported at an hourly rate. DSD's telephone number is **858-550-5900**. Fax: **858-550-4900**.

For a hard error, where the program displays an error dialog, report:

- Error number.*
- Program name.*
- Line number.*
- Program version.*
- Exact sequence that caused the error, including menus and menu selections.*
- Other pertinent information.*

If leaving a message or faxing, please include:

- Your name.*
- Your phone number (and fax if applicable) and extension.*

It is possible to be unable to duplicate a problem, because of data corruption or because we have not exactly duplicated a particular operating environment. In such circumstances, we can only continue to try to fix the problem if we can either access the system with Symantec PCAnywhere or by some other means access or duplicate the system.

## Features

Multi-Language is a Sage 100 Enhancement, developed exclusively by DSD Business Systems. While Custom Office allows changes to Sage 100 screens one-field, one-panel-at-a-time, Multi-Language allows field names to be changed once—**globally!** Menus, Data entry screens, Crystal Reports, Standard Reports, Message Prompts, Progress Meters, and Pop-ups are all translated into a language better-suited to the culture of your company.

The Multi-Language English Language Table Builder Utility scans the entire Sage 100 ERP database searching for text embedded in Screens, Programs, Grids, ALE Lookups, Menus, Crystal and Standard Reports, Message Tables, Progress Meters and Pop-ups. Once created, the English Language Table serves as the basis upon which custom language translations will be made. Third-Party enhancements will be encompassed in the database search. It's necessary to run this utility only once after installation

Multi-Language User Maintenance allows entry of Sage 100 User Code assignments by Language Code. Each Sage 100 User Code can be assigned a unique Language Code linking it to a Language Translation Table by user preference.

Multi-Language Language Maintenance makes managing Language Translation Tables easy with the use of Sage 100 ERP's standard customizable grid entry format. Column A displays the English text, while Column B stores the maintainable translation. Editing tools such as a Find/Replace utility exist for making single word or bulk text translations across an entire Translation Table.

Language Translation Tables can be copied from existing Tables or from pre-defined Language Translation Templates available from DSD in various foreign languages.

Multi-Language is an invaluable Enhancement, providing a comprehensive solution to change screen fields only once—globally— instead of painstakingly one-field, one-panel-at-a-time.

**IMPORTANT: Multi-Language requires that the Crystal Run-Time Version 11 be installed:**

<https://www.dsdinc.com/enh/downloads/CrystalReports11RuntimeInstall.exe>

## Section B: Getting Started



- If you reinstall or upgrade one of the Sage 100 modules listed in the following table, you must also reinstall this Enhancement.
- Enhancements from different Master Developers are generally not designed to work together. If installed together, problems are likely to occur.
- Check with DSD before installing more than one Enhancement.

### Required Levels

Sage 100 Module	Module Required	Required Level
L/M	Y	7.30

### Installation

1. **Back-up:** Exit all Sage 100 sessions. Back-up existing Sage 100 data.
2. **Check Levels:** Sage 100 module levels **must match** those listed above.
3. **Run Enhancement Setup Program:** Save the executable installation program (sent to you or downloaded from our website) in a convenient location on the Sage 100 server. Launch the program from Windows Explorer or by selecting Start/Run, and then browse for the file in the location you saved it. Follow on-screen instructions.
4. **Send your Sage Serial Number to your DSD Representative:** Send your Sage Serial Number to your DSD representative in order for us to send you back the encrypted keys to unlock your system. This serial number can be found in Library Master\Setup\System Configuration, Tab 3. Registration as Serial Number.
5. **Re-Start Sage 100:** Sage 100 will be updated.
6. **Unlock the Enhancement:** DSD Enhancements must be unlocked to run. When any part of the Enhancement is run for the first time, the **DSD Enhancement License Agreement and Activation** window will appear. Follow the steps shown on that window. *You can click the Help button for more detailed instructions.*

**Note:** On the next page is a screenshot of the DSD Enhancement License Agreement and Activation window.

After accepting the License Agreement, you can then select the type of unlocking that you'd prefer. The choices are File, Web, Demo and Manual Entry.

**File Unlock:** After receiving your encrypted serial number key file from DSD, and placing that file in the MAS90/SOA directory, selecting this option will unlock all products keys contained in the file. This means you can unlock all enhancements at once using this option.

**Web Unlock:** If the system that is running the DSD Enhancement *has web access* and you have sent DSD your Sage Serial number, you can unlock the Enhancement without assistance using Web Unlock. When this option is selected, the program will attempt to download encrypted serial number key file from DSD *and then proceed to unlock all enhancements contained in the file.*

- The Sage 100 system that is being used must have web access for this option to be effective.
- You can send your Sage Serial Number to your DSD Enhancements sales representative.

**Demo Unlock:** If a Demo mode is available for the Enhancement you're running, you will be able to Demo unlock the product without assistance from DSD for demo purposes.

- *Creating a Demo Unlock is a good way to temporarily unlock DSD Enhancements off-hours, if you do not have web or email access. Later, you can unlock the product fully, during business hours.*

DSD Enhancement License Agreement and Activation

License Agreement

YOU MUST READ THIS AGREEMENT COMPLETELY AND AGREE BEFORE PROCEEDING. SCROLL THROUGH THIS AGREEMENT USING THE SLIDER CONTROL.

IMPORTANT: THIS SOFTWARE IS LICENSED BY DSD BUSINESS SYSTEMS, INC. TO CUSTOMERS FOR THEIR USE ONLY IN ACCORDANCE WITH THE TERMS SET FORTH IN THIS CUSTOMER LICENSE AGREEMENT. OPENING OR USING THIS PACKAGE CONSTITUTES ACCEPTANCE OF THESE TERMS. IF THE TERMS OF THIS LICENSE ARE NOT ACCEPTABLE, THE CUSTOMER MAY OBTAIN A FULL REFUND OF ANY MONEY PAID IF THIS UNUSED, UNOPENED PACKAGE IS RETURNED WITHIN TEN (10) DAYS TO THE DEALER FROM WHICH IT WAS ACQUIRED.

1 Agree to License Agreement  
☒ Agree ☐ Disagree

2 Select Unlocking Type  
☐ Web ☐ File  
☐ Demo ☒ Manual Entry

3 Call DSD at 858-550-5900  
Have this information ready: End User Name: DSD Business Systems  
Serial Number: 0555188

4 Enter the following from DSD  
Activation Key:   
Click to Unlock:

Help Exit

ABC 4/28/2010

**Manual Entry Unlock:** If you want to unlock a single enhancement using a single encrypted key, you can select this option and enter the 64 character key you receive from DSD by copy and paste.

**Note:** You can also unlock a DSD Enhancement through the **DSD Enhancement Control Panel** found on the Library Master Utilities Menu. Then, select the Enhancement with your mouse from the list of Enhancements and click the **Unlock Product** button on the right side of the window.

7. **Convert Data:** There is no Conversion for this Library Master Extended Solution.

## DSD Enhancement Control Panel

Starting with version 3.61, all DSD Enhancement products include DSD's Enhancement Control Panel. The **DSD Enhancement Control Panel** is accessed from the **Library Master Utilities** menu.

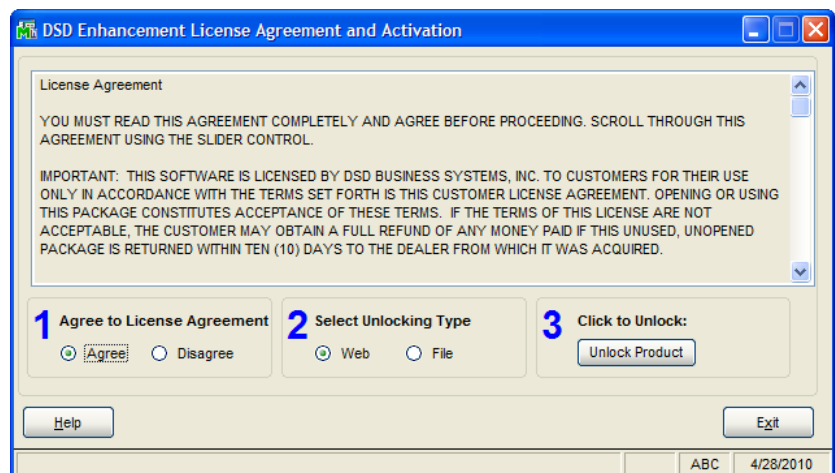
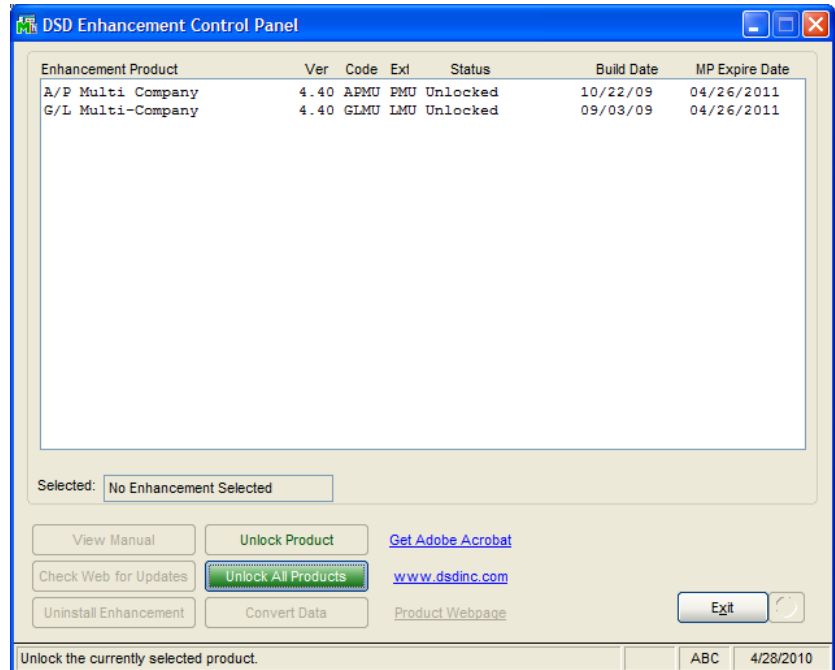
The DSD Enhancement Control Panel is a simple to use yet powerful system to help maintain DSD Enhancements installed on a Sage 100 system. To use it, select an Enhancement product from the list on the window and then click the button, on the right side of the window, which corresponds with the desired task.

**View Manual:** This button will display the product manual for the selected Enhancement using Adobe Acrobat. For this to be possible, the PDF file for the corresponding manual must be in the "MAS90/PDF" folder in the Sage 100 system. If the file is not present, and the system has web access, the correct PDF file will be automatically downloaded from the DSD website, put into the "MAS90/PDF" folder and then displayed.

**Check the Web for Updates:** This button will check the DSD website to see what the current build is the selected Enhancement and alert the user if a later version is available. *This requires an ftp web connection on the Sage 100 system.*

**Unlock Product:** This will cause the DSD Enhancement License Agreement and Activation window to appear. Using this window is described on the previous page. *This button is disabled if the selected Enhancement is already unlocked.*

**Unlock All Products:** This will cause the DSD Enhancement All License Agreement and Activation window to appear. This window is similar to the one described on the previous page, but has only web and file as options to unlock. *This button is never disabled.*





**Convert Data:** There is no conversion for this Library Master Extended Solution.

**Help:** The Help button, located at the bottom right of the window, opens an HTML help file .

**Get Adobe Acrobat:** Opens the Adobe Acrobat website to the page where Acrobat can be downloaded and installed.

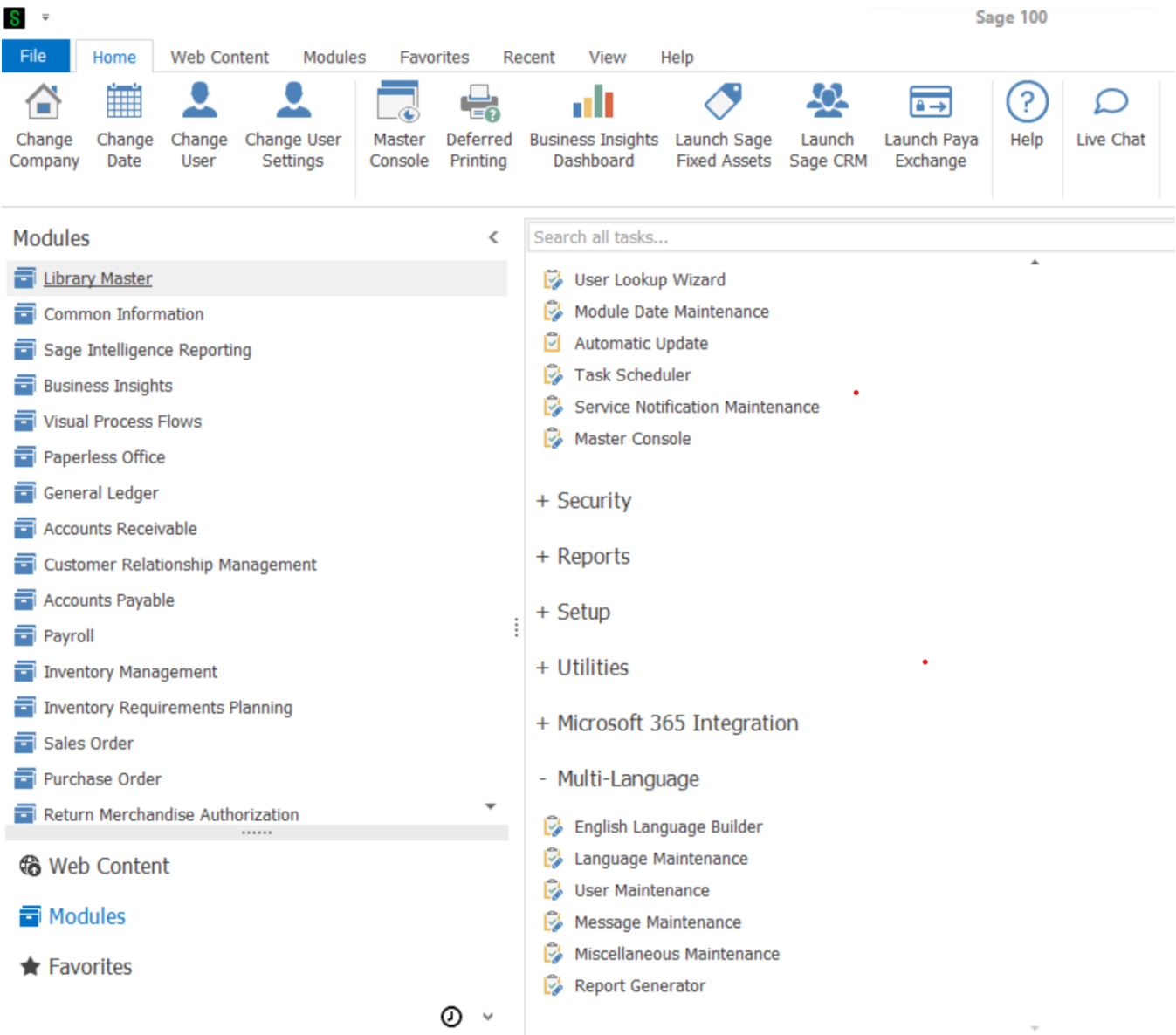
**Uninstall Enhancement** If this option is available, then selecting this button will start the un-install process, removing the enhancement from the system.

There are also links to the DSD website and the Enhancement page on that site.

# Section C: Set Up

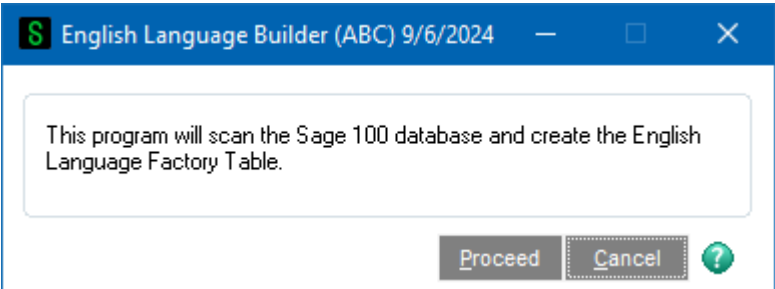
## Multi-Language Menu

After installation of the product, there will be a new menu item in the Library Master Module: **Multi-Language**, as seen at right.



English Language Builder

Select the **English Language Builder** menu item to create the English Language table that will be the basis for the foreign language substitutions.

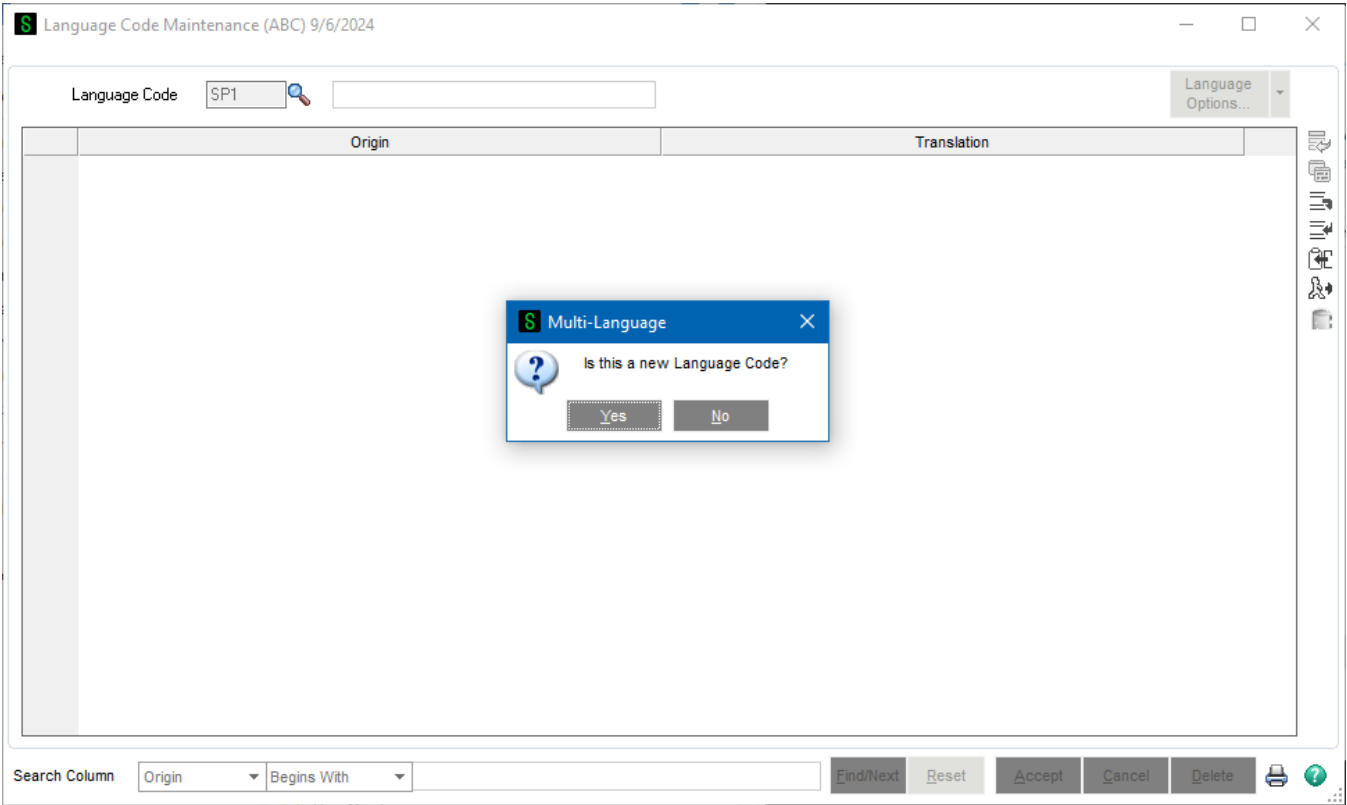


The user will be prompted with the warning above. The program will then search the Nomads Libraries, Grid Libraries, Message Library, ALE Lookup Files, Menus, Crystal Report Files, Legacy Reports, & Progress Bar Text, to create the English Language Table. This process may take a few minutes.

This will only need to be created once.

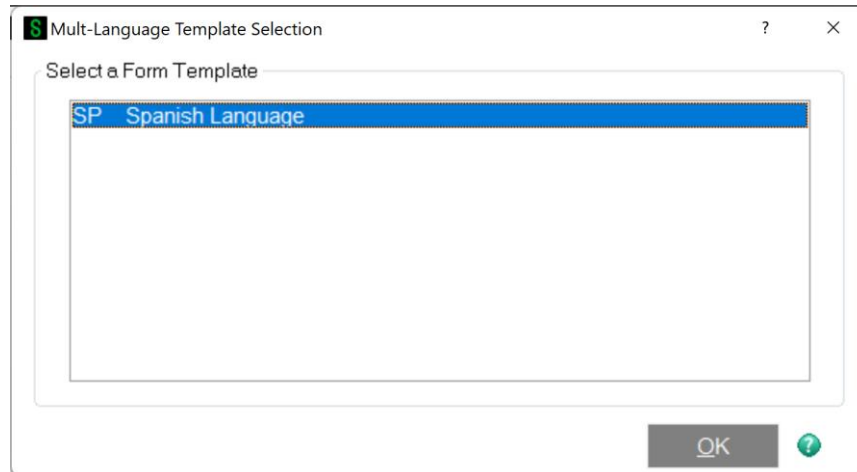
Language Maintenance

Select the Language Maintenance menu item to create/maintain a Language Table. Enter a new Language Code or use the Lookup to recall a Table that's already been created.

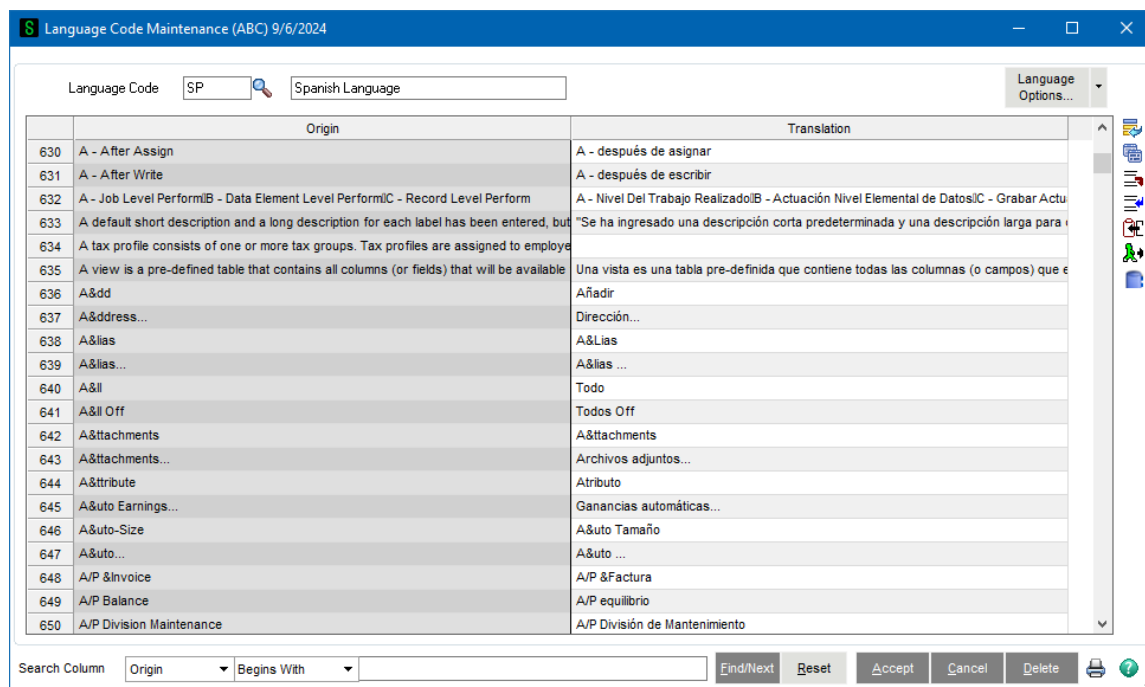


If a new Code has been entered, the “Origin” side of the Translation grid will be loaded from the English Language Table. The user will enter the Language Description then have the option to Copy the new table from a Template or one of the other Language Codes already created.

If “Copy From Template” is chosen, the user will be asked to select one of the templates on file (either a default template that comes with the product or one created by the user). The template records will then be copied into the new Language Code.



After the records have been copied, the new Table will be displayed with the original English text on the left from the English Language Table, and the new translated text on the right:



After the Accept Button is selected the system will update the records permanently to the table.

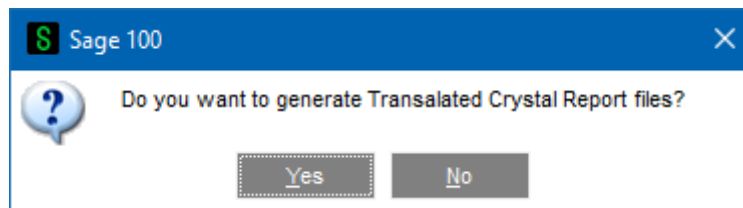
If the user has chosen the “Copy From” button to create a new table, the system will allow the choice of any current table.

Once a Language Table has been established, the user can also use the “Create Template” button to make the new table a template.

## Crystal Reports

Starting with Sage 100 version 2013 (5.00), due to a change with the way Crystal Reports are handled, Multi-Language has been changed to give the user the ability to generate Translated Crystal Reports 1) at the creation of a new Language table, 2) after changes to an established Language table, 3) as well as on demand from the Multi-Language menu item.

After the Language Table has been completed or changed, the user will be asked the following:

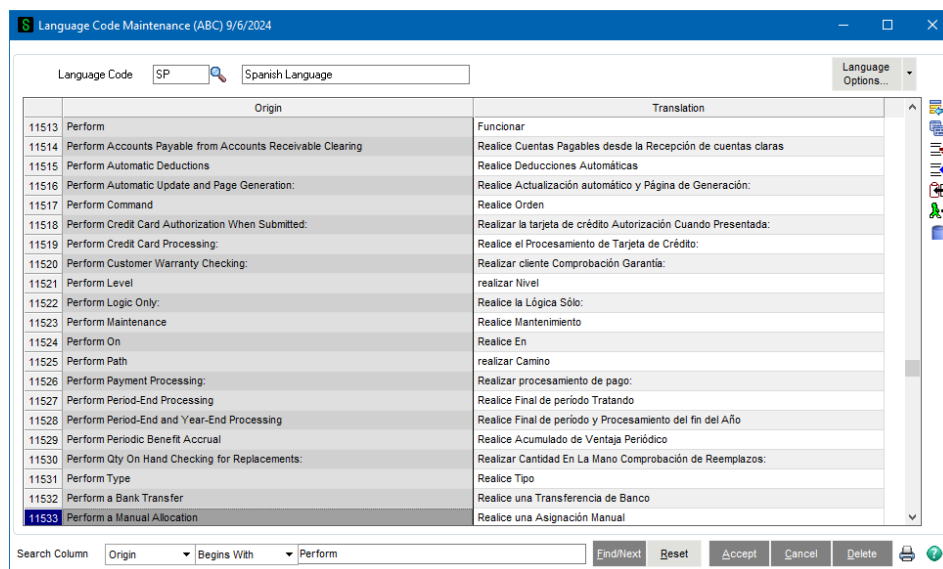


This message will appear as the reports are generated indicating the percentage of completion. Note, this may take a couple of minutes.

## Changing the Language Table

All text on the Translation side Language Table grid can be maintained.

There is a Find/Next search feature at the bottom of the table that can be used to search for specific words on the Origin or Translation side of the grid. The user can then easily change the desired text.

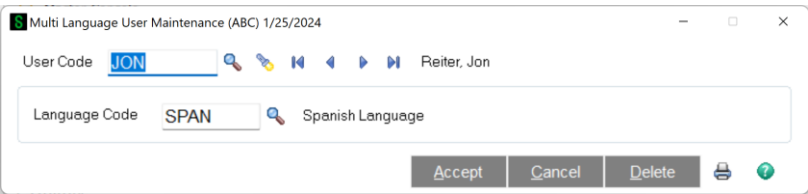


The buttons on the right side of the panel can also be used to Delete a Row, Copy Origin Text to the Translation side of the grid, Add to the filter file, Remove from the filter file, Execute a global Find/Replace of Text, Select only records without translations, and Export Records to a temporary text file.

User Maintenance

Each User Code can be assigned a different Language Code; if nothing is assigned, the user will continue to see everything in Standard Sage 100 English. To assign a Language Code to a user, choose the User Maintenance menu item.

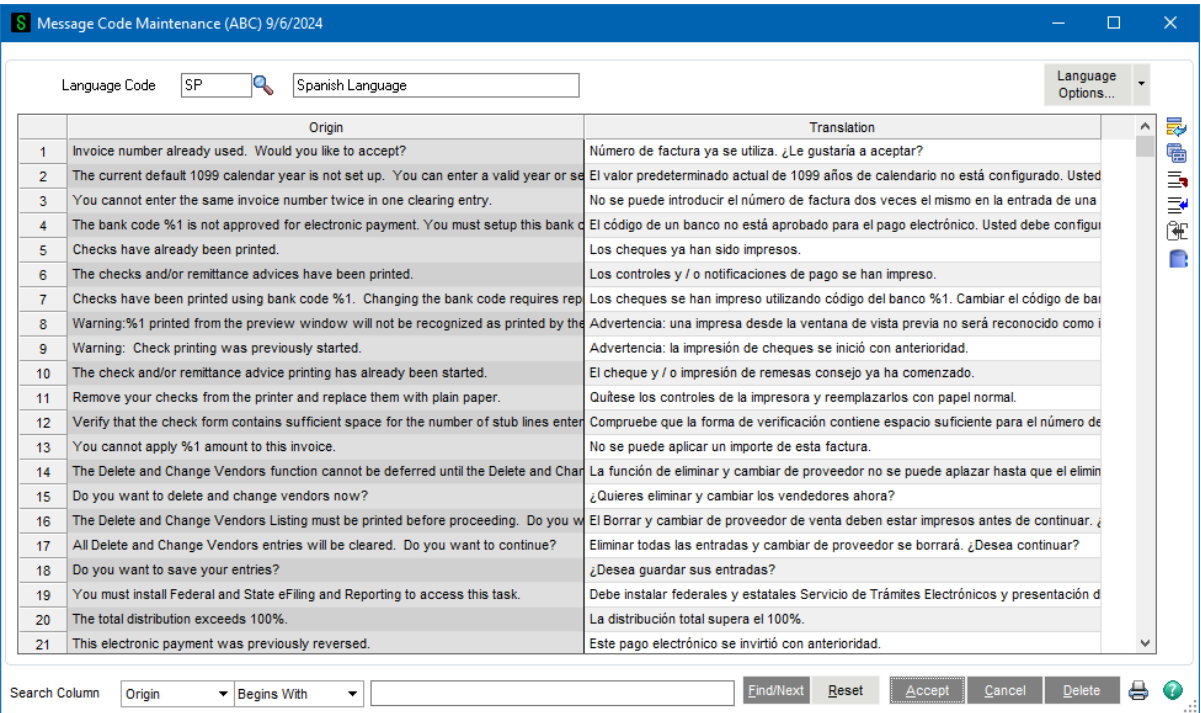
Enter the User Code and then assigned the Language Code for that user.



Once the entry is accepted and the User Code has been changed in Sage 100, the user will see the language changes take effect.

Message Maintenance

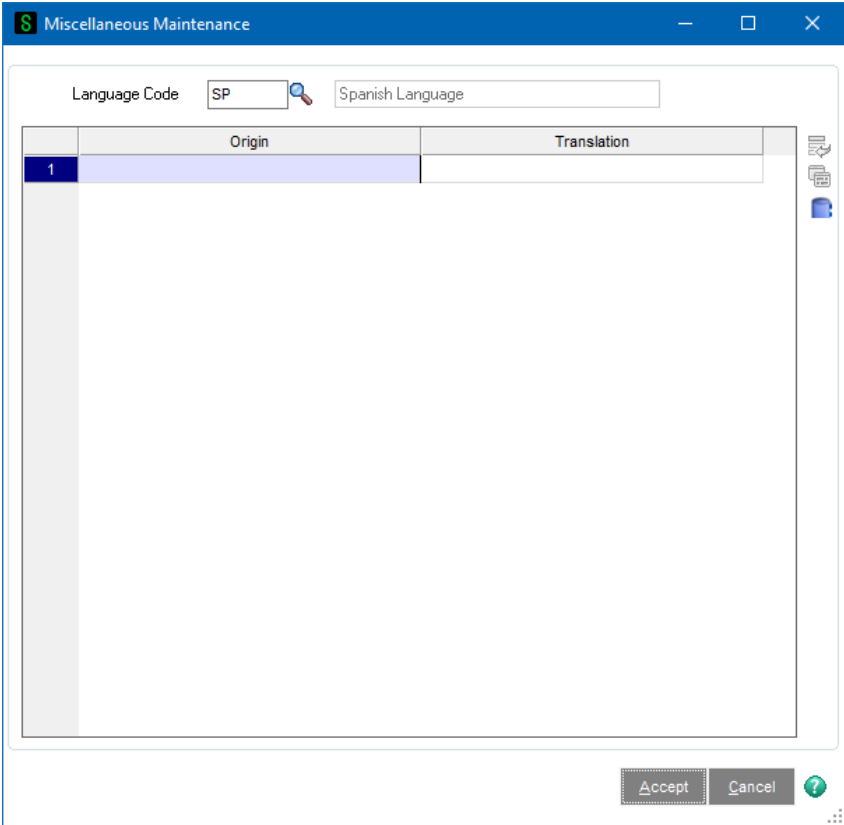
Larger text messages have been kept separate from the main Language Code translations and can be maintained through Message Maintenance.



As in Language Maintenance, various buttons exist on the right side of the grid to aid in maintaining language translations - the user can use a Find/Replace Search function, Add/Delete rows in the grid, and replace a translation with the text from the Origin column if needed.

**Miscellaneous Maintenance**

If the user needs to add text not found by the English Language Builder, it must be added through this menu option.



Enter or select the desired Language Code, and then add the English text to the Origin side of the grid, and the translated text to the Translation side.

After the entries are accepted, they will be added to and appear on the appropriate Language table.

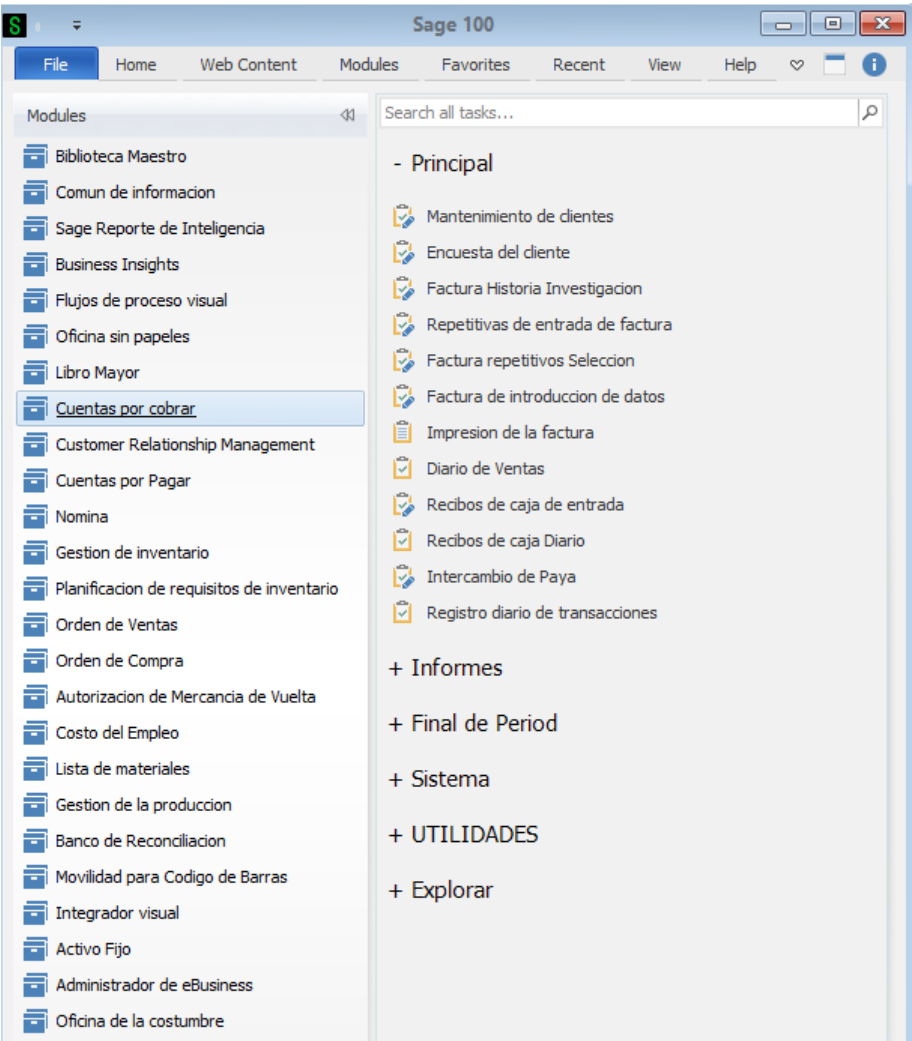
**Report Generator**

This menu option allows the user the ability to generate Translated Crystal Reports on demand for a specified Language Code.

# Section D: Systems Operations

## Automatic Translations

Once the User has been assigned a Language Code, the Sage 100 menus, screens and reports will translate automatically to the new language:





Mantenimiento de clientes (ABC) 7/1/2025

No cliente01-ABF

NombreAmerican Business Futures

Copiar A

Reenumerar

Más

1. Principal2. Adicional3. Estadísticas4. Resumen5. Historia6. Facturas7. Transacciones8. S/Os

FACTURA No:	Tipo de factura	Fecha inv	Fecha de Ven...	Fecha de d...	Cantidad	Descuento	Saldo	PO No. cliente	Comenta
0000191	Invoice	5/31/2025	6/30/2025		2,416.25	0.00	0.00		Monthly
0100041	Invoice	5/31/2025	6/30/2025		38.20	0.00	38.20	789	
0100048	Invoice	5/30/2025	6/29/2025		130.00	0.00	130.00	789	
0000169	Invoice	5/29/2025	6/28/2025		2,416.25	0.00	0.00		Monthly
0100011	Invoice	5/28/2025	6/27/2025		265.86	0.00	0.00		
0100012	Invoice	5/28/2025	6/27/2025		666.53	0.00	0.00		RUSH
0100009	Invoice	5/23/2025	6/22/2025		2,032.54	0.00	0.00		RUSH
0100042	Invoice	5/21/2025	6/20/2025		864.25	0.00	0.00		Ship san
0100033	Invoice	5/15/2025	6/14/2025		1,113.05	0.00	613.05	XX-R90200	

Fecha Trans...	Tipo Transmis	Cantidad trans	Fecha de Pa...	No de cheque	Pago Referido	Tarjeta d...	RMA No
----------------	---------------	----------------	----------------	--------------	---------------	--------------	--------

Saldo	Actual	30 Days	60 Days	90 Days	120 Days
6,297.36	3,817.38	1,222.58	1,257.40	0.00	0.00

Aceptar

Cancelar

Borrar

Tema Mantenimiento (ABC) 9/6/2024

"Código del o1001-HON-H252

"DescripciónHON 2 Drawer Letter File w/o Lk

Copiar y de

Reenumerar

Más

1. Principal2. Adicional3. Cantidad4. Historia5. Transacciones6. Órdenes7. Detalle de coste

Línea deWF&A WORKSTATION FURN & ACCESS

Tipo de producBuen acabado

ValoraciónFIFO

ConsecuciónComprar

Peso35

Volumen0.0000

Inventario del CiB

Unidad de Medida

ESTÁNDAEACH

ComprasEACH

VentasEACH

No. De EACH1

No. De EACH1

Código deSTD

Por defecto000

STANDARD QUANTITY PRICIN

CENTRAL WAREHOUSE

Vendedor

Código de

01-CONT

30 DAY

Container Corporation Of Usa

30 days from shipment

Ventas

Precio al por84.000

Precio corrient84.000

Última ven5/31/2025

Compras

Costo medio32.750

Costo promedio34.250

Último recibo5/1/2025

Última Costas

Articul34.250

Asignados.000

Total34.250

Cantidades

Whse	"Descripción	A Mano	En PO	En TAN	En Ord Bk	Compromet...	Disponib	En Envío	En
000	CENTRAL ...	2,677.00	12.22	.00	.00	.00	2,677.00	.00	
001	EAST WAR...	988.00	.00	3.00	.00	3.00	985.00	.00	
002	WEST WA...	1,519.00	.00	12.00	10.00	22.00	1,497.00	.00	
098	SCRAP WA...	1.00	.00	.00	.00	.00	1.00	.00	

Aceptar

Cancelar

Borrar

Tema Listado de inventario (ABC) 9/6/2024

Configuración infor

STANDARD

Guardar

"Descripción

Inventory Item Listing

Ajuste de Opciones

"Escribe" Pública

☐ Imprima Ajustes de Informe

Número de Copias 1

Informe por

☒

Tres perforaciones de

☐

Recogidos

☒

Ordenar Informe

"Código del objeto"

Tipo de informe para

Código del artículo y de venta Descrip

Valoraciones para imprimir

Todas las ☒ Costo ☒ Costo medio ☒ LIFO ☒ FIFO ☒ Lote ☒ Serie ☒

Tipos de Producto para Imprimir

Todos los ☒ Los productos ☒ Materias ☒ Suspendido ☒ Kits ☒ Imprimir artículos ☒

Tipos de Consecución para Imprimir

Todos los ☒ Marca ☒ Compra ☒ Subcontrato ☒ Artículos de Internet habilitado

Imprimir Artículos Sólo

☐

Información adicional para Imprimir

Descripción ampliada

☐

Precio del

☐

Notas de

☐

Internet Detalle del

☐

Precio y detalles Costo

☐

Los

☐

Suplente

☐

Detalle de Internet

☐

Bin Loc./Detalle

☐

Caducidad de lote/serie

☐

Selecciones

Seleccionar campo	Operand	Valor
"Código del objeto	Todo	
Línea de productos	Todo	
Número de proveedores pri	Todo	

PDF995

Mantenga las ventanas ab

Imprimir

Vista

Previo

Configuració

Accounts Receivable Trial Balance

Main Report

Accounts Receivable Trial Balance

Todas las facturas de1/25/2026

ABC Distribution and Service Corp. (ABC)

División de número:01 EAST SALES OFFICE

Cliente/Número de Factura	Factura Fecha	Fecha de vencimien	Fecha descuento	Importe factur	Importe de desc	Saldo de factur	Fecha Transmis	Cantidad trans	Fecha de depósito
ABP American Business Futures									
0000122-IN	1/31/2025	3/30/2025		850.00	0.00	850.00 INV	2/28/2025	850.00	
							Número/tipo de cheque		
0000141-IN	3/31/2025	4/30/2025		1,226.25	0.00	1,178.69 INV	3/31/2025	1,226.25	
							Número/tipo de cheque		
							C/M 5/31/2025	47.56	
0000190-IN	4/30/2025	5/30/2025		85.00	0.00	85.00 INV	4/30/2025	85.00	
							Número/tipo de cheque		
0100033-IN	5/15/2025	6/14/2025		1,113.05	0.00	613.05 INV	5/31/2025	1,113.05	
							Número/tipo de cheque		
							Page 5/31/2025	500.00-5/15/2025	
0100034-IN	5/15/2025	6/14/2025		2,467.61	0.00	2,467.61 INV	5/31/2025	2,467.61	
							Número/tipo de cheque		
0100041-IN	5/31/2025	6/30/2025		38.20	0.00	38.20 INV	5/31/2025	38.20	
							Número/tipo de cheque		
0100048-IN	5/30/2025	6/29/2025		130.00	0.00	130.00 INV	5/30/2025	130.00	
							Número/tipo de cheque		

Current Page No.: 1

Total Page No.: 1+

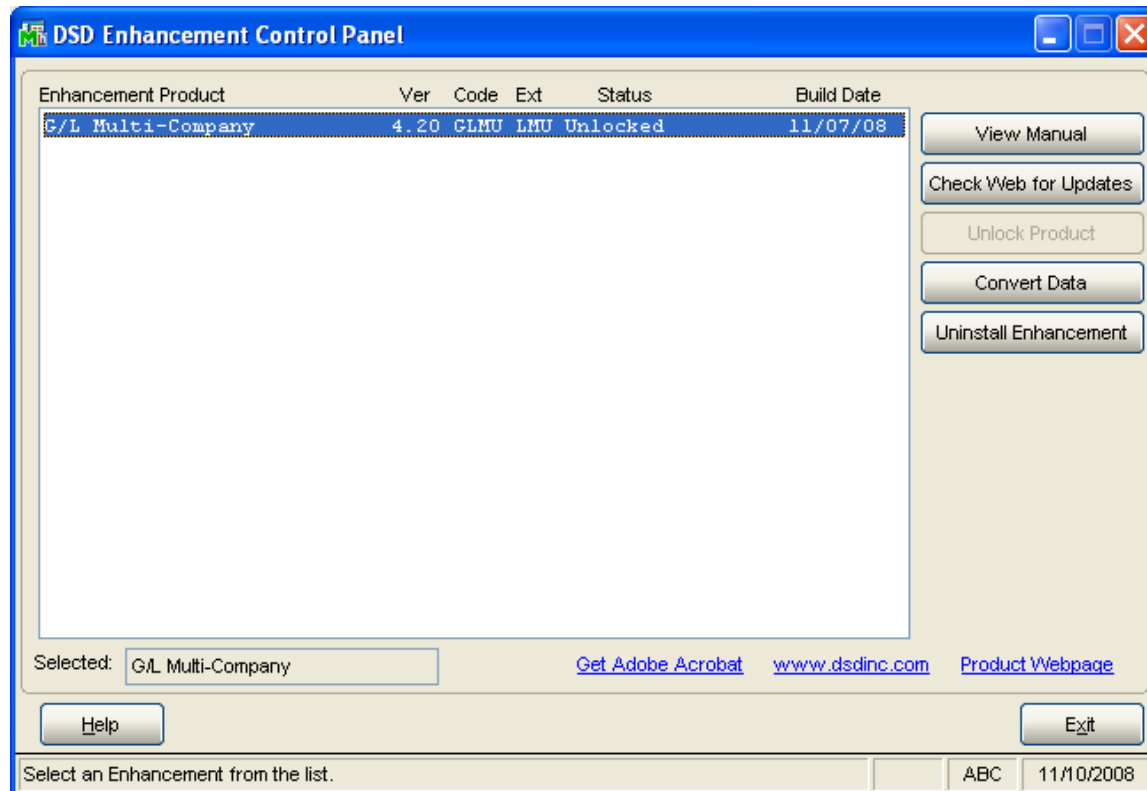
Zoom Factor: 100%

Copyright © 1993-2024 DSD BUSINESS SYSTEMS

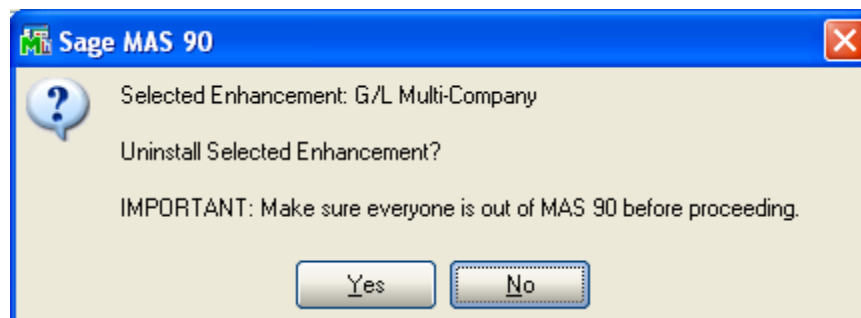
User's Manual

## Section E: Uninstall DSD Enhancements

A DSD Enhancements Uninstall Utility has been provided for the purposes of removing DSD Enhancements from your Sage 100 System. This utility may be accessed from the **DSD Enhancement Control Panel** menu option on the **Library Master / Utilities** menu.

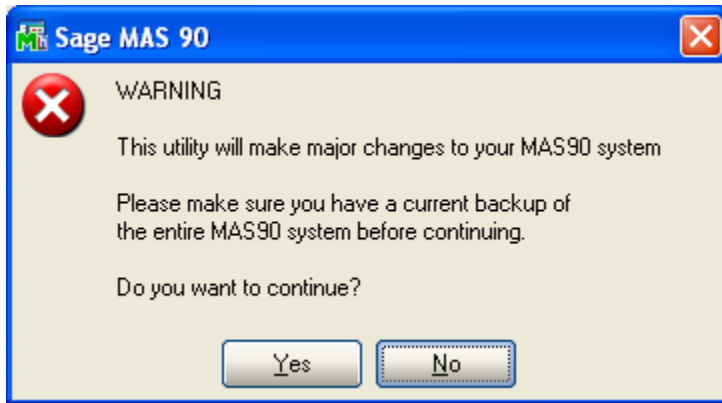


When accessing the **DSD Utility Suite**, select the enhancement that you wish to Uninstall, and then select the **Uninstall Enhancement** button. The following message box will appear:



Select **No** to exit the Uninstall Process.  
Select **Yes** to continue with the Uninstall Process.

The following message box will appear, to remind you that a complete backup of your entire Sage 100 system should be completed prior to uninstalling a DSD product.

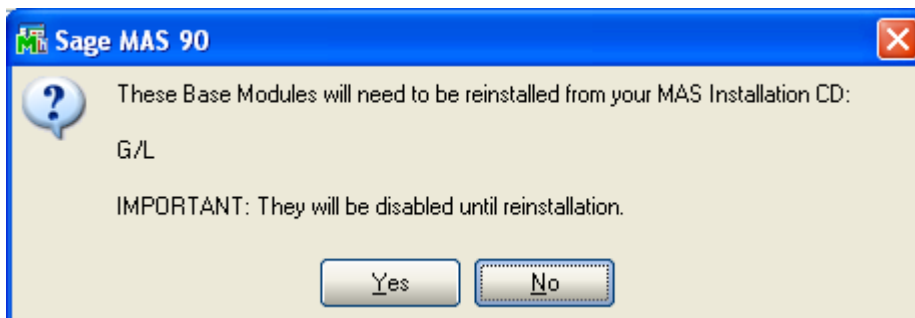


Select **No** to exit the Uninstall Process.

Select **Yes** to continue with the Uninstall Process.

After the Uninstall of the DSD Enhancement, you **MUST** reinstall certain standard Sage 100 modules, followed by reinstallation of Sage 100 Service Packs / Updates, if applicable.

The following message box will appear, and will display which of those specific Sage 100 modules you must reinstall afterwards.



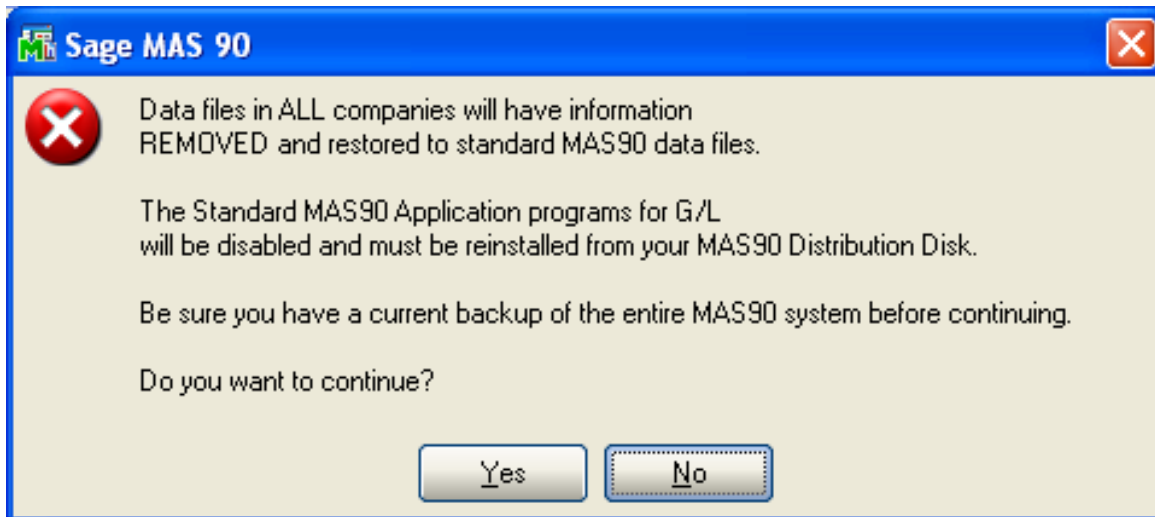
Select **No** to exit the Uninstall Process.

Select **Yes** to continue with the Uninstall Process.

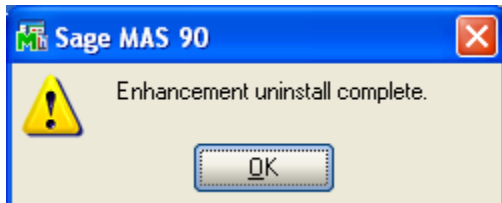
The following message box will appear, displaying the final warning message.

Select **No** to exit the Uninstall Process.

Select **Yes** to continue with the Uninstall Process. At this point, the DSD Enhancement will be removed from the Sage 100 system.



After completion of the Uninstall, the following message box will appear. Select OK to continue.



Now that the Uninstall process is completed, you must:

- Reinstall the applicable standard Sage 100 modules
- Reinstall the latest Sage 100 Service Pack/Updates, if applicable.
- Reinstall any other DSD Enhancements or Developer products that are affected from the reinstallation of the standard Sage 100 module(s).

## Appendix

---

### *Translation Exceptions*

The following are translation exceptions due to the problems encountered trying to translate non-business framework code.

#### All modules:

Reports, Registers, Listings –

Generally, Sort drop down on Report Selection main panel for “Department/Location”, on Select Tab, some Report Descriptions on printer selection panel, Printer Selection panel, Printing records panel.

Posting Period panel (“GL Posting Date is:”, Notice: This date...”)

Preview Panel of reports title “View (English name)...

#### Library Master

##### **Main**

1. User Lookup Wizard in English
2. Module Date Maint – module names for report only
3. Auto Update File report itself in English

##### **Reports**

1. In general, on selection panels, operands are translated, module names/answers are not.
2. Activity Log printing for English, “no data selected” for Spanish

##### **Setup**

1. Device Configuration - Device Type drop box
2. Report Manager heading message & “Tree” module names
3. Report Format/Maintenance

##### **Utilities**

1. DFDM warning message & listing
2. Rebuild Sort Files – warning message
3. Rebuild Key Files – warning message
4. Analyze/Relink Files – warning message
5. Reinitialize Data Files – warning message

#### Common

##### **Main**

Memo Maintenance/Listing

Module drop box

Note Type drop box

Grid Task descriptions on lines

#### Bank Reconciliation

**Main** – Reports from DE - “Bank Code” “Deposits And Adjustments” in heading

### General Ledger

#### **Main**

1. Account Maint/Inq
  - Budget button Grid Titles
  - History Tab - Month Names
  - Variance Tab – All grid column titles, month names, (except some Budget ones that can be changed in Setup)
2. Allocation Entry - Listing – Type drop box
3. Recurring Journal Entry
  - “This Journal is out of balance..”, “Do you want to update the...?”

#### **GL Reports**

1. Financials
  - Report Selection – Report Group drop box, Grid info
  - Report names in heading and disclaimer in footer, column titles for Income Stmt
2. GL Budget & History “Actual Postings” desc (Budget desc ok thru Setup)
3. GL Budget & History by Period “Actual Postings” & “Beginning Balance” on detail lines

#### **Budget**

1. Budget Maint –
  - Year Budget column
2. Budget Revision Entry / Auto Budget Copy
  - Revision Method drop box bottom two choices

#### **Period End**

1. Period End Report Selection
  - Panel title
  - Period End Listing - Report Title & Report Names
2. Period End Processing
  - Period End message before processing

#### **Setup**

1. Options – Tab Titles
  - Entry tab – Batch grid Desc
  - Budget – Budget Code grid Desc
  - Terminology Tab – Account Group grid Default (translated in listing)
2. Account Structure Maint - Account Separators drop down boxes
3. Account Group Maint
  - Category drop box
  - Account Type drop box
  - Cash Flow Type drop box
  - Account Group Listing, only Group Desc not translated
4. Main Account Maint
  - Copy button - Operands drop box

Apply button – Field & Value fields

5. Sub-Account Maint

Segment drop for Department, Location

Copy button Operands drop box

Apply button Field & Value fields

6. Fiscal Year Maintenance – “Do you want to re-calculate” message

7. Memo Manager Maintenance

Memo Type drop box

Grid Task descriptions

Grid Memo Options drop box

**Utilities**

1. Delete Accounts Operands drop box

2. Change Accounts – Change Type drop box

3. Generate Accounts Operands drop box

**PR Services**

1. PR Services GL Account Selection - Tab titles, message “The Offset Account key is req”

**Accounts Payable**

**Main**

1. Vendor Maintenance/Inq

Add'l tab – 1099 History Button box descriptions

Statistics tab – aging desc “Days”

History tab – month names

PO tab –drill down on PO, 2<sup>nd</sup> line of titles on “Lines” tab

2. Invoice Data Entry

Header tab – “Invoice Amount”, “Discount Amount”

**Check Processing**

1. Check Printing

Stub/Extended Stub Selection Operands drop box, still some “stub”s

Spelled out check amount

**AP Reports**

1. Generally:

Selection tab operands

In English, option to print by State and Zip prints the State & zip. In Spanish, it appears to be printing the correct order, but no State/Zip sub-heading prints.

2. AP Aged Invoice Report – Aging Options, “Actual” “Days” in header

3. Open Invoice by Job – Cost types to print, Invoice selection “Open Invoice”, “Paid Invoice”, “All Invoices” on header

4. Accounts Payable Analysis Report – Message in header “100.0 % of AP is over XX Days old....” parts are in Spanish. Crystal formulas building ELF table.



**Period End**

## 1. Period End Processing

“Accounts Payable Period End Processing will be performed for the period ## ending mm/dd/yyyy.”

“Period end reports have not been printed. Do you want to complete period end processing?”

**Setup**

## 1. Options – Main tab “Days”

Entry tab/Batches “Invoice Data Entry”, “Manual Check Entry”,

Listing – “Days” & two lines of options

## 2. Terms Code Listing - “Yes”/”No” for checkboxes

## 3. AP Memo Manager Maint - Memo Type drop box, Task descriptions in grid, Memo Options drop box in grid, Listing Task desc

**Utilities**

## 1. Remove 0 Balance Invoices – Panel message

## 2. Purge 1099 History – Panel retaining message

## 3. Purge Sales Tax History – Operands drop box

**Accounts Receivable****Main**

## 1. Customer Maint/Inq

Statistics tab – “Actual”, “Days”

History tab – Month Names

Invoices tab – “Actual”, “Days”

## 2. Invoice History Inq

Header – “E-mail” “Fax” “Check No”

## 3. Repetitive Invoice Selection Batch entry grid lines descriptions

## 4. Invoice DE “A/R Invoice Data Entry Batch” Batch entry grid lines descriptions

## 5. Invoice Printing “Print A/R Invoice Data Entry Batch” “Not all Invoices have been printed”

## 6. AR Sales Journal “Do you want to print the AR Sales Journal” “Processing Sales Journal”

## 7. Cash Receipts DE

“A/R Cash Receipts Data Entry Batch”

Batch entry grid lines descriptions

Header “Cash Amount Remaining”, “Credit Card Amount Remaining”, “Deposit Remaining”

Lines – New invoice line type drop box

**AR Reports**

## 1. Generally: In English, option to print by State and Zip prints the State &amp; zip. In Spanish, it appears to be printing the correct order, but no State/Zip sub-heading prints.

## 2. Customer Listing – “Permanent Customers Only”

## 3. AR Aged Invoice Report - Invoice Aging option drop box, “Transaction Payment History” message,

“Actual”, “Days” in report heading

## 4. AR Analysis – “Now Summarizing...” message

## 5. AR Analysis Report - Message in header ½ English

### Period End

1. F/C Data Entry - “Actual”, “Over ## Days”
2. Match Credits - Selection operands
3. Period End Processing - “Accounts Receivable Period End Processing will be performed for the period ## ending mm/dd/yyyy.” “Period end reports have not been printed. Do you want to complete period end processing?”

### Setup

1. Salesperson Maintenance - print options drop box for Salesperson Listing
2. Memo Manager Maint - Memo Type drop box and Task desc & memo options drop box on grid lines

### Utilities

1. Delete/Change customer - “Processing..” messages
2. Global Custom Field Change - Selection operands
3. Remove Zero Balance Inv - “Remove Invoices with Zero Balances Paid on or Before....”
4. Salesperson Commission Purge - Selection operands
5. Purge Sales Tax History - Selection operands
6. Internet Cust Enable/Purge - Selection operands

## Inventory

### Main

1. Inventory Maint/Inq
  - Main tab - History button - Month names, Sales History button “Warehouse Code” “Customer No.”, Receipts History button “Warehouse Code” “Vendor No”  
Alias button - Listing in English  
Inq only - Pricing button- method & Sales Info button - Sale Type print in English
  - Option tab - Commission Method drop box
  - Order tab - “Ordered” “Received” “Back Ordered” total descriptions  
Purchase Order drill down - Lines tab “Requested” “Issued” “Balance”  
“Ordered” “Received” “Back Order”, Totals tab “Last Issue No.” “Last Issue Date”  
“Last Receipt No.”, “Last Receipt Date”  
Sales Order drill down - Header tab “PO client” “Last Invoice Date” “Last Invoice No.” “Ship Date” “E-mail” “Fax No.” “Split Com.”, Totals tab “Credit Card Number”  
“Check Number” “Reference Number” “Deposit Amount”
  - Cost tab - “No cost detail is available for AVERAGE COST items.”
2. Transaction Entry
  - Transaction Type drop box
  - Header - Sales “Default Warehouse”  
Transfers - “Transfer From Warehouse” “Transfer To Warehouse”
  - Lines - “Unit Cost” , “Unit Price” , “Lot No.”, Lot/Serial Entry “Lot Number”
3. Transaction Register - Type + “Register” in heading
4. Sales Promotion Maint - “Discount Percent”

**Kits**

1. Sales Kit Listing – “Component”
2. Costed Sales Kit – “Component” in heading

**Reports**

1. Inventory Item Listing – “Backorders” “Recpt Hist” “Base” “No of Each” “Landed Cost” “Size” “Min Ord Qty”
2. Inventory Sales History – History Option drop box “Customer Detail”, Heading – month names, Line descriptions “QTY SOLD:” “\$ SOLD:” “PROFIT %:” “COG SOLD:” “QTY RTRN:”
3. Inventory Issue History – Heading – month names, Line descriptions “QTY ISSUED:” “QTY TRANSF:” “QTY ADJUST:”
4. Receipts History – Report Heading month names, Report Line desc “QTY RECV:” “COG RECV:” “QTY PROD:” “QTY RTRN:”

**Period End**

1. Messages for PE Processing, Zero Cost tier removal, Transaction Detail removal, Detail History removal in English.

**Setup**

1. Options – Main tab - G/L Segment for Warehouse posting drop box, Listing ½ English, ½ Spanish
2. U/M Conversion Maint - Listing is in English
3. Product Line Maint - Listing heading in SP, detail in English

**Sales Orders****Main**

1. Sales Order DE –  
 Lines Tab – “Discountable”, “Commissionable”, “Subj to Exemption” on secondary grid not being found for template.  
 Totals tab Payment Type drop box, “Credit Card Number”, “Check Number” “Reference Number” “Deposit Amount”
2. Invoice DE –  
 Batch Entry grid lines in English,  
 Lines tab– “Discountable”, “Commissionable”, “Subj to Exemption” on secondary grid not being found for template  
 Totals tab “Credit Card Number”, “Check Number” “Reference Number” “Deposit Amount”

**Shipping**

1. Packing List – “Do you want to print Additional Packing List”
2. Invoice Printing – “Do you want to print Invoices”

**Inquiries**

1. Customer, Invoice History, Inventory inquiries see above.
2. SO Inq –  
 Header tab “Last Order Date” “Last Order No.” “Expire Date”  
 Totals tab “Credit Card Number” “Check Number” “Reference Number” “Deposit Amount”

## Reports

1. SO Report descriptions are in English and can be changed by the user.
2. Recap by Whse/Prod Line- Most of heading in English and aligned incorrectly, Recap by Product Line, Recap by Whse, Recap by Div just aligned incorrectly..

## Period End

1. Report Selection - "Customer Sales History by Item", report config "STANDARD", Listing report names in English
2. Period end Processing - "SO Period End Processing will be performed for the period ## ending mm/dd/yyyy" "Warning: Period end reports have not been printed. Do you want to complete...."

## Setup

1. Options -
  - Main tab - "Current Calendar Year"
  - Entry tab - Batch grid "Invoice Data Entry"
2. Customer Last Purchase - Rebuild button "Do you want to rebuild from Orders/History/"; Clear button operands drop box
3. Memo Manager - Memo Type drop box and Task desc & memo options drop box on grid lines

## Utilities

1. Purge Expired Orders/Quotes - "master/repeating orders and price quotes on or before " in clearing question
2. Purge Obsolete Sales Orders - "standard orders and backorders on or before " in clearing question.
3. Purge Order/Quote history - "order /quote history on or before" in clearing question
4. Purge Sales History - In English "SO Options indicates that your system is not retaining sales History for more than 2 years" In Spanish "% %1 indica que 2."
5. Purge SO Recap - "orders in the sales order recap file on or before" in clearing question.

## Purchase Orders

### Main

1. Automatic Reorder Register "No items in this range to select"
2. Purchase Order Entry -
  - Header tab- PO Type drop box, "Master/Repeat PO", "Date Required" "Expire Date" "Fax"
  - Lines tab - "Ordered" "Received" "Back Order" "Issued" "Requested" "Balance" , Help messages in English,
  - Totals tab - "Last PO No." "Last PO Date" "Last Receipt No." "Last Receipt Date" "Last Issue No." "Last Issue Date"
3. Purchase Order Printing - Order type , "ORIG" "ORDERED" "RECEIVED" "BCK ORDER" "REQUESTED" "ISSUED" "BALANCE" in Detail Line headings
4. Recpt of Goods/Invoice Entry -
  - Header tab - "PO No." "No. Inv"
  - Lines tab - "Receive complete Purchase order?" "Back Ordered" "Invoiced"
5. Daily Recpt Register - "PO NO:" "VEND:" "SCHED:" "INV:""

**Mat Req/Ret**

1. Return of Goods Entry –  
Header tab - “PO No.” “No. Inv”
2. Return Order Printing – “RETURN ORDER”

**Inquiries**

1. PO Inquiry  
Header tab – “Expire Date” “Date Required” “Fax”  
Lines tab - “Original” “Ordered” “Balance”, “Ordered” “Received” “Back Order”,  
“Requested” “Issued” “Balance”  
Totals tab – “Last Receipt No.” “Last Receipt Date”

**Reports**

1. Open PO by Item - “ITEM NUMBER/P.O. NO.”, PO Status “OPEN” “NEW” “BACK”
2. Open PO by Job – “JOB “ “WAREHOUSE”
3. PO Recap – Statuses in recap detail, statuses after report total ok
4. Open PO by W/O – “WORK ORDER” in heading

**Period End**

1. PE Processing - “Warning! Receipts, Returns or Material Requisition data entry is in process”  
Full Period End – PO Period End Reports panel all in English  
Purge warnings in English “Purchase Orders will be ...”
2. Purchases Clearing – Reports by Item in English

**Setup**

1. Misc Charge – Type drop box on new item

**RMA****Main**

1. RMA Entry –  
Lines tab – RMA detail line Cust action drop box, Item action drop box
2. Print Receivers – “Do you want to print RMA Receivers?”
3. Receipts Entry – Lines tab – Customer action drop box, Item action drop box

**Setup**

1. Entry tab – Entry grid desc, “Extend Warranty Based on Ship Date”
2. Memo Manager - Grid Memo Options drop box

**Utilities**

Purge utilities message all start with “Deseas eleminar” then insert an English phrase “Expired RMAs”, “return reason detail”, “RMA receipts history”, and end on or before mm/dd/yyyy?”

**Job Cost****Main**

1. Job Cost Maint/Inq  
Renumber – “Cannot change Job Number with Job Activity”

2. Job Field Rpt Entry –  
    “Delete Field Report Entry for Job Number...”
3. Job Field Report Register – “COST” “JTD COST” 2<sup>nd</sup> row of heading
4. Job Posting Entry –  
    Header – “Credit Account” “Unit Cost” “Units” “Extension”, Cost Type drop box  
    Line Labels – “Unit Cost” “Units” “Extension”
5. Daily Job Trans Register in English when printed straight from Job Posting update.

### **Job Estimate**

1. Item Pricing Maintenance –  
    Cost Code Type drop box  
    Listing in English
2. U/M Conversion Listing in English

### **Reports/Custom Reports**

1. Job Analysis Report, WIP Report, Job Cost Code Detail Rpt, Job Bill History Rpt, Job Closeout Rpt,  
    Crystal Custom reports – “SQUARE FT:” “ORIGINAL” “ACTUAL” “PROJ COST”
2. Job Transaction Detail Rpt – “SQUARE FT:”

### **Period End**

1. PE Processing – Purge,Close messages in English, List of Reports to print for Period End,
2. JC History Purge Utility – “Do you want to purge selected jobs?”
3. JC History Restore Utility - “Do you want to restore selected jobs?” \*\* This didn’t seem to do anything after purging a job. Nothing restored.

### **Bill of Materials**

#### **Main**

1. Where Used Inq – All heading labels are in English when you switch between  
    Single/Indented/Summarized.
2. Production Entry – “Cancel Production Entry #####?”

### **Work Orders**

#### **Main**

1. W/O Entry – Header “Make For” dropbox
2. Routing Maint–Listing in English
3. W/O Traveler Printing - in English
4. W/O Transaction Jnl – “Misc Labor/Misc Material Register/Outside Processing Register” in title on registers

### **Inquiries**

1. Component Where-Used – “This item is not used in any work orders or templates.”

### **Reports**

1. Open W/O Report, Work Order History Report - “WHLSTALE/RETAIL:” “WARRANTY THRU:”  
    “DELIVERY DATE:” “LABOR:” “MATERIAL:” “OUTSIDE PROCESS:” “FIXED OVERHEAD:”  
    “VARIABLE OVERHEAD:”

2. WIP Report – “LABOR:” “MATERIAL:” “OUTSIDE PROCESS:” “FIXED OVERHEAD:” “VARIABLE OVERHEAD:”
3. WIP Recap – “MATERIAL” “VARIABLE ” “DIRECT WIP” “ WIP” “TOTAL WIP” “REPORT TOTAL”

**Setup**

1. W/O Options - Main tab Pick Sheet print order drop box “Sort by Warehouse”, most of listing in English

**Custom**

1. Open W/O Rpt – “WHLSALE/RETAIL” “WARRANTY THRU” “DELIVERY DATE”

**MRP****Setup**

1. W'H Grouping Listing in English

**Payroll****Main**

1. Check Printing-check format drop box not consistent - translations

**Reports**

1. PR Check History – “Sorted by..” message in heading
2. Earnings & Deduction Rpts – period to print drop box
3. Perpetual History Rpt, Pay Rate Change Rpt, Employee Masterfile Audit – in English

**Period End**

1. Quarterly 941 Printing - not applicable/ actual Ca form.
2. PE Processing –  
Processing messages (Check History will be consolidated.., Perpetual Hist will be...).  
List of reports to print in English

**Setup**

Data Entry in progress warning in English

1. Options – Addtl tab - Pay Rate for Ben accrual drop box
2. Earnings Code Maint - Earnings Type drop box, Emp Pay Rate drop box
3. Deduction Code Maint - Calc Method drop box
4. Department Maint – Listing now translating “PAYROLL:” “VACATION LIAB:” “VACATION EXP:” “SICK LIAB:” “SICK EXP:” “OTHER LIAB:” “OTHER EXP”, but the data doesn't line up like it does in Eng on each side of colon :.
5. Tax Table Maint – Listing not translating “EMPLOYEE FICA” “EMPLOYEE SDI” “EMPLOYEE SUI” “FED W/H MAX:” “HEAD OF HOUSEHOLD” even though they are in the table and translated.
6. Workers Comp Maint-“Straight” not found in template

**Electronic Reporting****Main**

1. W2 Electronic Rpt - “Federal file built....” “State file built...” messages
2. 1099 Electronic Rpt – Blank field messages, “File built...” message

3. Submitter's Information Listing in English
4. P.Rico Earn/Ded Code Listing in English

### Time Card

#### **Main**

1. TC Entry & Edit – “Hours Recap” panel in English; “Cost cannot be combined with...”
2. TC Entry –New –“Hours Recap” panel in English
3. TC Punch In/Out – “Hours Recap” panel in English , “Missed punch message..”
4. TC Inq – “Hours Recap” panel in English
5. TC History Inq - “Hours Recap” panel in English

#### **Reports**

1. Time Card Report – “Hours Worked” in hdr
2. Certified PR Rpt, days names abbrev in English
3. Gross Earnings Rpt – days names abbrev in English, Earnings type in English
4. Except Calendar Rpt - month names abbrev in English

#### **Period End**

1. Purge – “TimeCard transfer to history ...” in English
2. Purge History – “TimeCard history purge complete!...” in English

#### **Job Cost**

1. Job Cost Selection – Most message panels in English
2. Job Cost Selection Audit Rpt– in English
3. Job Cost Dist Register/Update – 2<sup>nd</sup> page JC Burden Allocation Register in English
4. Daily Job Transaction Register in English

#### **Setup**

1. Options – Tab desc in English
2. Cost Code/Earnings Code Setup – Listing in English
3. Time Card Employee Maint – Listing in English
4. Time Card Job Maint – Listing in English
5. Time Card Utilities - Selection panel in English

### Visual Integrator

#### **Main**

1. Import Job Maint, Job Select – “Is \*\*\*\* a new job?” “Execute this job?”, “Do you want to Import records..” Import Summary panel in English
2. Export Job Maint, Job Select – “Is \*\*\*\* a new job?” “Execute this job?”, “Do you wish to Export records...” Export Summary panel in English

### E-Business

#### **Main**

1. User ID Maintenance - Bad Password warning, “Telephone1” “Telephone2”, “USER TYPE” prints instead of the customer name
2. No info to print in Accept/Reject, Auto Accept , registers.



Custom Office**Main**

1. Customizer Selection –
  - 99% of menu items translated unless there's a dash in the description (ie “Bar Code Lot/Serial Labels – Graphical” or “Item Maintenance – On-the-fly”)
  - Customizer Editing panel is not translated
2. User Defined Fields & Table Maintenance-
  - Tree translated only about 50/50.
  - UDF Updating message 50/50 translated.

**Utilities**

1. Rebuild Customizer Log – module tree and bottom message not translated