



# **DSD Business Systems**

**Sage 100 Enhancements**

**LMCC**

**Company Consolidation**

**Version 5.30**



Information in this document is subject to change without notice.

Copyright 1993-2016, DSD Business Systems All rights reserved.

Company Consolidation User's Manual  
Version 5.30

5 May, 2016

DSD Business Systems  
5120 Shoreham Place  
Suite 280  
San Diego, CA 92122  
858/550-5900 8:00am to 5:00pm PST  
858/550-4900 Fax

### Trademarks

**ProvideX®** is a Trademark of Sage Software.

**Windows** is a trademark of Microsoft Corporation.

**Sage 100®** is a registered trademark of Sage Software.

**PXPlus®** is a registered trademark of PVX Plus technologies

All other product names and brand names are service marks, and/or trademarks or registered trademarks of their respective companies.

This documentation and the software described herein, is prepared and published under license. Sage Software has not tested or verified either the software or any representation in this documentation regarding the software. Sage Software does not make any warranty with respect to either this documentation or the software described herein, and specifically disclaims any warranty, express or implied, with respect hereto, including the warranties of fitness for a particular purpose and merchantability.



---

## Table of Contents

---

<b>SECTION A: INTRODUCTION</b>	<b>5</b>
WEB RESOURCES .....	5
SUPPORT .....	5
COMPANY CONSOLIDATION FEATURES .....	6
REQUIRED LEVELS .....	7
INSTALLATION .....	7
DSD ENHANCEMENT CONTROL PANEL .....	9
<b>SECTION C: SETUP</b>	<b>11</b>
PRODUCT SETUP .....	11
COMPANY CONSOLIDATION SETUP .....	12
OPTIONAL USER-DEFINED FIELDS .....	14
<b>SECTION D: SYSTEM OPERATIONS</b>	<b>15</b>
PRODUCT USE .....	15
RUNNING THE CONSOLIDATION .....	15
HOW TABLES ARE CONSOLIDATED .....	16
General Ledger Module .....	17
Accounts Receivable Module .....	21
Accounts Payable Module .....	29
Inventory Management Module .....	35
Common Information Module .....	38
Job Cost Module .....	39
Purchase Order Module .....	42
Sales Order Module .....	45
Service Center Module .....	50
<b>SECTION E: UNINSTALL DSD ENHANCEMENTS</b>	<b>59</b>
<b>LICENSE AGREEMENT</b>	<b>62</b>
<b>FAX TRANSMITTAL FORM</b>	<b>64</b>

## Section A: Introduction

---

This manual contains a description and instructions for this DSD product. Operating instructions are included for the features added by this product to Sage 100. For instructions on using Sage 100, refer to the appropriate Sage 100 manual, or call your Sage 100 reseller. DSD Business Systems offers excellent Sage 100 support, at an hourly rate.

### Web Resources

DSD web site: <http://www.dsdinc.com>

The Enhancement page contains:

- Current Release Schedule*
- Purchasing Information*
- Installation Instructions*
- Product Support*
- Enhancement Links*

LMCC Company Consolidation:

<http://www.dsdinc.com/enh/pages/LMCC.htm>

The product web page contains:

- Product Description*
- Web Links*
- Current Product Version Table*
- Product Installation File Download*
- Product Manual in .pdf Format*
- Revision History*
- FAQ*

### Support

DSD provides product support through Sage 100 resellers. Support is provided for the current version. Older versions are supported at an hourly rate. DSD's telephone number is **858-550-5900**. Fax: **858-550-4900**.

For a hard error, where the program displays an error dialog, report:

- Error number.*
- Program name.*
- Line number.*
- Program version.*

*Exact sequence that caused the error, including menus and menu selections.  
Other pertinent information.*

If leaving a message or faxing, please include:

*Your name.*

*Your phone number (and fax if applicable) and extension.*

It is possible to be unable to duplicate a problem, because of data corruption or because we have not exactly duplicated a particular operating environment. In such circumstances, we can only continue to try to fix the problem if we can either access the system with Symantec PCAnywhere or by some other means access or duplicate the system.

### ***Company Consolidation Features***

The Company Consolidation Enhancement allows users to combine data tables for multiple companies into one consolidated company to allow for consolidated reporting or to create a new operating company (for processing live transactions). Data tables from Accounts Payable, Accounts Receivable, Common Information, General Ledger, Inventory Management, Job Cost, Purchase Order, Sales Order and Service Center modules are included in the consolidation. Source company data remains intact allowing users ultimate flexibility for testing and correcting any data irregularities within the source companies before a final consolidation. Testing and verification of the consolidated data is highly recommended and critical for success.

A listing of the data tables included in the consolidation can be found in "How Tables are Consolidated".

## Section B: Getting Started



- **If you reinstall or upgrade one of the Sage 100 modules listed in the following table, you must also reinstall this Enhancement.**
- Enhancements from different Sage Developers are generally not designed to work together. If installed together, problems are likely to occur.
- **Check with DSD before installing more than one Enhancement.**

**Required Levels**

Sage 100 Module	Module Required	Required Level
L/M	Y	5.30

**Installation**

1. **Back-up:** Exit all Sage 100 sessions. Back-up existing Sage 100 data.
2. **Check Levels:** Sage 100 module levels **must match** those listed above.
3. **Run Enhancement Setup Program:** Save the executable installation program (sent to you or downloaded from our website) in a convenient location on the Sage 100 server. Launch the program from Windows Explorer or by selecting Start/Run, and then browse for the file in the location you saved it. Follow on-screen instructions.
4. **Send your Sage Serial Number to your DSD Representative:** Send your Sage Serial Number to your DSD representative in order for us to send you back the encrypted keys to unlock your system. This serial number can be found in Library Master\Setup\System Configuration, Tab 3. Registration as Serial Number.
5. **Re-Start Sage 100:** Sage 100 will be updated.
6. **Unlock the Enhancement:** DSD Enhancements must be unlocked to run. When any part of the Enhancement is run for the first time, the **DSD Enhancement License Agreement and Activation** window will appear. Follow the steps shown on that window. *You can click the Help button for more detailed instructions.*

**Note:** On the next page is a screenshot of the DSD Enhancement License Agreement and Activation window.

After accepting the License Agreement, you can then select the type of unlocking that you'd prefer. The choices are File, Web, Demo and Manual Entry.

**File Unlock:** After receiving your encrypted serial number key file from DSD, and placing that file in the MAS90/SOA directory, selecting this option will unlock all products keys contained in the file. This means you can unlock all enhancements at once using this option.

**Web Unlock:** If the system that is running the DSD Enhancement *has web access* and you *have sent DSD your Sage Serial number*, you can unlock the Enhancement without assistance using Web Unlock. When this option is selected, the program will attempt to download encrypted

serial number key file from DSD and then proceed to unlock all enhancements contained in the file.

- The Sage 100 system that is being used must have web access for this option to be effective.
- You can send your Sage Serial Number to your DSD Enhancements sales representative.

**Demo Unlock:** If a Demo mode is available for the Enhancement you're running, you will be able to Demo unlock the product without assistance from DSD for demo purposes.

- Creating a Demo Unlock is a good way to temporarily unlock DSD Enhancements off-hours, if you do not have web or email access. Later, you can unlock the product fully, during business hours.

**Manual Entry Unlock:** If you want to unlock a single enhancement using a single encrypted key, you can select this option and enter the 64 character key you receive from DSD by copy and paste.

**Note:** You can also unlock a DSD Enhancement through the **DSD Enhancement Control Panel** found on the **Library Master Utilities Menu**. Then, select the Enhancement with your mouse from the list of Enhancements and click the **Unlock Product** button on the right side of the window.

7. **Convert Data:** After registration, the Data Conversion window will appear. Follow on-screen instructions to complete data conversion. You can exit the conversion program without converting data. The Enhancement will not proceed, however, until data is converted. If you enter an enhanced program and data has not been converted, the conversion program will run again.



## DSD Enhancement Control Panel

Starting with version 3.61, all DSD Enhancement products include DSD's Enhancement Control Panel. The **DSD Enhancement Control Panel** is accessed from the **Library Master Utilities** menu.

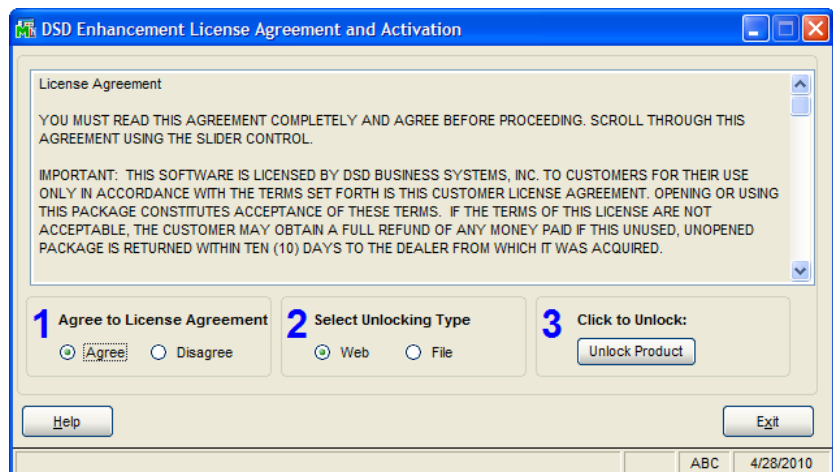
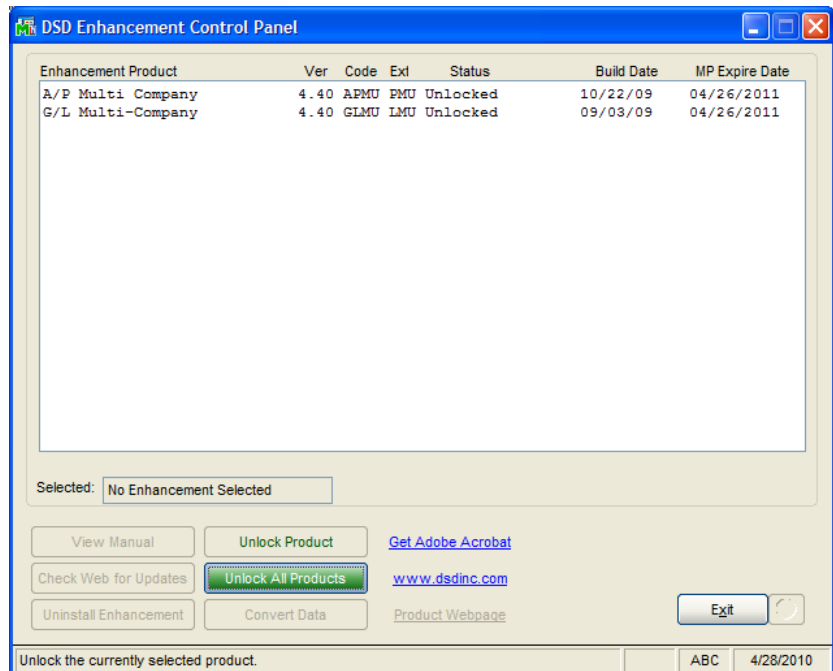
The DSD Enhancement Control Panel is a simple to use yet powerful system to help maintain DSD Enhancements installed on a Sage 100 system. To use it, select an Enhancement product from the list on the window and then click the button, on the right side of the window, which corresponds with the desired task.

**View Manual:** This button will display the product manual for the selected Enhancement using Adobe Acrobat. For this to be possible, the PDF file for the corresponding manual must be in the "MAS90/PDF" folder in the Sage 100 system. If the file is not present, and the system has web access, the correct PDF file will be automatically downloaded from the DSD website, put into the "MAS90/PDF" folder and then displayed.

**Check the Web for Updates:** This button will check the DSD website to see what the current build is the selected Enhancement and alert the user if a later version is available. *This requires an FTP web connection on the Sage 100 system.*

**Unlock Product:** This will cause the DSD Enhancement License Agreement and Activation window to appear. Using this window is described on the previous page. *This button is disabled if the selected Enhancement is already unlocked.*

**Unlock All Products:** This will cause the DSD Enhancement All License Agreement and Activation window to appear. This window is similar to the one described on the previous page, but has only web and file as options to unlock. *This button is never disabled.*



**Convert Data:** After verification, the selected Enhancements data conversion program will run. Data conversion is non-destructive, and may be triggered any number of times. Sometimes this is required to fix data records imported or updated from a non-enhancement installation.

**Help:** The Help button, located at the bottom right of the window, opens an HTML help file .

**Get Adobe Acrobat:** Opens the Adobe Acrobat website to the page where Acrobat can be downloaded and installed.

**Uninstall Enhancement** If this option is available, then selecting this button will start the un-install process, removing the enhancement from the system.

There are also links to the DSD website and the Enhancement page on that site.

## Section C: Setup

---

### Product Setup

Before you can actually consolidate companies, you must follow these basic steps; Determine which of your companies will be the primary company. This one is the first one to be consolidated, so it should probably be the one with the most modules and options installed.

1. Create the consolidated company. This is a new company that will be used to consolidate all the other companies into. You cannot use an existing live company as the consolidated company because the consolidated company is wiped out and recreated every time you run the consolidation. In fact, it is recreated from the aforementioned primary company.
2. Copy the primary company to the consolidated company using the Copy function in Sage 100 ERP Company Maintenance. This only needs to be done one time, but it will make the consolidated company look exactly like the primary company. When the actual consolidation is run, all the tables listed in the table reference below (See How Tables are Consolidated) are cleared out in the consolidated company, then rebuilt from current values in the primary company. When this step is finished, the consolidated company looks very much like the primary company.
3. Create User-Defined fields to store the original company and the original document. OPTIONAL! When records are merged into the consolidated company tables, document numbers such as sales order, purchase order, invoice number and service order are changed because there are duplicated across two or more companies. If you wish to have some information about which company was the source of that particular record, and what the original document number was, you can add two user-defined fields, ORIGINAL\_COMPANY and ORIGINAL\_DOCUMENT, to the tables where you wish to track that information. See Optional User-Defined Fields for more information.

Once you have followed the steps above you are ready to go through the Company Consolidation Setup steps.

**Company Consolidation Setup**

Select the Company Consolidation Setup task from the Library Master Setup menu. The following screen will appear and allow the user to specify the code for the Consolidation Company as well as the Source Companies and Modules to be consolidated.

**NOTE** - All companies must exist in Sage 100 ERP. Create the Consolidation Company by copying the first source company using the Copy Company feature in Company Maintenance (Library Master Main menu).

Only one company may be defined as the consolidated company, and users must select at least one source company. Source Company 1 is treated as the primary source company. If any records in that company are duplicated in the other source companies, the second, third and subsequent records are ignored and the first record written is saved. The exceptions to this rule are the records that are consolidated (merged) as outlined in the later section titled Consolidated Tables Listing Grouped by Module. The primary company (source Company 1) should be the company containing the most data. After defining the source companies to be merged into the Consolidation Company, be sure to select the Accept button to save the settings.

**Modules to Consolidate** - Check-boxes at the bottom of the panel indicate which modules will be consolidated. All of them are checked by default on a new setup record.

**C/I** - This check-box indicates that the C/I data files will be copied/merged during the consolidation. This check-box can only be viewed.

**G/L** - This check-box indicates that the G/L data files will be copied/merged during the consolidation. This check-box can only be viewed.

**A/R** - Check this box to copy/merge the A/R data files during the consolidation. If you clear this box, the A/R data files will be cleared in the target company, and the source companies' data will not be copied to those files. Note: You will not be able to clear this box if the S/O or S/M box is checked.

**A/P** - Check this box to copy/merge the A/P data files during the consolidation. If you clear this box, the A/P data files will be cleared in the target company, and the source companies' data will not be copied to those files. Note: You will not be able to clear this box if the P/O box is checked.

**I/M** - Check this box to copy/merge the I/M data files during the consolidation. If you clear this box, the I/M data files will be cleared in the target company, and the source companies' data will not be copied to those files. Note: You will not be able to clear this box if the S/O, or P/O, or S/M box is checked.

**S/O** - Check this box to copy/merge the S/O data files during the consolidation. If you clear this box, the S/O data files will be cleared in the target company, and the source companies' data will not be copied to those files. Note: You will not be able to clear this box if the S/M box is checked. When you check this box, the A/R and I/M boxes will be checked automatically.

**P/O** - Check this box to copy/merge the P/O data files during the consolidation. If you clear this box, the P/O data files will be cleared in the target company, and the source companies' data will not be copied to those files. Note: When you check this box, the A/P and I/M boxes will be checked automatically.

**J/C** - Check this box to copy/merge the J/C data files during the consolidation. If you clear this box, the J/C data files will be cleared in the target company, and the source companies' data will not be copied to those files.

**S/M** - Check this box to copy/merge the S/M data files during the consolidation. If you clear this box, the S/M data files will be cleared in the target company, and the source companies' data will not be copied to those files. Note: When you check this box, the A/R, I/M and S/O boxes will be checked automatically.

**Merge Audit Tables** - Check this box to copy/merge the audit data files for the selected modules during the consolidation. If you clear this box, the audit data files will be cleared in the target company, and the source companies' data will not be copied to those files.

**NOTE** - If the Consolidation Company is going to be a live operating company, be sure to delete the setup after the consolidation is performed. Otherwise, any subsequent running of this utility will erase and overwrite the Consolidation Company with current data.

***Optional User-Defined Fields***

In some cases when records are merged into the consolidated company tables, the document number has to be changed in order to keep it unique. The "document number" is a generic term to refer to the sales order, invoice, service order, purchase order, check number, etc. In these cases, when the document number is changed, it can be a little tricky after the consolidation to know what the original document was and which company it was originally in. There is no way to avoid the change, but you can keep track of the original document and company by adding these two user defined fields to all the tables where you wish to have access to the original company and original document. Consult with your Sage business partner (reseller) about using Custom Office to add the following fields to all the appropriate tables:

- **ORIGINAL\_COMPANY** - A three-character string that will hold the original company that the record came from. In the case that a single key (ex. Customer) was in multiple companies but the record is merged, the ORIGINAL\_COMPANY will hold the first company encountered that had that record.
- **ORIGINAL\_DOCUMENT** - At least a ten-character string that will hold original sales order, invoice, service order, purchase order, check number or other unique document number from the original record.

For more information about how various tables are treated when the consolidation is run, check out [How Tables are Consolidated](#)

## Section D: System Operations

### Product Use

Before you can actually run the consolidation program, you must do the steps described in the Product Setup.

- Running the Consolidation - Explains the process for actually running the consolidation.
- How the Tables are Consolidated - Detailed description of how each table is merged, organized by module.

### Running the Consolidation

**NOTE** - Correct any data errors you may have by running the following Library Master Utilities for each source company in this order for each module: Rebuild Key Files, Analyze and Relink Files and Rebuild Sort Files. This is especially important if the consolidation company will be used as a live operating company.

On the Library Master main menu, select the Consolidate Companies task.

The companies displayed on this screen are set up from the setup menu.

Company Consolidation (PRO) 1/23/2014

Consolidation Company: CC0 Consolidated Company

Source Companies

Primary Company	SR1	Source Company One	Company 11	
Company 2	SR2	Source Company Two	Company 12	
Company 3	SR3	Source Company Three	Company 13	
Company 4			Company 14	
Company 5			Company 15	
Company 6			Company 16	
Company 7			Company 17	
Company 8			Company 18	
Company 9			Company 19	
Company 10			Company 20	

Modules to Consolidate

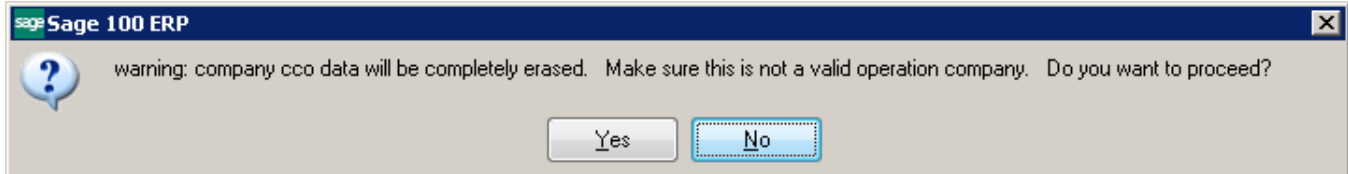
C/I ☒ G/L ☒ A/R ☒ A/P ☒ I/M ☒ S/O ☒ P/O ☒ J/C ☒ S/M ☒ Merge Audit Tables ☒

Check for Duplicates Consolidate All Proceed Accept Cancel Delete

To perform the merge for ALL the consolidation companies that you have defined, click "Consolidate All". If you only wish to run the consolidation for the company that is currently on the

screen, click "Proceed". If you have only defined one consolidation company, then either button will work.

The following warning will pop up to make sure you are aware that the Consolidation Company will be erased and recreated.



If you answer yes to this prompt, the consolidation will proceed without further interruption, unless it finds missing tables, in which case it will warn the user.

When the consolidation is performed, the program will first clear the data files in the selected modules for the target company, then it will copy the first source company directly to the target company to recreate that company's data files. At this point, the target company will look exactly like the first source company. After the initial creation of the target company from the first source company, the program will go through all the other source companies in the configuration list and will copy or merge data into the target company as outlined in the section titled Consolidated Tables Listing Grouped by Module.

**NOTE** - You must rebuild the sort files for all modules after running the Company Consolidation utility. If the consolidation company will be used as a live operating company, it is highly recommended that you run the following Library Master Utilities for the consolidation company in this order for each module: Rebuild Key Files, Analyze and Relink Files and Rebuild Sort Files.

### *How Tables are Consolidated*

When you set up Company Consolidation, you specify a primary company by entering it at the top of the list. When the consolidation process starts, the target company (the consolidated company) is effectively cleared out and the primary company is copied into its place. If you were to stop the process at that point, the consolidated company would look almost exactly like the primary company.

After the initial copy of the primary company, the program turns its attention, in order entered, to the other companies. It goes through all the tables in the list below and performs one of the operations listed below. The categories describe how Company Consolidation will treat records that have the same key. For example, if the consolidation company already has a customer number or a G/L account that is found in one of the other companies, how will that record be treated? There are four basic ways to handle a duplicate record:

- **Combined** – In this case, the record that already exists in the consolidated company will be kept. This consolidation company record might have come from the primary company, or it might have come from one of the other source companies prior to the one that is currently being processed. Either way, the first one to be written to the consolidation company is the



one that is kept. However, in some cases there are fields which are analyzed individually and treated separately.

- **Summed** – For some fields, such as CreditLimit in the AR\_Customer table, the values in the source company are added to the value in the consolidated company.
  - **Maximum** – In some cases, such as the LastActivityDate or LastPaymentDate in the AR\_Customer table, the most recent value is stored in the consolidated company.
- **Change to Create Unique Key** – For some tables, it is important that each record remain unique so, the key value, or document ID, is converted. Sales orders, invoices, and purchase orders, commonly referred to a document, are examples of this. For these a new number is created by taking the source company code and adding a four-character sequence number to make it unique. Every time that document appears in any table, it is converted to the converted document number.
- **Increment Sequence** – Many tables have records that must be unique, but they are made so with the use of sequence numbers in the key. In these cases, the consolidation program will simply increment the sequence number to make sure that the source record finds a unique place in the consolidated table. Keep in mind that often there is also a conversion happening before the record is being written, as in invoice transactions or invoice history.
- **G/L Account Combined** – G/L Accounts deserve special mention because there is a special way they are identified. The formatted G/L account is actually “combined”, meaning that when two companies have the same formatted G/L account, the information from the first company encountered will appear in the consolidated company. However, the underlying unique key for the G/L account record is the Account Key. This is a nine-character code that is stored in all the various tables that reference G/L accounts. For example, when a sales order line shows a G/L account, what is actually stored in that detail line is not the formatted account, but a nine-character Account Key. For example, the formatted G/L Account may be '1400-001-002:100', but the internal Account Key may be '14A011234'. Even if two companies have the same formatted G/L account, the Account Key for that account is probably different between the two companies. When consolidating, the program creates an Account Key conversion process to make sure that any reference to a specific formatted G/L account will use the same unique Account Key and new account copied to the consolidated company will get a unique Account Key assigned.

Below is a list of all the tables that are consolidated by Company Consolidation. For each table we try to say how the duplicate records are handled using the four categories described above. For each table we will list the fields that are converted, incremented, summed, maximized or minimized.

## General Ledger Module

### GL\_Account - G/L Account Combined.

- CompanyCode - Set to consolidation company code

**GL\_AccountHistory - G/L Account Combined.**

**GL\_PeriodBudgetDetail – combined.**

- AccountKey – G/L Account Conversion
- DebitAmount - summed
- CreditAmount – summed

**GL\_PeriodPostingHistory - combined.**

- AccountKey - G/L Account Conversion
- BeginningBalance - summed
- DebitAmount - summed
- CreditAmount – summed

**GL\_DetailPosting - increment sequence.**

- AccountKey - G/L Account Conversion
- DocumentNo – changed to match converted document number (i.e. Invoice number in AP\_OpenInvoice)
- DocSequenceNo changed to match converted document sequence (i.e. Invoice Sequence Number in AR\_InvoiceHistoryHeader)
- SequenceNo – incremented

**GL\_AccountCategory - combined.**

**GL\_AccountType – combined.**

**GL\_AccountGroup – combined.**

**GL\_AccountMemo - increment sequence.**

- AccountKey - G/L account conversion
- SeqNo – incremented

**GL\_AccountMemoSettings - increment sequence.**

- AccountKey - G/L account conversion
- SeqNo – incremented

**GL\_MainAccount - combined.**

- CompanyCode - Set to consolidation company code

**GL\_MainAccountMemo - increment sequence.**

- SeqNo – incremented

**GL\_MainAccountMemoSettings - increment sequence.**

- SeqNo – incremented

**GL\_SubAccount - combined.****GL\_SourceJournalHistory - combined.**

- DebitAmount - summed
- CreditAmount – summed
- Deleted – if this variable is set to “Y”, the record will be removed

**GL\_TransactionJournalHistory - increment sequence.**

- OffsetAccountKey - G/L account conversion
- SequenceNo – incremented

**GL\_RecurringJournalHeader - change to create unique key.**

- Reference - changed to create unique key

**GL\_RecurringJournalDetail - change to create unique key.**

- Reference - changed to match reference in the GL\_RecurringJournalHeader file
- AccountKey - G/L account conversion

**GL\_RecurringJournalHistory - change to create unique key and increment sequence.**

- Reference - changed to match reference in the GL\_RecurringJournalHeader file
- SequenceNo – incremented

**GL\_Bank - combined.**

- CashAccountKey - G/L account conversion

**GL\_AllocationHeader - change to create unique key.**

- AllocationNo - changed to create unique key
- SourceAccountKey - G/L account conversion

**GL\_AllocationDetail - change to create unique key.**

- AllocationNo - changed to match allocation number in the GL\_AllocationHeader file
- file
- AccountKey - G/L account conversion
- LinkedAccountKey - G/L account conversion

**GL\_GeneralJournalHistory - increment sequence.**

- AllocationNo - changed to match allocation number in the GL\_AllocationHeader file
- SequenceNo – incremented

**GL\_Budget - combined.**

**GL\_BudgetOptions - combined.**

**GL\_CheckMicr - combined.**

**GL\_CompanyMemoManagerSettings - combined.**

**GL\_FinancialReport - combined.**

**GL\_FinancialReportGroup - combined.**

**GL\_FinancialTerminology - combined.**

**GL\_PayAccount - G/L Account Combined.**

- AccountKey - G/L account conversion

**GL\_PayActivity - increment sequence.**

- SequenceNo – incremented

**GL\_PayBank - combined.**

- OffsetAcctKey - G/L account conversion

**GL\_PayOptions - combined.**

**GL\_Rollup - combined.**

- CompanyCode - Set to consolidation company code

**GL\_SalesTax - combined.**

- ARSalesTaxAccountKey - G/L account conversion
- APSalesTaxAccountKey - G/L account conversion
- APUseTaxAccountKey - G/L account conversion
- NonRecoveryTaxAccountKey - G/L account conversion

**GL\_SourceJournal - combined.**

- OffsetAccountKey - G/L account conversion

**GL\_SummaryDetailDrillDown - increment sequence.**

- AccountKey - G/L account conversion
- APDivisionNo – Convert A/P division
- ARDivisionNo - Convert A/R division
- DocumentNo – changed to match converted document number (i.e. Invoice

- number in AP\_OpenInvoice)
- DocSequenceNo changed to match converted document sequence (i.e. Invoice
- Sequence Number in AR\_InvoiceHistoryHeader)
- SequenceNo – incremented

**GL\_Audit - increment sequence.**

- SequenceNo – incremented
- AccountKey - G/L account conversion

**GL\_GeneralJournalMemo - increment sequence.**

- SeqNo – incremented

**GL\_GeneralJournalMemoSettings - increment sequence.**

- SeqNo – incremented

**GL\_TransactionJournalMemo - increment sequence.**

- SeqNo – incremented

**GL\_TransJournalMemoSettings - increment sequence.**

- SeqNo – incremented

***Accounts Receivable Module*****AR\_Options – use Consolidated Company AR\_Options table.**

- Divisions – set to “Y” in the Consolidated Company if it is “Y” in any Source Company

**AR\_Division - combined.**

- ARDivisionNo - Convert A/R division
- AccountsReceivableAcctKey - G/L account conversion
- CashAcctKey - G/L account conversion
- DiscountsAllowedAcctKey - G/L account conversion
- FreightAcctKey - G/L account conversion
- SalesTaxAcctKey - G/L account conversion
- FinanceChrgAcctKey - G/L account conversion
- RetentionReceivableAcctKey - G/L account conversion

**AR\_Customer - combined.**

- ARDivisionNo - convert A/R division
- SalespersonDivisionNo - convert A/R division
- SalespersonNo – convert salesperson
- SalespersonDivisionNo2 - convert A/R division
- SalespersonNo2 - convert salesperson

- SalespersonDivisionNo3 - convert A/R division
- SalespersonNo3 - convert salesperson
- SalespersonDivisionNo4 - convert A/R division
- SalespersonNo4 - convert salesperson
- SalespersonDivisionNo5 - convert A/R division
- SalespersonNo5 - convert salesperson
- DateLastActivity - maximum
- DateLastPayment - maximum
- DateLastStatement - maximum
- DateLastFinanceChrg - maximum
- DateLastAging - maximum
- CreditLimit - summed
- HighestStmntBalance - summed
- UnpaidServiceChrg - summed
- BalanceForward - summed
- CurrentBalance - summed
- RetentionCurrent - summed
- AgingCategory1 - summed
- AgingCategory2 - summed
- AgingCategory3 - summed
- AgingCategory4 - summed
- RetentionAging1 - summed
- RetentionAging2 - summed
- RetentionAging3 - summed
- RetentionAging4 - summed

**AR\_CustomerMemo - increment sequence.**

- ARDivisionNo - convert A/R division
- SeqNo - incremented

**AR\_BillToSoldTo - combined.**

- SoldToDivisionNo - convert A/R division
- BillToDivisionNo - convert A/R division

**AR\_PriceLevelByCustPriceCode - combined.**

- ARDivisionNo - convert A/R division

**AR\_PriceLevelByCustShipTo - combined.**

- ARDivisionNo - convert A/R division

**AR\_CustomerContact - combined.**

- ARDivisionNo - convert A/R division

**AR\_CustomerSalesHistory - combined.**

- ARDivisionNo - convert A/R division
- DollarsSold - summed
- CostOfGoodsSold - summed
- CashReceived - summed
- FinanceCharges - summed
- NumberOfInvoices - summed
- NumberOfFinanceChrgs - summed

**AR\_CustomerSalespersonHistory - combined.**

- SalespersonDivisionNo - convert A/R division
- SalespersonNo - convert salesperson
- ARDivisionNo - convert A/R division
- DollarsSold - summed
- CostOfGoodsSold - summed

**AR\_Salesperson - combined.**

- SalespersonDivisionNo - convert A/R division
- SalespersonNo - convert salesperson
- SalesManagerDivisionNo - convert A/R division
- SalesManagerNo - convert salesperson

**AR\_TermsCode - combined.****AR\_OpenInvoice - change to create unique key.**

- ARDivisionNo - convert A/R division
- SalespersonDivisionNo - convert A/R division
- SalespersonNo - convert salesperson
- SoldToDivisionNo - convert A/R division
- InvoiceNo - changed to create unique key
- InvoiceHistoryHeaderSeqNo - changed to match invoice history

**AR\_OpenInvoiceSplitCommissions - change to create unique key.**

- ARDivisionNo - convert A/R division
- SalespersonDivisionNo - convert A/R division
- SalespersonNo - convert salesperson
- SalespersonDivisionNo2 - convert A/R division
- SalespersonNo2 - convert salesperson
- SalespersonDivisionNo3 - convert A/R division
- SalespersonNo3 - convert salesperson
- SalespersonDivisionNo4 - convert A/R division
- SalespersonNo4 - convert salesperson

- SalespersonDivisionNo5 - convert A/R division
- SalespersonNo5 - convert salesperson
- InvoiceNo - changed to match invoice number in the AR\_OpenInvoice file

**AR\_OpenInvoiceTaxSummary - change to create unique key.**

- ARDivisionNo - convert A/R division
- InvoiceNo - changed to match invoice number in the AR\_OpenInvoice file

**AR\_TransactionPaymentHistory - change to create unique key and increment sequence.**

- ARDivisionNo - convert A/R division
- InvoiceNo - changed to match invoice number in AR\_OpenInvoice
- InvoiceHistoryHeaderSeqNo\$ - changed to match invoice sequence number in AR\_InvoiceHistoryHeader
- SequenceNo - incremented

**AR\_CashReceiptsHistory - increment sequence.**

- ARDivisionNo - convert A/R division
- SoldToDivisionNo - convert A/R division
- AccountKey - G/L account conversion
- InvoiceNo - changed to match invoice number in AR\_OpenInvoice
- SequenceNo - incremented

**AR\_InvoiceHistoryHeader - change to create unique key and increment sequence.**

**NOTE** - Only invoice numbers that are currently in the Open Invoice File will be converted to be unique. Duplicate invoice numbers that are in history only will stay the same, but the HeaderSeqNo will be incremented.

- ARDivisionNo - convert A/R division
- SalespersonDivisionNo - convert A/R division
- SalespersonNo - convert salesperson
- SalespersonDivisionNo2 - convert A/R division
- SalespersonNo2 - convert salesperson
- SalespersonDivisionNo3 - convert A/R division
- SalespersonNo3 - convert salesperson
- SalespersonDivisionNo4 - convert A/R division
- SalespersonNo4 - convert salesperson
- SalespersonDivisionNo5 - convert A/R division
- SalespersonNo5 - convert salesperson
- BillToDivisionNo - convert A/R division
- WarehouseCode - convert warehouse
- InvoiceNo - changed to match invoice number in AR\_OpenInvoice
- HeaderSeqNo - incremented



- SalesOrderNo - changed to match SO number in SO\_SalesOrderHeader or SO\_SalesOrderHistoryHeader
- ApplyToInvoiceNo - changed to match invoice number in AR\_OpenInvoice
- D531ServiceOrderNo - changed to match Service Order number in SM\_531ServiceOrderHeader
- D531HeaderSeqNo - changed to match Header Sequence number in SM\_531ServiceOrderHistHeader

**AR\_InvoiceHistoryMemo - change to create unique key**

- InvoiceNo - changed to match invoice number in AR\_OpenInvoice
- HeaderSeqNo - changed to match invoice sequence number in AR\_InvoiceHistoryHeader

**AR\_InvoiceHistoryMemoSettings - change to create unique key.**

- InvoiceNo - changed to match invoice number in AR\_OpenInvoice
- HeaderSeqNo - changed to match invoice sequence number in AR\_InvoiceHistoryHeader

**AR\_InvoiceHistoryTaxSummary - change to create unique key.**

- InvoiceNo - changed to match invoice number in AR\_OpenInvoice
- HeaderSeqNo - changed to match invoice sequence number in AR\_InvoiceHistoryHeader

**AR\_InvoiceHistoryTracking - change to create unique key.**

- InvoiceNo - changed to match invoice number in AR\_OpenInvoice
- HeaderSeqNo - changed to match invoice sequence number in AR\_InvoiceHistoryHeader

**AR\_InvoiceHistoryDetail - change to create unique key.**

- ExtendedDescriptionKey - convert extended description key
- SalesAcctKey - G/L account conversion
- CostOfGoodsSoldAcctKey - G/L account conversion
- InventoryAcctKey - G/L account conversion
- WarehouseCode - G/L account conversion
- OrderWarehouse - convert warehouse
- APDivisionNo - convert A/P division
- InvoiceNo - changed to match invoice number in AR\_OpenInvoice
- HeaderSeqNo - changed to match invoice sequence number in AR\_InvoiceHistoryHeader
- PurchaseOrderNo - changed to match PO number in PO\_PurchaseOrderHeader or PO\_ReceiptHistoryHeader
- D531ServiceOrderNo - changed to match Service Order number in SM\_531ServiceOrderHeader

- D531HeaderSeqNo – changed to match Header Sequence number in SM\_531ServiceOrderHistHeader

**AR\_InvoiceHistoryLotSerial - change to create unique key.**

- InvoiceNo - changed to match invoice number in AR\_OpenInvoice
- HeaderSeqNo - changed to match invoice sequence number in AR\_InvoiceHistoryHeader

**AR\_RepetitiveInvoiceHeader - change to create unique key.**

- ARDivisionNo - convert A/R division
- BillToDivisionNo - convert A/R division
- SalespersonDivisionNo - convert A/R division
- SalespersonNo – convert salesperson
- ReferenceNo - changed to create unique key

**AR\_RepetitiveInvoiceDetail - change to create unique key**

- ARDivisionNo - convert A/R division
- SalesAcctKey - G/L account conversion
- CostOfGoodsSoldAcctKey - G/L account conversion
- InventoryAcctKey - G/L account conversion
- ReferenceNo - changed to match reference number in AR\_RepetitiveInvoiceHeader

**AR\_RepetitiveInvoiceTaxDetail - change to create unique key**

- ARDivisionNo - convert A/R division
- ReferenceNo - changed to match reference number in AR\_RepetitiveInvoiceHeader

**AR\_RepetitiveInvoiceTaxSummary - change to create unique key**

- ARDivisionNo - convert A/R division
- ReferenceNo - changed to match reference number in AR\_RepetitiveInvoiceHeader

**AR\_AlternateInvoice – combined.**

- ARDivisionNo - convert A/R division
- InvoiceNo – changed to match invoice number in AR\_OpenInvoice

**AR\_Analysis - combined.**

- CurrentNoOfInvs - summed
- CurrentTotalRcvbIs - summed
- CurrentOver30Days - summed
- CurrentOver60Days - summed
- Period1NoOfInvs - summed
- Period1TotalRcvbIs - summed
- Period1Over30Days - summed

- Period1Over60Days - summed
- Period2NoOfInvs - summed
- Period2TotalRcvbIs - summed
- Period2Over30Days - summed
- Period2Over60Days - summed
- Period3NoOfInvs - summed
- Period3TotalRcvbIs - summed
- Period3Over30Days - summed
- Period3Over60Days - summed
- Period4NoOfInvs - summed
- Period4TotalRcvbIs - summed
- Period4Over30Days - summed
- Period4Over60Days - summed
- Period5NoOfInvs - summed
- Period5TotalRcvbIs - summed
- Period5Over30Days - summed
- Period5Over60Days - summed
- Period6NoOfInvs - summed
- Period6TotalRcvbIs - summed
- Period6Over30Days - summed
- Period6Over60Days - summed
- TotalNoOfDaysOld - summed
- TotalOfOriginalInvAmounts - summed
- TotalNoOfInvs - summed
- LastUpdateDate - maximum

**AR\_CashSales – increment sequence.**

- ARDivisionNo - convert A/R division
- SalespersonDivisionNo - convert A/R division
- SalespersonNo - convert salesperson
- InvoiceNo - changed to match invoice number in AR\_OpenInvoice
- SequenceNo - incremented

**AR\_CustomerCreditCard – combined.**

- ARDivisionNo - convert A/R division

**AR\_CustomerCreditCardEBMUser – combined.**

- ARDivisionNo - convert A/R division

**AR\_CustomerDocumentContacts – combined.**

- ARDivisionNo - convert A/R division

**AR\_CustomerDocuments – combined.**

- ARDivisionNo - convert A/R division

**AR\_CustomerMemoSettings - increment sequence.**

- ARDivisionNo - convert A/R division
- SeqNo – incremented

**AR\_CustomerPDFLog - increment sequence.**

- ARDivisionNo - convert A/R division
- InvoiceNo – changed to match invoice number in AR\_OpenInvoice
- SalesOrderNo - changed to match SO number in SO\_SalesOrderHeader or
- SO\_SalesOrderHistoryHeader
- Sequence – incremented

**AR\_CustomerShipToTaxExemptions - combined.**

- ARDivisionNo - convert A/R division

**AR\_DepositHistory - increment sequence.**

- ARDivisionNo - convert A/R division
- InvoiceNo – changed to match invoice number in AR\_OpenInvoice
- SalesOrderNo - changed to match SO number in SO\_SalesOrderHeader or
- SO\_SalesOrderHistoryHeader
- SequenceNo – incremented

**AR\_PaymentType – combined.**

- AssetAcctKey - G/L account conversion
- CreditCardAccrualAcctKey - G/L account conversion

**AR\_SalespersonCommission - change to create unique key or combine.**

- ARDivisionNo - convert A/R division
- SalespersonDivisionNo - convert A/R division
- SalespersonNo – convert salesperson
- BillToDivisionNo - convert A/R division
- InvoiceNo – changed to match invoice number in AR\_OpenInvoice
- InvoiceTotal - summed
- SalesSubjectToComm - summed
- CostSubjectToComm - summed
- CommissionAmt - summed
- InvoiceAmountPaid – summed

**AR\_SalespersonHistory – combined.**

- SalespersonDivisionNo - convert A/R division

- SalespersonNo – convert salesperson
- CommissionDollarsSold - summed
- GrossProfitAmt - summed
- CommissionAmt – summed

**AR\_SalespersonLink – combined.**

- SalespersonDivisionNo - convert A/R division
- SalespersonNo – convert salesperson
- APDivisionNo - convert A/P division
- AccrualAcctKey - G/L account conversion
- VendorDefaultAcctKey - G/L account conversion
- ExpenseAcctKey - G/L account conversion

**AR\_SalesTax - change to create unique key or combine.**

- ARDivisionNo - convert A/R division
- InvoiceNo – changed to match invoice number in AR\_OpenInvoice
- TaxableSalesAmt - summed
- NonTaxableSalesAmt - summed
- TaxableFreightAmt - summed
- NonTaxableFreightAmt - summed
- SalesTaxInvoiced - summed
- SalesTaxCollected - summed
- TaxableTaxAmt - summed
- ExemptSalesAmt – summed

**AR\_TrackingByItemHistory - change to create unique key.**

- InvoiceNo - changed to match invoice number in AR\_OpenInvoice
- HeaderSeqNo - changed to match invoice sequence number in AR\_InvoiceHistoryHeader

**AR\_Audit - increment sequence.**

- SequenceNo – incremented
- ARDivisionNo - convert A/R division

***Accounts Payable Module*****AP\_Options – use Consolidated Company AP\_Options table.**

- Divisions – set to “Y” in the Consolidated Company if it is “Y” in any Source Company

**AP\_Division – combined.**

- AccountsPayableAcctKey - G/L account conversion
- DiscountsEarnedOrTakenAcctKey - - G/L account conversion

- CashAcctKey - G/L account conversion
- DiscountsLostAcctKey - G/L account conversion
- RetentionPayableAcctKey - G/L account conversion
- FreightAcctKey - G/L account conversion
- SalesTaxAcctKey - G/L account conversion
- NonRecoverableTaxAcctKey - G/L account conversion
- UseTaxAcctKey - G/L account conversion

**AP\_Vendor – combined.**

- APDivisionNo – convert A/P division
- AccountKey - G/L account conversion
- LastPurchaseDate - maximum
- LastPaymentDate - maximum
- BalanceDue - summed

**AP\_VendorMemo - increment sequence.**

- APDivisionNo – convert A/P division
- SeqNo - incremented

**AP\_OpenInvoice - change to create unique key.**

- APDivisionNo – convert A/P division
- InvoiceNo - changed to create unique key
- InvoiceHistoryHeaderSeqNo\$ - changed to match invoice sequence number in
- AP\_InvoiceHistoryHeader

**AP\_OpenInvoiceTaxSummary - change to create unique key.**

- APDivisionNo – convert A/P division
- InvoiceNo - changed to match invoice number in AP\_OpenInvoice

**AP\_CheckHistoryHeader - increment sequence.**

- APDivisionNo – convert A/P division
- TransferAPDivisionNo - convert A/P division
- CheckSeqNo - incremented

**AP\_CheckHistoryDetail - change to create unique key.**

- APDivisionNo – convert A/P division
- CheckSeqNo - changed to match check sequence number in
- AP\_CheckHistoryHeader
- InvoiceNo – changed to match invoice number in AP\_OpenInvoice
- InvoiceSeqNo - changed to match invoice sequence number in
- AP\_InvoiceHistoryHeader

**AP\_InvoiceHistoryHeader - increment sequence.**

- InvoiceNo – changed to match invoice number in AP\_OpenInvoice
- HeaderSeqNo - increment sequence
- APDivisionNo – convert A/P division
- PrepaidApplyToInvoiceNo – changed to match invoice number in AP\_OpenInvoice
- WarehouseCode – convert warehouse
- ARDivisionNo – convert A/R division
- PurchaseOrderNo - changed to match PO number in PO\_PurchaseOrderHeader or
- PO\_ReceiptHistoryHeader

**AP\_TransactionPaymentHistory - increment sequence.**

- APDivisionNo – convert A/P division
- InvoiceNo – changed to match invoice number in AP\_OpenInvoice
- InvoiceHistoryHeaderSeqNo\$ - changed to match sequence number in
- AP\_InvoiceHistoryHeader
- CheckHistoryHeaderSeqNo\$ - changed to match sequence number in
- AP\_CheckHistoryHeader
- SequenceNo - increment sequence
- ApplyToInvoice – changed to match invoice number in AP\_OpenInvoice
- ApplyHistoryHeaderSeqNo - changed to match sequence number in
- AP\_InvoiceHistoryHeader

**AP\_InvoiceHistoryMemo - change to create unique key.**

- InvoiceNo - changed to match invoice number in AP\_OpenInvoice
- HeaderSeqNo - changed to match sequence number in AP\_InvoiceHistoryHeader

**AP\_InvoiceHistoryTaxSummary- change to create unique key.**

- InvoiceNo - changed to match invoice number in AP\_OpenInvoice
- HeaderSeqNo - changed to match sequence number in AP\_InvoiceHistoryHeader

**AP\_InvoiceHistoryAsset - change to create unique key.**

- InvoiceNo - changed to match invoice number in AP\_OpenInvoice
- HeaderSeqNo - changed to match sequence number in AP\_InvoiceHistoryHeader
- APDivisionNo – convert A/P division
- AccountKey - G/L account conversion
- PurchaseOrderNo - changed to match PO number in PO\_PurchaseOrderHeader or
- PO\_ReceiptHistoryHeader

**AP\_InvoiceHistoryMemoSettings - change to create unique key.**

- InvoiceNo - changed to match invoice number in AP\_OpenInvoice
- HeaderSeqNo - changed to match sequence number in AP\_InvoiceHistoryHeader

**AP\_InvoiceHistoryDetail - increment sequence.**

- InvoiceNo - changed to match invoice number in AP\_OpenInvoice
- HeaderSeqNo - changed to match sequence number in AP\_InvoiceHistoryHeader
- DetailSeqNo - increment sequence
- AccountKey - G/L account conversion
- TransferAPDivisionNo - convert A/P division
- TransferInvoiceNo - changed to match invoice number in AP\_OpenInvoice
- ExtendedDescriptionKey - convert extended description key
- WarehouseCode - convert warehouse code
- POWarehouseCode - convert warehouse code
- SalesOrderNo - changed to match SO number in SO\_SalesOrderHeader or SO\_SalesOrderHistoryHeader

**AP\_RepetitiveInvoiceHeader - change to create unique key.**

- APDivisionNo - convert A/P division
- ReferenceNo - change to create unique key

**AP\_RepetitiveInvoiceDetail - change to create unique key.**

- APDivisionNo - convert A/P division
- ReferenceNo - changed to match reference number in AP\_RepetitiveInvoiceHeader
- AccountKey - G/L account conversion

**AP\_RepetitiveInvoiceMemo - change to create unique key.**

- APDivisionNo - convert A/P division
- ReferenceNo - changed to match reference number in AP\_RepetitiveInvoiceHeader

**AP\_RepetitiveInvoiceTaxDetail - change to create unique key.**

- APDivisionNo - convert A/P division
- ReferenceNo - changed to match reference number in AP\_RepetitiveInvoiceHeader

**AP\_RepetitiveInvoiceTaxSummary - change to create unique key.**

- APDivisionNo - convert A/P division
- ReferenceNo - changed to match reference number in AP\_RepetitiveInvoiceHeader

**AP\_RepetitiveInvMemoSettings - change to create unique key.**

- APDivisionNo - convert A/P division
- ReferenceNo - changed to match reference number in



- AP\_RepetitiveInvoiceHeader

**AP\_Analysis – combined.**

- CompanyCode - Set to consolidation company code
- CurrentNoOfInvs - summed
- CurrentTotalPayables - summed
- CurrentOver30Days - summed
- CurrentOver60Days - summed
- Period1NoOfInvs - summed
- Period1TotalPayables - summed
- Period1Over30Days - summed
- Period1Over60Days - summed
- Period2NoOfInvs - summed
- Period2TotalPayables - summed
- Period2Over30Days - summed
- Period2Over60Days - summed
- Period3NoOfInvs - summed
- Period3TotalPayables - summed
- Period3Over30Days - summed
- Period3Over60Days - summed
- Period4NoOfInvs - summed
- Period4TotalPayables - summed
- Period4Over30Days - summed
- Period4Over60Days - summed
- Period5NoOfInvs - summed
- Period5TotalPayables - summed
- Period5Over30Days - summed
- Period5Over60Days - summed
- Period6NoOfInvs - summed
- Period6TotalPayables - summed
- Period6Over30Days - summed
- Period6Over60Days - summed
- TotalNoOfDaysOld - summed
- TotalOfOriginalInvAmounts - summed
- LastUpdateDate - maximum

**AP\_LastBankUsed – combined.****AP\_SalesTax – combined.**

- APDivisionNo – convert A/P division
- InvoiceNo – changed to match invoice number in AP\_OpenInvoice

- TaxablePurchasesAmt - summed
- NonTaxablePurchasesAmt - summed
- TaxableFreightAmt - summed
- NonTaxableFreightAmt - summed
- TaxAmt - summed
- UseTaxAmt - summed
- TaxableTaxAmt - summed
- ExemptPurchasesAmt - summed
- NonRecoverableAmt - summed

**AP\_TermsCode – combined.**

**AP\_Vendor1099Payments – combined.**

- APDivisionNo – convert A/P division
- BoxAmt – summed

**AP\_VendorContact – combined.**

- APDivisionNo – convert A/P division

**AP\_VendorCustomerLink – combined.**

- ARDivisionNo – convert A/R division
- APDivisionNo – convert A/P division

**AP\_VendorDocumentContacts – combined.**

- APDivisionNo – convert A/P division

**AP\_VendorDocuments – combined.**

- APDivisionNo – convert A/P division

**AP\_VendorMemoSettings - increment sequence.**

- APDivisionNo – convert A/P division
- SeqNo – incremented

**AP\_VendorPDFLog - increment sequence.**

- APDivisionNo – convert A/P division
- PurchaseOrderNo - changed to match PO number in PO\_PurchaseOrderHeader or
- PO\_ReceiptHistoryHeader
- Sequence - incremented

**AP\_VendorPurchasesHistory – combined.**

- APDivisionNo – convert A/P division
- Purchases - summed
- Payments - summed

- DiscountsTaken - summed
- DiscountsLost - summed

**AP\_VendorRemit - combined.**

- APDivisionNo - convert A/P division

**AP\_ACHInterface - combined.****AP\_Audit - increment sequence.**

- APDivisionNo - convert A/P division
- SequenceNo - incremented

**AP\_VendorElectronicPayHistory - combined.**

- APDivisionNo - convert A/P division
- DepositedAmt - summed

***Inventory Management Module*****IM\_Warehouse - combined.**

- WarehouseCode - convert warehouse

**IM\_AliasItem - combined.**

- ARDivisionNo - convert A/R division
- APDivisionNo - convert A/P division

**IM\_ItemCost - combined.**

- WarehouseCode - convert warehouse
- QuantityOnHand - summed
- QuantityCommitted - summed
- ExtendedCost - calculated

**IM\_ItemWarehouse - combined.**

- WarehouseCode - convert warehouse
- QuantityOnHand - summed
- QuantityOnPurchaseOrder - summed
- QuantityOnSalesOrder - summed
- .QuantityOnBackOrder - summed
- QuantityOnWorkOrder - summed
- QuantityRequiredForWO - summed
- AverageCost - recalculated
- QuantityInShipping - summed

**IM\_ProductLine – combined.**

- InventoryAcctKey - G/L account conversion
- CostOfGoodsSoldAcctKey - G/L account conversion
- SalesIncomeAcctKey - G/L account conversion
- ReturnsAcctKey - G/L account conversion
- AdjustmentAcctKey - G/L account conversion
- PurchaseAcctKey - G/L account conversion
- PurchaseOrderVarianceAcctKey - G/L account conversion
- ManufacturingVarianceAcctKey - G/L account conversion
- ScrapAcctKey - G/L account conversion
- RepairsInProgressAcctKey - G/L account conversion
- RepairsClearingAcctKey - G/L account conversion

**IM\_AlternateItem – combined.****IM\_BuyerPlannerCode – combined.****IM\_ItemCustomerHistoryByPeriod – combined.**

- ARDivisionNo – convert A/R division
- QuantitySold - summed
- DollarsSold - summed
- CostOfGoodsSold - summed
- QuantityReturned – summed

**IM\_ItemMemo - increment sequence.**

- SeqNo – incremented

**IM\_ItemMemoSettings - increment sequence.**

- SeqNo – incremented

**IM\_ItemTransactionHistory - increment sequence.**

- WarehouseCode – convert warehouse
- APDivisionNo – convert A/P division
- ARDivisionNo – convert A/R division
- EntryNo - changed to match invoice number in AR\_OpenInvoice if Transaction Code is "SO" SequenceNo – incremented
- InvoiceHistoryHeaderSeqNo- changed to match sequence number in AP\_InvoiceHistoryHeader
- ReceiptHistoryHeaderSeqNo - changed to match Header Sequence number in PO\_ReceiptHistoryHeader
- ReceiptHistoryPurchaseOrderNo - changed to match PO number in PO\_PurchaseOrderHeader or PO\_ReceiptHistoryHeader

**IM\_ItemVendor – combined.**

- APDivisionNo – convert A/P division
- LastReturnPurchaseOrderNo - changed to match PO number in PO\_PurchaseOrderHeader or PO\_ReceiptHistoryHeader
- LastReceiptPurchaseOrderNo - changed to match PO number in PO\_PurchaseOrderHeader or PO\_ReceiptHistoryHeader
- LastReceiptHeaderSeqNo - changed to match Header Sequence number in PO\_ReceiptHistoryHeader

**IM\_ItemVendorHistoryByPeriod – combined.**

- APDivisionNo – convert A/P division
- QuantityReceived - summed
- CostOfGoodsReceived - summed
- QuantityReturned – summed

**IM\_ItemWhseHistoryByPeriod – combined.**

- WarehouseCode – convert warehouse
- QuantitySold – summed
- DollarsSold – summed
- CostOfGoodsSold – summed
- QuantityReturnedCustomer – summed
- QuantityReceived – summed
- CostOfGoodsReceived – summed
- QuantityProduced – summed
- QuantityReturnedVendor – summed
- QuantityIssued – summed
- IssuesCost – summed
- QuantityTransferred – summed
- QuantityTransferredOut – summed
- TransfersCost – summed
- QuantityAdjusted – summed
- AdjustmentsCost – summed
- QuantitySoldAsKits – summed

**IM\_LotSerialTransactionHistory - increment sequence.**

- WarehouseCode – convert warehouse
- APDivisionNo – convert A/P division
- ARDivisionNo – convert A/R division
- EntryNo - changed to match invoice number in AR\_OpenInvoice if Transaction Code is “SO”
- SequenceNo – incremented

- InvoiceHistoryHeaderSeqNo- changed to match sequence number in AP\_InvoiceHistoryHeader
- ReceiptHistoryHeaderSeqNo - changed to match Header Sequence number in PO\_ReceiptHistoryHeader
- ReceiptHistoryPurchaseOrderNo - changed to match PO number in PO\_PurchaseOrderHeader or PO\_ReceiptHistoryHeader

**IM\_PeriodPostingHistory – combined.**

- WarehouseCode – convert warehouse
- BeginningBalQty – summed
- BeginningBalDollarAmt – summed
- BeginningBalExtendedStdCost – summed
- PeriodChangeQty – summed
- PeriodChangeDollarAmt – summed
- PeriodChangeExtendedStdCost – summed

**IM\_PriceCode – combined.**

- ARDivisionNo – convert A/R division

**IM\_SalesPromotion – combined.**

**IM\_WarrantyCode – combined.**

**IM\_Audit - increment sequence.**

- SequenceNo – incremented

## ***Common Information Module***

**CI\_Item – combined.**

- ExtendedDescriptionKey - convert extended description key
- SalesAcctKey - G/L account conversion
- CostOfGoodsSoldAcctKey - G/L account conversion
- InventoryAcctKey - G/L account conversion
- PurchaseAcctKey - G/L account conversion
- ManufacturingCostAcctKey - G/L account conversion
- DefaultWarehouseCode - convert warehouse
- PrimaryAPDivisionNo - convert A/P division
- TotalQuantityOnHand – summed
- AverageUnitCost – recalculated
- TotalInventoryValue - summed
- LastSoldDate - maximum
- LastReceiptDate maximum

**CI\_ExtendedDescription - increment sequence.**

- ExtendedDescriptionKey - increment sequence.

**CI\_ItemHistoryByPeriod – combined.**

- QuantitySold – summed
- DollarsSold – summed
- CostOfGoodsSold – summed
- QuantityReturnedCustomer – summed
- QuantityReceived – summed
- ReceivedCost – summed
- QuantityReturnedVendor – summed
- QuantityIssued – summed
- IssuesCost – summed

**CI\_ItemTransactionHistory - increment sequence.**

- APDivisionNo – convert A/P division
- ARDivisionNo – convert A/R division
- EntryNo - changed to match invoice number in AR\_OpenInvoice
- SequenceNo – incremented

**CI\_UnitOfMeasure – combined.*****Job Cost Module*****JC1 - J/C Job Master File – combined.**

- DivisionNumber - convert A/R division
- JTDSalesTax – summed
- TotalJobUnits – summed
- OriginalEstimate – summed
- OriginalContract – summed
- RevisedContract – summed
- PTDActualCost – summed
- YTDActualCosts – summed
- JTDActualCosts – summed
- PTDInvoiceBilled – summed
- YTDInvoiceBilled – summed
- JTDInvoiceBilled – summed
- PTDPaymentReceived – summed
- YTDPaymentReceived – summed
- JTDPaymentReceived – summed
- RetentionBalance – summed

- DeferredRevenue – summed
- UnbilledCost – summed
- FutureActualCosts – summed
- FutureInvoiceBilled – summed
- FuturePaymentReceived – summed

**JC2 - J/C Job Cost Detail File – combined.**

- DivisionNumber - convert A/P division
- LiensAmount – summed
- OriginalEstimatedCost – summed
- RevisedEstimatedCost – summed
- PTDCost – summed
- YTDCost – summed
- JTDCost – summed
- UnbilledCost – summed
- OriginalEstimatedUnits – summed
- RevisedEstimatedUnits – summed
- PTDUnits – summed
- YTDUnits – summed
- JTDUnits – summed
- UnbilledUnits – summed
- FutureCost – summed
- FutureUnits – summed

**JC3 - J/C Job Cost Transaction Detail File - increment sequence.**

- DivisionNumber - convert A/P division
- SeqNo - incremented

**JC\_H1 - J/C Job History Master File – combined.**

- DivisionNumber - convert A/R division
- JTDSalesTax – summed
- TotalJobUnits – summed
- OriginalEstimate – summed
- RevisedEstimate – summed
- OriginalContract – summed
- RevisedContract – summed
- PTDActualCost – summed
- YTDActualCosts – summed
- JTDActualCosts – summed
- PTDInvoiceBilled – summed
- YTDInvoiceBilled – summed
- JTDInvoiceBilled – summed



- PTDPaymentReceived – summed
- YTDPaymentReceived – summed
- JTDPaymentReceived – summed
- RetentionBalance – summed
- DeferredRevenue – summed
- UnbilledCost – summed
- FutureActualCosts – summed
- FutureInvoiceBilled – summed
- FuturePaymentReceived – summed

**JC\_H2 - J/C Job Cost History Detail File– combined.**

- DivisionNumber - convert A/P division
- LiensAmount – summed
- OriginalEstimatedCost – summed
- RevisedEstimatedCost – summed
- PTDCost – summed
- YTDCost – summed
- JTDCost – summed
- UnbilledCost – summed
- OriginalEstimatedUnits – summed
- RevisedEstimatedUnits – summed
- PTDUnits – summed
- YTDUnits – summed
- JTDUnits – summed
- UnbilledUnits – summed
- FutureCost – summed
- FutureUnits – summed

**JC\_H3 - J/C Job History Transaction Detail File - increment sequence.**

- DivisionNumber - convert A/P division
- SeqNo – incremented

**JCA - J/C Job Type Master File – combined.**

- GLRevenueAcctNumber - G/L account conversion
- WipAcct1 - G/L account conversion
- CosAcct1 - G/L account conversion
- WipAcct2 - G/L account conversion
- CosAcct2 - G/L account conversion
- WipAcct3 - G/L account conversion
- CosAcct3 - G/L account conversion
- WipAcct4 - G/L account conversion
- CosAcct4 - G/L account conversion

- WipAcct5 - G/L account conversion
- CosAcct5 - G/L account conversion
- WipAcct6 - G/L account conversion
- CosAcct6 - G/L account conversion
- WipAcct7 - G/L account conversion
- CosAcct7 - G/L account conversion
- WipAcct8 - G/L account conversion
- CosAcct8 - G/L account conversion
- WipAcct9 - G/L account conversion
- CosAcct9 - G/L account conversion
- WipAcct10 - G/L account conversion
- CosAcct10 - G/L account conversion
- WipAcct11 - G/L account conversion
- CosAcct11 - G/L account conversion
- WipAcct12 - G/L account conversion
- CosAcct12 - G/L account conversion
- DeferredRevenueAcct - G/L account conversion

**JCB - J/C Burden/Overhead Master File– combined.**

**JCC - J/C Cost Code Master File – combined.**

- GLCostAcct - G/L account conversion

**JC\_90 - UDF J/C Job Masterfile– combined.**

**JC\_91 - UDF J/C Job Detail File– combined.**

### ***Purchase Order Module***

**PO\_PurchaseOrderHeader - change to create unique key.**

- PurchaseOrderNo - changed to create unique key
- MasterRepeatingOrderNo - changed to match PO number in PO\_PurchaseOrderHeader or PO\_ReceiptHistoryHeader
- APDivisionNo – convert A/P division
- WarehouseCode – convert warehouse
- ARDivisionNo – convert A/R division
- SalesOrderNo - changed to match SO number in SO\_SalesOrderHeader or SO\_SalesOrderHistoryHeader
- LastInvoiceNo – changed to match invoice number in AP\_OpenInvoice
- LastPurchaseOrderNo - changed to match PO number in PO\_PurchaseOrderHeader or PO\_ReceiptHistoryHeader

- D531ServiceOrderNo – changed to match Service Order number in SM\_531ServiceOrderHeader

**PO\_PurchaseOrderMemo- change to create unique key.**

- PurchaseOrderNo - changed to match PO number in PO\_PurchaseOrderHeader

**PO\_PurchaseOrderTaxDetail - change to create unique key.**

- PurchaseOrderNo - changed to match PO number in PO\_PurchaseOrderHeader

**PO\_PurchaseOrderTaxSummary - change to create unique key.**

- PurchaseOrderNo - changed to match PO number in PO\_PurchaseOrderHeader

**PO\_PurchaseOrderDetail - change to create unique key.**

- PurchaseOrderNo - changed to match PO number in PO\_PurchaseOrderHeader
- ExtendedDescriptionKey - convert extended description key
- PurchasesAcctKey - G/L account conversion
- WarehouseCode – convert warehouse
- SalesOrderNo - changed to match SO number in SO\_SalesOrderHeader or SO\_SalesOrderHistoryHeader
- D531ServiceOrderNo – changed to match Service Order number in SM\_531ServiceOrderHeader

**PO\_ReceiptHistoryHeader – change to create unique key.**

- PurchaseOrderNo - changed to match PO number in PO\_PurchaseOrderHeader or change to create unique key
- APDivisionNo – convert A/P division
- WarehouseCode – convert warehouse
- ARDivisionNo – convert A/R division
- InvoiceNo – changed to match invoice number in AP\_OpenInvoice
- HeaderSeqNo – incremented if PurchaseOrderNo is blank

**PO\_ReceiptHistoryMemo - change to create unique key.**

- PurchaseOrderNo - changed to match PO number in PO\_PurchaseOrderHeader or PO\_ReceiptHistoryHeader
- HeaderSeqNo - changed to match Header Sequence number in PO\_ReceiptHistoryHeader

**PO\_ReceiptHistoryTaxSummary - change to create unique key.**

- PurchaseOrderNo - changed to match PO number in PO\_PurchaseOrderHeader or PO\_ReceiptHistoryHeader
- HeaderSeqNo - changed to match Header Sequence number in PO\_ReceiptHistoryHeader

**PO\_ReceiptHistoryDetail - change to create unique key.**

- PurchaseOrderNo - changed to match PO number in PO\_PurchaseOrderHeader or PO\_ReceiptHistoryHeader
- HeaderSeqNo - changed to match Header Sequence number in PO\_ReceiptHistoryHeader
- ExtendedDescriptionKey - convert extended description key
- WarehouseCode - convert warehouse
- OrderWarehouseCode - convert warehouse
- ExpenseAcctKey - G/L account conversion
- SalesOrderNo - changed to match SO number in SO\_SalesOrderHeader or SO\_SalesOrderHistoryHeader
- D531ServiceOrderNo - changed to match Service Order number in SM\_531ServiceOrderHeader

**PO\_LandedCostHistory - change to create unique key.**

- PurchaseOrderNo - changed to match PO number in PO\_PurchaseOrderHeader or PO\_ReceiptHistoryHeader

**PO\_LandedCostType - combined.**

- CostExpenseAcctKey - G/L account conversion

**PO\_OpenOrderDetailByItem - change to create unique key.**

- PurchaseOrderNo - changed to match PO number in PO\_PurchaseOrderHeader

**PO\_PurchaseOrderDefaults - combined.**

- WarehouseCode - convert warehouse

**PO\_PurchaseOrderMemoSettings - change to create unique key.**

- PurchaseOrderNo - changed to match PO number in PO\_PurchaseOrderHeader

**PO\_PurchaseOrderPrint - change to create unique key.**

- PurchaseOrderNo - changed to match PO number in PO\_PurchaseOrderHeader

**PO\_PurchaseOrderRecap - change to create unique key.**

- PurchaseOrderNo - changed to match PO number in PO\_PurchaseOrderHeader
- APDivisionNo - convert A/P division
- LastInvoiceNo - changed to match invoice number in AP\_OpenInvoice
- LastPurchaseOrderNo - changed to match PO number in PO\_PurchaseOrderHeader or PO\_ReceiptHistoryHeader

**PO\_PurchasesHistory - combined.**

- APDivisionNo - convert A/P division

- WarehouseCode – convert warehouse
- QuantityPurchased - summed
- DollarsPurchased – summed

**PO\_ReceiptDefaults – combined.**

- WarehouseCode – convert warehouse

**PO\_ReceiptHistoryMemoSettings - change to create unique key.**

- PurchaseOrderNo - changed to match PO number in PO\_PurchaseOrderHeader or PO\_ReceiptHistoryHeader
- HeaderSeqNo - changed to match Header Sequence number in PO\_ReceiptHistoryHeader

**PO\_ReceiptHistoryLotSerial - change to create unique key.**

- PurchaseOrderNo - changed to match PO number in PO\_PurchaseOrderHeader or PO\_ReceiptHistoryHeader
- HeaderSeqNo - changed to match Header Sequence number in PO\_ReceiptHistoryHeader

**PO\_ShipToAddress – combined.****PO\_VendorPriceLevel – combined.**

- APDivisionNo – convert A/P division

**PO\_VendorPurchaseAddress– combined.**

- APDivisionNo – convert A/P division

## ***Sales Order Module***

**SO\_Options – use Consolidated Company SO\_Options table.**

- EnableLotSerialDist – set to “Y” in the Consolidated Company if it is “Y” in any Source Company
- RequireFullyDistributedLines – set to “N” in the Consolidated Company if EnableLotSerialDist is set to “Y” in the Consolidated Company and
- RequireFullyDistributedLines is “N” in any Source Company

**SO\_SalesOrderHeader - change to create unique key.**

- SalesOrderNo - changed to create unique key
- MasterRepeatingOrderNo - changed to match SO number in SO\_SalesOrderHeader or SO\_SalesOrderHistoryHeader
- ARDivisionNo – convert A/R division
- WarehouseCode – convert warehouse
- SalespersonNo – convert salesperson
- SalespersonNo2 - convert salesperson

- SalespersonDivisionNo3 - convert A/R division
- SalespersonNo3 - convert salesperson
- SalespersonDivisionNo4 - convert A/R division
- SalespersonNo4 - convert salesperson
- SalespersonDivisionNo5 - convert A/R division
- SalespersonNo5 - convert salesperson
- BillToDivisionNo - convert A/R division
- D531ServiceOrderNo - changed to match Service Order number in SM\_531ServiceOrderHeader
- D531HeaderSeqNo - changed to match Header Sequence number in SM\_531ServiceOrderHistHeader

**SO\_SalesOrderMemo - change to create unique key.**

- SalesOrderNo - changed to match SO number in SO\_SalesOrderHeader

**SO\_SalesOrderTaxDetail - change to create unique key.**

- SalesOrderNo - changed to match SO number in SO\_SalesOrderHeader

**SO\_SalesOrderTaxSummary - change to create unique key.**

- SalesOrderNo - changed to match SO number in SO\_SalesOrderHeader

**SO\_SalesOrderDetail - change to create unique key.**

- SalesOrderNo - changed to match SO number in SO\_SalesOrderHeader
- ExtendedDescriptionKey - convert extended description key
- WarehouseCode - convert warehouse
- CostOfGoodsSoldAcctKey - G/L account conversion
- SalesAcctKey - G/L account conversion
- APDivisionNo - convert A/P division
- PurchaseOrderNo - changed to match PO number in PO\_PurchaseOrderHeader or PO\_ReceiptHistoryHeader
- D531ServiceOrderNo - changed to match Service Order number in SM\_531ServiceOrderHeader
- D531HeaderSeqNo - changed to match Header Sequence number in SM\_531ServiceOrderHistHeader

**SO\_SalesOrderHistoryHeader - change to create unique key.**

- SalesOrderNo - changed to match SO number in SO\_SalesOrderHeader or to create unique key
- MasterRepeatingOrderNo - changed to match SO number in SO\_SalesOrderHeader or SO\_SalesOrderHistoryHeader
- ARDivisionNo - convert A/R division
- BillToDivisionNo - convert A/R division

- WarehouseCode - convert warehouse
- LastInvoiceNo - changed to match invoice number in AR\_OpenInvoice
- SalespersonDivisionNo - convert A/R division
- SalespersonNo - convert salesperson
- SalespersonNo2 - convert salesperson
- SalespersonDivisionNo3 - convert A/R division
- SalespersonNo3 - convert salesperson
- SalespersonDivisionNo4 - convert A/R division
- SalespersonNo4 - convert salesperson
- SalespersonDivisionNo5 - convert A/R division
- SalespersonNo5 - convert salesperson
- D531ServiceOrderNo - changed to match Service Order number in SM\_531ServiceOrderHeader
- D531HeaderSeqNo - changed to match Header Sequence number in SM\_531ServiceOrderHistHeader

**SO\_SalesOrderHistoryDetail - change to create unique key.**

- SalesOrderNo - changed to match SO number in SO\_SalesOrderHeader or SO\_SalesOrderHistoryHeader
- ExtendedDescriptionKey - convert extended description key
- WarehouseCode - convert warehouse
- CostOfGoodsSoldAcctKey - G/L account conversion
- SalesAcctKey - G/L account conversion
- APDivisionNo - convert A/P division
- PurchaseOrderNo - changed to match PO number in PO\_PurchaseOrderHeader or PO\_ReceiptHistoryHeader
- D531ServiceOrderNo - changed to match Service Order number in SM\_531ServiceOrderHeader
- D531HeaderSeqNo - changed to match Header Sequence number in SM\_531ServiceOrderHistHeader

**SO\_SalesOrderHistoryMemo - change to create unique key.**

- SalesOrderNo - changed to match SO number in SO\_SalesOrderHeader or SO\_SalesOrderHistoryHeader

**SO\_SalesOrderHistoryTaxDetail - change to create unique key.**

- SalesOrderNo - changed to match SO number in SO\_SalesOrderHeader or SO\_SalesOrderHistoryHeader

**SO\_SalesOrderHistoryTaxSummary - change to create unique key.**

- SalesOrderNo - changed to match SO number in SO\_SalesOrderHeader or SO\_SalesOrderHistoryHeader

**SO\_RecapByProductLineWhse – combined.**

- WarehouseCode – convert warehouse
- QuantityShipped - summed
- QuantityReturned - summed
- DollarsSold - summed
- CostOfGoodsSold – summed

**SO\_RecapByDivision – combined.**

- ARDivisionNo – convert A/R division
- QuantityShipped - summed
- QuantityReturned - summed
- DollarsSold - summed
- CostOfGoodsSold – summed

**SO\_RecapByWarehouse– combined.**

- WarehouseCode – convert warehouse
- QuantityShipped - summed
- QuantityReturned – summed
- DollarsSold - summed
- CostOfGoodsSold – summed

**SO\_ShipToAddress – combined.**

- ARDivisionNo – convert A/R division
- SalespersonDivisionNo - convert A/R division
- SalespersonNo – convert salesperson
- WarehouseCode – convert warehouse

**SO\_ARInvoiceHistoryLink – change to create unique key.**

- SalesOrderNo - changed to match SO number in SO\_SalesOrderHeader or SO\_SalesOrderHistoryHeader
- InvoiceNo - changed to match invoice number in AR\_OpenInvoice
- InvoiceHistoryHeaderSeqNo - changed to match invoice sequence number in AR\_InvoiceHistoryHeader

**SO\_CancelReasonCode – combined.****SO\_InvoiceDefaults – combined.**

- WarehouseCode – convert warehouse

**SO\_InvoiceHistoryLink – change to create unique key.**

- SalesOrderNo - changed to match SO number in SO\_SalesOrderHeader or SO\_SalesOrderHistoryHeader
- InvoiceNo - changed to match invoice number in AR\_OpenInvoice



- InvoiceHistoryHeaderSeqNo - changed to match invoice sequence number in AR\_InvoiceHistoryHeader

**SO\_LastPurchaseHistory – combined.**

- ARDivisionNo – convert A/R division

**SO\_LotSerialHistory – combined.**

- ARDivisionNo – convert A/R division
- InvoiceNo - changed to match invoice number in AR\_OpenInvoice
- BillToDivisionNo - convert A/R division
- QuantityShipped - summed

**SO\_OpenOrderDetailByItem – change to create unique key.**

- SalesOrderNo - changed to match SO number in SO\_SalesOrderHeader

**SO\_PurchaseCtrlByCustByItem – combined.**

- ARDivisionNo – convert A/R division

**SO\_PurchaseCtrlByCustByProdLn – combined.**

- ARDivisionNo – convert A/R division

**SO\_PurchaseCtrlByStateByItem – combined.****SO\_PurchaseCtrlByStateByProdLn – combined.****SO\_SalesHistory – combined.**

- ARDivisionNo – convert A/R division
- WarehouseCode – convert warehouse
- DollarsSold - summed
- CostOfGoodsSold - summed
- QuantityShipped - summed
- QuantityReturned – summed

**SO\_SalesOrderDefaults – combined.**

- WarehouseCode – convert warehouse

**SO\_SalesOrderDropShip – change to create unique key.**

- APDivisionNo – convert A/P division
- SalesOrderNo - changed to match SO number in SO\_SalesOrderHeader

**SO\_SalesOrderHistMemoSettings – change to create unique key.**

- SalesOrderNo - changed to match SO number in SO\_SalesOrderHeader

**SO\_SalesOrderMemoSettings – change to create unique key.**

- SalesOrderNo - changed to match SO number in SO\_SalesOrderHeader

**SO\_SalesOrderPrint – change to create unique key.**

- SalesOrderNo - changed to match SO number in SO\_SalesOrderHeader
- WarehouseCode – convert warehouse
- InvoiceNo – not changed

**SO\_SalesOrderRecap – change to create unique key.**

- SalesOrderNo - changed to match SO number in SO\_SalesOrderHeader
- ARDivisionNo – convert A/R division
- BillToDivisionNo – convert A/R division

**SO\_ShipperID – combined.****SO\_ShippingRateDetail – combined.****SO\_ShippingRateHeader – combined.****SO\_SalesOrderTierDistribution - change to create unique key.**

- SalesOrderNo - changed to match SO number in SO\_SalesOrderHeader
- WarehouseCode – convert warehouse

***Service Center Module*****SM\_Options – use Consolidated Company SM\_Options table.**

- AutoTransferRefurbishedItems – set to “N” in the Consolidated Company if it is “N” in any Source Company
- EnableLotSerialDist – set to “Y” in the Consolidated Company if it is “Y” in any Source Company
- RequireFullyDistributedLines – set to “N” in the Consolidated Company if EnableLotSerialDist is set to “Y” in the Consolidated Company and
- RequireFullyDistributedLines is “N” in any Source Company

**SM\_531ServiceOrderHeader – change to create unique key.**

- ServiceOrderNo – changed to create unique key
- OutsideDivisionNo – convert A/P division
- ARDivisionNo – convert A/R division
- BillToDivisionNo – convert A/R division
- WarehouseCode – convert warehouse
- SalespersonDivisionNo - convert A/R division

- SalespersonNo – convert salesperson
- SalespersonNo2 - convert salesperson
- SalespersonDivisionNo3 - convert A/R division
- SalespersonNo3 - convert salesperson
- SalespersonDivisionNo4 - convert A/R division
- SalespersonNo4 - convert salesperson
- SalespersonDivisionNo5 - convert A/R division
- SalespersonNo5 - convert salesperson
- LoanerSalesOrderNo - changed to match SO number in SO\_SalesOrderHeader or SO\_SalesOrderHistoryHeader
- HistorySeqNo – changed to match sequence number in SM\_531ServiceOrderHistHeader

**SM\_531ServiceOrderMemo – change to create unique key.**

- ServiceOrderNo – changed to match Service Order number in SM\_531ServiceOrderHeader

**SM\_531ServiceOrderMemoSettings – change to create unique key.**

- ServiceOrderNo – changed to match Service Order number in SM\_531ServiceOrderHeader

**SM\_531ServiceOrderTaxDetail – change to create unique key.**

- ServiceOrderNo – changed to match Service Order number in SM\_531ServiceOrderHeader

**SM\_531ServiceOrderTaxSummary – change to create unique key.**

- ServiceOrderNo – changed to match Service Order number in SM\_531ServiceOrderHeader

**SM\_531ServiceItemEntry – change to create unique key.**

- ServiceOrderNo – changed to match Service Order number in SM\_531ServiceOrderHeader
- EndUserCurrentDivisionNo - convert A/R division
- OutsideServiceDivisionNo – convert A/P division
- OriginalInvoice - changed to match invoice number in AR\_OpenInvoice
- OriginalInvoiceHistSeqNo - changed to match invoice sequence number in AR\_InvoiceHistoryHeader
- SalesOrderNoForLoaner - changed to match SO number in SO\_SalesOrderHeader or SO\_SalesOrderHistoryHeader
- InvoiceNo - changed to match invoice number in AR\_OpenInvoice
- InvoiceHistorySeqNo - changed to match invoice sequence number in AR\_InvoiceHistoryHeader
- ReturnWarehouseCode - convert warehouse

- ApplyToInvoice - changed to match invoice number in AR\_OpenInvoice
- RefurbishSourceWarehouseCode - convert warehouse
- RefurbishTargetWarehouseCode - convert warehouse

**SM\_531ServiceOrderDetail – change to create unique key.**

- ServiceOrderNo – changed to match Service Order number in SM\_531ServiceOrderHeader
- ExtendedDescriptionKey - convert extended description key
- WarehouseCode – convert warehouse
- CostOfGoodsSoldAcctKey - G/L account conversion
- SalesAcctKey - G/L account conversion
- InvoiceNo - changed to match invoice number in AR\_OpenInvoice
- InvoiceHistorySeqNo - changed to match invoice sequence number in AR\_InvoiceHistoryHeader
- APDivisionNo – convert A/P division
- PurchaseOrderNo - changed to match PO number in PO\_PurchaseOrderHeader or PO\_ReceiptHistoryHeader

**SM\_531ServiceOrderHistHeader - change to create unique key and increment sequence.**

- ServiceOrderNo – changed to match Service Order number in SM\_531ServiceOrderHeader
- HeaderSeqNo – incremented
- OutsideDivisionNo – convert A/P division
- ARDivisionNo – convert A/R division
- BillToDivisionNo – convert A/R division
- WarehouseCode – convert warehouse
- SalespersonDivisionNo - convert A/R division
- SalespersonNo – convert salesperson
- SalespersonNo2 - convert salesperson
- SalespersonDivisionNo3 - convert A/R division
- SalespersonNo3 - convert salesperson
- SalespersonDivisionNo4 - convert A/R division
- SalespersonNo4 - convert salesperson
- SalespersonDivisionNo5 - convert A/R division
- SalespersonNo5 - convert salesperson
- LoanerSalesOrderNo - changed to match SO number in SO\_SalesOrderHeader or SO\_SalesOrderHistoryHeader
- HistorySeqNo – changed to match HeaderSeqNo

**SM\_531ServiceOrderHistMemo - change to create unique key.**

- ServiceOrderNo – changed to match Service Order number in SM\_531ServiceOrderHeader
- HeaderSeqNo – changed to match Header Sequence number in SM\_531ServiceOrderHistHeader

**SM\_531SvcOrderHistMemoSettings - change to create unique key.**

- ServiceOrderNo – changed to match Service Order number in SM\_531ServiceOrderHeader
- HeaderSeqNo – changed to match Header Sequence number in SM\_531ServiceOrderHistHeader

**SM\_531SvcOrderHistTaxDetail - change to create unique key.**

- ServiceOrderNo – changed to match Service Order number in SM\_531ServiceOrderHeader
- ServiceOrderSeqNo - changed to match Header Sequence number in SM\_531ServiceOrderHistHeader

**SM\_531SvcOrderHistTaxSummary - change to create unique key.**

- ServiceOrderNo – changed to match Service Order number in SM\_531ServiceOrderHeader
- ServiceOrderSeqNo changed to match Header Sequence number in SM\_531ServiceOrderHistHeader

**SM\_531ServiceItemEntryHistory - change to create unique key.**

- ServiceOrderNo – changed to match Service Order number in SM\_531ServiceOrderHeader
- HeaderSeqNo – changed to match Header Sequence number in SM\_531ServiceOrderHistHeader
- EndUserCurrentDivisionNo - convert A/R division
- OutsideServiceDivisionNo – convert A/P division
- OriginalInvoice - changed to match invoice number in AR\_OpenInvoice
- OriginalInvoiceHistSeqNo - changed to match invoice sequence number in AR\_InvoiceHistoryHeader
- SalesOrderNoForLoaner - changed to match SO number in SO\_SalesOrderHeader or SO\_SalesOrderHistoryHeader
- InvoiceNo - changed to match invoice number in AR\_OpenInvoice
- InvoiceHistorySeqNo - changed to match invoice sequence number in AR\_InvoiceHistoryHeader
- ReturnWarehouseCode - convert warehouse
- ApplyToInvoice - changed to match invoice number in AR\_OpenInvoice
- RefurbishSourceWarehouseCode - convert warehouse
- RefurbishTargetWarehouseCode - convert warehouse

**SM\_531ServiceOrderHistDetail - change to create unique key.**

- ServiceOrderNo – changed to match Service Order number in SM\_531ServiceOrderHeader
- HeaderSeqNo – changed to match Header Sequence number in SM\_531ServiceOrderHistHeader
- ExtendedDescriptionKey - convert extended description key
- WarehouseCode – convert warehouse
- CostOfGoodsSoldAcctKey - G/L account conversion
- SalesAcctKey - G/L account conversion
- InvoiceNo - changed to match invoice number in AR\_OpenInvoice
- InvoiceHistorySeqNo - changed to match invoice sequence number in AR\_InvoiceHistoryHeader
- APDivisionNo – convert A/P division
- PurchaseOrderNo - changed to match PO number in PO\_PurchaseOrderHeader or PO\_ReceiptHistoryHeader

**SM\_531AutoGeneratePODefaults – combined.****SM\_531ComplaintCode – combined.****SM\_531DemoLoaner – - change to create unique key and combine.**

- InvoiceNo - changed to match invoice number in AR\_OpenInvoice
- InvoiceHistorySeqNo – changed to match invoice sequence number in AR\_InvoiceHistoryHeader
- WarehouseCode – convert warehouse
- ARDivisionNo – convert A/R division
- ServiceOrderNo – changed to match Service Order number in SM\_531ServiceOrderHeader
- SvcOrderHistHeaderSeqNo - changed to match header history number in SM\_531ServiceOrderHeader
- SalesOrderNo - changed to match SO number in SO\_SalesOrderHeader or SO\_SalesOrderHistoryHeader
- QuantityShipped - summed
- QuantityReturned – summed

**SM\_531DemoLoanerHistory – - change to create unique key and combine.**

- InvoiceNo - changed to match invoice number in AR\_OpenInvoice
- InvoiceHistorySeqNo – changed to match invoice sequence number in AR\_InvoiceHistoryHeader
- WarehouseCode – convert warehouse
- ARDivisionNo – convert A/R division
- ServiceOrderNo – changed to match Service Order number in

- SM\_531ServiceOrderHeader
- SvcOrderHistHeaderSeqNo - changed to match header history number in SM\_531ServiceOrderHeader
- SalesOrderNo - changed to match SO number in SO\_SalesOrderHeader or SO\_SalesOrderHistoryHeader
- QuantityShipped - summed
- QuantityReturned - summed

**SM\_531FailureReason - combined.**

**SM\_531GroupCode - combined.**

**SM\_531GroupCodeCustomer - combined.**

- ARDivisionNo - convert A/R division

**SM\_531GroupCodeParts - combined.**

**SM\_531OwnerHistory - combined.**

- OldDivisionNo - convert A/R division
- OldCurrentDivisionNo - convert A/R division

**SM\_531QuickPrintDefaults - combined.**

**SM\_531ServiceItem - combined.**

- WarehouseCode - convert warehouse
- SoldToDivisionNo - convert A/R division
- EndUserDivisionNo - convert A/R division
- OriginalInvoice - changed to match invoice number in AR\_OpenInvoice
- OriginalInvoiceHistSeqNo - changed to match invoice sequence number in AR\_InvoiceHistoryHeader
- SalespersonDivisionNo - convert A/R division
- SalespersonNo - convert salesperson
- APDivisionNo - convert A/P division
- PurchaseOrderNo - changed to match PO number in PO\_PurchaseOrderHeader or PO\_ReceiptHistoryHeader
- NumberOfTimesServiced - summed
- TotalWarrantyHours - summed
- TotalWarrantyLaborCost - summed
- TotalBillableHours - summed
- TotalServiceLaborCost - summed
- TotalServiceLaborSales - summed

**SM\_531ServiceItemMemo - increment sequence.**

- SeqNo – incremented

**SM\_531ServiceItemMemoSettings - increment sequence.**

- SeqNo – incremented

**SM\_531ServiceItemSerialHistory - increment sequence.**

- SeqNo - incremented

**SM\_531ServiceItemStatusLog - change to create unique key.**

- ServiceOrderNo – changed to match Service Order number in SM\_531ServiceOrderHeader
- OutsideServiceDivisionNo – convert A/P division

**SM\_531ServiceItemStatusLog - change to create unique key.**

- ServiceOrderNo – changed to match Service Order number in SM\_531ServiceOrderHeader
- ServiceOrderSeqNo – changed to match Header Sequence number in SM\_531ServiceOrderHistHeader
- OutsideServiceDivisionNo – convert A/P division

**SM\_531ServiceOrderDefaults – combined.**

- WarehouseCode – convert warehouse

**SM\_531ServiceOrderPrint - change to create unique key.**

- ServiceOrderNo – changed to match Service Order number in SM\_531ServiceOrderHeader
- WarehouseCode – convert warehouse
- InvoiceNo – will not be changed

**SM\_531ServiceOrderUserLog - change to create unique key.**

- ServiceOrderNo – changed to match Service Order number in SM\_531ServiceOrderHeader

**SM\_531ServiceOrderUserLogHist - change to create unique key.**

- ServiceOrderNo – changed to match Service Order number in SM\_531ServiceOrderHeader
- ServiceOrderSeqNo – changed to match Header Sequence number in SM\_531ServiceOrderHistHeader

**SM\_531ServiceTechnician– combined.**

- LaborSalesAcctKey - G/L account conversion
- WarrantyLaborAcctKey - G/L account conversion
- ServiceLaborAcctKey - G/L account conversion



- PayrollLaborOffsetAcctKey - G/L account conversion
- SalespersonDivisionNo - convert A/R division
- SalespersonNo - convert salesperson
- WarehouseCode - convert warehouse

**SM\_531ServiceTechHistory - combined.**

- WarrantyHours - summed
- NonWarrantyHours - summed
- WarrantyLaborCost - summed
- NonWarrantyLaborCost - summed
- LaborSales - summed

**SM\_531StatusCode - combined.**

- NextInvoiceNo - will not be changed

**SM\_531SvcTierDistribution - change to create unique key.**

- ServiceOrderNo - changed to match Service Order number in SM\_531ServiceOrderHeader
- WarehouseCode - convert warehouse

**SM\_531TimeTransactions - change to create unique key.**

- TransactionId - changed to create unique key
- ServiceOrderNo - changed to match Service Order number in SM\_531ServiceOrderHeader

**SM\_531TimeTransHistory - change to create unique key.**

- TransactionId - change to match Transaction ID in SM\_531TimeTransactions or create unique key
- ServiceOrderNo - changed to match Service Order number in SM\_531ServiceOrderHeader
- ServiceOrderHistorySeqNo - changed to match Header Sequence number in SM\_531ServiceOrderHistHeader

**SM\_531WarrantyCode - combined.**

**SM\_531WarrantyPricing - combined.**

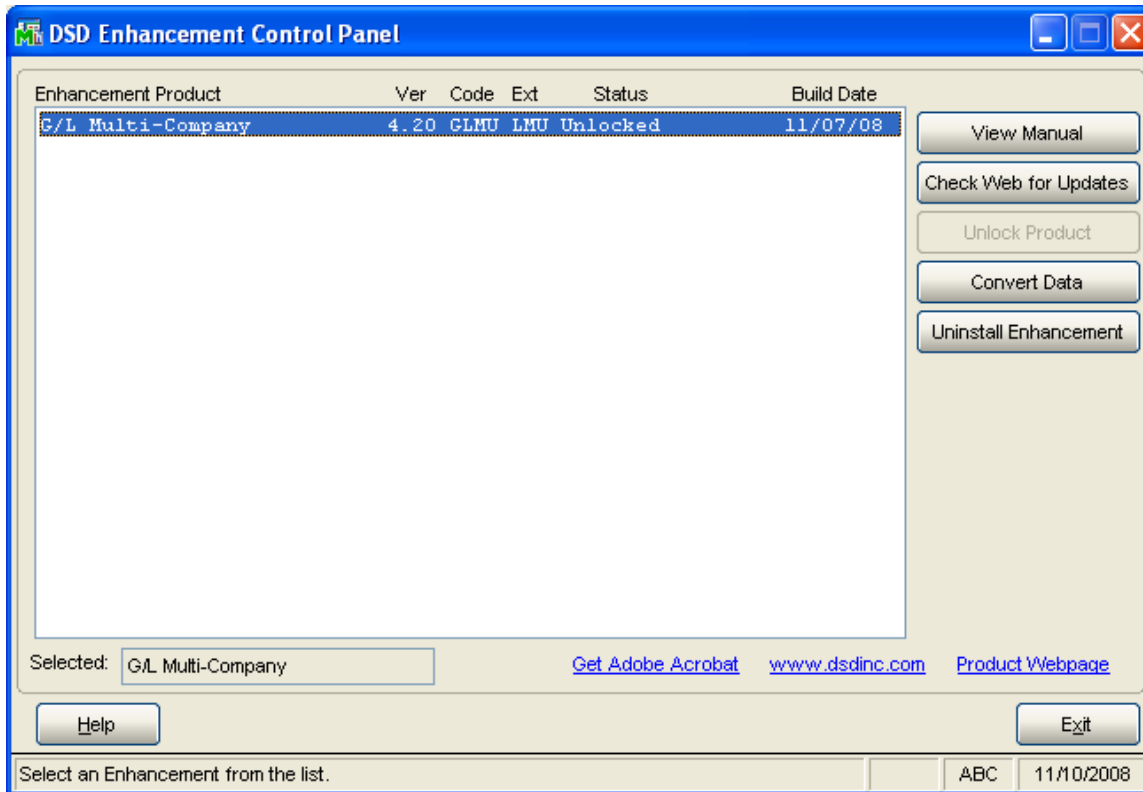
**SM\_531WarrantyReplacement - change to create unique key or increment sequence.**

- SalesOrderNo - changed to match SO number in SO\_SalesOrderHeader or SO\_SalesOrderHistoryHeader
- ServiceOrderNo - changed to match Service Order number in SM\_531ServiceOrderHeader

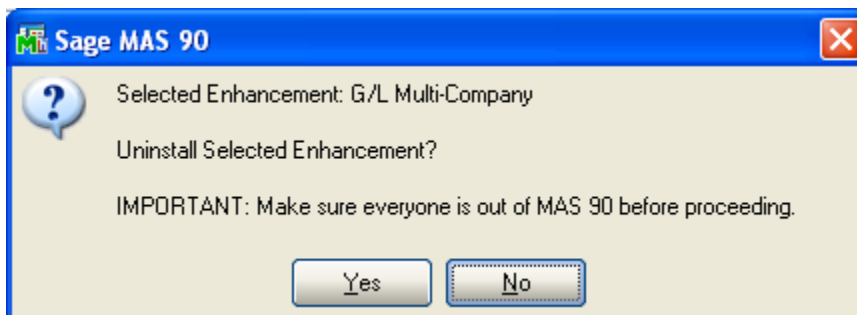
- HeaderSeqNo – changed to match Header Sequence number in SM\_531ServiceOrderHistHeader
- InvoiceNo - changed to match invoice number in AR\_OpenInvoice
- InvoiceHistorySeqNo – changed to match Header Sequence number in SM\_531ServiceOrderHistHeader
- SalesOrderLineKey – incremented if SalesOrderNo is not a real sales order number.

## Section E: Uninstall DSD Enhancements

A DSD Enhancements Uninstall Utility has been provided for the purposes of removing DSD Enhancements from your Sage 100 System. This utility may be accessed from the **DSD Enhancement Control Panel** menu option on the **Library Master / Utilities** menu.

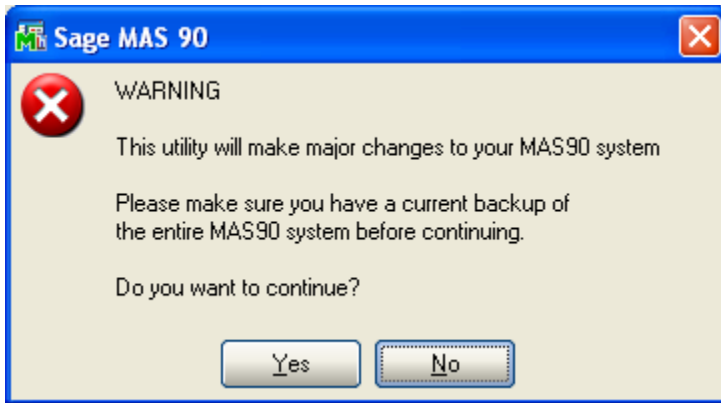


When accessing the **DSD Utility Suite**, select the enhancement that you wish to Uninstall, and then select the **Uninstall Enhancement** button. The following message box will appear:



Select **No** to exit the Uninstall Process.  
Select **Yes** to continue with the Uninstall Process.

The following message box will appear, to remind you that a complete backup of your entire SAGE 100 system should be completed prior to uninstalling a DSD product.

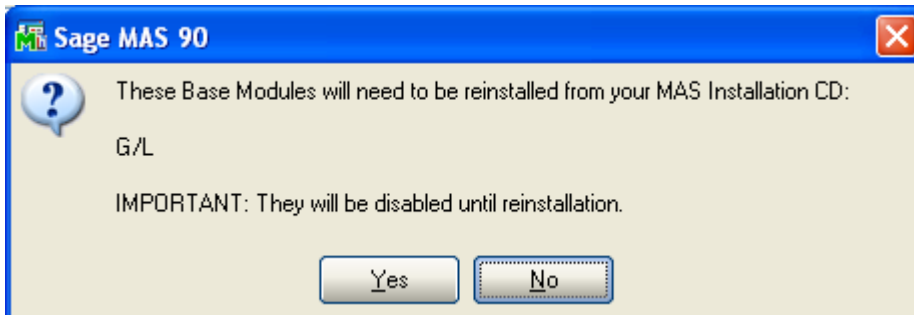


Select **No** to exit the Uninstall Process.

Select **Yes** to continue with the Uninstall Process.

After the Uninstall of the DSD Enhancement, you **MUST** reinstall certain standard Sage 100 modules, followed by reinstallation of MAS Service Packs / Updates, if applicable.

The following message box will appear, and will display which of those specific Sage 100 modules you must reinstall afterwards.



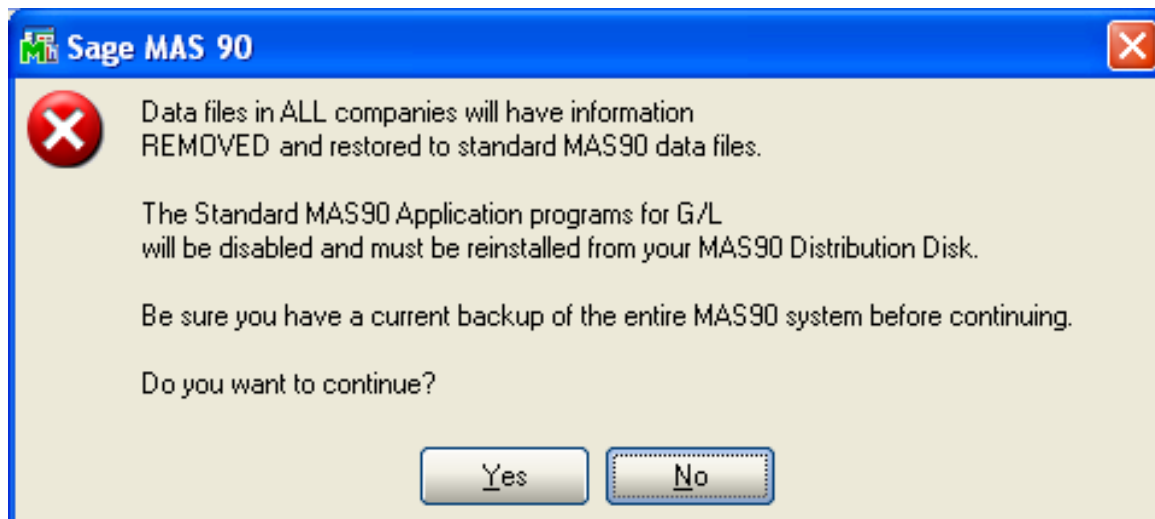
Select **No** to exit the Uninstall Process.

Select **Yes** to continue with the Uninstall Process.

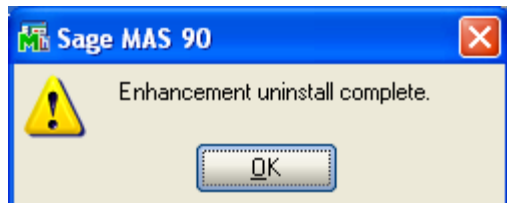
The following message box will appear, displaying the final warning message.

Select **No** to exit the Uninstall Process.

Select **Yes** to continue with the Uninstall Process. At this point, the DSD Enhancement will be removed from the Sage 100 system.



After completion of the Uninstall, the following message box will appear. Select OK to continue.



Now that the Uninstall process is completed, you must:

- Reinstall the applicable standard Sage 100 modules
- Reinstall the latest Sage 100 Service Pack/Updates, if applicable.
- Reinstall any other DSD Enhancements or Developer products that are affected from the reinstallation of the standard Sage 100 module(s).

## License Agreement

---

**IMPORTANT:** THIS SOFTWARE IS LICENSED BY DSD BUSINESS SYSTEMS, INC. TO CUSTOMERS FOR THEIR USE ONLY IN ACCORDANCE WITH THE TERMS SET FORTH IN THIS CUSTOMER LICENSE AGREEMENT. OPENING OR USING THIS PACKAGE CONSTITUTES ACCEPTANCE OF THESE TERMS. IF THE TERMS OF THIS LICENSE ARE NOT ACCEPTABLE, THE CUSTOMER MAY OBTAIN A FULL REFUND OF ANY MONEY PAID IF THIS UNUSED, UNOPENED PACKAGE IS RETURNED WITHIN TEN (10) DAYS TO THE DEALER FROM WHICH IT WAS ACQUIRED.

1. **LICENSE. DSD BUSINESS SYSTEMS, INC.,** a California corporation as Licensor and owner hereby agrees to grant you as Licensee a non-exclusive license to use the enclosed software subject to the terms and restrictions set forth in this License Agreement. Title in and ownership of all programs and program enhancements or modifications written by DSD Business Systems, Inc. shall remain at all times vested in DSD Business Systems, Inc. The right granted by this Customer License Agreement and your payment of the non-refundable License fee is the right to use the Program in accordance with the terms of this Customer License Agreement. Delivery of a copy of the Program to you is made solely to enable you to exercise this right.
2. **COPYRIGHT.** This Program is copyrighted and all rights are reserved by DSD BUSINESS SYSTEMS, INC. and SAGE, INC. You may not copy or reproduce any part of the Program except to copy the Program for backup purposes. If you make a backup copy you must reproduce and include the copyright notice on it. The distribution of the product is intended for the use of the original Licensee only and for use only on the computer systems specified. Lawful users of this Program are hereby licensed only to read the Program from its medium into the memory of a computer only for the purpose of executing the program.

The documentation is also copyrighted and all rights are reserved. This document may not, in whole or in part, be copied, photocopied, reproduced, translated, transmitted or reduced to any electronic medium of machine readable form without prior consent, in writing, from DSD BUSINESS SYSTEMS, INC.

The Licensee recognizes that DSD BUSINESS SYSTEMS, INC. has expended considerable time, effort and money to develop the licensed Software and Manual and that DSD BUSINESS SYSTEMS, INC. will be substantially damaged by its unauthorized use, sale or distribution. In addition to recovery of all damages and the obtaining of injunctive relief as provided by law, in the event legal action must be taken to enforce this provision, the Licensee will pay DSD BUSINESS SYSTEMS, INC. all reasonable legal fees incurred in enforcing the rights of DSD BUSINESS SYSTEMS, INC. under this provision.

3. **RESTRICTIONS ON USE AND TRANSFER.** The original and any backup copies of the Program and its documentation are to be used only in connection with a single computer or network fileserver. You may physically transfer the Program from one computer to another, provided that the Program is used in connection with only one computer or network fileserver at a time. You may not distribute copies of the Program Documentation to others. The Program is to be used exclusively for business purposes and not for personal, family or household use. YOU MAY NOT USE, COPY, MODIFY, OR TRANSFER THE PROGRAM, IN WHOLE OR IN PART, EXCEPT AS EXPRESSLY PROVIDED FOR IN THIS LICENSE AGREEMENT. IN ADDITION YOU MAY NOT MODIFY, ADAPT, TRANSLATE, REVERSE ENGINEER, DECOMPILE, DISASSEMBLE THE PROGRAM, OR CREATE ANY DERIVATIVE WORK BASED UPON THE PROGRAM.
4. **WARRANTY.** DSD BUSINESS SYSTEMS, INC. software is licensed "as is" with no warranties of any kind, either expressed or implied, other than the following: DSD BUSINESS SYSTEMS will repair any bugs or flaws found in the software. Flaws of a critical nature which affect the basic functionality of the software will be repaired on an "emergency" basis, with a corrected distribution diskette sent via UPS Blue or equal. Flaws of a non-critical or cosmetic nature will be repaired on a timely basis, and a corrected distribution diskette sent via UPS ground or regular mail. All incidental or consequential damages that result from any defect in the software, even if DSD Business Systems, Inc. has been advised of the possibility of such damages will be assumed by you.

5. **LIMITED WARRANTY FOR DISKETTES.** To the original licensee only, DSD BUSINESS SYSTEMS, INC. warrants the magnetic diskette on which the Program is recorded to be free from defects in materials and faulty workmanship under normal use and service for a period of ninety days from the date the Program is delivered. Any implied warranties of merchantability and fitness for a particular purpose are limited in duration to the period of ninety (90) days from the date of delivery. If, during this 90 day period, a defect in the diskette should occur, the diskette may be returned DSD BUSINESS SYSTEMS, INC., 5120 Shoreham Place, Suite 280, San Diego, California, 92122, or to any authorized DSD BUSINESS SYSTEMS, INC. Dealer, and the diskette will be replaced without charge to you, provided that you have previously returned the Warranty Registration Card along with a copy of your sales receipt for the Program.
6. **NO OTHER WARRANTIES.** No dealer or distributor of DSD BUSINESS SYSTEMS, INC. products or any agent of DSD BUSINESS SYSTEMS, INC. is authorized to make any representation of warranty with respect to the Program except those expressly stated in the Customer License Agreement.
7. **LIMITATION OF LIABILITY.** Neither DSD BUSINESS SYSTEMS, INC. nor anyone else who has been involved in the creation, production or delivery of this program shall be liable for any direct, incidental or consequential damages.
8. **TERM.** This license is effective until terminated. You may terminate it at any time by returning the Program and Documentation together with all copies, modifications and merged portions in any form to DSD BUSINESS SYSTEMS, INC. The license will also be terminated by DSD BUSINESS SYSTEMS, INC. immediately and without notice if you fail to comply with any term or condition of this License Agreement.
9. **ACKNOWLEDGMENT.** Your opening this package, use of this program or signature on the warranty registration card acknowledges that you have read this customer license agreement and agree to its terms. You further agree that the license agreement is the complete and exclusive statement of the agreement between yourself and DSD BUSINESS SYSTEMS, INC. and supersedes any proposal or prior agreement, oral or written, and any other communications between yourself and DSD BUSINESS SYSTEMS, INC or dealers and distributors of DSD BUSINESS SYSTEMS, INC products relating to the subject matter of this agreement.
10. **ASSIGNMENT.** You may not sublicense this license or the Program. You may not rent this Program or the use of the Program. You may not transfer this copy of the Program unless the recipient agrees in writing (and a copy of such acceptance is sent to DSD BUSINESS SYSTEMS, INC., 5120 Shoreham Place, Suite 280, San Diego, California, 92122) to accept all of the terms of this Customer License Agreement. Any attempt by you to otherwise rent, sublicense, assign or transfer any of the rights, duties or obligation hereunder is void and may be the cause for immediate termination of the license. DSD BUSINESS SYSTEMS, INC. may assign any of its rights and obligation under this agreement to any party without notice to you.

## Fax Transmittal Form

---

To:	<i>DSD Business Systems Customer Service</i>		Fax:	<i>858/550-4900</i>
From:	Name:		Phone:	
	Company:		Fax:	
Date:	/ /	# Pgs Including this Page:		
Subject:	Check One: <input type="checkbox"/> Product Problem <input type="checkbox"/> Suggestions			
Product:	<i>LMCC Company Consolidation</i>		Version:	<i>5.00</i>

This page may be copied