



DSD Business Systems

SAGE 100 Enhancements

J163

Revenue Posting by Job Type and Cost Type

JC-1163

Version 5.30



Information in this document is subject to change without notice.

Copyright 1993-2017, DSD Business Systems All rights reserved.

Revenue Posting by Job Type and Cost Type User's Manual
Version 5.30

13 March, 2017

DSD Business Systems
8787 Complex Drive
Suite 400
San Diego, CA 92123
858/550-5900 8:00am to 5:00pm PST
858/550-4900 Fax

Trademarks

ProvideX® is a Trademark of Sage Software.

Windows is a trademark of Microsoft Corporation.

SAGE 100® is a registered trademark of Sage Software.

PXPlus® is a registered trademark of PVX Plus technologies

All other product names and brand names are service marks, and/or trademarks or registered trademarks of their respective companies.

This documentation and the software described herein, is prepared and published under license. Sage Software has not tested or verified either the software or any representation in this documentation regarding the software. Sage Software does not make any warranty with respect to either this documentation or the software described herein, and specifically disclaims any warranty, express or implied, with respect hereto, including the warranties of fitness for a particular purpose and merchantability.

Table of Contents

SECTION A: INTRODUCTION	5
WEB RESOURCES	5
SUPPORT	5
REVENUE POSTING BY JOB TYPE AND COST TYPE FEATURES	6
SECTION B: GETTING STARTED	7
REQUIRED LEVELS	7
INSTALLATION	7
DSD ENHANCEMENT CONTROL PANEL	9
SECTION C: SETUP	10
SECTION D: SYSTEM OPERATIONS	11
VISUAL INTEGRATOR	13
ODBC DICTIONARY	13
SECTION E: UNINSTALL DSD ENHANCEMENTS	14
LICENSE AGREEMENT	ERROR! BOOKMARK NOT DEFINED.
FAX TRANSMITTAL FORM	ERROR! BOOKMARK NOT DEFINED.

Section A: Introduction

This manual contains a description and instructions for this DSD product. Operating instructions are included for the features added by this product to SAGE 100. For instructions on using SAGE 100, refer to the appropriate SAGE 100 manual, or call your SAGE 100 reseller. DSD Business Systems offers excellent SAGE 100 support, at an hourly rate.

Web Resources

DSD web site: <http://www.dsdinc.com>

The Enhancement page contains:

- Current Release Schedule*
- Purchasing Information*
- Installation Instructions*
- Product Support*
- Enhancement Links*

J163 Revenue Posting by Job Type and Cost Type: <http://www.dsdinc.com/enh/pages/J163.htm>

The product web page contains:

- Product Description*
- Adobe Acrobat Product Description*
- Web Links*
- Current Product Version Table*
- Product Installation File Download*
- Product Manual in Word 97 and Adobe Acrobat Formats*
- Revision History*
- FAQ*

Support

DSD provides product support through SAGE 100 resellers. Support is provided for the current version. Older versions are supported at an hourly rate. DSD's telephone number is **858-550-5900**. Fax: **858-550-4900**.

For a hard error, where the program displays an error dialog, report:

- Error number.*
- Program name.*
- Line number.*
- Program version.*
- Exact sequence that caused the error, including menus and menu selections.*

Other pertinent information.

If leaving a message or faxing, please include:

Your name.

Your phone number (and fax if applicable) and extension.

It is possible to be unable to duplicate a problem, because of data corruption or because we have not exactly duplicated a particular operating environment. In such circumstances, we can only continue to try to fix the problem if we can either access the system with Symantec PCAnywhere or by some other means access or duplicate the system.

Revenue Posting by Job Type and Cost Type Features

This Extended Solution creates G/L Daily Posting records for job billing revenue transactions by Job Type/Cost Type when using work in process. The Job Billing Register has been modified to validate the revenue accounts, and Job Billing Register Update has been modified to post Revenue and Deferred Revenue to G/L.

This enhancement applies to jobs with 'Time and Material' selected as Bill Method.
No changes have been made to Sales Journal Update.

Section B: Getting Started

CAUTION

- If you reinstall or upgrade one of the SAGE 100 modules listed in the following table, you must also reinstall this Enhancement.
- Enhancements from different Sage Developers are generally not designed to work together. If installed together, problems are likely to occur.
- Check with DSD before installing more than one Enhancement.
- Do not install this Enhancement on MAS SQL Systems.

Required Levels

SAGE 100 Module	Module Required	Required Level
J/C	Y	5.30

Installation

The following instructions are for installing to Windows. For UNIX instructions see the "INSTALL.HTM" HTML file on the CD-ROM (you can use a Windows machine to view it.) It will guide you in mounting the CD-ROM on the UNIX file system and running a UNIX installation script.

1. **Back-up:** Exit all SAGE 100 sessions. Back-up existing SAGE 100 data.
2. **Check Levels:** SAGE 100 module levels **must match** those listed above.
3. **Run Enhancement Setup Program:** Save the executable installation program (sent to you or downloaded from our website) in a convenient location on the SAGE 100 server. Launch the program from Windows Explorer or by selecting Start/Run, then browse for the file in the location you saved it. Follow on-screen instructions.
4. **Re-Start SAGE 100:** SAGE 100 will be updated.
5. **Unlock the Enhancement:** DSD Enhancements must be unlocked to run. When any part of the Enhancement is run for the first time, the **DSD Enhancement License Agreement and Activation** window will appear. Follow the steps shown on that window. *You can click the Help button for more detailed instructions.*

Note: On the next page is a screenshot of the DSD Enhancement License Agreement and Activation window.

After accepting the License Agreement, you can then select the type of unlocking that you'd prefer. The choices are Normal, Demo and Web.

Normal Unlock: You will need to unlock the Enhancement by calling DSD during business hours (8am to 5pm PST) at **858-550-5900**.

Web Unlock: If the system that is running the DSD Enhancement has web access and you have a DSD WebUnlock code, you can unlock the Enhancement without assistance using

WebUnlock. When this option is selected, the window will change to show the WebUnlock entry section. Enter the WebUnlock code and click the Unlock button.

- *Entering a WebUnlock code will unlock all DSD Enhancements that have been licensed.*
- *The MAS 90/ 200 system that is being used must have web access for this option to be available.*
- *You can get a WebUnlock Code from your DSD Enhancements sales representative.*

Demo Unlock: If a Demo mode is available for the Enhancement you're running, you will be able to Demo unlock the product without assistance from DSD for demo purposes.

- *Creating a Demo Unlock is a good way to temporarily unlock DSD Enhancements off-hours, if you do not have web access and/or a WebUnlock code. Later, you can unlock the product fully, during business hours.*

Note: You can also unlock a DSD Enhancement through the **DSD Enhancement Control Panel** found on the Library Master Utilities Menu. Then, select the Enhancement with your mouse from the list of Enhancements and click the **Unlock Product** button on the right side of the window.

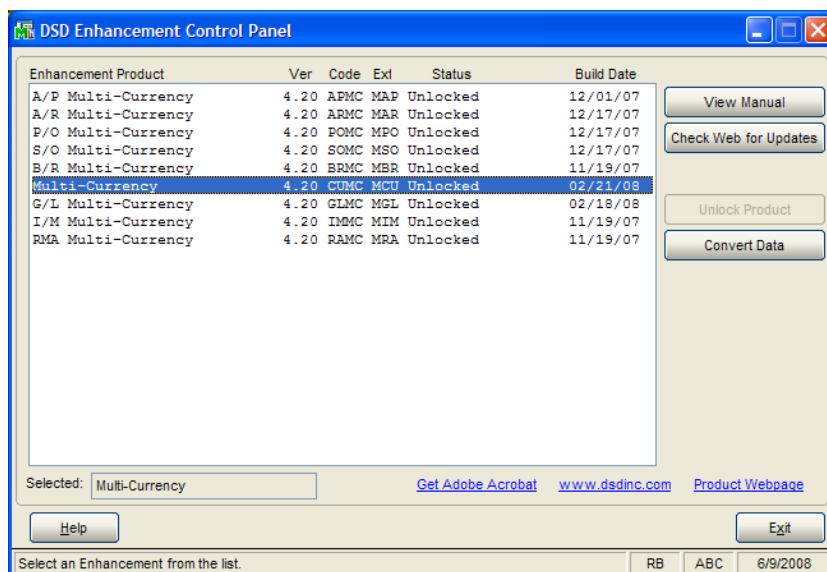
6. **Convert Data:** After registration, the Data Conversion window will appear. Follow on-screen instructions to complete data conversion. *You can exit the conversion program without converting data. The Enhancement will not proceed, however, until data is converted. If you enter an enhanced program and data has not been converted, the conversion program will run again.*

DSD Enhancement Control Panel

Starting with version 3.61, all DSD Enhancement products include DSD's Enhancement Control Panel. The **DSD Enhancement Control Panel** is accessed from the **Library Master Utilities** menu.

The DSD Enhancement Control Panel is a simple to use yet powerful system to help maintain DSD Enhancements installed on a SAGE 100 system. To use it, select an Enhancement product from the list on the window and then click the button, on the right side of the window, which corresponds with the desired task.

View Manual: This button will display the product manual for the selected Enhancement using Adobe Acrobat. For this to be possible, the PDF file for the corresponding manual must be in the "MAS90/PDF" folder in the SAGE 100 system. If the file is not present, and the system has web access, the correct PDF file will be automatically downloaded from the DSD website, put into the "MAS90/PDF" folder and then displayed.



Check the Web for Updates: This button will check the DSD website to see what the current build is the selected Enhancement and alert the user if a later version is available. *This requires an ftp web connection on the MAS 90/ 200 system.*

Unlock Product: This will cause the DSD Enhancement License Agreement and Activation window to appear. Using this window is described on the previous page. *This button is disabled if the selected Enhancement is already unlocked.*

Convert Data: After verification, the selected Enhancements data conversion program will run. Data conversion is non-destructive, and may be triggered any number of times. Sometimes this is required to fix data records imported or updated from a non-enhancement installation.

Help: The Help button, located at the bottom left of the window, opens an HTML help file .

Get Adobe Acrobat: Opens the Adobe Acrobat website to the page where Acrobat can be downloaded and installed.

There are also links to the DSD website and the Enhancement page on that site.

Section C: Setup

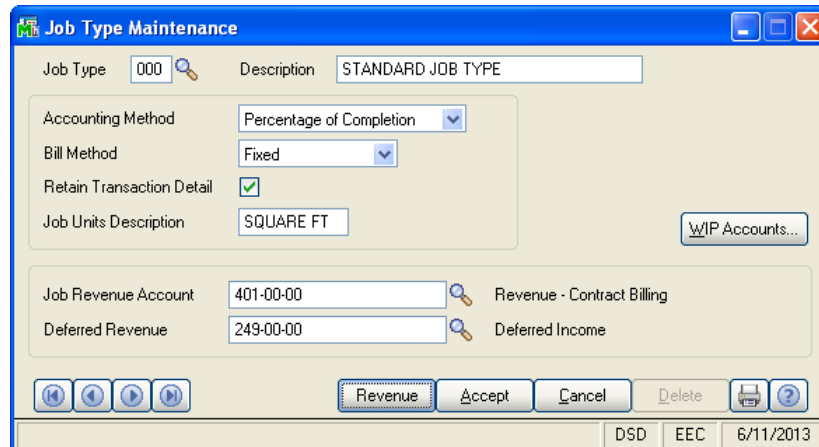
Upon completion of software installation, you will need to access the DSD Extended Solutions Setup from the Job Cost Setup menu. Select this part number and the Setup screen for this Extended Solution will appear. Check the 'Enable DSD Extended Solution' box to activate this Extended Solution.

The screenshot shows a software setup window titled "JC-1163 Setup Options". Inside the window, the title "JC-1163 Revenue by Job/Cost Ty" is displayed. Below the title, there is a checkbox labeled "Enable DSD Extended Solution" which is checked, and a text field showing "Level 5.30". At the bottom right of the window are "Accept" and "Cancel" buttons. At the bottom left, there is a checkbox labeled "Check this box to enable JC-1163 Revenue by Job/Cost Ty". At the bottom right, there are three buttons: "DSD", "EEC", and "3/1/2017".

You should visit this Setup screen after each upgrade or reinstallation of this Extended Solution.

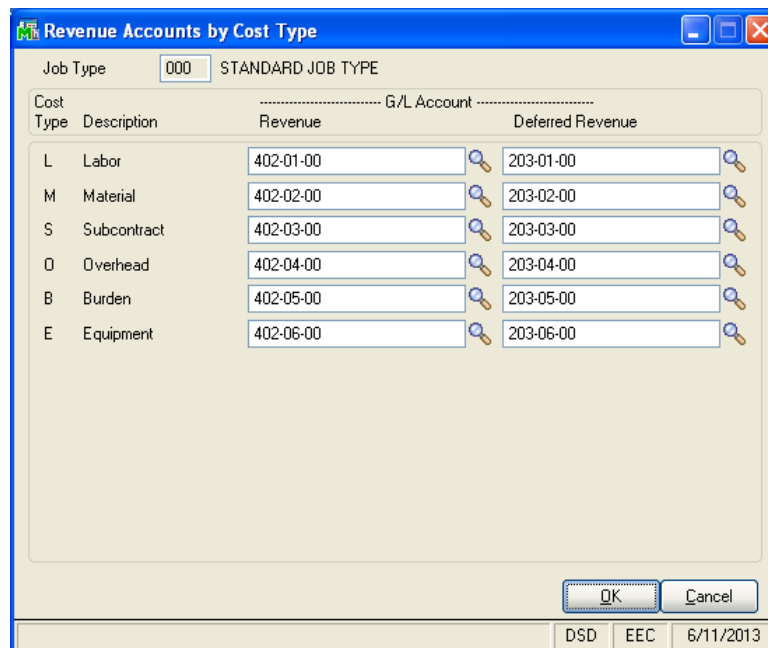
Section D: System Operations

When the Job Cost Option 'Post to G/L for Work in Process' is checked, the 'Revenue' button on the Job Type Maintenance screen is activated. When selected, a Revenue by Cost Type screen will be presented where Revenue and Deferred Revenue G/L Accounts can be setup.



The Job Type Maintenance screen displays the following fields and options:

- Job Type: 000
- Description: STANDARD JOB TYPE
- Accounting Method: Percentage of Completion
- Bill Method: Fixed
- Retain Transaction Detail: ☒
- Job Units Description: SQUARE FT
- WIP Accounts... button
- Job Revenue Account: 401-00-00 (Revenue - Contract Billing)
- Deferred Revenue: 249-00-00 (Deferred Income)
- Buttons: Revenue, Accept, Cancel, Delete, Print, Help
- Status bar: DSD EEC 6/11/2013



The Revenue Accounts by Cost Type screen displays the following table:

Cost Type	Description	Revenue	Deferred Revenue
L	Labor	402-01-00	203-01-00
M	Material	402-02-00	203-02-00
S	Subcontract	402-03-00	203-03-00
O	Overhead	402-04-00	203-04-00
B	Burden	402-05-00	203-05-00
E	Equipment	402-06-00	203-06-00

Buttons: OK, Cancel

Status bar: DSD EEC 6/11/2013

The Job Type Listing is modified to print the additional revenue accounts.

Edwardson Electric Company				
Job Type Listing				
TYPE DESCRIPTION	ACCT METHOD	BILL METHOD	COST DETAIL?	JOB UNIT DESCRIPTION
000 STANDARD JOB TYPE	PERC CMP	FIXED	Y	SQUARE FT
JOB REVENUE ACCOUNT:	401-00-00			
DEFERRED REVENUE:	249-00-00			
G/L ACCOUNT				
COST TYPE	WORK IN PROCESS			COST OF SALE
L Labor	141-00-00			451-00-00
M Material	143-00-00			453-00-00
S Subcontract	144-00-00			454-00-00
O Overhead	146-00-00			456-00-00
B Burden	145-00-00			455-00-00
E Equipment	142-00-00			452-00-00
G/L ACCOUNT				
COST TYPE	REVENUE			DEFERRED REVENUE
L Labor	402-01-00			203-01-00
M Material	402-02-00			203-02-00
S Subcontract	402-03-00			203-03-00
O Overhead	402-04-00			203-04-00
B Burden	402-05-00			203-05-00
E Equipment	402-06-00			203-06-00

The Job Billing Register has been modified to validate the revenue accounts. A G/L Revenue Posting report will print immediately after the Job Billing Register.

Edwardson Electric Company			
JOB BILLING REGISTER			
G/L REVENUE POSTING			
JOB NO	DESCRIPTION/ COST TYPE	POSTING AMOUNT	REVENUE G/L ACCOUNT
EEC2140	Saddleback-Hospital Remodel		
	L Labor	500.00	203-01-00
	M Material	450.00	203-02-00
	E Equipment	5,000.00	203-06-00
	JOB EEC2140 TOTAL:	5,950.00	
EEC3350	Nexus-17th Floor Buildout		
	L Labor	2,000.00	402-01-00
	M Material	2,000.00	402-02-00
	E Equipment	1,100.00	402-06-00
	JOB EEC3350 TOTAL:	5,100.00	

Edwardson Electric Company					
JOB BILLING REGISTER					
G/L WORK IN PROCESS RECAP					
JOB NO	DESCRIPTION/ COST TYPE	POSTING AMOUNT	G/L POSTINGS		
			WORK IN PROC.	COST OF SALE	
EEC3350	Nexus-17th Floor Buildout				
	L Labor	1,400.00	141-00-00	451-00-00	
	M Material	2,540.00	143-00-00	453-00-00	
	S Subcontract	400.00	144-00-00	454-00-00	
	O Overhead	120.00	146-00-00	456-00-00	
	E Equipment	300.00	142-00-00	452-00-00	
	JOB EEC3350 TOTAL:	4,760.00			
SRV5000	Far West Savings-Lobby Remodel				
	L Labor	250.00	141-00-00	451-00-00	
	M Material	300.00	143-00-00	453-00-00	
	S Subcontract	650.00	144-00-00	454-00-00	
	E Equipment	450.00	142-00-00	452-00-00	
	JOB SRV5000 TOTAL:	1,650.00			
	REPORT TOTAL:	6,410.00			

The Job Billing Register Update has been modified to post Revenue and Deferred Revenue to General Ledger using the G/L accounts from the Revenue by Cost Type screen. When no G/L Accounts have been setup on the Revenue by Cost Type screen, the Revenue and Deferred Revenue accounts set up in Job Type Maintenance will be used.

Visual Integrator

The files listed below have been added or changed in the Data Dictionary by this Extended Solution for Visual Integrator purposes.

File	Field
JC.Type_II	All Fields

The Data Dictionary may contain other files and data fields that are not available without their corresponding Sage Software Extended Solutions installed.

ODBC Dictionary

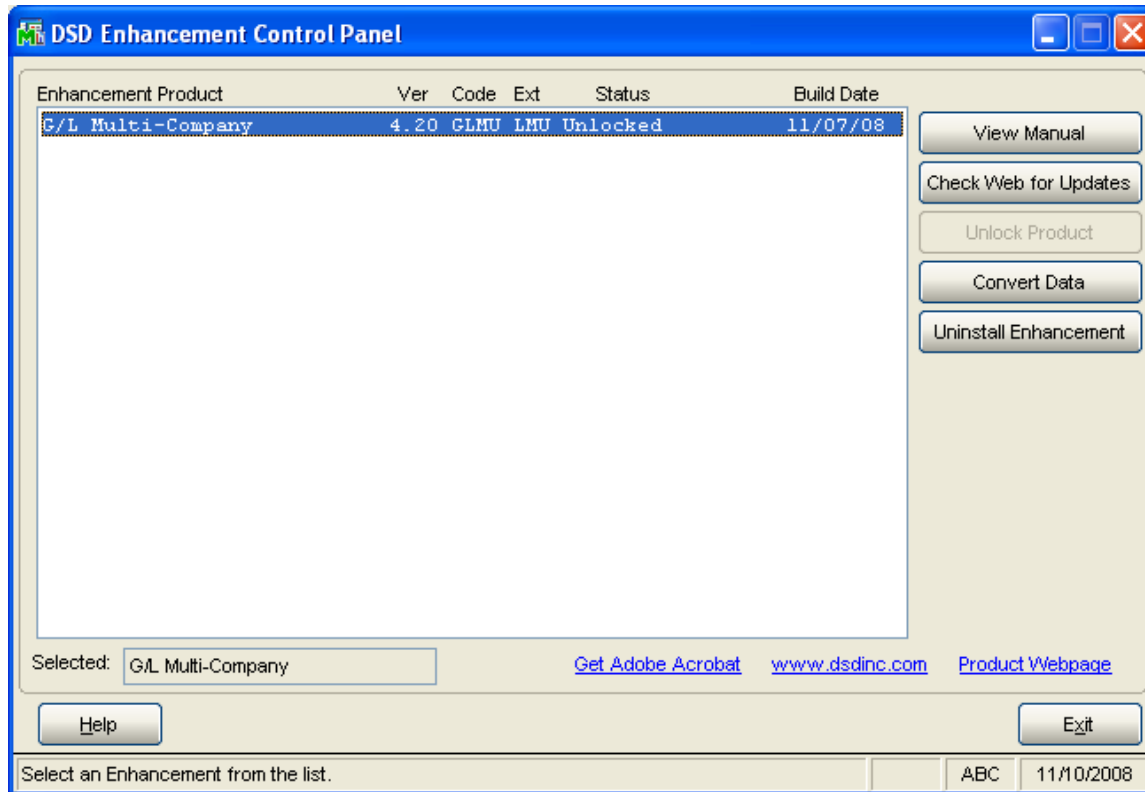
The files listed below have been added, or changed, in the ODBC Dictionaries by this Extended Solution for Crystal Reports purposes.

File:	Fields:
JC_AA_JobTypeMasterfileII	All Fields

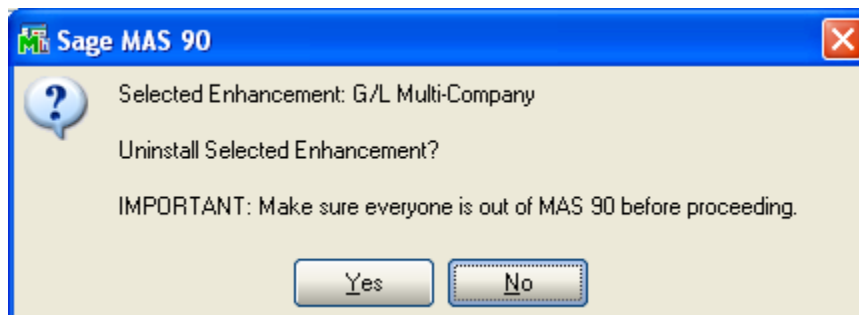
Be aware that the ODBC Dictionaries may contain other files and data fields that will be unavailable without their corresponding Extended Solutions installed.

Section E: Uninstall DSD Enhancements

A DSD Enhancements Uninstall Utility has been provided for the purposes of removing DSD Enhancements from your SAGE 100 System. This utility may be accessed from the **DSD Enhancement Control Panel** menu option on the **Library Master / Utilities** menu.

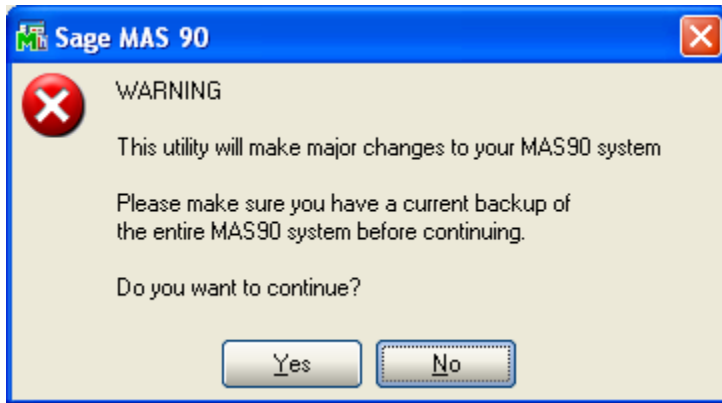


When accessing the **DSD Utility Suite**, select the enhancement that you wish to Uninstall, and then select the **Uninstall Enhancement** button. The following message box will appear:



Select **No** to exit the Uninstall Process.
Select **Yes** to continue with the Uninstall Process.

The following message box will appear, to remind you that a complete backup of your entire MAS90 system should be completed prior to uninstalling a DSD product.

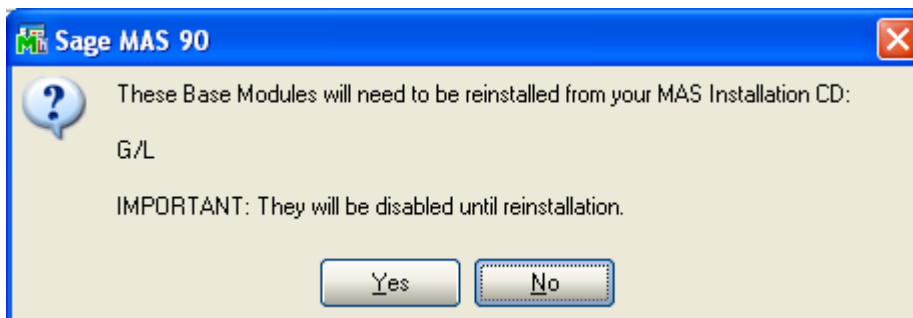


Select **No** to exit the Uninstall Process.

Select **Yes** to continue with the Uninstall Process.

After the Uninstall of the DSD Enhancement, you **MUST** reinstall certain standard SAGE 100 modules, followed by reinstallation of MAS Service Packs / Updates, if applicable.

The following message box will appear, and will display which of those specific SAGE 100 modules you must reinstall afterwards.



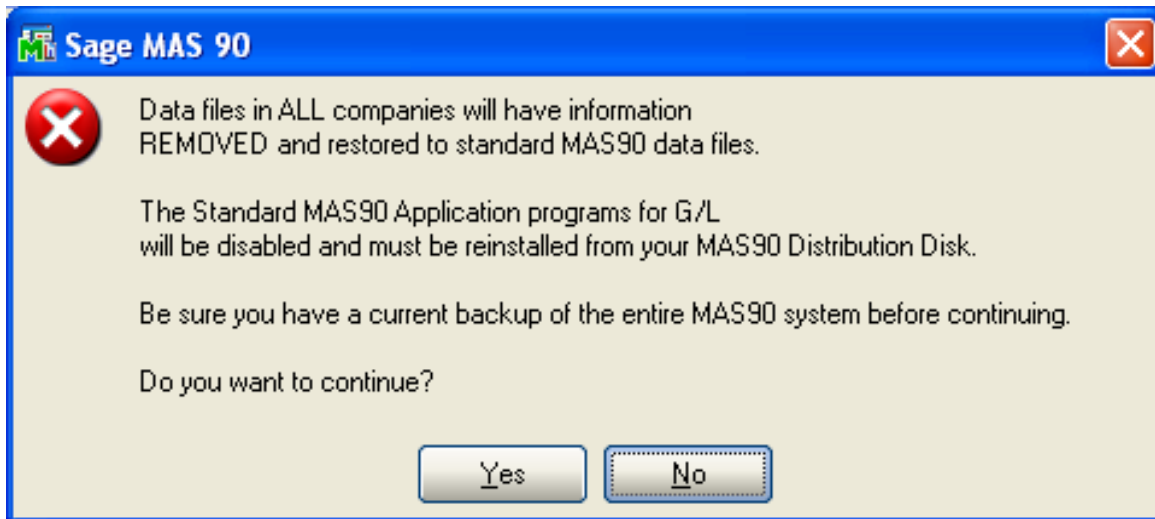
Select **No** to exit the Uninstall Process.

Select **Yes** to continue with the Uninstall Process.

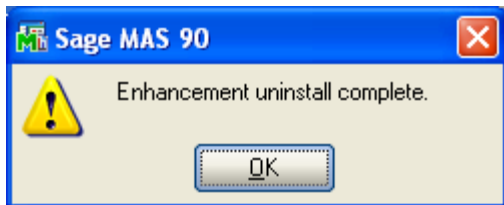
The following message box will appear, displaying the final warning message.

Select **No** to exit the Uninstall Process.

Select **Yes** to continue with the Uninstall Process. At this point, the DSD Enhancement will be removed from the SAGE 100 system.



After completion of the Uninstall, the following message box will appear. Select OK to continue.



Now that the Uninstall process is completed, you must:

- Reinstall the applicable standard SAGE 100 modules
- Reinstall the latest SAGE 100 Service Pack/Updates, if applicable.
- Reinstall any other DSD Enhancements or Developer products that are affected from the reinstallation of the standard SAGE 100 module(s).

