



# **DSD Business Systems**

Sage 100 Enhancements

**J019**

**Date Sensitive Job Cost Reports**

JC-1019

Version 5.40



Information in this document is subject to change without notice.

Copyright 1993-2015, DSD Business Systems All rights reserved.

Date Sensitive Job Cost Reports User's Manual  
Version 5.40

6 December, 2018

DSD Business Systems  
5120 Shoreham Place  
Suite 280  
San Diego, CA 92122  
858/550-5900 8:00am to 5:00pm PST  
858/550-4900 Fax

### Trademarks

**ProvideX®** is a Trademark of Sage Software.

**Windows** is a trademark of Microsoft Corporation.

**Sage 100®** is a registered trademark of Sage Software.

**PXPlus®** is a registered trademark of PVX Plus technologies

All other product names and brand names are service marks, and/or trademarks or registered trademarks of their respective companies.

This documentation and the software described herein, is prepared and published under license. Sage Software has not tested or verified either the software or any representation in this documentation regarding the software. Sage Software does not make any warranty with respect to either this documentation or the software described herein, and specifically disclaims any warranty, express or implied, with respect hereto, including the warranties of fitness for a particular purpose and merchantability.



---

## Table of Contents

---

<b>SECTION A: INTRODUCTION</b>	<b>5</b>
WEB RESOURCES .....	5
SUPPORT .....	5
DATE SENSITIVE JOB COST REPORTS FEATURES .....	6
<b>SECTION B: GETTING STARTED</b>	<b>7</b>
REQUIRED LEVELS .....	7
INSTALLATION .....	7
DSD ENHANCEMENT CONTROL PANEL .....	9
<b>SECTION C: SETUP</b>	<b>11</b>
<b>SECTION D: SYSTEM OPERATIONS</b>	<b>12</b>
JOB COST CODE DETAIL REPORT .....	12
JOB ANALYSIS REPORT .....	13
JOB TRANSACTION DETAIL REPORT .....	14
CUSTOM JOB COST DETAIL REPORT .....	15
<b>SECTION E: UNINSTALL DSD ENHANCEMENTS</b>	<b>19</b>
<b>LICENSE AGREEMENT</b>	<b>22</b>
<b>FAX TRANSMITTAL FORM</b>	<b>24</b>

## Section A: Introduction

---

This manual contains a description and instructions for this DSD product. Operating instructions are included for the features added by this product to Sage 100. For instructions on using Sage 100, refer to the appropriate Sage 100 manual, or call your Sage 100 reseller. DSD Business Systems offers excellent Sage 100 support, at an hourly rate.

### Web Resources

DSD web site: <http://www.dsdinc.com>

The Enhancement page contains:

- Current Release Schedule*
- Purchasing Information*
- Installation Instructions*
- Product Support*
- Enhancement Links*

J019 Date Sensitive Job Cost Reports:

<http://www.dsdinc.com/enh/pages/J019.htm>

The product web page contains:

- Product Description*
- Web Links*
- Current Product Version Table*
- Product Installation File Download*
- Product Manual in .pdf Format*
- Revision History*
- FAQ*

### Support

DSD provides product support through Sage 100 resellers. Support is provided for the current version. Older versions are supported at an hourly rate. DSD's telephone number is **858-550-5900**. Fax: **858-550-4900**.

For a hard error, where the program displays an error dialog, report:

- Error number.*
- Program name.*
- Line number.*
- Program version.*

*Exact sequence that caused the error, including menus and menu selections.  
Other pertinent information.*

If leaving a message or faxing, please include:

*Your name.*

*Your phone number (and fax if applicable) and extension.*

It is possible to be unable to duplicate a problem, because of data corruption or because we have not exactly duplicated a particular operating environment. In such circumstances, we can only continue to try to fix the problem if we can either access the system with Symantec PCAnywhere or by some other means access or duplicate the system.

### ***Date Sensitive Job Cost Reports Features***

This Extended Solution to the standard Sage 100 Job Cost module alters existing Job Cost reports and adds a new Custom Job Cost Detail Report. The custom report data and enhanced features of existing reports are listed below:

#### *Job Cost Code Detail Report*

- Date sensitivity allowing selection of Jobs by a specified range of transaction dates
- Print Cost Code transactions single spaced
- Include future transactions in the Job-To-Date column

#### *Job Analysis Report*

- Include future transactions in the Job-To-Date column

#### *Job Transaction Detail Report*

- Print Cost Code/Cost Types that have been set up with estimate Figures but do not have any transaction activity

#### *Custom Job Cost Detail Report*

- Reflects Transaction-To-Date Cost, Job-To-Date Cost, Original Estimated Cost, Revised Estimated Cost and Projected Cost To Complete selected by Job Number, Cost Code and Transaction Date
- Available in either Standard or Enhanced layouts with Summary or Detail reporting options for the Enhanced layout
- Include future transactions in the Job-To-Date column

## Section B: Getting Started

### CAUTION

- **If you reinstall or upgrade one of the Sage 100 modules listed in the following table, you must also reinstall this Enhancement.**
- Enhancements from different Sage Developers are generally not designed to work together. If installed together, problems are likely to occur.
- **Check with DSD before installing more than one Enhancement.**

### Required Levels

Sage 100 Module	Module Required	Required Level
J/C	Y	5.40

### Installation

1. **Back-up:** Exit all Sage 100 sessions. Back-up existing Sage 100 data.
2. **Check Levels:** Sage 100 module levels **must match** those listed above.
3. **Run Enhancement Setup Program:** Save the executable installation program (sent to you or downloaded from our website) in a convenient location on the Sage 100 server. Launch the program from Windows Explorer or by selecting Start/Run, and then browse for the file in the location you saved it. Follow on-screen instructions.
4. **Send your Sage Serial Number to your DSD Representative:** Send your Sage Serial Number to your DSD representative in order for us to send you back the encrypted keys to unlock your system. This serial number can be found in Library Master\Setup\System Configuration, Tab 3. Registration as Serial Number.
5. **Re-Start Sage 100:** Sage 100 will be updated.
6. **Unlock the Enhancement:** DSD Enhancements must be unlocked to run. When any part of the Enhancement is run for the first time, the **DSD Enhancement License Agreement and Activation** window will appear. Follow the steps shown on that window. *You can click the Help button for more detailed instructions.*

**Note:** On the next page is a screenshot of the DSD Enhancement License Agreement and Activation window.

After accepting the License Agreement, you can then select the type of unlocking that you'd prefer. The choices are File, Web, Demo and Manual Entry.

**File Unlock:** After receiving your encrypted serial number key file from DSD, and placing that file in the MAS90/SOA directory, selecting this option will unlock all products keys contained in the file. This means you can unlock all enhancements at once using this option.

**Web Unlock:** If the system that is running the DSD Enhancement *has web access* and you *have sent DSD your Sage Serial number*, you can unlock the Enhancement without assistance using

Web Unlock. When this option is selected, the program will attempt to download encrypted serial number key file from DSD *and then proceed to unlock all enhancements contained in the file.*

- *The Sage 100 system that is being used must have web access for this option to be effective.*
- *You can send your Sage Serial Number to your DSD Enhancements sales representative.*

**Demo Unlock:** If a Demo mode is available for the Enhancement you're running, you will be able to Demo unlock the product without assistance from DSD for demo purposes.

- *Creating a Demo Unlock is a good way to temporarily unlock DSD Enhancements off-hours, if you do not have web or email access. Later, you can unlock the product fully, during business hours.*

**DSD Enhancement License Agreement and Activation**

License Agreement

YOU MUST READ THIS AGREEMENT COMPLETELY AND AGREE BEFORE PROCEEDING. SCROLL THROUGH THIS AGREEMENT USING THE SLIDER CONTROL.

IMPORTANT: THIS SOFTWARE IS LICENSED BY DSD BUSINESS SYSTEMS, INC. TO CUSTOMERS FOR THEIR USE ONLY IN ACCORDANCE WITH THE TERMS SET FORTH IN THIS CUSTOMER LICENSE AGREEMENT. OPENING OR USING THIS PACKAGE CONSTITUTES ACCEPTANCE OF THESE TERMS. IF THE TERMS OF THIS LICENSE ARE NOT ACCEPTABLE, THE CUSTOMER MAY OBTAIN A FULL REFUND OF ANY MONEY PAID IF THIS UNUSED, UNOPENED PACKAGE IS RETURNED WITHIN TEN (10) DAYS TO THE DEALER FROM WHICH IT WAS ACQUIRED.

**1 Agree to License Agreement**  
 Agree  Disagree

**2 Select Unlocking Type**  
 Web  File  
 Demo  Manual Entry

**3 Call DSD at 858-550-5900**  
 Have this information ready: End User Name   
 Serial Number

**4 Enter the following from DSD**  
 Activation Key:   
 Click to Unlock:

ABC 4/28/2010

**Manual Entry Unlock:** If you want to unlock a single enhancement using a single encrypted key, you can select this option and enter the 64 character key you receive from DSD by copy and paste.

**Note:** *You can also unlock a DSD Enhancement through the **DSD Enhancement Control Panel** found on the Library Master Utilities Menu. Then, select the Enhancement with your mouse from the list of Enhancements and click the **Unlock Product** button on the right side of the window.*

- Convert Data:** After registration, the Data Conversion window will appear. Follow on-screen instructions to complete data conversion. *You can exit the conversion program without converting data. The Enhancement will not proceed, however, until data is converted. If you enter an enhanced program and data has not been converted, the conversion program will run again.*



### DSD Enhancement Control Panel

Starting with version 3.61, all DSD Enhancement products include DSD's Enhancement Control Panel. The **DSD Enhancement Control Panel** is accessed from the **Library Master Utilities** menu.

The DSD Enhancement Control Panel is a simple to use yet powerful system to help maintain DSD Enhancements installed on a Sage 100 system. To use it, select an Enhancement product from the list on the window and then click the button, on the right side of the window, which corresponds with the desired task.

**View Manual:** This button will display the product manual for the selected Enhancement using Adobe Acrobat. For this to be possible, the PDF file for the corresponding manual must be in the "MAS90/PDF" folder in the Sage 100 system. If the file is not present, and the system has web access, the correct PDF file will be automatically downloaded from the DSD website, put into the "MAS90/PDF" folder and then displayed.

**Check the Web for Updates:** This button will check the DSD website to see what the current build is the selected Enhancement and alert the user if a later version is available. *This requires an FTP web connection on the Sage 100 system.*

**Unlock Product:** This will cause the DSD Enhancement License Agreement and Activation window to appear. Using this window is described on the previous page. *This button is disabled if the selected Enhancement is already unlocked.*

**Unlock All Products:** This will cause the DSD Enhancement All License Agreement and Activation window to appear. This window is similar to the one described on the previous page, but has only web and file as options to unlock. *This button is never disabled.*



**Convert Data:** After verification, the selected Enhancements data conversion program will run. Data conversion is non-destructive, and may be triggered any number of times. Sometimes this is required to fix data records imported or updated from a non-enhancement installation.

**Help:** The Help button, located at the bottom right of the window, opens an HTML help file .

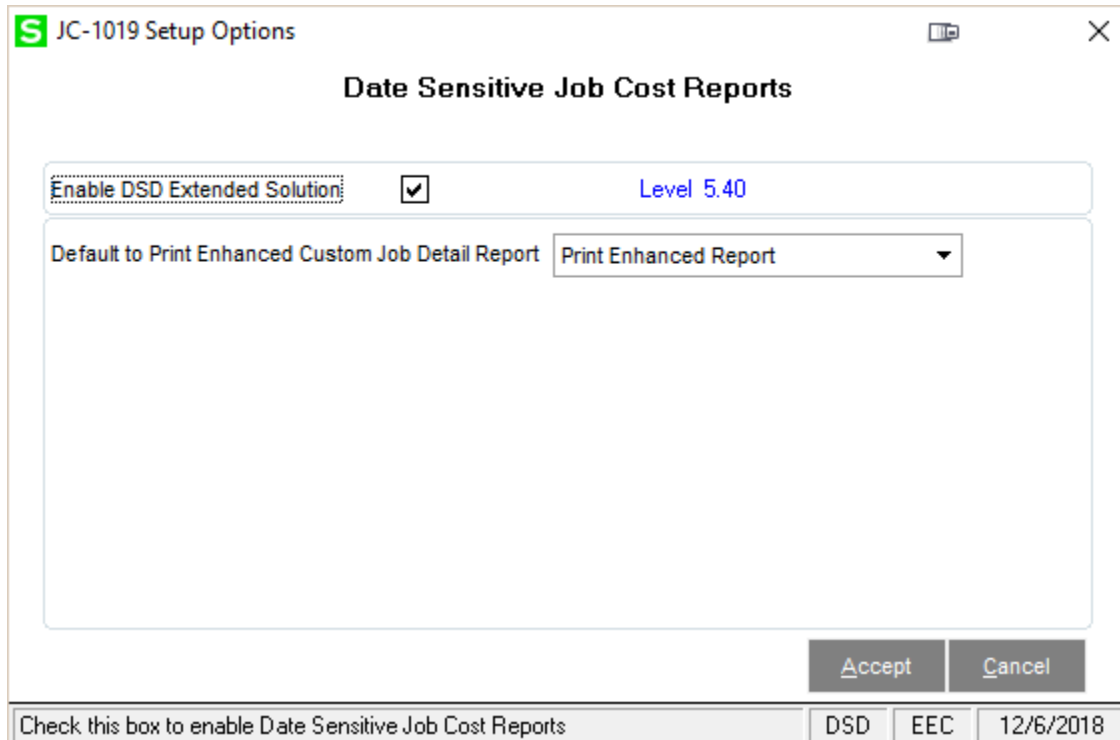
**Get Adobe Acrobat:** Opens the Adobe Acrobat website to the page where Acrobat can be downloaded and installed.

**Uninstall Enhancement** If this option is available, then selecting this button will start the un-install process, removing the enhancement from the system.

There are also links to the DSD website and the Enhancement page on that site.

## Section C: Setup

Upon completion of software installation, you will need to access the DSD Extended Solutions Setup from the Job Cost Setup menu. Select this part number and the Setup screen for this Extended Solution will appear. Check the 'Enable DSD Extended Solution' box to activate this Extended Solution.



The screenshot shows a window titled "JC-1019 Setup Options" with a subtitle "Date Sensitive Job Cost Reports". The window contains the following elements:

- A checkbox labeled "Enable DSD Extended Solution" which is checked. To its right, the text "Level 5.40" is displayed in blue.
- A dropdown menu labeled "Default to Print Enhanced Custom Job Detail Report" with the current selection being "Print Enhanced Report".
- At the bottom right, there are two buttons: "Accept" and "Cancel".
- At the bottom left, there is a footer area containing the text "Check this box to enable Date Sensitive Job Cost Reports" and three small boxes containing "DSD", "EEC", and "12/6/2018".

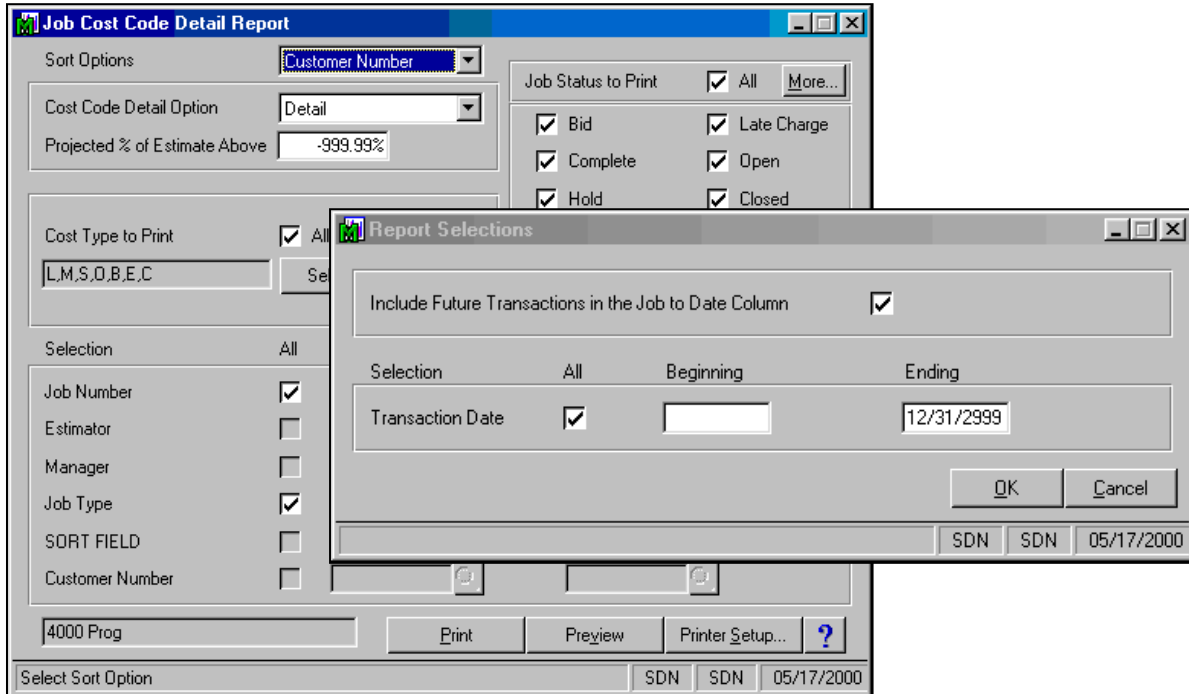
**DEFAULT TO PRINT ENHANCED CUSTOM JOB COST DETAIL REPORT:** Select 'Print Enhanced Report' and the default setting for the 'Print Enhanced Report' prompt on the selection screen will be checked. Select 'Print Standard Report' to set the default setting for that question to unchecked, thereby printing the Standard layout of the report. Select 'Do Not Prompt for Enhanced Report' to prevent the 'Print Enhanced Report' prompt from appearing on the selection screen (see Operations, Custom Cost Code Detail Report - Enhanced Layout below).

You should visit this Setup screen after each upgrade or reinstallation of this Extended Solution.

## Section D: System Operations

### Job Cost Code Detail Report

You now have the options to enter a range of transaction dates and to include future transactions in the Job-To-Date column by pressing the 'More' button on the report selection screen.

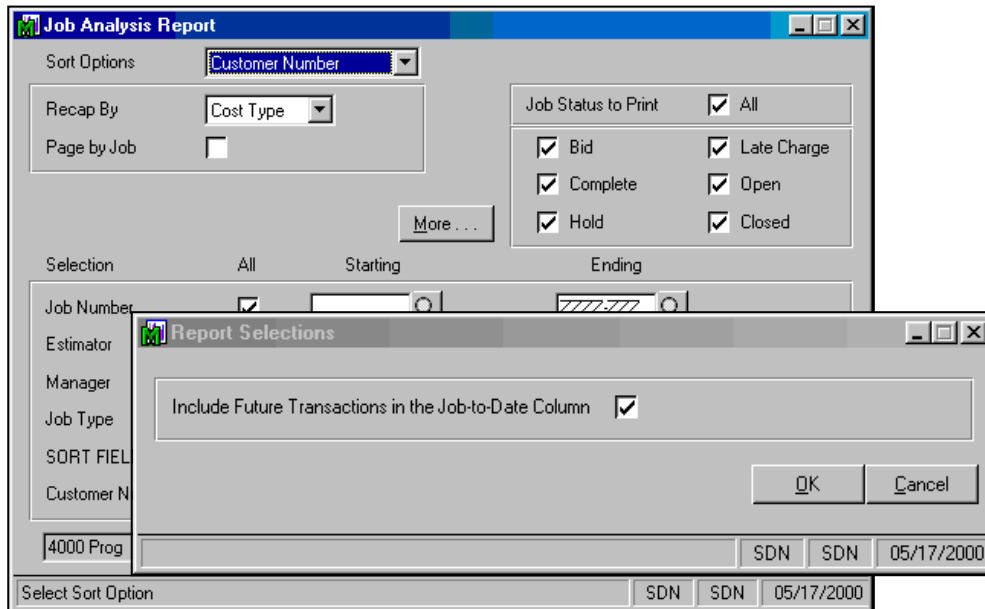


If a date range is entered, only transactions dated within the range will be included in the 'Period-To-Date' column. If you leave the 'Beginning Transaction Date' field blank, then 'Period-To-Date' information will print as it would in standard Sage 100.

The Report has also been enhanced to print Cost Code detail single-spaced unless the Cost Type is 'S' for Sub-contract.

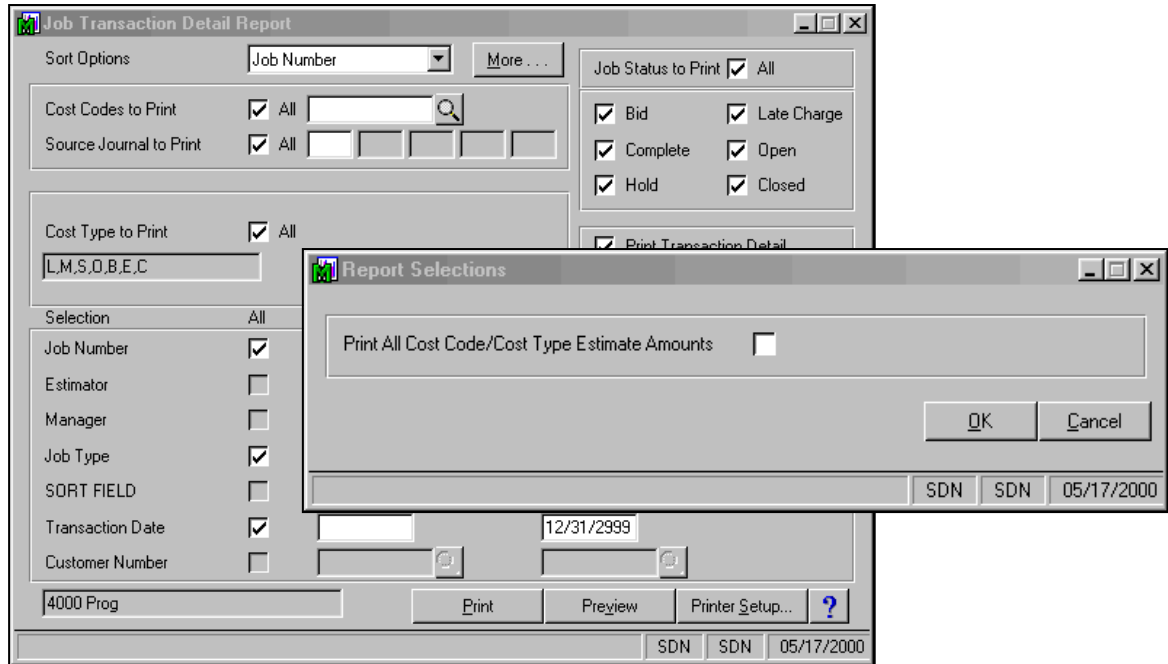
**Job Analysis Report**

The Job Analysis Report now has an option to include future transactions in the Job-To-Date Column, via the 'More' button. It should be noted that if a Cost Type/Cost Code has no estimate information, the 'Include Future Transactions In YTD' prompt is set to No, and there are only future postings, then the Cost Code/Cost Type line will print all zeros.



**Job Transaction Detail Report**

The Job Transaction Detail Report now has an option via the 'More' button to print the Cost Code/Cost Type, Description and Revised Estimate amount for Items that do not have any Transaction Activity.



**Custom Job Cost Detail Report**

On the selection screen, you can enter a range of Job Numbers, Cost Codes and Transaction Dates, a list of Cost Types, and whether to include future transactions in the Job-To-Date column. You may also select which format you would like: Standard, Enhanced Summary, Enhanced Detail or Budget Review. A check box for 'Use Alternate Calculation' has been added to the selection screen. This option is always checked for the Enhanced Summary format if the 'Include Future Transactions in Job-To-Date' box is checked. It is optional for the Enhanced Detail report and the Budget Review when the 'Include Future Transactions in Job-To-Date' box is checked. It is not available for the non-enhanced format. When this box is checked and the Percent Complete is zero, the following calculation will take place:

Job-To-Date Cost/Buyout\*100

The result will print in the Percent Complete column.

The screenshot shows a software window titled "Custom Job Cost Detail Report". The window contains several sections for user input and controls:

- Report Option:** A dropdown menu set to "Custom JC Detail Report".
- Include Future Transactions in JTD:** A checked checkbox.
- Use Alternate Calculation:** An unchecked checkbox.
- Cost Type to Print:** A checked checkbox labeled "All" and a text field containing "L,M,S,O,B,E". A "Select Cost Type..." button is to the right.
- Selection:** A table with columns for "All", "Starting", and "Ending".

Selection	All	Starting	Ending
Job Number	<input checked="" type="checkbox"/>	<input type="text"/>	<input type="text" value="////"/>
Cost Code	<input checked="" type="checkbox"/>	<input type="text"/>	<input type="text" value="///-///-///"/>
Transaction Date	<input checked="" type="checkbox"/>	<input type="text"/>	<input type="text" value="12/31/2999"/>
- Printer:** A "No Default Printer" button.
- Actions:** "Print", "Preview", and "Printer Setup..." buttons.
- Status Bar:** Displays "NDC", "EEC", and "11/10/2000".

**Standard Layout**

When run in the standard layout, this report reflects the following data elements:

- Transaction-To-Date Cost (transactions within the selected date range)
- Job-To-Date Cost (can include future postings, if selected)
- Original Estimated Cost
- Revised Estimated Cost
- Projected Cost To Complete

The report totals by Job Number, the **first** segment of the Cost Code (called Phase) and Cost Code/Cost Type.

Edwardson Electric Company						
CUSTOM J/C DETAIL REPORT						
<i>FOR ALL TRANSACTION DATES</i>						
COST TYPE	COST CODE	DESCRIPTION	T-T-D COST	J-T-D COST	ORG ESTD COST	REVISD COST
						PROJ COST TO COMPLETE
JOB NUMBER: SEC2140, Saddleback Hospital Remod						
PHASE: 100						
S	100-010-001	Underground Work - Saddleback Dg	2,100 55	2,100 55	2,000 00	2,000 00
M	100-030-000	Underground Work - Piping	162 00	162 00	00	162 00-
M	100-040-000	Underground Work - Wire Pull	111 00	111 00	00	111 00-
O	100-099-001	Saddleback Dg - Sub Overhead	350 00	350 00	00	350 00-
100 TOTAL:			2,723 55	2,723 55	2,000 00	2,000 00
SEC2140 TOTAL:			2,723 55	2,723 55	2,000 00	2,000 00
REPORT TOTAL:			2,723 55	2,723 55	2,000 00	2,000 00



**Enhanced Layout**

When 'Enhanced Detail' is selected, some fields from the standard layout are re-titled, new fields are added and calculations performed differently.

CUSTOM J/C DETAIL REPORT - ENHANCED DETAIL							Edwardson Electric Company	
FOR ALL TRANSACTION DATES								
COST TYPE	COST CODE	DESCRIPTION	COSTS FROM	J-T-D COST	BUYOUT	PROJ TOTAL COST	PROJ COST VARIANCE	% COMPLETE
JOB NUMBER: SEC2140, Saddleback #4 original Road								
PHASE: 100								
S	100-010-001	Undeground Work - Saddleback Dig	2,100.55	2,100.55	2,000.00	2,100.55	100.55-	100.00
100-010-001 TOTAL:			2,100.55	2,100.55	2,000.00	2,100.55	100.55-	
M	100-030-000	Undeground Work - Piping	162.00	162.00	0.00	162.00-	162.00	0.00
100-030-000 TOTAL:			162.00	162.00	0.00	162.00-	162.00	
M	100-040-000	Undeground Work - Wire Pull	111.00	111.00	0.00	111.00-	111.00	0.00
100-040-000 TOTAL:			111.00	111.00	0.00	111.00-	111.00	
O	100-099-001	Saddleback Dig - Sub Overhead	350.00	350.00	0.00	350.00-	350.00	0.00
100-099-001 TOTAL:			350.00	350.00	0.00	350.00-	350.00	
100 TOTAL:			2,723.55	2,723.55	2,000.00	1,477.55	522.45	
SEC2140 TOTAL:			2,723.55	2,723.55	2,000.00	1,477.55	522.45	
REPORT TOTAL:			2,723.55	2,723.55	2,000.00	1,477.55	522.45	

The enhanced report changes and data elements are as follows:

- The 'Transaction-To-Date' column is re-titled 'Costs From MM-DD-YY' (the date is the transaction starting date on the selection screen)
- 'Job-To-Date Cost' (can include future postings if selected)
- The 'Original Estimated Cost' column is re-titled 'Proj Cost Variance' (calculated as Buyout minus Projected Total Cost)
- The 'Revised Estimated Cost' column is re-titled 'Buyout'
- Percent Complete (actual percent complete from Cost Code Detail file)
- Projected Total Cost (calculation is changed as follows: If % Complete equals 0, then Projected Total Cost is Buyout minus Job-To-Date Cost. If % Complete is greater than 0, then Projected Total Cost is Job-To-Date Cost divided by % Complete)
- Cost Code Description is changed to the Job Masterfile Description
- Subtotals by Cost Code within Phase.

The report totals by Job Number, the **first** segment of the Cost Code (called Phase) and Cost Code/Cost Type (see Specific Purpose Rule). The report also subtotals within Phase.

If 'Use Alternate Calculation' is checked, then Percent Complete will perform the following calculation whenever the Percent Complete value in the Cost Code Detail file is zero:

$$\text{Job-To-Date Cost} / \text{Buyout} * 100$$

When 'Enhanced Summary' is selected, the report will print sub-totals within Phase only and the Percent complete column will print only if the 'Use Alternate Calculation' box is checked. (Figure 12)

Edwardson Electric Company							
CUSTOM J/C DETAIL REPORT - ENHANCED SUMMARY							
FOR ALL TRANSACTION DATES							
COST CODE	DESCRIPTION	COSTS FROM	J-T-D COST	BUYOUT	PROJ TOTAL COST	PROJ COST VARIANCE	% COMPLETE
JOB NUMBER: SEC2140, Saddleback Hospital Remodel							
PHASE: 100							
	Undeground Work - Backhoe Dig	100-010-001 TOTAL:	2,100.55	2,100.55	2,000.00	0.00	105.03
	Undeground Work - Piping	100-030-000 TOTAL:	162.00	162.00	0.00	0.00	0.00
	Undeground Work - Wire Pull	100-040-000 TOTAL:	111.00	111.00	0.00	0.00	0.00
	Backhoe Dig - Sub Overhead	100-099-001 TOTAL:	350.00	350.00	0.00	0.00	0.00
		100 TOTAL:	2,723.55	2,723.55	2,000.00	0.00	
		SEC2140 TOTAL:	2,723.55	2,723.55	2,000.00	0.00	
		REPORT TOTAL:	2,723.55	2,723.55	2,000.00	0.00	

**Budget Review**

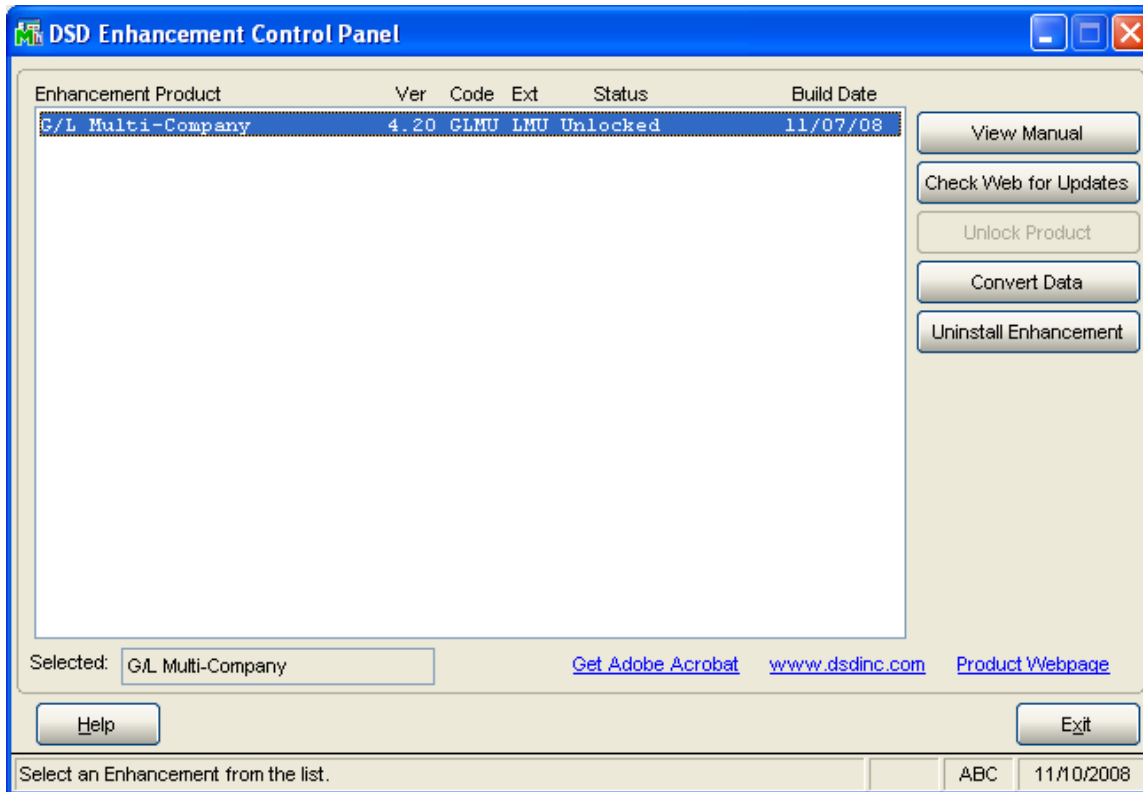
The Budget Review format is very similar to the non-enhanced report except for the following differences:

- It has an extra column called '% Complete'
- The 'Proj Cost to Complete' column has been replaced by the 'Projected Total Cost' column, which is calculated as: Job-To-Date Cost/Percent Complete
- The 'Rev. Est. Cost' column has been re-titled 'Buyout'

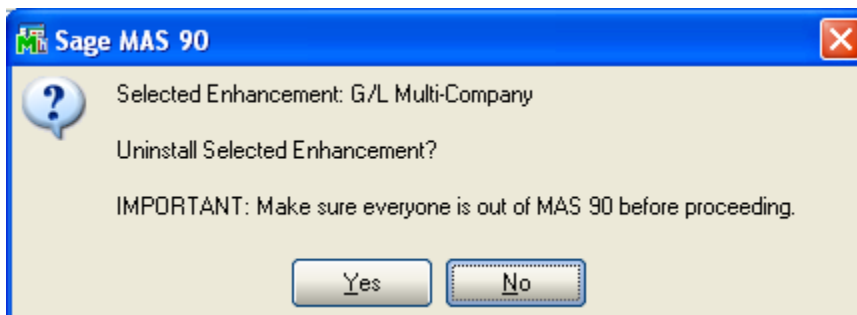
Edwardson Electric Company								
BUDGET REVIEW								
FOR ALL TRANSACTION DATES								
COST TYPE	COST CODE	DESCRIPTION	T-T-D COST	J-T-D COST	ORIG ESTD COST	BUYOUT	PROJECTED TOTAL COST	% COMPLETE
JOB NUMBER: SEC2140, Saddleback Hospital Remodel								
PHASE: 100								
S	100-010-001	Undeground Work - Backhoe Dig	2,100.55	2,100.55	2,000.00	2,000.00	2,100.55	100.00
M	100-030-000	Undeground Work - Piping	162.00	162.00	0.00	0.00	0.00	0.00
M	100-040-000	Undeground Work - Wire Pull	111.00	111.00	0.00	0.00	0.00	0.00
O	100-099-001	Backhoe Dig - Sub Overhead	350.00	350.00	0.00	0.00	0.00	0.00
		100 TOTAL:	2,723.55	2,723.55	2,000.00	2,000.00	2,100.55	
		SEC2140 TOTAL:	2,723.55	2,723.55	2,000.00	2,000.00	2,100.55	
		REPORT TOTAL:	2,723.55	2,723.55	2,000.00	2,000.00	2,100.55	

## Section E: Uninstall DSD Enhancements

A DSD Enhancements Uninstall Utility has been provided for the purposes of removing DSD Enhancements from your Sage 100 System. This utility may be accessed from the **DSD Enhancement Control Panel** menu option on the **Library Master / Utilities** menu.

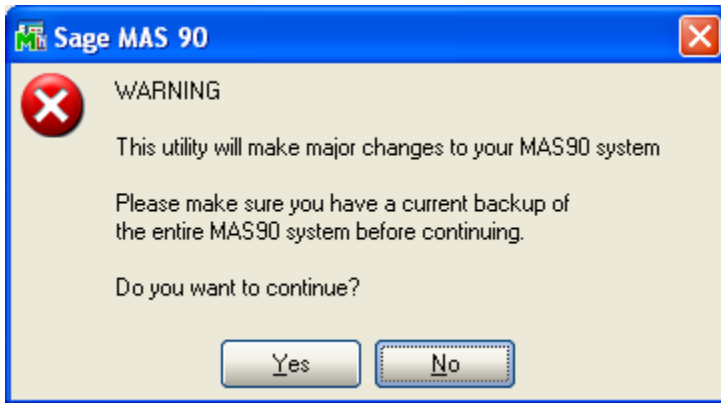


When accessing the **DSD Utility Suite**, select the enhancement that you wish to Uninstall, and then select the **Uninstall Enhancement** button. The following message box will appear:



Select **No** to exit the Uninstall Process.  
Select **Yes** to continue with the Uninstall Process.

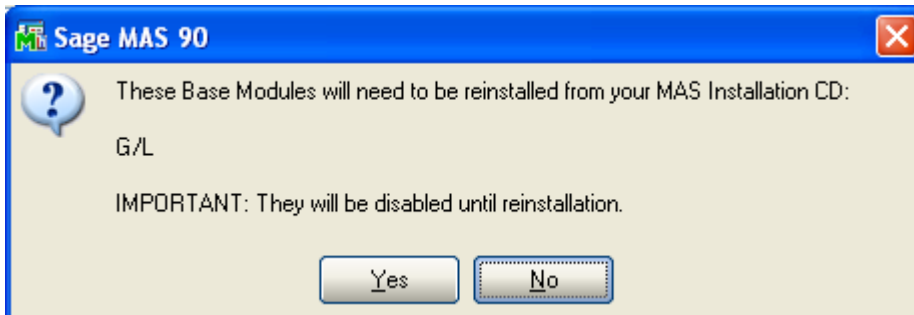
The following message box will appear, to remind you that a complete backup of your entire Sage 100 system should be completed prior to uninstalling a DSD product.



Select **No** to exit the Uninstall Process.  
Select **Yes** to continue with the Uninstall Process.

**After the Uninstall of the DSD Enhancement, you MUST reinstall certain standard Sage 100 modules, followed by reinstallation of MAS Service Packs / Updates, if applicable.**

The following message box will appear, and will display which of those specific Sage 100 modules you must reinstall afterwards.

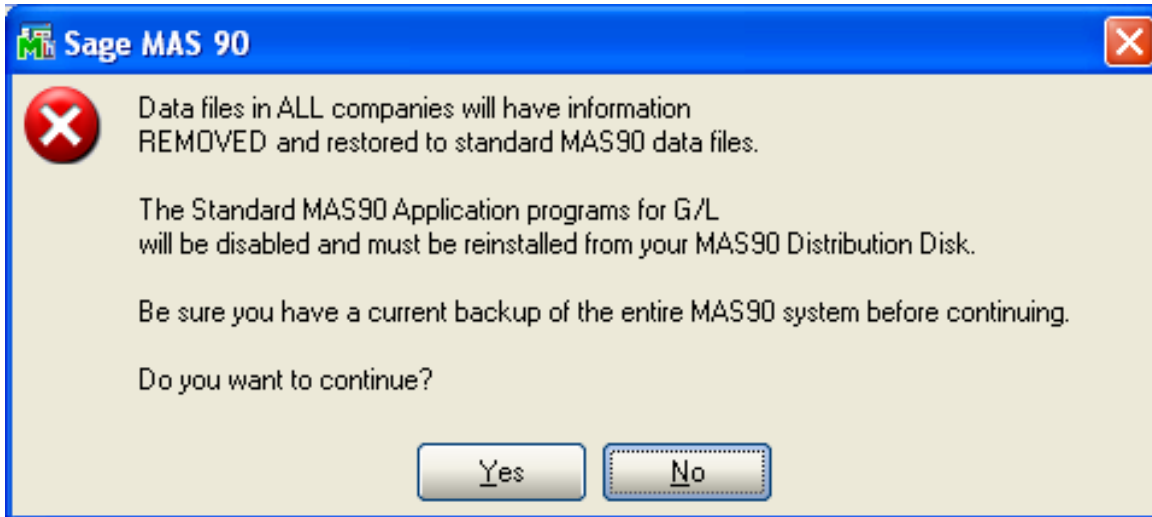


Select **No** to exit the Uninstall Process.  
Select **Yes** to continue with the Uninstall Process.

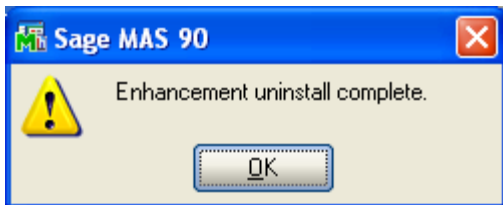
The following message box will appear, displaying the final warning message.

Select **No** to exit the Uninstall Process.

Select **Yes** to continue with the Uninstall Process. At this point, the DSD Enhancement will be removed from the Sage 100 system.



After completion of the Uninstall, the following message box will appear. Select OK to continue.



Now that the Uninstall process is completed, you must:

- Reinstall the applicable standard Sage 100 modules
- Reinstall the latest Sage 100 Service Pack/Updates, if applicable.
- Reinstall any other DSD Enhancements or Developer products that are affected from the reinstallation of the standard Sage 100 module(s).

## License Agreement

---

**IMPORTANT:** THIS SOFTWARE IS LICENSED BY DSD BUSINESS SYSTEMS, INC. TO CUSTOMERS FOR THEIR USE ONLY IN ACCORDANCE WITH THE TERMS SET FORTH IN THIS CUSTOMER LICENSE AGREEMENT. OPENING OR USING THIS PACKAGE CONSTITUTES ACCEPTANCE OF THESE TERMS. IF THE TERMS OF THIS LICENSE ARE NOT ACCEPTABLE, THE CUSTOMER MAY OBTAIN A FULL REFUND OF ANY MONEY PAID IF THIS UNUSED, UNOPENED PACKAGE IS RETURNED WITHIN TEN (10) DAYS TO THE DEALER FROM WHICH IT WAS ACQUIRED.

1. **LICENSE. DSD BUSINESS SYSTEMS, INC.,** a California corporation as Licensor and owner hereby agrees to grant you as Licensee a non-exclusive license to use the enclosed software subject to the terms and restrictions set forth in this License Agreement. Title in and ownership of all programs and program enhancements or modifications written by DSD Business Systems, Inc. shall remain at all times vested in DSD Business Systems, Inc. The right granted by this Customer License Agreement and your payment of the non-refundable License fee is the right to use the Program in accordance with the terms of this Customer License Agreement. Delivery of a copy of the Program to you is made solely to enable you to exercise this right.
2. **COPYRIGHT.** This Program is copyrighted and all rights are reserved by DSD BUSINESS SYSTEMS, INC. and SAGE, INC. You may not copy or reproduce any part of the Program except to copy the Program for backup purposes. If you make a backup copy you must reproduce and include the copyright notice on it. The distribution of the product is intended for the use of the original Licensee only and for use only on the computer systems specified. Lawful users of this Program are hereby licensed only to read the Program from its medium into the memory of a computer only for the purpose of executing the program.

The documentation is also copyrighted and all rights are reserved. This document may not, in whole or in part, be copied, photocopied, reproduced, translated, transmitted or reduced to any electronic medium of machine readable form without prior consent, in writing, from DSD BUSINESS SYSTEMS, INC.

The Licensee recognizes that DSD BUSINESS SYSTEMS, INC. has expended considerable time, effort and money to develop the licensed Software and Manual and that DSD BUSINESS SYSTEMS, INC. will be substantially damaged by its unauthorized use, sale or distribution. In addition to recovery of all damages and the obtaining of injunctive relief as provided by law, in the event legal action must be taken to enforce this provision, the Licensee will pay DSD BUSINESS SYSTEMS, INC. all reasonable legal fees incurred in enforcing the rights of DSD BUSINESS SYSTEMS, INC. under this provision.

3. **RESTRICTIONS ON USE AND TRANSFER.** The original and any backup copies of the Program and its documentation are to be used only in connection with a single computer or network fileserver. You may physically transfer the Program from one computer to another, provided that the Program is used in connection with only one computer or network fileserver at a time. You may not distribute copies of the Program Documentation to others. The Program is to be used exclusively for business purposes and not for personal, family or household use. YOU MAY NOT USE, COPY, MODIFY, OR TRANSFER THE PROGRAM, IN WHOLE OR IN PART, EXCEPT AS EXPRESSLY PROVIDED FOR IN THIS LICENSE AGREEMENT. IN ADDITION YOU MAY NOT MODIFY, ADAPT, TRANSLATE, REVERSE ENGINEER, DECOMPILE, DISASSEMBLE THE PROGRAM, OR CREATE ANY DERIVATIVE WORK BASED UPON THE PROGRAM.
4. **WARRANTY.** DSD BUSINESS SYSTEMS, INC. software is licensed "as is" with no warranties of any kind, either expressed or implied, other than the following: DSD BUSINESS SYSTEMS will repair any bugs or flaws found in the software. Flaws of a critical nature which affect the basic functionality of the software will be repaired on an "emergency" basis, with a corrected distribution diskette sent via UPS Blue or equal. Flaws of a non-critical or cosmetic nature will be repaired on a timely basis, and a corrected distribution diskette sent via UPS ground or regular mail. All incidental or consequential damages that result from any defect in the software, even if DSD Business Systems, Inc. has been advised of the possibility of such damages will be assumed by you.

5. **LIMITED WARRANTY FOR DISKETTES.** To the original licensee only, DSD BUSINESS SYSTEMS, INC. warrants the magnetic diskette on which the Program is recorded to be free from defects in materials and faulty workmanship under normal use and service for a period of ninety days from the date the Program is delivered. Any implied warranties of merchantability and fitness for a particular purpose are limited in duration to the period of ninety (90) days from the date of delivery. If, during this 90 day period, a defect in the diskette should occur, the diskette may be returned DSD BUSINESS SYSTEMS, INC., 5120 Shoreham Place, Suite 280, San Diego, California, 92122, or to any authorized DSD BUSINESS SYSTEMS, INC. Dealer, and the diskette will be replaced without charge to you, provided that you have previously returned the Warranty Registration Card along with a copy of your sales receipt for the Program.
6. **NO OTHER WARRANTIES.** No dealer or distributor of DSD BUSINESS SYSTEMS, INC. products or any agent of DSD BUSINESS SYSTEMS, INC. is authorized to make any representation of warranty with respect to the Program except those expressly stated in the Customer License Agreement.
7. **LIMITATION OF LIABILITY.** Neither DSD BUSINESS SYSTEMS, INC. nor anyone else who has been involved in the creation, production or delivery of this program shall be liable for any direct, incidental or consequential damages.
8. **TERM.** This license is effective until terminated. You may terminate it at any time by returning the Program and Documentation together with all copies, modifications and merged portions in any form to DSD BUSINESS SYSTEMS, INC. The license will also be terminated by DSD BUSINESS SYSTEMS, INC. immediately and without notice if you fail to comply with any term or condition of this License Agreement.
9. **ACKNOWLEDGMENT.** Your opening this package, use of this program or signature on the warranty registration card acknowledges that you have read this customer license agreement and agree to its terms. You further agree that the license agreement is the complete and exclusive statement of the agreement between yourself and DSD BUSINESS SYSTEMS, INC. and supersedes any proposal or prior agreement, oral or written, and any other communications between yourself and DSD BUSINESS SYSTEMS, INC or dealers and distributors of DSD BUSINESS SYSTEMS, INC products relating to the subject matter of this agreement.
10. **ASSIGNMENT.** You may not sublicense this license or the Program. You may not rent this Program or the use of the Program. You may not transfer this copy of the Program unless the recipient agrees in writing (and a copy of such acceptance is sent to DSD BUSINESS SYSTEMS, INC., 5120 Shoreham Place, Suite 280, San Diego, California, 92122) to accept all of the terms of this Customer License Agreement. Any attempt by you to otherwise rent, sublicense, assign or transfer any of the rights, duties or obligation hereunder is void and may be the cause for immediate termination of the license. DSD BUSINESS SYSTEMS, INC. may assign any of its rights and obligation under this agreement to any party without notice to you.

## Fax Transmittal Form

---

To:	<b><i>DSD Business Systems Customer Service</i></b>		Fax:	<b><i>858/550-4900</i></b>
From:	Name:		Phone:	
	Company:		Fax:	
Date:	/ /	# Pgs Including this Page:		
Subject:	Check One: <input type="checkbox"/> Product Problem <input type="checkbox"/> Suggestions			
Product:	<b><i>EEEE Date Sensitive Job Cost Reports</i></b>		Version:	<b><i>5.00</i></b>

This page may be copied