



# **DSD Business Systems**

**Sage 100 Enhancements**

**IT09**

**Enhanced View Item Detail**

**IT-1009**

**Version 5.40**



Information in this document is subject to change without notice.

Copyright 1993-2017, DSD Business Systems All rights reserved.

Enhanced View Item Detail User's Manual  
Version 5.40

30 March, 2018

DSD Business Systems  
8787 Complex Drive  
Suite 400  
San Diego, CA 92123  
858/550-5900 8:00am to 5:00pm PST  
858/550-4900 Fax

### **Trademarks**

**ProvideX®** is a Trademark of Sage Software.

**Windows** is a trademark of Microsoft Corporation.

**Sage 100®** is a registered trademark of Sage Software.

**PXPlus®** is a registered trademark of PVX Plus technologies

All other product names and brand names are service marks, and/or trademarks or registered trademarks of their respective companies.

This documentation and the software described herein, is prepared and published under license. Sage Software has not tested or verified either the software or any representation in this documentation regarding the software. Sage Software does not make any warranty with respect to either this documentation or the software described herein, and specifically disclaims any warranty, express or implied, with respect hereto, including the warranties of fitness for a particular purpose and merchantability.

---

## Table of Contents

---

<b>SECTION A: INTRODUCTION</b>	<b>4</b>
WEB RESOURCES .....	4
SUPPORT .....	4
ENHANCED VIEW ITEM DETAIL FEATURES .....	5
<b>SECTION B: GETTING STARTED</b>	<b>6</b>
REQUIRED LEVELS.....	6
INSTALLATION.....	6
DSD ENHANCEMENT CONTROL PANEL.....	8
<b>SECTION C: SETUP</b>	<b>10</b>
<b>SECTION D: SYSTEM OPERATIONS</b>	<b>12</b>
<b>SECTION E: UNINSTALL DSD ENHANCEMENTS</b>	<b>18</b>

## Section A: Introduction

---

This manual contains a description and instructions for this DSD product. Operating instructions are included for the features added by this product to Sage 100. For instructions on using Sage 100, refer to the appropriate Sage 100 manual, or call your Sage 100 reseller. DSD Business Systems offers excellent Sage 100 support, at an hourly rate.

### Web Resources

DSD web site: <http://www.dsdinc.com>

The Enhancement page contains:

- Current Release Schedule*
- Purchasing Information*
- Installation Instructions*
- Product Support*
- Enhancement Links*

EEEE Enhanced View Item Detail:

<http://www.dsdinc.com/enh/pages/EEEE.htm>

The product web page contains:

- Product Description*
- Web Links*
- Current Product Version Table*
- Product Installation File Download*
- Product Manual in .pdf Format*
- Revision History*
- FAQ*

### Support

DSD provides product support through Sage 100 resellers. Support is provided for the current version. Older versions are supported at an hourly rate. DSD's telephone number is **858-550-5900**. Fax: **858-550-4900**.

For a hard error, where the program displays an error dialog, report:

- Error number.*
- Program name.*
- Line number.*
- Program version.*
- Exact sequence that caused the error, including menus and menu selections.*
- Other pertinent information.*

If leaving a message or faxing, please include:

*Your name.*

*Your phone number (and fax if applicable) and extension.*

It is possible to be unable to duplicate a problem, because of data corruption or because we have not exactly duplicated a particular operating environment. In such circumstances, we can only continue to try to fix the problem if we can either access the system remotely or by some other to duplicate the system.

### ***Enhanced View Item Detail Features***

This Extended Solution modifies the View Item Detail page of e-Business Manager with the following options:

- IT Enable a warehouse
- Break out the quantity available per item by warehouse
- Display the quantity available for Kit items as Not Available
- Display expected PO Receipt information

## Section B: Getting Started



• If you reinstall or upgrade one of the Sage 100 modules listed in the following table, you must also reinstall this Enhancement.

• Enhancements from different Sage Developers are generally not designed to work together. If installed together, problems are likely to occur.

- Check with DSD before installing more than one Enhancement.

### Required Levels

Sage 100 Module	Module Required	Required Level
I/T	Y	5.40

### Installation

1. **Back-up:** Exit all Sage 100 sessions. Back-up existing Sage 100 data.
2. **Check Levels:** Sage 100 module levels **must match** those listed above.
3. **Run Enhancement Setup Program:** Save the executable installation program (sent to you or downloaded from our website) in a convenient location on the Sage 100 server. Launch the program from Windows Explorer or by selecting Start/Run, and then browse for the file in the location you saved it. Follow on-screen instructions.
4. **Send your Sage Serial Number to your DSD Representative:** Send your Sage Serial Number to your DSD representative in order for us to send you back the encrypted keys to unlock your system. This serial number can be found in Library Master\Setup\System Configuration, Tab 3. Registration as Serial Number.
5. **Re-Start Sage 100:** Sage 100 will be updated.
6. **Unlock the Enhancement:** DSD Enhancements must be unlocked to run. When any part of the Enhancement is run for the first time, the **DSD Enhancement License Agreement and Activation** window will appear. Follow the steps shown on that window. *You can click the Help button for more detailed instructions.*

**Note:** On the next page is a screenshot of the DSD Enhancement License Agreement and Activation window.

After accepting the License Agreement, you can then select the type of unlocking that you'd prefer. The choices are File, Web, Demo and Manual Entry.

**File Unlock:** After receiving your encrypted serial number key file from DSD, and placing that file in the MAS90/SOA directory, selecting this option will unlock all products keys contained in the file. This means you can unlock all enhancements at once using this option.

**Web Unlock:** If the system that is running the DSD Enhancement *has web access* and you *have sent DSD your Sage Serial number*, you can unlock the Enhancement without assistance using Web Unlock. When this option is selected, the program will attempt to download encrypted serial number key file from DSD and then proceed to unlock all enhancements contained in the file.

- The Sage 100 system that is being used must have web access for this option to be effective.
- You can send your Sage Serial Number to your DSD Enhancements sales representative.

**Demo Unlock:** If a Demo mode is available for the Enhancement you're running, you will be able to Demo unlock the product without assistance from DSD for demo purposes.

- Creating a Demo Unlock is a good way to temporarily unlock DSD Enhancements off-hours, if you do not have web or email access. Later, you can unlock the product fully, during business hours.

**Manual Entry Unlock:** If you want to unlock a single enhancement using a single encrypted key, you can select this option and enter the 64 character key you receive from DSD by copy and paste.

**Note:** You can also unlock a DSD Enhancement through the [DSD Enhancement Control Panel](#) found on the Library Master Utilities Menu. Then, select the Enhancement with your mouse from the list of Enhancements and click the **Unlock Product** button on the right side of the window.

- Convert Data:** After unlocking, the DSD Conversion Wizard will appear. Follow on-screen instructions to complete data conversion. *You can exit the conversion program without converting data. The Enhancement will not proceed, however, until data is converted. If you enter an enhanced program and data has not been converted, the conversion program will run again.*

### DSD Enhancement Control Panel

Starting with version 3.61, all DSD Enhancement products include DSD's Enhancement Control Panel. The **DSD Enhancement Control Panel is accessed from the Library Master Utilities menu.**

The DSD Enhancement Control Panel is a simple to use yet powerful system to help maintain DSD Enhancements installed on a Sage 100 system. To use it, select an Enhancement product from the list on the window and then click the button, on the right side of the window, which corresponds with the desired task.

**View Manual:** This button will display the product manual for the selected Enhancement using Adobe Acrobat. For this to be possible, the PDF file for the corresponding manual must be in the "MAS90/PDF" folder in the Sage 100 system. If the file is not present, and the system has web access, the correct PDF file will be automatically downloaded from the DSD website, put into the "MAS90/PDF" folder and then displayed.

**Check the Web for Updates:** This button will check the DSD website to see what the current build is the selected Enhancement and alert the user if a later version is available. *This requires an internet connection on the Sage 100 system.*

**Unlock Product:** This will cause the DSD Enhancement License Agreement and Activation window to appear. Using this window is described on the previous page. *This button is disabled if the selected Enhancement is already unlocked or if unlocking is not required.*

**Unlock All Products:** This will cause the DSD Enhancement All License Agreement and Activation window to appear. This window is similar to the one described on the previous page, but has only web and file as options to unlock. *This button is never disabled.*

**Convert Data:** After verification, the selected Enhancement's data conversion program will run. Data conversion is non-destructive, and may be triggered any number of times. Sometimes this is required to fix data records imported or updated from a non-enhancement installation.





**Multi-Convert Data:** Multiple Companies can be converted at the same time for a given Enhancement. *(If you have a large number of Companies to convert, please do in batches of 20 or fewer due to memory limitations.)*



**Help:** The Help button, located at the bottom right of the window, opens an HTML help file.

**Get Adobe Acrobat:** Opens the Adobe Acrobat website to the page where Acrobat can be downloaded and installed.

**Uninstall Enhancement** If this option is available, then selecting this button will start the un-install process, removing the enhancement from the system. (for more information see [Uninstall DSD Enhancements](#))

## Section C: Setup

Upon completion of software installation, you will need to access the DSD Extended Solutions Setup from the e-Business Manager Setup menu. Select this part number and the Setup screen for this Extended Solution will appear. Check the 'Enable DSD Extended Solution' box to activate this Extended Solution.

**IT-1009 Setup Options**

**Enhanced View Item Detail**

Enable DSD Extended Solution ☒ Level 5.40

IT Enable by Warehouse ☐

Display Qty Available by Warehouse ☐

Display Qty Available as 'N/A' for Kits ☐

Display PO 'Receipts' Link ☐

Accept Cancel

Check this box to enable Enhanced View Item Detail

DSD ABC 3/27/2018

Answer the following prompts:

**IT Enable by Warehouse:** Check this box to select which warehouses will be included for Quantity Available. A new check box will be added to Warehouse Maintenance screen to Internet Enable.

**Display Quantity Available by Warehouse:** Check this box to list individual warehouses and quantities on the Item Detail page.

You must answer the 'Calculate Quantity Available' option in Web Template Options, Products to 'ALL' in order to select this option.

**Display Qty Available as 'N/A' for Kits:** Check this option to set the Quantity Available for Kit Items as 'N/A.'

**Display PO 'Receipts' Link:** Check this box to add a 'Receipts' link to the item detail page.

You should visit this Setup screen after each upgrade or reinstallation of this Extended Solution.

### Role Maintenance

The following Task has been added to e-Business Manager, Setup Options:

? Extended Solutions Setup



## Section D: System Operations

If you selected the option to IT Enable by Warehouse, a 'More' button will be added to the Warehouse Maintenance screen.

Click this button and you will be presented with Internet Enable Warehouse Selection that prompts:

When a value is defined in the 30 character IT Warehouse Description, then this Description will be used in place of the standard Warehouse Code and Description in e-Business Manager's View Item Detail.

'Internet Enabled' has been added to the Warehouse Code Listing.

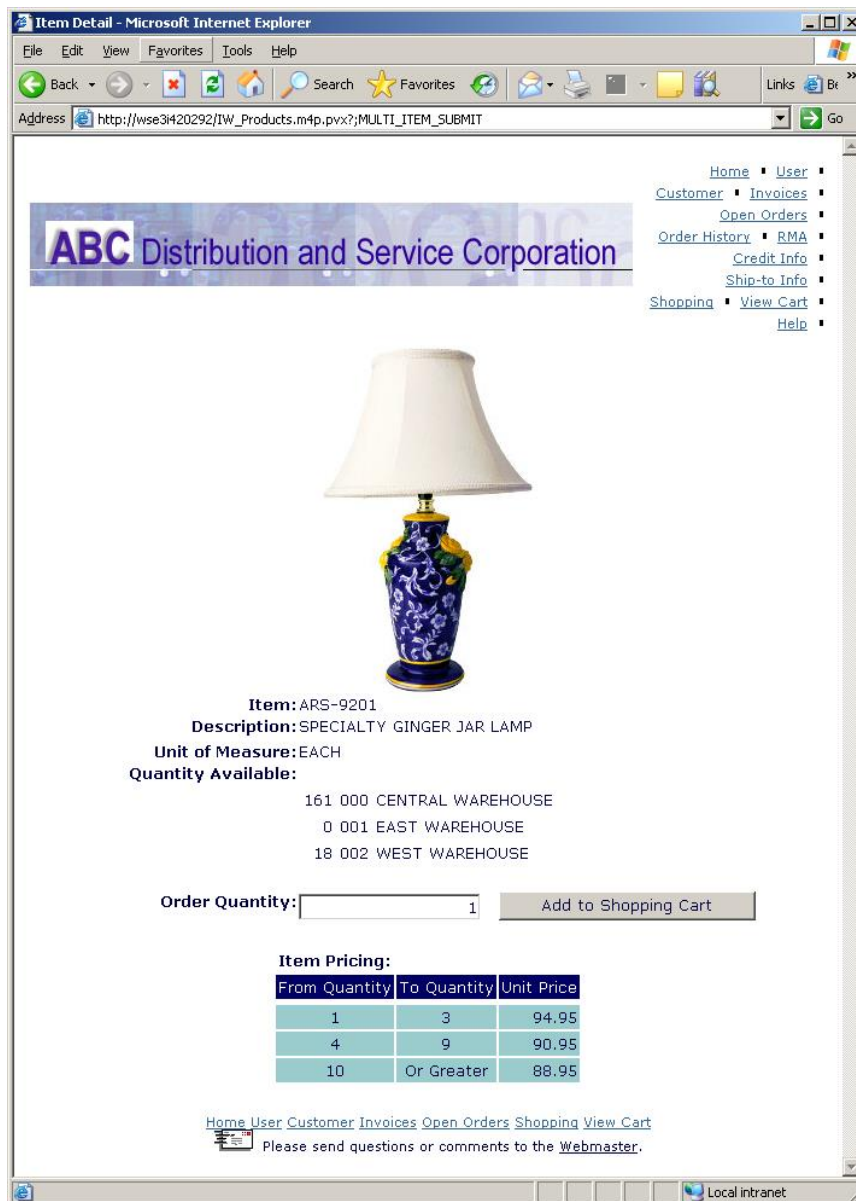
Sage OnLine Merchandise			
WAREHOUSE CODE LISTING			
WRHSE CODE	DESCRIPTION	SHIP-TO NAME AND ADDRESS	GL SEGMENT VALUE
000	MAIN WAREHOUSE	Sage Software, Inc. 56 Technology Irvine, CA 92618	000-00-01
Internet Enabled? No			

When 'Internet Enabled' is checked the Quantity Available calculations will use only the sum of the warehouses which are IT enabled.

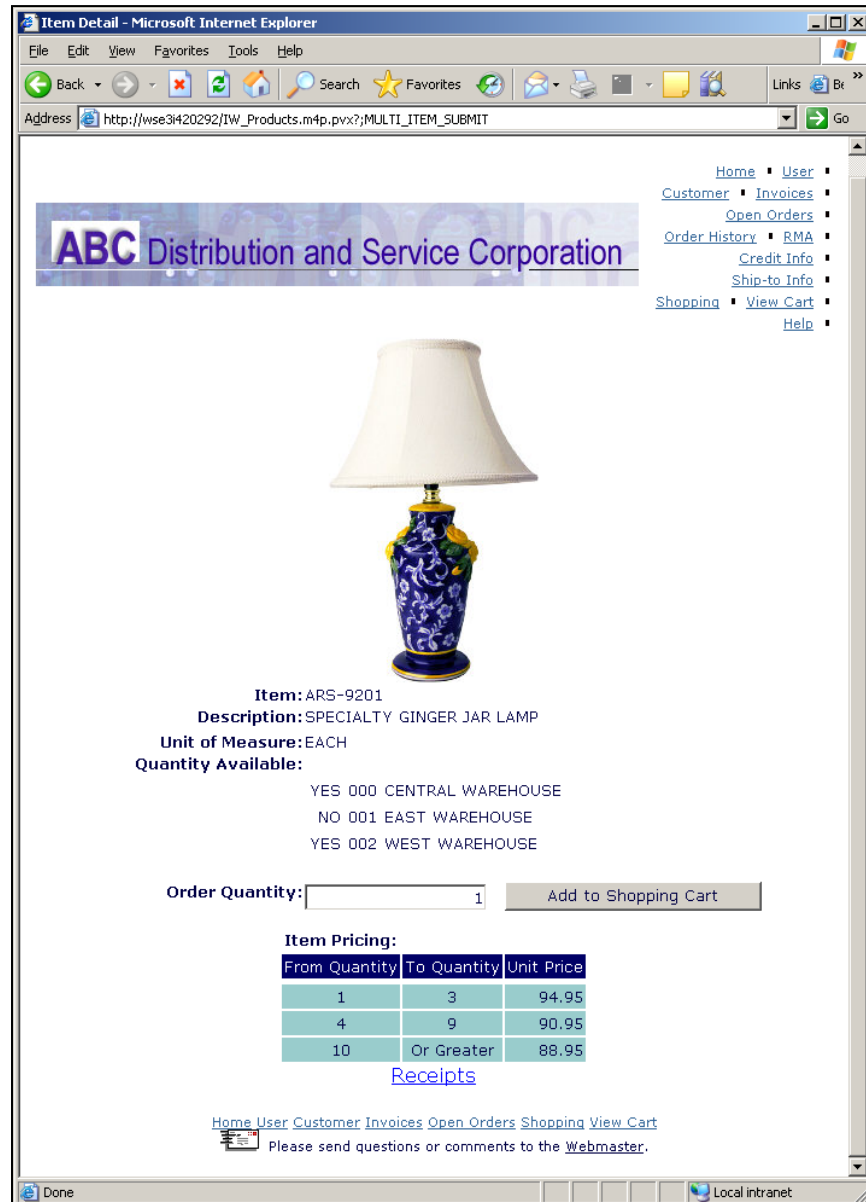
**Display Quantity Available by Warehouse**

When this option is selected, the Item Detail page will display the Quantity Available, Warehouse Code, and Warehouse Description for each warehouse that is Internet Enabled.

If used in conjunction with IT Enable by Warehouse, only those warehouses which are IT enabled will be listed. Below is an illustration of the results if you checked the standard e-Business Manager web template option to display actual quantity available. If the quantity is less than zero, we will display zero.



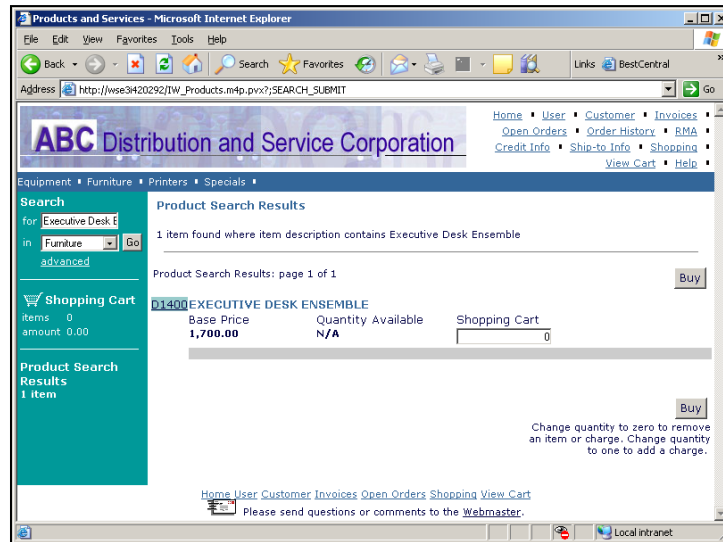
If you did not check that option in web template maintenance and instead defined 'Yes' for 'Item Currently Available' and 'No' for 'Item on Back Order' your results would look like the image below.



This is for display only; the internet customer will not be able to select a particular warehouse's items. The Shopping Cart will still use the warehouse defined for the IT Customer in A/R Customer Maintenance.

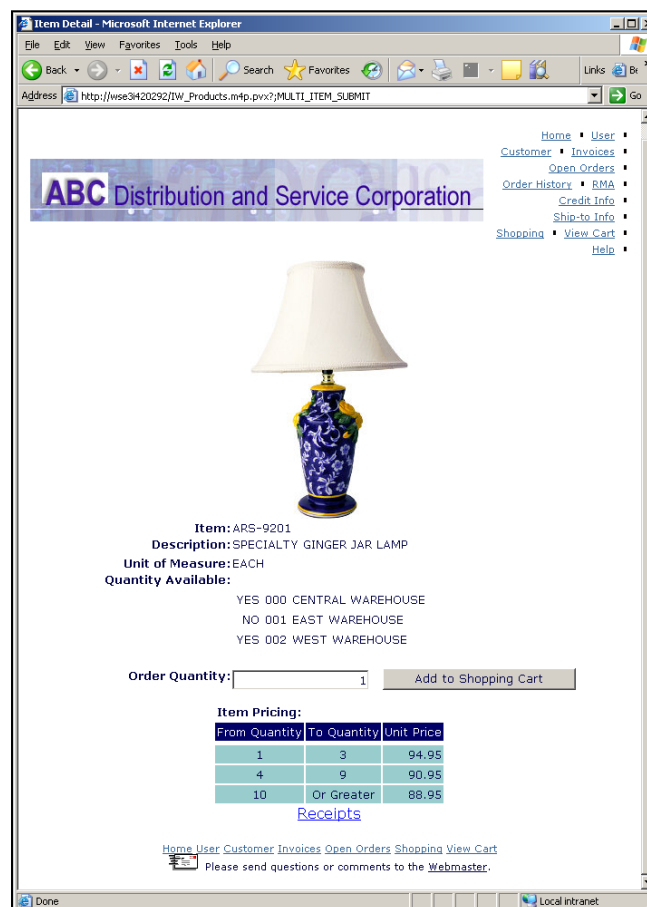
### Display Qty Available as 'N/A' for Kits

When this option is checked, Item Detail will display 'N/A' in the Quantity Available column for Kit items.

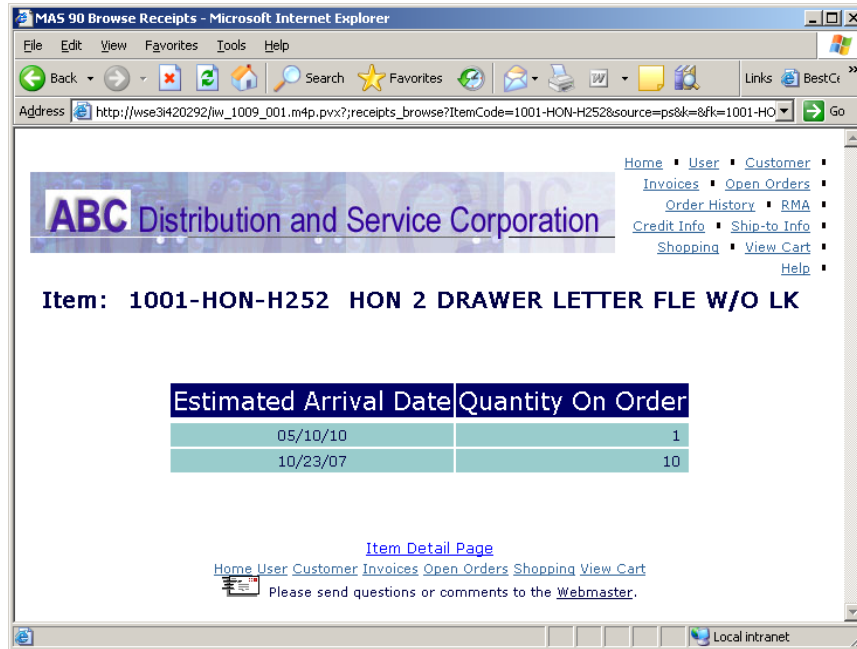


### Display PO Receipts Link

When this option is checked, the Item Detail page will have a new link labeled 'Receipts'.



Click this link to access the Browse Receipts page which displays a list of all open Purchase Orders containing this item along with its estimated date of arrival (Required Date from the purchase order line) and the quantity on order ('Qty Ordered' minus 'Qty Received').



Only those purchase orders where the quantity ordered less quantity received produces a value greater than zero will be included.

Click the 'Back' button on the browser or the 'Item Detail Page' link to return the Item Detail page.

### Visual Integrator

The files listed below have been added or changed in the Data Dictionary by this Extended Solution for Visual Integrator purposes.

**New File:** IM.Warehouse  
**Field:** InternetEnabled



ITWarehouseDesc

The Data Dictionary may contain other files and data fields that are not available without their corresponding Sage Software Extended Solutions installed.

### **ODBC Dictionary**

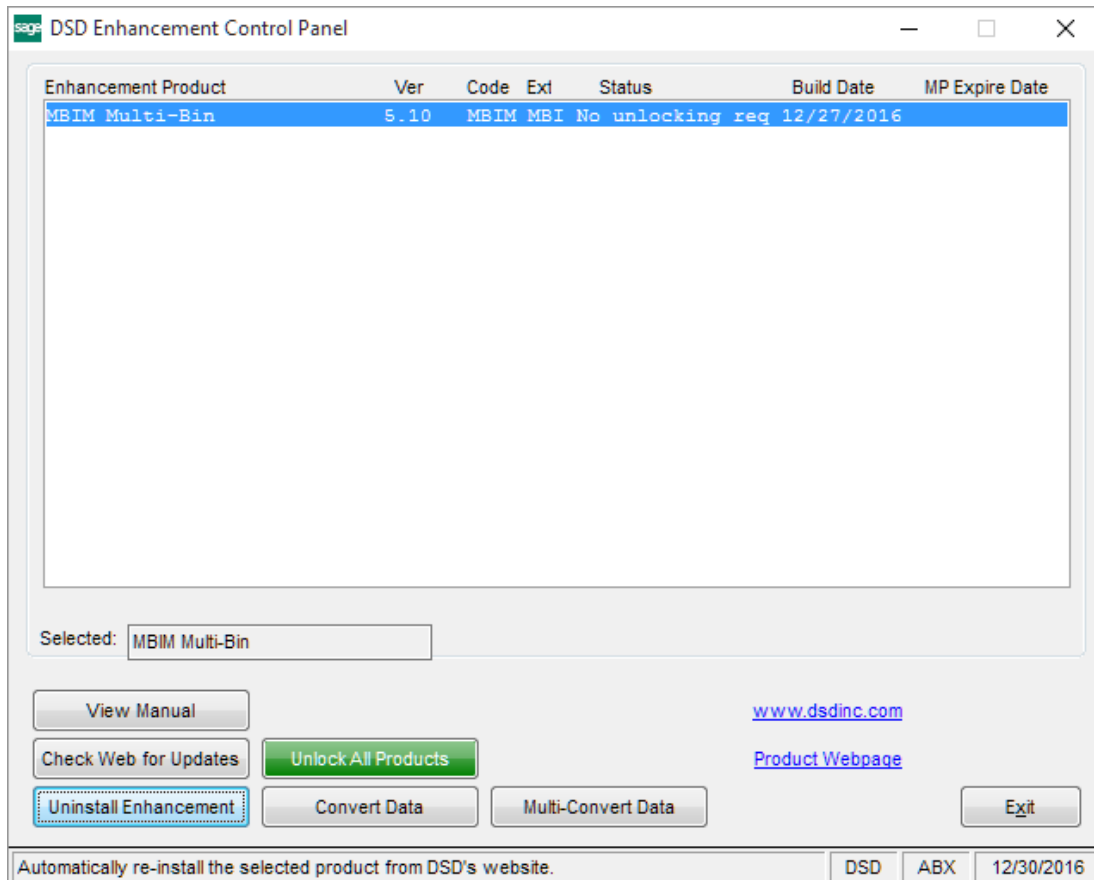
The files listed below have been added or changed in the ODBC Dictionaries by this Extended Solution for Crystal Reports purposes.

<i>File:</i>	<i>Field:</i>
IM_Warehouse	InternetEnabled
	ITWarehouseDesc

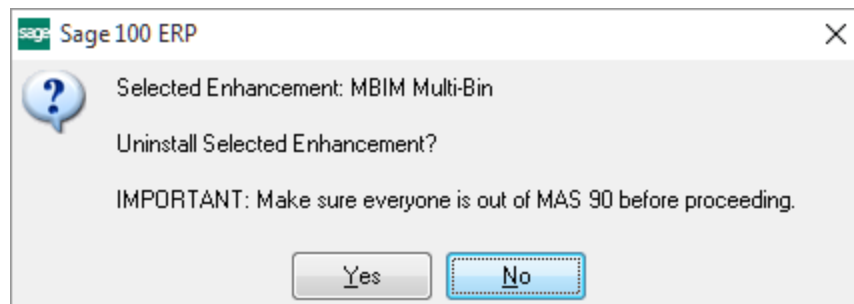
Be aware that the ODBC Dictionaries may contain other files and data fields that will be unavailable without their corresponding Extended Solutions installed.

## Section E: Uninstall DSD Enhancements

A DSD Enhancements Uninstall Utility has been provided for the purposes of removing DSD Enhancements from your Sage 100 System. This utility may be accessed from the **DSD Enhancement Control Panel** menu option on the **Library Master / Utilities** menu.

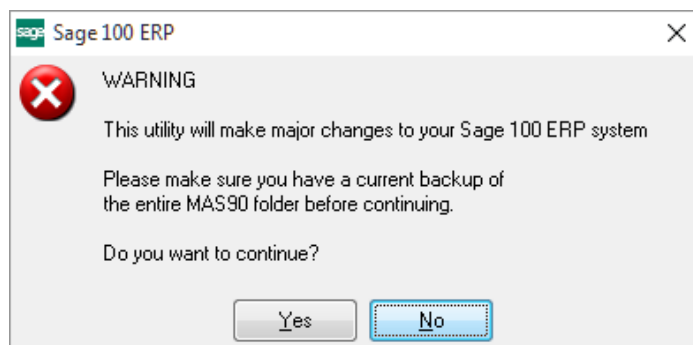


When accessing the **DSD Enhancement Control**, select the enhancement that you wish to Uninstall, and then select the **Uninstall Enhancement** button. The following message box will appear:



Select **No** to exit the Uninstall Process.  
Select **Yes** to continue with the Uninstall Process.

The following message box will appear, to remind you that a complete backup of your entire Sage 100 system should be completed prior to uninstalling a DSD product.



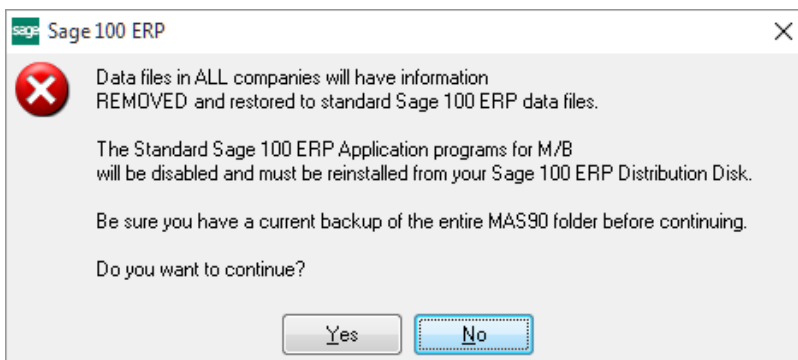
Select **No** to exit the Uninstall Process.  
Select **Yes** to continue with the Uninstall Process.

**After the Uninstall of the DSD Enhancement, you MUST reinstall certain standard Sage 100 modules, followed by reinstallation of Product Updates and Hot Fixes, if applicable.**

A message box will appear, and will display which of those specific Sage 100 modules you must reinstall afterwards.

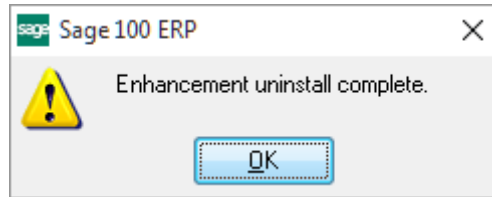
Select **No** to exit the Uninstall Process.  
Select **Yes** to continue with the Uninstall Process.

The following message box will appear, displaying the final warning message.



Select **No** to exit the Uninstall Process.  
Select **Yes** to continue with the Uninstall Process. At this point, the DSD Enhancement will be removed from the Sage 100 system.

After completion of the Uninstall, the following message box will appear. Select OK to continue.



Now that the Uninstall process is completed, you must:

- Reinstall the applicable standard Sage 100 modules
- Reinstall the latest Sage 100 Service Pack/Updates, if applicable.
- Reinstall any other DSD Enhancements or Developer products that are affected from the reinstallation of the standard Sage 100 module(s).