



DSD Business Systems

Sage 100 Enhancements

IT00

Internet Sales

IT-1000

Version 6.00



Information in this document is subject to change without notice.

Copyright 1993-2017, DSD Business Systems All rights reserved.

Internet Sales User's Manual
Version 6.00

4 April, 2018

DSD Business Systems
8787 Complex Drive
Suite 400
San Diego, CA 92123
858/550-5900 8:00am to 5:00pm PST
858/550-4900 Fax

Trademarks

ProvideX® is a Trademark of Sage Software.

Windows is a trademark of Microsoft Corporation.

Sage 100® is a registered trademark of Sage Software.

PXPlus® is a registered trademark of PVX Plus technologies

All other product names and brand names are service marks, and/or trademarks or registered trademarks of their respective companies.

This documentation and the software described herein, is prepared and published under license. Sage Software has not tested or verified either the software or any representation in this documentation regarding the software. Sage Software does not make any warranty with respect to either this documentation or the software described herein, and specifically disclaims any warranty, express or implied, with respect hereto, including the warranties of fitness for a particular purpose and merchantability.

Table of Contents

SECTION A: INTRODUCTION	4
WEB RESOURCES	4
SUPPORT	4
INTERNET SALES FEATURES.....	5
SECTION B: GETTING STARTED	6
REQUIRED LEVELS.....	6
INSTALLATION.....	6
DSD ENHANCEMENT CONTROL PANEL.....	8
SECTION C: SETUP	10
SECTION D: SYSTEM OPERATIONS	12
SECTION E: UNINSTALL DSD ENHANCEMENTS	19

Section A: Introduction

This manual contains a description and instructions for this DSD product. Operating instructions are included for the features added by this product to Sage 100. For instructions on using Sage 100, refer to the appropriate Sage 100 manual, or call your Sage 100 reseller. DSD Business Systems offers excellent Sage 100 support, at an hourly rate.

Web Resources

DSD web site: <http://www.dsdinc.com>

The Enhancement page contains:

- Current Release Schedule*
- Purchasing Information*
- Installation Instructions*
- Product Support*
- Enhancement Links*

EEEE Internet Sales:

<http://www.dsdinc.com/enh/pages/EEEE.htm>

The product web page contains:

- Product Description*
- Web Links*
- Current Product Version Table*
- Product Installation File Download*
- Product Manual in .pdf Format*
- Revision History*
- FAQ*

Support

DSD provides product support through Sage 100 resellers. Support is provided for the current version. Older versions are supported at an hourly rate. DSD's telephone number is **858-550-5900**. Fax: **858-550-4900**.

For a hard error, where the program displays an error dialog, report:

- Error number.*
- Program name.*
- Line number.*
- Program version.*
- Exact sequence that caused the error, including menus and menu selections.*
- Other pertinent information.*

If leaving a message or faxing, please include:

Your name.

Your phone number (and fax if applicable) and extension.

It is possible to be unable to duplicate a problem, because of data corruption or because we have not exactly duplicated a particular operating environment. In such circumstances, we can only continue to try to fix the problem if we can either access the system remotely or by some other to duplicate the system.

Internet Sales Features

This DSD Extended Solution allows salespeople access to customer data via the e-Business Manager module. Orders can be placed while viewing costs, adding line item discounts, and flagging items for drop-shipment. Access is limited to customers assigned to a specific salesperson.

The E-business Manager .order applet must be installed in order for this Extended Solution to function.

Section B: Getting Started



• If you reinstall or upgrade one of the Sage 100 modules listed in the following table, you must also reinstall this Enhancement.

• Enhancements from different Sage Developers are generally not designed to work together. If installed together, problems are likely to occur.

- Check with DSD before installing more than one Enhancement.

Required Levels

Sage 100 Module	Module Required	Required Level
I/T	Y	6.00
A/R	Y	6.00

Installation

1. **Back-up:** Exit all Sage 100 sessions. Back-up existing Sage 100 data.
2. **Check Levels:** Sage 100 module levels **must match** those listed above.
3. **Run Enhancement Setup Program:** Save the executable installation program (sent to you or downloaded from our website) in a convenient location on the Sage 100 server. Launch the program from Windows Explorer or by selecting Start/Run, and then browse for the file in the location you saved it. Follow on-screen instructions.
4. **Send your Sage Serial Number to your DSD Representative:** Send your Sage Serial Number to your DSD representative in order for us to send you back the encrypted keys to unlock your system. This serial number can be found in Library Master\Setup\System Configuration, Tab 3. Registration as Serial Number.
5. **Re-Start Sage 100:** Sage 100 will be updated.
6. **Unlock the Enhancement:** DSD Enhancements must be unlocked to run. When any part of the Enhancement is run for the first time, the **DSD Enhancement License Agreement and Activation** window will appear. Follow the steps shown on that window. *You can click the Help button for more detailed instructions.*

Note: On the next page is a screenshot of the DSD Enhancement License Agreement and Activation window.

After accepting the License Agreement, you can then select the type of unlocking that you'd prefer. The choices are File, Web, Demo and Manual Entry.

File Unlock: After receiving your encrypted serial number key file from DSD, and placing that file in the MAS90/SOA directory, selecting this option will unlock all products keys contained in the file. This means you can unlock all enhancements at once using this option.

Web Unlock: If the system that is running the DSD Enhancement *has web access* and you *have sent DSD your Sage Serial number*, you can unlock the Enhancement without assistance using Web Unlock. When this option is selected, the program will attempt to download encrypted serial number key file from DSD and then proceed to unlock all enhancements contained in the file.

- The Sage 100 system that is being used must have web access for this option to be effective.
- You can send your Sage Serial Number to your DSD Enhancements sales representative.

Demo Unlock: If a Demo mode is available for the Enhancement you're running, you will be able to Demo unlock the product without assistance from DSD for demo purposes.

- Creating a Demo Unlock is a good way to temporarily unlock DSD Enhancements off-hours, if you do not have web or email access. Later, you can unlock the product fully, during business hours.

Manual Entry Unlock: If you want to unlock a single enhancement using a single encrypted key, you can select this option and enter the 64 character key you receive from DSD by copy and paste.

Note: You can also unlock a DSD Enhancement through the [DSD Enhancement Control Panel](#) found on the Library Master Utilities Menu. Then, select the Enhancement with your mouse from the list of Enhancements and click the **Unlock Product** button on the right side of the window.

- Convert Data:** After unlocking, the DSD Conversion Wizard will appear. Follow on-screen instructions to complete data conversion. *You can exit the conversion program without converting data. The Enhancement will not proceed, however, until data is converted. If you enter an enhanced program and data has not been converted, the conversion program will run again.*

DSD Enhancement Control Panel

Starting with version 3.61, all DSD Enhancement products include DSD's Enhancement Control Panel. The **DSD Enhancement Control Panel is accessed from the Library Master Utilities menu.**

The DSD Enhancement Control Panel is a simple to use yet powerful system to help maintain DSD Enhancements installed on a Sage 100 system. To use it, select an Enhancement product from the list on the window and then click the button, on the right side of the window, which corresponds with the desired task.

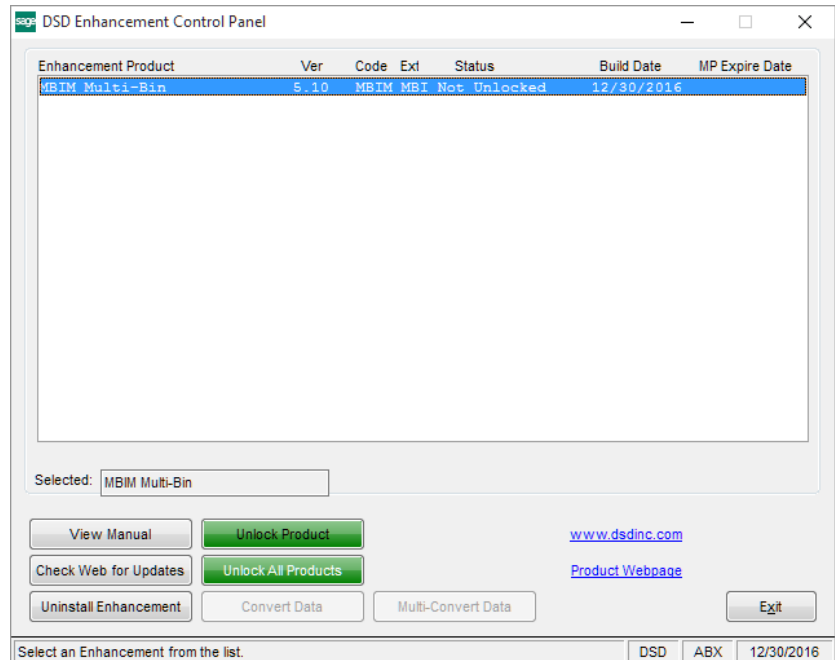
View Manual: This button will display the product manual for the selected Enhancement using Adobe Acrobat. For this to be possible, the PDF file for the corresponding manual must be in the "MAS90/PDF" folder in the Sage 100 system. If the file is not present, and the system has web access, the correct PDF file will be automatically downloaded from the DSD website, put into the "MAS90/PDF" folder and then displayed.

Check the Web for Updates: This button will check the DSD website to see what the current build is the selected Enhancement and alert the user if a later version is available. *This requires an internet connection on the Sage 100 system.*

Unlock Product: This will cause the DSD Enhancement License Agreement and Activation window to appear. Using this window is described on the previous page. *This button is disabled if the selected Enhancement is already unlocked or if unlocking is not required.*

Unlock All Products: This will cause the DSD Enhancement All License Agreement and Activation window to appear. This window is similar to the one described on the previous page, but has only web and file as options to unlock. *This button is never disabled.*

Convert Data: After verification, the selected Enhancement's data conversion program will run. Data conversion is non-destructive, and may be triggered any number of times. Sometimes this is required to fix data records imported or updated from a non-enhancement installation.



Multi-Convert Data: Multiple Companies can be converted at the same time for a given Enhancement. *(If you have a large number of Companies to convert, please do in batches of 20 or fewer due to memory limitations.)*



Help: The Help button, located at the bottom right of the window, opens an HTML help file.

Get Adobe Acrobat: Opens the Adobe Acrobat website to the page where Acrobat can be downloaded and installed.

Uninstall Enhancement If this option is available, then selecting this button will start the un-install process, removing the enhancement from the system. (for more information see [Uninstall DSD Enhancements](#))

Section C: Setup

MAS90WEB

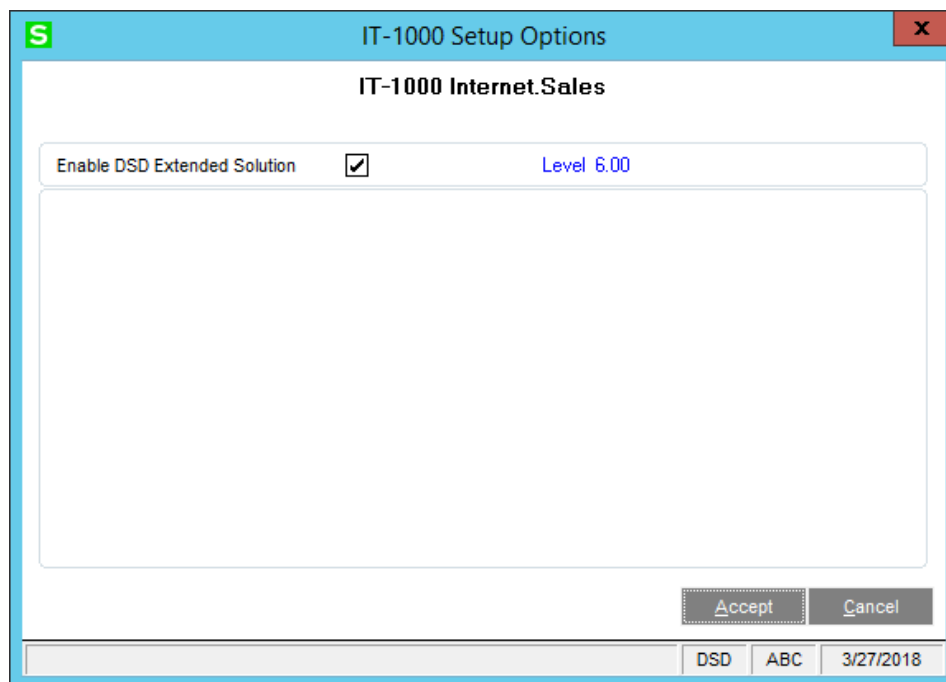
After installation, you will need to copy the following files from the MAS90\Links folder in the Sage 100 installation into the Webeng\Links folder on the web server:

AR_LevelConversion.pvc	IT_LevelConversion.pvc
AR_SalespersonListing_rpt.pvc	IT_ShoppingCartDetail_bus.pvc
AR_Salesperson_bus.pvc	IT_ShoppingCart_bus.pvc
AR_Salesperson_ui.pvc	IT_ShoppingCart_upd.pvc
IT_EBMUserIDListing_rpt.pvc	IT_UIDCustomerChange_bus.pvc
IT_EBMUserIDListing_ui.pvc	IT_WebMenu_bus.pvc
IT_EBusinessManagerUserID_bus.pvc	IT_WebMenu_ui.pvc
IT_EBusinessManagerUserID_ui.pvc	

Copy IW programs to IS Server: Copy the programs in the “IW” directory into the “IW” directory in the “wwwroot” directory of the Sage 100 **e-Business Manager server**. *This step is required to place the proper programs on the server. As some businesses have a server site that is remotely hosted, this step may require you to FTP the “IW” programs to the server.*

Setup

Upon completion of software installation, you will need to access Setup Options from the e-Business Manager Setup menu. Select this part number and the Setup screen for this Extended Solution will appear. Check the ‘Enable DSD Extended Solution’ box to activate this Extended Solution.



You must visit this Setup screen after each upgrade or reinstallation of this Extended Solution.

Role Maintenance

The following Task has been added to e-Business Manager, Setup Options:

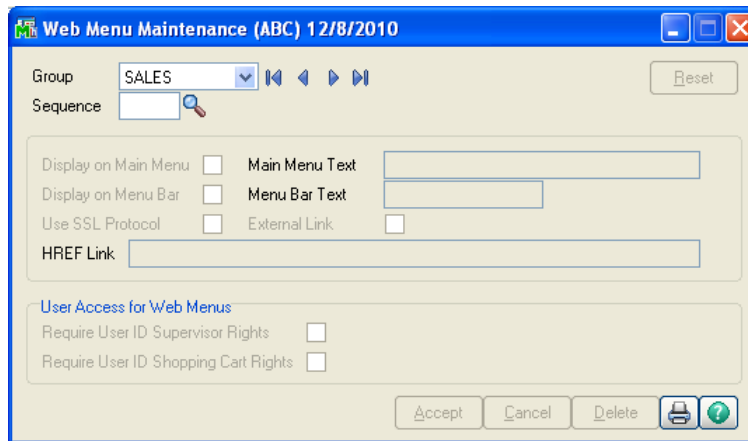
- ☐ Extended Solutions Setup

Please review your security setup in Role Maintenance and make appropriate changes.

Section D: System Operations

Web Menu Maintenance

A new Group called 'Sales' has been added. It is similar to the .order Group MAIN. You will need to configure this for what is appropriate for your salespeople.



Web Menu Maintenance (ABC) 12/8/2010

Group: SALES [Reset]

Sequence: [Search]

Display on Main Menu ☐ Main Menu Text: [Text Box]

Display on Menu Bar ☐ Menu Bar Text: [Text Box]

Use SSL Protocol ☐ External Link ☐

Href Link: [Text Box]

User Access for Web Menus

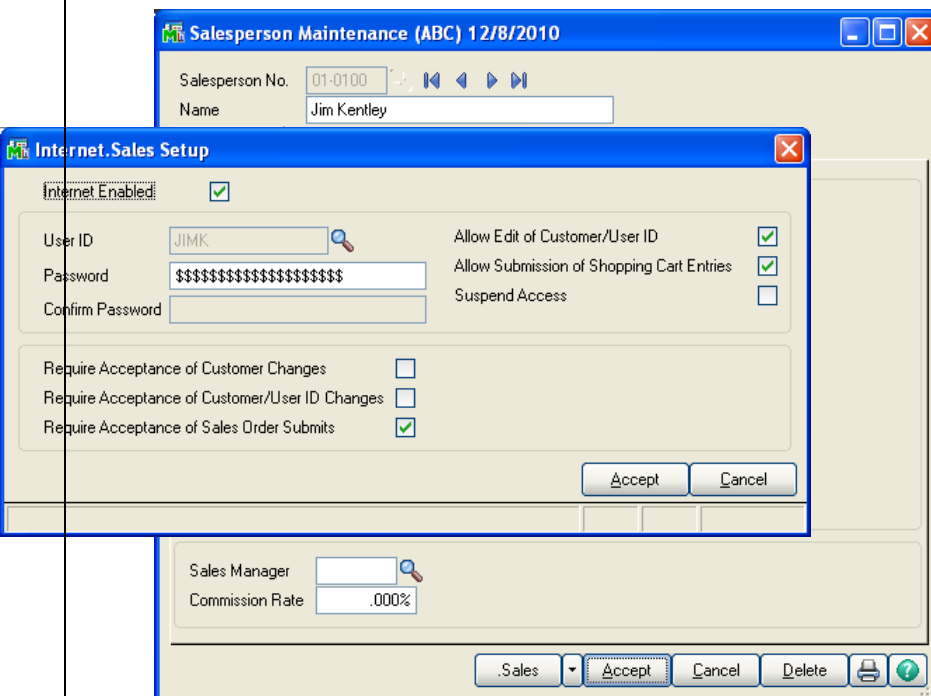
Require User ID Supervisor Rights ☐

Require User ID Shopping Cart Rights ☐

[Accept] [Cancel] [Delete] [Print] [Help]

A/R Salesperson Maintenance

Salesperson Maintenance has been modified with a 'Sales' button. Click this to access the Internet.Sales Setup screen.



Salesperson Maintenance (ABC) 12/8/2010

Salesperson No.: 01-0100 [Search]

Name: Jim Kentley

Internet.Sales Setup

Internet Enabled ☒

User ID: JIMK [Search]

Password: \$\$\$\$\$\$\$\$\$\$\$\$\$\$\$\$

Confirm Password: [Text Box]

Allow Edit of Customer/User ID ☒

Allow Submission of Shopping Cart Entries ☒

Suspend Access ☐

Require Acceptance of Customer Changes ☐

Require Acceptance of Customer/User ID Changes ☐

Require Acceptance of Sales Order Submits ☒

[Accept] [Cancel]

Sales Manager: [Search]

Commission Rate: .000%

[Sales] [Accept] [Cancel] [Delete] [Print] [Help]

Establish the User ID and password. The option to 'Allow Edit of Customer /User ID' is the same as 'Supervisor Rights' in EBM User ID Maintenance. 'Suspend Access' is the same as 'Suspend Access to Web' and 'Allow Submission of Shopping Cart Entries' is tied to the same named option in User ID Maintenance. The salesperson options to require acceptance of

changes and submits will override whatever has been established for the customer. Therefore if the

customer option to require sales order submits is checked, but not for the salesperson, then no acceptance will be required when this salesperson submits a shopping cart for this customer.

User ID Maintenance

Salesperson logins can also be maintained in EBM User ID Maintenance. The Type field has been modified with .sales in the drop box.

A selection range by Salesperson Number has been added to the User ID listing.

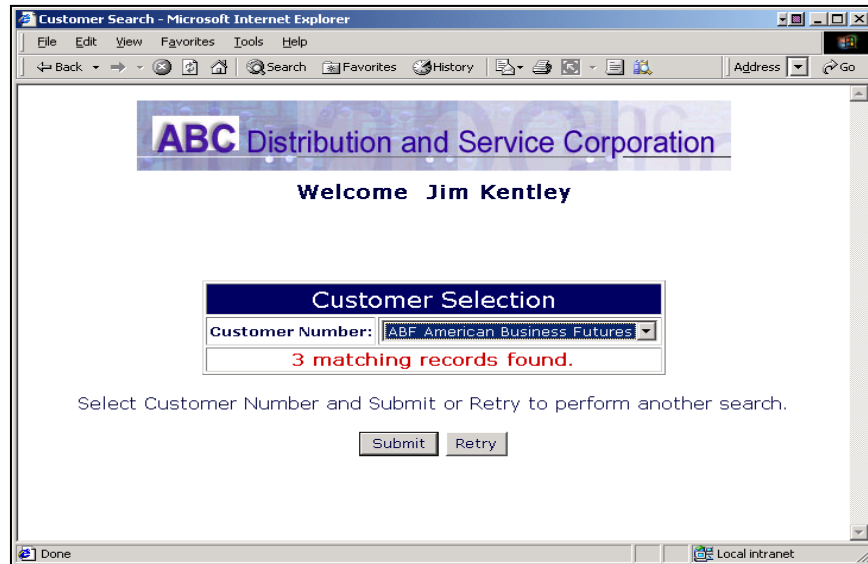
From the Internet

After you have logged on to e-Business Manager as a salesperson, you will be presented with the Customer Search form. Specify the Customer Number, Customer Name, Sort Field, Customer Type, Zip Code, or Phone Number.

The screenshot shows a web browser window titled "Customer Search - Microsoft Internet Explorer". The browser's address bar is empty, and the status bar at the bottom indicates "Done" and "Local intranet". The web page has a header with the logo "ABC Distribution and Service Corporation" and a welcome message "Welcome Jim Kentley". Below this is a section titled "Customer Search" containing a form with the following fields: "Customer Number:", "Customer Name:", "Sort Field:", "Customer Type:", "Zip Code:", and "Phone Number:". Each field has a corresponding text input box. A "Search" button is located below the form. At the bottom of the form area, there is a note: "Enter ONE of the search criteria to start the search."

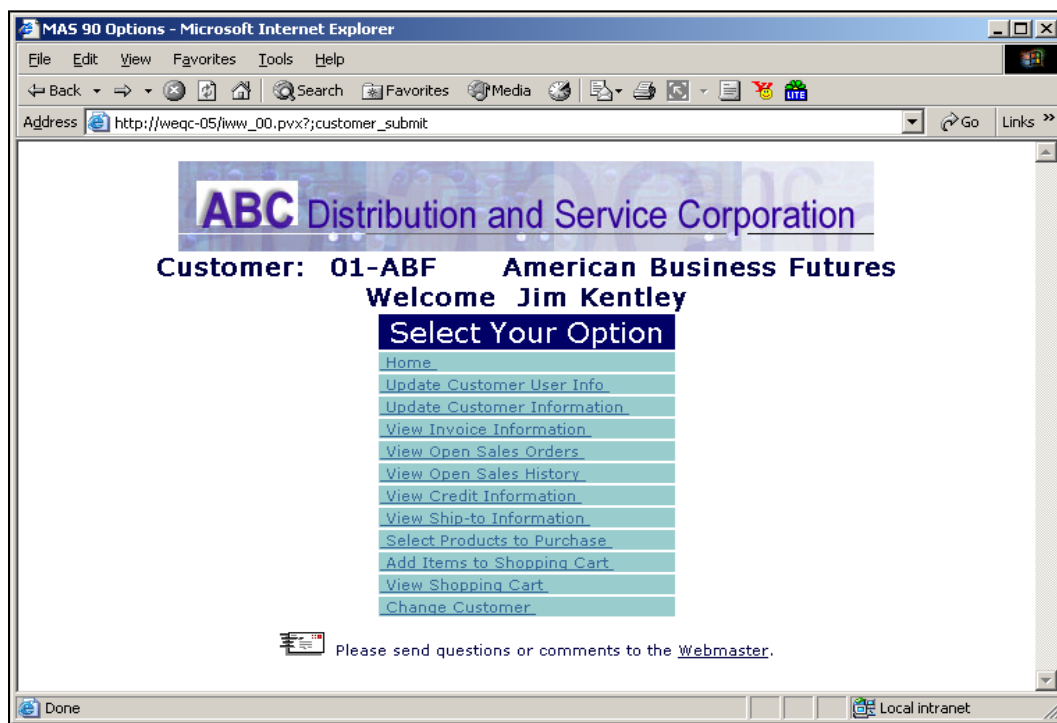
Enter search criteria in any of these fields (full or partial) and click the Search button. If multiple criteria are entered, then it uses the data in the first search field with non-blank value*.

** Only one Search on a field is performed at a time. Therefore, if you entered 'Accounting' in the customer name field and '(708)' in the phone number field, the results will **not** be all customers who match both data fields. It will be all customers who match 'Accounting' as the beginning characters of their customer name, or if it finds none, then all customers whose phone number begins (708).*



If only one match is found, it will select that Customer. If more than one match is found, you will need to select the appropriate value from the Customer Number drop box and click the Submit button or press the Retry button to enter in new search criteria.

Once a valid Customer Number is selected, you will proceed to the Main Options screen. The Customer Number and Name is displayed above the Options Menu. The Change Customer option has been added to the menu; use this to select a different Customer Number. On all of the internet HTML forms, the name of the current customer will be displayed.



Item Entry

From Select Products to Purchase, then drill into the item detail the customer wishes to purchase. This form has been modified to display the Customer Number & Name at the top of the form. It also contains a Drop Ship field, a Unit Cost field and a Discount field. Unit Cost should only be filled in if you selected Drop Ship. It will default to zero and can be overridden. If you fill in a value when Drop Ship is unchecked, it will not update to the Sales Order. Discount should be entered as a percent like Sales Order line entry.

Item: ARS-9201
Description: SPECIALTY GINGER JAR LAMP
Unit of Measure: EACH
Drop Ship: ☒
Unit Cost: 55.000
Discount: 5.000
Quantity Available: 161
Order Quantity: 1

From Quantity	To Quantity	Unit Price
1	3	94.95
4	9	90.95
10	Or Greater	88.95

Home User Customer Invoices Open Orders Shopping View Cart Change Customer
Please send questions or comments to the [Webmaster](#).

The View Shopping Cart and Confirm Shopping Cart forms will then display these additional fields under each item; Unit Cost will only display if Drop Ship is selected. Note the line extension reflects the application of the discount.

View Shopping Cart - Microsoft Internet Explorer

Address: http://wse3420292/TW_ShoppingCartOrder.mhp.pvx?SUBMIT_SO

ABC Distribution and Service Corporation

01-ABF American Business Futures

View Shopping Cart

Item Number	Item Description	Quantity	Unit Price	Extension
ARS-9201	SPECIALTY GINGER JAR LAMP Drop Ship: Y Unit Cost: 55.000 Discount: 5.000%	1	94.95	90.20
				Taxable: 0.00
				Non Taxable: 90.20
				Freight: 0.00
				Sales Tax: 0.00
				Order Total: 90.20

Click Next to save your changes.
Change quantity to zero to delete an item.

Enter item number and quantity to add an item.

Bill To: American Business Futures
2131 N. 14th Street
Suite 100
Accounting Department

Ship To: American Business Futures
American Business Futures
Racine Warehouse
Racine, WI 53120

Confirm Shopping Cart Submission

Item Number	Item Description	Quantity	Unit Price	Extension
ARS-9201	SPECIALTY GINGER JAR LAMP Drop Ship: Y Unit Cost: 55.000 Discount: 5.000%	1	94.95	90.20
				Taxable: 0.00
				Non Taxable: 90.20
				Freight: 10.00
				Sales Tax: 0.00
				Order Total: 100.20

Bill To: American Business Futures
2131 N. 14th Street
Suite 100
Accounting Department
Milwaukee, WI 53205-1204
United States of America

Ship To: American Business Futures
Racine Warehouse
5411 Kendrick Place
Racine, WI 53120
United States of America

Terms: 01 Net 30 Days

Payment Method: Cash

Ship Via: Cash On Delivery

Customer PO:

Desired Ship Date: 12/24/2007

Comments & Special Instructions:

Delete Edit Accept

Prices may be subject to change. For an immediate copy of this submission for your records, use your browser to print this page before you click the Accept button.

[Home](#) [User](#) [Customer](#) [Invoices](#) [Open Orders](#) [Order History](#) [RMA](#) [Credit Info](#) [Ship-to Info](#) [Shopping](#) [View Cart](#) [Change Customer](#)

Please send questions or comments to the [Webmaster](#).

Shopping Cart Submittal

If Drop Ship was checked on a line in the shopping cart, then the subsequent sales order line will be set to Drop Ship. The Unit

Cost will be set to the shopping cart's unit cost value.

If the Sales Order option to Allow Discount Rate by Line is checked, the Discount rate on the shopping cart line will transfer to the Discount Rate of the sales order line.

ODBC Dictionary

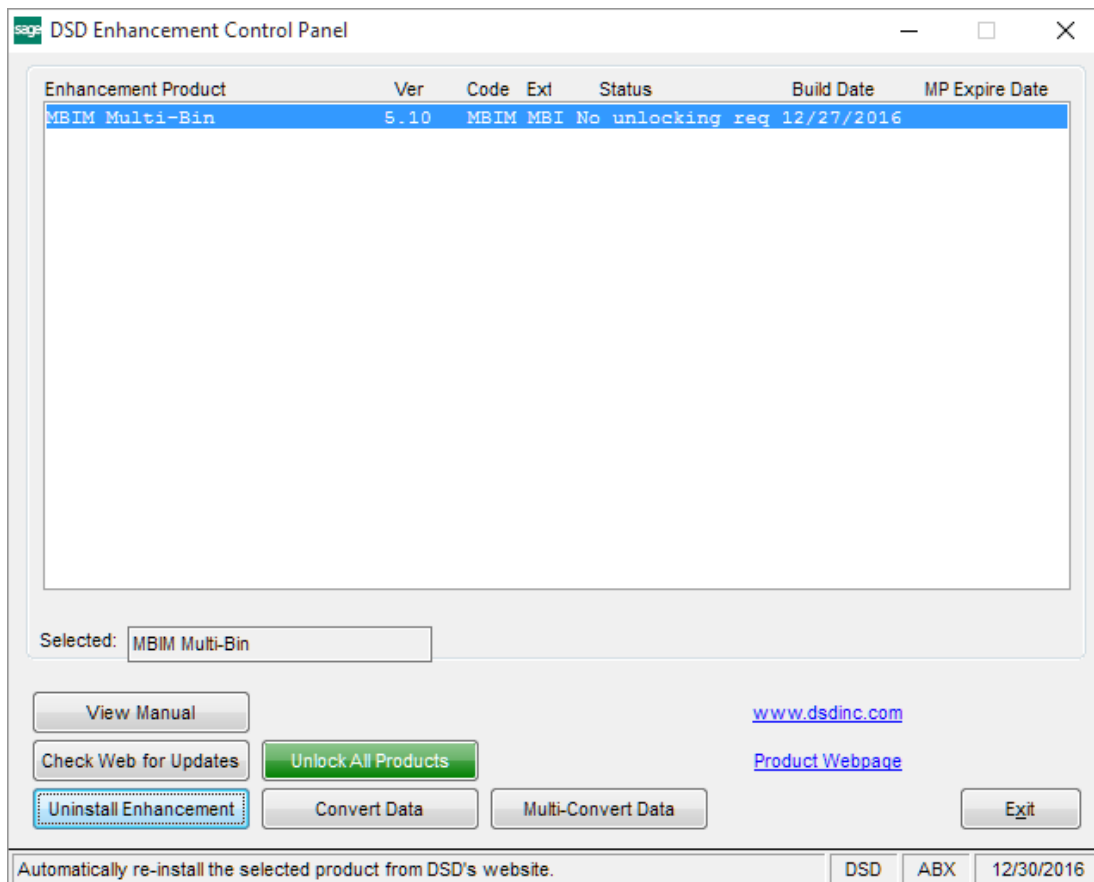
The files listed below have been added or changed in the ODBC Dictionaries by this Extended Solution for Crystal Reports purposes.

<i>File:</i>	<i>Field:</i>
AR_Salesperson:	EBMEnabled_001\$ RequireAcceptOfCustChange_001\$ RequireAcceptOfUIDChange_001\$ RequireAcceptOfSOSubmits_001\$
AR_SalespersonListingWrk:	EBMEnabled_001\$ RequireAcceptOfCustChange_001\$ RequireAcceptOfUIDChange_001\$ RequireAcceptOfSOSubmits_001\$ EBMUserID_001\$ SupervisorRights_001\$ AllowSubOfShoppingCart_001\$ SuspendAccess_001\$
SY_EBusinessManagerUserID:	SalespersonDivisionNo_001\$ SalespersonNo_001\$
IT_UserIDListingWrk:	SalespersonDivisionNo_001\$ SalespersonNo_001\$
IT_ShoppingCartItemsSelected:	DropShip_001\$ UnitCost_001 LineDiscountPercent_001
IT_ShoppingCartDetail:	DropShip_001\$ UnitCost_001 LineDiscountPercent_001
DropShip_001\$	IT_ShoppingCartAutoLogDtl: UnitCost_001 LineDiscountPercent_001

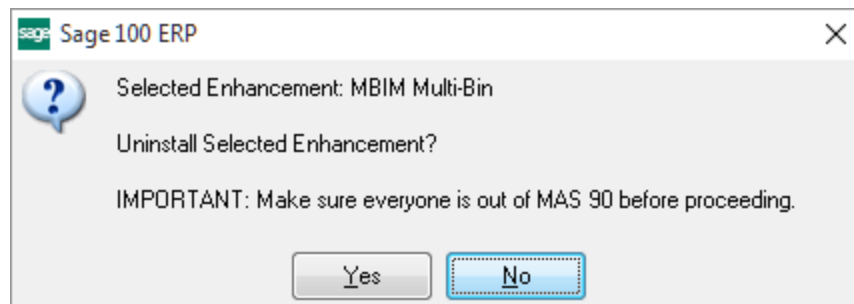
Be aware that the ODBC Dictionaries may contain other files and data fields that will be unavailable without their corresponding Extended Solutions installed.

Section E: Uninstall DSD Enhancements

A DSD Enhancements Uninstall Utility has been provided for the purposes of removing DSD Enhancements from your Sage 100 System. This utility may be accessed from the **DSD Enhancement Control Panel** menu option on the **Library Master / Utilities** menu.

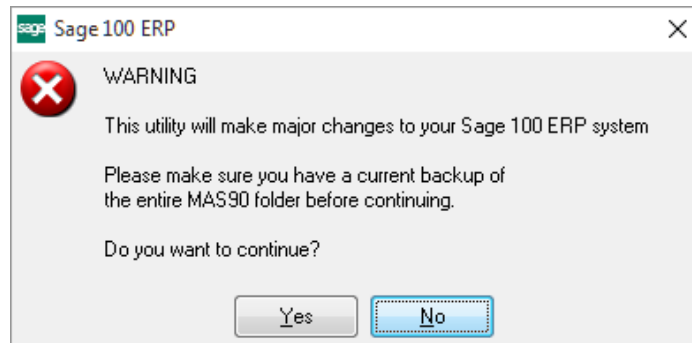


When accessing the **DSD Enhancement Control**, select the enhancement that you wish to Uninstall, and then select the **Uninstall Enhancement** button. The following message box will appear:



Select **No** to exit the Uninstall Process.
 Select **Yes** to continue with the Uninstall Process.

The following message box will appear, to remind you that a complete backup of your entire Sage 100 system should be completed prior to uninstalling a DSD product.



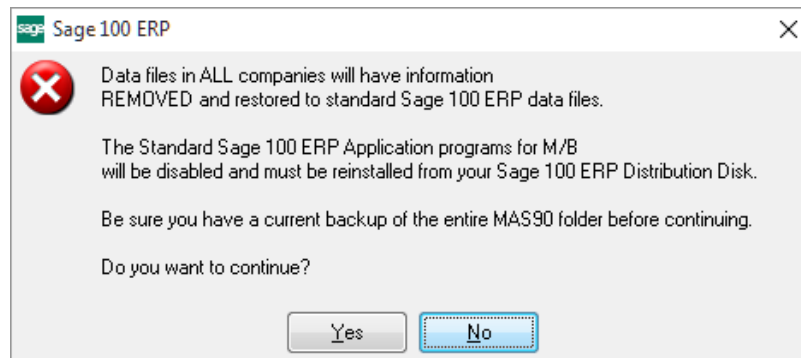
Select **No** to exit the Uninstall Process.
Select **Yes** to continue with the Uninstall Process.

After the Uninstall of the DSD Enhancement, you MUST reinstall certain standard Sage 100 modules, followed by reinstallation of Product Updates and Hot Fixes, if applicable.

A message box will appear, and will display which of those specific Sage 100 modules you must reinstall afterwards.

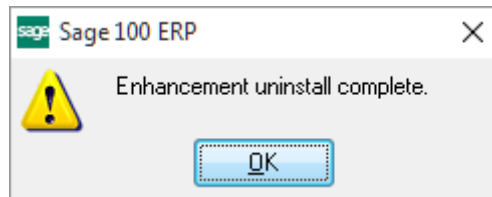
Select **No** to exit the Uninstall Process.
Select **Yes** to continue with the Uninstall Process.

The following message box will appear, displaying the final warning message.



Select **No** to exit the Uninstall Process.
Select **Yes** to continue with the Uninstall Process. At this point, the DSD Enhancement will be removed from the Sage 100 system.

After completion of the Uninstall, the following message box will appear. Select OK to continue.



Now that the Uninstall process is completed, you must:

- Reinstall the applicable standard Sage 100 modules
- Reinstall the latest Sage 100 Service Pack/Updates, if applicable.
- Reinstall any other DSD Enhancements or Developer products that are affected from the reinstallation of the standard Sage 100 module(s).