



# **DSD Business Systems**

**Sage 100 Enhancements**

**IMPC**

**Extended Price Codes**

**Version 6.00**



Information in this document is subject to change without notice.

Copyright 1993-2018, DSD Business Systems All rights reserved.

Extended Price Codes User's Manual  
Version 6.00

20 February, 2018

DSD Business Systems  
8787 Complex Drive  
Suite 400  
San Diego, CA 92123  
858/550-5900 8:00am to 5:00pm PST  
858/550-4900 Fax

### **Trademarks**

**ProvideX®** is a Trademark of Sage Software.

**Windows** is a trademark of Microsoft Corporation.

**Sage 100®** is a registered trademark of Sage Software.

**PXPlus®** is a registered trademark of PVX Plus technologies

All other product names and brand names are service marks, and/or trademarks or registered trademarks of their respective companies.

This documentation and the software described herein, is prepared and published under license. Sage Software has not tested or verified either the software or any representation in this documentation regarding the software. Sage Software does not make any warranty with respect to either this documentation or the software described herein, and specifically disclaims any warranty, express or implied, with respect hereto, including the warranties of fitness for a particular purpose and merchantability.



## Table of Contents

---

<b>SECTION A: INTRODUCTION</b>	<b>5</b>
WEB RESOURCES.....	5
SUPPORT .....	5
EXTENDED PRICE CODES FEATURES.....	6
REPORTS.....	6
<b>SECTION B: GETTING STARTED</b>	<b>7</b>
REQUIRED LEVELS.....	7
INSTALLATION.....	7
DSD ENHANCEMENT CONTROL PANEL.....	9
<b>SECTION C: SETUP</b>	<b>11</b>
I/M PRICE CODE MAINTENANCE.....	11
I/M PRICE CODE LISTING.....	11
<b>SECTION D: SYSTEM OPERATIONS</b>	<b>12</b>
ITEM PRICING MAINTENANCE WINDOW .....	12
I/M TRANSACTION DATA ENTRY, SALES ENTRY.....	13
S/O SALES ORDER AND INVOICE ENTRY.....	13
<b>SECTION E: UNINSTALL DSD ENHANCEMENTS</b>	<b>14</b>

## Section A: Introduction

---

This manual contains a description and instructions for this DSD product. Operating instructions are included for the features added by this product to Sage 100. For instructions on using Sage 100, refer to the appropriate Sage 100 manual, or call your Sage 100 reseller. DSD Business Systems offers excellent Sage 100 support, at an hourly rate.

### Web Resources

DSD web site: <http://www.dsdinc.com>

The Enhancement page contains:

- Current Release Schedule*
- Purchasing Information*
- Installation Instructions*
- Product Support*
- Enhancement Links*

IMPC Extended Price Codes:

<http://www.dsdinc.com/enhancement/extended-price-codes-3>

The product web page contains:

- Product Description*
- Web Links*
- Current Product Version Table*
- Product Installation File Download*
- Product Manual in .pdf Format*
- Revision History*
- FAQ*

### Support

DSD provides product support through Sage 100 resellers. Support is provided for the current version. Older versions are supported at an hourly rate. DSD's telephone number is **858-550-5900**. Fax: **858-550-4900**.

For a hard error, where the program displays an error dialog, report:

- Error number.*
- Program name.*
- Line number.*
- Program version.*
- Exact sequence that caused the error, including menus and menu selections.*

*Other pertinent information.*

If leaving a message or faxing, please include:

*Your name.*

*Your phone number (and fax if applicable) and extension.*

It is possible to be unable to duplicate a problem, because of data corruption or because we have not exactly duplicated a particular operating environment. In such circumstances, we can only continue to try to fix the problem if we can either access the system with Symantec PCAnywhere or by some other means access or duplicate the system.

### Extended Price Codes Features

The IMPC enhancements allow the user to define 20 quantity breaks from each price code level, instead of the existing 5 breaks. This feature has been added to the Price Code Maintenance Setup program in Inventory Management, to the Item Pricing Info screen (and Inquiry) in Item Maintenance, and to the Price Lookup Inquiry available in Sales Order and Invoice Line Entry.

The screenshot shows the 'Item Pricing Maintenance' window. At the top, the 'Item Code' is '1001-HON-H252' and the description is 'HON 2 DRAWER LETTER FLE W/D LK'. The 'Pricing Option' is set to 'Item Pricing' and the 'Price Level' is '1'. The 'Pricing Method' is 'Price Discount Amount'. The 'Standard Price' is '84.000' and the 'Standard Cost' is '32.750'. Below this is a table with 20 rows, each representing a quantity break. The columns are 'Step', 'From Quantity', 'To Quantity', 'Discount Amount', and 'Unit Price'.

Step	From Quantity	To Quantity	Discount Amount	Unit Price
1	1	2	1.000	83.000
2	3	4	2.000	82.000
3	5	6	3.000	81.000
4	7	8	4.000	80.000
5	9	10	5.000	79.000
6	11	12	6.000	78.000
7	13	14	7.000	77.000
8	15	16	8.000	76.000
9	17	18	9.000	75.000
10	19	20	10.000	74.000
11	21	22	11.000	73.000
12	23	24	12.000	72.000
13	25	26	13.000	71.000
14	27	28	14.000	70.000
15	29	30	15.000	69.000
16	31	32	16.000	68.000
17	33	34	17.000	67.000
18	35	36	18.000	66.000
19	37	38	19.000	65.000
20	39	99,999,999	20.000	64.000

At the bottom of the window are buttons for 'Accept', 'Cancel', 'Delete', and a help icon.

### Reports

The Item Listing and the Price Code Listing (accessed from the Price Code Maintenance screen) have been modified to show the extended price levels.

## Section B: Getting Started



- **If you reinstall or upgrade one of the Sage 100 modules listed in the following table, you must also reinstall this Enhancement.**
- Enhancements from different Sage Developers are generally not designed to work together. If installed together, problems are likely to occur.
- **Check with DSD before installing more than one Enhancement.**

### Required Levels

Sage 100 Module	Module Required	Required Level
I/M	Y	6.00
S/O	Y	6.00
A/R	Y	6.00

### Installation

1. **Back-up:** Exit all Sage 100 sessions. Back-up existing Sage 100 data.
2. **Check Levels:** Sage 100 module levels **must match** those listed above.
3. **Run Enhancement Setup Program:** Save the executable installation program (sent to you or downloaded from our website) in a convenient location on the Sage 100 server. Launch the program from Windows Explorer or by selecting Start/Run, and then browse for the file in the location you saved it. Follow on-screen instructions.
4. **Send your Sage Serial Number to your DSD Representative:** Send your Sage Serial Number to your DSD representative in order for us to send you back the encrypted keys to unlock your system. This serial number can be found in Library Master\Setup\System Configuration, Tab 3. Registration as Serial Number.
5. **Re-Start Sage 100:** Sage 100 will be updated.
6. **Unlock the Enhancement:** DSD Enhancements must be unlocked to run. When any part of the Enhancement is run for the first time, the **DSD Enhancement License Agreement and Activation** window will appear. Follow the steps shown on that window. *You can click the Help button for more detailed instructions.*

**Note:** On the next page is a screenshot of the DSD Enhancement License Agreement and Activation window.

After accepting the License Agreement, you can then select the type of unlocking that you'd prefer. The choices are File, Web, Demo and Manual Entry.

**File Unlock:** After receiving your encrypted serial number key file from DSD, and placing that file in the MAS90/SOA directory, selecting this option will unlock all products keys contained in the file. This means you can unlock all enhancements at once using this option.

**Web Unlock:** If the system that is running the DSD Enhancement *has web access* and you *have sent DSD your Sage Serial number*, you can unlock the Enhancement without assistance using Web

Unlock. When this option is selected, the program will attempt to download encrypted serial number key file from DSD and then proceed to unlock all enhancements contained in the file.

- The Sage 100 system that is being used must have web access for this option to be effective.
- You can send your Sage Serial Number to your DSD Enhancements sales representative.

**Demo Unlock:** If a Demo mode is available for the Enhancement you're running, you will be able to Demo unlock the product without assistance from DSD for demo purposes.

- Creating a Demo Unlock is a good way to temporarily unlock DSD Enhancements off-hours, if you do not have web or email access. Later, you can unlock the product fully, during business hours.

**Manual Entry Unlock:** If you want to unlock a single enhancement using a single encrypted key, you can select this option and enter the 64 character key you receive from DSD by copy and paste.

**Note:** You can also unlock a DSD Enhancement through the **DSD Enhancement Control Panel** found on the Library Master Utilities Menu. Then, select the Enhancement with your mouse from the list of Enhancements and click the **Unlock Product** button on the right side of the window.

7. **Convert Data:** After unlocking, the DSD Conversion Wizard will appear. Follow on-screen instructions to complete data conversion. You can exit the conversion program without converting data. The Enhancement will not proceed, however, until data is converted. If you enter an enhanced program and data has not been converted, the conversion program will run again.



### DSD Enhancement Control Panel

Starting with version 3.61, all DSD Enhancement products include DSD's Enhancement Control Panel. The **DSD Enhancement Control Panel is accessed from the Library Master Utilities menu.**

The DSD Enhancement Control Panel is a simple to use yet powerful system to help maintain DSD Enhancements installed on a Sage 100 system. To use it, select an Enhancement product from the list on the window and then click the button, on the right side of the window, which corresponds with the desired task.

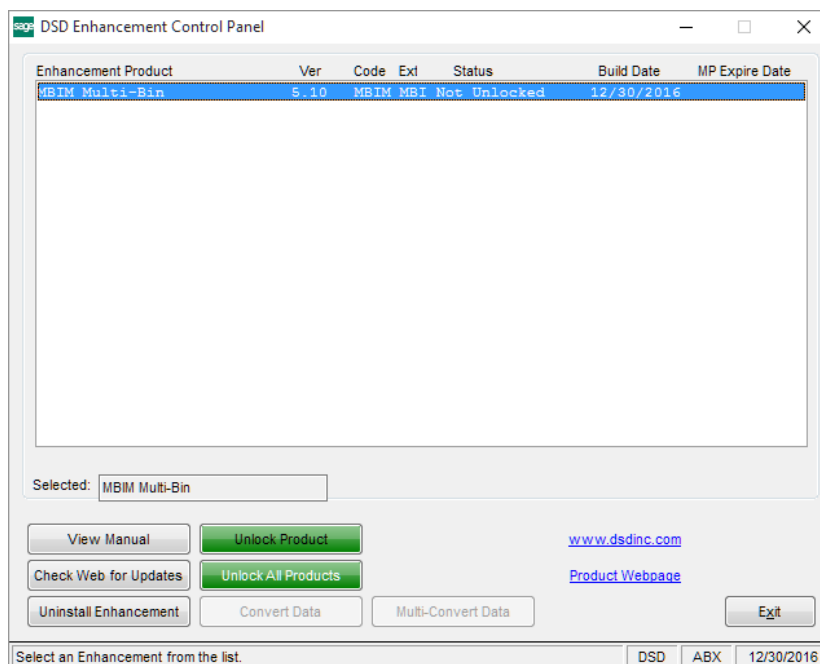
**View Manual:** This button will display the product manual for the selected Enhancement using Adobe Acrobat. For this to be possible, the PDF file for the corresponding manual must be in the "MAS90/PDF" folder in the Sage 100 system. If the file is not present, and the system has web access, the correct PDF file will be automatically downloaded from the DSD website, put into the "MAS90/PDF" folder and then displayed.

**Check the Web for Updates:** This button will check the DSD website to see what the current build is the selected Enhancement and alert the user if a later version is available. *This requires an internet connection on the Sage 100 system.*

**Unlock Product:** This will cause the DSD Enhancement License Agreement and Activation window to appear. Using this window is described on the previous page. *This button is disabled if the selected Enhancement is already unlocked or if unlocking is not required.*

**Unlock All Products:** This will cause the DSD Enhancement All License Agreement and Activation window to appear. This window is similar to the one described on the previous page, but has only web and file as options to unlock. *This button is never disabled.*

**Convert Data:** After verification, the selected Enhancement's data conversion program will run. Data conversion is non-destructive, and may be triggered any number of times. Sometimes this is required to fix data records imported or updated from a non-enhancement installation.



**Multi-Convert Data:** Multiple Companies can be converted at the same time for a given Enhancement. *(If you have a large number of Companies to convert, please do in batches of 20 or fewer due to memory limitations.)*



**Help:** The Help button, located at the bottom right of the window, opens an HTML help file.

**Get Adobe Acrobat:** Opens the Adobe Acrobat website to the page where Acrobat can be downloaded and installed.

**Uninstall Enhancement** If this option is available, then selecting this button will start the un-install process, removing the enhancement from the system. (for more information see [Uninstall DSD Enhancements](#))

## Section C: Setup

### I/M Price Code Maintenance

Price Code Maintenance (found on the I/M Setup menu) has been modified to allow the user to define prices for twenty quantity breaks, instead of five.

Step	From Quantity	To Quantity	Discount Amount
1	1	2	1.000
2	3	4	2.000
3	5	6	3.000
4	7	8	4.000
5	9	10	5.000
6	11	12	6.000
7	13	14	7.000
8	15	16	8.000
9	17	18	9.000
10	19	20	10.000
11	21	22	11.000
12	23	24	12.000
13	25	26	13.000
14	27	28	14.000
15	29	30	15.000
16	31	32	16.000
17	33	34	17.000
18	35	36	18.000
19	37	38	19.000
20	39	99,999,999	20.000

### I/M Price Code Listing

Price Code Listing has been modified to show extended price codes in addition to the standard five price codes. This report is accessed from the Price Code Maintenance screen through the printer button located on the bottom right of the screen shown above (the I/M Price Code Maintenance screen).

Price Code Listing						
ABC Distribution and Service Corp. (ABC)						
Price Code	Description	Price Level	Pricing Method	From Quantity	To Quantity	Amount/Percent Change
BRKS	20 Breaks	Standard	Price Discount Amount	1	2	1.000
				3	4	2.000
				5	6	3.000
				7	8	4.000
				9	10	5.000
				11	12	6.000
				13	14	7.000
				15	16	8.000
				17	18	9.000
				19	20	10.000
				21	22	11.000
				23	24	12.000
				25	26	13.000
				27	28	14.000
				29	30	15.000
				31	32	16.000
				33	34	17.000
				35	36	18.000
				37	38	19.000
				39	And Over	20.000

## Section D: System Operations

### Item Pricing Maintenance Window

The **Item Pricing Maintenance** window is accessed by choosing **Pricing** from the **More...** button located on the upper right side of the Inventory Maintenance/Inquiry window.

This window has been modified for twenty price level breaks, as shown on the right. It otherwise works as standard.

Step	From Quantity	To Quantity	Discount Amount	Unit Price
1	1	2	1.000	83.000
2	3	4	2.000	82.000
3	5	6	3.000	81.000
4	7	8	4.000	80.000
5	9	10	5.000	79.000
6	11	12	6.000	78.000
7	13	14	7.000	77.000
8	15	16	8.000	76.000
9	17	18	9.000	75.000
10	19	20	10.000	74.000
11	21	22	11.000	73.000
12	23	24	12.000	72.000
13	25	26	13.000	71.000
14	27	28	14.000	70.000
15	29	30	15.000	69.000
16	31	32	16.000	68.000

The **Item Price Lookup** window is also accessed from the **More...** button in Inventory Maintenance/Inquiry. It has been modified to allow for twenty price levels, and operates as standard except for the additional fifteen price break levels.

The enhanced program will perform a look-up based on the enhanced twenty quantity price breaks when the Quantity is entered for a line item.

When the Price Lookup Inquiry is accessed, the new screen displays all twenty price breaks, and the user can perform "what-if" analyses using all twenty quantity breaks.

Step	From Quantity	To Quantity	Discount Amount	Unit Price
1	1	2	1.000	83.000
2	3	4	2.000	82.000
3	5	6	3.000	81.000
4	7	8	4.000	80.000
5	9	10	5.000	79.000
6	11	12	6.000	78.000
7	13	14	7.000	77.000
8	15	16	8.000	76.000
9	17	18	9.000	75.000
10	19	20	10.000	74.000
11	21	22	11.000	73.000
12	23	24	12.000	72.000
13	25	26	13.000	71.000
14	27	28	14.000	70.000
15	29	30	15.000	69.000
16	31	32	16.000	68.000

	Quantity	U/M	Unit Price	Extension
Order	.00	EACH	.000	.00

**I/M Transaction Data Entry, Sales Entry**

When a Sales Entry is made through I/M Transaction Data Entry, the enhanced program will perform a look-up based on the enhanced twenty price breaks when the Quantity is entered for a line item.

**S/O Sales Order and Invoice Entry**

The **Item Price Lookup** window has been modified to allow for twenty price levels. This window is accessed in the same way as standard Sage 100 and operates as standard except for the additional fifteen price break levels.

The enhanced program will perform a look-up based on the enhanced twenty quantity price breaks when the Quantity is entered for a line item.

When the Price Lookup Inquiry is accessed, the new screen displays all twenty price breaks, and the user can perform "what-if" analyses using all twenty quantity breaks.

**Price Lookup**

Item Code: 1001-HON-H252 HON 2 DRAWER LETTER FLE W/D LK

Customer No.: 01-ABF American Business Futures

Price Level: Custom Pricing for Price Level 1

Pricing Method: Price Discount Amount

Standard Price: 84.000

Standard Cost: 32.750

Sale Starting Date: 5/15/2010

Sale Ending Date: 5/31/2010

Sale Price: 79.800

Step	From Quantity	To Quantity	Discount Amount	Unit Price
1	1	2	1.000	83.000
2	3	4	2.000	82.000
3	5	6	3.000	81.000
4	7	8	4.000	80.000
5	9	10	5.000	79.000
6	11	12	6.000	78.000
7	13	14	7.000	77.000
8	15	16	8.000	76.000
9	17	18	9.000	75.000
10	19	20	10.000	74.000
11	21	22	11.000	73.000

**Price Lookup**

Item Code: 1001-HON-H252 HON 2 DRAWER LETTER FLE W/D LK

Customer No.: 01-ABF American Business Futures

Price Level: 1 Custom Pricing for Price Level 1

Pricing Method: Price Discount Amount

Standard Price: 84.000

Standard Cost: 32.750

Sale Starting Date: 5/15/2010

Sale Ending Date: 5/31/2010

Sale Price: 79.800

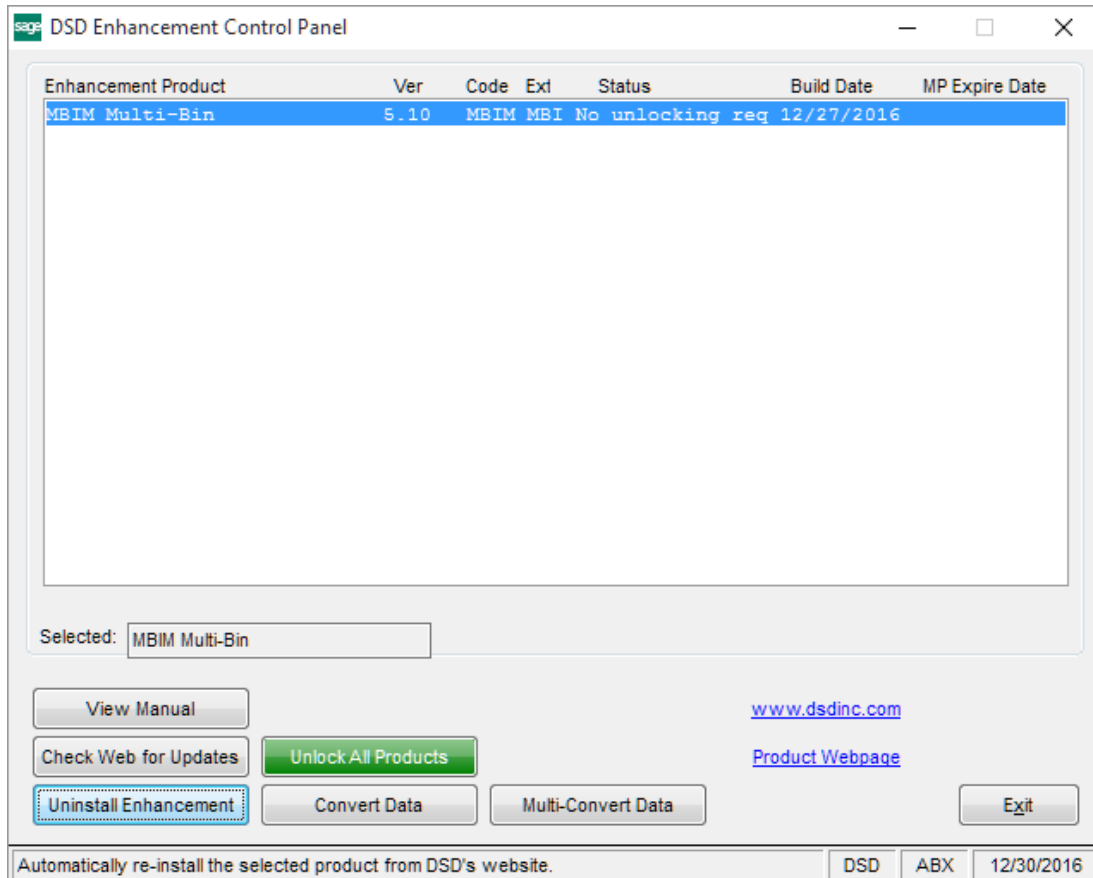
Step	From Quantity	To Quantity	Discount Amount	Unit Price
6	11	12	6.000	78.000
7	13	14	7.000	77.000
8	15	16	8.000	76.000
9	17	18	9.000	75.000
10	19	20	10.000	74.000
11	21	22	11.000	73.000
12	23	24	12.000	72.000
13	25	26	13.000	71.000
14	27	28	14.000	70.000
15	29	30	15.000	69.000
16	31	32	16.000	68.000
17	33	34	17.000	67.000
18	35	36	18.000	66.000
19	37	38	19.000	65.000
20	39	99,999,999	20.000	64.000

	Quantity	U/M	Unit Price	Extension
Order	30.00	EACH	69.000	2,070.00

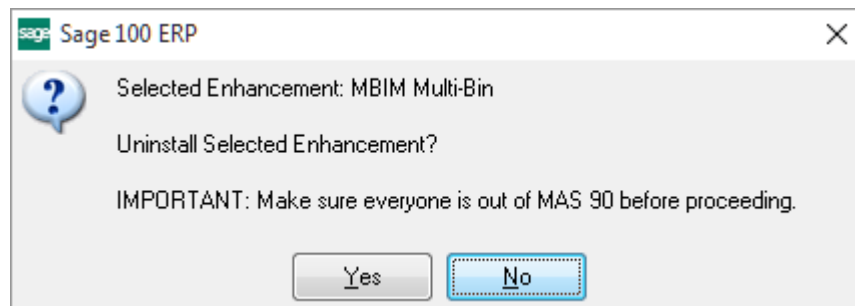
OK Cancel ?

## Section E: Uninstall DSD Enhancements

A DSD Enhancements Uninstall Utility has been provided for the purposes of removing DSD Enhancements from your Sage 100 System. This utility may be accessed from the **DSD Enhancement Control Panel** menu option on the **Library Master / Utilities** menu.

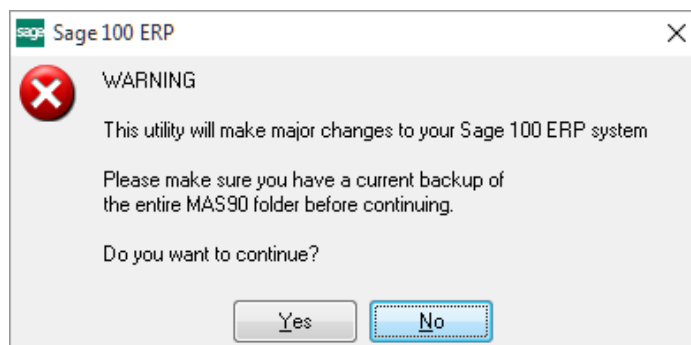


When accessing the **DSD Enhancement Control**, select the enhancement that you wish to Uninstall, and then select the **Uninstall Enhancement** button. The following message box will appear:



Select **No** to exit the Uninstall Process.  
 Select **Yes** to continue with the Uninstall Process.

The following message box will appear, to remind you that a complete backup of your entire Sage 100 system should be completed prior to uninstalling a DSD product.



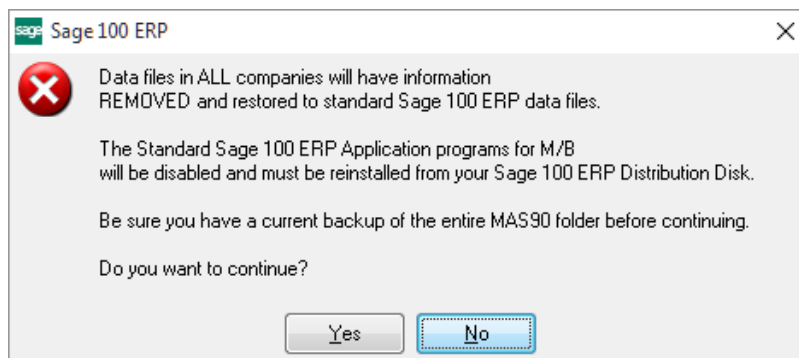
Select **No** to exit the Uninstall Process.  
Select **Yes** to continue with the Uninstall Process.

**After the Uninstall of the DSD Enhancement, you MUST reinstall certain standard Sage 100 modules, followed by reinstallation of Product Updates and Hot Fixes, if applicable.**

A message box will appear, and will display which of those specific Sage 100 modules you must reinstall afterwards.

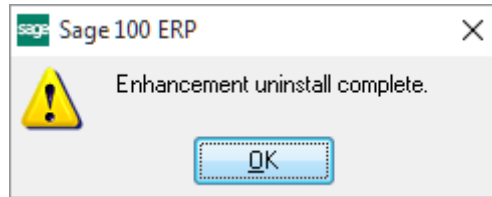
Select **No** to exit the Uninstall Process.  
Select **Yes** to continue with the Uninstall Process.

The following message box will appear, displaying the final warning message.



Select **No** to exit the Uninstall Process.  
Select **Yes** to continue with the Uninstall Process. At this point, the DSD Enhancement will be removed from the Sage 100 system.

After completion of the Uninstall, the following message box will appear. Select OK to continue.



Now that the Uninstall process is completed, you must:

- Reinstall the applicable standard Sage 100 modules
- Reinstall the latest Sage 100 Service Pack/Updates, if applicable.
- Reinstall any other DSD Enhancements or Developer products that are affected from the reinstallation of the standard Sage 100 module(s).