

DSD Business Systems

Sage 100 Enhancements

I239

Royalty Calculation and Maintenance

IM-1239

Version 6.20



Information in this document is subject to change without notice.

Copyright 1993-2020, DSD Business Systems All rights reserved.

Royalty Calculation and Maintenance User's Manual
Version 6.20

7 December, 2020

DSD Business Systems
8787 Complex Drive
Suite 400
San Diego, CA 92123
858/550-5900 8:00am to 5:00pm PST
858/550-4900 Fax

Trademarks

ProvideX® is a Trademark of Sage Software.

Windows is a trademark of Microsoft Corporation.

Sage 100® is a registered trademark of Sage Software.

PXPlus® is a registered trademark of PVX Plus technologies

All other product names and brand names are service marks, and/or trademarks or registered trademarks of their respective companies.

This documentation and the software described herein, is prepared and published under license. Sage Software has not tested or verified either the software or any representation in this documentation regarding the software. Sage Software does not make any warranty with respect to either this documentation or the software described herein, and specifically disclaims any warranty, express or implied, with respect hereto, including the warranties of fitness for a particular purpose and merchantability.

Table of Contents

SECTION A: INTRODUCTION	5
WEB RESOURCES	5
SUPPORT	5
ROYALTY CALCULATION AND MAINTENANCE FEATURES	6
SECTION B: GETTING STARTED	7
REQUIRED LEVELS	7
INSTALLATION	7
DSD ENHANCEMENT CONTROL PANEL	9
SECTION C: SETUP	11
SECTION D: SYSTEM OPERATIONS	12
ITEM ROYALTY MAINTENANCE	12
ITEM VENDORS MAINTENANCE	13
SALES ORDER SALES JOURNAL UPDATE	14
A/P ROYALTY EDIT MAINTENANCE	15
AP PERIOD END – ROYALTY PURGING.....	16
SECTION E: UNINSTALL DSD ENHANCEMENTS	18

Section A: Introduction

This manual contains a description and instructions for this DSD product. Operating instructions are included for the features added by this product to Sage 100. For instructions on using Sage 100, refer to the appropriate Sage 100 manual, or call your Sage 100 reseller. DSD Business Systems offers excellent Sage 100 support, at an hourly rate.

Web Resources

DSD web site: <http://www.dsdinc.com>

The Enhancement page contains:

- Current Release Schedule*
- Purchasing Information*
- Installation Instructions*
- Product Support*
- Enhancement Links*

I239 Royalty Calculation and Maintenance:

<http://www.dsdinc.com/enh/pages/I239.htm>

The product web page contains:

- Product Description*
- Web Links*
- Current Product Version Table*
- Product Installation File Download*
- Product Manual in .pdf Format*
- Revision History*
- FAQ*

Support

DSD provides product support through Sage 100 resellers. Support is provided for the current version. Older versions are supported at an hourly rate. DSD's telephone number is **858-550-5900**. Fax: **858-550-4900**.

For a hard error, where the program displays an error dialog, report:

- Error number.*
- Program name.*
- Line number.*
- Program version.*

*Exact sequence that caused the error, including menus and menu selections.
Other pertinent information.*

If leaving a message or faxing, please include:

Your name.

Your phone number (and fax if applicable) and extension.

It is possible to be unable to duplicate a problem, because of data corruption or because we have not exactly duplicated a particular operating environment. In such circumstances, we can only continue to try to fix the problem if we can either access the system with Symantec PCAnywhere or by some other means access or duplicate the system.

Royalty Calculation and Maintenance Features

This Extended Solution to the Inventory Management and Accounts Payable modules creates a system of marking Inventory Items as eligible to receive Royalties, defining by Item what its Royalty Percentage is as well as the Vendor who will receive the payments, then writing royalty records to a new file as part of Sales Order Sales Journal update. Records in this file can be edited via a new menu option.

Section B: Getting Started

CAUTION

- **If you reinstall or upgrade one of the Sage 100 modules listed in the following table, you must also reinstall this Enhancement.**
- Enhancements from different Sage Developers are generally not designed to work together. If installed together, problems are likely to occur.
- **Check with DSD before installing more than one Enhancement.**

Required Levels

Sage 100 Module	Module Required	Required Level
A/P	Y	6.20
I/M	Y	6.20

Installation

1. **Back-up:** Exit all Sage 100 sessions. Back-up existing Sage 100 data.
2. **Check Levels:** Sage 100 module levels **must match** those listed above.
3. **Run Enhancement Setup Program:** Save the executable installation program (sent to you or downloaded from our website) in a convenient location on the Sage 100 server. Launch the program from Windows Explorer or by selecting Start/Run, and then browse for the file in the location you saved it. Follow on-screen instructions.
4. **Send your Sage Serial Number to your DSD Representative:** Send your Sage Serial Number to your DSD representative in order for us to send you back the encrypted keys to unlock your system. This serial number can be found in Library Master\Setup\System Configuration, Tab 3. Registration as Serial Number.
5. **Re-Start Sage 100:** Sage 100 will be updated.
6. **Unlock the Enhancement:** DSD Enhancements must be unlocked to run. When any part of the Enhancement is run for the first time, the **DSD Enhancement License Agreement and Activation** window will appear. Follow the steps shown on that window. *You can click the Help button for more detailed instructions.*

Note: On the next page is a screenshot of the DSD Enhancement License Agreement and Activation window.

After accepting the License Agreement, you can then select the type of unlocking that you'd prefer. The choices are File, Web, Demo and Manual Entry.

File Unlock: After receiving your encrypted serial number key file from DSD, and placing that file in the MAS90/SOA directory, selecting this option will unlock all products keys contained in the file. This means you can unlock all enhancements at once using this option.

Web Unlock: If the system that is running the DSD Enhancement *has web access* and you *have sent DSD your Sage Serial number*, you can unlock the Enhancement without assistance using Web Unlock. When this option is selected, the program will attempt to download encrypted serial number key file from DSD *and then proceed to unlock all enhancements contained in the file*.

- *The Sage 100 system that is being used must have web access for this option to be effective.*
- *You can send your Sage Serial Number to your DSD Enhancements sales representative.*

Demo Unlock: If a Demo mode is available for the Enhancement you're running, you will be able to Demo unlock the product without assistance from DSD for demo purposes.

- *Creating a Demo Unlock is a good way to temporarily unlock DSD Enhancements off-hours, if you do not have web or email access. Later, you can unlock the product fully, during business hours.*

Manual Entry Unlock: If you want to unlock a single enhancement using a single encrypted key, you can select this option and enter the 64 character key you receive from DSD by copy and paste.

Note: You can also unlock a DSD Enhancement through the **DSD Enhancement Control Panel** found on the **Library Master Utilities Menu**. Then, select the Enhancement with your mouse from the list of Enhancements and click the **Unlock Product** button on the right side of the window.

- Convert Data:** After unlocking, the DSD Conversion Wizard will appear. Follow on-screen instructions to complete data conversion. *You can exit the conversion program without converting data. The Enhancement will not proceed, however, until data is converted. If you enter an enhanced program and data has not been converted, the conversion program will run again.*

DSD Enhancement Control Panel

Starting with version 3.61, all DSD Enhancement products include DSD's Enhancement Control Panel. The **DSD Enhancement Control Panel is accessed from the Library Master Utilities menu.**

The DSD Enhancement Control Panel is a simple to use yet powerful system to help maintain DSD Enhancements installed on a Sage 100 system. To use it, select an Enhancement product from the list on the window and then click the button, on the right side of the window, which corresponds with the desired task.

View Manual: This button will display the product manual for the selected Enhancement using Adobe Acrobat. For this to be possible, the PDF file for the corresponding manual must be in the "MAS90/PDF" folder in the Sage 100 system. If the file is not

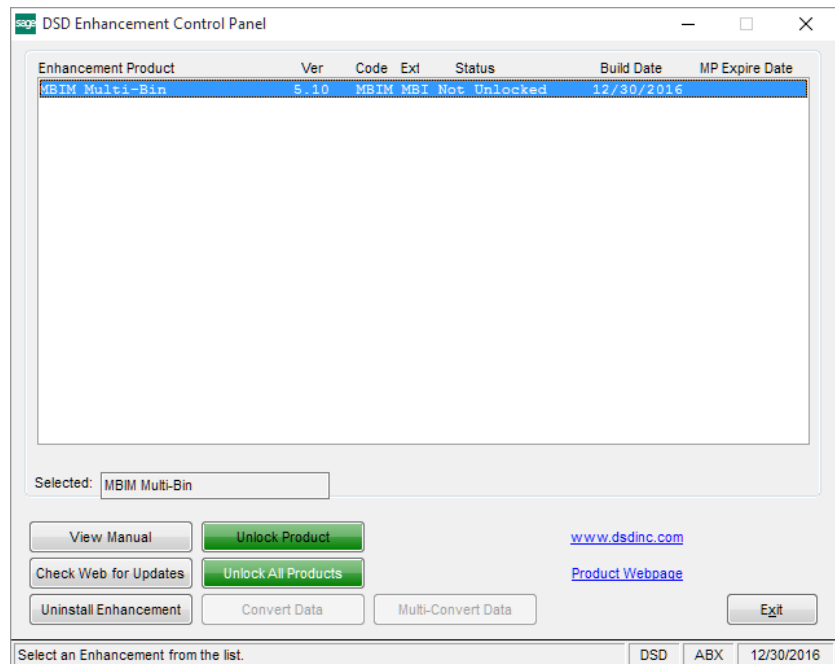
present, and the system has web access, the correct PDF file will be automatically downloaded from the DSD website, put into the "MAS90/PDF" folder and then displayed.

Check the Web for Updates: This button will check the DSD website to see what the current build is the selected Enhancement and alert the user if a later version is available. *This requires an internet connection on the Sage 100 system.*

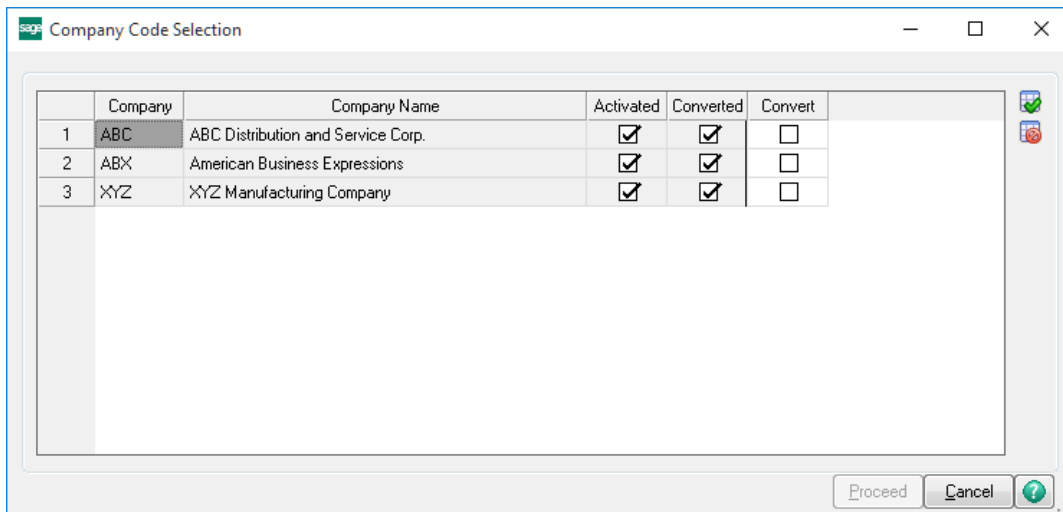
Unlock Product: This will cause the DSD Enhancement License Agreement and Activation window to appear. Using this window is described on the previous page. *This button is disabled if the selected Enhancement is already unlocked or if unlocking is not required.*

Unlock All Products: This will cause the DSD Enhancement All License Agreement and Activation window to appear. This window is similar to the one described on the previous page, but has only web and file as options to unlock. *This button is never disabled.*

Convert Data: After verification, the selected Enhancement's data conversion program will run. Data conversion is non-destructive, and may be triggered any number of times. Sometimes this is required to fix data records imported or updated from a non-enhancement installation.



Multi-Convert Data: Multiple Companies can be converted at the same time for a given Enhancement. (If you have a large number of Companies to convert, please do in batches of 20 or fewer due to memory limitations.)



Help: The Help button, located at the bottom right of the window, opens an HTML help file.

Get Adobe Acrobat: Opens the Adobe Acrobat website to the page where Acrobat can be downloaded and installed.

Uninstall Enhancement If this option is available, then selecting this button will start the un-install process, removing the enhancement from the system. (for more information see [Uninstall DSD Enhancements](#))

Section C: Setup

Upon completion of software installation, you will need to access the DSD Extended Solutions Setup from the Inventory Management Setup menu. Select this part number and the Setup screen for this Extended Solution will appear. Check the 'Enable DSD Extended Solution' box to activate this Extended Solution.

The screenshot shows a software dialog box titled "IM-1239 Setup Options" with a close button (X) in the top right corner. The main heading inside is "IM-1239 Royalty Calc & Maint". Below this, there is a section with a checkbox labeled "Enable DSD Extended" which is checked, and a text field labeled "Level 6.20". At the bottom right of the dialog are two buttons: "Accept" and "Cancel". A status bar at the very bottom of the window displays "DSD", "ABC", and "11/4/2020".

Role Maintenance

The following Task has been added to Accounts Payable, Setup Options:

- Royalty Edit Maintenance

The following Task has been added to Accounts Payable, Miscellaneous Tasks:

- Royalty Purge Utility

The following Task has been added to Inventory Management, Setup Options:


- Item Royalty Maintenance

You should visit this Setup screen after each upgrade or reinstallation of this Extended Solution.

Section D: System Operations

Item Royalty Maintenance

Item Royalty Maintenance has been added to the Inventory Setup menu. On this screen you will specify, for each Inventory Item, its A/P Vendor and a Royalty percentage. The 'Standard Price' and 'Standard Cost' for this item from the Inventory Masterfile will also display.

The  allows you to search the file for existing Royalty Item Records in a new ALE.

Item Number	Vendor No	Royalty Percent
1001-HON-H252	01-AIRWAY	3.000%
1001-HON-H252LK	01-ALLCLIM	2.000%
2551-3-50	01-CONT	1.000%

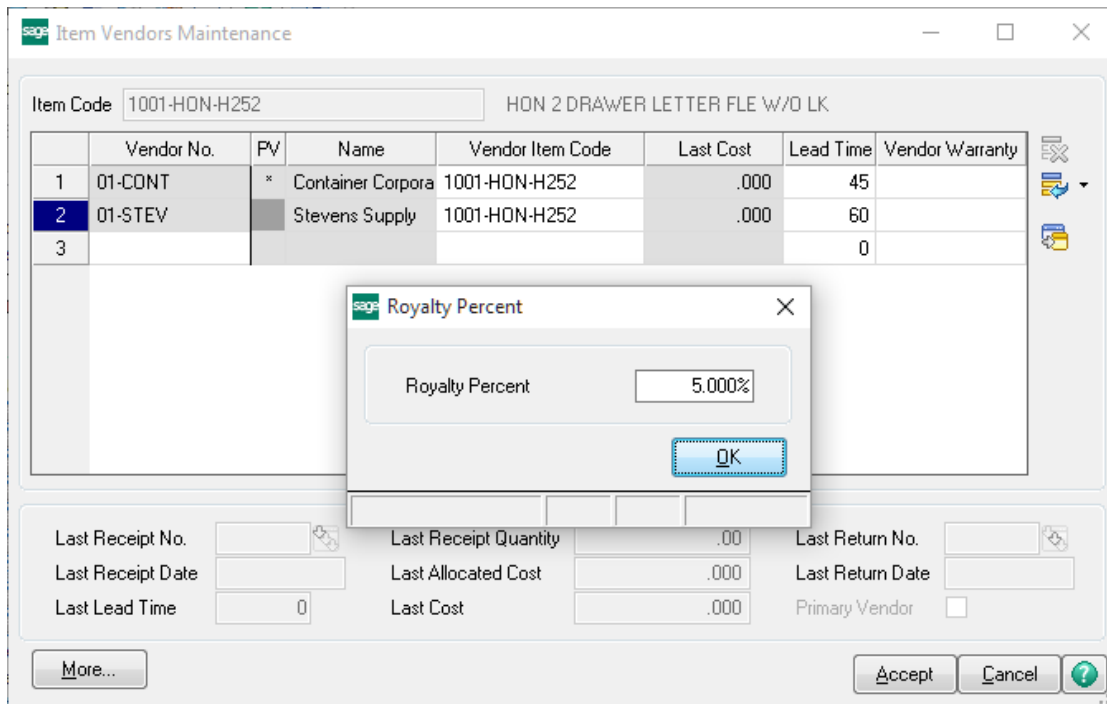
Below the table, there is a search section with a dropdown menu set to 'Item Number', a 'Begins with' dropdown, and an empty search box. There are 'Find', 'Filters...', 'Custom...', and 'Lookup Wizard...' buttons. At the bottom, there are 'Select', 'Cancel', and other utility icons. A status bar at the bottom left says 'Found 3 records' and the bottom right shows 'DSD ABC 11/30/2016'.

A listing is available to print.

ITEM ROYALTY LISTING			NDC Company
Item Number	Vendor Number/Name		Royalty Percent
1001-HON-H252	00-AIRWAY	Airway Property	9.000%
101	01-COMPAQ	Compaq Computer Corporation	5.000%
101	01-CONT	Container Corporation Of Usa	15.000%

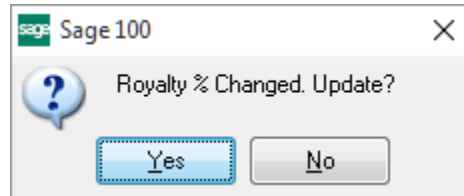
Item Vendors Maintenance

Item Vendors Maintenance has been modified with a new 'Royalty Percent' field, which can be accessed via the 'More' button.



This field will allow you to add or modify a record in the Item Royalty Maintenance file 'on-the-fly.' The system will check the file for an existing record. If the vendor/item record exists, it will display its current Royalty Percentage. If there is no current record on file, then it will display 0%.

When the value in the Royalty Percent field has been modified and you click 'OK,' the following message will display:



If you answer 'Yes,' and there was no previous record in Item Royalty Maintenance, one will be created. If one existed, then the new Percentage will be updated.

If you answer 'No,' then the modified value on the Royalty Percent field will be ignored and the cursor will move to the 'OK' button.



Sales Order Sales Journal Update

During S/O Sales Journal update, the Extended Solution will check each Inventory line to see if there are any records in the Item Royalty Maintenance file that match this Inventory Item. For each match it finds, a record will be written to the A/P Royalty Detail file, one for each Item/Vendor. The program will use the Royalty Percent defined for that Item/Vendor to create a Royalty Amount calculated by Item as (Sales Amount * Royalty Percent).

A/P Royalty Edit Maintenance

All of the records created from Sales Journal update are available for viewing on this new option to the A/P Setup menu (Figure 6). 'Royalty to Pay' defaults from Royalty Amount during Sales Journal update, and may be edited here.

Vendor No.	01-AIRWAY	Item Code	1001-HON-H252	Item Sales Amount	7,980.00
Name	Airway Property	Invoice No.	0100057	Item Cost of Goods Sold	3,425.00
Invoice Date	11/30/2016	Royalty Amount	239.40	Royalty Percent	3.000%
Invoice Total	7,980.00	Royalty To Pay	239.40		

You must specify a Vendor Number/Item Code/Invoice Number to recall a record. If the Vendor Number is defined, then the  next to the Vendor Number field will recall only existing records in the file. If the Vendor Number has already been defined, then the  next to the Item Code field will only display Item records for that Vendor.

The lookup button next to the Invoice Number field allows you to see only the invoices for the currently selected Item/Vendor.

Once an Item/Vendor/Invoice Number has been selected then the only the 'Royalty to Pay' field is open for edit; all other fields associated with the record are display only:

Invoice Date: SO Invoice Date

Invoice Total: The total amount of the current invoice.

Royalty Amount: Royalty Percent * Invoice Line Extension.

Item Sales Amount: Invoice Line Extension.

Item Cost of Goods Amount: Unit Cost * Quantity Shipped.

Royalty Percent: The Royalty Percent used for this invoice

'Royalty to Pay' defaults from the Royalty Amount during Sales Journal Update. As a change is made to 'Royalty to Pay,' the program will set a 'Flagged for Edit' field to 'Y,' therefore printing it on a new report which is available via the Print Button. This report will detail each of the records which were modified in Royalty Edit Maintenance (i.e., any record in the file that has a 'Y' in its 'Flagged for Edit' field). After printing is complete, all Flagged for Edit fields will be set to 'N.' See Figure 7 an example of the report.

Royalty Detail Listing							NDC Company (NDC)		
Item No	Invoice No	Date	Invoice Total	Sales Amount	COGS Amount	Royalty %	Royalty Amount	Royalty To Pay	
01-AIRWAY		Airway Property							
1001-HON-H252	0100080	8/21/2008	181.44	180.18	68.50	10.00	18.02	18.77	
1001-HON-H252	0100081	8/22/2008	74.00	74.00	34.25	10.00	7.40	7.69	
1001-HON-H252	0100082	7/14/2008	90.00	90.00	34.25	10.00	9.00	9.44	
01-ALLCLIM		Allclimate Maintenance							
1001-HON-H252	0100080	8/21/2008	181.44	180.18	68.50	8.13	14.64	14.98	
1001-HON-H252	0100081	8/22/2008	74.00	74.00	34.25	8.13	6.01	6.15	
1001-HON-H252	0100082	7/14/2008	90.00	90.00	34.25	8.13	7.31	7.66	
01-ANDERS		Anders Auto Repair							
1001-HON-H252	0100080	8/21/2008	181.44	180.18	68.50	7.73	13.92	14.06	
1001-HON-H252	0100081	8/22/2008	74.00	74.00	34.25	7.73	5.72	5.91	
1001-HON-H252	0100082	7/14/2008	90.00	90.00	34.25	7.73	6.95	7.81	
01-STEVE		Stevens Supply							
1001-HON-H252	0100080	8/21/2008	181.44	180.18	68.50	1.10	1.98	2.11	
1001-HON-H252	0100081	8/22/2008	74.00	74.00	34.25	1.10	0.81	0.97	
1001-HON-H252	0100082	7/14/2008	90.00	90.00	34.25	1.10	0.99	1.20	

AP Period End – Royalty Purging

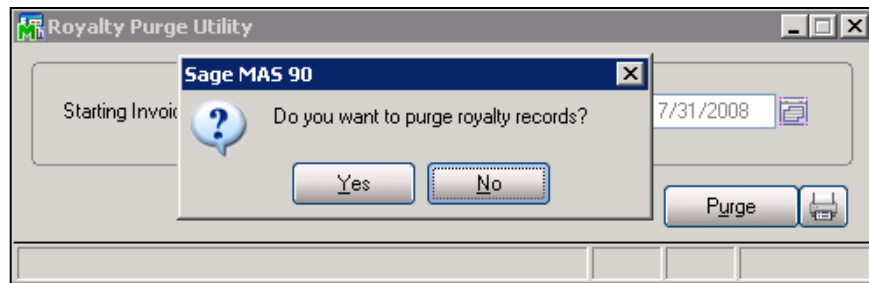
A Royalty Purge Utility has been added to the A/P Utilities menu (Figure 8). This allows you to clear the existing records from the file by a range of S/O Invoice Dates.

After filling in the Starting and Ending Invoice dates, you will have these options:

Print: This option will print a report listing all the records that will be deleted (Figure 9). It will then prompt to Purge (Figure 10). If you answer 'Yes,' then all records in the file between the date range entered will be deleted. If you answer 'No,' then you will be returned to the launcher.

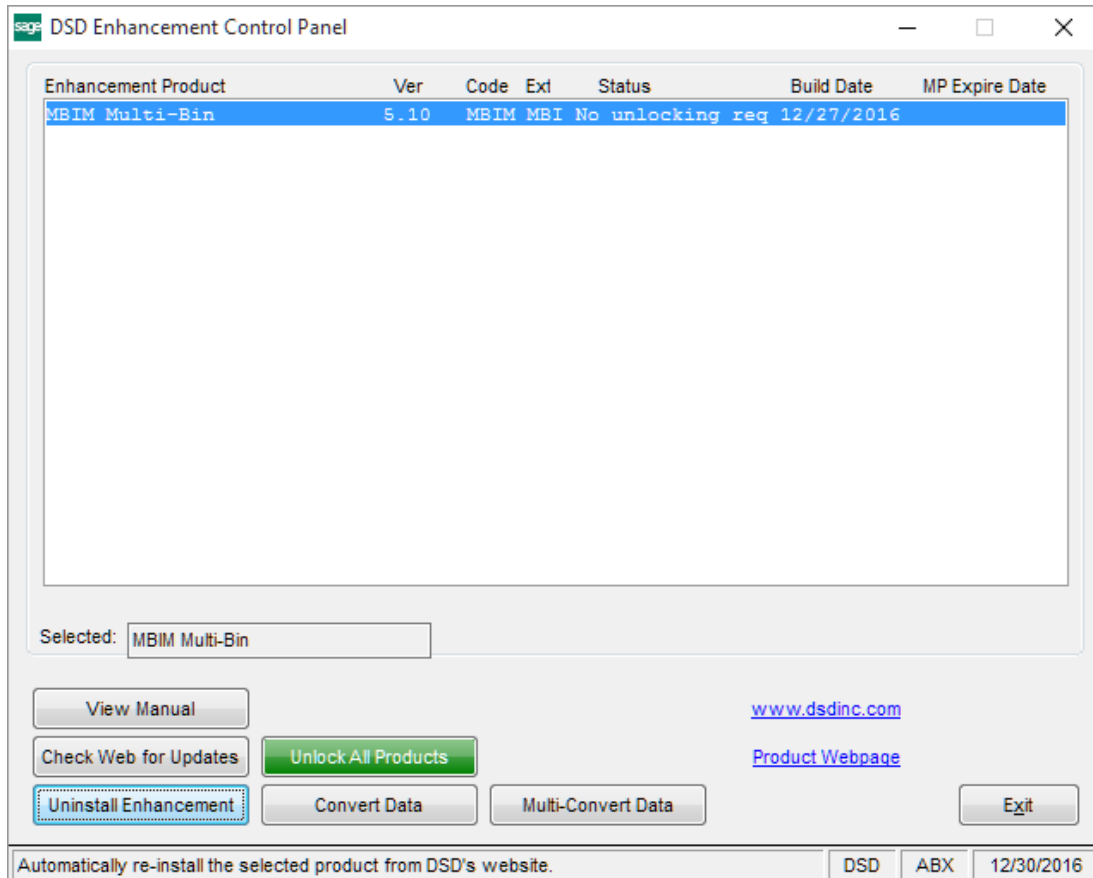
Purge: This option will delete records in the date range with no report of what has been deleted. It will present you with the same 'Do You Want to Purge Royalty Records' prompt before proceeding.

Royalty Purge Report		Purge Records From 07/01/2008 To 07/31/2008 NDC Company (NDC)						
Item No	Invoice No	Date	Invoice Total	Sales Amount	COGS Amount	Royalty %	Royalty Amount	Royalty To Pay
01-AIRWAY	Airway Property							
1001-HON-H252	0100082	7/14/2008	90.00	90.00	34.25	10.00	9.00	9.44
01-ALLCLIM	Allclimate Maintenance							
1001-HON-H252	0100082	7/14/2008	90.00	90.00	34.25	8.13	7.31	7.66
01-ANDERS	Anders Auto Repair							
1001-HON-H252	0100082	7/14/2008	90.00	90.00	34.25	7.73	6.95	7.81
01-STEV	Stevens Supply							
1001-HON-H252	0100082	7/14/2008	90.00	90.00	34.25	1.10	0.99	1.20

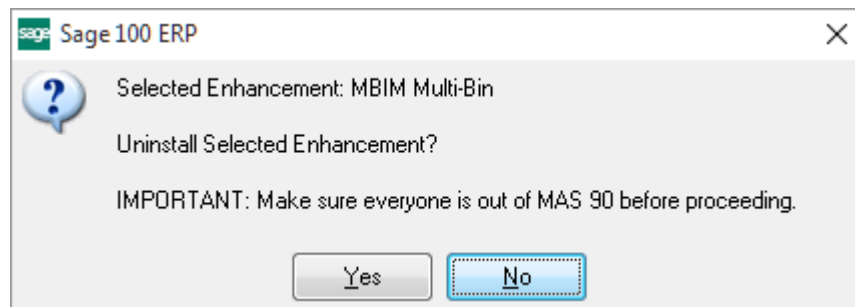


Section E: Uninstall DSD Enhancements

A DSD Enhancements Uninstall Utility has been provided for the purposes of removing DSD Enhancements from your Sage 100 System. This utility may be accessed from the **DSD Enhancement Control Panel** menu option on the **Library Master / Utilities** menu.

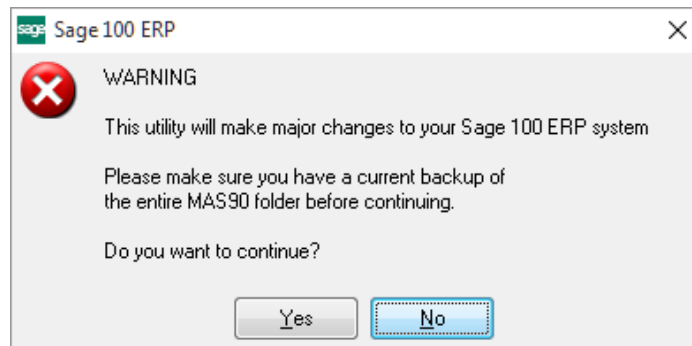


When accessing the **DSD Enhancement Control**, select the enhancement that you wish to Uninstall, and then select the **Uninstall Enhancement** button. The following message box will appear:



Select **No** to exit the Uninstall Process.
 Select **Yes** to continue with the Uninstall Process.

The following message box will appear, to remind you that a complete backup of your entire Sage 100 system should be completed prior to uninstalling a DSD product.



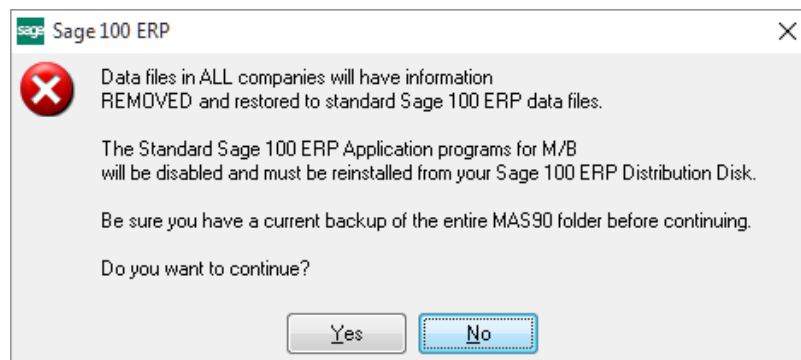
Select **No** to exit the Uninstall Process.
Select **Yes** to continue with the Uninstall Process.

After the Uninstall of the DSD Enhancement, you MUST reinstall certain standard Sage 100 modules, followed by reinstallation of Product Updates and Hot Fixes, if applicable.

A message box will appear, and will display which of those specific Sage 100 modules you must reinstall afterwards.

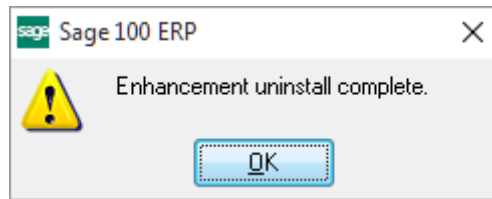
Select **No** to exit the Uninstall Process.
Select **Yes** to continue with the Uninstall Process.

The following message box will appear, displaying the final warning message.



Select **No** to exit the Uninstall Process.
Select **Yes** to continue with the Uninstall Process. At this point, the DSD Enhancement will be removed from the Sage 100 system.

After completion of the Uninstall, the following message box will appear. Select OK to continue.



Now that the Uninstall process is completed, you must:

- Reinstall the applicable standard Sage 100 modules
- Reinstall the latest Sage 100 Service Pack/Updates, if applicable.
- Reinstall any other DSD Enhancements or Developer products that are affected from the reinstallation of the standard Sage 100 module(s).