



DSD Business Systems

Sage 100 Enhancements

I226

I/M Transfers with Additional Costs

IM-1226

Version 7.20



Information in this document is subject to change without notice.

Copyright 1993-2023, DSD Business Systems All rights reserved.

I/M Transfers with Additional Costs User's Manual
Version 7.20

9 June, 2023

DSD Business Systems
8787 Complex Drive
Suite 400
San Diego, CA 92123
858/550-5900 8:00am to 5:00pm PST
858/550-4900 Fax

Trademarks

ProvideX® is a Trademark of Sage Software.

Windows is a trademark of Microsoft Corporation.

Sage 100® is a registered trademark of Sage Software.

PXPlus® is a registered trademark of PVX Plus technologies

All other product names and brand names are service marks, and/or trademarks or registered trademarks of their respective companies.

This documentation and the software described herein, is prepared and published under license. Sage Software has not tested or verified either the software or any representation in this documentation regarding the software. Sage Software does not make any warranty with respect to either this documentation or the software described herein, and specifically disclaims any warranty, express or implied, with respect hereto, including the warranties of fitness for a particular purpose and merchantability.

Table of Contents

SECTION A: INTRODUCTION	5
WEB RESOURCES	5
SUPPORT	5
I/M TRANSFERS WITH ADDITIONAL COSTS FEATURES.....	6
SECTION B: GETTING STARTED	7
REQUIRED LEVELS.....	7
INSTALLATION.....	7
DSD ENHANCEMENT CONTROL PANEL.....	9
SECTION C: SETUP	11
PRODUCT LINE MAINTENANCE	12
SECTION D: SYSTEM OPERATIONS	13
Using Transfer Codes.....	15
VISUAL INTEGRATOR	17
CRYSTAL REPORTS AND THE ODBC DICTIONARY	17
SECTION E: UNINSTALL DSD ENHANCEMENTS	18

Section A: Introduction

This manual contains a description and instructions for this DSD product. Operating instructions are included for the features added by this product to Sage 100. For instructions on using Sage 100, refer to the appropriate Sage 100 manual, or call your Sage 100 reseller. DSD Business Systems offers excellent Sage 100 support, at an hourly rate.

Web Resources

DSD web site: <http://www.dsdinc.com>

The Enhancement page contains:

- Current Release Schedule*
- Purchasing Information*
- Installation Instructions*
- Product Support*
- Enhancement Links*

1226 I/M Transfers with Additional Costs:

<http://www.dsdinc.com/enhancement/im-1226-transfers-with-additional-costs>

The product web page contains:

- Product Description*
- Web Links*
- Current Product Version Table*
- Product Installation File Download*
- Product Manual in .pdf Format*
- Revision History*
- FAQ*

Support

DSD provides product support through Sage 100 resellers. Support is provided for the current version. Older versions are supported at an hourly rate. DSD's telephone number is **858-550-5900**. Fax: **858-550-4900**.

For a hard error, where the program displays an error dialog, report:

- Error number.*
- Program name.*
- Line number.*
- Program version.*
- Exact sequence that caused the error, including menus and menu selections.*

Other pertinent information.

If leaving a message or faxing, please include:

Your name.

Your phone number (and fax if applicable) and extension.

It is possible to be unable to duplicate a problem, because of data corruption or because we have not exactly duplicated a particular operating environment. In such circumstances, we can only continue to try to fix the problem if we can either access the system with Symantec PCAnywhere or by some other means access or duplicate the system.

I/M Transfers with Additional Costs Features

This DSD Extended Solution to the Inventory Management module adds an Additional Cost field and a G/L Account Number field to the lines tab of I/M Transaction Transfers. It will be available for all Valuation methods except 'Standard Cost.' You can add costs to Items as they are transferred from one Warehouse to another and specify the G/L account that will hold the difference.

Additional functionality is available if you also have Extended Solution IM-1060: *Last Cost By Warehouse* installed and enabled.

Section B: Getting Started

CAUTION

- **If you reinstall or upgrade one of the Sage 100 modules listed in the following table, you must also reinstall this Enhancement.**
- Enhancements from different Sage Developers are generally not designed to work together. If installed together, problems are likely to occur.
- **Check with DSD before installing more than one Enhancement.**

Required Levels

Sage 100 Module	Module Required	Required Level
I/M	Y	7.20

Installation

1. **Back-up:** Exit all Sage 100 sessions. Back-up existing Sage 100 data.
2. **Check Levels:** Sage 100 module levels **must match** those listed above.
3. **Run Enhancement Setup Program:** Save the executable installation program (sent to you or downloaded from our website) in a convenient location on the Sage 100 server. Launch the program from Windows Explorer or by selecting Start/Run, and then browse for the file in the location you saved it. Follow on-screen instructions.
4. **Send your Sage Serial Number to your DSD Representative:** Send your Sage Serial Number to your DSD representative in order for us to send you back the encrypted keys to unlock your system. This serial number can be found in Library Master\Setup\System Configuration, Tab 3. Registration as Serial Number.
5. **Re-Start Sage 100:** Sage 100 will be updated.
6. **Unlock the Enhancement:** DSD Enhancements must be unlocked to run. When any part of the Enhancement is run for the first time, the **DSD Enhancement License Agreement and Activation** window will appear. Follow the steps shown on that window. *You can click the Help button for more detailed instructions.*

Note: On the next page is a screenshot of the DSD Enhancement License Agreement and Activation window.

After accepting the License Agreement, you can then select the type of unlocking that you'd prefer. The choices are File, Web, Demo and Manual Entry.

File Unlock: After receiving your encrypted serial number key file from DSD, and placing that file in the MAS90/SOA directory, selecting this option will unlock all products keys contained in the file. This means you can unlock all enhancements at once using this option.

Web Unlock: If the system that is running the DSD Enhancement *has web access* and you *have sent DSD your Sage Serial number*, you can unlock the Enhancement without assistance using Web

Unlock. When this option is selected, the program will attempt to download encrypted serial number key file from DSD *and then proceed to unlock all enhancements contained in the file.*

- *The Sage 100 system that is being used must have web access for this option to be effective.*
- *You can send your Sage Serial Number to your DSD Enhancements sales representative.*

Demo Unlock: If a Demo mode is available for the Enhancement you're running, you will be able to Demo unlock the product without assistance from DSD for demo purposes.

- *Creating a Demo Unlock is a good way to temporarily unlock DSD Enhancements off-hours, if you do not have web or email access. Later, you can unlock the product fully, during business hours.*

Manual Entry Unlock: If you want to unlock a single enhancement using a single encrypted key, you can select this option and enter the 64 character key you receive from DSD by copy and paste.

Note: *You can also unlock a DSD Enhancement through the **DSD Enhancement Control Panel** found on the **Library Master Utilities Menu**. Then, select the Enhancement with your mouse from the list of Enhancements and click the **Unlock Product** button on the right side of the window.*

- Convert Data:** After unlocking, the DSD Conversion Wizard will appear. Follow on-screen instructions to complete data conversion. *You can exit the conversion program without converting data. The Enhancement will not proceed, however, until data is converted. If you enter an enhanced program and data has not been converted, the conversion program will run again.*

DSD Enhancement Control Panel

Starting with version 3.61, all DSD Enhancement products include DSD's Enhancement Control Panel. The **DSD Enhancement Control Panel is accessed from the Library Master Utilities menu.**

The DSD Enhancement Control Panel is a simple to use yet powerful system to help maintain DSD Enhancements installed on a Sage 100 system. To use it, select an Enhancement product from the list on the window and then click the button, on the right side of the window, which corresponds with the desired task.

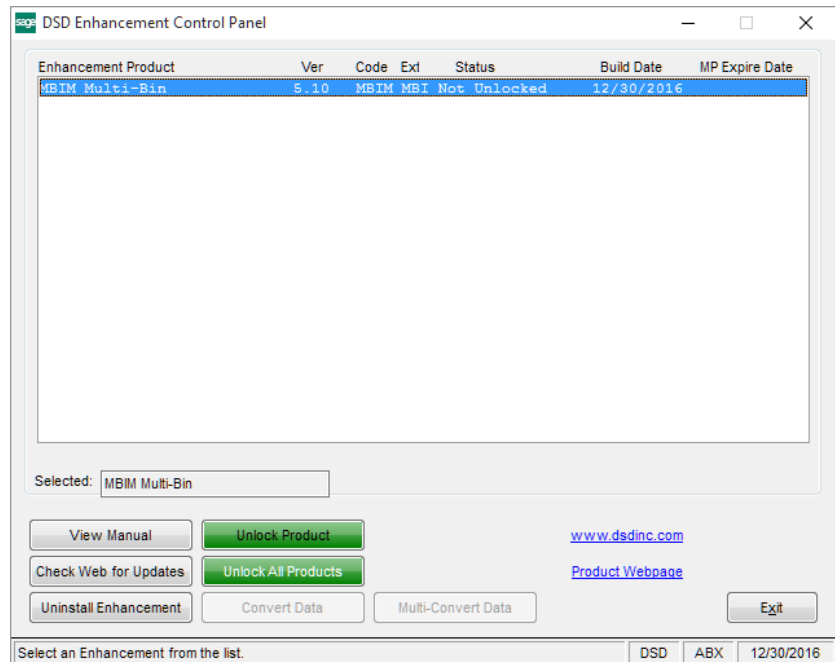
View Manual: This button will display the product manual for the selected Enhancement using Adobe Acrobat. For this to be possible, the PDF file for the corresponding manual must be in the "MAS90/PDF" folder in the Sage 100 system. If the file is not present, and the system has web access, the correct PDF file will be automatically downloaded from the DSD website, put into the "MAS90/PDF" folder and then displayed.

Check the Web for Updates: This button will check the DSD website to see what the current build is the selected Enhancement and alert the user if a later version is available. *This requires an internet connection on the Sage 100 system.*

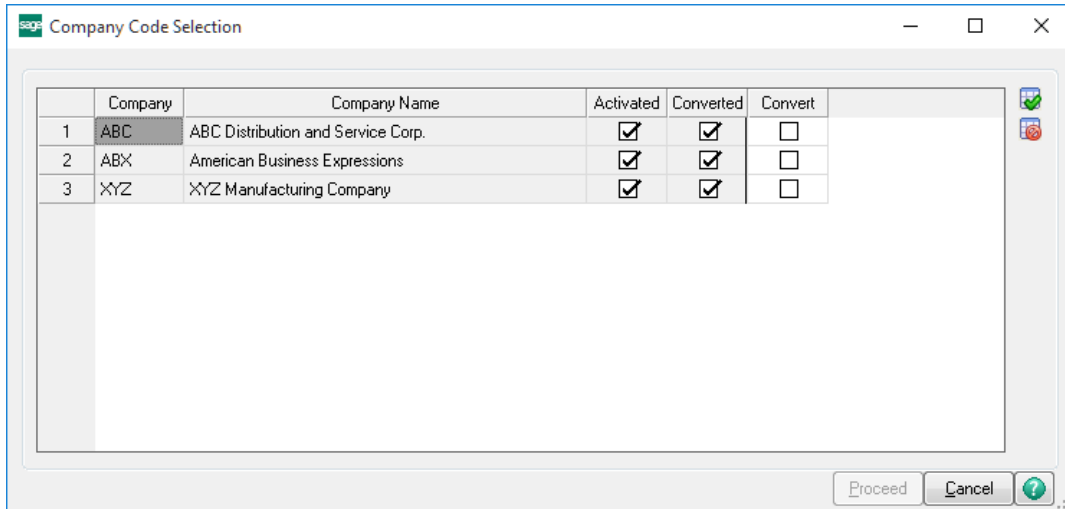
Unlock Product: This will cause the DSD Enhancement License Agreement and Activation window to appear. Using this window is described on the previous page. *This button is disabled if the selected Enhancement is already unlocked or if unlocking is not required.*

Unlock All Products: This will cause the DSD Enhancement All License Agreement and Activation window to appear. This window is similar to the one described on the previous page, but has only web and file as options to unlock. *This button is never disabled.*

Convert Data: After verification, the selected Enhancement's data conversion program will run. Data conversion is non-destructive, and may be triggered any number of times. Sometimes this is required to fix data records imported or updated from a non-enhancement installation.



Multi-Convert Data: Multiple Companies can be converted at the same time for a given Enhancement. *(If you have a large number of Companies to convert, please do in batches of 20 or fewer due to memory limitations.)*



Help: The Help button, located at the bottom right of the window, opens an HTML help file.

Get Adobe Acrobat: Opens the Adobe Acrobat website to the page where Acrobat can be downloaded and installed.

Uninstall Enhancement If this option is available, then selecting this button will start the un-install process, removing the enhancement from the system. (for more information see [Uninstall DSD Enhancements](#))

Section C: Setup

Upon completion of software installation, you will need to access the DSD Extended Solutions Setup from the Inventory Management Setup menu. Select this part number and the Setup screen for this Extended Solution will appear. Check the 'Enable DSD Extended Solution' box to activate this Extended Solution.

Note that checking the 'Enable DSD Extended Solution' will cause a new option to be added to the IM Setup Menu: Transfer Code Maintenance.

The screenshot shows a window titled "IM-1226 Setup Options" with a close button (X) in the top right corner. The window content is titled "I/M Transfers With Additional Costs". It features two rows of options:

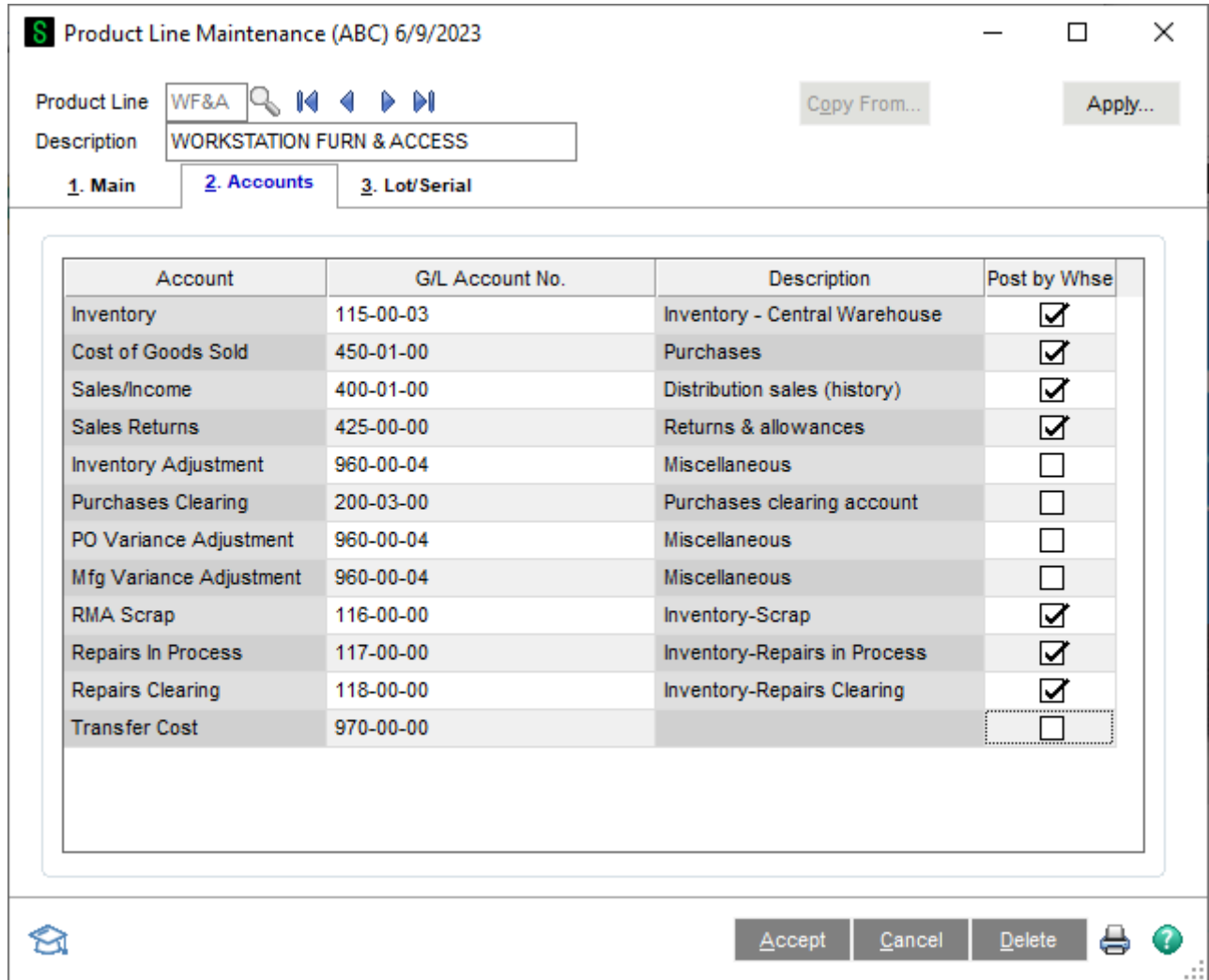
- "Enable DSD Extended Solution" with a checked checkbox and "Level 7.20" to its right.
- "Use Transfer Codes" with an unchecked checkbox.

At the bottom right of the window are "Accept" and "Cancel" buttons. A status bar at the bottom of the window displays "DSD | ABC | 5/8/2023".

You should visit this Setup screen after each upgrade or reinstallation of this Extended Solution.

Product Line Maintenance

A new Transfer Cost G/L Account field has been added to the Product Line Maintenance Accounts Panel.



This new account will be set to the Additional Cost Account field in Transaction Entry.

Section D: System Operations

The Lines Tab of I/M Transaction Transfers has been modified with two additional fields for each Line, accessible via the Secondary Grid:

Transaction Entry (ABC) 6/9/2023

Transaction Type: Transfers

Entry Number: 00000001

1. Header | 2. Lines

	Item Code	Quantity	Unit Cost	Extension
1	1001-HON-H252	1.00	35.750	35.75
2		.00	.000	0.00

Distrib Required:

Transfer Code:

Additional Cost: .000000

Cost Account:

On hand quantity in transfer warehouse is 2676 EACH

Accept Cancel Delete

Additional Cost (which will match the Cost mask specified in I/M Setup) and **Cost Account**.

If an Additional Cost is specified, you must define a G/L Account Number. If a Transfer Cost is setup in I/M Product Line Maintenance, then that account will be defaulted as the Additional Cost Accounts, and the data entry will to Warehouse Segment Substitution, if selected in Product Line Maintenance. Both fields can be moved to the Primary Grid.

14 Costs

I/M Transfers with Additional

The Transaction Register will be modified to print the Additional Cost Account & Additional Cost as an additional line following the Item Number/Description.

Inventory Transaction Register				ABC Distribution and Service Corp. (ABC)			
Journal Posting Date: 9/16/2013							
Transfers Register Number: IT-000001							
Reference	Transaction	Comment	Unit of				
Item Code	Date	Description	Measure	Whse	Quantity	Unit Cost	Extension
00000002	9/16/2013	Test IM-1226 Trfs	From Warehouse : 000				
DESK0		Oak Desk	EACH	001			
		Additional Cost Account: 115-01-00			Addl. Cost:	50.00	
		Serial: 1000				1.00	750.000
		Serial: 1001				1.00	750.000
DESKSET		Desk Set	EACH	001		5.00	35.000
		Additional Cost Account: 115-01-00			Addl. Cost:	5.00	
LEATHER PACKAGE		Leather seats,dash,side panels	EACH	001		5.00	1,200.000
		Additional Cost Account: 115-01-00			Addl. Cost:	75.00	
SPEAKERS		SPEAKERS	EACH	001		5.00	150.000
		Additional Cost Account: 115-01-00			Addl. Cost:	10.00	
TAPEDIS		Tape Dispensers	EACH	001			
		Additional Cost Account: 115-01-00			Addl. Cost:	0.50	
		Lot: 500				10.00	7.500
							80.00
						Transaction Total:	9,055.00
						Report Total:	9,055.00

The EXTENSION column will print the result of: (Unit Cost + Additional Cost) * Qty

For Items whose valuation method is: FIFO, LIFO, Lot or Serial, Transaction update of Transfers with additional costs will do the following:

- Increase or decrease the Unit Cost of the tier(s) associated with the transfer by the Additional Cost amount into the 'To' Warehouse. Value leaving the 'From' Warehouse will remain unchanged
- Post the difference between the Cost Extension coming out and the Cost extension going in to the General Ledger account specified on the line.
- The Last Cost fields* in CI_Item will be updated with 'Last Cost' equal to the From WHS Unit Cost, 'Allocated' set to the 'Additional Cost' and 'Total Last Cost' as the sum of the two.

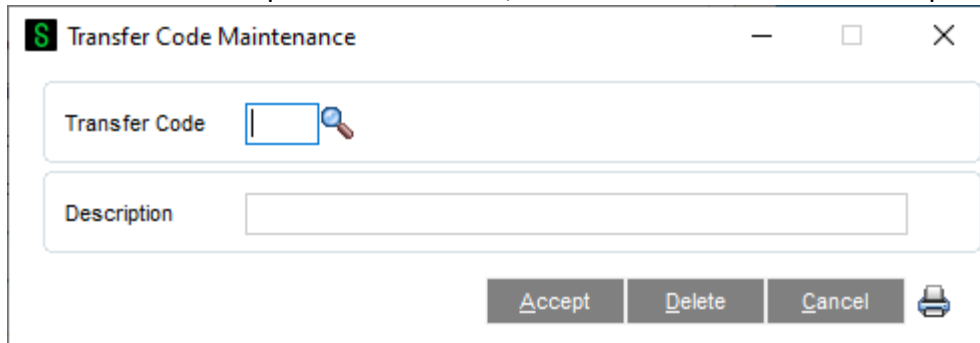
For Items with a valuation method of Average, Transaction Update of Transfers with Additional Costs will perform the following:

- Post the difference between the Cost Extension coming out and the Cost extension going in to the General Ledger account specified on the line.
- The Last Cost fields* in CI_Item will be updated with 'Last Cost' equal to the From WHS Unit Cost, 'Allocated' set to the 'Additional Cost' and 'Total Last Cost' as the sum of the two

**Update of CI_Item's Last Cost fields will only be as good as the LAST transaction updated referencing this Item Number. Therefore, if multiple transfer transactions are being updated at once and an item is referenced on more than one transfer, then the last one will be reflected in the CI_Item fields.*

Using Transfer Codes


A new Transfer Code Maintenance option will be added to the IM Setup Menu. On this screen, you can define a list of valid 4 character alphanumeric codes, each with a 30 character description.



Transfer Code Maintenance

Transfer Code

Description

Accept Delete Cancel 

A listing will be available for printing.

Transfer Code Listing		ABC Distribution and Service Corp. (ABC)
Transfer Code	Description	
DEF	Defective Transfer	
DEFL	Defective Transfer, Lost	
DEFW	Defective Transfer, Warranty	
DES	Destroyed in Transfer	
IWH	Intra Warehouse	
LOST	Transfer Shrinkage	
SSH	Sales Shift	
XWH	Cross Warehouse	

The Lines Tab of I/M Transaction Transfers has been modified with the Transfer Code field added for each Line, accessible via the Secondary Grid. It can also be moved to the Primary Grid.

Transaction Entry (ABC) 6/9/2023

Transaction Type: Transfers

Entry Number: 00000001

1. Header | 2. Lines

	Item Code	Quantity	Unit Cost	Extension
1	1001-HON-H252	1.00	35.750	35.75
2		.00	.000	0.00

Quick Row: 1

Distrib Required:

Transfer Code: 71

Additional Cost: .000000

Cost Account:

Accept | Cancel | Delete

During Transaction Journal update, the program will write out the Transfer Code used to IM_ItemTransactionHistory.

With IM-1060

If IM-1060: *Last Cost By Warehouse* is installed and enabled, as the IM1 fields for 'Last Cost' and 'Allocated Cost' are updated and 'Total Last Cost' is calculated, this Extended Solution will also update these corresponding fields in the Warehouse file for the 'To' side of the transfer.

Visual Integrator

The files listed below have been added or changed in the Data Dictionary by this Extended Solution for Visual Integrator purposes.

<i>New File:</i>		<i>Field:</i>
IM_TransactionHeader	Trans Entry Header	AdditionalCost AdditionalCostAcct TransferCode
IM_ItemTransactionHistory	Item Transaction History	TransferCode

The Data Dictionary may contain other files and data fields that are not available without their corresponding Sage Software Extended Solutions installed.

Crystal Reports and the ODBC Dictionary

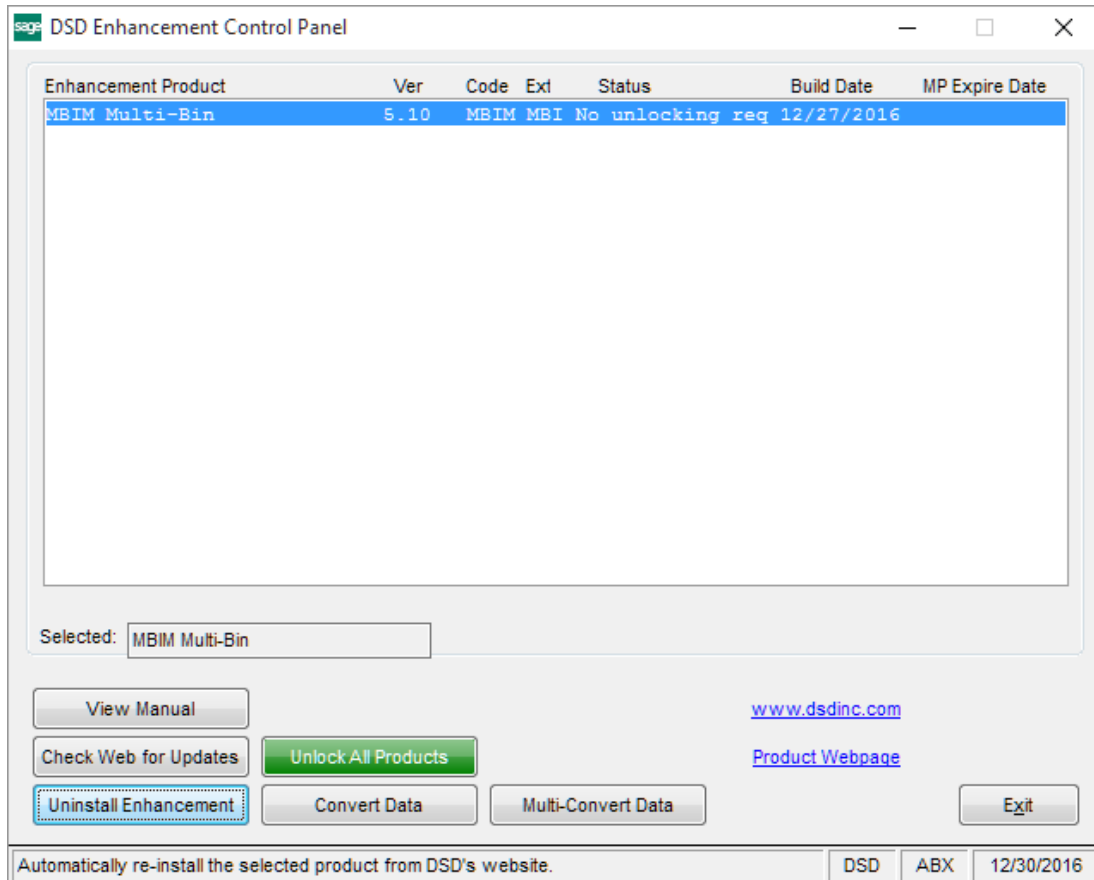
The files listed below have been added or changed in the ODBC Dictionaries by this Extended Solution for Crystal Reports purposes.

<i>File:</i>	<i>Description</i>	<i>Field:</i>
IM_TransferCode_234	Transfer Code File	All fields
IM_TransactionDetail	Trans Data Entry Line	AdditionalCost AdditionalCostAcct TransferCode
IM_TransactionRegisterWrk	IM Transaction Register	AdditionalCost AdditionalCostAcct
IM_TransactionPosting	Transaction Posting	TransferCode AdditionalCost
IM_ItemTransactionHistory	Item Transaction History	TransferCode

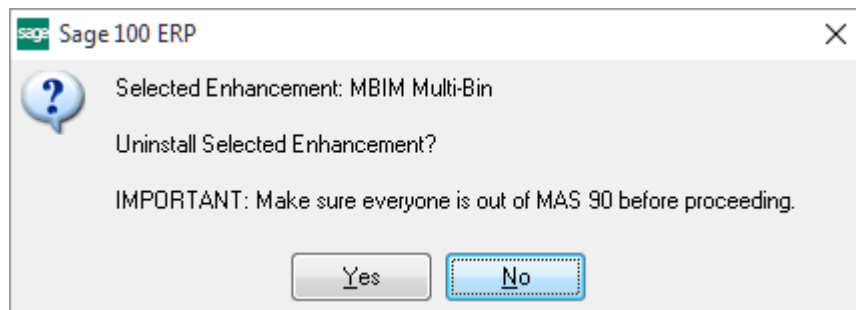
Be aware that the ODBC Dictionaries may contain other files and data fields that will be unavailable without their corresponding Extended Solutions installed.

Section E: Uninstall DSD Enhancements

A DSD Enhancements Uninstall Utility has been provided for the purposes of removing DSD Enhancements from your Sage 100 System. This utility may be accessed from the **DSD Enhancement Control Panel** menu option on the **Library Master / Utilities** menu.

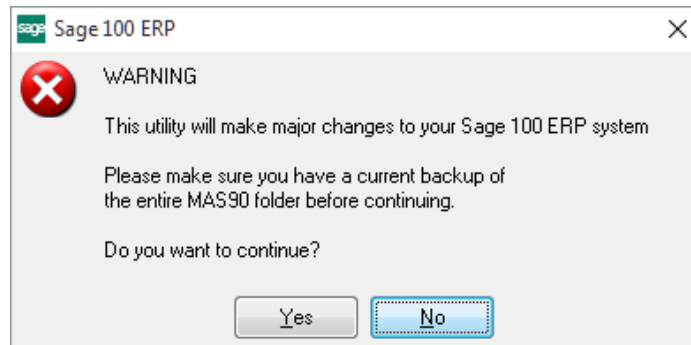


When accessing the **DSD Enhancement Control**, select the enhancement that you wish to Uninstall, and then select the **Uninstall Enhancement** button. The following message box will appear:



Select **No** to exit the Uninstall Process.
Select **Yes** to continue with the Uninstall Process.

The following message box will appear, to remind you that a complete backup of your entire Sage 100 system should be completed prior to uninstalling a DSD product.



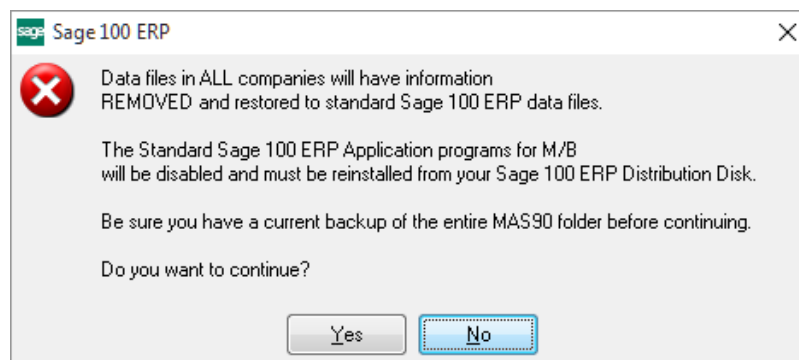
Select **No** to exit the Uninstall Process.
Select **Yes** to continue with the Uninstall Process.

After the Uninstall of the DSD Enhancement, you MUST reinstall certain standard Sage 100 modules, followed by reinstallation of Product Updates and Hot Fixes, if applicable.

A message box will appear, and will display which of those specific Sage 100 modules you must reinstall afterwards.

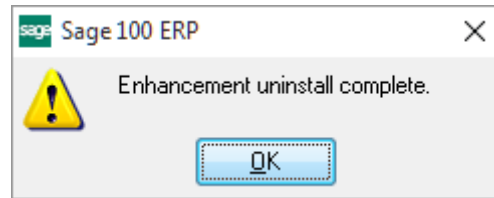
Select **No** to exit the Uninstall Process.
Select **Yes** to continue with the Uninstall Process.

The following message box will appear, displaying the final warning message.



Select **No** to exit the Uninstall Process.
Select **Yes** to continue with the Uninstall Process. At this point, the DSD Enhancement will be removed from the Sage 100 system.

After completion of the Uninstall, the following message box will appear. Select OK to continue.



Now that the Uninstall process is completed, you must:

- Reinstall the applicable standard Sage 100 modules
- Reinstall the latest Sage 100 Service Pack/Updates, if applicable.
- Reinstall any other DSD Enhancements or Developer products that are affected from the reinstallation of the standard Sage 100 module(s).