



DSD Business Systems

Sage 100 Enhancements

I224

Item Pricing by Delivery Code

IM-1224

Version 7.40



Information in this document is subject to change without notice.

Copyright 1993-2025, DSD Business Systems All rights reserved.

Item Pricing by Delivery Code User's Manual
Version 7.40

10 October, 2025

DSD Business Systems
8787 Complex Drive
Suite 400
San Diego, CA 92123
858/550-5900 8:00am to 5:00pm PST
858/550-4900 Fax

Trademarks

ProvideX® is a Trademark of Sage Software.

Windows is a trademark of Microsoft Corporation.

Sage 100® is a registered trademark of Sage Software.

PXPlus® is a registered trademark of PVX Plus technologies

All other product names and brand names are service marks, and/or trademarks or registered trademarks of their respective companies.

This documentation and the software described herein, is prepared and published under license. Sage Software has not tested or verified either the software or any representation in this documentation regarding the software. Sage Software does not make any warranty with respect to either this documentation or the software described herein, and specifically disclaims any warranty, express or implied, with respect hereto, including the warranties of fitness for a particular purpose and merchantability.

Table of Contents

SECTION A: INTRODUCTION **4**

 WEB RESOURCES 4

 SUPPORT 4

 ITEM PRICING BY DELIVERY CODE FEATURES..... 5

SECTION B: GETTING STARTED **6**

 REQUIRED LEVELS..... 6

 INSTALLATION..... 6

 DSD ENHANCEMENT CONTROL PANEL..... 8

SECTION C: SETUP **10**

SECTION D: SYSTEM OPERATIONS **11**

SECTION E: UNINSTALL DSD ENHANCEMENTS **15**

Section A: Introduction

This manual contains a description and instructions for this DSD product. Operating instructions are included for the features added by this product to Sage 100. For instructions on using Sage 100, refer to the appropriate Sage 100 manual, or call your Sage 100 reseller. DSD Business Systems offers excellent Sage 100 support, at an hourly rate.

Web Resources

DSD web site: <http://www.dsdinc.com>

The Enhancement page contains:

- Current Release Schedule*
- Purchasing Information*
- Installation Instructions*
- Product Support*
- Enhancement Links*

EEEE Item Pricing by Delivery Code:

<http://www.dsdinc.com/enh/pages/EEEE.htm>

The product web page contains:

- Product Description*
- Web Links*
- Current Product Version Table*
- Product Installation File Download*
- Product Manual in .pdf Format*
- Revision History*
- FAQ*

Support

DSD provides product support through Sage 100 resellers. Support is provided for the current version. Older versions are supported at an hourly rate. DSD's telephone number is **858-550-5900**. Fax: **858-550-4900**.

For a hard error, where the program displays an error dialog, report:

- Error number.*
- Program name.*
- Line number.*
- Program version.*
- Exact sequence that caused the error, including menus and menu selections.*
- Other pertinent information.*

If leaving a message or faxing, please include:

Your name.

Your phone number (and fax if applicable) and extension.

It is possible to be unable to duplicate a problem, because of data corruption or because we have not exactly duplicated a particular operating environment. In such circumstances, we can only continue to try to fix the problem if we can either access the system remotely or by some other to duplicate the system.

Item Pricing by Delivery Code Features

This Extended Solution adds two new Inventory pricing options: Item/Delivery Code Pricing and Customer/Delivery Code Pricing.

The Custom Office module must be activated.

Section B: Getting Started



• If you reinstall or upgrade one of the Sage 100 modules listed in the following table, you must also reinstall this Enhancement.

• Enhancements from different Sage Developers are generally not designed to work together. If installed together, problems are likely to occur.

- Check with DSD before installing more than one Enhancement.

Required Levels

Sage 100 Module	Module Required	Required Level
I/M	Y	7.40
S/O	Y	7.40

Installation

1. **Back-up:** Exit all Sage 100 sessions. Back-up existing Sage 100 data.
2. **Check Levels:** Sage 100 module levels **must match** those listed above.
3. **Run Enhancement Setup Program:** Save the executable installation program (sent to you or downloaded from our website) in a convenient location on the Sage 100 server. Launch the program from Windows Explorer or by selecting Start/Run, and then browse for the file in the location you saved it. Follow on-screen instructions.
4. **Send your Sage Serial Number to your DSD Representative:** Send your Sage Serial Number to your DSD representative in order for us to send you back the encrypted keys to unlock your system. This serial number can be found in Library Master\Setup\System Configuration, Tab 3. Registration as Serial Number.
5. **Re-Start Sage 100:** Sage 100 will be updated.
6. **Unlock the Enhancement:** DSD Enhancements must be unlocked to run. When any part of the Enhancement is run for the first time, the **DSD Enhancement License Agreement and Activation** window will appear. Follow the steps shown on that window. *You can click the Help button for more detailed instructions.*

Note: On the next page is a screenshot of the DSD Enhancement License Agreement and Activation window.

After accepting the License Agreement, you can then select the type of unlocking that you'd prefer. The choices are File, Web, Demo and Manual Entry.

File Unlock: After receiving your encrypted serial number key file from DSD, and placing that file in the MAS90/SOA directory, selecting this option will unlock all products keys contained in the file. This means you can unlock all enhancements at once using this option.

Web Unlock: If the system that is running the DSD Enhancement *has web access* and you *have sent DSD your Sage Serial number*, you can unlock the Enhancement without assistance using Web Unlock. When this option is selected, the program will attempt to download encrypted serial number key file from DSD and then proceed to unlock all enhancements contained in the file.

- The Sage 100 system that is being used must have web access for this option to be effective.
- You can send your Sage Serial Number to your DSD Enhancements sales representative.

Demo Unlock: If a Demo mode is available for the Enhancement you're running, you will be able to Demo unlock the product without assistance from DSD for demo purposes.

- Creating a Demo Unlock is a good way to temporarily unlock DSD Enhancements off-hours, if you do not have web or email access. Later, you can unlock the product fully, during business hours.

Manual Entry Unlock: If you want to unlock a single enhancement using a single encrypted key, you can select this option and enter the 64 character key you receive from DSD by copy and paste.

Note: You can also unlock a DSD Enhancement through the [DSD Enhancement Control Panel](#) found on the Library Master Utilities Menu. Then, select the Enhancement with your mouse from the list of Enhancements and click the **Unlock Product** button on the right side of the window.

- Convert Data:** After unlocking, the DSD Conversion Wizard will appear. Follow on-screen instructions to complete data conversion. *You can exit the conversion program without converting data. The Enhancement will not proceed, however, until data is converted. If you enter an enhanced program and data has not been converted, the conversion program will run again.*

DSD Enhancement Control Panel

Starting with version 3.61, all DSD Enhancement products include DSD's Enhancement Control Panel. The **DSD Enhancement Control Panel is accessed from the Library Master Utilities menu.**

The DSD Enhancement Control Panel is a simple to use yet powerful system to help maintain DSD Enhancements installed on a Sage 100 system. To use it, select an Enhancement product from the list on the window and then click the button, on the right side of the window, which corresponds with the desired task.

View Manual: This button will display the product manual for the selected Enhancement using Adobe Acrobat. For this to be possible, the PDF file for the corresponding manual must be in the "MAS90/PDF" folder in the Sage 100 system. If the file is not present, and the system has web access, the correct PDF file will be automatically downloaded from the DSD website, put into the "MAS90/PDF" folder and then displayed.

Check the Web for Updates: This button will check the DSD website to see what the current build is the selected Enhancement and alert the user if a later version is available. *This requires an internet connection on the Sage 100 system.*

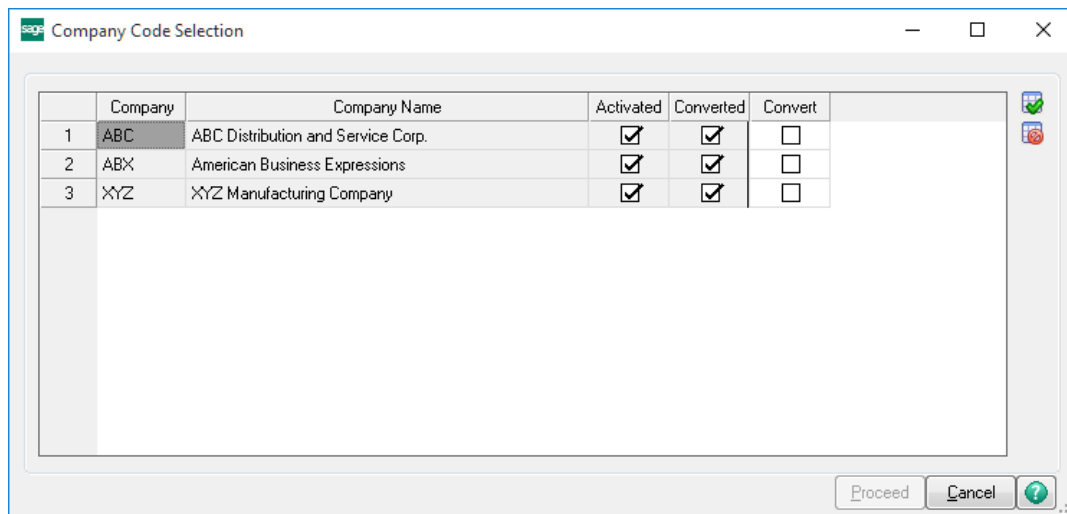
Unlock Product: This will cause the DSD Enhancement License Agreement and Activation window to appear. Using this window is described on the previous page. *This button is disabled if the selected Enhancement is already unlocked or if unlocking is not required.*

Unlock All Products: This will cause the DSD Enhancement All License Agreement and Activation window to appear. This window is similar to the one described on the previous page, but has only web and file as options to unlock. *This button is never disabled.*

Convert Data: After verification, the selected Enhancement's data conversion program will run. Data conversion is non-destructive, and may be triggered any number of times. Sometimes this is required to fix data records imported or updated from a non-enhancement installation.



Multi-Convert Data: Multiple Companies can be converted at the same time for a given Enhancement. *(If you have a large number of Companies to convert, please do in batches of 20 or fewer due to memory limitations.)*



Help: The Help button, located at the bottom right of the window, opens an HTML help file.

Get Adobe Acrobat: Opens the Adobe Acrobat website to the page where Acrobat can be downloaded and installed.

Uninstall Enhancement If this option is available, then selecting this button will start the un-install process, removing the enhancement from the system. (for more information see [Uninstall DSD Enhancements](#))

Section C: Setup

Upon completion of software installation, you will need to access the DSD Extended Solutions Setup from the Inventory Management Setup menu. Select this part number and the Setup screen for this Extended Solution will appear. Check the 'Enable DSD Extended Solution' box to activate this Extended Solution.

IM-1224 Setup Options

Item Pricing by Delivery Code

Enable DSD Extended Solution ☒ Level 7.40

S/O Detail UDF for Delivery Code

S/O Invoice Detail UDF for Delivery Code

S/O Detail UDF for Delivery Code Price

S/O Detail UDF for Markup Percentage

Accept Cancel

DSD ABC 10/10/2025

Answer the following prompts:

S/O DETAIL UDF FOR DELIVERY CODE: Specify the multi-line string UDF which holds the Delivery Code during Sales Order Entry.

S/O INVOICE DETAIL UDF FOR LINE DELIVERY CODE: Specify the multi-line string UDF which holds the Delivery Code during Sales Order Invoice Entry.

S/O DETAIL UDF FOR DELIVERY CODE PRICE: Specify the multi-line numeric UDF which holds the Delivery Code price. This option is not required.

S/O DETAIL UDF FOR MARKUP PERCENTAGE: Specify the multi-line numeric UDF which holds the Markup Percentage. This option is not required.

You will need to have S/O Invoice Detail UDFs of the same name for the 'Delivery Code Price' and 'Markup Percentage' set up to allow this functionality in Invoice Entry. You will need to add these new fields to the Sales Order grid via Customizer.


You should visit this Setup screen after each upgrade or reinstallation of this Extended Solution.

Section D: System Operations

Item Pricing Maintenance

Item Pricing Maintenance has been modified with two new Pricing Options: 'Item/Delivery Code Pricing' and 'Customer/Delivery Code Pricing.'

When 'Item/Delivery Code Pricing' is selected, the user will be prompted to enter a Price Level, a Delivery Code and pricing tiers.

 Item Pricing Maintenance

Item Code1001-HON-H252HON 2 Drawer Letter File w/o Lk

Pricing OptionItem/Delivery Code Pricing

Price Level1

Delivery CodeA

Standard Price84.000

Pricing MethodPrice Discount %

Standard Cost32.750

Step	From Quantity	To Quantity	Discount %	Unit Price
1	1	99,999,999	10.000%	75.600
2				
3				
4				
5				


Accept

Cancel

Delete

?

When 'Customer/Delivery Code Pricing' is selected, the user will be prompted to enter Customer Number, Delivery Code and pricing tiers.

 Item Pricing Maintenance


Item Code

1001-HON-H252

HON 2 Drawer Letter File w/o Lk



Pricing Option

Customer/Delivery Code Pricing



Customer No.

01-ABF

  American Business Futures

Delivery Code

A

Standard Price


84.000

Pricing Method

Price Discount %

Standard Cost


32.750

Step	From Quantity	To Quantity	Discount %	Unit Price
1	1	99,999,999	5.000% 	79.800
2				
3				
4				
5				

Accept

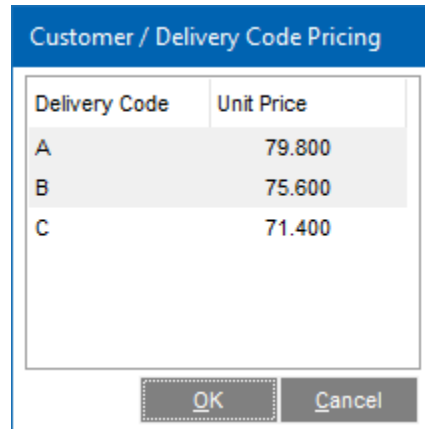
Cancel

Delete



Sales Order Entry

After the quantity ordered has been defined on a new line, the program will query the item pricing file for delivery pricing records. If they exist, you will be presented with Customer/Delivery Code Pricing. The list will sort by Delivery Code and display the Unit Price for that Delivery Code/Quantity

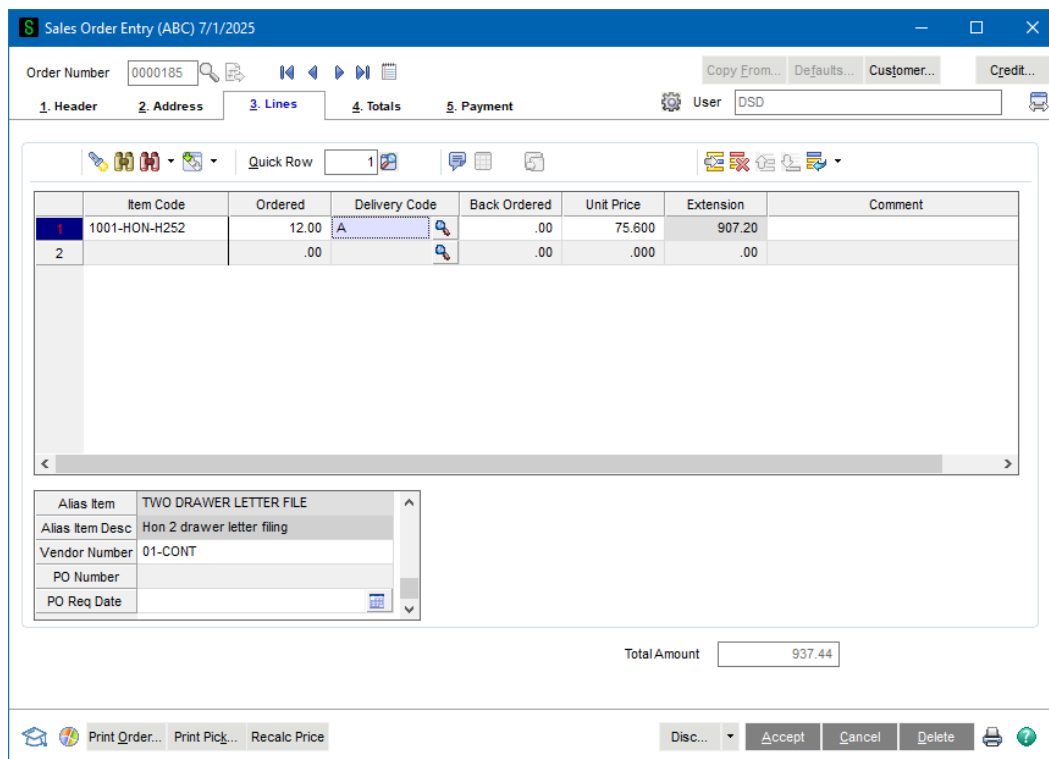


A dialog box titled "Customer / Delivery Code Pricing" with a table showing delivery codes and their unit prices. The table has two columns: "Delivery Code" and "Unit Price". The data is as follows:

Delivery Code	Unit Price
A	79.800
B	75.600
C	71.400

At the bottom of the dialog are "OK" and "Cancel" buttons.

Select the appropriate Delivery Code and it will be returned to the setup specified S/O Detail UDF with the line's Unit Price set to the corresponding value.



The "Sales Order Entry (ABC) 7/1/2025" window shows the following details:

- Order Number: 0000185
- Navigation tabs: 1. Header, 2. Address, 3. Lines, 4. Totals, 5. Payment
- User: DSD
- Quick Row: 1

	Item Code	Ordered	Delivery Code	Back Ordered	Unit Price	Extension	Comment
1	1001-HON-H252	12.00	A	.00	75.600	907.20	
2		.00		.00	.000	.00	

Below the table, the "Alias Item" section shows:

- Alias Item: TWO DRAWER LETTER FILE
- Alias Item Desc: Hon 2 drawer letter filing
- Vendor Number: 01-CONT
- PO Number:
- PO Req Date:

Total Amount: 937.44

Buttons at the bottom: Print Order..., Print Pick..., Recalc Price, Disc..., Accept, Cancel, Delete.

If you specified the Markup Percentage and Price UDFs in Setup then they will populate with zero in the Markup Percent and the same Unit Price in the Delivery Code Price. If you wish to modify the resulting Unit Price, you can add or subtract value by changing the Markup Percentage UDF. That percentage is applied to the Delivery Code Unit Price and the result is placed in the Unit Price field.

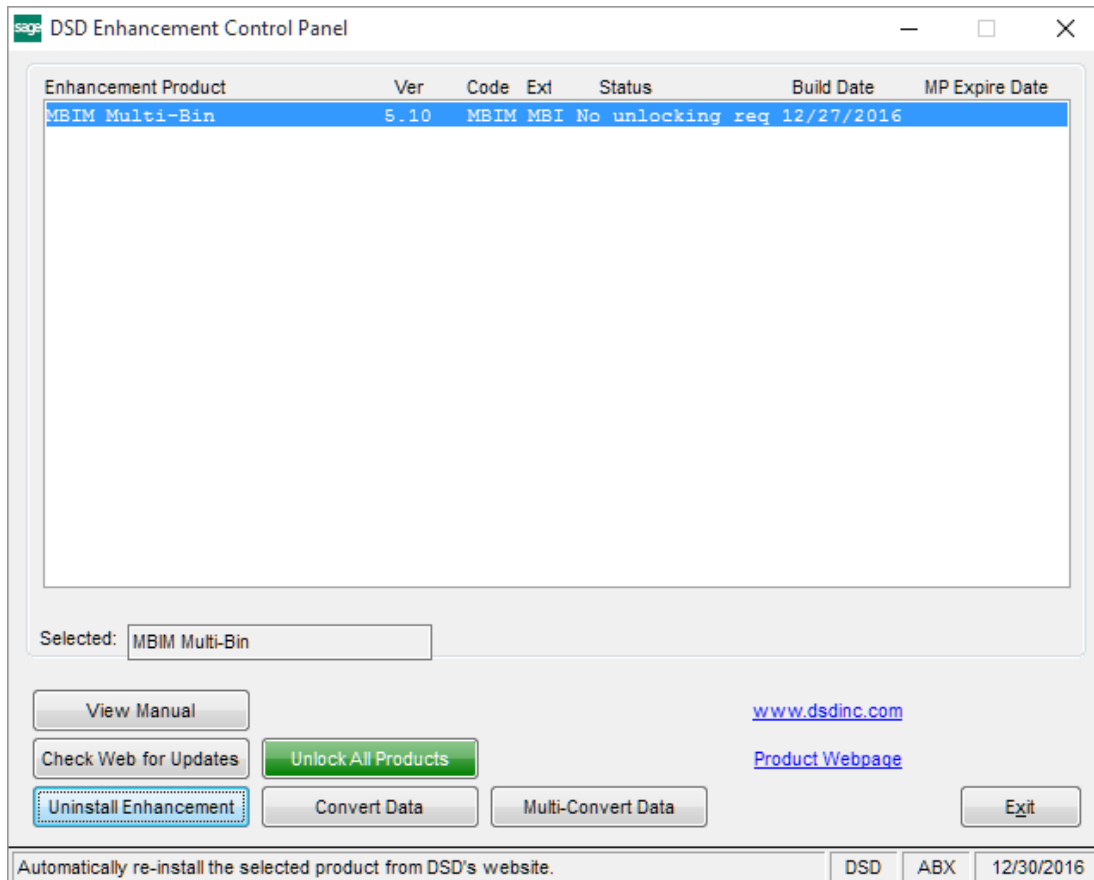
If Item/Delivery Code Pricing was used and the Price Level is changed on the line, the Customer /Delivery Code window will pop up again.

Invoice Entry

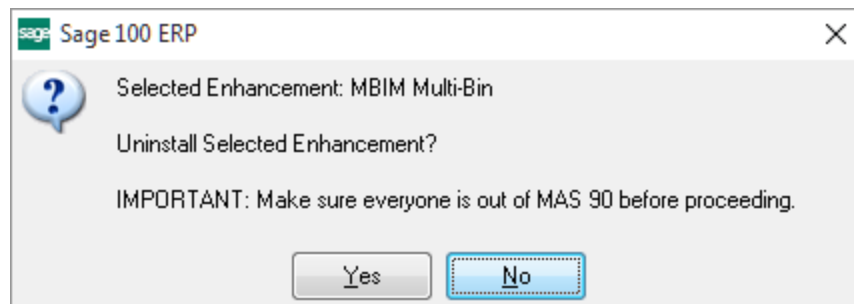
If the user has set up corresponding S/O Invoice Detail UDFs for Delivery Code Price and Markup Percentage then S/O Invoices which do not reference Sales Order Numbers will contain this same functionality.

Section E: Uninstall DSD Enhancements

A DSD Enhancements Uninstall Utility has been provided for the purposes of removing DSD Enhancements from your Sage 100 System. This utility may be accessed from the **DSD Enhancement Control Panel** menu option on the **Library Master / Utilities** menu.

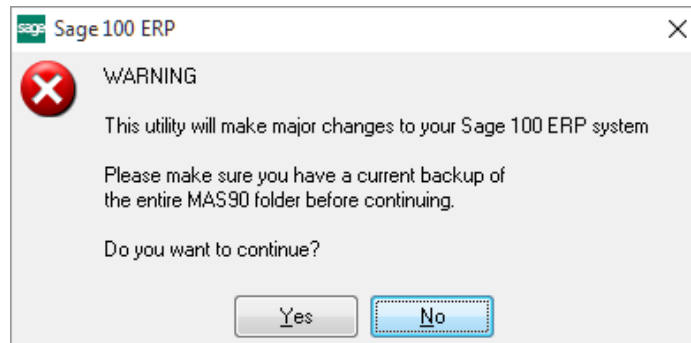


When accessing the **DSD Enhancement Control**, select the enhancement that you wish to Uninstall, and then select the **Uninstall Enhancement** button. The following message box will appear:



Select **No** to exit the Uninstall Process.
Select **Yes** to continue with the Uninstall Process.

The following message box will appear, to remind you that a complete backup of your entire Sage 100 system should be completed prior to uninstalling a DSD product.



Select **No** to exit the Uninstall Process.

Select **Yes** to continue with the Uninstall Process.

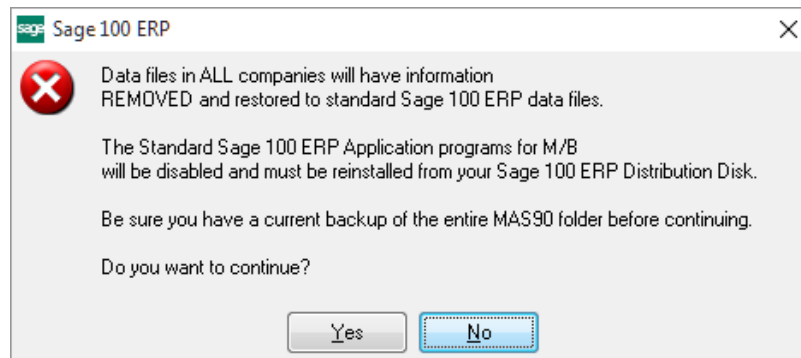
After the Uninstall of the DSD Enhancement, you MUST reinstall certain standard Sage 100 modules, followed by reinstallation of Product Updates and Hot Fixes, if applicable.

A message box will appear, and will display which of those specific Sage 100 modules you must reinstall afterwards.

Select **No** to exit the Uninstall Process.

Select **Yes** to continue with the Uninstall Process.

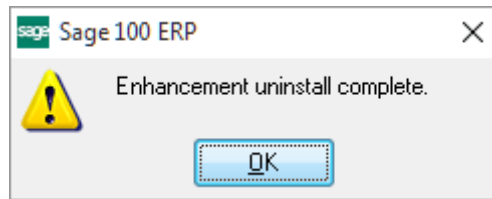
The following message box will appear, displaying the final warning message.



Select **No** to exit the Uninstall Process.

Select **Yes** to continue with the Uninstall Process. At this point, the DSD Enhancement will be removed from the Sage 100 system.

After completion of the Uninstall, the following message box will appear. Select OK to continue.



Now that the Uninstall process is completed, you must:

- Reinstall the applicable standard Sage 100 modules
- Reinstall the latest Sage 100 Service Pack/Updates, if applicable.
- Reinstall any other DSD Enhancements or Developer products that are affected from the reinstallation of the standard Sage 100 module(s).