



DSD Business Systems

Sage 100 Enhancements

GLMC

General Ledger Multi-Currency

Version 6.20



Information in this document is subject to change without notice.

Copyright 1993-2020, DSD Business Systems All rights reserved.

General Ledger Multi-Currency User's Manual
Version 6.20

17 May, 2020

DSD Business Systems
8787 Complex Drive
Suite 400
San Diego, CA 92123
858/550-5900 8:00am to 5:00pm PST
858/550-4900 Fax

Trademarks

ProvideX[®] is a Trademark of Sage Software.

Windows is a trademark of Microsoft Corporation.

Sage 100[®] is a registered trademark of Sage Software.

PXPlus[®] is a registered trademark of PVX Plus technologies

All other product names and brand names are service marks, and/or trademarks or registered trademarks of their respective companies.

This documentation and the software described herein, is prepared and published under license. Sage Software has not tested or verified either the software or any representation in this documentation regarding the software. Sage Software does not make any warranty with respect to either this documentation or the software described herein, and specifically disclaims any warranty, express or implied, with respect hereto, including the warranties of fitness for a particular purpose and merchantability.

Table of Contents

SECTION A: INTRODUCTION	4
WEB RESOURCES	4
SUPPORT	4
HOW G/L MULTI-CURRENCY WORKS	6
GENERAL LEDGER MULTI-CURRENCY FEATURES	6
REPORTS	7
SECTION B: GETTING STARTED	8
REQUIRED LEVELS	8
INSTALLATION	8
DSD ENHANCEMENT CONTROL PANEL	10
SECTION C: SETUP	13
GLMC MULTI-CURRENCY SET-UP	13
Set-up Procedure Overview	13
Order in Which to Convert Data and Set-up Multi-Currency Modules	13
Avoid a Support Call	14
Data Requirements	14
ACCOUNT GROUP MAINTENANCE	15
MAIN ACCOUNT MAINTENANCE	15
ACCOUNT MAINTENANCE	16
SECTION D: SYSTEM OPERATIONS	18
DATA ENTRIES	18
GENERAL JOURNAL, ALLOCATING JOURNAL, RECURRING JOURNAL, AND TRANSACTION JOURNAL	18
SECTION E: REPORTS	19
SECTION F: WHAT'S NEW?	20
VERSION 4.00 – 4.05	20
VERSION 4.10	20
VERSION 4.20 THROUGH 5.40	20
VERSION 6.00 THROUGH 6.20	20
SECTION G: UNINSTALL DSD ENHANCEMENTS	21

Section A: Introduction

This manual contains a description and instructions for this DSD product. Operating instructions are included for the features added by this product to Sage 100. For instructions on using Sage 100, refer to the appropriate Sage 100 manual, or call your Sage 100 reseller. DSD Business Systems offers excellent Sage 100 support, at an hourly rate.

Web Resources

DSD web site: <http://www.dsdinc.com>

The Enhancement page contains:

- Current Release Schedule*
- Purchasing Information*
- Installation Instructions*
- Product Support*
- Enhancement Links*

GLMC General Ledger Multi-Currency:

<http://www.dsdinc.com/enhancement/multi-currency-general-ledger-4/>

The product web page contains:

- Product Description*
- Web Links*
- Current Product Version Table*
- Product Installation File Download*
- Product Manual in .pdf Format*
- Revision History*
- FAQ*

Support

DSD provides product support through Sage 100 resellers. Support is provided for the current version. Older versions are supported at an hourly rate. DSD's telephone number is **858-550-5900**. Fax: **858-550-4900**.

For a hard error, where the program displays an error dialog, report:

- Error number.*
- Program name.*
- Line number.*
- Program version.*
- Exact sequence that caused the error, including menus and menu selections.*

Other pertinent information.

If leaving a message or faxing, please include:

Your name.

Your phone number (and fax if applicable) and extension.

It is possible to be unable to duplicate a problem, because of data corruption or because we have not exactly duplicated a particular operating environment. In such circumstances, we can only continue to try to fix the problem if we can either access the system with Symantec PCAnywhere or by some other means access or duplicate the system.

How G/L Multi-Currency Works

GLMC provides the following capabilities:

1. Multi-Currency Data Entry in General Journal Entry, Allocation Entry, Recurring Entry, and Transaction Journal Entry. The Journals print both Entry Currency amounts and Base Currency amounts.
2. General Ledger Reports may be printed in different Currencies. Financial reporting can be produced in Base Currency, FASB 52 Currency, or any other maintained Currency, using the Historical Exchange Rate or a Current one.
3. FASB 52 reporting for US-owned foreign companies is fully integrated.

General Ledger Multi-Currency Features

- **Base Currency: Please refer to the CUMC User Manual when setting up your Base Currency.** The Base Currency is the currency in which all General Ledger transactions will be maintained. The Base Currency is the "functional" or "local" currency of the Base economic environment in which the Company operates. You specify a Round-off For Reporting Account to use when printing financial reports in other currencies to collect recalculated values and create a balancing entry.
- **FASB 52 Foreign Currency Translation: Please refer to the CUMC User Manual when setting up your FASB 52 Currency.** You may define a Foreign Currency to be used when generating Foreign Translated Financial Statements conforming to FASB 52 requirements. You may change the FASB 52 Currency at any time and recalculate the FASB 52 amounts. You specify an Equity Adjustment from Translation Account to use when printing Financials in FASB 52 Currency to collect recalculated values and create a balancing entry.
- **FASB 52 Foreign Currency Translation Method:** You may specify the FASB 52 Translation (Historical Rate or Current Rate) in Account Group Maintenance, Main Account Maintenance, and Account Maintenance. Additionally, there is an **Update FASB 52 Translation** utility on the Multi-Currency Utilities Menu that allows update of this setting from Account Group to Main Account, and from Main Account to Account.
- **Multi-Currency Journal Entry:** You define a Currency Code and Exchange Rate when doing Journal Entries. The Journals will print in both Base Currency and Entry Currency.
- **Transactions Posted to the Bank Reconciliation module in Bank Currency:** Transactions posted from the Transaction Journal to Bank Reconciliation are posted in the Bank Currency for Reconciliation purposes **when BRMC is installed.**
- **Print Reports in Any Currency:** Print any report in Base, FASB 52 or Other Currency using As Posted or Current Amounts in an Override Rate.

Reports

GLMC modifies:

- Account Group Listing
- Allocation Journal
- Financial Statements
- Chart of Accounts
- G/L Detail Report
- G/L Detail by Source Report
- General Journal
- Main Account Listing
- Recurring Journal
- Transaction Journal
- Trial Balance

Section B: Getting Started

CAUTION

- **If you reinstall or upgrade one of the Sage 100 modules listed in the following table, you must also reinstall this Enhancement.**
- Enhancements from different Sage Developers are generally not designed to work together. If installed together, problems are likely to occur.
- **Check with DSD before installing more than one Enhancement.**

Required Levels

Sage 100 Module	Module Required	Required Level
G/L	Y	6.20
CUMC	Y	6.20

Installation

1. **Back-up:** Exit all Sage 100 sessions. Back-up existing Sage 100 data.
2. **Check Levels:** Sage 100 module levels **must match** those listed above.
3. **Run Enhancement Setup Program:** Save the executable installation program (sent to you or downloaded from our website) in a convenient location on the Sage 100 server. Launch the program from Windows Explorer or by selecting Start/Run, and then browse for the file in the location you saved it. Follow on-screen instructions.
4. **Send your Sage Serial Number to your DSD Representative:** Send your Sage Serial Number to your DSD representative in order for us to send you back the encrypted keys to unlock your system. This serial number can be found in Library Master\Setup\System Configuration, Tab 3. Registration as Serial Number.
5. **Re-Start Sage 100:** Sage 100 will be updated.
6. **Unlock the Enhancement:** DSD Enhancements must be unlocked to run. When any part of the Enhancement is run for the first time, the **DSD Enhancement License Agreement and Activation** window will appear. Follow the steps shown on that window. *You can click the Help button for more detailed instructions.*

Note: On the next page is a screenshot of the DSD Enhancement License Agreement and Activation window.

After accepting the License Agreement, you can then select the type of unlocking that you'd prefer. The choices are File, Web, Demo and Manual Entry.

File Unlock: After receiving your encrypted serial number key file from DSD, and placing that file in the MAS90/SOA directory, selecting this option will unlock all products keys contained in the file. This means you can unlock all enhancements at once using this option.

Web Unlock: If the system that is running the DSD Enhancement *has web access* and you *have sent DSD your Sage Serial number*, you can unlock the Enhancement without assistance using Web Unlock. When this option is selected, the program will attempt to download encrypted serial number key file from DSD *and then proceed to unlock all enhancements contained in the file.*

- The Sage 100 system that is being used must have web access for this option to be effective.
- You can send your Sage Serial Number to your DSD Enhancements sales representative.

Demo Unlock: If a Demo mode is available for the Enhancement you're running, you will be able to Demo unlock the product without assistance from DSD for demo purposes.

- Creating a Demo Unlock is a good way to temporarily unlock DSD Enhancements off-hours, if you do not have web or email access. Later, you can unlock the product fully, during business hours.

Manual Entry Unlock: If you want to unlock a single enhancement using a single encrypted key, you can select this option and enter the 64 character key you receive from DSD by copy and paste.

Note: You can also unlock a DSD Enhancement through the [DSD Enhancement Control Panel](#) found on the Library Master Utilities Menu. Then, select the Enhancement with your mouse from the list of Enhancements and click the **Unlock Product** button on the right side of the window.

- Convert Data:** After unlocking, the DSD Conversion Wizard will appear. Follow on-screen instructions to complete data conversion. You can exit the conversion program without converting data. The Enhancement will not proceed, however, until data is converted. If you enter an enhanced program and data has not been converted, the conversion program will run again.

DSD Enhancement License Agreement and Activation

License Agreement

YOU MUST READ THIS AGREEMENT COMPLETELY AND AGREE BEFORE PROCEEDING. SCROLL THROUGH THIS AGREEMENT USING THE SLIDER CONTROL.

IMPORTANT: THIS SOFTWARE IS LICENSED BY DSD BUSINESS SYSTEMS, INC. TO CUSTOMERS FOR THEIR USE ONLY IN ACCORDANCE WITH THE TERMS SET FORTH IN THIS CUSTOMER LICENSE AGREEMENT. OPENING OR USING THIS PACKAGE CONSTITUTES ACCEPTANCE OF THESE TERMS. IF THE TERMS OF THIS LICENSE ARE NOT ACCEPTABLE, THE CUSTOMER MAY OBTAIN A FULL REFUND OF ANY MONEY PAID IF THIS UNUSED, UNOPENED PACKAGE IS RETURNED WITHIN TEN (10) DAYS TO THE DEALER FROM WHICH IT WAS ACQUIRED.

1 Agree to License Agreement
 Agree Disagree

2 Select Unlocking Type
 Web File
 Demo Manual Entry

3 Call DSD at 858-550-5900
 Have this information ready: End User Name: DSD Business Systems
 Serial Number: 0555188

4 Enter the following from DSD
 Activation Key:
 Click to Unlock:

Help Exit

DSD ABX 12/30/2016

DSD Enhancement Control Panel

Starting with version 3.61, all DSD Enhancement products include DSD's Enhancement Control Panel. The **DSD Enhancement Control Panel is accessed from the Library Master Utilities menu.**

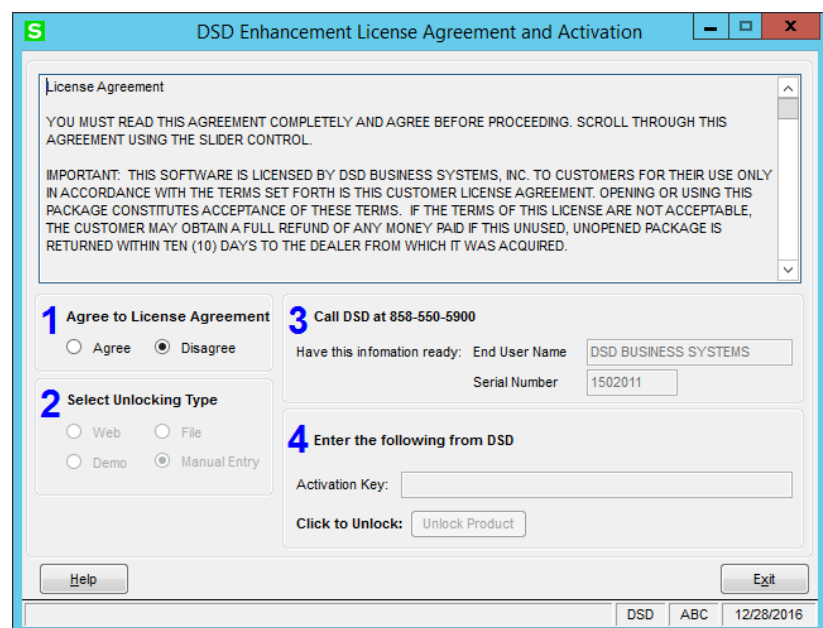
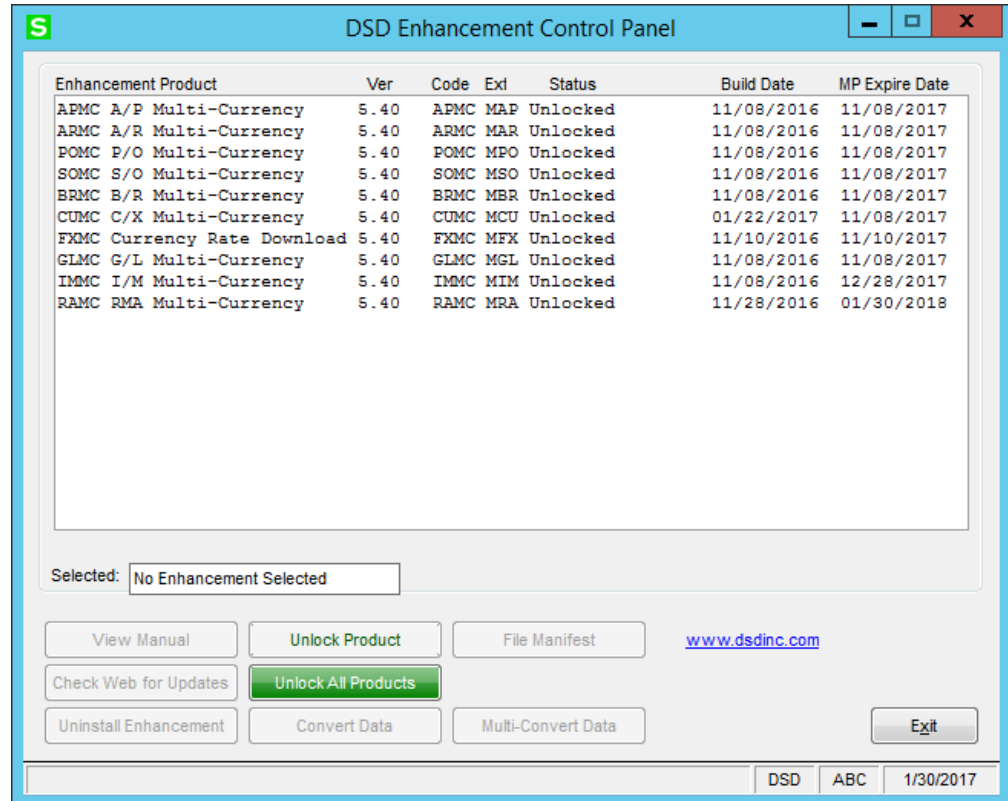
The DSD Enhancement Control Panel is a simple to use yet powerful system to help maintain DSD Enhancements installed on a Sage 100 system. To use it, select an Enhancement product from the list on the window and then click the button which corresponds with the desired task.

View Manual: This button will display the product manual for the selected Enhancement using Adobe Acrobat. For this to be possible, the PDF file for the corresponding manual must be in the "MAS90/PDF"

folder in the Sage 100 system. If the file is not present, and the system has web access, the correct PDF file will be automatically downloaded from the DSD website, put into the "MAS90/PDF" folder and then displayed.

Check the Web for Updates: This button will check the DSD website to see what the current build is the selected Enhancement and alert the user if a later version is available. *This requires an FTP web connection on the Sage 100 system.*

Unlock Product: This will cause the DSD Enhancement License Agreement and Activation window to appear. Using this window is described on the previous page..

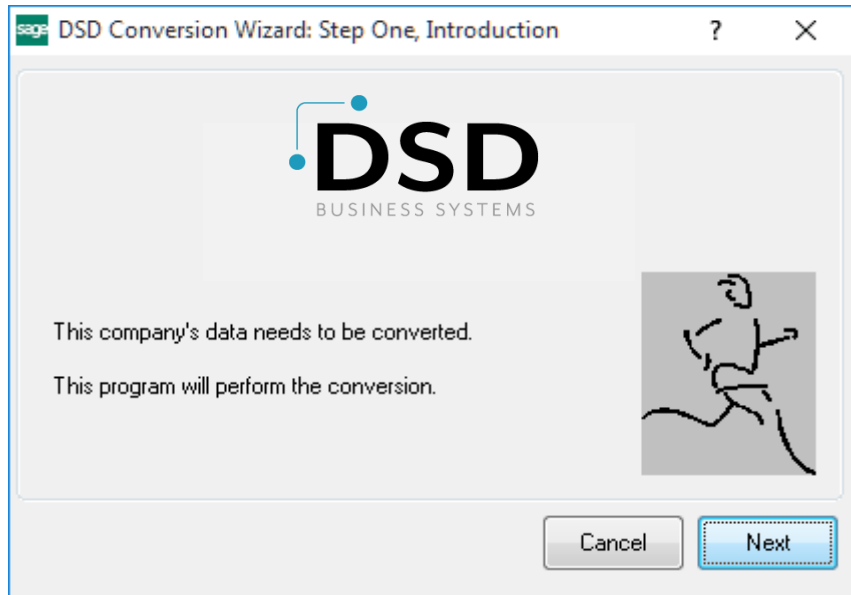


This button is disabled if the selected Enhancement is already unlocked.

Unlock All Products: This will cause the DSD Enhancement All License Agreement and Activation window to appear. This window is similar to the one described on the previous page, but has only web and file as options to unlock. *This button is never disabled.*

Convert Data: After unlocking, if Conversion has not been done, the Convert Data button can be pushed and the Enhancement data conversion program will run. Data conversion is *non-destructive*, and may be triggered any number of times. **However, this must be completed before any Multi-Currency processing is allowed in the respective module.**

Sometimes this is required to fix data records imported or updated from a non-enhancement installation. This conversion can also be triggered by launching a task in any Multi-Currency module that has not been previously converted. Conversions for more than one company at a time can be done using Multi-Convert Data below.



Multi-Convert Data: Multiple Companies can be converted at the same time for a given Enhancement. If a Base Currency Code has not been assigned, it must be entered here before the Conversion is allowed. *(If you have a large number of Companies to convert, please do in batches of 20 or fewer due to memory limitations.)*

	Company	Company Name	Activated	Converted	Base Currency	Convert
1	AB1	ABC Multi-Currency CAD 5.20P3	<input checked="" type="checkbox"/>	<input checked="" type="checkbox"/>	CAD	<input type="checkbox"/>
2	AB2	ABC Multi-Currency Consolidation 5.20P3	<input checked="" type="checkbox"/>	<input checked="" type="checkbox"/>	USD	<input type="checkbox"/>
3	ABC	ABC Multi-Currency USD 5.20P3	<input checked="" type="checkbox"/>	<input checked="" type="checkbox"/>	USD	<input type="checkbox"/>
4	ABX	American Business Expressions	<input checked="" type="checkbox"/>	<input checked="" type="checkbox"/>	USD	<input type="checkbox"/>
5	EEC	Edwardson Electric Company	<input checked="" type="checkbox"/>	<input type="checkbox"/>		<input type="checkbox"/>
6	MFG	MFG Computer Systems, Inc	<input checked="" type="checkbox"/>	<input type="checkbox"/>		<input type="checkbox"/>
7	XYZ	XYZ Manufacturing Company	<input checked="" type="checkbox"/>	<input type="checkbox"/>		<input type="checkbox"/>

Help: The Help button, located at the bottom right of the window, opens an HTML help file .

Get Adobe Acrobat: Opens the Adobe Acrobat website to the page where Acrobat can be downloaded and installed.

Uninstall Enhancement If this option is available, then selecting this button will start the un-install process, removing the enhancement from the system. (for more information [see Uninstall DSD Enhancements](#))

There is also a link to the DSD website.

Section C: Setup

GLMC Multi-Currency Set-up

Set-up Procedure Overview

Set-up CUMC Multi-Currency before any other modules. This must be done first. Then set-up all installed Multi-Currency modules, before performing transactions in any modules.

1. Install General Ledger Multi-Currency, as described, above. It is Ok to install all of the DSD Multi-Currency modules at once, in any order. Usually it's best to install the CUMC module last.
2. In the Multi-Currency Main Menu, select Multi-Currency Options. If you are running this the first time it will take you to the Company Maintenance screen to Activate the C/X module first. You will then have to select the Options again. There is a check box for "Enable Multi-Currency", which implies that you can choose only certain Companies to enable Multi-Currency. But no, **every active Company must have Multi-Currency set up.**
3. You **MUST define a Base Currency** on the Main tab before continuing with any other module conversions. You may set up FASB 52 and accounts here if GLMC is to be used in a FASB52-required company. Be certain that the Round Off For Reporting and FASB52 Equity accounts are not posted to from anywhere else. Refer to the CUMC User Manual for information on the CUMC setup.
4. If required, set-up FASB 52 and accounts. Be certain that FASB52 Equity account is not used anywhere else. The conversion program will run after this setup
5. Set-up any other currencies in CUMC, Currency Code Maintenance.
6. In G/L Setup, run G/L options, which will run the conversion program for GLMC. Or use the DSD Enhancement Control Panel to do the conversion. See the CUMC manual for details.

Order in Which to Convert Data and Set-up Multi-Currency Modules

General Ledger Multi-Currency must be set-up and converted first as other conversions rely on GLMC data during conversion and set-up. Note that the modules are converted/set-up in the same order that they appear on the Modules menu in the Sage 100 Launcher program..

1. General Ledger Multi-Currency (GLMC)
2. Accounts Receivable Multi-Currency (ARMC)
3. Accounts Payable Multi-Currency (APMC)
4. Inventory Management Multi-Currency (IMMC)
5. Sales Order Multi-Currency (SOMC)
6. RMA Multi-Currency (RAMC)
7. Purchase Order Multi-Currency (POMC)

8. Bank Reconciliation Multi-Currency (BRMC)

Avoid a Support Call

Keep these notes in mind while installing and setting-up Multi-Currency.

1. Once the Base Currency is set-up, it *cannot* be changed.
2. It is best to set-up/convert the various Multi-Currency modules in the proscribed order below. **However, CUMC must be first in order to define the Base Currency.**
3. Do not invert exchange rates. See **Exchange Rates in the CUMC Manual** for details and examples.
4. Make sure that **Round-off for Reporting or FASB52 Equity** accounts are not used elsewhere.
5. Set-up each Multi-Currency module installed on the system before performing any transactions in any module.

Data Requirements

Before beginning the Multi-Currency Startup process, you should have the following information available:

- List of Currencies used including the Base Currency and all foreign currencies in which the company processes transactions.
- Round-off and Round-off For Reporting Account numbers to be used in General Ledger postings and reports.

Additionally, if you will be using the **FASB 52** reporting capabilities of this module, you will need this information before starting:

- FASB 52 Reporting Currency.
- Equity Adjustment from Translation Account number to be used when printing FASB 52 Translated Financial Statements.
- FASB 52 Translation Type (Historical or Current) to be used for each Account Break.
- FASB 52 Beginning Balance for each account in the FASB 52 Reporting Currency.

A **Currency Button** appears in all Multi-Currency related screens. Select this button to access the new Multi-Currency fields.

Account Group Maintenance

If you checked the **FASB 52 Translation Required** check box in the Multi-Currency Options, the Account Group Maintenance list box will have a new column enabled: **FASB 52 Translation**.

	Account Group	Description	Category	Account Type	Cash Flow Type	FASB 52 Transla
1	000	CURRENT ASSETS	Assets	Cash	None	Historical
2	150	PROPERTY, PLANT AND EQUIPMENT	Assets	Cash	None	Historical
3	180	OTHER ASSETS	Assets	Cash	None	Current
4	200	CURRENT LIABILITIES	Liabilities	Current Liability	None	Current
5	275	LONG TERM DEBT	Liabilities	Current Liability	None	Current
6	300	EQUITY	Equity	Stockholder Equity	None	Historical
7	400	REVENUES	Revenue	Net Sales	None	Historical
8	450	COST OF SALES	Cost of Sales	Cost Of Sales	None	Historical
9	500	OPERATING EXPENSES - CENTRAL	Expenses	Operating Expense	None	Historical
10	600	OPERATING EXPENSES	Expenses	Operating Expense	None	Historical
11	700	GENERAL & ADMINISTRATIVE	Expenses	Operating Expense	None	Historical
12	950	OTHER INCOME & EXPENSE	Other Income & Expense	Other Inc. & Exp.	None	Historical
13	990	PROVISION FOR INCOME TAXES	Income Tax	Income Tax	None	Historical

Select the cell to change and utilize the drop box to maintain each Group setting.

Read the CUMC manual to know the difference between Current and Historical.

The Account Group Listing has been enhanced to print this new setting.

Main Account Maintenance

If you checked the **FASB 52 Translation Required** check box in the Multi-Currency Options, the Main Account Maintenance Screen prompt will include a new **Currency Button**.

The **FASB 52 Translation** setting to be used by each Main Account can be maintained. When an individual Main Account is created this field will default to the value entered in its corresponding Account Group. The user may later modify the field in a specific G/L Account through the Account Maintenance option in the G/L Main menu.

Multi-Currency Settings

FASB 52 Translation: Historical

OK

Select this button to access the following Multi-Currency Settings panel:

FASB 52 Translation: Select **Historical** to use the Historical Rate method when performing FASB 52 - Foreign Currency Translations for this Main Account or **Current** to use the Current Rate method.

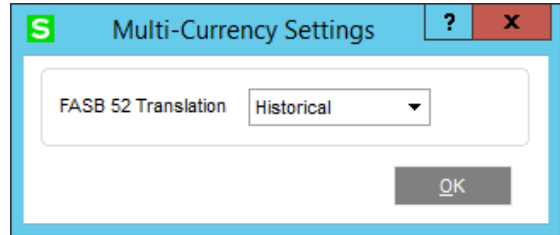
NOTE: See the Multi-Currency Utility "Update FASB 52 Translation" in the CUMC Manual.

Account Maintenance

If you checked the **FASB 52 Translation Required** check box in the Multi-Currency Options, the Account Maintenance Screen prompt will include a new **Currency Button**.

The **FASB 52 Translation** to be used by each Account can be maintained. When an individual Account Number is created this field will default to the value entered in its corresponding Main Account.

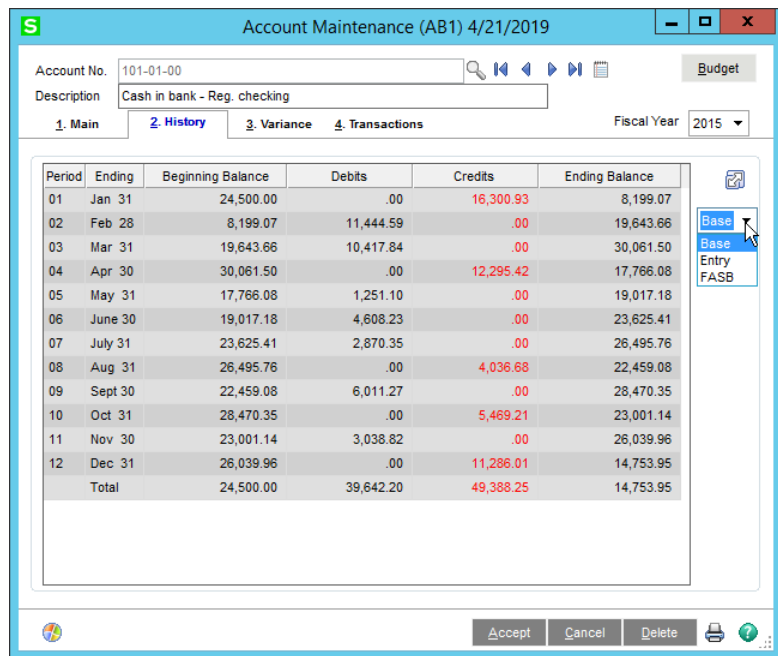
Select this button to access the following Multi-Currency Settings panel:



FASB 52 Translation: Select **Historical** to use the Historical Rate method when performing FASB 52 - Foreign Currency Translations for this Account or **Current** to use the Current Rate method.

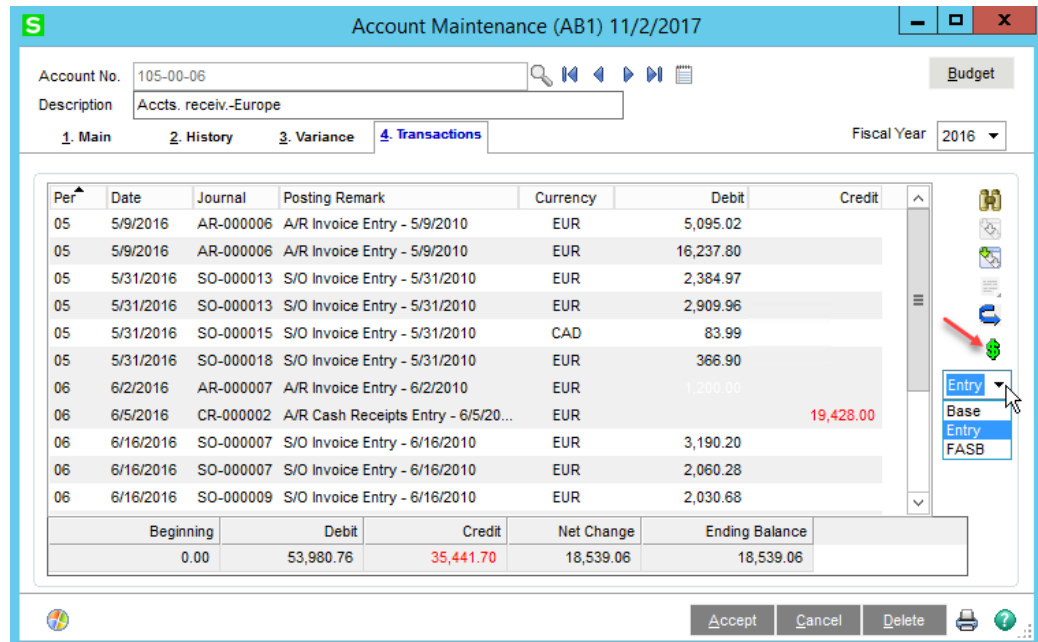
NOTE: See the Multi-Currency Utility “Update FASB 52 Translation” in the CUMC Manual.

In the History tab, a toggle is available to switch the amounts from Base to Entry (and to FASB52, if setup).

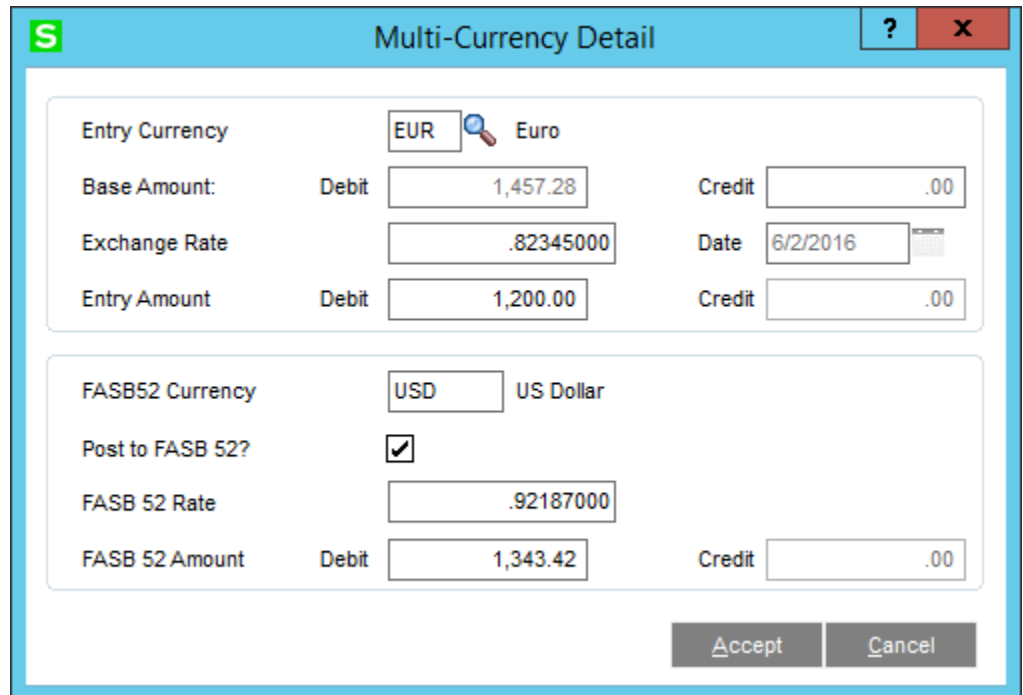


In the Transactions tab, a toggle is available to switch the amounts from Base to Entry (and to FASB52, if setup).

Also available is a green dollar sign icon to click to display the information held in a Transaction. Highlight the Transaction and press the button.



All the information contained in each transaction is displayed here.



Section D: System Operations

Data Entries

The Journal Entry Header Panel has a **Currency Button** in General Journal, Allocating Journal, Recurring Journal, and Transaction Journal. Select this button to access the **Multi-Currency Settings** screen.

Entry Currency: Enter the Entry Currency Code for the Journal entry. Select the Lookup Button to list all Currency Codes on file.

NOTE: *If amounts have already been entered, and the currency is changed, the entry amounts remain the same and will be considered to be in the new currency.*

Exchange Rate: Enter the Exchange Rate for the Journal entry. The rate will default to the Exchange Rate found in Currency Code Maintenance for the Posting Date. If the default Exchange Rate is overridden, then the Entry Amounts in the Lines Panel remain the same and will be converted to Base Currency when posting to General Ledger using the Exchange Rate entered.

Do Not Post to Base Currency: Select this check box to create a Journal Entry that has zero value in the Base Currency, but can post in the Entry Currency and FASB 52 Currency. *This is a special use feature, please refer to the Appendix.*

Post to FASB 52 File: Select this check box to post the journal transactions to the FASB 52 accounts. This field will only be enabled if you checked the **FASB 52 Translation Required** check box option in the Multi-Currency Options.

FASB 52 Rate: If you selected the **Post to FASB 52 File** check box, you have the option of overriding the FASB 52 Rate. The default will be the rate found in Currency Code Maintenance for the FASB 52 Currency for the Posting Date.

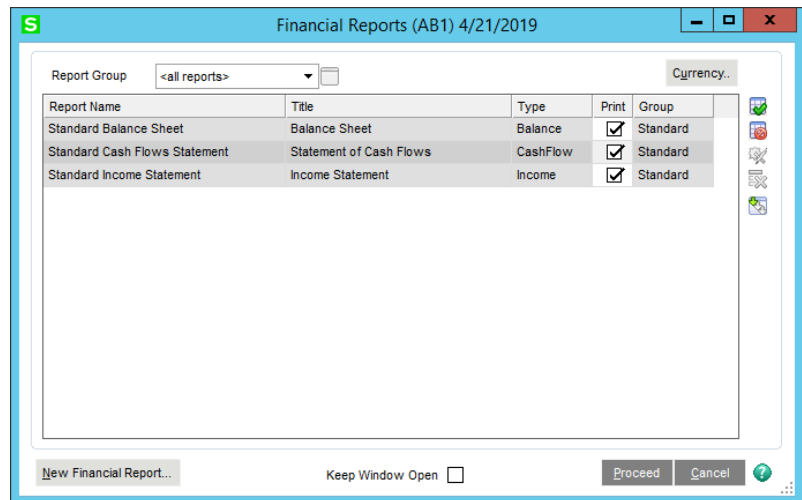
Transaction Journal Bank Codes: If a Transaction Journal includes Bank Codes, and BRMC is installed, the Bank Account posted Amounts will be in the Entry Currency. Be sure the Bank Currency is the same as the Entry Currency.

General Journal, Allocating Journal, Recurring Journal, and Transaction Journal

The Journals have been modified to print both Entry Currency and Base Currency information. The Currency Code and Exchange Rate are also printed on the Journal.

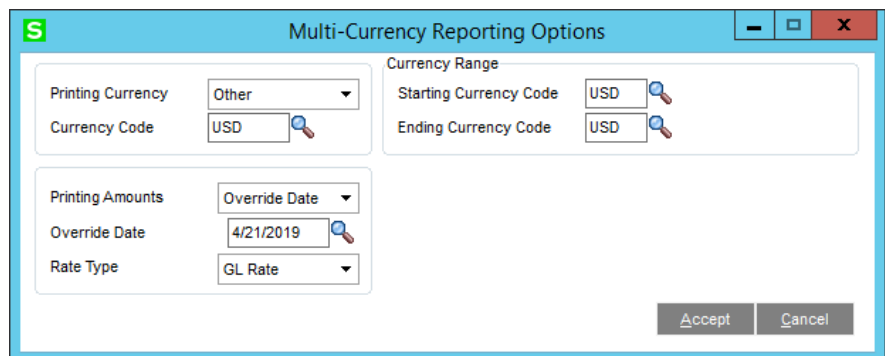
Section E: Reports

When printing General Ledger Reports, the Base Currency is the default. However, you may select another Currency and even the Exchange Rate to use. A **Currency Button** has been added to the Report Panel, and when selected, the following screen will be displayed (This screen will vary slightly depending on the report being printed and the options entered):



Printing Currency: Select **Entry** for Entry Currency, **Base** for Base Currency, **FASB 52** for FASB 52 Currency, or **Other** for Other Currency. (**Other** Currency is a special use selection which recalculates G/L amounts. Be sure you inspect and understand the results produced using this.)

Currency Code: Enter the Currency Code in which to print all amounts. This field will be displayed only if you selected **Other** as the **Printing Currency** option.



Currency Range: Enter a range of Currencies for a specific group of transactions. Select the List Mode to list all Currencies on file. This field will be displayed only for reports that print amounts from individual transactions, such as the G/L Detail Report.

Printing Amounts: Select **As Posted** to import all amounts As Posted or **Override Date** to convert amounts using an Exchange Rate as of an Override Date. This field will be displayed only if you selected **Other** as the **Printing Currency**.

Override Date: Enter a date to calculate amounts converted to the Printing Currency using the Exchange Rate as of this date. This field will be displayed only if you selected **Override Date** as the **Printing Amounts**.

Rate Type: Select **GL Rate**, **AR/SO Rate**, **AP/PO Rate**, or **FASB 52 Rate**. This field will be displayed only if you selected **Override Date** as the **Printing Amounts**.

Round-off Account: This field will default to the account specified in the Currency Options Screen in General Ledger Options. Since currency conversion from one currency to another often requires rounding. This Round-off Account Number is for reporting purposes only, and does not result in a G/L posting of any kind.

Section F: What's new?

Version 4.00 – 4.05

1. In these versions of GLMC, the Currency Code Maintenance has been moved into it's own module: the CUMC Multi-Currency module.
2. GLMC is no longer a required module, and is only needed if:
 - a. You want to do General Journal Entry and Transaction Journal Entry in different currencies.
 - b. You want to print G/L Reports in Entry Currency, or Other currencies.
 - c. You need FASB 52 integration and need to print financials in FASB 52 Currency.
3. The G/L Multi-Company feature has been removed from this version, and will be added back at a later date.

Version 4.10

The GL Trial Balance and G/L Detail Report, condensed versions, have been updated with Multi-Currency capabilities.

Version 4.20 through 5.40

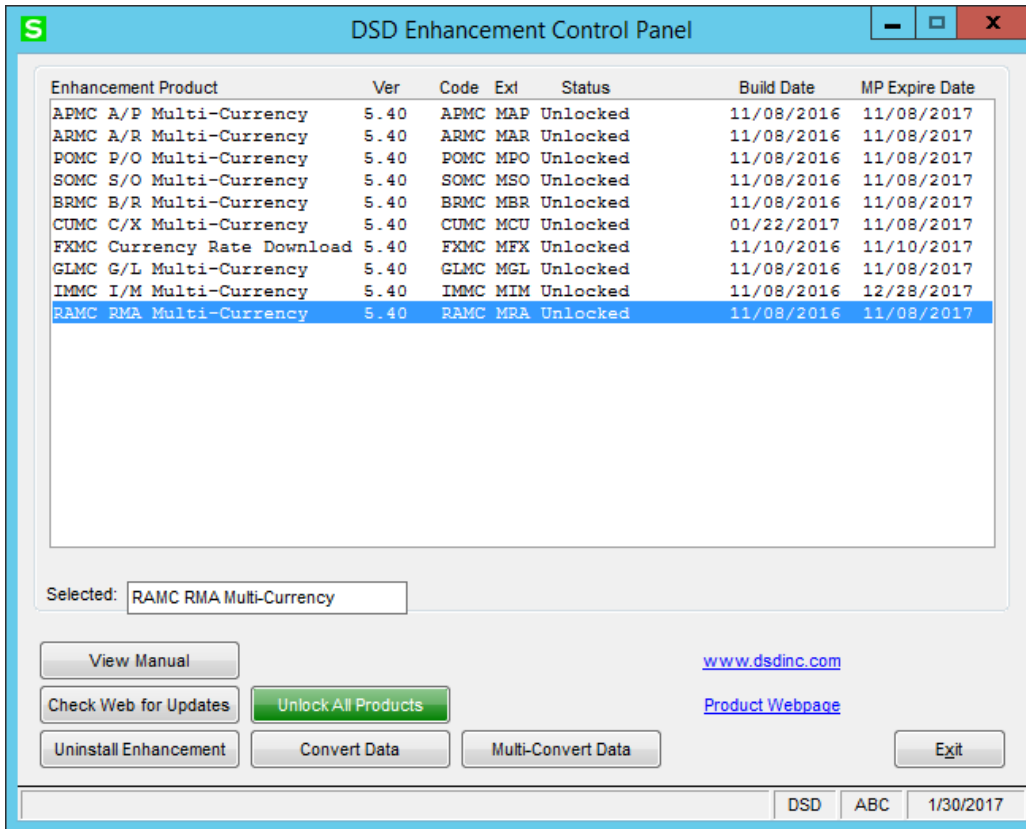
No new features have been added to this product.

Version 6.00 through 6.20

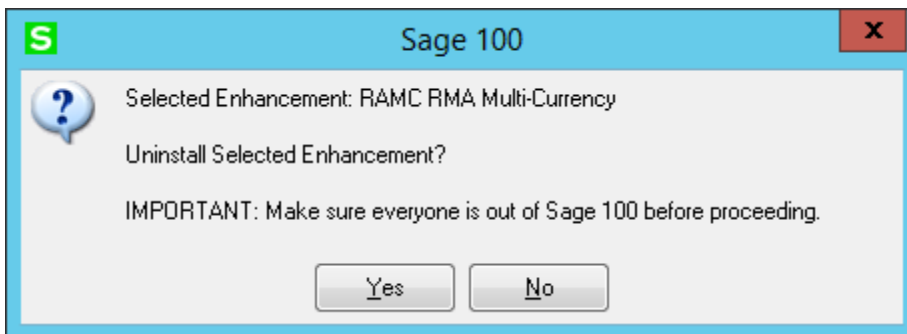
The Allocating and Recurring Journals have added the Currency Button to select a different Entry Currency.

Section G: Uninstall DSD Enhancements

A DSD Enhancements Uninstall Utility has been provided for the purposes of removing DSD Enhancements from your Sage 100 System. This utility may be accessed from the **DSD Enhancement Control Panel** menu option on the **Library Master / Utilities** menu.

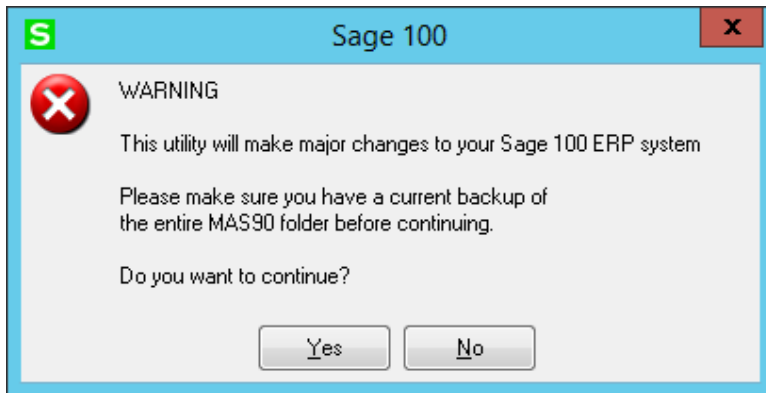


When accessing the **DSD Utility Suite**, select the enhancement that you wish to Uninstall, and then select the **Uninstall Enhancement** button. The following message box will appear:



Select **No** to exit the Uninstall Process.
 Select **Yes** to continue with the Uninstall Process.

The following message box will appear, to remind you that a complete backup of your entire MAS90 system should be completed prior to uninstalling a DSD product.



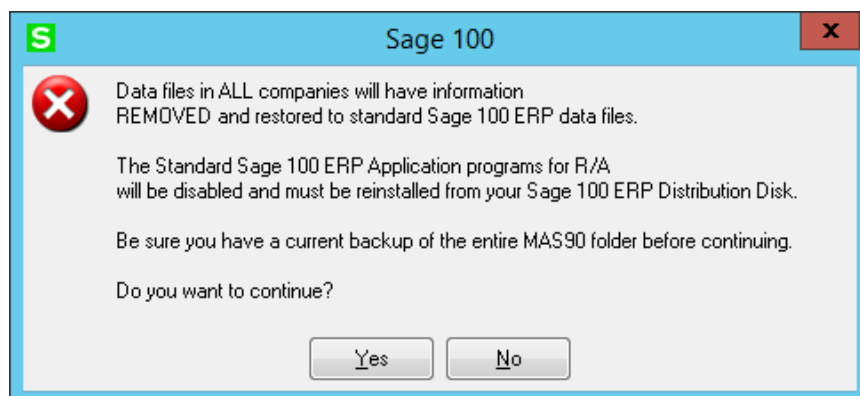
Select **No** to exit the Uninstall Process.
Select **Yes** to continue with the Uninstall Process.

After the Uninstall of the DSD Enhancement, you MUST reinstall certain standard Sage 100 modules, followed by reinstallation of Product Updates and Hot Fixes, if applicable.

A message box will appear, and will display which of those specific Sage 100 modules you must reinstall afterwards.

Select **No** to exit the Uninstall Process.
Select **Yes** to continue with the Uninstall Process.

The following message box will appear, displaying the final warning message.



Select **No** to exit the Uninstall Process.
Select **Yes** to continue with the Uninstall Process. At this point, the DSD Enhancement will be removed from the Sage 100 system.

After completion of the Uninstall, the following message box will appear. Select OK to continue.



Now that the Uninstall process is completed, you must:

- Reinstall the applicable standard Sage 100 modules
- Reinstall the latest Sage 100 Service Pack/Updates, if applicable.
- Reinstall any other DSD Enhancements or Developer products that are affected from the reinstallation of the standard Sage 100 module(s).