



DSD Business Systems

Sage 100 Enhancements

G061

Bank Rec Integration with General Journal

GL-1061

Version 7.20



Information in this document is subject to change without notice.

Copyright 1993-2023, DSD Business Systems All rights reserved.

Bank Rec Integration with General Journal User's Manual
Version 7.20

5 October, 2023

DSD Business Systems
8787 Complex Drive
Suite 400
San Diego, CA 92123
858/550-5900 8:00am to 5:00pm PST
858/550-4900 Fax

Trademarks

ProvideX® is a Trademark of Sage Software.

Windows is a trademark of Microsoft Corporation.

Sage 100® is a registered trademark of Sage Software.

PXPlus® is a registered trademark of PVX Plus technologies

All other product names and brand names are service marks, and/or trademarks or registered trademarks of their respective companies.

This documentation and the software described herein, is prepared and published under license. Sage Software has not tested or verified either the software or any representation in this documentation regarding the software. Sage Software does not make any warranty with respect to either this documentation or the software described herein, and specifically disclaims any warranty, express or implied, with respect hereto, including the warranties of fitness for a particular purpose and merchantability.

Table of Contents

SECTION A: INTRODUCTION 4

 WEB RESOURCES4

 SUPPORT.....4

 BANK REC INTEGRATION WITH GENERAL JOURNAL FEATURES.....5

SECTION B: GETTING STARTED 6

 REQUIRED LEVELS6

 INSTALLATION6

 DSD ENHANCEMENT CONTROL PANEL8

SECTION C: SETUP 10

SECTION D: SYSTEM OPERATIONS 11

 SOURCE JOURNAL MAINTENANCE 11

 RECURRING JOURNAL12

 RECURRING JOURNAL UPDATE 12

 GENERAL JOURNAL12

 GENERAL JOURNAL UPDATE 12

 ODBC DATA DICTIONARIES..... 13

SECTION E: UNINSTALL DSD ENHANCEMENTS 14

Section A: Introduction

This manual contains a description and instructions for this DSD product. Operating instructions are included for the features added by this product to Sage 100. For instructions on using Sage 100, refer to the appropriate Sage 100 manual, or call your Sage 100 reseller. DSD Business Systems offers excellent Sage 100 support, at an hourly rate.

Web Resources

DSD web site: <http://www.dsdinc.com>

The Enhancement page contains:

- Current Release Schedule*
- Purchasing Information*
- Installation Instructions*
- Product Support*
- Enhancement Links*

G061 Bank Rec Integration with General Journal:

<http://www.dsdinc.com/enhancement/bank-reconciliation-integration-2>

The product web page contains:

- Product Description*
- Web Links*
- Current Product Version Table*
- Product Installation File Download*
- Product Manual in .pdf Format*
- Revision History*
- FAQ*

Support

DSD provides product support through Sage 100 resellers. Support is provided for the current version. Older versions are supported at an hourly rate. DSD's telephone number is **858-550-5900**. Fax: **858-550-4900**.

For a hard error, where the program displays an error dialog, report:

- Error number.*
- Program name.*
- Line number.*
- Program version.*

*Exact sequence that caused the error, including menus and menu selections.
Other pertinent information.*

If leaving a message or faxing, please include:

Your name.

Your phone number (and fax if applicable) and extension.

It is possible to be unable to duplicate a problem, because of data corruption or because we have not exactly duplicated a particular operating environment. In such circumstances, we can only continue to try to fix the problem if we can either access the system with Symantec PCAnywhere or by some other means access or duplicate the system.

Bank Rec Integration with General Journal Features

This DSD Extended Solution allows you to associate Bank Codes with specific General Ledger Account Numbers by Source Journal. When that Source Journal is referenced in General Journal update, it will post each line's transaction amount to the Bank Code associated with that account as a 'Deposit' type Bank Reconciliation transaction.

- Additional functionality is available if GLMU: *Multiple Company General Ledger* is installed & enabled.

Section B: Getting Started



- **If you reinstall or upgrade one of the Sage 100 modules listed in the following table, you must also reinstall this Enhancement.**
- Enhancements from different Sage Developers are generally not designed to work together. If installed together, problems are likely to occur.
- **Check with DSD before installing more than one Enhancement.**

Required Levels

Sage 100 Module	Module Required	Required Level
G/L	Y	7.20

Installation

1. **Back-up:** Exit all Sage 100 sessions. Back-up existing Sage 100 data.
2. **Check Levels:** Sage 100 module levels **must match** those listed above.
3. **Run Enhancement Setup Program:** Save the executable installation program (sent to you or downloaded from our website) in a convenient location on the Sage 100 server. Launch the program from Windows Explorer or by selecting Start/Run, and then browse for the file in the location you saved it. Follow on-screen instructions.
4. **Send your Sage Serial Number to your DSD Representative:** Send your Sage Serial Number to your DSD representative in order for us to send you back the encrypted keys to unlock your system. This serial number can be found in Library Master\Setup\System Configuration, Tab 3. Registration as Serial Number.
5. **Re-Start Sage 100:** Sage 100 will be updated.
6. **Unlock the Enhancement:** DSD Enhancements must be unlocked to run. When any part of the Enhancement is run for the first time, the **DSD Enhancement License Agreement and Activation** window will appear. Follow the steps shown on that window. *You can click the Help button for more detailed instructions.*

Note: On the next page is a screenshot of the DSD Enhancement License Agreement and Activation window.

After accepting the License Agreement, you can then select the type of unlocking that you'd prefer. The choices are File, Web, Demo and Manual Entry.

File Unlock: After receiving your encrypted serial number key file from DSD, and placing that file in the MAS90/SOA directory, selecting this option will unlock all products keys contained in the file. This means you can unlock all enhancements at once using this option.

Web Unlock: If the system that is running the DSD Enhancement *has web access* and you *have sent DSD your Sage Serial number*, you can unlock the Enhancement without assistance using Web Unlock. When this option is selected, the program will attempt to download encrypted serial number key file from DSD and then proceed to unlock all enhancements contained in the file.

- The Sage 100 system that is being used must have web access for this option to be effective.
- You can send your Sage Serial Number to your DSD Enhancements sales representative.

Demo Unlock: If a Demo mode is available for the Enhancement you're running, you will be able to Demo unlock the product without assistance from DSD for demo purposes.

- Creating a Demo Unlock is a good way to temporarily unlock DSD Enhancements off-hours, if you do not have web or email access. Later, you can unlock the product fully, during business hours.

Manual Entry Unlock: If you want to unlock a single enhancement using a single encrypted key, you can select this option and enter the 64 character key you receive from DSD by copy and paste.

Note: You can also unlock a DSD Enhancement through the **DSD Enhancement Control Panel** found on the Library Master Utilities Menu. Then, select the Enhancement with your mouse from the list of Enhancements and click the **Unlock Product** button on the right side of the window.

- Convert Data:** After unlocking, the DSD Conversion Wizard will appear. Follow on-screen instructions to complete data conversion. You can exit the conversion program without converting data. The Enhancement will not proceed, however, until data is converted. If you enter an enhanced program and data has not been converted, the conversion program will run again.

DSD Enhancement Control Panel

Starting with version 3.61, all DSD Enhancement products include DSD's Enhancement Control Panel. The **DSD Enhancement Control Panel is accessed from the Library Master Utilities menu.**

The DSD Enhancement Control Panel is a simple to use yet powerful system to help maintain DSD Enhancements installed on a Sage 100 system. To use it, select an Enhancement product from the list on the window and then click the button, on the right side of the window, which corresponds with the desired task.

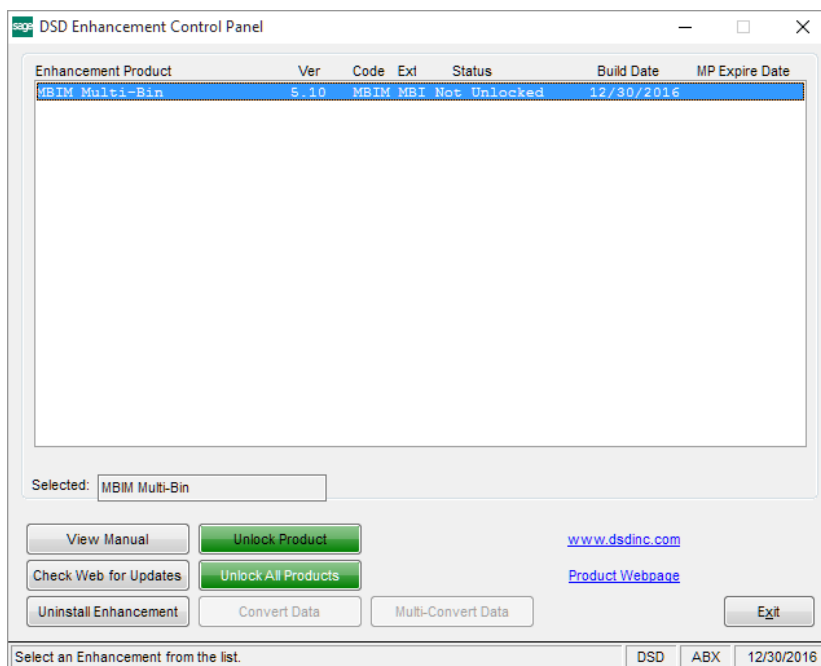
View Manual: This button will display the product manual for the selected Enhancement using Adobe Acrobat. For this to be possible, the PDF file for the corresponding manual must be in the "MAS90/PDF" folder in the Sage 100 system. If the file is not present, and the system has web access, the correct PDF file will be automatically downloaded from the DSD website, put into the "MAS90/PDF" folder and then displayed.

Check the Web for Updates: This button will check the DSD website to see what the current build is the selected Enhancement and alert the user if a later version is available. *This requires an internet connection on the Sage 100 system.*

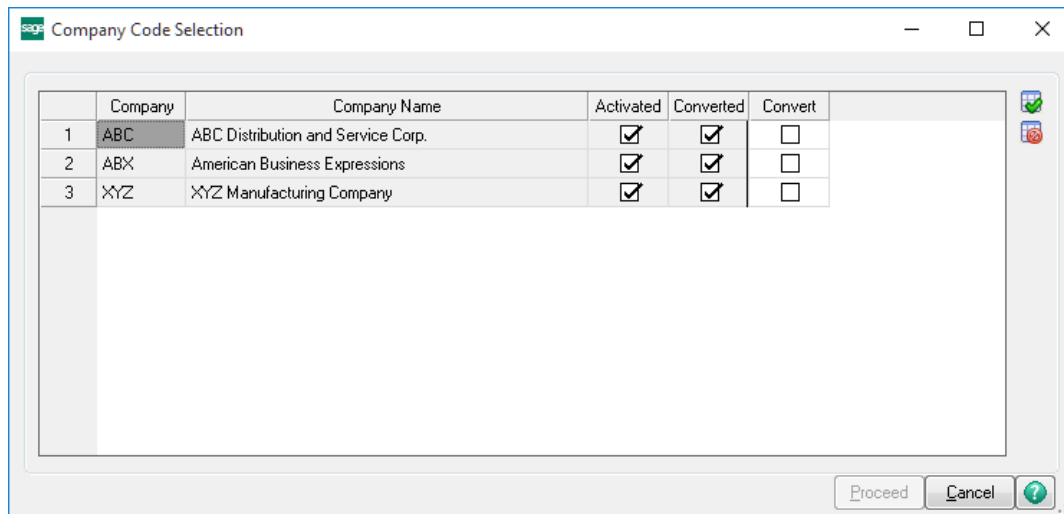
Unlock Product: This will cause the DSD Enhancement License Agreement and Activation window to appear. Using this window is described on the previous page. *This button is disabled if the selected Enhancement is already unlocked or if unlocking is not required.*

Unlock All Products: This will cause the DSD Enhancement All License Agreement and Activation window to appear. This window is similar to the one described on the previous page, but has only web and file as options to unlock. *This button is never disabled.*

Convert Data: After verification, the selected Enhancement's data conversion program will run. Data conversion is non-destructive, and may be triggered any number of times. Sometimes this is required to fix data records imported or updated from a non-enhancement installation.



Multi-Convert Data: Multiple Companies can be converted at the same time for a given Enhancement. *(If you have a large number of Companies to convert, please do in batches of 20 or fewer due to memory limitations.)*



Help: The Help button, located at the bottom right of the window, opens an HTML help file.

Get Adobe Acrobat: Opens the Adobe Acrobat website to the page where Acrobat can be downloaded and installed.

Uninstall Enhancement If this option is available, then selecting this button will start the un-install process, removing the enhancement from the system. (for more information see [Uninstall DSD Enhancements](#))

Section C: Setup

Upon completion of software installation, you will need to access the DSD Extended Solutions Setup from the General ledger Setup menu. Select this part number and the Setup screen for this Extended Solution will appear. Check the 'Enable DSD Extended Solution' box to activate this Extended Solution.

The screenshot shows a window titled "GL-1061 Setup Options" with a close button (X) in the top right corner. Inside the window, the title "GL-1061 Bank Rec Integrate GL" is centered. Below the title, there is a section with the text "Enable DSD Extended Solution" followed by a checked checkbox and the text "Level 7.20". Below this section is a large empty rectangular box. At the bottom right of the window, there are two buttons: "Accept" and "Cancel". At the very bottom of the window, there is a status bar with three fields: "DSD", "ABC", and "9/12/2023".

You should visit this Setup screen after each upgrade or reinstallation of this Extended Solution.

Section D: System Operations

Source Journal Maintenance

Source Journal Maintenance has been modified with a 'Bank Code' button.

Source Journal Maintenance (ABC) 10/2/2023

Source Journal AP

DescriptionAccounts Payable Journal

Journal TypeFinancial

Next Journal000007

Next Register000017

Number	Trans Date	Amount	OB	Updated	By	From
000015	5/29/2025	14,500.00		11/4/2014	DSD	AP

Bank Code

Accept

Cancel

Delete

When this button is clicked, you will be presented with 'G/L Account Bank Code Setup'. Specify each G/L Account Number and the Bank Code where it should create a Bank Reconciliation transaction whenever this account number is referenced with this Source Journal.

G/L Account Bank Code Setup (ABC) 10/2/2023

Source Journal AP

	Account No.	Bank Code	Account Desc	Bank Desc
1	100-00-00	D	Cash on hand	Wells Fargo Checking
2				

Accept

Cancel

Recurring Journal

During Recurring Journal printing, if the source journal/account combination is found, the bank code will be written to the work file and it can be printed on the journal.

Recurring Journal Update

Recurring Journal update will post each line's transaction amount to the Bank Code associated with that account as a 'Deposit' type Bank Reconciliation transaction. The Recurring Journal's posting date will be used as the Bank Reconciliation Transaction Date and the Recurring Journal's posting comment will be used as the Bank Reconciliation transaction's comment.

If the Recurring Journal transaction has a debit amount, the deposit amount will be positive; if the Recurring Journal transaction has a credit amount, the deposit amount will be negative.

General Journal

During General Journal printing, if the source journal/account combination is found, the bank code will be written to the work file and it can be printed on the journal.

General Journal Update

General Journal update will post each line's transaction amount to the Bank Code associated with that account as a 'Deposit' type Bank Reconciliation transaction. The General Journal's posting date will be used as the Bank Reconciliation Transaction Date and the General Journal's posting comment will be used as the Bank Reconciliation transaction's comment.

If the general journal transaction has a debit amount, the deposit amount will be positive; if the general journal transaction has a credit amount, the deposit amount will be negative.


With GLMU

If GLMU: *Multiple Company General Ledger* is enabled, update will look to the subsidiary company's source journal/account/bank code setup to find the Bank Code to use and will create Bank Reconciliation transactions in that subsidiary company.

Note: The following GLMU Inter Company Maintenance options must be defined as follows:







“Post to the XXX company using the NNN source journal code”

“Post using the original source code number or issue a new one” = “Original”

 G/L Inter-company Account Maintenance (ABC) 10/2/2023

Company Code


ABX



Inter-company Offset Accounts

ABC Company G/L Offset Acct


111-00-00



Other Receivables

ABX Company G/L Offset Acct

11300-01-000-000-000



Other Receivables:Irvine-Main


Source Journal Information

☒ Post to the ABX company using the ABC source journal code


Post using the original source code number or issue a new one

Original

Financial source journal code




Non-financial source journal code



Accept

Cancel

Delete



ODBC Data Dictionaries

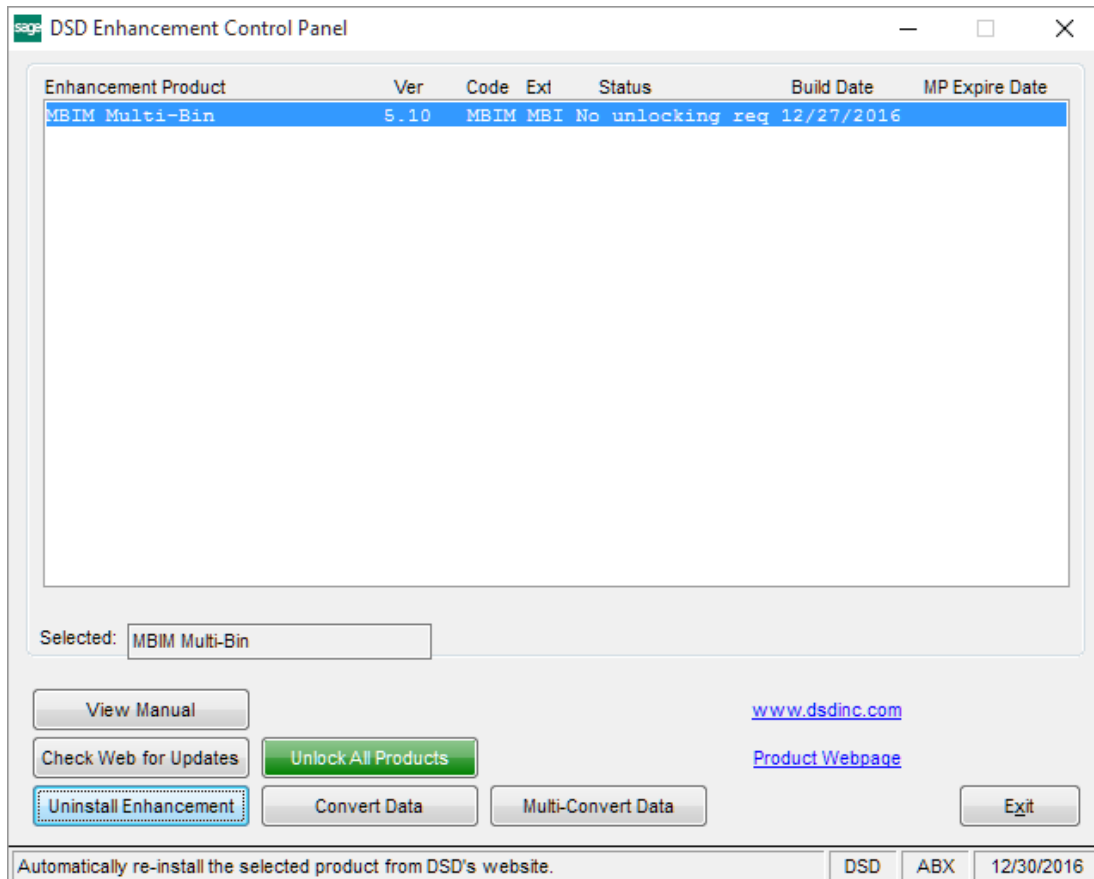
The files listed below have been added or changed in the Data Dictionary by this Extended Solution for Visual Integrator purposes.

File:	Description:	Field:
GL_SourceJournalBankCode_001.M4T		All Fields
GL_SourceJournalBankCdWrk_001.M4T		All Fields

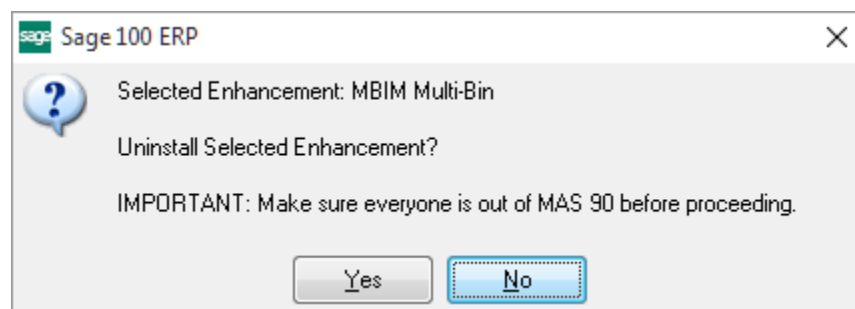
The Data Dictionary may contain other files and data fields that are not available without their corresponding Sage Software Extended Solutions installed.

Section E: Uninstall DSD Enhancements

A DSD Enhancements Uninstall Utility has been provided for the purposes of removing DSD Enhancements from your Sage 100 System. This utility may be accessed from the **DSD Enhancement Control Panel** menu option on the **Library Master / Utilities** menu.

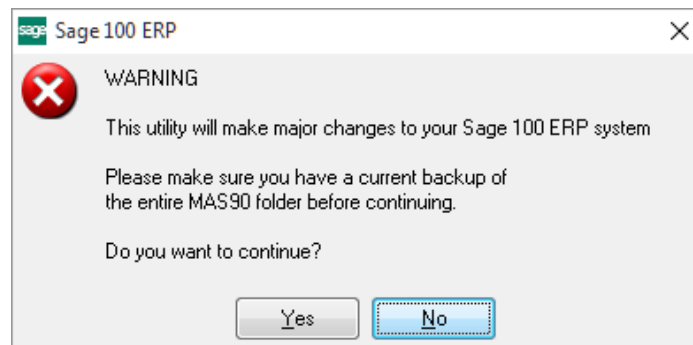


When accessing the **DSD Enhancement Control**, select the enhancement that you wish to Uninstall, and then select the **Uninstall Enhancement** button. The following message box will appear:



Select **No** to exit the Uninstall Process.
Select **Yes** to continue with the Uninstall Process.

The following message box will appear, to remind you that a complete backup of your entire Sage 100 system should be completed prior to uninstalling a DSD product.



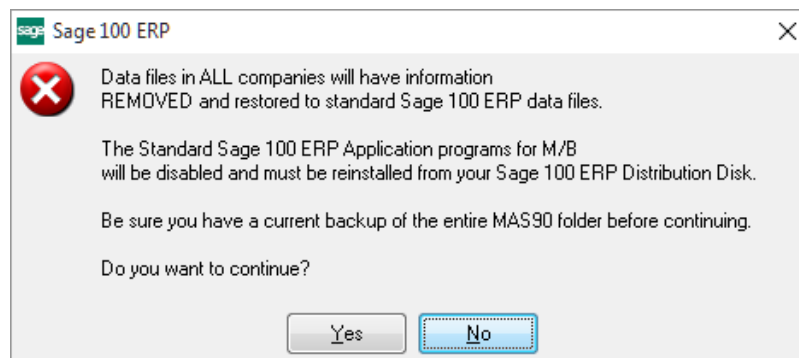
Select **No** to exit the Uninstall Process.
Select **Yes** to continue with the Uninstall Process.

After the Uninstall of the DSD Enhancement, you MUST reinstall certain standard Sage 100 modules, followed by reinstallation of Product Updates and Hot Fixes, if applicable.

A message box will appear, and will display which of those specific Sage 100 modules you must reinstall afterwards.

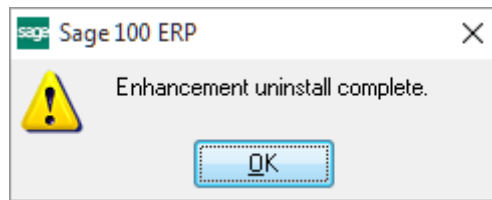
Select **No** to exit the Uninstall Process.
Select **Yes** to continue with the Uninstall Process.

The following message box will appear, displaying the final warning message.



Select **No** to exit the Uninstall Process.
Select **Yes** to continue with the Uninstall Process. At this point, the DSD Enhancement will be removed from the Sage 100 system.

After completion of the Uninstall, the following message box will appear. Select OK to continue.



Now that the Uninstall process is completed, you must:

- Reinstall the applicable standard Sage 100 modules
- Reinstall the latest Sage 100 Service Pack/Updates, if applicable.
- Reinstall any other DSD Enhancements or Developer products that are affected from the reinstallation of the standard Sage 100 module(s).