



DSD Business Systems

Sage 100 Enhancements

CUMC

Multi-Currency Base Module

Version 7.00



Information in this document is subject to change without notice.

Copyright 1993-2021, DSD Business Systems All rights reserved.

Multi-Currency User's Manual
Version 7.00

29 April, 2022

DSD Business Systems
8787 Complex Drive
Suite 400
San Diego, CA 92123

858/550-5900 8:00am to 5:00pm PST
858/550-4900 Fax

Trademarks

ProvideX® is a Trademark of Sage Software.

Windows is a trademark of Microsoft Corporation.

Sage 100® is a registered trademark of Sage Software.

PXPlus® is a registered trademark of PVX Plus technologies

All other product names and brand names are service marks, and/or trademarks or registered trademarks of their respective companies.

This documentation and the software described herein, is prepared and published under license. Sage Software has not tested or verified either the software or any representation in this documentation regarding the software. Sage Software does not make any warranty with respect to either this documentation or the software described herein, and specifically disclaims any warranty, express or implied, with respect hereto, including the warranties of fitness for a particular purpose and merchantability.

Table of Contents

SECTION A: INTRODUCTION	5
WEB RESOURCES	5
SUPPORT	5
HOW MULTI-CURRENCY WORKS	7
MULTI-CURRENCY FEATURES	7
REPORTS	7
SECTION B: GETTING STARTED	9
REQUIRED LEVELS	9
INSTALLATION	9
DSD ENHANCEMENT CONTROL PANEL	11
SECTION C: SETUP	14
CUMC MULTI-CURRENCY SET-UP	14
Set-up Procedure Overview	14
Order in Which to Convert Data and Set-up Multi-Currency Modules	14
Avoid a Support Call	15
Data Requirements	15
SECTION D: MULTI-CURRENCY MAIN MENU	16
MULTI-CURRENCY OPTIONS	16
CURRENCY CODE MAINTENANCE	18
EXCHANGE RATES	19
FOREIGN PRICE/COST MAINTENANCE	20
SECTION E: MULTI-CURRENCY REPORTS MENU	21
CURRENCY CODE LISTING	21
CURRENCY CODE AUDIT REPORT	21
FOREIGN PRICE/COST LISTING	22
FOREIGN ITEM PRICING INFORMATION	22
A/R UNREALIZED GAIN/LOSS REPORT	23
A/P UNREALIZED GAIN/LOSS REPORT	23
SECTION F: MULTI-CURRENCY UTILITIES MENU	24
RECALCULATE FASB 52	24
UPDATE FASB 52 TRANSLATION	26
MULTI-COMPANY CONSOLIDATION (TRANSLATION)	27
Setting Up the Consolidation Company	27
Company Code Entry	29
Entering General Ledger Accounts	29

Budgets vs. Actual	29
Transaction Date Range	30
Posting to Equity Adjustment Account during Consolidation	30
Performing the Consolidation Process Immediately	30
Delaying the Consolidation Process	31
Multi-Currency Consolidations (Translations)	31
Equity Adjustment Account	32
How does the Consolidation Utility work?	33
What General Ledger Reports may I run on the Consolidation Company?	35
What General Ledger Data is NOT included on a Consolidation?	36
Can I do normal data entry and processing in the Consolidation Company?	36
REBUILD A/R, A/P, AND S/O SALES HISTORY FILES	37
EXCHANGE RATE DOWNLOAD	38
REMOVE GLMC FINANCIAL REPORT LOCKS	39

SECTION G: WHAT'S NEW? 40

VERSION 4.00	40
VERSION 4.05 – 11/7/05	40
VERSION 4.10 – 1/2/07	40
VERSIONS 4.20 / 4.30 / 4.40 / 4.50/5.00 – 1/2/09	40
VERSIONS 4.50 / 5.00/5.10/5.20/5.30/6.00/7.00 – 12/1/16	40
VERSIONS 4.50 / 5.00/5.10/5.20/5.30/6.00/7.00 – 09/1/17	40

SECTION H: APPENDICES 41

CHANGING THE BASE CURRENCY CODE	41
SETTING DECIMAL PRECISION TO 8 DECIMAL PLACES ON VI IMPORTS	41
FXMC INSTALLATION	42
CONFIGURING THE WINDOWS TASK SCHEDULER	44
OTHER FXMC FEATURES	47

SECTION I: UNINSTALL DSD ENHANCEMENTS 51

Section A: Introduction

This manual contains a description and instructions for this DSD product. Operating instructions are included for the features added by this product to Sage 100. For instructions on using Sage 100, refer to the appropriate Sage 100 manual, or call your Sage 100 reseller. DSD Business Systems offers excellent Sage 100 support, at an hourly rate.

Web Resources

DSD web site: <http://www.dsdinc.com>

The Enhancement page contains:

- Current Release Schedule*
- Purchasing Information*
- Installation Instructions*
- Product Support*
- Enhancement Links*

CUMC Multi-Currency:

<http://www.dsdinc.com/enhancement/multi-currency-base-module-5/>

The product web page contains:

- Product Description*
- Web Links*
- Current Product Version Table*
- Product Installation File Download*
- Product Manual in .pdf Format*
- Revision History*
- FAQ*

Support

DSD provides product support through Sage 100 resellers. Support is provided for the current versions. Older versions are supported at an hourly rate. DSD's telephone number is **858-550-5900**. Fax: **858-550-4900**.

For a hard error, where the program displays an error dialog, report:

- Error number.*
- Program name.*
- Line number.*
- Program version.*
- Exact sequence that caused the error, including menus and menu selections.*

Other pertinent information.

If leaving a message or faxing, please include:

Your name.

Your phone number (and fax if applicable) and extension.

It is possible to be unable to duplicate a problem, because of data corruption or because we have not exactly duplicated a particular operating environment. In such circumstances, we can only continue to try to fix the problem if we can either access the system with Citrix GoToAssist or by some other means access or duplicate the system.

How Multi-Currency Works

CUMC provides the underpinning for all other currency modules. Here the setup for the company's Base Currency and any number of other Currencies for use by the other accounting modules is maintained. Exchange Rates can be entered or imported on a daily basis or less often if desired.

Multi-Currency Features

- **Base Currency:** The currency for any specific Company in which all General Ledger transactions will be posted. The Base Currency is the "functional" or "local" currency of the economic environment in which the Company operates, and can also be referred to as "Primary" or "System" Currency.
- **Foreign Currency Codes:** You may define an unlimited number of Foreign Currencies in which your company trades. Exchange Rates are always expressed in terms of 1.00 Base Currency unit. (At least one valid Exchange Rate should be entered with a date earlier than any posted transaction. See the Section on Exchange Rate Entry).
- **Currency Code:** Define a Currency Code (abbreviation) for each Currency to be displayed and printed. This is normally the international (ISO) standard 3-character Currency code.
- **Separate Exchange Rates per Module:** Define a different Exchange Rate if desired for Payables, Receivables, and G/L, and FASB52 Exchange Rates for each Currency to be used when converting amounts to Base Currency during processing for those modules.
- **Download Exchange Rates:** Download Exchange Rates manually from XE.com. The reference site is <http://www.xe.com/currencyconverter/> ([see comments here](#)). Rates can be downloaded for the current day for all Currency Codes defined. For automatic unattended Exchange Rate download, see [FXMC in Section I below](#).
- **If GLMC is installed:**
 - **FASB 52:** Enable any non-base currency to be used for the Financial Accounting Standards Board Section 52 for Foreign Exchange GL Reporting (see FASB52 in GLMC Appendix).
- **If IMMC is installed:**
 - **Foreign Price Maintenance:** Set up a different S/O Standard Price for the same Item for each Currency, and enable Price Breaks or Customer Pricing for this Item in this Currency.
 - **Foreign Cost Maintenance:** Set up a different P/O Standard Cost for the same Item for each Currency, and enable Cost Breaks or Vendor Cost for this Item in this Currency.
- **If SOMC or APMC is installed:**
 - **Rebuild Inventory History:** This utility is the IMFX enhancement from DSD, but modified for Multi-Currency. Here is the link for the module description: <http://www.dsdinc.com/enhancement/rebuild-inventory-history-utility-3/>

Reports

- **Currency Code Listing:** A listing of any or all Currency Codes defined and exchange rates assigned by date for each Code.

- **Currency Code Audit Report:** An audit report keeps track of any changes, deletion or additions to the Currency Code Masterfile.
- **If APMC is installed:**
 - **A/P Unrealized Gain or Loss Report:** You may generate an Unrealized Gain or Loss Report as of any date for any Entry Currency of Open Vendor Invoices.
- **If ARMC is installed:**
 - **A/R Unrealized Gain or Loss Report:** You may generate an Unrealized Gain or Loss Report as of any date for any Entry Currency of Open Customer Invoices.
- **If IMMC is installed:**
 - **Foreign Price Cost Listing**
 - **Foreign Item Pricing Information**

Section B: Getting Started

CAUTION

- If you reinstall or upgrade one of the Sage 100 modules listed in the following table, you must also reinstall this Enhancement.
- Enhancements from different Sage Developers are generally not designed to work together. If installed together, problems are likely to occur..
- Check with DSD before installing more than one Enhancement.

Required Levels

Sage 100 Module	Module Required	Required Level
C/X	Y	7.00

Installation

1. **Back-up:** Exit all Sage 100 sessions. Back-up existing Sage 100 data.
2. **Check Levels:** Sage 100 module levels **must match** those listed above.
3. **Run Enhancement Setup Program:** Save the executable installation program (sent to you or downloaded from our website) in a convenient location on the Sage 100 server. Launch the program from Windows Explorer or by selecting Start/Run, and then browse for the file in the location you saved it. Follow on-screen instructions.
4. **Send your Sage Serial Number to your DSD Representative:** Send your Sage Serial Number to your DSD representative in order for us to send you back the encrypted keys to unlock your system. This serial number can be found in Library Master\Setup\System Configuration, Tab 3. Registration as Serial Number.
5. **Re-Start Sage 100:** Sage 100 will be updated.
6. **Unlock the Enhancement:** DSD Enhancements must be unlocked to run. When any part of the Enhancement is run for the first time, the **DSD Enhancement License Agreement and Activation** window will appear. Follow the steps shown on that window. *You can click the Help button for more detailed instructions.*

Note: On the next page is a screenshot of the DSD Enhancement License Agreement and Activation window.

After accepting the License Agreement, you can then select the type of unlocking that you'd prefer. The choices are File, Web, Demo and Manual Entry.

File Unlock: After receiving your encrypted serial number key file from DSD, and placing that file in the MAS90/SOA directory, selecting this option will unlock all products keys contained in the file. This means you can unlock all enhancements at once using this option.

Web Unlock: If the system that is running the DSD Enhancement *has web access* and you *have sent DSD your Sage Serial number*, you can unlock the Enhancement without assistance using Web Unlock. When this option is selected, the program will attempt to download encrypted serial number key file from DSD *and then proceed to unlock all enhancements contained in the file*.

- *The Sage 100 system that is being used must have web access for this option to be effective.*
- *You can send your Sage Serial Number to your DSD Enhancements sales representative.*

Demo Unlock: If a Demo mode is available for the Enhancement you're running, you will be able to Demo unlock the product without assistance from DSD for demo purposes.

- *Creating a Demo Unlock is a good way to temporarily unlock DSD Enhancements off-hours, if you do not have web or email access. Later, you can unlock the product fully, during business hours.*

Manual Entry Unlock: If you want to unlock a single enhancement using a single encrypted key, you can select this option and enter the 64 character key you receive from DSD by copy and paste.

Note: You can also unlock a DSD Enhancement through the [DSD Enhancement Control Panel](#) found on the Library Master Utilities Menu. Then, select the Enhancement with your mouse from the list of Enhancements and click the **Unlock Product** button on the right side of the window.

7. **Convert Data:** After unlocking, the DSD Conversion Wizard will appear. Follow on-screen instructions to complete data conversion. *You can exit the conversion program without converting data. The Enhancement will not proceed, however, until data is converted. If you enter an enhanced program and data has not been converted, the conversion program will run again.*

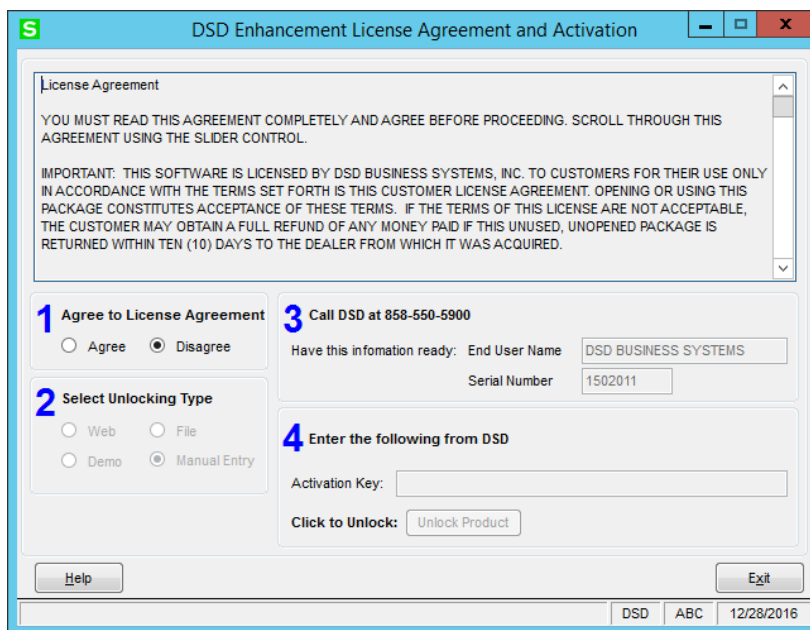
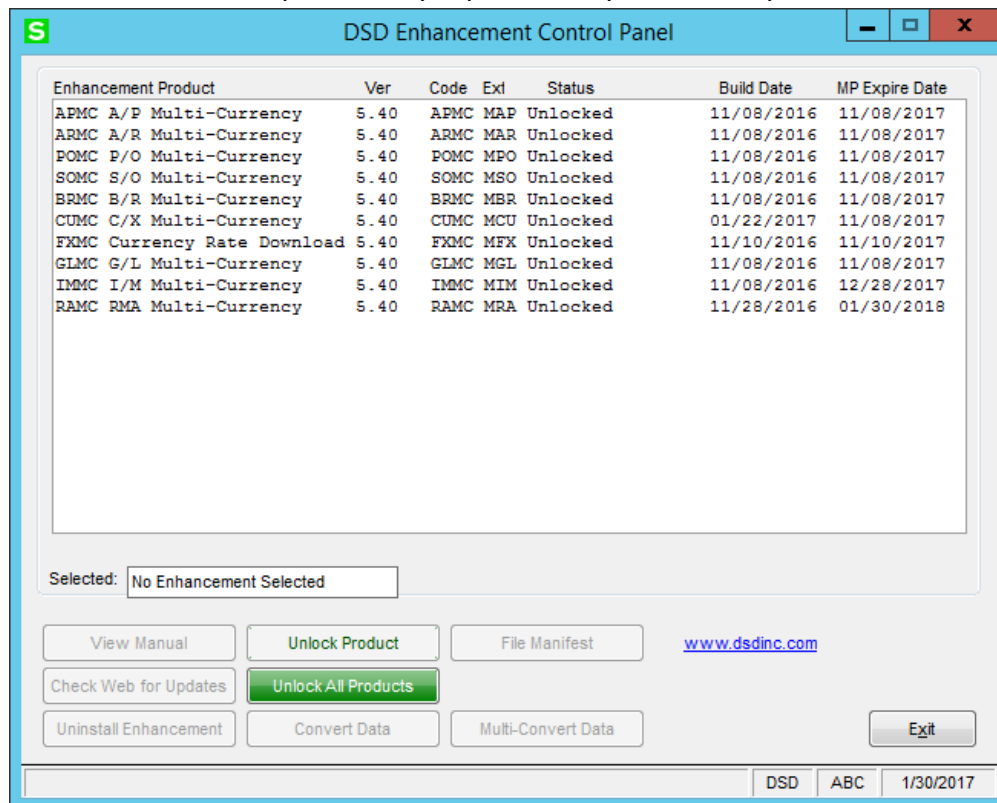
DSD Enhancement Control Panel

Starting with version 3.61, all DSD Enhancement products include DSD's Enhancement Control Panel. The **DSD Enhancement Control Panel is accessed from the Library Master Utilities menu.**

The DSD Enhancement Control Panel is a simple to use yet powerful system to help maintain DSD Enhancements installed on a Sage 100 system. To use it, select an Enhancement product from the list on the window and then click the button which corresponds with the desired task.

View Manual: This button will display the product manual for the selected Enhancement using Adobe Acrobat. For this to be possible, the PDF file for the corresponding manual must be in the "MAS90/PDF" folder in the Sage 100 system. If the file is not present, and the system has web access, the correct PDF file will be automatically downloaded from the DSD website, put into the "MAS90/PDF" folder and then displayed.

Check the Web for Updates: This button will check the DSD website to see what the current build is the selected Enhancement and alert the user if a later version is available. *This requires an FTP web connection on the Sage 100 system.*

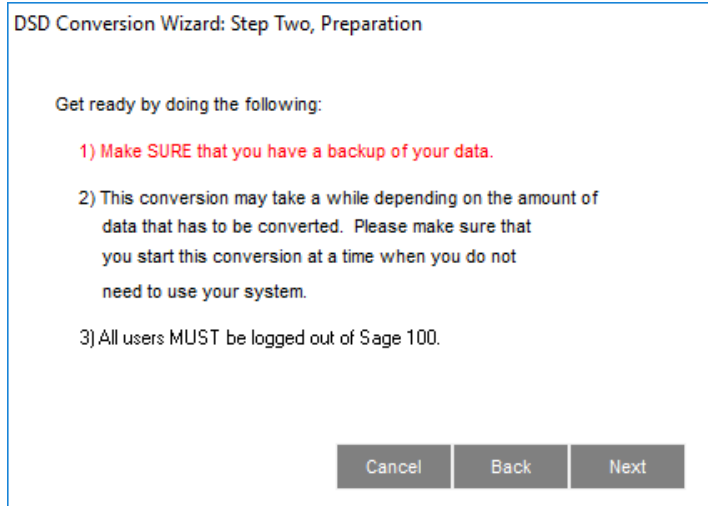
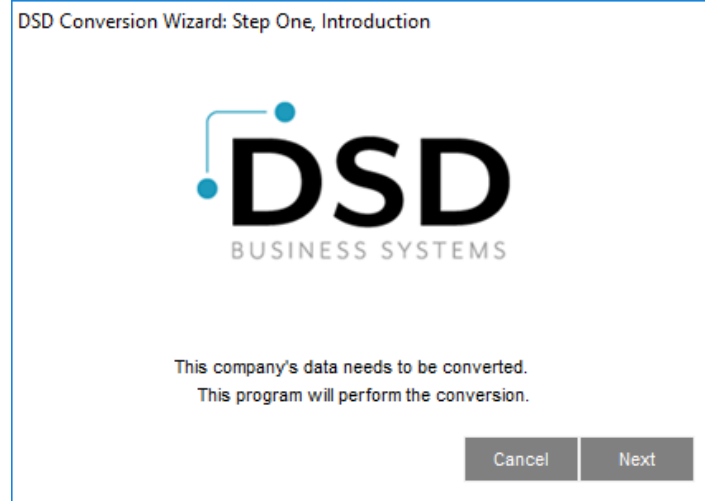


Unlock Product: This will cause the DSD Enhancement License Agreement and Activation window to appear. Using this window is described on the previous page. *This button is disabled if the selected Enhancement is already unlocked.*

Unlock All Products: This will cause the DSD Enhancement All License Agreement and Activation window to appear. This window is similar to the one described on the previous page, but has only web and file as options to unlock. *This button is never disabled.*

Convert Data: After unlocking, if Conversion has not been done, the Convert Data button can be pushed and the Enhancement data conversion program will run. Data conversion is *non-destructive*, and may be triggered any number of times. **However, this must be completed before any Multi-Currency processing is allowed in the respective module.** *Sometimes this is required to fix data records imported or updated from a non-enhancement installation.*

This conversion can also be triggered by launching a task in any Multi-Currency module that has not been previously converted. Conversions for more than one company at a time can be done using Multi-Convert Data below.



Help: The Help button, located at the bottom right of the window, opens an HTML help file .

Get Adobe Acrobat: Opens the Adobe Acrobat website to the page where Acrobat can be downloaded and installed.

Uninstall Enhancement If this option is available, then selecting this button will start the un-install process, removing the enhancement from the system. (for more information [see Uninstall DSD Enhancements](#))

There is also a link to the DSD website.

Note: the best way to accomplish many of the above tasks is to use the Multi-Convert Data, as documented below.

Multi-Convert Data: Multiple Companies can be converted at the same time for a given Enhancement. The advantage of using this method when Multi-Currency is installed, and a Base Currency Code has not been assigned, it can be entered here to entirely set up the CUMC module.

	Company	Company Name	Activated	Converted	Base Currency	Convert
1	AB1	ABC Multi-Currency CAD 5.20P3	<input checked="" type="checkbox"/>	<input checked="" type="checkbox"/>	CAD	<input type="checkbox"/>
2	AB2	ABC Multi-Currency Consolidation 5.20P3	<input checked="" type="checkbox"/>	<input checked="" type="checkbox"/>	USD	<input type="checkbox"/>
3	ABC	ABC Multi-Currency USD 5.20P3	<input checked="" type="checkbox"/>	<input checked="" type="checkbox"/>	USD	<input type="checkbox"/>
4	ABX	American Business Expressions	<input checked="" type="checkbox"/>	<input checked="" type="checkbox"/>	USD	<input type="checkbox"/>
5	EEC	Edwardson Electric Company	<input checked="" type="checkbox"/>	<input type="checkbox"/>		<input type="checkbox"/>
6	MFG	MFG Computer Systems, Inc	<input checked="" type="checkbox"/>	<input type="checkbox"/>		<input type="checkbox"/>
7	XYZ	XYZ Manufacturing Company	<input checked="" type="checkbox"/>	<input type="checkbox"/>		<input type="checkbox"/>

One **must** select all Multi-Currency modules in the DSD Enhancement Control Panel one at a time to do this conversion (except CUMC and FXMC). When you do the first one (doesn't matter which one) you must enter a valid Base Currency code. **You can't proceed without doing that!** After the first one is done, the Base Currency column is already populated, just do the "Convert" checkboxes are needed.

Section C: Setup

CUMC Multi-Currency Set-up

Set-up Procedure Overview

1. Install the CUMC Multi-Currency module as described above. It is Ok to install all of the DSD Multi-Currency modules at once. However, you will need to Setup the CUMC module first. **The best choice is to do all conversions in the [DSD Enhancement Control Panel](#), as in the previous page above.**
2. In the Multi-Currency Main Menu, select Multi-Currency Options. If you are running this the first time it will take you to the Company Maintenance screen to Activate the C/X module first. You will then have to select the Options again). You **MUST define a Base Currency** on the Main tab before continuing with any other module conversions. You may set up FASB 52 and accounts here if GLMC is to be used in a FASB52-required company. Be certain that Reporting accounts are not used or posted to anywhere else. (For more information see [Multi-Currency Options](#))
3. **IMPORTANT: when Multi-Currency is installed, ALL active companies must have CUMC Enabled and have a Base Currency declared before any other accounting module that has Multi-Currency processing can be converted and then used.**

Order in Which to Convert Data and Set-up Multi-Currency Modules

The Multi-Currency module must be set-up and converted first as other conversions rely on CUMC data during conversion and set-up. Note that the modules are usually Converted/Setup in the same order that they appear on the Modules menu in the Sage 100 Launcher Menu but this is not required. Conversion is triggered by selecting the Setup/Options or any main choice in the accounting module, or in the DSD Enhancement Control Panel.

1. General Ledger Multi-Currency (GLMC)
2. Accounts Receivable Multi-Currency (ARMC)
3. Accounts Payable Multi-Currency (APMC)
4. Inventory Management Multi-Currency (IMMC)
5. Sales Order Multi-Currency (SOMC)
6. RMA Multi-Currency (RAMC)
7. Purchase Order Multi-Currency (POMC)
8. Bank Reconciliation Multi-Currency (BRMC)

Note: It's best if the Conversions are done via the [DSD Enhancement Control Panel](#).

Avoid a Support Call

Keep these notes in mind while installing and setting-up Multi-Currency.

1. Once the Base Currency is set-up, it **cannot** be changed. (see [Section H: Appendices](#) for exceptions)
2. Set-up all Multi-Currency modules on the system in each company before performing any transactions in any module in that company.

Data Requirements

Before beginning the Multi-Currency Startup process, you should have the following information available:

- List of Currencies used including the Base Currency and all foreign currencies in which the companies processes transactions.
- At least one Exchange Rate for all foreign currencies used, usually for the earliest date in the current Fiscal Year, which will be the default rate until more current ones are added.
- Gain/Loss and Round-off Account numbers to be used in General Ledger postings and reports.

Additionally, if you will be using **GLMC** and the **FASB 52** reporting capabilities, you will need this information before starting:

- FASB 52 Reporting Currency including its Exchange Rates.
- Equity Adjustment from Translation Account number to be used when printing FASB 52 Translated Financial Statements.
- FASB 52 Translation Type (Historical or Current) to be used for each Account Break group.
- FASB 52 Beginning Balance for each account in the FASB 52 Reporting Currency (see the G/L Journal Entry section for how to create Beginning Balances in the FASB 52 Currency).

Section D: Multi-Currency Main Menu

Multi-Currency Options

This choice is used to tailor the way in which your Multi-Currency system interacts with all other modules.

Enable Multi-Currency: This check box will be used *in future releases* of Multi-Currency to enable or disable all features of Multicurrency in all modules. ***It is now required to be checked and a Base Currency code entered in every active Company.***

Base Currency: define the Base Currency code and name (this will be the default currency). This is the Currency used to express the GL module amounts. Any existing Sage 100 transactions in any MC module will be converted to this Currency.

IMPORTANT: again, when Multi-Currency is installed, **ALL** active companies must have the above two fields entered and DSD data conversion run (see the [Setup](#) section above).

Multi-Currency Supervisor Password: If desired, enter a Password to be used to override the Entry Currency and/or Exchange Rate during Data Entry in Accounts Payable, Accounts Receivable, Purchase Order and Sales Order. Use up to six characters. If you do not wish to enter a Password, press **<Enter>** to leave this field blank. If this field is left blank, the system will not ask for a Password for overrides.

Default Currency for Reports: Select **Base Currency** to default subsidiary reports (i.e. A/P Aging, A/R Trial Balance) to print in Base Currency. Select **Entry Currency** to default subsidiary reports to print in Entry Currency. All G/L Reports default to print in Base Currency.

Currency for Landed Costs in PO: If POMC is installed, you have the option of entering Landed Costs in Receipt of Goods Entry in either Base Currency or Entry Currency.

Use One Exchange Rate: This checkbox will be used to change the Exchange Rate grid to show only one rate rather than four.

G/L Round-off Account: If GLMC is installed, enter the Round-off Account to be used in General Journal Entry and Update. A round-off occurs when General Journal entry is in a non-Base Currency, and the conversion back to Base Currency causes a round-off (usually a one penny round-off).

Round-off for Reporting: If GLMC is installed, enter the default G/L Account to be used when printing reports in a non-Base Currency to accumulate any balancing amount for the recalculations.

FASB Tab: FASB 52 Translation

Required: *If GLMC is installed*, check this box if you require Foreign Currency Translations to conform to FASB 52 requirements. (FASB 52 is a Financial Reporting Requirement of U.S. Subsidiaries located in other countries. It requires that some G/L Account Types be reported either at Current or Historical exchange rates).

NOTE: *If you check this selection, the system will check to see if the A/P, A/R, or P/O modules are installed and, if so, will default the **Post Sales Journal/Cash Receipts Journal/Registers To General Ledger In Detail?** option to “selected” in the Setup screens for those other modules. These fields will be*

skipped when the A/P, A/R or P/O Options are accessed directly.

If you change this field from **Cleared** to **Checked**, the [Recalculate FASB 52](#) (on the Multicurrency Utilities Menu) should be run to derive a FASB 52 rate and amount for previously entered transactions.

FASB 52 Equity Adjustment: *If GLMC is installed*, enter the G/L Account to be used when printing FASB 52 Translated Financial Statements. This field will be disabled if the FASB 52 Translation Required check box is not checked.

NOTE: *Although the Round-off for Reporting and the FASB 52 Equity Adjustment accounts can be the same (Equity) account, they **must NOT** be the same account as either the GL Round-off Account or the A/P and A/R Gain/Loss or Round-off (Expense) accounts.*

Integration Tab: The modules that have Multi-Currency installed and activated in this company are indicated here. This is for information only.

FXMC Auto Rates Tab: this is disabled unless the FXMC module is installed. See [Section I for FXMC information](#).

Currency Code Maintenance

This choice is used to setup all Foreign Currencies and their corresponding Exchange Rates.

Currency Code: Each Currency maintained is designated by a unique alphanumeric code (one to four characters). Select the List Mode to list all of the Currency Codes on file. Use the alternate list button to list ISO Currency Codes.

NOTE: *It is recommended to use the 3 character ISO Currency Code in this field.*

Currency Name: This 30-character field contains the name of the currency as it will appear in all reports and screens.

Base Currency: The system will allow only one Base Currency to be defined in Multi-Currency Options. When displaying the Base Currency, this check box will be disabled. The Base Currency is the “functional” or “local” currency of the Base economic environment in which the Company operates and in which General Ledger will be maintained.

ISO Currency Code: Enter (or use the Lookup) for the Currency Code accepted by ISO (International Organization for Standardization). The ISO Currency Name should print to the right of this field.

NOTE: *this code must be the correct ISO Currency Code if the FXMC module is installed.*

Currency Plural: This 30-character field is used for printing Accounts Payable Vendor checks.

Currency Symbol: This field is populated automatically from the ISO Currency Symbol, but may be overridden if desired. This Currency Symbol is used when printing amounts in Forms, Accounts Payable Checks, and Financial Statements using this currency.

When you have completed the Currency Code entry, you may add rates in the **Exchange Rates** grid.

NOTE: *the Exchange Rates are not available for the Base Currency.*

Currency Code Maintenance (ABC) 9/4/2017

Currency Code: CAD Name: Canadian Dollar Source: XE <http://www.xe.com/currencyconverter> Get Today's Rates

Base Currency: ☐ Currency Plural: Canadian Dollars Currency Symbol: CAD

ISO Currency Code: CAD ISO Currency Name: Canada, Dollars

Exchange Rates

Year: 2017

	Date	AR/ISO Rate	AP/PO Rate	GL Rate	FASB 52 Rate
1	9/4/2017	1.23942000	1.23942000	1.23942000	1.23942000
2	9/3/2017	1.23958000	1.23958000	1.23958000	1.23958000
3	9/2/2017	1.23851000	1.23851000	1.23851000	1.23851000
4	9/1/2017	1.25623000	1.25623000	1.25623000	1.25623000
5	8/31/2017	1.25657000	1.25657000	1.25657000	1.25657000
6	8/30/2017	1.24911000	1.24911000	1.24911000	1.24911000
7	8/29/2017	1.24499000	1.24499000	1.24499000	1.24499000
8	8/28/2017	1.24802000	1.24802000	1.24802000	1.24802000

Accept Cancel Delete Print

Exchange Rates

The Exchange Rates grid allows the manual addition/maintenance of Exchange Rates for the selected Currency Code by year if desired.

Select the appropriate year from the drop box, then use the “Insert Row” icon to add a new Exchange Rate. Rows may be deleted, moved or reset by selecting the appropriate icon.

Date: Enter an Exchange Rate Date. You may select an existing date record from the List Box to edit. Future Effective Dates may be entered.

AR/SO Rate: Enter the Rate to be used for the A/R and S/O modules in relation to the Base Currency as of the Effective Date. When a new rate is entered, it is copied to all other Rates as a default.

AP/PO Rate: Enter the Rate to be used for the A/P and P/O modules in relation to the Base Currency as of the Effective Date. This field will default to the AR/SO Rate when first entered.

GL Rate: Enter the Rate to be used for the G/L module in relation to the Base Currency as of the Effective Date. This field will default to the AR/SO Rate when first entered.

NOTE: . (When FASB 52 is installed and a Multi-Company Consolidation is run, this is the rate used for a source Company’s FASB52 G/L Accounts marked as Current.)

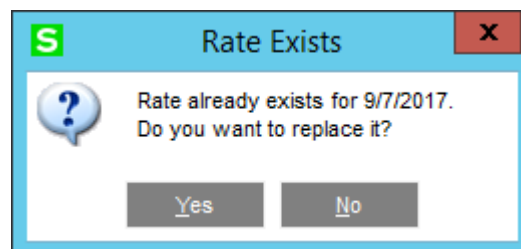
FASB 52 Rate: Enter the Rate to be used for the FASB 52 translation in relation to the Base Currency as of the Effective Date. This field will default to the AR/SO Rate when first entered.

NOTE: . If FASB52 is not enabled, this rate is never used. If enabled, this rate is updated to the FASB52 G/L Detail Transaction record for the date of the transaction. This is also the rate used in the Multi-Currency Utility:” Recalculate FASB 52”).

Get Today’s Rates: Download Exchange Rates manually from XE.com. The reference site is

<http://www.xe.com/currencyconverter/> (see comments [here](#)). The rate is downloaded for the Module Date for this Currency Code (change the Module Date before launching Currency Code Maintenance to obtain a different date). If a data already exists for a Currency Code, this message will display. Answer Yes to obtain the rate and overwrite what was there. (The rate may be the same as what was already there). If a rate has been obtained, this message is displayed.

For automatic unattended Exchange Rate download, see Section I below.



NOTE: Exchange Rates do not need to be entered unless they have changed. If any Rate in a Transaction is not found in the Currency Code Table, it will default to the next older day. This is used when a business wants to use the same rate for an entire Period, so that the Rate only be entered on the first Day of that Period.

NOTE: It is suggested that an Exchange Rate be entered for a date as far back as possible, since the system will always use the Exchange Rate of the next prior date if one is not found for the exact date.

Avoid Inverting Exchange Rates: Exchange rates are always expressed in relation to your Base Currency. When using a lookup service such as <http://www.xe.com/currencyconverter/>, you will see different ways of expressing the Exchange Rate. The correct rate to use is when the description is **One (Your Base Curr Code) = 1.xyz (or .xyz) (the Currency Code your maintaining)**. For example: **1 US Dollar = 1.25660 Canadian Dollar**.

Foreign Price/Cost Maintenance

NOTE: this selection is not available if the Inventory Multi-Currency module is not installed.

This choice is utilized with the Inventory Multi-Currency module. It is used to define prices for S/O and costs for P/O in other than the Base Currency. See the IMMC module for more information.

Foreign Price/Cost Maintenance (ABC) 12/29/2016

Currency Code: CAD

Item No.: 1001-HON-H252 HON 2 DRAWER LETTER FILE W/O LK

Foreign Price: 96.000 Use Foreign Price in S/O ☒

Foreign Cost: 34.000 Use Foreign Cost in P/O ☒

Accept Cancel Delete

If a Miscellaneous Item is entered, an additional check box appears to obtain costs from the Miscellaneous Item Maintenance costs.

Foreign Price/Cost Maintenance (ABC) 12/29/2016

Currency Code: CAD

Item No.: /287-GA 19" Gadget with Wheels

Foreign Price: 200.000 Use Foreign Price in S/O ☒

Foreign Cost: 85.000 Use Foreign Cost in P/O ☒ Use Misc Foreign Cost in A/R and S/O ☒

Accept Cancel Delete

Section E: Multi-Currency Reports Menu

Currency Code Listing

The Report Selection Screen is shown here:

Starting and Ending Currency Code: Select the **All** button to accept all Currency Codes on file, or enter a range of Currency Codes. Select the List Modes to list all Currencies on file.

Starting and Ending Effective Date: Select the **All** button to print all exchange rates information or enter a range of Effective Dates.

NOTE: You may also use the **Print Button** on the Currency Code Maintenance Panel to print the Currency Code Listing.

Currency Code Audit Report

If you have made any manual additions, changes or deletions to the Currency Code file, an Audit record is created, the Currency Code Audit Listing can be used to print these changes. This report is on the C/U Reports menu.

Starting and Ending User Code: Select the **All** button to print transactions for all User Codes on file, or enter a range of User Codes. Select the List Modes to list all Users on file.

Starting and Ending Effective Date: Select the **All** button to print transactions for all dates or enter a range of Effective Dates.

Foreign Price/Cost Listing

This choice is utilized with the Inventory Multi-Currency Module and is used to list the contents of the Foreign Price/Cost Maintenance. See the IMMC module for more information.

Foreign Price/Cost Listing (ABC) 12/29/2016

Report Setting: STANDARD

Description: Foreign Price/Cost Listing

Setting Options:

- Type: Public
- Print Report Settings: ☐
- Number of Copies: 1
- Default Report: ☒
- Three Hole Punch: ☐
- Collated: ☒

Options:

- Information to Print: All
- Page Break By Currency: ☐

Selections:

Select Field	Operand	Value
Currency Code	All	
Item Code	All	

Bullzip PDF Printer

Keep Window Open After: Print ☐ Preview ☐

Print Preview Setup ?

Foreign Item Pricing Information

This choice is utilized with the Inventory Multi-Currency Module and is used to list prices for A/R or S/O in other than the Base Currency. See the IMMC module for more information.

NOTE: If Purchase Order Multi-Currency is installed, the Vendor Price Level Maintenance print selection will list the Foreign Costs.

Foreign Item Pricing Report (ABC) 12/29/2016

Report Setting: STANDARD

Description: Foreign Item Pricing Report

Setting Options:

- Type: Public
- Print Report Settings: ☐
- Number of Copies: 1
- Default Report: ☒
- Three Hole Punch: ☐
- Collated: ☒

Options:

- Information to Print: All
- Page Break By Currency: ☐

Selections:

Select Field	Operand	Value
Currency Code	All	
Item Code	All	

Bullzip PDF Printer

Keep Window Open After: Print ☐ Preview ☐

Print Preview Setup ?

A/R Unrealized Gain/Loss Report

This report is utilized with Accounts Receivable Multi-Currency and is used to show the Currency Gain or Loss per AR Invoice compared to the report date. See the ARMC module for more information.

A/R Unrealized Gain/Loss Report (ABC) 12/29/2016

Report Setting: STANDARD [Search] Save

Description: A/R Unrealized Gain/Loss Report

Setting Options:

- Type: Public [v]
- Print Report Settings: ☐
- Number of Copies: 1 [v]
- Default Report: ☒
- Three Hole Punch: ☐
- Collated: ☒

Options:

- Unrealized Gain/Loss As Of: 12/29/2016 [Calendar]
- Print Report In Detail: ☒
- Exclude Future Transactions: ☐
- Exclude Zero Balance Invoices: ☐

Selections:

Select Field	Operand	Value
Customer Number	All [v]	
Currency Code	All [v]	

Bullzip PDF Printer [v] Keep Window Open After Print ☐ Preview ☐ [Print] [Preview] [Setup] [Help]

A/P Unrealized Gain/Loss Report

This report is utilized with Accounts Payable Multi-Currency and is used to show the Currency Gain or Loss per AP Invoice compared to the report date. See the APMC module for more information.

A/P Unrealized Gain/Loss Report (ABC) 12/29/2016

Report Setting: STANDARD [Search] Save

Description: A/P Unrealized Gain/Loss Report

Setting Options:

- Type: Public [v]
- Print Report Settings: ☐
- Number of Copies: 1 [v]
- Default Report: ☒
- Three Hole Punch: ☐
- Collated: ☒

Options:

- Unrealized Gain/Loss As Of: 12/29/2016 [Calendar]
- Print Report In Detail: ☒
- Exclude Future Transactions: ☒
- Exclude Zero Balance Invoices: ☒

Selections:

Select Field	Operand	Value
Vendor Number	All [v]	
Currency Code	All [v]	

Bullzip PDF Printer [v] Keep Window Open After Print ☐ Preview ☐ [Print] [Preview] [Setup] [Help]

Section F: Multi-Currency Utilities Menu

Recalculate FASB 52

This utility is used if the FASB 52 Integration is turned on in Multi-Currency Options, and General Ledger Multi-Currency is installed.

Refresh FASB 52 Rates on GL Detail: Check this box if you want to recalculate the FASB 52 Historical Rates and Amounts in the G/L Detail Posting records.

NOTE: *FASB52 Historical Rates and Amounts are added to G/L Detail Postings when they are updated from any Accounting Module using the Posting Date to lookup the rate in Currency Code Maintenance. Checking this box will cause that rate to be overridden with the FASB 52 Exchange Rate in Currency Code Maintenance for that Transaction Date. If no Rates have been changed/added/deleted in Currency Code Maintenance, then the G/L FASB52 rates and amounts would not change. See below regarding Average Rates.*

Recalculate FASB 52 Balances: Uncheck this box if you want to update the Period Summary Balances with the GL Detail FASB 52 information from the G/L Detail file

NOTE: *it is highly recommended to leave this box checked, which is the default.*

Recalculate FASB 52 Base Transactions Only: Check this box to only recalculate FASB 52 rates on postings entered in the Base Currency. Transactions entered in a foreign currency will not be modified.

Set FASB52 Flag: If a Company has done processing *without* FASB52 enabled, then is enabled later, one should check this box. It has no effect on existing G/L Transactions that already have FASB52 calculated information

Recalculate FASB52 Zero Amounts Only: Transactions that have any non-zero amount in the FASB 52 Debit or Credit will not be recalculated.

S Recalculate FASB 52 (AB1) ...

This utility refreshes the FASB 52 Exchange Rates on GL Detail Postings and Recalculates FASB 52 Balances.

It is recommended that a data backup be completed prior to running this utility.

Refresh FASB 52 Rates on GL Detail ☒

Recalculate FASB 52 Balances ☒

Recalculate FASB 52 Base Transactions ☐

Set FASB52 Flag ☐

Recalculate FASB 52 Zero Amounts Only ☐

Recalculate All Dates ☐

Starting Date

Ending Date

Period Average Rate

Period End Rate

Get Average Rate

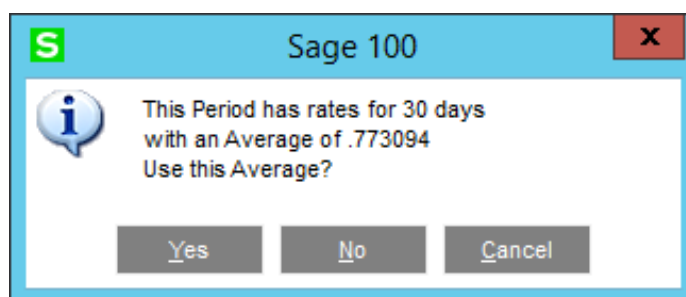
Proceed **Cancel**

Recalculate All Dates: the default is to do all dates. Clear this check box to enter Starting and Ending Dates, and enables the choice of Average Rate. These dates will default to the Current Fiscal Year and Period in G/L Options.

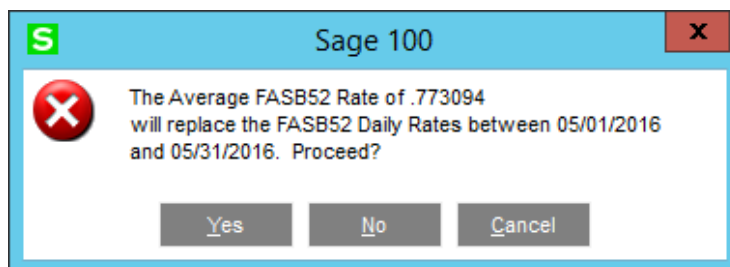
Starting Date/Ending Date: Only GL Detail transactions between these dates will be recalculated. This is advisable when earlier dates should not be changed. These are automatically entered as the current G/L Fiscal Year and Period in G/L Options.

Period Average Rate and Period End Rate: These default to zero when the Starting and Ending Dates are enable when Recalculate All Dates is unchecked. When they are left at zero, they are not used, but the FASB52 Rate in Currency Code Maintenance is used to update the G/L Detail Postings FASB52 Rate and Amounts. One may manually enter Rates in these boxes, but the Get Average Rate button is normally used to determine the Rates for the Date Range.

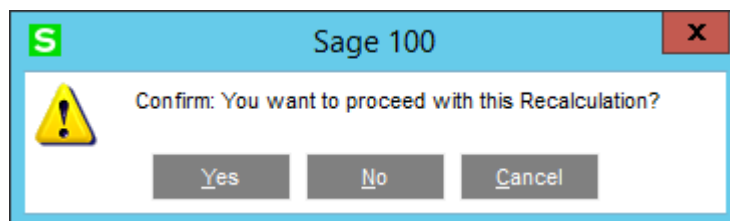
Get Average Rate: When this button is pressed, an Average Rate for the range of Starting Date through Ending Date is calculated from the Rates in Currency Code Maintenance, and this window is displayed. Indicated are the number of days within that range that are used.



If Yes is selected, the Period Average Rate and Period End Rate are displayed. When Proceed is selected, this window is displayed, confirming what will be used to update the FASB52 Rates and Amounts for the date range indicated. Click No or Cancel to abandon the changes.



A final prompt is displayed to confirm this change of FASB52 Rate and Amount changes in the General Ledger. Click No or Cancel to abandon the changes.



If recalculated, one can then inspect the General Ledger Transactions or History to see the results of this utility.

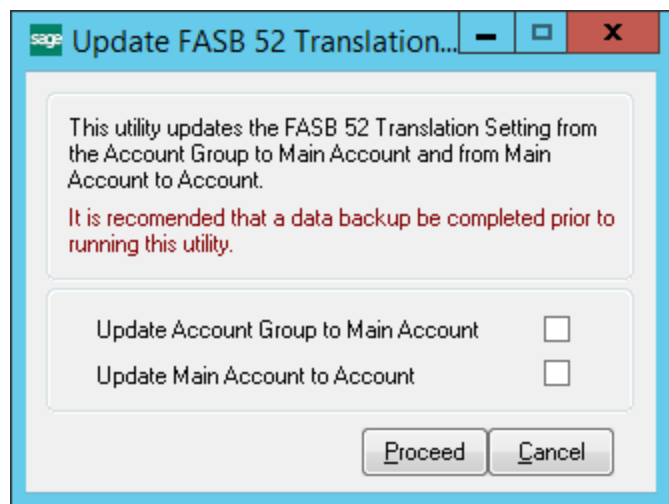
Update FASB 52 Translation

This utility is normally used when FASB 52 Integration is FIRST turned on in Multi-Currency Options, and General Ledger Multi-Currency is installed. One then would use G/L Account Group Maintenance to indicate either Current or Historical for each Account Group. However, Account Group Maintenance does NOT update the G/L Accounts. Therefore use this utility to copy the Current or Historical FASB52 choices defined in G/L Account Group Maintenance to the G/L Main Accounts and the G/L Accounts.

NOTE: *this is usually only used once, when the FASB52 labels are first defined in G/L Account Group Maintenance*

Update Account Group to Main Account: Check this check box if you want to update the FASB 52 Translation Setting for each Account Group (setup in Account Group Maintenance) to every Main Account that belongs to that Account Group. After this step is done, this next step should be done to assign the settings to all G/L Accounts.

Update Main Account to Account: Check this check box if you want to update the FASB 52 Translation Setting for each Main Account Group (setup in Main Account Maintenance) to every G/L Account that belongs to that Main Account.



Multi-Company Consolidation (Translation)

NOTE: This utility is available for use only if General Ledger Multi-Currency is installed.

Multi-Company Consolidation allows the combining of any number of Company's General Ledger data into one consolidation company code, for the purpose of printing combined General Ledger Reports.

This menu option should only be accessed from any Consolidation Company. In other words, if you are combining companies **001**, **002**, and **003** into the **999** consolidation company, the **Multi-Company Consolidation Utility** should only be set up and used in the **999** company.

NOTE: Do NOT use this utility on a non-Consolidation Company Code. This utility backs-up, then erases the GL Data Files prior to consolidation, so running this utility from a non-Consolidation Company Code will cause data loss. *If you accidentally do this on the wrong company, please contact DSD Enhancement Support immediately.*

NOTE: You may only consolidate companies that have the same:

1. GL Account Structure (i.e. G/L Account Mask) as the consolidation company. For example, if you have set up the Consolidation Company to have an Account Structure of **12345-67-890**, then the companies to consolidate must have this same account mask.
2. Fiscal Year Setup. This utility combines fiscal year setups, so if one company has a year-end of 12/31 and another company has a year-end of 03/30, then the consolidation will have unexpected results.

Setting Up the Consolidation Company

Create the Consolidation Company from Company Maintenance, activate the C/I, G/L, and C/X modules.

Next, define the Base Currency for the Consolidation in the [Multi-Currency Main Menu, Options](#).

Module	Data Level
Common Information	5.30
Multi-Currency	5.30
General Ledger	5.30

At the bottom of the window, there is a checkbox labeled 'Use as Default Company for Server Settings' and buttons for 'Accept', 'Cancel', 'Delete', and a help icon.

Next create an initial G/L using General Ledger Setup Menu, General Ledger Options. In the Setup Wizard, select *Create The Account Structure and Copy From Another Company*.

Then choose any Company that will eventually be added to your list of Consolidation companies.

This data entry is used to setup the list of companies that are to be consolidated into the current company.

Note: ONLY use this utility on a Consolidation Company Code. This utility backs-up, then erases the GL Data Files prior to consolidation, so running this utility from a non-Consolidation Company Code may cause data loss. *If you accidentally do this on the wrong company, please contact DSD Enhancement Support immediately.*

For each company being consolidated, the user is given the opportunity to define the **beginning** and **ending General Ledger** accounts that are to be brought in.

NOTE: *This utility does not check (or care) whether the consolidated General Ledger is in balance! If you plan to print a consolidated Balance Sheet, it is suggested that all accounts be brought in from the consolidating companies. If, however, you only plan to print Income Statements, or non-financial reports, it would be acceptable to import just a range of accounts.*

Company Code Entry

When the **Company Code** is entered, the consolidating company's **General Ledger** data is immediately checked to make sure the companies Account Structure matches the Consolidation Company's structure, and an error message will appear if the Account Structure is not the same.

A **Lookup** is available for displaying a list of all existing company codes. This display lists all companies, regardless of the existence of General Ledger data for each. The current Company Code may not be entered as one of the consolidating companies.

Entering General Ledger Accounts

The user may elect to import only a range of General Ledger accounts from the consolidating company. If you want to consolidate ALL accounts for this company, you may select the first account as the Beginning Account and the last account as the Ending Account. A **Lookup** is available for the **Beginning** and **Ending Account** fields.

NOTE: Another good choice is to enter zeros for the Beginning Account and nines for the Ending Account (or appropriate alpha characters if your G/L is set up for that)

Budgets vs. Actual

The user may select from **three** options:

Actual – The consolidation process will only bring in G/L Detail and Summary, and NOT Budgets.

Budget – The consolidation process will only bring in Budget data, and NOT G/L Detail or Summary.

Both - The consolidation process will bring in BOTH Budget data, G/L Detail, and Summary.

NOTE: if the Source Company is a different Base Currency than the Consolidation Company, the Budget numbers from the Source Company will be converted to the Consolidation Company using the Date to Use or Module Date, if Translated Current. If one wants to control the actual Budget amounts in the Consolidation Company's Currency, then a separate "dummy" Company should be defined for maintaining the Budgets, and added as another line to the Consolidation.

	Company	Beginning Account	Ending Account	Budget
1	ABC	000-00-00	999-99-99	Actual
2	901	000-00-00	999-99-99	Actual
3				

Transaction Date: ☒ All ☐ Starting ☐ Ending

Transaction Date:

Exchange Rate to use on Current FASB Accounts:

Date to use on Current FASB Accounts:

Use Equity Adjustment Account for this Company Co:

Buttons: Clear, Save, Proceed, Delayed, Cancel, Help

Transaction Date Range

This option allows users to pull in a specific Date Range of postings. This is useful for users that do large consolidations, as only those postings within the date range will be cleared then re-copied from the source Companies, after which the balances are recalculated using the new postings.

Exchange Rate to use on Current FASB Accounts: There are four choices here.

Current Rate: enables one to enter the Period Ending Date to use to lookup the Current Rate from Currency Code Maintenance in the source companies.

Period End Rate: rather than entering a rate, the rates for each Period End date are used.

Historical Only: No translation of Current Rates occur on any G/L Account.

Translated Current: Creates Journal entries to reconcile Current and Historical values. See [Phase 6 and 7 – Calculate and post Adjusting Entries](#).

Posting to Equity Adjustment Account during Consolidation

At the “Use Equity Adjustment Account for this Company Code for Live Posting” field, select the Company Code that has the FASB52 Equity Adjustment Account to use for live posting of Equity Adjustment. If you do NOT select a Company Code, then the consolidation process will not post to the Equity Adjustment Account and any Balance Sheet can be out-of balance.

If you DO select a Company Code, then **Phase 5** of the consolidation process will do the following:

- Scan the detail postings, and calculate the round-off for each Source Journal / Batch Number / Posting Date,
- Post the calculated round-off for each Source Journal / Batch Number / Posting Date as an additional detail entry so that that batch is back in balance.
- The GL Account that is posted to is the Equity Adjustment Account for the Company Code entered in the “Use Equity Adjustment Account for this Company Code for Live Posting” field.
- The Posting Comment is set to “Equity Adjustment posting from Consolidation dated MM/DD/YYYY” (where MM/DD/YYYY is the current date.)

Select the **Save Button** to save the companies entered.

Select the **Clear Button** to clear the companies entered.

Select the **Print Button** to print a listing of the companies and associated account ranges entered.

Performing the Consolidation Process Immediately

Select the **Proceed Button** to immediately consolidate the companies into the current company. As the consolidation process takes place, the user will see the following phases:

1. **Backup / Clear Phase** – this phase backs up the data files that are about to be cleared, and then clears those files.

2. **Phase 1** – this phase consolidates the setup files, such as Account Structure, Account Groups, Account Categories, Main Accounts, Sub Accounts.
3. **Phase 2** – this phase consolidates the G/L Chart of Accounts.
4. **Phase 3** – this phase consolidates the G/L Detail Postings.
5. **Phase 4** - this phase consolidates the G/L Budgets.
6. **Phase 5** - this phase does live posting to Equity Adjustment (if applicable)
7. **Phase 6 and 7** – these phases are only used for the Translated Current method.
8. **Account Balance Recalculation** – this phase recalculates the Account Balances from the G/L Detail Postings.

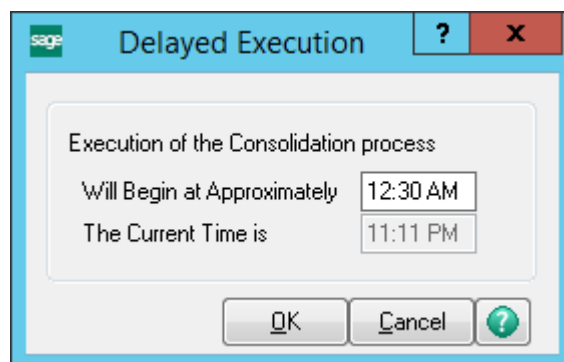
When the consolidation process is completed, the user will be brought back to the menu.

Based on the number of companies to consolidate, and the amount of GL data in each company, it is possible that the consolidation may take a long time to execute. Specifically, **Phase 3, Phase 5, Phase 6 and 7**, and the **Account Balance Recalculation Phase** may take an extended amount of time. Due to this possibility, there is a **Delayed Execution** feature.

Delaying the Consolidation Process

Instead of selection the **Proceed Button**, select the **Delayed Button** to delay the consolidation process.

On this panel, select the time of day to execute the consolidation process, using military time. If you want to run the consolidation at 8:00PM, then enter in 20:00. The utility will then convert that time entered into 8:00PM.



Select the OK Button to trigger the timer.

Select the Cancel Button to exit the Delayed Execution.

If you want to delay the execution of the consolidation process, you must leave the Delayed Execution panel open in Sage 100, which means that you must leave Sage 100 open.

When the consolidation process is completed, the user will be brought back to the menu.

Multi-Currency Consolidations (Translations)

One of the features of this utility is that it allows for consolidations of companies in different currencies IF the FASB 52 currencies are the same. An Example:

Company	Base Currency	FASB 52 Currency
---------	---------------	------------------

ABC	USD	<none>	
001	PESO	USD	
002	GBP	USD	
003	YEN	USD	
CON	USD	<none>	*consolidation company

In this example, the CON Company is the Consolidation company, and there are four subsidiary company codes. Three of those companies have a FASB 52 Currency of USD and the other has a Base Currency of USD.

The Multi-Currency Consolidation utility will use the Base Currency general ledger data for the ABC company code and the FASB 52 data from the other three. There is no need to tell the utility which data to use. When a Company Code is entered on a line, it checks to see that the Source Company has either a Base Currency the same as the Consolidation Company, or a FASB52 Currency the same as the Consolidation Company.

Budgets: Since Budgets do not have dates associated with them, the subsidiary budgets are converted using Current Exchange Rates. If one needs Budgets in the Consolidation Company's currency, a separate dummy Budget Company should be created and added to the Consolidation Company grid. Any "Elimination" entry company could also be used for these Budgets.

Equity Adjustment Account

When printing a Standard Financial Statement in FASB 52 Currency, you typically set up the Equity Adjustment Account to balance out the financial statement. If you want the Equity Adjustment Account amounts to "appear" in the Consolidation company, then you will need to set up the FASB52 Equity Account in at least one Source Company.

How does the Consolidation Utility work?

The following is a behind-the-scenes look at the consolidation process. There are differences in the Phases depending on two options. One is if **All Transactions is** checked, the other is if **Translated Current** is the Consolidation Method. Here are the Phases:

Backup / Clear Phase

In this phase (**if All Transactions is checked**) certain files are backed up and then erased. Here are those files:

GL_AccountGroup.M4T

GL_AccountCategory.M4T

GL_SubAccount.M4T

GL_MainAccount.M4T

GL_FiscalYear.M4T

GL_FiscalYearDetail.M4T

GL_Account.M4T

GL_AccountHistory.M4T

GL_AccountSegment.M4T

GL_DetailPosting.M4T

GL_PeriodPostingHistory.M4T

GL_Budget.M4T

GL_BudgetOptions.M4T

GL_BudgetRevision.M4T

GL_BudgetRevisionOptions.M4T

GL_PeriodBudgetDetail.M4T

In the backup portion of this phase, the standard.M4T files are backed up to .OLD. If a .OLD already exists, then the .OLD is backed up to .OL1. Therefore, you may have 2 backups of each file that is to be cleared.

NOTE: *The purpose of the backup process is to save the existing G/L files if they accidentally run the Consolidation Utility on a non-Consolidation, or "live", Company Code.*

Phase 1 – Setup file Consolidation

In this phase, the following source files are consolidated for the companies defined.

NOTE: *this Phase is only run if the Transaction Date “All” box is checked:*

GL_AccountGroup.M4T

GL_AccountCategory.M4T

GL_SubAccount.M4T

GL_MainAccount.M4T

GL_FiscalYear.M4T

GL_FiscalYearDetail.M4T

GL_Budget.M4T

GL_BudgetOptions.M4T

GL_BudgetRevisionOptions.M4T

Phase 2 – G/L Account Consolidation

In this phase, the following source files are consolidated for the companies entered:

GL_Account.M4T

GL_AccountHistory.M4T

Phase 3 – G/L Detail Posting Consolidation

In this phase, the following source files is consolidated for the companies entered:

GL_DetailPosting.M4T

NOTE: *If the Transaction Date “All” box is checked, all GL Detail for all Years are consolidated This Phase may take a lot of time if there are hundreds of thousands of G/L Detail postings!*

Phase 4 – G/L Budget Consolidation

In this phase the following source files are consolidated for the companies entered:

NOTE: *this Phase is only run if the Transaction Date “All” box is checked:*

GL_BudgetRevision.M4T

GL_PeriodBudgetDetail.M4T

Phase 5 – Live Posting to Equity Adjustment Account during Consolidation

In this phase, the Consolidation Company GL_DetailPosting.M4T file is scanned, by Source Journal / Batch Number / Posting Date and an additional detail posting will occur to the Equity Adjustment Account, in order to assure the Balance Sheet is forced to balance.

NOTE: *this Phase is only run if Translated Current is **not selected***

Phase 6 and 7 – Calculate and post Adjusting Entries

NOTE: *these Phases are only run if Translated Current is **selected***

In these phases, in any G/L Accounts marked as Current in the source FASB52 Company, an adjusting G/L entry for each Period End date is created to match the Consolidation Company's Historical values to the calculated Current value, then reversed on the first day of the next Period. This is to allow the Balance Sheet to maintain the actual Historical value in Current accounts for each Period. So a Consolidation Company Balance Sheet can be run for previous Periods, not just the Current one.

NOTE: *Ideally, the Translated Current selection should be used as a Translation of a single foreign FASB52 company to a "dummy" Base Currency Company, which can then be Consolidated to other companies of the same Base Currency. If more than one Company is included in the Consolidation list, then the results can be unpredictable.*

Account Balance Recalculation

In this phase, the following the **Recalculate Account Balances** is executed. This is the same **Recalculate Account Balances** utility that is on the G/L Utilities menu. **If Translate Current is selected**, this step is executed three times.

What General Ledger Reports may I run on the Consolidation Company?

The consolidation process combines both Summary and Detail postings for each company, so many of the G/L Reports may be run for the Consolidation Company, such as:

1. Chart of Accounts
2. General Ledger Worksheets
3. General Ledger Trial Balance
4. Financial Reports
5. General Ledger Detail Report
6. General Ledger Detail by Source Report
7. Exception Report
8. General Ledger Graphics
9. General Ledger Analysis
10. Budget and History Report
11. Budget and History Report by Period

What General Ledger Data is NOT included on a Consolidation?

The consolidation process does not combine Source Journals, Account Memos, Main Account Memos, or Source Journal History, so you may not print these reports:

1. Reprint Journals
2. Source Journal History Report
3. Account Audit Report
4. Account Memo Printing
5. Main Account Memo Printing

Can I do normal data entry and processing in the Consolidation Company?

Yes, ***but not recommended.***

Once the consolidation process is completed, you ***may*** add, change, or delete GL Accounts, and do General Journal or Transaction Journal Entries.

NOTE: but if you do add entries to the Consolidation Company, and then re-consolidate the Consolidation Company, then all that processing will be lost. A rare exception would be if you do not check the Transaction Date to All, and have only made entries that are NOT within the Starting and Ending Date range. Still, results might be unprofitable.

A better option is to create an "Elimination" company (in the same Base Currency as the Consolidation company) for additional Journal Entries, and add this Company to the Consolidation list.

Rebuild A/R, A/P, and S/O Sales History Files

NOTE: This utility performs the same functions as the IMFX Enhancement, but is modified for Multi-Currency. It has five selections, some depending on what other Multi-Currency modules are installed.

The top three options are for Sales Order Multi-Currency.

Option #4 is for A/R Multi-Currency whether or not Sales Order Multi-Currency is installed

Option #5 is for A/P Multi-Currency

NOTE: the IMFX Module should *not* be added if Multi-Currency is in place.

Rebuild History Files

Rebuild IM_ItemWhseHistoryByPeriod (Whse Item Sales History By Period) ☐

Rebuild IM_ItemCustomerHistoryByPeriod (Customer Item Sales History By ☐

Rebuild SO_SalesHistory (S/O Item Sales History) ☐

Rebuild AR_CustomerSalesHistory (A/R Customer Sales History) ☐

Rebuild AP_VendorPurchasesHistory (A/P Vendor Purchases History) ☐

Inventory history based on calendar or fiscal periods: Calendar

Current Inventory period: 05

Current Inventory period ending date: 5/31/2020

Current Inventory year ending date: 12/31/2020

Backup your Sage 100 data before proceeding with this rebuild!

Proceed Cancel

Exchange Rate Download

This utility downloads Exchange Rates from the web for the Currency Code(s) and Date(s) selected **for the current Company only**. One can also choose to overwrite existing rates in the Currency table (which does **not** change the rates in entries already posted).

If FXMC is installed, two additional buttons and one checkbox appear:

Download today's Rates for all Companies: This button appears if the FXMC module is installed.

Only Today's rates for **all Companies** are downloaded directly from XE.com by pressing this button.

NOTE: This duplicates the FXMC download in manual mode. The Date field is ignored when this is used. Press OK at each prompt.

View Log File: This button appears if the FXMC module is installed. The FXMC download Log Files are stored in Home\TEXTOUT below the MAS90 folder. Set the Module Date at the CUMC Menu for the date of the Log file you want to see, enter the Exchange Rate Download utility, then press the button. It will be for the date showing in the title bar. *The button will not appear if no Log File exists for that date.*

Update All Companies:

When checking this box, the panel changes to this. It will perform an FXMC currency download for all Dates in the range. It forces All Currencies and All Companies to be selected. No existing rates will be overwritten.

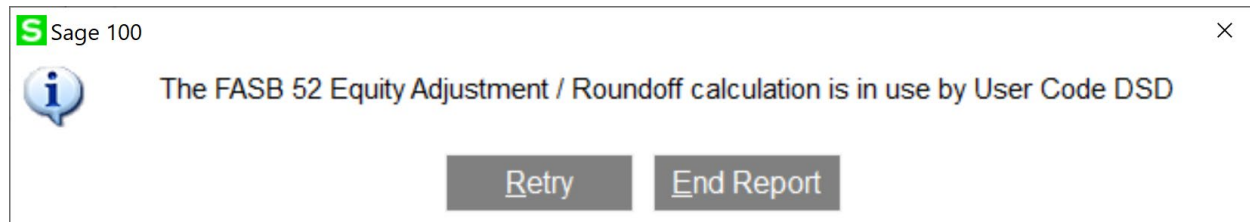
Select Field	Operand	Value
Currency Code	All	
Date	Equal to	9/4/2017

Select Field	Operand	Value
Currency Code	All	
Date	Range	9/1/2017 9/4/2017

Remove GLMC Financial Report Locks

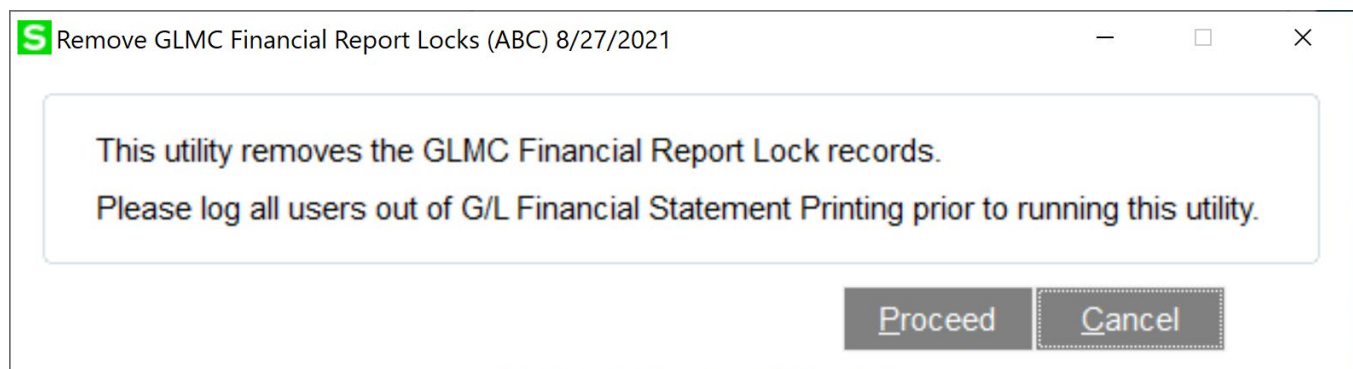
The G/L Financial Report, when printed in FASB 52 Currency, will create a report lock during processing (locked when the user selects Print/Preview, and then unlocked when the report processing is complete).

In the very rare chance that multiple users (or even the same user) are running the Financial Reports simultaneously, where the report processing happens at the same time, the 2nd user will receive this message prompt:



The user can select Retry repeatedly and once the lock is removed, the report will continue. If you select End Report button, the user will be taken back to the report selection panel.

In the very rare chance that the report errors in the middle of processing, and the report lock is "stuck", the user can run this 'Remove GLMC Financial Report Locks' utility to remove all report locks.



Section G: What's New?

Version 4.00

The CUMC Multi-Currency module has been separated from the General Ledger module as of Version 4.00. This is to allow the integrations of Multi-currency functionality in other modules without requiring the GLMC module.

Version 4.05 – 11/7/05

Budget Consolidation and Detail Date Range has been added as new features.

Version 4.10 – 1/2/07

The Consolidation program has been enhanced to post live postings to the Equity Adjustment Account for each out of balance G/L Detail Batch, if needed.

Versions 4.20 / 4.30 / 4.40 / 4.50/5.00 – 1/2/09

Two new features have been added:

- 1) Lookup/download of Exchange Rates in Currency Code Maintenance.
- 2) The IMFX utility is modified for Multi-Currency, and is found on the Utilities Menu.

Versions 4.50 / 5.00/5.10/5.20/5.30/6.00/7.00 – 12/1/16

Other features have been added or modified:

FXMC (as documented below).

Recalculate FASB52 has a range of dates available.

Multi-Company Consolidation can be updated for a range of dates.

In FXMC, provision is made to skip a Currency

Versions 4.50 / 5.00/5.10/5.20/5.30/6.00/7.00 /7.10 – 04/01/22

Significant features have been added or modified:

Currency rates source changed to XE.COM, see comments here:

Eliminated Buy/Sell rate differentiation.

Rates updated for the next business day based on GMT -12.

Number of decimal places in rates can be set between 4 and 8 (default is 5).

See the Appendix below for more information.

Section H: Appendices

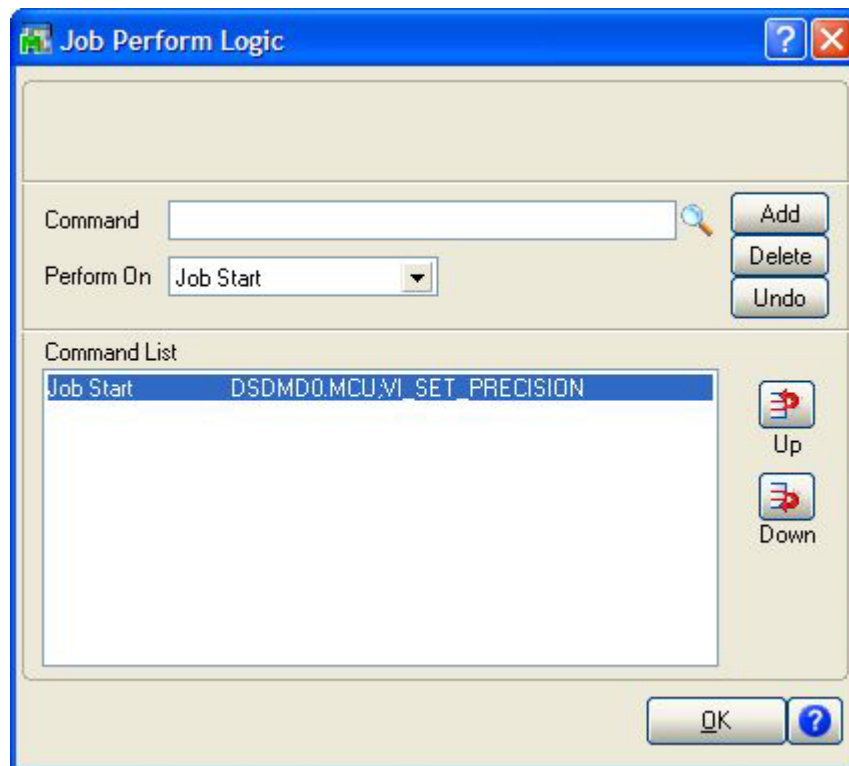
Changing the Base Currency Code

There is a hidden utility that can be used in special situations to change the previously assigned Base Currency. This is usually used at the initial setup of a Company, when the Base Currency is assigned but was chosen incorrectly. If this happens before any foreign transactions have been posted (i.e., in any Currency besides the Base Currency), then the utility can be used. **Please contact DSD to discuss if this is needed.**

Setting Decimal Precision to 8 decimal places on VI Imports

If you create a VI Import into a file that has a Currency Exchange Rate, and you are having problems with the Exchange Rate being rounded to only 2 decimal places, then you can add Perform Logic to set the Decimal Precision to 8 places. Here are the steps:

1. At the Configuration Tab in Import Job Maintenance, select the “Perform..” Button.
2. At the Command field, enter: DSDMD0.MCU;VI4_SET_PRECISION
3. Set the Perform On field to “Job Start”.



FXMC Installation

The FXMC Module subscription allows for automatic Exchange Rate Downloads to be configured in the Windows Task Scheduler, which will access the Exchange Rates from XE.com and install them into the Currency Rate Tables for all Companies. XE determines rates differently than other Currency Rate sites, so please look at the description of the differences [here](#).

NOTE: The FXMC subscription is installed as a separate enhancement, but is configured in the Multi-Currency Options. Until FXMC is installed, the panel below is not accessible. When CUMC is already installed, and if FXMC is added, select Multi-Currency Options. The conversion message will appear again. Click Next twice to perform the conversion).

NOTE: Some of the information here is used to configure the Windows Task Scheduler, which should be performed by an IT professional on the Sage 100 server.

Enable Auto Exchange Rate

Download: Uncheck this box if you do not want the installed Windows Scheduler program to be executed. If the Windows Scheduler for FXMC has not been configured on the server, checking this box will have no effect.

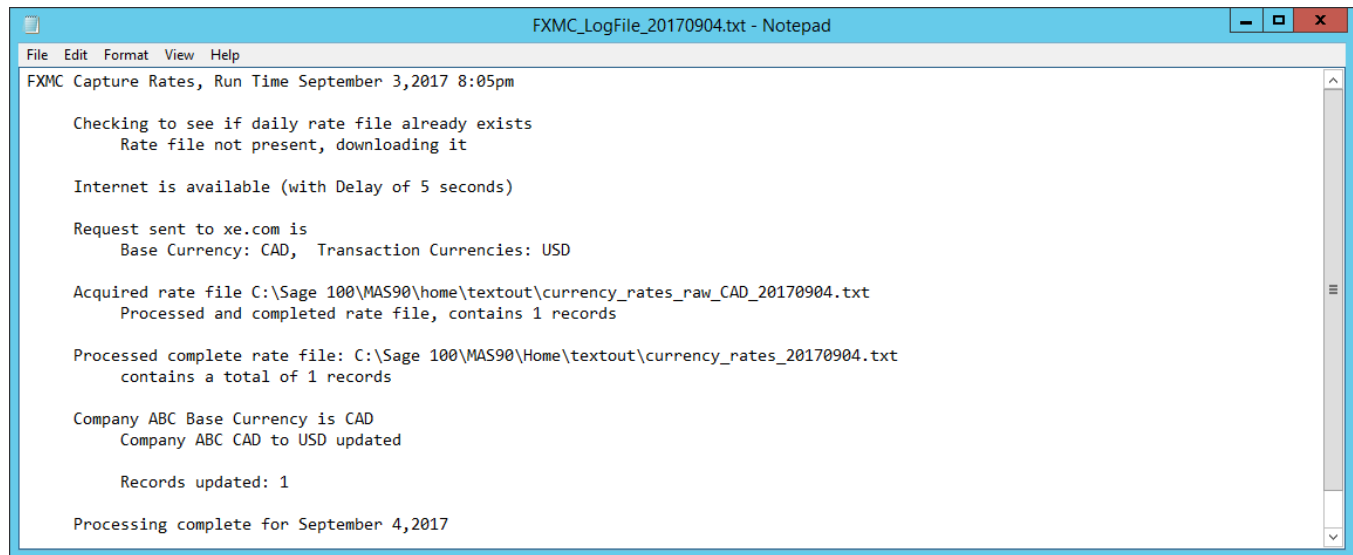
Override Existing Rate Entries:

This is normally left unchecked. This is rarely checked, and only if the wrong rates were entered for the current day.

Save Rate files after downloading: Check this box if you want to save the downloaded Rates files in the Folder indicated below. Otherwise, only the Log file remains in this location.

Folder to store Rates and Download Log: The default folder "...\\MAS90\\Home\\textout" is used to store the rate files when they are saved. A picture of the log file is below.

(Example Daily Log file created by FXMC)



```
FXMC_LogFile_20170904.txt - Notepad
File Edit Format View Help
FXMC Capture Rates, Run Time September 3,2017 8:05pm

Checking to see if daily rate file already exists
Rate file not present, downloading it

Internet is available (with Delay of 5 seconds)

Request sent to xe.com is
Base Currency: CAD, Transaction Currencies: USD

Acquired rate file C:\Sage 100\MAS90\home\textout\currency_rates_raw_CAD_20170904.txt
Processed and completed rate file, contains 1 records

Processed complete rate file: C:\Sage 100\MAS90\Home\textout\currency_rates_20170904.txt
contains a total of 1 records

Company ABC Base Currency is CAD
Company ABC CAD to USD updated

Records updated: 1

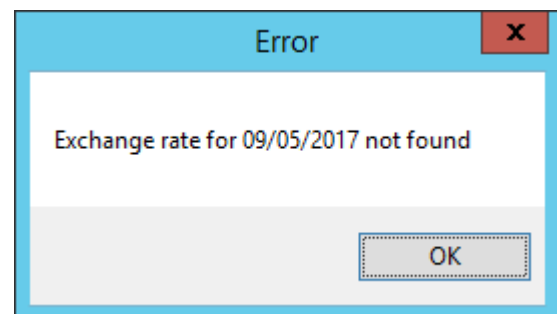
Processing complete for September 4,2017
```

Program/Script for Windows Scheduler: Your IT person who sets up the Windows Scheduler should use the Copy button to paste this command line to the same field name in Windows Scheduler. *(this is not optional)*

Add arguments for Windows Scheduler: Your IT person who sets up the Windows Scheduler should use the Copy button to paste this command line to the same field name in Windows Scheduler *(this is not optional)*.

Start in Directory for Windows Scheduler: Your IT person who sets up the Windows Scheduler should use the Copy button to paste this target directory to the same field name in Windows Scheduler *(this is not optional)*.

Verify daily rate download: Check this box if you want this warning to appear when the rate for the current Lookup Date is missing in the Currency File. If the rate lookup for the Invoice or Transaction Date is not on file, one can go to the Multi-Currency Utilities Menu, select Exchange Rate Download, and update the rates for the current day or any other day. ***Unless critical Exchange Rate daily accuracy is required, there's usually no need to check this box.***

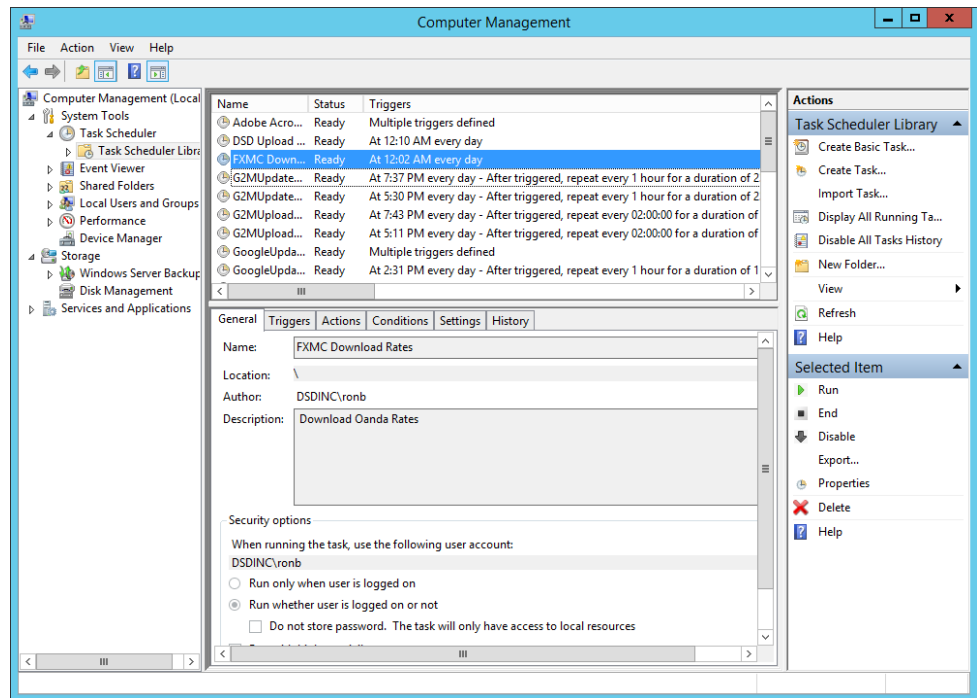


To test that FXMC is able to get to the Internet and grab the rate file, in the Exchange Rate Download utility you can press the "Download today's Rates for all Companies", which runs FXMC manually for the current day only, and updates any companies that have foreign Currencies maintained.

Configuring the Windows Task Scheduler

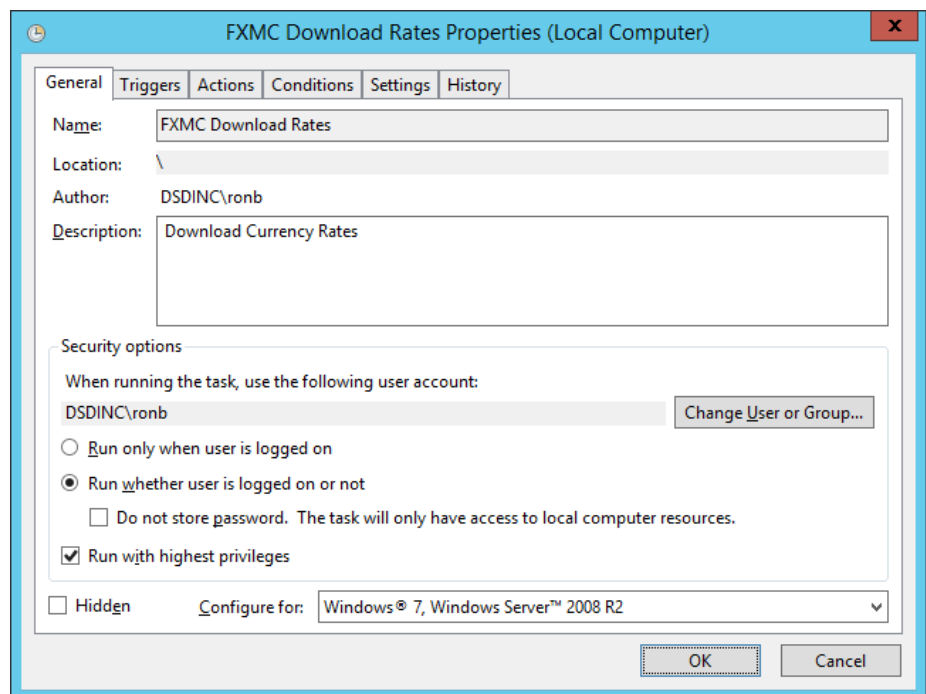
Setting up the Windows Task Scheduler: The Task Scheduler is found under the Windows Computer Management menu. (The configuration screens may look different than the below for different versions of Windows. These screen pictures are for Windows 7 and later, and Windows Server 2012).

In the Task Scheduler, select Create Task.

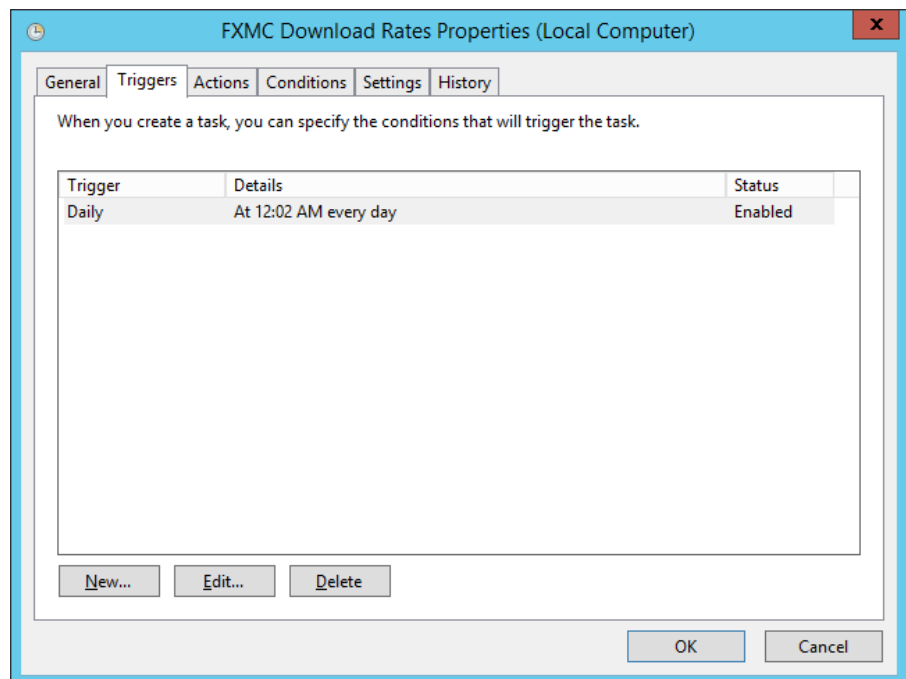


In the General tab, put an appropriate Title and Description.

Select “Run whether user is logged in or not” and “Run with highest privileges”



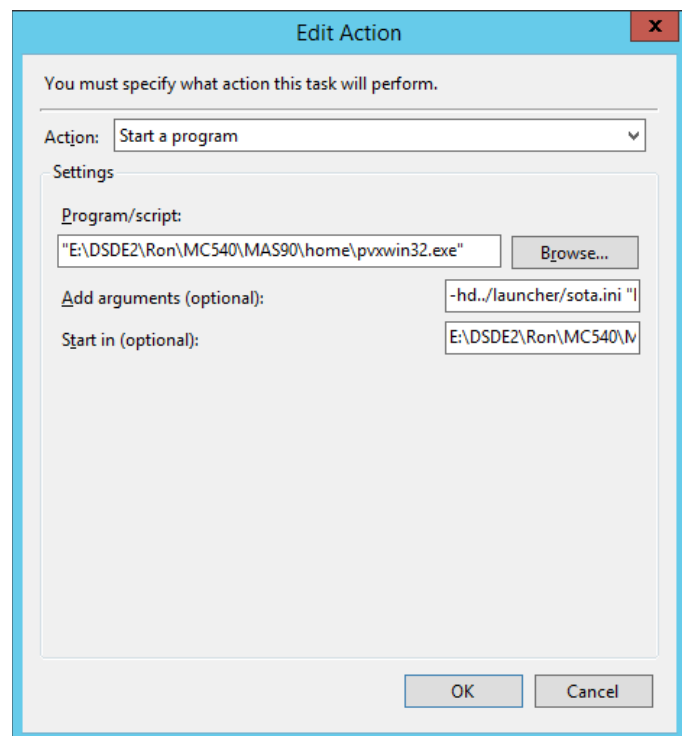
In the Triggers tab, set the schedule to be daily, that time will depend on your Company's world locations. (See ***"Changing the Date the Download captures"*** below)



In the Actions tab, the Action will be "Start a program". Copy and paste the three fields from the Multi-Currency Options screen for FXMC into the corresponding fields here.

NOTE: One should have the Options screen open to do the Copy for each parameter and then Paste into the Action screen

(no other tabs have any required changes)



The "arguments" fields should look similar to one of these below (the path to the \FX folder is based on the location of the Sage 100 installation, such as "C:\Sage\Sage 100 2017\MAS90"):

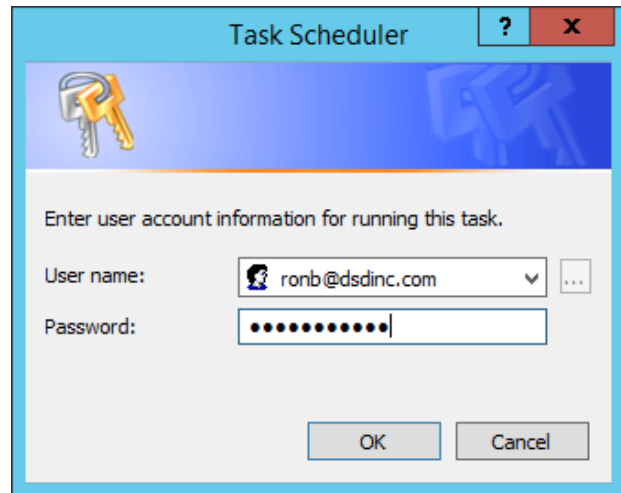
For Sage Standard or Advanced:

```
-hd../launcher/sota.ini "C:\Sage\Sage 100 2017\MAS90\FX\FX_GetCurrencyRates.M4P"
```

For Sage Premium: (where the "rb" is an admin user in Sage 100, "P@ssw0rd" is that user password, and "ABC" is a valid Company Code)

```
-hd../launcher/sota.ini "C:\Sage\Sage 100 2017\MAS90\SOA\Startup.m4p" -ARG DIRECT UIOFF rb  
P@ssw0rd ABC SYZCON FX_GetCurrencyRates.M4P
```

When you click OK, you must enter the account name and password for running this task. This ***must be the server administrator login on the local server, not the domain login.***



Other FXMC Features

Note on rates from XE.COM: XE doesn't maintain a daily rate on their currency conversion page. Their rates are updated continuously on this page, based on live mid-market rates. When doing a query, one receives the rate based on UTC (GMT) time at the moment of the query.

However, we lock in the rate for the business day starting just west of the International Date Line (Auckland, NZ), which is the first time zone of the next calendar day. So one will always see a small difference between the rate stored in Currency Code Maintenance and the one displayed on the XE site.

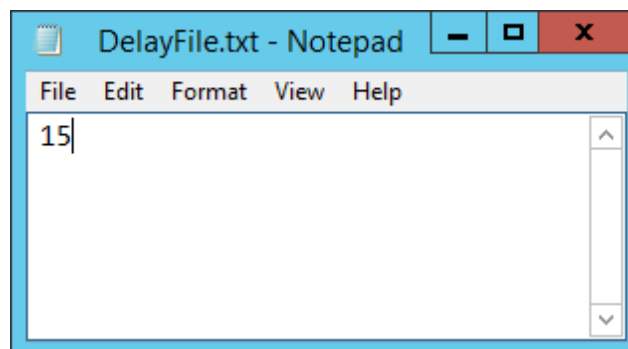
You now can obtain tomorrow's rates *much earlier* for the next business day. This is to accommodate companies that have a server in the US, but companies in the Far East who need the next day's rates. So FXMC now obtains tomorrow's rates for UTC+12 hours. So the Task Schedule can be set to run any time after UTC+12 to obtain the next day's rates. (See the section below on setting the Hour File).

Setting a Delay for Internet access timing: FXMC utilizes a Microsoft object (MSXML2.XMLHTTP) to test and determine if it can access the Internet.

On some servers, due to timing of overnight backups or other nightly updates, FXMC requires a "delay" in the query to MSXML2.XMLHTTP. The default is 2 seconds. If the FXMC log file is missing, or shows "Internet not available", then create the file below.

On the Sage 100 server, in the\MAS90\CX\bin folder, use Notepad to create a file named DelayFile.txt (upper/lower case doesn't matter).

Enter a number (such as 15), to create a 15 second delay in the Internet connection process.

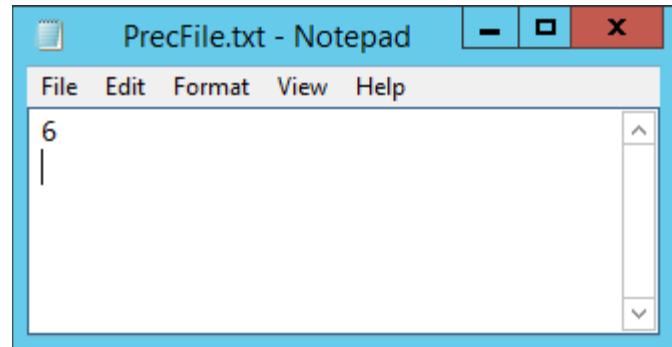


Monitor the FXMC Log Files in\MAS90\Home\Textout to determine if updates are working.

Changing the number of decimal places for rates: The default number of decimal places for rates is 5. This can be modified by creating the file below.

On the Sage 100 server, in the\MAS90\CX\bin folder, use Notepad to create a file named PrecFile.txt (upper/lower case doesn't matter).

Enter a number between 4 and 8 to override the default number of decimal places. Any other number is ignored.



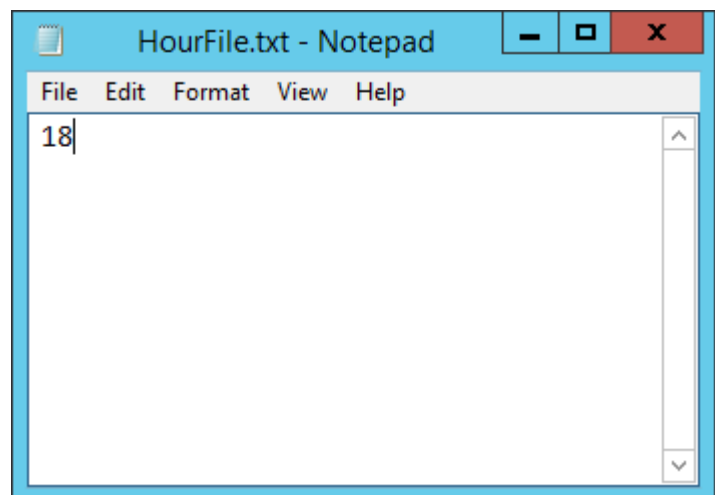
Changing the Time/Date the download captures: The rate for the *next business day* is now available by UTC (Universal Coordinated Time) + 12 hours, which is the time in Auckland, NZ of the new day. (UTC is the same as GMT, Greenwich Mean Time, at London, England). So, for example, if it's midnight in London, it's 12 hours later (or 12:00pm) the next day in Auckland, NZ.

FXMC now has different choices for what time the rates are downloaded **and** when the *next business day* selection is triggered, based upon which time zones your company(s) do business.

The default *next business day* in FXMC is 9:00pm (hour 21). Example: if your Sage 100 server is in Pacific Time zone, and you configure the Task Scheduler to run at 9:00pm Pacific, the rate file for the *next business day* is downloaded. So if you have companies in the Eastern time zone or in Europe, their rate file is already in place before the start of their business day, since it was captured before 8:00am 11 hours later.

But some have companies in India, or Singapore, or Sydney, who need their rates captured sooner. Example, if there is a need for the *next business day* at 8:00am Rate for India (12 hours later than Pacific), trigger FXMC sometime before 6:00pm Pacific.

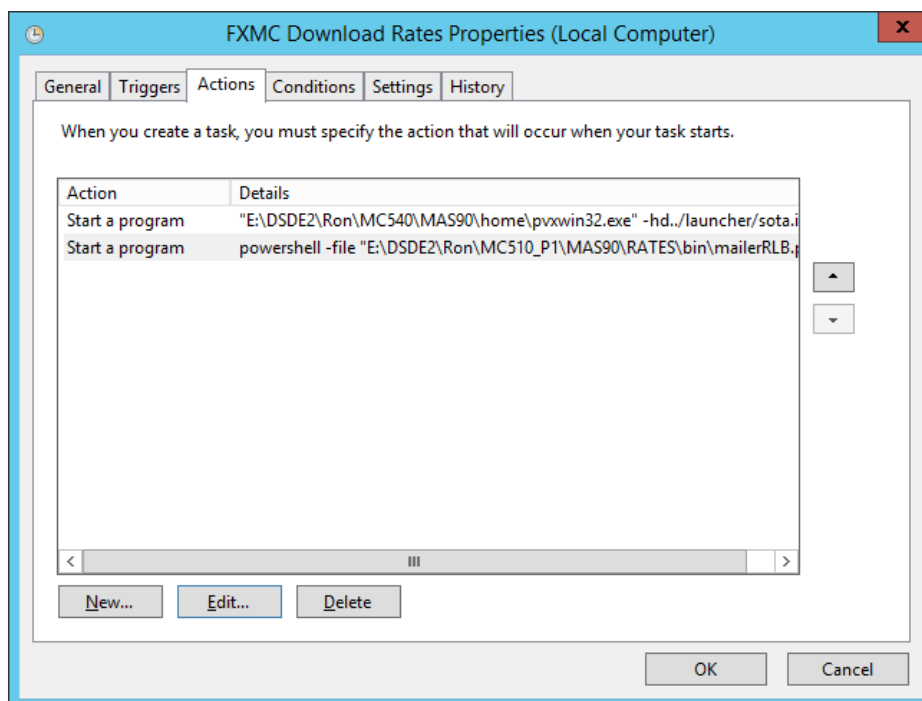
In the above example, set the Windows Task Scheduler for 6:00pm Pacific, and create the HourFile.txt with the number 18 in it. That tells FXMC that if the time it's running is 6:00pm or later local time, and to download the *next business day's* rates.



In the server, in the\MAS90\CX\bin folder, use Notepad to create a file named HourFile.txt (upper/lower case doesn't matter). Enter the number of the hour to trigger the *next business day* change.

Notification of Rate

Download: If you have Windows Powershell and are familiar with its programming, a second Action can be set up. This will send you a daily message with the FXMC Log File attached, so you can verify the FXMC process ran successfully.

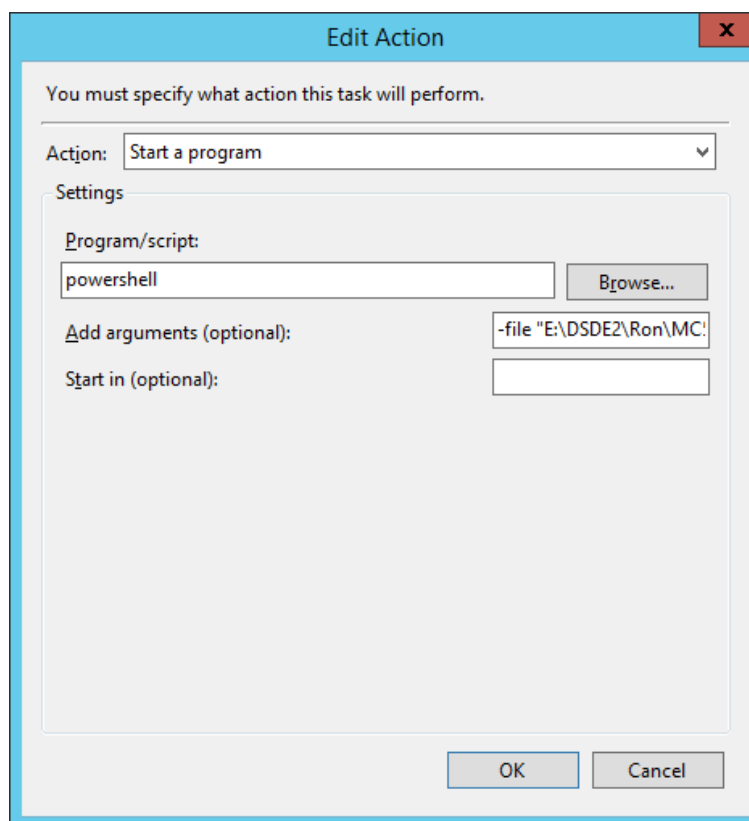


The -file argument will point to the Powershell file script you've edited with your parameters.

A template for the Powershell task is on the Sage 100 server in

....\MAS90\CX\bin\FXMC.ps1"

NOTE: you will need to edit the Powershell script for your system:



Excluding a Currency from FXMC update: A provision is now made for excluding any Currency in any Company from being updated by FXMC.

Add a checkbox UDF to the Currency Code Header file named UDF_NO_FXMC:

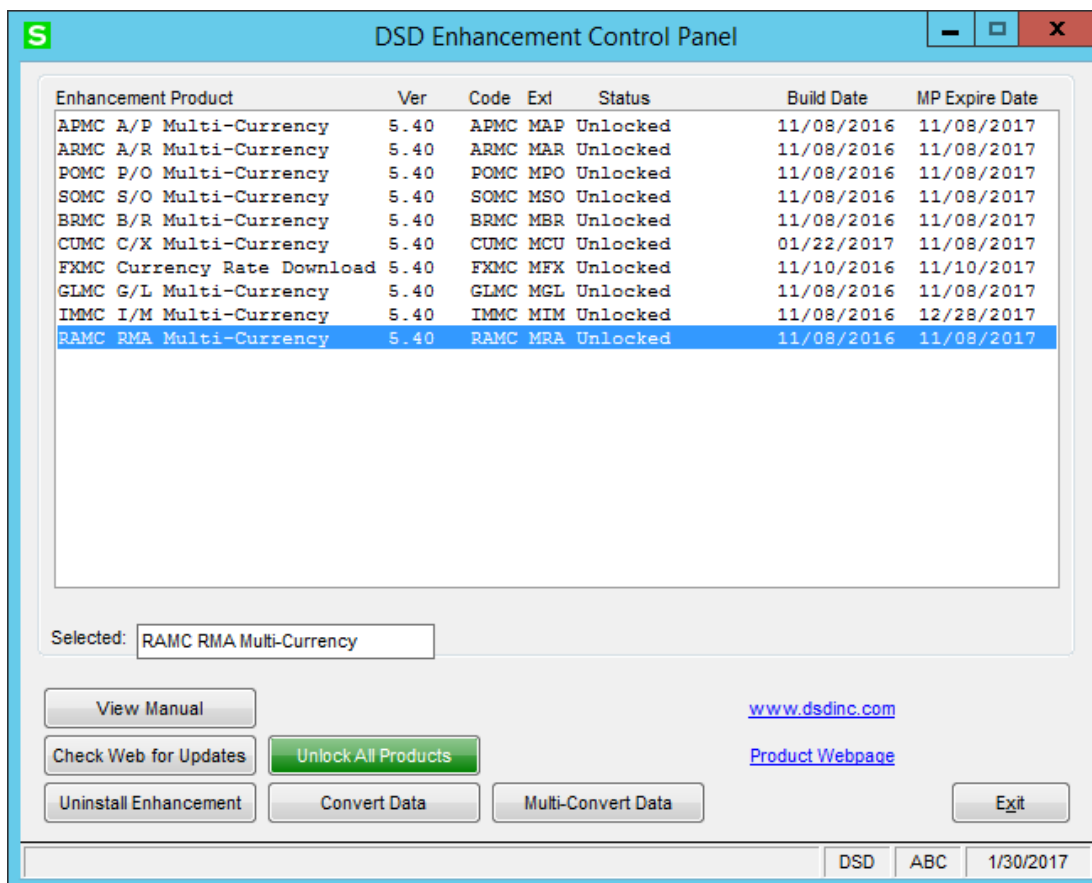
Modify the Currency Code Header to add the UDF:

A Currency with the box checked will NOT be updated by FXMC downloads. Rates still can be manually entered.

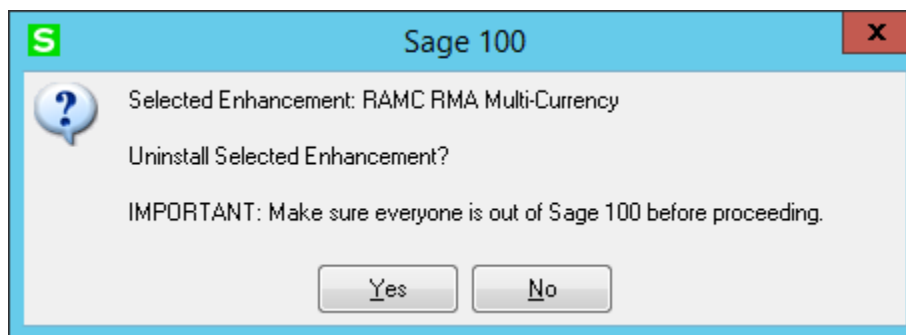
	Date	AR/SO Rate	AP/PO Rate	GL Rate	FASB 52 Rate
1	12/31/2016	20.69190000	20.69190000	20.68310000	20.68310000
2	12/30/2016	20.70440000	20.70440000	20.69710000	20.69710000
3	12/29/2016	20.76270000	20.76270000	20.75490000	20.75490000
4	12/28/2016	20.65990000	20.65990000	20.65005000	20.65005000
5	12/27/2016	20.63260000	20.63260000	20.60525000	20.60525000
6	12/26/2016	20.63260000	20.63260000	20.60525000	20.60525000
7	12/25/2016	20.63230000	20.63230000	20.60570000	20.60570000

Section I: Uninstall DSD Enhancements

A DSD Enhancements Uninstall Utility has been provided for the purposes of removing DSD Enhancements from your Sage 100 System. This utility may be accessed from the **DSD Enhancement Control Panel** menu option on the **Library Master / Utilities** menu.

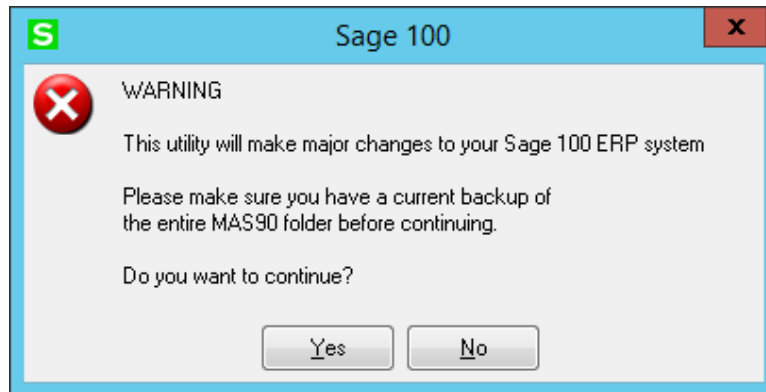


When accessing the **DSD Enhancement Control**, select the enhancement that you wish to Uninstall, and then select the **Uninstall Enhancement** button. The following message box will appear:



Select **No** to exit the Uninstall Process.
Select **Yes** to continue with the Uninstall Process.

The following message box will appear, to remind you that a complete backup of your entire Sage 100 system should be completed prior to uninstalling a DSD product.



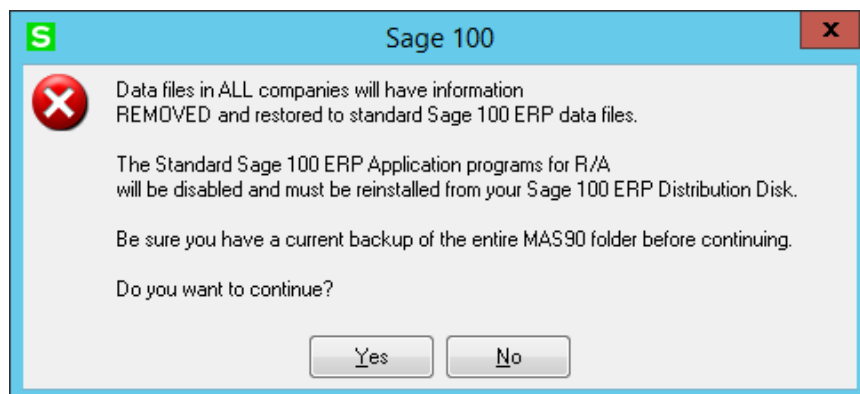
Select **No** to exit the Uninstall Process.
Select **Yes** to continue with the Uninstall Process.

After the Uninstall of the DSD Enhancement, you MUST reinstall certain standard Sage 100 modules, followed by reinstallation of Product Updates and Hot Fixes, if applicable.

A message box will appear, and will display which of those specific Sage 100 modules you must reinstall afterwards.

Select **No** to exit the Uninstall Process.
Select **Yes** to continue with the Uninstall Process.

The following message box will appear, displaying the final warning message.



Select **No** to exit the Uninstall Process.
Select **Yes** to continue with the Uninstall Process. At this point, the DSD Enhancement will be removed from the Sage 100 system.

After completion of the Uninstall, the following message box will appear. Select OK to continue.



Now that the Uninstall process is completed, you must:

- Reinstall the applicable standard Sage 100 modules
- Reinstall the latest Sage 100 Service Pack/Updates, if applicable.
- Reinstall any other DSD Enhancements or Developer products that are affected from the reinstallation of the standard Sage 100 module(s).