



DSD Business Systems

Sage 100 Enhancements

BM42

BOM 35 Option Categories

BM-1042

Version 7.40



Information in this document is subject to change without notice.

Copyright 1993-2025, DSD Business Systems All rights reserved.

35 Option Categories User's Manual
Version 7.40

18 September, 2025

DSD Business Systems
8787 Complex Drive
Suite 400
San Diego, CA 92123
858/550-5900 8:00am to 5:00pm PST
858/550-4900 Fax

Trademarks

ProvideX® is a Trademark of Sage Software.

Windows is a trademark of Microsoft Corporation.

Sage 100® is a registered trademark of Sage Software.

PXPlus® is a registered trademark of PVX Plus technologies

All other product names and brand names are service marks, and/or trademarks or registered trademarks of their respective companies.

This documentation and the software described herein, is prepared and published under license. Sage Software has not tested or verified either the software or any representation in this documentation regarding the software. Sage Software does not make any warranty with respect to either this documentation or the software described herein, and specifically disclaims any warranty, express or implied, with respect hereto, including the warranties of fitness for a particular purpose and merchantability.

Table of Contents

| | |
|---|-----------|
| SECTION A: INTRODUCTION | 5 |
| WEB RESOURCES | 5 |
| SUPPORT | 5 |
| 35 OPTION CATEGORIES FEATURES | 6 |
| SECTION B: GETTING STARTED | 7 |
| REQUIRED LEVELS | 7 |
| INSTALLATION | 7 |
| DSD ENHANCEMENT CONTROL PANEL | 9 |
| SECTION C: SETUP | 11 |
| SECTION D: SYSTEM OPERATIONS | 12 |
| BILL OF MATERIALS MAINTENANCE | 12 |
| OPTION INTERACTION MAINTENANCE | 13 |
| PRODUCTION ENTRY | 15 |
| PICKING SHEET PRINTING | 15 |
| BOM REPORTS | 15 |
| SALES ORDER ENTRY AND SALES ORDER INVOICE ENTRY | 17 |
| PRODUCTION MANAGEMENT WORK TICKET ENTRY | 18 |
| SECTION E: UNINSTALL DSD ENHANCEMENTS | 19 |

Section A: Introduction

This manual contains a description and instructions for this DSD product. Operating instructions are included for the features added by this product to Sage 100. For instructions on using Sage 100, refer to the appropriate Sage 100 manual, or call your Sage 100 reseller. DSD Business Systems offers excellent Sage 100 support, at an hourly rate.

Web Resources

DSD web site: <http://www.dsdinc.com>

The Enhancement page contains:

- Current Release Schedule*
- Purchasing Information*
- Installation Instructions*
- Product Support*
- Enhancement Links*

BM42 35 Option Categories:

<http://www.dsdinc.com/enhancement/35-option-categories-2/>

The product web page contains:

- Product Description*
- Web Links*
- Current Product Version Table*
- Product Installation File Download*
- Product Manual in .pdf Format*
- Revision History*
- FAQ*

Support

DSD provides product support through Sage 100 resellers. Support is provided for the current version. Older versions are supported at an hourly rate. DSD's telephone number is **858-550-5900**. Fax: **858-550-4900**.

For a hard error, where the program displays an error dialog, report:

- Error number.*
- Program name.*
- Line number.*
- Program version.*
- Exact sequence that caused the error, including menus and menu selections.*

Other pertinent information.

If leaving a message or faxing, please include:

Your name.

Your phone number (and fax if applicable) and extension.

It is possible to be unable to duplicate a problem, because of data corruption or because we have not exactly duplicated a particular operating environment. In such circumstances, we can only continue to try to fix the problem if we can either access the system with Symantec PCAnywhere or by some other means access or duplicate the system.

35 Option Categories Features

This DSD Extended Solution to the Sage 100 Bill of Materials module adds Categories A - Z and expands the Options Codes list to allow entry of the 35 categories.

Section B: Getting Started



- **If you reinstall or upgrade one of the Sage 100 modules listed in the following table, you must also reinstall this Enhancement.**
- Enhancements from different Sage Developers are generally not designed to work together. If installed together, problems are likely to occur.
- **Check with DSD before installing more than one Enhancement.**

Required Levels

| Sage 100 Module | Module Required | Required Level |
|-----------------|-----------------|----------------|
| B/M | Y | 7.40 |

Installation

1. **Back-up:** Exit all Sage 100 sessions. Back-up existing Sage 100 data.
2. **Check Levels:** Sage 100 module levels **must match** those listed above.
3. **Run Enhancement Setup Program:** Save the executable installation program (sent to you or downloaded from our website) in a convenient location on the Sage 100 server. Launch the program from Windows Explorer or by selecting Start/Run, and then browse for the file in the location you saved it. Follow on-screen instructions.
4. **Send your Sage Serial Number to your DSD Representative:** Send your Sage Serial Number to your DSD representative in order for us to send you back the encrypted keys to unlock your system. This serial number can be found in Library Master\Setup\System Configuration, Tab 3. Registration as Serial Number.
5. **Re-Start Sage 100:** Sage 100 will be updated.
6. **Unlock the Enhancement:** DSD Enhancements must be unlocked to run. When any part of the Enhancement is run for the first time, the **DSD Enhancement License Agreement and Activation** window will appear. Follow the steps shown on that window. *You can click the Help button for more detailed instructions.*

Note: On the next page is a screenshot of the DSD Enhancement License Agreement and Activation window.

After accepting the License Agreement, you can then select the type of unlocking that you'd prefer. The choices are File, Web, Demo and Manual Entry.

File Unlock: After receiving your encrypted serial number key file from DSD, and placing that file in the MAS90/SOA directory, selecting this option will unlock all products keys contained in the file. This means you can unlock all enhancements at once using this option.

Web Unlock: If the system that is running the DSD Enhancement *has web access* and you *have sent DSD your Sage Serial number*, you can unlock the Enhancement without assistance using Web Unlock. When this option is selected, the program will attempt to download encrypted serial number key file from DSD *and then proceed to unlock all enhancements contained in the file*.

- *The Sage 100 system that is being used must have web access for this option to be effective.*
- *You can send your Sage Serial Number to your DSD Enhancements sales representative.*

Demo Unlock: If a Demo mode is available for the Enhancement you're running, you will be able to Demo unlock the product without assistance from DSD for demo purposes.

- *Creating a Demo Unlock is a good way to temporarily unlock DSD Enhancements off-hours, if you do not have web or email access. Later, you can unlock the product fully, during business hours.*

Manual Entry Unlock: If you want to unlock a single enhancement using a single encrypted key, you can select this option and enter the 64 character key you receive from DSD by copy and paste.

Note: You can also unlock a DSD Enhancement through the **DSD Enhancement Control Panel** found on the Library Master Utilities Menu. Then, select the Enhancement with your mouse from the list of Enhancements and click the **Unlock Product** button on the right side of the window.

7. **Convert Data:** After unlocking, the DSD Conversion Wizard will appear. Follow on-screen instructions to complete data conversion. *You can exit the conversion program without converting data. The Enhancement will not proceed, however, until data is converted. If you enter an enhanced program and data has not been converted, the conversion program will run again.*

DSD Enhancement Control Panel

Starting with version 3.61, all DSD Enhancement products include DSD's Enhancement Control Panel. The **DSD Enhancement Control Panel is accessed from the Library Master Utilities menu.**

The DSD Enhancement Control Panel is a simple to use yet powerful system to help maintain DSD Enhancements installed on a Sage 100 system. To use it, select an Enhancement product from the list on the window and then click the button, on the right side of the window, which corresponds with the desired task.

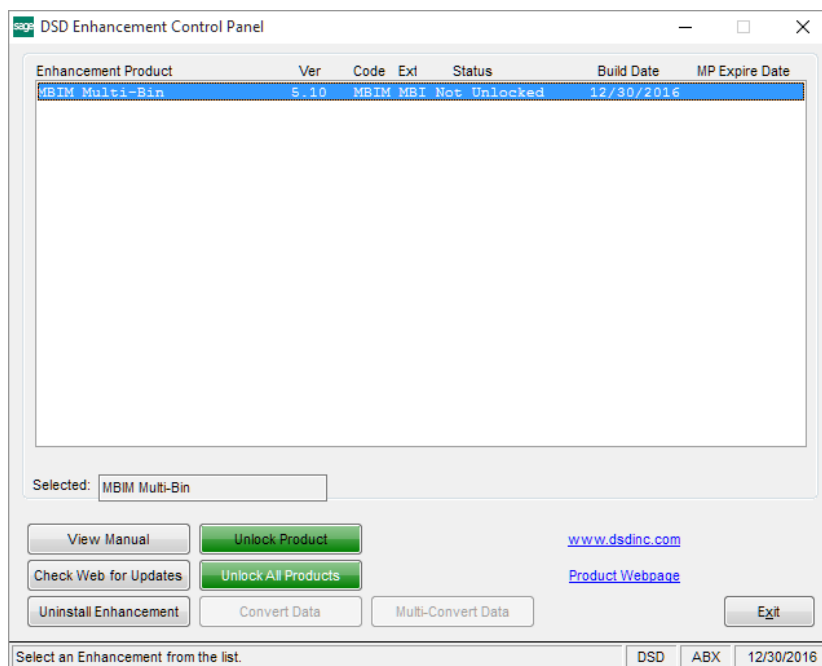
View Manual: This button will display the product manual for the selected Enhancement using Adobe Acrobat. For this to be possible, the PDF file for the corresponding manual must be in the "MAS90/PDF" folder in the Sage 100 system. If the file is not present, and the system has web access, the correct PDF file will be automatically downloaded from the DSD website, put into the "MAS90/PDF" folder and then displayed.

Check the Web for Updates: This button will check the DSD website to see what the current build is the selected Enhancement and alert the user if a later version is available. *This requires an internet connection on the Sage 100 system.*

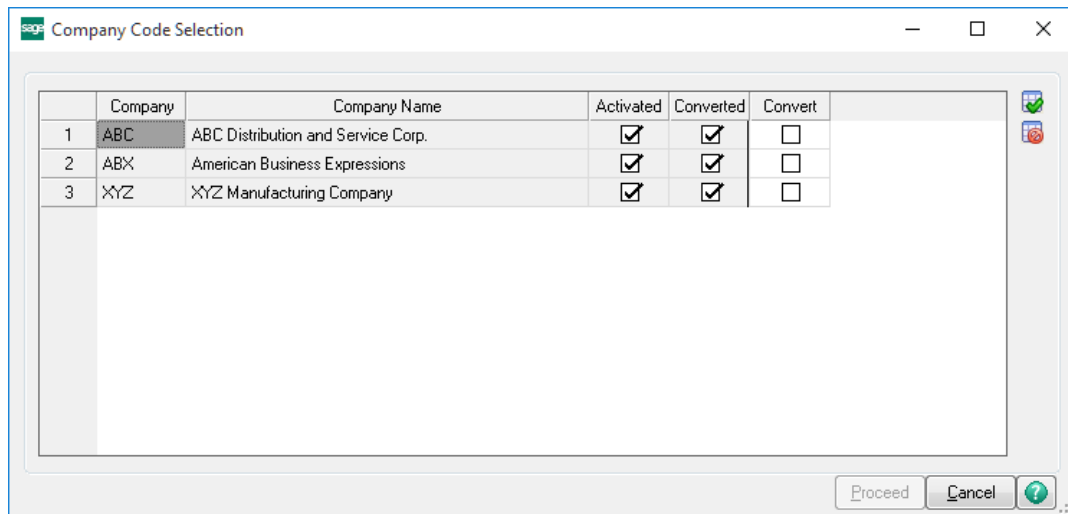
Unlock Product: This will cause the DSD Enhancement License Agreement and Activation window to appear. Using this window is described on the previous page. *This button is disabled if the selected Enhancement is already unlocked or if unlocking is not required.*

Unlock All Products: This will cause the DSD Enhancement All License Agreement and Activation window to appear. This window is similar to the one described on the previous page, but has only web and file as options to unlock. *This button is never disabled.*

Convert Data: After verification, the selected Enhancement's data conversion program will run. Data conversion is non-destructive, and may be triggered any number of times. Sometimes this is required to fix data records imported or updated from a non-enhancement installation.



Multi-Convert Data: Multiple Companies can be converted at the same time for a given Enhancement. *(If you have a large number of Companies to convert, please do in batches of 20 or fewer due to memory limitations.)*



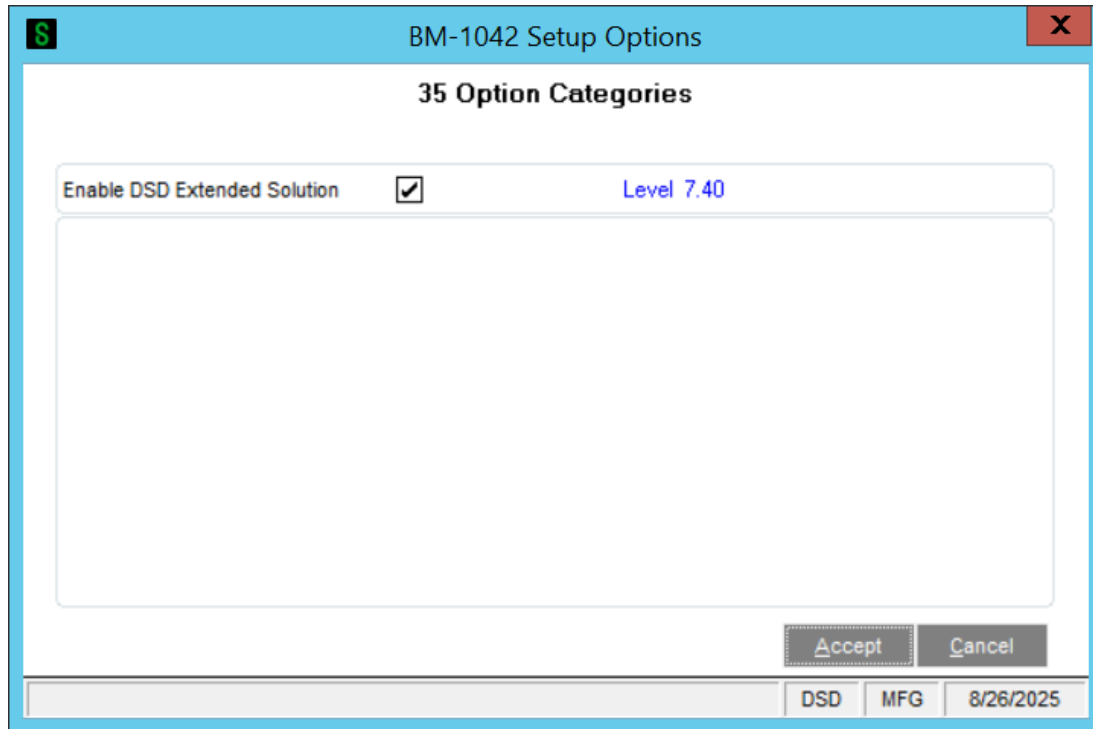
Help: The Help button, located at the bottom right of the window, opens an HTML help file.

Get Adobe Acrobat: Opens the Adobe Acrobat website to the page where Acrobat can be downloaded and installed.

Uninstall Enhancement If this option is available, then selecting this button will start the un-install process, removing the enhancement from the system. (for more information see [Uninstall DSD Enhancements](#))

Section C: Setup

Upon completion of software installation, you will need to access DSD Extended Solutions Setup from the Bill of Materials Setup menu. Select this part number and the Setup screen for this Extended Solution will appear. Check the 'Enable DSD Extended Solution' box to activate this Extended Solution.



You should visit this Setup screen after each upgrade or reinstallation of this Extended Solution.

Section D: System Operations

This Extended Solution adds 26 more Option Categories to Bill of Materials: A-Z. These additional Option Categories will be functional in the Bill of Materials and Sales Order modules, and only as described below. These additional option categories will be defined to all data dictionaries.

Bill Of Materials Maintenance

Bill Of Materials Maintenance will be modified with a new button, ‘Categories A to Z’ . It will only be available if you have checked the ‘Bill Has Options’ box.

Bill of Materials Maintenance (PMZ) 7/1/2025

Bill NumberDSKTP-00100

Revision000

Bill TypeStandard

Description 1DESKTOP COMPUTER SYSTEM

Description 2

Copy From...

More...

1. Header

2. Lines

Drawing Number

Drawing Revision

Template No. DESKTOP

Template Revision000

Current Revision000

Date Last Used5/31/2025

Maximum Lot Size100

Yield Percentage98.000%

Print Components

Bill Has Options☒

Option Categories

| | | | |
|---|-------------------------------|-------------------------------------|----------|
| 1 | MAIN DISK DRIVE ASSEMBLY | <input checked="" type="checkbox"/> | Required |
| 2 | AUXILIARY DISK DRIVE ASSEMBLY | <input type="checkbox"/> | Required |
| 3 | SECOND AUXILIARY DISK DRIVE | <input type="checkbox"/> | Required |
| 4 | HIGH SPEED CPU | <input type="checkbox"/> | Required |
| 5 | MEMORY PACKAGE | <input type="checkbox"/> | Required |
| 6 | COLOR DISPLAY PACKAGE | <input type="checkbox"/> | Required |
| 7 | Upgrade Package | <input type="checkbox"/> | Required |
| 8 | Premium Color Package | <input type="checkbox"/> | Required |
| 9 | Speaker Upgrade | <input type="checkbox"/> | Required |

Categories A to Z

Accept

Cancel

Delete

When you click this button, a new window with ‘Option Categories A to Z’ will be displayed. These categories will have the same functionality that is currently present for Categories ‘1’ through ‘9.’

S

Option Categories A to Z

?

×

| | | | | | |
|---|------------|---|---|--|--------------------------------|
| A | USB Ports | <input checked="" type="checkbox"/> Req'd | N | | <input type="checkbox"/> Req'd |
| B | USB-C Port | <input type="checkbox"/> Req'd | O | | <input type="checkbox"/> Req'd |
| C | | <input type="checkbox"/> Req'd | P | | <input type="checkbox"/> Req'd |
| D | | <input type="checkbox"/> Req'd | Q | | <input type="checkbox"/> Req'd |
| E | | <input type="checkbox"/> Req'd | R | | <input type="checkbox"/> Req'd |
| F | | <input type="checkbox"/> Req'd | S | | <input type="checkbox"/> Req'd |
| G | | <input type="checkbox"/> Req'd | T | | <input type="checkbox"/> Req'd |
| H | | <input type="checkbox"/> Req'd | U | | <input type="checkbox"/> Req'd |
| I | | <input type="checkbox"/> Req'd | V | | <input type="checkbox"/> Req'd |
| J | | <input type="checkbox"/> Req'd | W | | <input type="checkbox"/> Req'd |
| K | | <input type="checkbox"/> Req'd | X | | <input type="checkbox"/> Req'd |
| L | | <input type="checkbox"/> Req'd | Y | | <input type="checkbox"/> Req'd |
| M | | <input type="checkbox"/> Req'd | Z | | <input type="checkbox"/> Req'd |

OK

Option Interaction Maintenance

The Option Selection tab in Option Interaction Maintenance allows for entry of the new Categories and will display all of the selected Option Codes in an expanded Option Codes selected field.

Option Selection

Bill Number: DSKTP-00100 DESKTOP COMPUTER SYSTEM

Revision: 000

| | Option Category | Required | Option | Option Description |
|----|-------------------------------|-------------------------------------|--------------------------|--------------------|
| 1 | MAIN DISK DRIVE ASSEMBLY | <input checked="" type="checkbox"/> | <input type="checkbox"/> | |
| 2 | AUXILIARY DISK DRIVE ASSEMBLY | <input type="checkbox"/> | | |
| 3 | SECOND AUXILIARY DISK DRIVE | <input type="checkbox"/> | | |
| 4 | HIGH SPEED CPU | <input type="checkbox"/> | | |
| 5 | MEMORY PACKAGE | <input type="checkbox"/> | | |
| 6 | COLOR DISPLAY PACKAGE | <input type="checkbox"/> | | |
| 7 | Upgrade Package | <input type="checkbox"/> | | |
| 8 | Premium Color Package | <input type="checkbox"/> | | |
| 9 | Speaker Upgrade | <input type="checkbox"/> | | |
| 10 | USB Ports | <input checked="" type="checkbox"/> | | |
| 11 | USB-C Port | <input type="checkbox"/> | | |

OK Cancel ?

Option Interaction Maintenance

Option Code: _____

Bill Number: DSKTP-00100

Revision: 000

1. Header 2. Lines

Option Description 1: _____

Option Description 2: _____

Option Description 3: _____

Step No.: _____

Accept Cancel Delete ?

Production Entry

Production Entry will prompt for these additional Option Categories. Once Options have been defined, they will display in the Option Code field. This field will be expanded to hold 102 characters (34, 2 character codes plus 34 commas). They will print on the Production Entry Register.

Production Entry (PMZ) 7/1/2025

Production Number: 0000176

Production Date: 7/1/2025

Bill Number: DSKTP-00100

Bill Type: Standard

Revision: 000

Option Code:

Quantity: .00

Unit of Measure: EACH

Effective Date: 7/1/2025

Parent Warehouse: 000 MAIN WAREHOUSE

Component Warehouse: 000 MAIN WAREHOUSE

Explode: ☐

Buttons: Accept, Cancel, Delete

Picking Sheet Printing

Picking Sheet Printing will prompt for these additional Option Categories and will display the expanded Option Code field described above. The additional selected Option Codes will print on the Crystal Picking Sheet Form.

BOM Reports

The following Reports will use the new Option Categories:

- Single Level Bill of Materials*
- Indented Bill of Materials*
- Summarized Bill of Materials*
- Component Requirement**
- Gross Requirements**
- Costed Bill of Materials
- Production Register
- Production History Report*
- Single Where Used Report

- Indented Where Used Report
- * These reports print an Option Recap at the top of the report
- ** These reports allow for entry of Options on the report selection screen

NOTE: Only Options 1-9 and A-F are added to the CRW Form for the above reports. If you need to have more added to these forms, please contact DSD Business Systems.

EXAMPLE:

Single Level Bill of Materials

| Single-Level Bill of Materials Report With Phantom Blow Through | | | | | | | | | | | | |
|--|---------------|--------|-------------------|-----------------|-------------------------------|-------------------------------|----------|---------------------------|-------------|---------------------------|-------------|-------------|
| Production Management Company (PMZ) | | | | | | | | | | | | |
| Bill Number | Revision | Option | Type | Unit of Measure | Description | | | | | | | |
| DSKTP-00100 | 000 (CURRENT) | BASE | STD | EACH | DESKTOP COMPUTER SYSTEM | | | | | | | |
| Option Categories | | | | | | | | | | | | |
| Required | | | | | | | | | | | | |
| | | 1 | | | MAIN DISK DRIVE ASSEMBLY | | | | | | | |
| | | 2 | | | AUXILIARY DISK DRIVE ASSEMBLY | | | | | | | |
| | | 3 | | | SECOND AUXILIARY DISK DRIVE | | | | | | | |
| | | 4 | | | HIGH SPEED CPU | | | | | | | |
| | | 5 | | | MEMORY PACKAGE | | | | | | | |
| | | 6 | | | COLOR DISPLAY PACKAGE | | | | | | | |
| | | 7 | | | Upgrade Package | | | | | | | |
| | | 8 | | | Premium Color Package | | | | | | | |
| | | 9 | | | Speaker Upgrade | | | | | | | |
| Required | | | | | | | | | | | | |
| | | 10 | | | USB Ports | | | | | | | |
| | | 11 | | | USB-C Port | | | | | | | |
| Last Used: 5/31/2025 Yield Percentage: 98.000 % Max Lot Size: 100 | | | | | | | | | | | | |
| Routing: DESKTOP | | | | | | | | | | | | |
| Component Item Code | Revision | Type | Quantity Per Bill | Unit of Measure | Scrap Percent | Description | Add Date | Engineering Change Number | Delete Date | Engineering Change Number | Find Number | Step Number |
| CABIN-01000-H | * | STD | 1.00 | EACH | 0.000 % | CABINET MODEL 1000 | | | | | | |
| BOARD-04230-16 | * | STD | 1.00 | EACH | 1.000 % | 80486DX2 MOTHERBOARD 50MHZ | | | | | | 0000 |
| MEMORY-00080 | * | STD | 2.00 | EACH | 0.000 % | MEMORY CHIP SET - 1 MEG | | | | | | 0010 |
| VGAHW-04692 | | | 1.00 | EACH | 0.000 % | VGA MONOCHROME MONITOR | | | | | | 0010 |
| VGAH-02964 | | | 1.00 | EACH | 0.800 % | SUPER VGA CARD 16 BIT 810K | | | | | | 0090 |
| KEYBD-00102 | | | 1.00 | EACH | 0.200 % | KEYBOARD - AT STYLE (102 KEY) | | | | | | 0020 |
| THIS PROJECT IN BETA TEST - DEFECTIVE PARTS | | | | | | | | | | | | |
| TO GO TO JIM IN ENGINEERING DEPARTMENT FOR | | | | | | | | | | | | |
| REWORK. | | | | | | | | | | | | |
| Bill Number | Revision | Option | Type | Unit of Measure | Description | | | | | | | |
| DSKTP-00100 | 000 (CURRENT) | 1-01 | STD | EACH | | | | | | | | |
| Last Used: 5/21/2025 Yield Percentage: 98.000 % Max Lot Size: 100 Price: 298.99 | | | | | | | | | | | | |
| Routing: DD ASSY | | | | | | | | | | | | |
| Component Item Code | Revision | Type | Quantity Per Bill | Unit of Measure | Scrap Percent | Description | Add Date | Engineering Change Number | Delete Date | Engineering Change Number | Find Number | Step Number |

Single Level Component Requirement

Component Requirement Report (PMZ) 7/1/2025

Report Setting

STANDARD

Save

Description

Component Requirement Report

Setting Options

Type

Public

Print Report Settings

☐

Number of Copies

1

Default Report

☒

Three Hole Punch

☐

Collated

☒

Print Shortages Only

☐

Round Extended Quantity for Integer Units of Measure

☐

Quick Row

1

Bill Number

Revision

Bill Options

Bill Format

Quantity

1

DSKTP-00100

000

Single

1.00

2

.00

Description 1

DESKTOP COMPUTER SYSTEM

Description 2

Current Revision

☒

Component Whse

000

Microsoft Print to PDF

Keep Window Open After

Print

☐

Preview

☐

Print

Preview

Setup

Single-Level Component Requirement Report

Options <01,01,01,04,> As of 1/25/2011, Warehouse: 000

ABC Distribution and Service Corp. (ABC)

| Bill Number | Option | Type | Description | Unit of Measure | Quantity Required | | |
|---------------------|--------|-------------------------|--------------------|-------------------|-------------------|--------------------|----------------|
| A-1000 | BASE | Standard | Ashley Super Coupe | EACH | 1.00 | | |
| | | | Custom Design | | | | |
| | 1-01 | | Ashley Super Coupe | Color | | | |
| | | | Custom Design | | | | |
| | 2-01 | | Ashley Super Coupe | Engine | | | |
| | | | Custom Design | | | | |
| | 3-01 | | Ashley Super Coupe | Wheel | | | |
| | | | Custom Design | | | | |
| | 4-04 | | Ashley Super Coupe | Tire | | | |
| | | | Custom Design | | | | |
| | 01 | | Ashley Super Coupe | Warranty | | | |
| | | | Custom Design | | | | |
| Component Item Code | Type | Description | Unit of Measure | Quantity Per Bill | Quantity Required | Quantity Available | Quantity Short |
| 2568-3-25 | | DESK FILE 3 1/2" CAP 25 | EACH | 9.00 | 9.00 | 925.00 | |

Sales Order Entry and Sales Order Invoice Entry

Order Entry and Sales Order Invoice Entry will be modified to prompt for the additional Option Categories in a manner consistent with what was described for Production Entry.

Option Selection

Bill Number: DSKTP-00100 DESKTOP COMPUTER SYSTEM

Revision: 000

| | Option Category | Required | Option | Option Description |
|----|-------------------------------|-------------------------------------|--------|------------------------|
| 1 | MAIN DISK DRIVE ASSEMBLY | <input checked="" type="checkbox"/> | 04 | 100 GIGABYTE HARD DISK |
| 2 | AUXILIARY DISK DRIVE ASSEMBLY | <input type="checkbox"/> | | |
| 3 | SECOND AUXILIARY DISK DRIVE | <input type="checkbox"/> | | |
| 4 | HIGH SPEED CPU | <input type="checkbox"/> | | |
| 5 | MEMORY PACKAGE | <input type="checkbox"/> | | |
| 6 | COLOR DISPLAY PACKAGE | <input type="checkbox"/> | | |
| 7 | Upgrade Package | <input type="checkbox"/> | | |
| 8 | Premium Color Package | <input type="checkbox"/> | | |
| 9 | Speaker Upgrade | <input type="checkbox"/> | | |
| 10 | USB Ports | <input checked="" type="checkbox"/> | | |
| 11 | USB-C Port | <input type="checkbox"/> | | |

OK ?

Production Management Work Ticket Entry

Work Ticket Entry will be modified to prompt for the additional Option Categories in a manner consistent with what was described for Production Entry.

S Option Selection

Bill Number: DSKTP-00100 DESKTOP COMPUTER SYSTEM

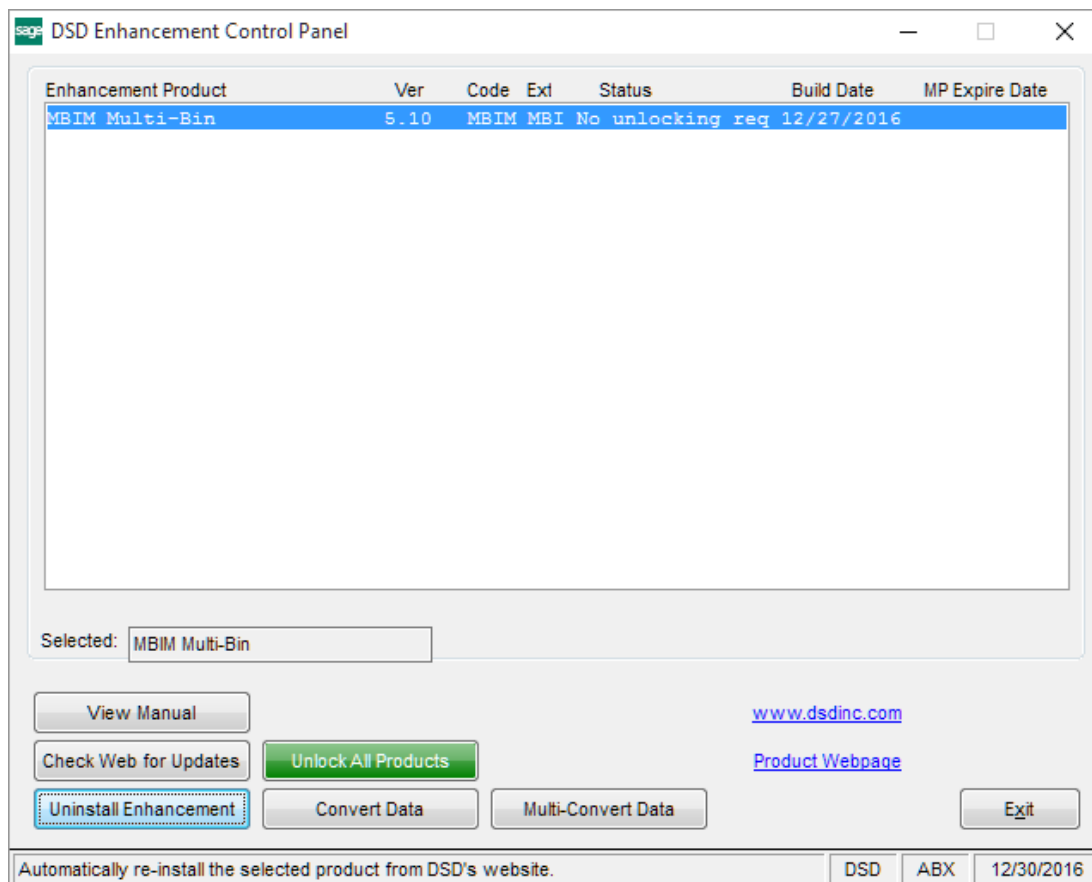
Revision: 000

| | Option Category | Required | Option | Option Description |
|----|-------------------------------|-------------------------------------|--------|------------------------|
| 1 | MAIN DISK DRIVE ASSEMBLY | <input checked="" type="checkbox"/> | 04 | 100 GIGABYTE HARD DISK |
| 2 | AUXILIARY DISK DRIVE ASSEMBLY | <input type="checkbox"/> | | |
| 3 | SECOND AUXILIARY DISK DRIVE | <input type="checkbox"/> | | |
| 4 | HIGH SPEED CPU | <input type="checkbox"/> | | |
| 5 | MEMORY PACKAGE | <input type="checkbox"/> | | |
| 6 | COLOR DISPLAY PACKAGE | <input type="checkbox"/> | | |
| 7 | Upgrade Package | <input type="checkbox"/> | | |
| 8 | Premium Color Package | <input type="checkbox"/> | | |
| 9 | Speaker Upgrade | <input type="checkbox"/> | | |
| 10 | USB Ports | <input checked="" type="checkbox"/> | | |
| 11 | USB-C Port | <input type="checkbox"/> | | |

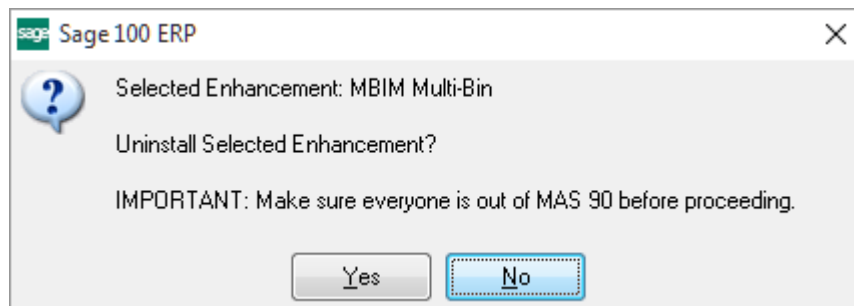
OK ?

Section E: Uninstall DSD Enhancements

A DSD Enhancements Uninstall Utility has been provided for the purposes of removing DSD Enhancements from your Sage 100 System. This utility may be accessed from the **DSD Enhancement Control Panel** menu option on the **Library Master / Utilities** menu.

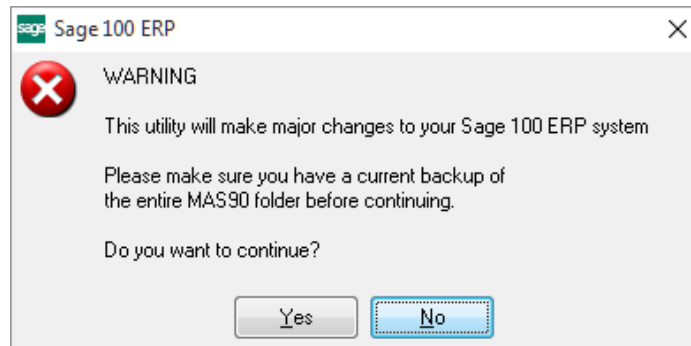


When accessing the **DSD Enhancement Control**, select the enhancement that you wish to Uninstall, and then select the **Uninstall Enhancement** button. The following message box will appear:



Select **No** to exit the Uninstall Process.
Select **Yes** to continue with the Uninstall Process.

The following message box will appear, to remind you that a complete backup of your entire Sage 100 system should be completed prior to uninstalling a DSD product.



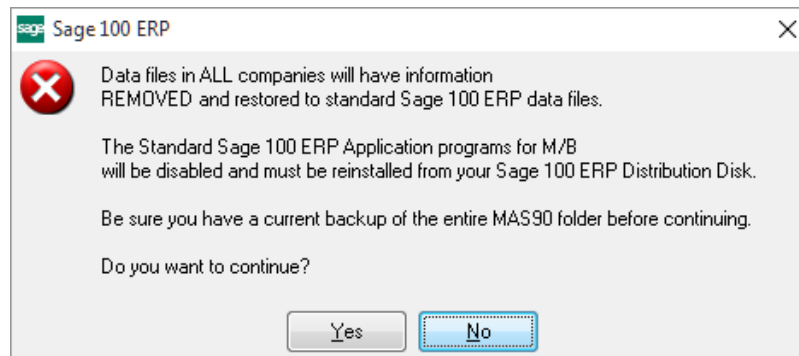
Select **No** to exit the Uninstall Process.
Select **Yes** to continue with the Uninstall Process.

After the Uninstall of the DSD Enhancement, you MUST reinstall certain standard Sage 100 modules, followed by reinstallation of Product Updates and Hot Fixes, if applicable.

A message box will appear, and will display which of those specific Sage 100 modules you must reinstall afterwards.

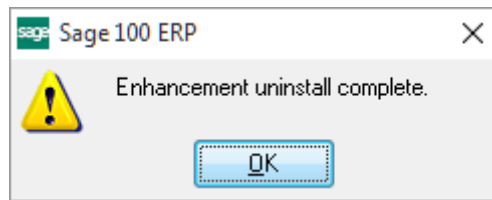
Select **No** to exit the Uninstall Process.
Select **Yes** to continue with the Uninstall Process.

The following message box will appear, displaying the final warning message.



Select **No** to exit the Uninstall Process.
Select **Yes** to continue with the Uninstall Process. At this point, the DSD Enhancement will be removed from the Sage 100 system.

After completion of the Uninstall, the following message box will appear. Select OK to continue.



Now that the Uninstall process is completed, you must:

- Reinstall the applicable standard Sage 100 modules
- Reinstall the latest Sage 100 Service Pack/Updates, if applicable.
- Reinstall any other DSD Enhancements or Developer products that are affected from the reinstallation of the standard Sage 100 module(s).