



# DSD Business Systems

Sage 100 Enhancements

ARMC

Accounts Receivable Multi-Currency

Version 7.00



Information in this document is subject to change without notice.

Copyright 1993-2021, DSD Business Systems All rights reserved.

Accounts Receivable Multi-Currency User's Manual  
Version 7.00

29 April, 2022

DSD Business Systems  
8787 Complex Drive  
Suite 400  
San Diego, CA 92123  
858/550-5900 8:00am to 5:00pm PST  
858/550-4900 Fax

### Trademarks

**ProvideX®** is a Trademark of Sage Software.

**Windows** is a trademark of Microsoft Corporation.

**Sage 100®** is a registered trademark of Sage Software.

**PXPlus®** is a registered trademark of PVX Plus technologies

All other product names and brand names are service marks, and/or trademarks or registered trademarks of their respective companies.

This documentation and the software described herein, is prepared and published under license. Sage Software has not tested or verified either the software or any representation in this documentation regarding the software. Sage Software does not make any warranty with respect to either this documentation or the software described herein, and specifically disclaims any warranty, express or implied, with respect hereto, including the warranties of fitness for a particular purpose and merchantability.

## Table of Contents

---

<b>SECTION A: INTRODUCTION</b>	<b>5</b>
WEB RESOURCES .....	5
SUPPORT .....	5
HOW THE MULTI-CURRENCY A/R ENHANCEMENT WORKS .....	6
ACCOUNTS RECEIVABLE MULTI-CURRENCY FEATURES .....	6
LIST OF DISABLED PROGRAMS .....	7
REPORTS .....	7
<b>SECTION B: GETTING STARTED</b>	<b>9</b>
REQUIRED LEVELS .....	9
INSTALLATION .....	9
DSD ENHANCEMENT CONTROL PANEL .....	11
<b>SECTION C: SETUP</b>	<b>13</b>
MULTI-CURRENCY ACCOUNTS RECEIVABLE SETUP .....	13
INITIAL SET-UP .....	13
CONVERSION NOTES .....	13
DIVISION MAINTENANCE .....	13
BANK CODE MAINTENANCE .....	14
<b>SECTION D: SYSTEM OPERATIONS</b>	<b>15</b>
MAIN MENU .....	15
CUSTOMER MAINTENANCE AND INQUIRY .....	15
CUSTOMER MAINTENANCE – STATISTICS, SUMMARY, AND HISTORY .....	16
CUSTOMER INVOICES, TRANSACTIONS, AND SALES ORDERS .....	17
INVOICE HISTORY INQUIRY .....	18
REPETITIVE INVOICE ENTRY .....	18
REPETITIVE INVOICE SELECTION .....	19
INVOICE DATA ENTRY .....	19
INVOICE PRINTING AND INVOICE HISTORY REPRINT .....	19
SALES JOURNAL .....	20
SALES JOURNAL UPDATE .....	20
CASH RECEIPTS ENTRY .....	20
CASH RECEIPTS ENTRY - INVOICE LINES .....	22
CASH RECEIPTS JOURNAL .....	23
CASH RECEIPTS UPDATE .....	23
CASH RECEIPTS – CREDIT CARD PROCESSING .....	24

<b>SECTION E: REPORTS</b>	<b>25</b>
STANDARD REPORTS .....	25
A/R UNREALIZED GAIN/LOSS REPORT.....	26
<b>SECTION F: PERIOD END MENU</b>	<b>28</b>
FINANCE CHARGE CALCULATION .....	28
FINANCE CHARGE ENTRY .....	28
FINANCE CHARGE JOURNAL / UPDATE .....	29
STATEMENT PRINTING.....	30
<b>SECTION H: UNINSTALL DSD ENHANCEMENTS</b>	<b>31</b>

## Section A: Introduction

---

This manual contains a description and instructions for this DSD product. Operating instructions are included for the features added by this product to Sage 100. For instructions on using Sage 100, refer to the appropriate Sage 100 manual, or call your Sage 100 reseller. DSD Business Systems offers excellent Sage 100 support, at an hourly rate.

### *Web Resources*

DSD web site: <http://www.dsdinc.com>

The Enhancement page contains:

- Current Release Schedule*
- Purchasing Information*
- Installation Instructions*
- Product Support*
- Enhancement Links*

ARMC Accounts Receivable Multi-Currency:

<http://www.dsdinc.com/enhancement/ar-multi-currency-4/>

The product web page contains:

- Product Description*
- Web Links*
- Current Product Version Table*
- Product Installation File Download*
- Product Manual in .pdf Format*
- Revision History*
- FAQ*

### *Support*

DSD provides product support through Sage 100 resellers. Support is provided for the current version. Older versions are supported at an hourly rate. DSD's telephone number is **858-550-5900**. Fax: **858-550-4900**.

For a hard error, where the program displays an error dialog, report:

- Error number.*
- Program name.*
- Line number.*
- Program version.*

*Exact sequence that caused the error, including menus and menu selections.  
Other pertinent information.*

If leaving a message or faxing, please include:

*Your name.*

*Your phone number (and fax if applicable) and extension.*

It is possible to be unable to duplicate a problem, because of data corruption or because we have not exactly duplicated a particular operating environment. In such circumstances, we can only continue to try to fix the problem if we can either access the system with Symantec PCAnywhere or by some other means access or duplicate the system.

### ***How the Multi-Currency A/R Enhancement Works***

The **Multi-Currency Accounts Receivable** enhancement provides the **Sage 100** user with the ability to create Invoices, receive Payment for those Invoices, and print Reports in any Currency using any Exchange rate. This Enhancement is essential for any Company selling to Customers in more than one Country, since the payment of the Invoice is usually in the Customer's Currency.

### ***Accounts Receivable Multi-Currency Features***

- **Bank Accounts in Foreign Currencies:** You will define the Currency for each Bank Account. (if Bank Reconciliation is in use, and you need to see Transactions in the Bank Currency, the **Bank Reconciliation Multi-Currency** is required).
- **Gain/Loss Account:** You will define a Gain or Loss G/L Account by Division to use when updating transactions of payments to Invoices when the payment rate is different.
- **Round-off Account:** You will define a Round-off Account by Division to use when posting round-off amounts generated during currency conversion.
- **Default Entry Currency by Customer:** You will define a default Entry Currency by Customer to be used when entering transactions for that customer.
- **Historical Currency by Customer:** You will define the "Historical" Currency for each Customer. The Customer's history such as Period to Date Sales, etc., will be displayed in this currency (a toggle to Base Currency is provided).
- **Currency Toggle:** You can toggle between Historical, Base and Entry Currency amounts in the Invoices, Transactions, and Sales Order tabs.
- **Invoice Entry in Any Currency:** You will enter Customer Invoices in the Customer's Default Entry Currency, or you may change the Entry Currency to any other established Currency (a choice determined on a per Customer selection).
- **Invoice Entry using any Exchange Rate:** You will see the Exchange Rate for the Entry Currency found in Currency Code Maintenance for the Invoice Date, or you may override the Exchange Rate (a choice determined on a per Customer selection).

- **Invoice History Inquiry displays Entry and Base Currency Amounts:** The Invoice History Inquiry screen displays Base Currency amounts as well as the Invoice Currency amounts, Currency Code and Exchange Rate.
- **Repetitive Invoices in Any Currency:** You may establish Customer Repetitive Invoices in the Customer's Default Entry Currency or in any other established currency.
- **Registers in Base and Entry Currency::** For audit purposes, the Multi-Currency system prints Accounts Receivable Registers in both the Entry Currency and the Base Currency using the assigned Exchange Rates.
- **Invoice Printing and Invoice History Reprint in Entry or Base Currency:** You may print and reprint Customer Invoices in Entry or Base Currency.
- **Form Printing:** Invoices, Statements, and Invoice History Printing can be printed in either Transaction or Base Currency.
- **Cash Receipts Entry in Any Currency:** You may enter a Cash Receipt of one currency to a Bank Account of a different currency, as well as apply the Cash Receipt to a Customer Invoice of a third currency.
- **Cash Receipts Entry using Any Exchange Rate:** When entering Cash Receipts the system uses three different Exchange Rates: 1) Deposit Currency to Base Currency Rate, 2) Check Currency to Base Currency Rate and 3) Check Currency to Deposit Currency Rate. You may use these rates from Currency Code Maintenance or override any of them.
- **Deposits Posted to B/R in Bank Currency:** Transactions posted from the Cash Receipts Journal to Bank Reconciliation are posted in the Bank Currency for reconciliation and reporting purposes (when the Multi-Currency Bank Reconciliation module is also installed).
- **Print Reports in Any Currency:** Print any report in Base, Customer, Entry or Other Currency, using As Posted or Override Rates.
- **Finance Charge Calculation in Any Currency:** Finance Charges may be calculated in any Currency.
- **Unrealized Gain or Loss Report:** You may generate an Unrealized Gain or Loss Report of Open Customer Invoices as of any date for any Entry Currency.

### *List of Disabled Programs*

The following programs have been disabled and may not be used with the Multi-Currency Accounts Receivable module installed.

- Match Credits to Open Invoices (disabled except for Base Currency Invoices)
- Balance Forward Customer transactions are "forwarded" in Base Currency only.

### *Reports*

The following reports have been added or modified by Multi-Currency Accounts Receivable:

- Aged Invoice Report
- Analysis Report
- Cash Expectation Report
- Cash Receipts Journal
- Cash Receipts Report
- Customer Listing
- Customer Listing with Balances
- Customer Sales Analysis
- Customer Sales History by Period
- Deposit Transaction Report
- Division Listing
- Finance Charge Journal
- Invoice History Report
- Invoice History Printing
- Invoice Printing
- Monthly Sales Report
- Recap by Payment Type
- Repetitive Invoice Listing
- Sales Journal
- Statement Printing
- Trial Balance Report
- Unrealized Gain/Loss Report



## Section B: Getting Started

### CAUTION

- **If you reinstall or upgrade one of the Sage 100 modules listed in the following table, you must also reinstall this Enhancement.**
- Enhancements from different Sage Developers are generally not designed to work together. If installed together, problems are likely to occur.
- **Check with DSD before installing more than one Enhancement.**

### Required Levels

Sage 100 Module	Module Required	Required Level
A/R	Y	7.00
J/C	N	7.00
BRMC	N	7.00
CUMC	Y	7.00

### Installation

1. **Back-up:** Exit all Sage 100 sessions. Back-up existing Sage 100 data.
2. **Check Levels:** Sage 100 module levels **must match** those listed above.
3. **Run Enhancement Setup Program:** Save the executable installation program (sent to you or downloaded from our website) in a convenient location on the Sage 100 server. Launch the program from Windows Explorer or by selecting Start/Run, and then browse for the file in the location you saved it. Follow on-screen instructions.
4. **Send your Sage Serial Number to your DSD Representative:** Send your Sage Serial Number to your DSD representative in order for us to send you back the encrypted keys to unlock your system. This serial number can be found in Library Master\Setup\System Configuration, Tab 3. Registration as Serial Number.
5. **Re-Start Sage 100:** Sage 100 will be updated.
6. **Unlock the Enhancement:** DSD Enhancements must be unlocked to run. When any part of the Enhancement is run for the first time, the **DSD Enhancement License Agreement and Activation** window will appear. Follow the steps shown on that window. *You can click the Help button for more detailed instructions.*

**Note:** On the next page is a screenshot of the DSD Enhancement License Agreement and Activation window.

After accepting the License Agreement, you can then select the type of unlocking that you'd prefer. The choices are File, Web, Demo and Manual Entry.

**File Unlock:** After receiving your encrypted serial number key file from DSD, and placing that file in the MAS90/SOA directory, selecting this option will unlock all products keys contained in the file. This means you can unlock all enhancements at once using this option.

**Web Unlock:** If the system that is running the DSD Enhancement *has web access* and you *have sent DSD your Sage Serial number*, you can unlock the Enhancement without assistance using Web Unlock. When this option is selected, the program will attempt to download encrypted serial number key file from DSD *and then proceed to unlock all enhancements contained in the file*.

- The Sage 100 system that is being used must have web access for this option to be effective.
- You can send your Sage Serial Number to your DSD Enhancements sales representative.

**Demo Unlock:** If a Demo mode is available for the Enhancement you're running, you will be able to Demo unlock the product without assistance from DSD for demo purposes.

- Creating a Demo Unlock is a good way to temporarily unlock DSD Enhancements off-hours, if you do not have web or email access. Later, you can unlock the product fully, during business hours.

**Manual Entry Unlock:** If you want to unlock a single enhancement using a single encrypted key, you can select this option and enter the 64 character key you receive from DSD by copy and paste.

**Note:** You can also unlock a DSD Enhancement through the [DSD Enhancement Control Panel](#) found on the Library Master Utilities Menu. Then, select the Enhancement with your mouse from the list of Enhancements and click the **Unlock Product** button on the right side of the window.

- Convert Data:** After unlocking, the DSD Conversion Wizard will appear. Follow on-screen instructions to complete data conversion. *You can exit the conversion program without converting data. The Enhancement will not proceed, however, until data is converted. If you enter an enhanced program and data*

## Accounts Receivable Multi-Currency

### 11

*has not been converted, the conversion program will run again.*

#### **DSD Enhancement Control Panel**

Starting with version 3.61, all DSD Enhancement products include DSD's Enhancement Control Panel. The **DSD Enhancement Control Panel** is accessed from the **Library Master Utilities** menu.

The DSD Enhancement Control Panel is a simple to use yet powerful system to help maintain DSD Enhancements installed on a Sage 100 system. To use it, select an Enhancement product from the list on the window and then click the button, on the right side of the window, which corresponds with the desired task.

**View Manual:** This button will display the product manual for the selected Enhancement using Adobe Acrobat. For this to be possible, the PDF file for the corresponding manual must be in the

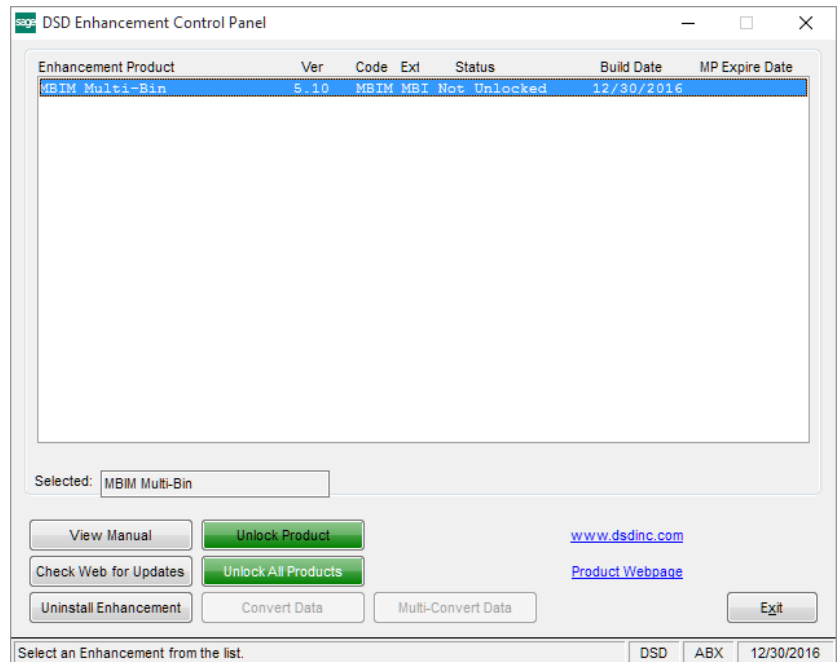
"MAS90/PDF" folder in the Sage 100 system. If the file is not present, and the system has web access, the correct PDF file will be automatically downloaded from the DSD website, put into the "MAS90/PDF" folder and then displayed.

**Check the Web for Updates:** This button will check the DSD website to see what the current build is the selected Enhancement and alert the user if a later version is available. *This requires an internet connection on the Sage 100 system.*

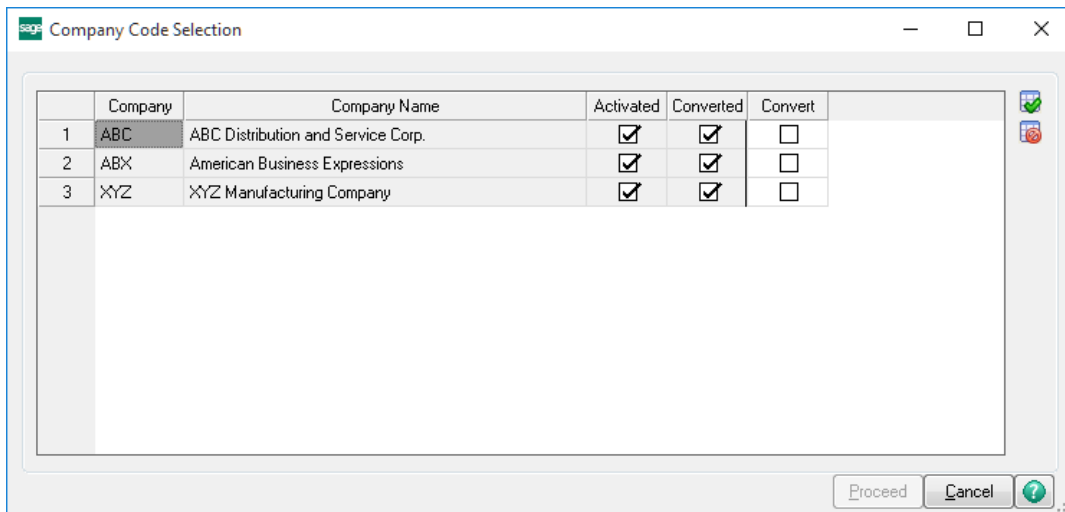
**Unlock Product:** This will cause the DSD Enhancement License Agreement and Activation window to appear. Using this window is described on the previous page. *This button is disabled if the selected Enhancement is already unlocked or if unlocking is not required.*

**Unlock All Products:** This will cause the DSD Enhancement All License Agreement and Activation window to appear. This window is similar to the one described on the previous page, but has only web and file as options to unlock. *This button is never disabled.*

**Convert Data:** After verification, the selected Enhancement's data conversion program will run. Data conversion is non-destructive, and may be triggered any number of times. Sometimes this is required to fix data records imported or updated from a non-enhancement installation.



**Multi-Convert Data:** Multiple Companies can be converted at the same time for a given Enhancement. *(If you have a large number of Companies to convert, please do in batches of 20 or fewer due to memory limitations.)*



**Help:** The Help button, located at the bottom right of the window, opens an HTML help file.

**Get Adobe Acrobat:** Opens the Adobe Acrobat website to the page where Acrobat can be downloaded and installed.

**Uninstall Enhancement** If this option is available, then selecting this button will start the un-install process, removing the enhancement from the system. (for more information see [Uninstall DSD Enhancements](#))

## Section C: Setup

---

### *Multi-Currency Accounts Receivable Setup*

#### Data You Need

The best choice is to do all conversions in the [DSD Enhancement Control Panel](#), as in the previous page above.

Before beginning the Multi-Currency Startup process, you should have the following information assembled and available for use:

- List of Accounts Receivable Divisions including their respective Gain/Loss and Round-off Accounts.
- List of Bank Accounts used including their respective Currency Codes.
- List of Customers, including their Default Entry and Historical Currencies, and whether some Customers will be limited to use only their Default Currency
- List of Repetitive Invoices in their corresponding Entry Currencies.

A **Currency Button** appears in all Multi-Currency related screens. Select this button to access the Multi-Currency information. Also, the Entry Currency is displayed at the bottom center of the screens.

### *Initial Set-up*

After data conversion, set-up ARMC in the following order. See other parts of this section for details of each.

1. Set-up Gain/Loss and Round-off Accounts in Division Maintenance.
2. Setup Currency Code in Bank Maintenance for foreign Bank Accounts.
3. Setup Customer's Currencies if different than the Base Currency.

### *Conversion Notes*

The system will designate the following values for each transaction converted from an existing Sage 100 System:

1. Entry Currency = Base Currency
2. Entry Rate = 1

### *Division Maintenance*

The Accounts Receivable Division Maintenance screen has been modified to include a new **Currency Button**. Select this button to access the **Multi-Currency Settings** screen:

**Exchange Gain/Loss Acct:** This is a General Ledger Account. Since the exchange rate may fluctuate between the time Receivable Invoice is posted and the time a Payment is received, the amount of Base Currency (Cash) needed to pay the invoice may be more or less than that originally posted. The Gain or Loss amounts for this Division will be posted to this Account. A gain or loss will only occur if an invoice is entered in a non-Base Currency, and then paid in that same currency.

**Exchange Round-off Acct:** This is a General Ledger Account to which any round-off calculations for this division are to be posted. It is often the same Account as the Gain/Loss Account.

### Bank Code Maintenance

Bank Code Maintenance is modified to set up a Currency Code for each Bank Account. This allows the user to keep bank account balances in their own currency (if BRMC is installed), and facilitates the reconciliation of bank statements.

**NOTE:** *If you are converting to Multi-Currency Accounts Receivable from an existing Sage 100 system, the Bank Currency Code for all existing Bank Accounts will be set to the Base Currency.*

Bank Code Maintenance has a **Currency Button**. Select this button to access the **Multi-Currency Settings** screen.

**Currency Code:** Enter the Currency Code for this Bank Account. Select the Lookup Button to display a list of Currency Codes on file.

## Section D: System Operations

### Main Menu

### Customer Maintenance and Inquiry

Customer Maintenance allows display of Customer activity in Base, Entry, and Customer Historical currencies.

The Customer Maintenance Main Panel includes a **Currency Button**. Select this button to access the **Multi-Currency Settings** screen:

**Default Entry Currency:** Enter the Default Entry Currency for this Customer. (*During ARMC conversion this will be assigned the Base Currency*). During Data Entry, whenever this Customer is selected the Entry Currency will default to this Currency. The Default Entry Currency may be changed at any time.

**Historical Currency:** Enter the Currency in which you want to use to display amounts for this Customer (in addition to the Base Currency). (*During ARMC conversion this will be assigned the Base Currency*). If this field is changed after it has been set for the first time, the system will display this prompt. When the Save/Accept button is pressed, all Historical total amounts will be converted to the new Historical Currency Code.

The screenshot shows a dialog box titled "Multi-Currency Settings - Customer Maintenance". It contains the following fields and options:

- Default Entry Currency: EUR (with a magnifying glass icon) Euro
- Historical Currency: EUR (with a magnifying glass icon) Euro
- Allow Currency Change:
- Allow Rate Change:
- Credit Limits section:
  - Historical Currency: 10,000.00
  - Base Currency: 14,000.00
- An OK button at the bottom right.

**Allow Currency Change:** Select this check box if you want to be able to override the Entry Currency during Data Entry for this Customer. Clear this check box if you do not want to allow Entry Currency override.

The screenshot shows a message dialog box titled "Sage 100". The message text reads: "You have changed the Historical Currency for this Customer. HistoricalAmounts will not be recalculated until you Save/Accept this Customer record". There is an OK button at the bottom center.

(*During ARMC conversion this will be checked*). If you change the Entry Currency for a transaction, the system will ask you for the Supervisor Password if one was set up in the Multi-Currency Options.

**Allow Rate Change:** Select this check box if you want to be able to override the Exchange Rate for each transaction during Data Entry for this Customer. Clear this check box if you do not want to allow Exchange Rate override. (*During ARMC conversion this will be checked*). If you change the Exchange Rate for a transaction, the system will ask you for the Supervisor Password if one was set up in the Multi-Currency Options.

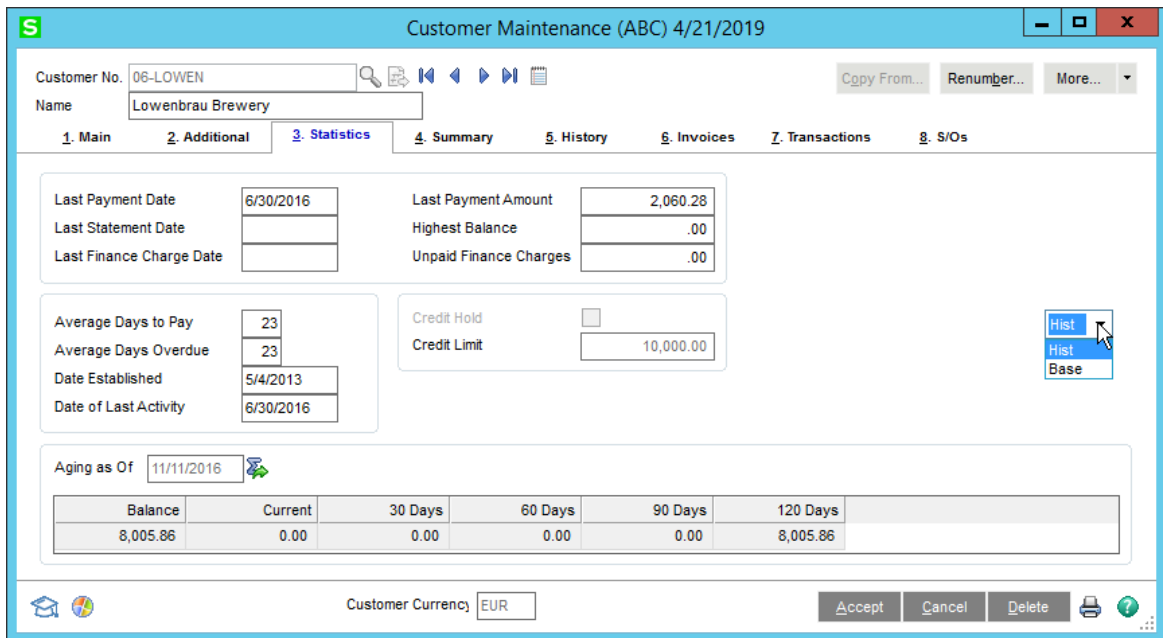
**Historical Currency Credit Limit:** Enter the Credit Limit used for transactions in the Customer Historical Currency.

**Base Currency Credit Limit:** Enter the Credit Limit used for transactions in the Base / Other Currency.

**Note:** The Customer's *Historical Currency* is always displayed at the bottom of the Customer Maintenance Panel as *Customer Currency: XXXX*.

**Customer Maintenance – Statistics, Summary, and History**

The Statistics, Summary, and History panels display the amounts in both **Base Currency** and the Customer's **Historical Currency**. A Drop Box has been added to allow display toggle between these two Currencies. Historical is the default.





# Accounts Receivable Multi-Currency

## 17

### Customer Invoices, Transactions, and Sales Orders

The Invoices and Transactions Panels display the amounts in **Historical, Base, or Entry Currency**. (It is possible to have a transaction that was not entered in either the Customer's Currency or the Base Currency). A **Drop Box** allows the display to toggle between these three currencies. Historical is the default.

Customer Maintenance (ABC) 4/21/2019

Customer No. 06-LOWEN  
Name Lowenbrau Brewery

1. Main 2. Additional 3. Statistics 4. Summary 5. History 6. Invoices 7. Transactions 8. S/Os

Invoice No.	Invoice Type	Inv Date	Inv Due Date	Disc Date	Curr	Amount	Discount	Balance	Customer PO No.	Comment	Terms	Slspns	Entry Currency	Exchange Rate
0100075	Invoice	6/25/2016	6/25/2016		EUR	5,095.90	0.00	5,095.90			00 0200	0200	EUR	0.81899000
0100072	Invoice	6/10/2016	6/10/2016		EUR	6,460.82	0.00	0.00			00 0200	0200	EUR	0.81899000
0100057	Invoice	5/29/2016	5/29/2016		EUR	2,060.28	0.00	0.00			00 0200	0200	EUR	0.82009000
0100080	Invoice	5/21/2016	5/21/2016		EUR	2,909.96	0.00	2,909.96			00 0200	0200	EUR	0.82009000
0100060	Invoice	5/9/2016	5/9/2016		EUR	16,237.80	0.00	0.00			00 0200	0200	EUR	0.82009000

Trans Date Trans Type Trans Amount Pay Date Check No. Payment Ref Cr Card ACH RMA No.

Balance	Current	30 Days	60 Days	90 Days	120 Days
8,005.86	0.00	0.00	0.00	0.00	8,005.86

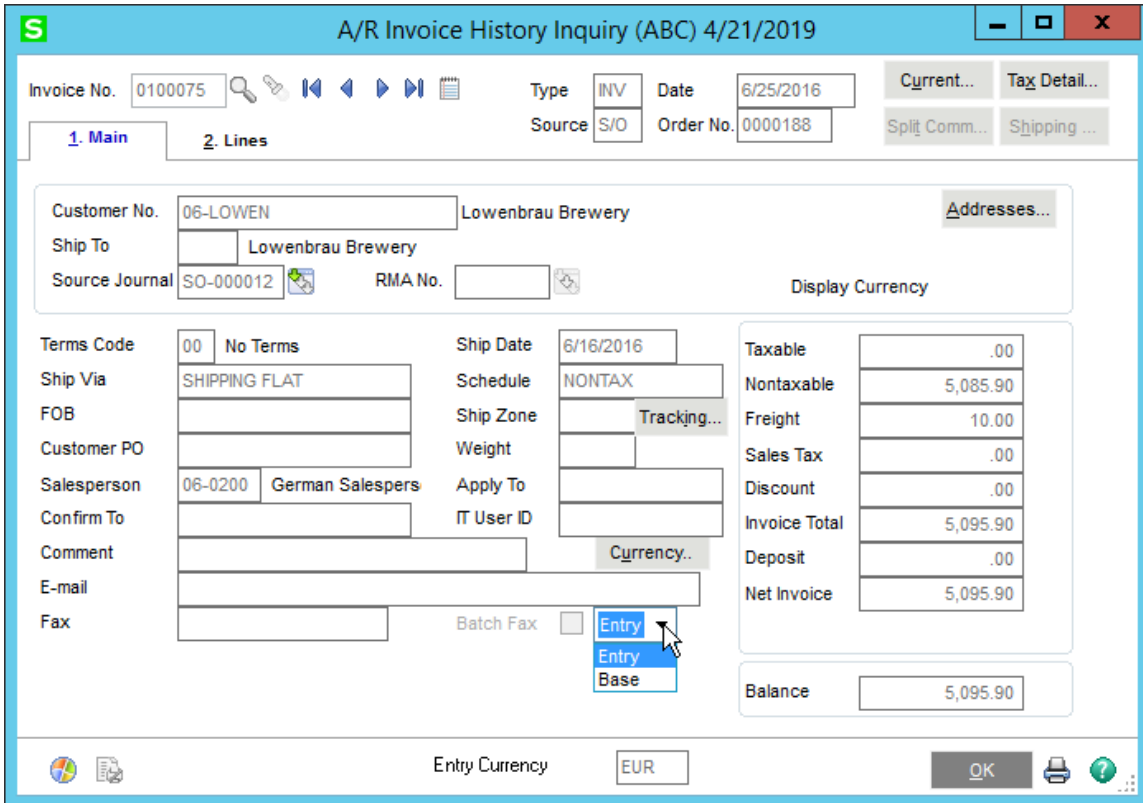
Customer Currency EUR

Accept Cancel Delete

**Invoice History Inquiry**

Invoice History Inquiry displays information in both **Base Currency** and **Entry Currency**. The Header and

Lines panel



include a **Drop Box** to toggle display of these amounts.

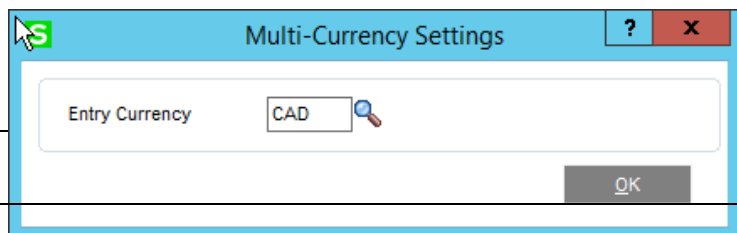
The Header Screen has also been modified to include a **Currency Button**. Select this button to see the **Currency Code** and **Exchange Rate** of the transaction.

The Entry Currency of the Invoice is displayed at the bottom of the Invoice History Inquiry Panel.

**Repetitive Invoice Entry**

The Repetitive Invoice Header Panel includes a **Currency Button**. Select this button to access the **Multi-Currency Settings** screen:

**Entry Currency:** Enter the Currency Code for the Repetitive Invoice. Select the Lookup Button to list all Currency



## Accounts Receivable Multi-Currency

### 19

Codes on file. If you change the Transaction Currency, the system will ask you for the Supervisor Password if one was setup in Multicurrency Options.

All amounts entered for a Repetitive Invoice will be in the selected currency.

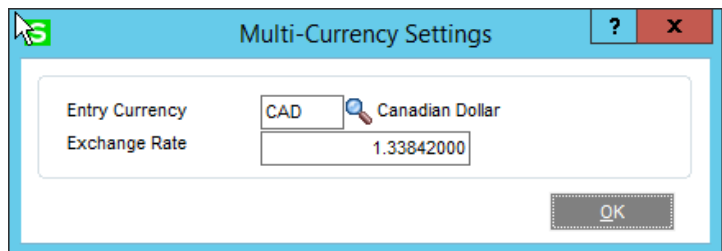
#### *Repetitive Invoice Selection*

The Entry Currency for all Invoices generated through Repetitive Invoice Selection will be the **Entry Currency** of the Repetitive Invoice. The Exchange Rate will be the rate found in Currency Code Maintenance using the Invoice Date.

#### *Invoice Data Entry*

The Invoice Header Panel includes a **Currency Button**. Select this button to access the **Multi-Currency Settings** screen:

**Entry Currency:** Enter the Entry Currency Code for the Invoice. Select the Lookup Button to list all Currency Codes on file. The system will ask you for the Supervisor Password if one was set up in Multi-Currency Options.



**NOTE:** *If amounts have already been entered, and the currency is changed, the Invoice amounts remain the same and will be considered to be amounts in the new currency.*

This field will not be accessible if **Allow Currency Change** is not checked for the Customer in Customer Maintenance.

**Exchange Rate:** Enter the Exchange Rate for the Invoice. The initial rate displayed is found in Currency Code Maintenance for the Invoice Date. If the default exchange rate is overridden, then the Invoice amounts remain the same and will be converted to Base Currency when posting to General Ledger using the new Exchange Rate.

The system will ask you for the Supervisor Password if one was set up in Multi-Currency Options. This field will not be accessible if **Allow Rate Change** is not checked for the Customer in Customer Maintenance.

#### *Invoice Printing and Invoice History Reprint*

**Crystal Report** forms are used to print Invoices. The Forms have Currency fields available to print:

- APMC\_234\_EntryCurrency – Currency Code for the Invoice Currency
- APMC\_234\_StringRate – The Exchange Rate for the Invoice Currency
- APMC\_234\_CurrencyName – The name of the Invoice Currency
- APMC\_234\_CurrencySymbol – The Currency Symbol of the Invoice Currency
- **NOTE:** *If you do not see these new fields during an edit of the Crystal form, then select **Verify Database** from the **Database** dropdown menu to update your data dictionaries.*

### *Sales Journal*

If any Invoice has an Entry Currency other than the **Base Currency**, the Sales Journal will be printed first in **Entry Currency**. This is followed by the Sales Journal in **Base Currency**.

The Gross Profit and Recap Report will be printed in **Base Currency**.

### *Sales Journal Update*

The Sales Journal Update performs all the appropriate currency conversions to Base Currency.

### *Cash Receipts Entry*

The Cash Receipts Entry program allows the entry of Cash Receipts in any Currency to any Bank Account and apply the Cash Receipt to Customer Invoices of any Currency. Additionally, you may use the Exchange Rates as of the Deposit Date obtained from Currency Code Maintenance or override them with a new rate.

**Note:** *The Cash Receipt Entry program uses these Currencies and Exchange Rates to process deposits.*

**Deposit Currency:** This is the currency in which you are making the deposit; in other words, this is the Bank Account Currency.

**Check Currency:** This is the actual currency of the check, letter of credit, draft, etc., that you received from your Customer and that you deposited in the Bank (regardless of the Bank Currency).

**Invoice Currency:** This is the Entry Currency of the Invoice being paid by the deposit.

**Deposit -> Base Rate:** This is the Exchange Rate of the Deposit/Bank Currency in relation to the Base Currency.

**Check -> Base Rate:** This is the Exchange Rate of the Check Currency in relation to the Base Currency.

# Accounts Receivable Multi-Currency

## 21

**Check -> Deposit Rate:** This is the Exchange Rate of the Check Currency in relation to the Deposit Currency. This Rate is the actual rate deposited in the Bank Account to the Deposit Currency.

When a Bank Code is first entered in the **Cash Receipts Deposit** screen, the Bank Currency Code will be displayed at the bottom of the screen. Select the **Currency Button** to access the Multi-Currency Settings Panel to change the Deposit Rate if desired:

**NOTE:** If records exist for this deposit, then the Deposit Rate may not be changed. The rate may only be changed at the start of the Deposit entry.

Deposit Number	00026	Batch	00011
Description			
Bank Code	F Euro Bank		
Deposit Date	3/27/2019		
Cash Deposit Amount	2,909.96	Currency...	
Credit Card Deposit Amount	.00		
ACH Deposit Amount	.00		
Deposit Balance	2,906.48		
Currency	EUR	Accept	Cancel
		Delete	?

When a Customer number is entered to identify the source of the cash receipt, both the Deposit (Bank) and Check Currency Codes will be displayed at the bottom of the screen, the Check Currency is defaulted to the Bank Currency.

Customer No.	06-LOWEN	Customer...	Deposit...
Name	Lowenbrau Brewery	Invoice No.	
Deposit Type	Cash	Check No.	52145
<b>1. Header</b> <b>2. Lines</b> <b>3. Payment</b>			
Amount Received	.00	Currency...	Auto...
Customer Balance	8,005.86		
Posting Balance	.00		
<b>Deposit Information</b>			
Deposit Number	00026	Batch	00011
Description			
Bank Code	F		
Deposit Date	3/27/2019		
Cash Amount Remaining	2,906.48		
Credit Card Amount Remaining	.00		
ACH Amount Remaining	.00		
Deposit Remaining	2,906.48		
Check Currency	EUR	Accept	Cancel
Deposit Currency	EUR	Delete	?

Select the **Currency Button** to access the **Check Currency** settings. The Check Currency, Check Rate, and Check-to-Deposit Rate can **only** be changed if:

- a) The **Amount Received** field on the Header Panel is set to zero, that is, no Payment amount has been entered yet, and
- b) There are no Invoices or G/L Distributions entered yet.

**NOTE:** *if the Payment Currency is different than the Bank Currency, such as for a Wire Transfer, one must change the Check Currency (and Exchange Rate when determined by the Bank) first.*

**Check Currency:** Enter the Check Currency. This field will default to the Deposit / Bank Currency. Select the **Lookup Button** to list all Currency Codes on file. This field may not be changed once you enter an Invoice or a G/L distribution line.

**Check -> Base Rate:** Enter an Exchange Rate to be used when converting amounts from the Check to the Base Currency. This field may not be changed once you enter an Invoice or G/L distribution line or if you are using a Customer Contract. The system will ask for the Supervisor Password if one was set up in Multicurrency Options.

Multi-Currency Settings	
Deposit Currency	EUR Euro
Deposit Rate	0.88410000
Check Currency	EUR Euro
Check -> Base Rate	0.88410000
Check -> Deposit Rate	1.00000000

**Check -> Deposit Rate:** Enter an Exchange Rate to be used when converting amounts from the Check to the Deposit Currency. This field may not be changed once you enter an Invoice or G/L distribution line or if you are using a Customer Contract. The system will ask for the Supervisor Password if one was set up in General Ledger.

### **Cash Receipts Entry - Invoice Lines**

When you are entering an Invoice line against a Customer Payment, you may select the **Lookup Button** to display all Invoices on file. This Listing displays the Invoice Currency of each Invoice.

**S** Cash Receipts Entry (ABC) 4/21/2019

Customer No. 06-LOWEN Name Lowenbrau Brewery Invoice No.

Deposit Type Cash Check No. 52145

1. Header 2. Lines 3. Payment

Quick Row 2

	Invoice No.	Inv Date	Inv Amount	Disc Used	Amt Posted
1	0100080-IN	5/21/2016	2,909.96	.00	2,909.96
2			.00	.00	.00

Line Type Invoice  
 Discount Date  
 GL Account  
 G/L Acct Desc

Posting Balance .00  
 Total Posted 2,909.96

Deposit Currency EUR Accept Cancel Delete

**Cash Receipts Journal**

If any Payment has an Entry Currency other than the **Base Currency**, the Cash Receipts Journal will first be printed in **Entry Currency**. This is followed by the register in **Base Currency**.

The Recap Report will be printed in **Base Currency** and will include any round-off amounts calculated during currency conversions.

**Cash Receipts Update**

The Cash Receipts Journal Update performs all the Currency conversions. Any Gain/Loss will be calculated and will post to the General Ledger Account defined in Division Maintenance. This amount is caused by the difference between the original Invoice Exchange Rate and the Check -> Base Rate at the time that the Invoice is paid.

***Cash Receipts – Credit Card Processing***

Since Credit Card Processing in Cash Receipts Entry does NOT involve Bank Codes, the Deposit Currency Code and Deposit Amount will always be in Base Currency. The “Check” Currency and “Check” Amounts may still be in different currencies, but those amounts will be converted back to Base Currency for Credit Card Pre-Authorization, Post-Authorization, and Payments.



## Section E: Reports

### Standard Reports

When printing any Accounts Receivable Reports, you may define the Currency options to use. A **Currency Button** is in the Report Panel, and when selected, the following screen will be displayed.

**NOTE:** *This screen will vary depending on the report being printed and the options entered)*

**Printing Currency:** Select **Entry** for Transaction Currency, **Base** for Base Currency, **Customer** for Customer Currency, **Other** for Other Currency. The Printing Currency may be modified by some of the options below.

**Starting and Ending Currency:**

Enter a range of Currencies for a specific group of transactions. These fields control the selection of Invoices by their Entry Currency, regardless of any other option. Choosing one Currency only for Starting and Ending will select only Invoices who's Entry Currency matches this. Press the Lookup Button to list all Currencies on file. *This field will be displayed only for reports that can print amounts from individual Transactions.*

**Currency Code:** Enter the Currency Code in which to print all amounts. This field will be displayed only if you selected **Other** as the **Printing Currency** option.

**Printing Amounts:** Select **As Posted** to import all amounts As Posted or **Override Date** to convert amounts using an Exchange Rate as of an Override Date.

**Override Date:** Enter a date to import amounts converted to the Printing Currency using the Exchange Rate as of this date. This field will be displayed only if you selected **Override Date** as the **Printing Amounts**.

**Rate Type:** Select **AP/PO Rate**, **AR/SO Rate**, **GL Rate**, or **FASB52 Rate**. This field will be displayed only if you selected **Override Date** as the **Printing Amounts**.

**Override Rate:** Enter a Rate to be used when exporting amounts. This field will be displayed only if you selected **Rate Override** as the **Printing Currency**.

### **A/R Unrealized Gain/Loss Report**

The Unrealized Gain/Loss Report is found on the Reports Menu in the **Multi-Currency module**. This report calculates the Unrealized Gain or Loss for all open invoices based upon the reporting date. This report may be used to determine the Gain/Loss amounts to create a General Journal at the end of one Period and reverse it at the beginning of the next Period.

#### **Unrealized Gain/Loss As**

**Of:** The default date displayed will be the current System Date. This date will be used to calculate the current Exchange Rate for the Transaction Currencies.

#### **Print Report in Detail:**

Select this check box to print a detailed report including Invoice Number and Date information. Clear this check box to print a Summary report providing total amounts by Currency and Customer only.

Select Field	Operand	Value
Customer Number	All	
Currency Code	All	

**Exclude Future Transactions:** Check this box to exclude any open invoices with an invoice date after the reporting date. Clear this box to include future-dated invoices.

**Exclude Zero Balance Invoices:** Normally left checked since zero balance Invoices do not affect the Gain/Loss, uncheck this box to list all Invoices.

**Currency Code Range:** Select the **All** check box to select transactions in all Transaction Currencies, or enter a range of Currencies for a specific group of Transactions. Select the Lookup Button to list all Currencies on file.

**Customer Number Range:** Select the **All** check box to accept all Customers on file, or enter a range of Customer Numbers for a specific group of Customers. Select the Lookup Button to list all Customers on file.

# Accounts Receivable Multi-Currency

27

(sample report with Print In Detail unchecked)

A/R Unrealized Gain/Loss Report

## ABC Distribution and Service Corp. (ABC)

	Invoice Bal Entry Curr.	Invoice Bal Base Curr.	Gain/Loss Entry Curr.	Gain/Loss Base Curr.
<b>Currency Code: EUR</b>				
06-BRUT Brut Brewing Co.	9,320.33	11,373.52	-796.76	-895.71
06-LOWEN Lowenbrau Brewery	8,005.86	9,770.52	-685.30	-770.41
<b>Currency EUR Totals:</b>	<u>17,326.19</u>	<u>21,144.04</u>	<u>-1,482.06</u>	<u>-1,666.12</u>
<b>Currency Code: GBP</b>				
08-GLENFID Glenfiddich Brewing Co.	3,071.98	5,897.14	-1,461.97	-1,901.53
08-GUINNESS Guinness Brewing Co.	6,832.25	12,008.01	-2,399.99	-3,121.57
<b>Currency GBP Totals:</b>	<u>9,904.23</u>	<u>17,905.15</u>	<u>-3,861.96</u>	<u>-5,023.10</u>
<b>Currency Code: MXN</b>				
07-CORONA Corona Beer	52,813.43	4,773.67	-37,041.35	-1,967.88
07-TECATE Tecate Distillery	23,329.95	2,127.82	-16,721.95	-888.38
<b>Currency MXN Totals:</b>	<u>76,143.38</u>	<u>6,901.49</u>	<u>-53,763.30</u>	<u>-2,856.26</u>

## Section F: Period End Menu

### Finance Charge Calculation

The Finance Charge Calculation program allows the calculation to be performed in the Customer Default Entry Currency, Base or Other Currency. The Main Panel has been modified to include a new **Currency Button**. Select this button to access the **Multi-Currency Settings** screen.

**Finance Charge Currency:** Select **Customer** for the Customer's Default Entry Currency, **Base** for Base Currency, or **Other** for Other Currency. This field will default to Customer Currency.

**Currency Code:** Enter the Currency Code in which to generate Finance Charges. This field will be displayed only if you selected **Entry** at the **Finance Charge Currency** drop box.

**Default Entry Currency Range:** Select a range of Default Entry Currencies. A **Lookup Button** is available to select a specific Currency Code.

### Finance Charge Entry

The Finance Charge Entry program has been modified to generate Finance Charges in the Customer Default Entry Currency, Base or Other Currency.

This Multi-Currency Options screen will be displayed after you enter the Customer Number for a new Finance Charge. If a Finance Charge was already generated, then this screen will be displayed when you select the **Currency Button** from the Finance Charge Entry panel.

**Entry Currency:** Enter a Currency for this Finance Charge. This field will default to the

## Accounts Receivable Multi-Currency

### 29

---

Customer's Default Entry Currency. Select the **Lookup Button** to list all Currency Codes on file.

If the Entry Currency is changed after the Finance Charge has been calculated, the system will recalculate the Finance Charge to be in the new currency.

**Exchange Rate:** Enter an Exchange Rate for this Finance Charge. This field will default to the Exchange Rate as of the Accounts Receivable System Date.

**NOTE:** *If the Exchange Rate is changed after the Finance Charge has been calculated, the Finance Charge will remain the same and will be converted to Base Currency when posting to General Ledger using the new Exchange Rate.*

### *Finance Charge Journal / Update*

If any Finance Charge has an Entry Currency other than the **Base Currency**, the Finance Charge Journal will first be printed in **Entry Currency**. This is followed by the register in **Base Currency**.

The Finance Charge Journal Update performs all the Currency conversions. Round-off amounts will be calculated and will post to the General Ledger Account defined in Division Maintenance.

### Statement Printing

A new **Currency Button** is on Statement Printing Panel, and when selected, the following screen will be displayed:

#### Printing Currency:

Select **Entry** for Transaction Currency, **Base** for Base Currency, or **Customer** for Customer Historical Currency

#### Printing Amounts:

Select **As Posted** to import all amounts As

Posted or **Override Date** to convert amounts using an Exchange Rate as of an Override Date. This field will be displayed only if you selected **Other** as the **Printing Currency**.

**Override Date:** Enter a date to print amounts converted to the Printing Currency using the Exchange Rate as of this date. This field will be displayed only if you selected **Override Date** as the **Printing Amounts**.

**Rate Type:** Select **AP/PO Rate**, **AR/SO Rate**, **GL Rate**, or **FASB52 Rate**. This field will be displayed only if you selected **Override Date** as the **Printing Amounts**.

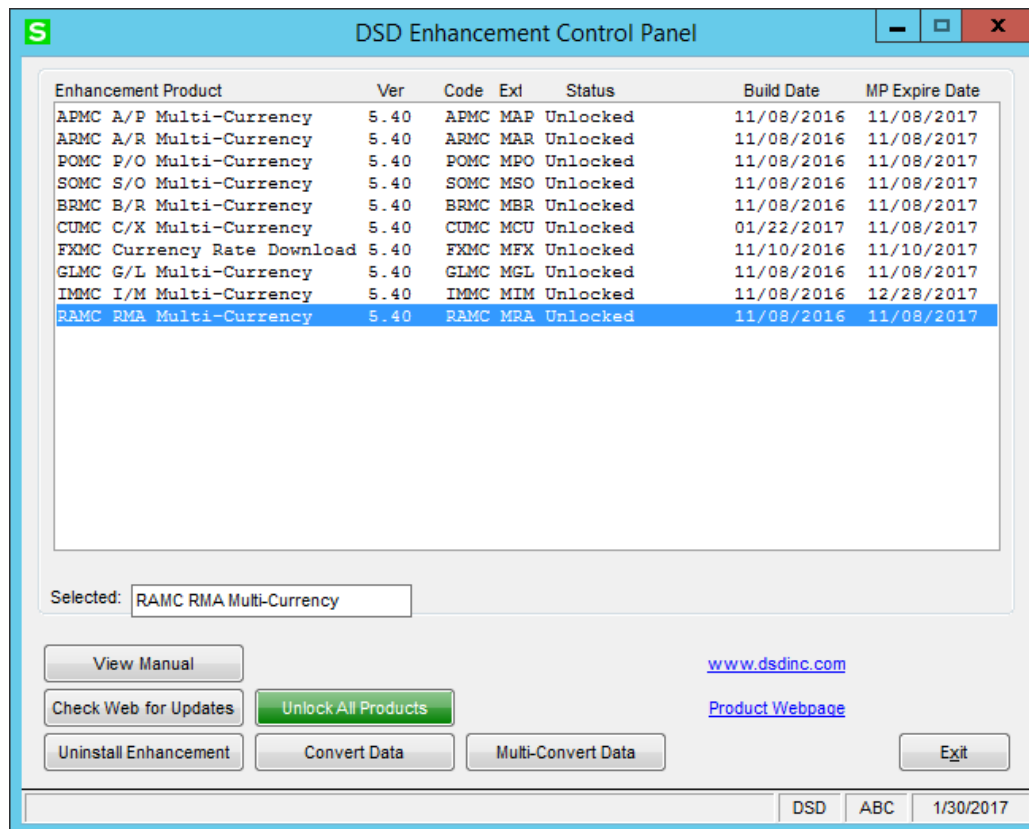
The following additional fields have been added to the Statement Printing Crystal Work file, and are available for printing.

- ARMC\_234\_PrintCurrency – The Currency Code that for each transaction. If you have chosen Base Currency, then the ARMC\_234\_PrintCurrency will always be Base Currency Code. If you have chosen Customer Currency, then the ARMC\_234\_PrintCurrency will always be the customer's Historical Currency Code Base Currency. If you have chosen Entry Currency, then the ARMC\_234\_PrintCurrency will be the entry currency of each record
- ARMC\_234\_PrintCurrency Name
- ARMC\_234\_PrintCurrencySymbol
- ARMC\_234\_HistoricalCurrency – Customer's Historical Currency Code
- ARMC\_234\_HistCurrencyName
- ARMC\_234\_HistCurrencySymbol

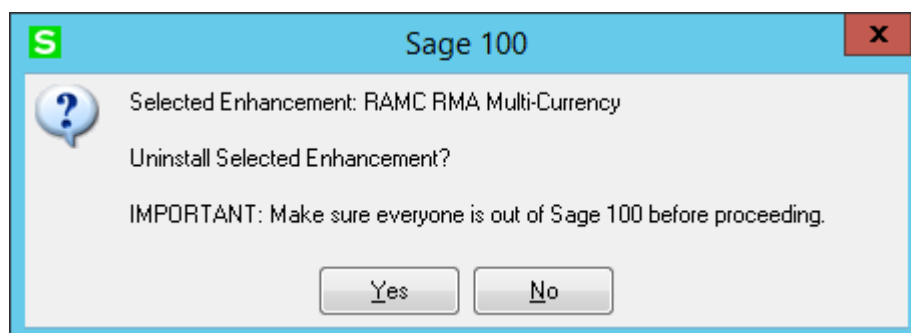
If you do not see this new field during the edit of the Crystal form, then select **Verify Database** from the **Database** dropdown menu to update your data dictionaries.

## Section H: Uninstall DSD Enhancements

A DSD Enhancements Uninstall Utility has been provided for the purposes of removing DSD Enhancements from your Sage 100 System. This utility may be accessed from the **DSD Enhancement Control Panel** menu option on the **Library Master / Utilities** menu.



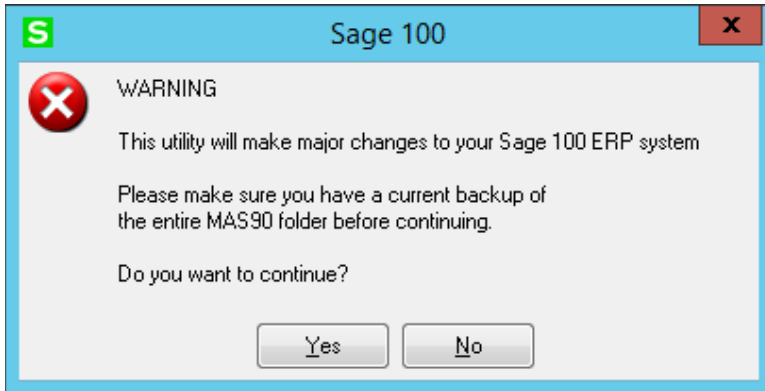
When accessing the **DSD Utility Suite**, select the enhancement that you wish to Uninstall, and then select the **Uninstall Enhancement** button. The following message box will appear:



Select **No** to exit the Uninstall Process.

Select **Yes** to continue with the Uninstall Process.

The following message box will appear, to remind you that a complete backup of your entire MAS90 system should be completed prior to uninstalling a DSD product.



Select **No** to exit the Uninstall Process.

Select **Yes** to continue with the Uninstall Process.

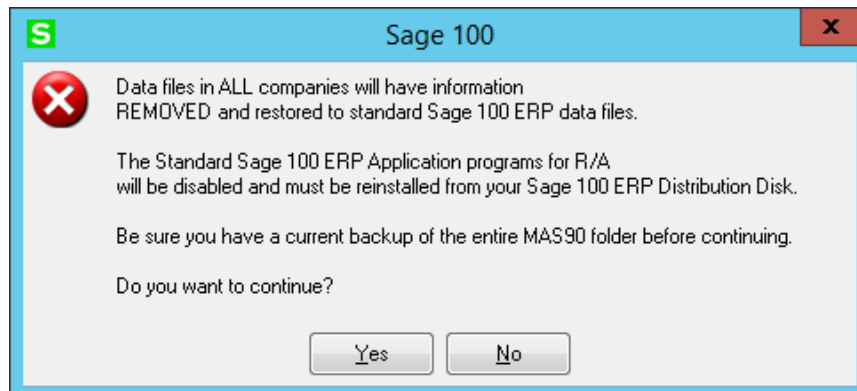
**After the Uninstall of the DSD Enhancement, you MUST reinstall certain standard Sage 100 modules, followed by reinstallation of Product Updates and Hot Fixes, if applicable.**

A message box will appear, and will display which of those specific Sage 100 modules you must reinstall afterwards.

Select **No** to exit the Uninstall Process.

Select **Yes** to continue with the Uninstall Process.

The following message box will appear, displaying the final warning message.



Select **No** to exit the Uninstall Process.



## Accounts Receivable Multi-Currency

### 33

---

Select **Yes** to continue with the Uninstall Process. At this point, the DSD Enhancement will be removed from the Sage 100 system.

After completion of the Uninstall, the following message box will appear. Select OK to continue.



Now that the Uninstall process is completed, you must:

- Reinstall the applicable standard Sage 100 modules
- Reinstall the latest Sage 100 Service Pack/Updates, if applicable.
- Reinstall any other DSD Enhancements or Developer products that are affected from the reinstallation of the standard Sage 100 module(s).