



DSD
BUSINESS SYSTEMS

DSD Business Systems

Sage 100 Enhancements

APMU

Accounts Payable Multi-Company

Version 5.00



Information in this document is subject to change without notice.

Copyright 1993-2013, DSD Business Systems All rights reserved.

Accounts Payable Multi-Company User's Manual
Version 5.00

29 August, 2014

DSD Business Systems
5120 Shoreham Place
Suite 280
San Diego, CA 92122
858/550-5900 8:00am to 5:00pm PST
858/550-4900 Fax

Trademarks

ProvideX® is a Trademark of Sage Software.

Windows is a trademark of Microsoft Corporation.

Sage 100® is a registered trademark of Sage Software.

PXPlus® is a registered trademark of PVX Plus technologies

All other product names and brand names are service marks, and/or trademarks or registered trademarks of their respective companies.

This documentation and the software described herein, is prepared and published under license. Sage Software has not tested or verified either the software or any representation in this documentation regarding the software. Sage Software does not make any warranty with respect to either this documentation or the software described herein, and specifically disclaims any warranty, express or implied, with respect hereto, including the warranties of fitness for a particular purpose and merchantability.

Table of Contents

SECTION A: INTRODUCTION	6
WEB RESOURCES	6
SUPPORT	6
ACCOUNTS PAYABLE MULTI-COMPANY FEATURES	7
LIMITATIONS	8
REPORTS	8
SECTION B: GETTING STARTED	9
REQUIRED LEVELS	9
INSTALLATION	9
DSD ENHANCEMENT CONTROL PANEL	11
SECTION C: SETUP	13
APMU OPTIONS	13
INTER-COMPANY ACCOUNT MAINTENANCE	14
SECTION D: SYSTEM OPERATIONS	16
A/P INVOICE DATA ENTRY	16
JOB COST DAILY JOB TRANSACTION REGISTER	20
A/P MANUAL CHECK ENTRY	21
A/P REPETITIVE INVOICE ENTRY	22
SYSTEM DATE CONSIDERATIONS	23
A/P TRIAL BALANCE REPORT	23
A/P EXPENSE BY G/L ACCOUNT REPORT	24
INVOICE HISTORY REPORT	24
DAILY TRANSACTION REGISTERS	25
USING COMPANY COPY WITH APMU	26
SECTION E: WHAT'S NEW?	27
VERSION 3.61	27
VERSION 3.70	27
VERSION 3.71 – 08/01/2003	27
VERSION 3.71 – REVISION 05/28/2004	27
VERSION 4.00	27
VERSION 4.05-4.10	27
VERSION 4.20	27
VERSION 4.30	27
VERSION 5.00	27

Accounts Payable Multi-Company	5
---------------------------------------	----------

SECTION E: UNINSTALL DSD ENHANCEMENTS	28
--	-----------

LICENSE AGREEMENT	31
--------------------------	-----------

FAX TRANSMITTAL FORM	33
-----------------------------	-----------

Section A: Introduction

This manual contains a description and instructions for this DSD product. Operating instructions are included for the features added by this product to Sage 100. For instructions on using Sage 100, refer to the appropriate Sage 100 manual, or call your Sage 100 reseller. DSD Business Systems offers excellent Sage 100 support, at an hourly rate.

Web Resources

DSD web site: <http://www.dsdinc.com>

The Enhancement page contains:

- Current Release Schedule*
- Purchasing Information*
- Installation Instructions*
- Product Support*
- Enhancement Links*

APMU Accounts Payable Multi-Company:

<http://www.dsdinc.com/enh/pages/APMU.htm>

The product web page contains:

- Product Description*
- Web Links*
- Current Product Version Table*
- Product Installation File Download*
- Product Manual in .pdf Format*
- Revision History*
- FAQ*

Support

DSD provides product support through Sage 100 resellers. Support is provided for the current version. Older versions are supported at an hourly rate. DSD's telephone number is **858-550-5900**. Fax: **858-550-4900**.

For a hard error, where the program displays an error dialog, report:

- Error number.*
- Program name.*
- Line number.*
- Program version.*

*Exact sequence that caused the error, including menus and menu selections.
Other pertinent information.*

If leaving a message or faxing, please include:

Your name.

Your phone number (and fax if applicable) and extension.

It is possible to be unable to duplicate a problem, because of data corruption or because we have not exactly duplicated a particular operating environment. In such circumstances, we can only continue to try to fix the problem if we can either access the system with Symantec PCAnywhere or by some other means access or duplicate the system.

Accounts Payable Multi-Company Features

APMU has been designed to allow a managing company's Accounts Payable Department to process A/P transactions for an unlimited number of "subsidiary" companies.

Invoices may be distributed to other companies that have a Sage 100 General Ledger database. Each line item entry of an Invoice contains a new Company Code field. This new field defaults to the Current Company. It may be changed to any other company that has been setup for Inter-company processing.

When an Inter-company Distribution is made, the Open Invoice is entered into the Current Company's Aging. A General Ledger transaction is written to the other company's Daily Transaction File, containing a debit to that other company's expense account, and a credit to the predefined Inter-company Allocation account. A pair of Inter-company Allocation Accounts must be set up for each company, which has been setup for Inter-company processing.

During line entry for an Inter-company Allocation, the General Ledger Account Format, and the <F2> List Mode feature reflects the Chart of Accounts and the number format for the other company.

Inter-company Allocations are also available in Repetitive Invoice Line Entry.

Allow System Date Override in Invoice Data Entry: When this option is selected (checked), a new System Date header field then appears in Invoice Data Entry. This date can then be set to more accurately and efficiently post Invoice activity to the General Ledger. Normally, all Invoices in a batch are posted to the General Ledger with the same Transaction Date (System Date), regardless of the Invoice Date. If the System Date Override option is activated, the User can specify a unique System Date for each Invoice. This new date will act as the Posting Date for General Ledger Purposes. This feature is not available in Manual Check Entry, because the Check Date serves this same purpose.

Limitations

1. APMU will **not** work for “Parent” companies that have T/B integrated.
2. APMU will work with parent companies that have “Subsidiaries” that have T/B or J/C.
3. Inter-company allocations are not allowed for Time and Billing entries.
4. You cannot use SUDATA to “rename” a company code. You must continue to use the companies that are initially set-up.
5. APMU will not allow Credit Card Vendors to Transfer amounts to subsidiary companies. The Transfer button will be disabled in Invoice Data Entry and Manual Check Data Entry if the company is not the Parent Company.

Reports

APMU changes these reports:

- ◆ **Inter-company Account Listing:** This new report is available through the **Inter-company Account Maintenance Screen**, and lists each of the companies setup for Inter-company Allocations, and the two G/L allocation accounts for each.
- ◆ **Invoice Register:** This existing report has been modified to include the System Date for each Invoice, and the Company Code for each line item.
- ◆ **Invoice Register Posting Recap:** This existing report has been modified to include G/L Inter-company postings, and to sort and subtotal those transactions by Company Code.
- ◆ **Manual Check Register:** This existing report has been modified to include the Company Code for each line item.
- ◆ **Manual Check Posting Recap:** This existing report has been modified to include G/L Inter-company postings, and to sort and subtotal those transactions by Company Code.
- ◆ **Check Printing and Extended Stub Report:** This existing form printing has been modified to include the Company Code for each line item, if you choose to print G/L Distribution.
- ◆ **Check Register:** This existing report has been modified to include the Company Code for each line item, if you choose to print G/L Distribution in A/P Options.
- ◆ **A/P Expense by G/L Account Report:** This new report sorts and prints invoices by G/L Expense Account. The Company Code has been added to the Selection Panel.
- ◆ **A/P Invoice History Report:** This existing report has been modified to include the Company Code for each General Ledger distribution.
- ◆ **A/P Trial Balance Report:** The Company Code has been added to line detail, if **Print G/L Distribution** is selected. A drop box has been added to select a G/L Segment Code. The Company Code and Segment have been added to the Selection Ranges. If a Company and/or Segment range is chosen, all printed amounts associated with the Open Invoice will reflect what percentage of the total they represent.

Section B: Getting Started



- **If you reinstall or upgrade one of the Sage 100 modules listed in the following table, you must also reinstall this Enhancement.**
- Enhancements from different Sage Developers are generally not designed to work together. If installed together, problems are likely to occur.
- **Check with DSD before installing more than one Enhancement.**

Required Levels

Sage 100 Module	Module Required	Required Level
A/P	Y	5.00
P/O	N	5.00

Installation

1. **Back-up:** Exit all Sage 100 sessions. Back-up existing Sage 100 data.
2. **Check Levels:** Sage 100 module levels **must match** those listed above.
3. **Run Enhancement Setup Program:** Save the executable installation program (sent to you or downloaded from our website) in a convenient location on the Sage 100 server. Launch the program from Windows Explorer or by selecting Start/Run, and then browse for the file in the location you saved it. Follow on-screen instructions.
4. **Send your Sage Serial Number to your DSD Representative:** Send your Sage Serial Number to your DSD representative in order for us to send you back the encrypted keys to unlock your system. This serial number can be found in Library Master\Setup\System Configuration, Tab 3. Registration as Serial Number.
5. **Re-Start Sage 100:** Sage 100 will be updated.
6. **Unlock the Enhancement:** DSD Enhancements must be unlocked to run. When any part of the Enhancement is run for the first time, the **DSD Enhancement License Agreement and Activation** window will appear. Follow the steps shown on that window. *You can click the Help button for more detailed instructions.*

Note: On the next page is a screenshot of the DSD Enhancement License Agreement and Activation window.

After accepting the License Agreement, you can then select the type of unlocking that you'd prefer. The choices are File, Web, Demo and Manual Entry.

File Unlock: After receiving your encrypted serial number key file from DSD, and placing that file in the MAS90/SOA directory, selecting this option will unlock all products keys contained in the file. This means you can unlock all enhancements at once using this option.

Web Unlock: If the system that is running the DSD Enhancement *has web access* and you *have sent DSD your Sage Serial number*, you can unlock the Enhancement without assistance using Web Unlock. When this option is selected, the program will attempt to download encrypted serial number key file from DSD *and then proceed to unlock all enhancements contained in the file*.

- The Sage 100 system that is being used must have web access for this option to be effective.
- You can send your Sage Serial Number to your DSD Enhancements sales representative.

Demo Unlock: If a Demo mode is available for the Enhancement you're running, you will be able to Demo unlock the product without assistance from DSD for demo purposes.

- Creating a Demo Unlock is a good way to temporarily unlock DSD Enhancements off-hours, if you do not have web or email access. Later, you can unlock the product fully, during business hours.

DSD Enhancement License Agreement and Activation

License Agreement

YOU MUST READ THIS AGREEMENT COMPLETELY AND AGREE BEFORE PROCEEDING. SCROLL THROUGH THIS AGREEMENT USING THE SLIDER CONTROL.

IMPORTANT: THIS SOFTWARE IS LICENSED BY DSD BUSINESS SYSTEMS, INC. TO CUSTOMERS FOR THEIR USE ONLY IN ACCORDANCE WITH THE TERMS SET FORTH IN THIS CUSTOMER LICENSE AGREEMENT. OPENING OR USING THIS PACKAGE CONSTITUTES ACCEPTANCE OF THESE TERMS. IF THE TERMS OF THIS LICENSE ARE NOT ACCEPTABLE, THE CUSTOMER MAY OBTAIN A FULL REFUND OF ANY MONEY PAID IF THIS UNUSED, UNOPENED PACKAGE IS RETURNED WITHIN TEN (10) DAYS TO THE DEALER FROM WHICH IT WAS ACQUIRED.

1 Agree to License Agreement

☒ Agree ☐ Disagree

2 Select Unlocking Type

☐ Web ☐ File ☐ Demo ☒ Manual Entry

3 Call DSD at 858-550-5900

Have this information ready: End User Name: DSD Business Systems
Serial Number: 0555188

4 Enter the following from DSD

Activation Key:

Click to Unlock:

ABC 4/28/2010

Manual Entry Unlock: If you want to unlock a single enhancement using a single encrypted key, you can select this option and enter the 64 character key you receive from DSD by copy and paste.

Note: You can also unlock a DSD Enhancement through the **DSD Enhancement Control Panel** found on the **Library Master Utilities Menu**. Then, select the Enhancement with your mouse from the list of Enhancements and click the **Unlock Product** button on the right side of the window.

- Convert Data:** After registration, the Data Conversion window will appear. Follow on-screen instructions to complete data conversion. You can exit the conversion program without converting data. The Enhancement will not proceed, however, until data is converted. If you enter an enhanced program and data has not been converted, the conversion program will run again.

DSD Enhancement Control Panel

Starting with version 3.61, all DSD Enhancement products include DSD's Enhancement Control Panel. The **DSD Enhancement Control Panel** is accessed from the **Library Master Utilities** menu.

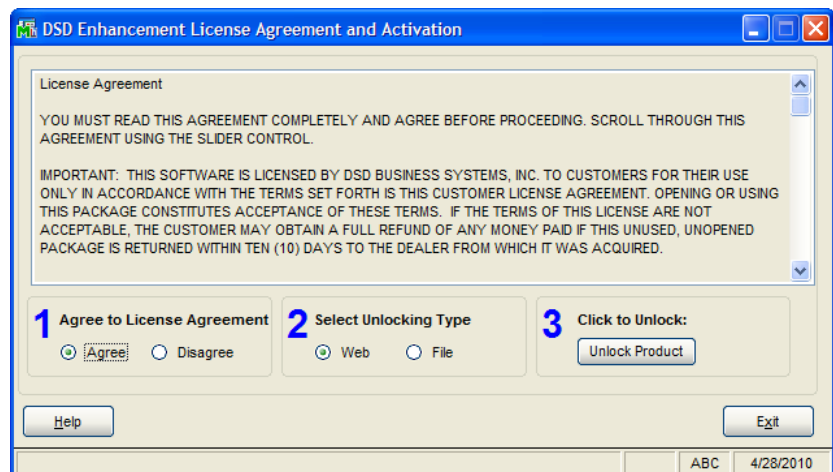
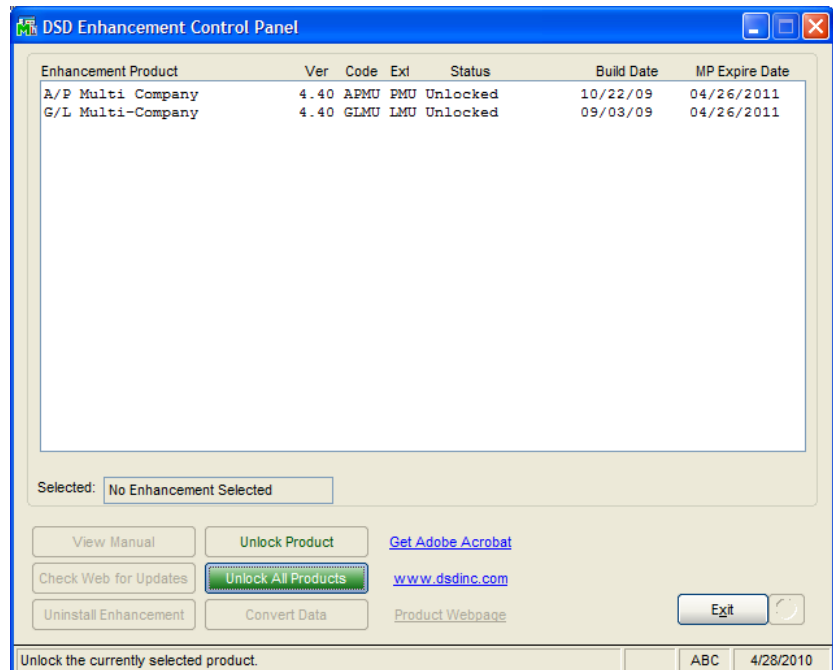
The DSD Enhancement Control Panel is a simple to use yet powerful system to help maintain DSD Enhancements installed on a Sage 100 system. To use it, select an Enhancement product from the list on the window and then click the button, on the right side of the window, which corresponds with the desired task.

View Manual: This button will display the product manual for the selected Enhancement using Adobe Acrobat. For this to be possible, the PDF file for the corresponding manual must be in the "MAS90/PDF" folder in the Sage 100 system. If the file is not present, and the system has web access, the correct PDF file will be automatically downloaded from the DSD website, put into the "MAS90/PDF" folder and then displayed.

Check the Web for Updates: This button will check the DSD website to see what the current build is the selected Enhancement and alert the user if a later version is available. *This requires an ftp web connection on the Sage 100 system.*

Unlock Product: This will cause the DSD Enhancement License Agreement and Activation window to appear. Using this window is described on the previous page. *This button is disabled if the selected Enhancement is already unlocked.*

Unlock All Products: This will cause the DSD Enhancement All License Agreement and Activation window to appear. This window is similar to the one described on the previous page, but has only web and file as options to unlock. *This button is never disabled.*



Convert Data: After verification, the selected Enhancements data conversion program will run. Data conversion is non-destructive, and may be triggered any number of times. Sometimes this is required to fix data records imported or updated from a non-enhancement installation.

Help: The Help button, located at the bottom right of the window, opens an HTML help file .

Get Adobe Acrobat: Opens the Adobe Acrobat website to the page where Acrobat can be downloaded and installed.

Uninstall Enhancement If this option is available, then selecting this button will start the un-install process, removing the enhancement from the system.

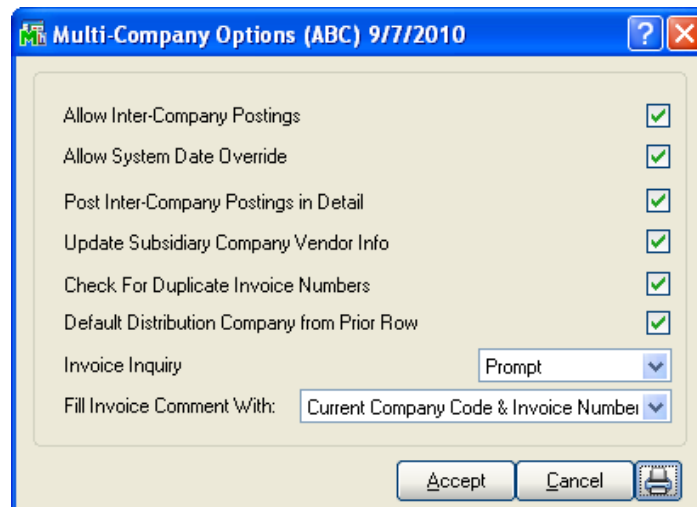
There are also links to the DSD website and the Enhancement page on that site.

Section C: Setup

APMU Options

Starting with version 4.30, **Multi-Company** options have been removed from the Accounts Payable Options screen and added as a menu item on the Accounts Payable Setup menu.

Select this menu item to pop-up the **Multi-Company Options** panel.



Allow Inter-company Postings: Selecting this option causes the new **Company Code** field to appear on each line item of **Repetitive Invoice**, **Invoice** and **Manual Check Entry**. To process Inter-company Payables, each company must be setup in the new **Inter-company Maintenance Screen**, which is described in this section.

Note: This feature is not available if **Accounts Payable** has been integrated with **Time and Billing**.

Allow System Date Override: When this option is selected (checked), a new System Date header field then appears in Invoice Data Entry. This date can then be set to more accurately and efficiently post Invoice activity to the General Ledger. Normally, all Invoices in a batch are posted to the General Ledger with the same Transaction Date (System Date), regardless of the Invoice Date. If the System Date Override option is activated, the User can specify a unique System Date for each Invoice. This new date will act as the Posting Date for General Ledger Purposes. This feature is not available in Manual Check Entry, because the Check Date serves this same purpose.

Note: This feature is not available if the **Accounts Payable** module has been integrated with **Time and Billing**.

Post Inter-Company Postings in Detail: Selecting this option posts inter-company postings to the General Ledger in Detail. Clearing this option posts inter-company postings to the General Ledger in Summary.

Update Subsidiary Company Vendor Info: Check this box to have the Vendor Totals information (Purchases, Payments, Last Purchase Date, Last Payment Date, Last Check Number, and Last Check Amount on the Statistics, Summary, and History tabs in Vendor Inquiry) updated to the Subsidiary companies of the Invoice Header. If you check this box, each Subsidiary company must have an active Accounts Payable with the appropriate vendor number(s) defined. No update will occur to the Subsidiary Vendor's 1099 file.

Note: This feature is not available if the **Multi-Currency Accounts Payable** module has been installed.

Check for Duplicate Invoice Numbers: Check this box if you want to check for duplicate Invoice Numbers. You will be warned if a duplicate invoice number is found in any of the Subsidiary Companies. Leave this box unchecked if you do not want to use this option. If you check this box, each Subsidiary company must have an active Accounts Payable with the appropriate vendor number(s) defined.

Default Distribution Company from Prior Row: Check this box to have the company code in Invoice Data Entry or Manual Check Entry default from the last valid company code entered during the current data entry session.

Invoice Inquiry: Select 'Enhanced' if you want a Company Code column added to Vendor Invoice Inquiry. Select 'Prompt' if you want to be prompted to select Standard Invoice Inquiry or Enhanced Invoice Inquiry. Select 'Standard' if you do not want the Company Code column.

Fill Invoice Comment With: Select 'With Default Company Code' if you want to default the first 3 characters of the invoice comment to the Default Company Code. Select 'With Current Company Code & Invoice Number' if you want to default the invoice comment to the current Company Code and Invoice Number. Select 'No' if you do not want to use this option.

Inter-company Account Maintenance

The **Inter-company Account Maintenance** window has been created to allow the various companies on the system to be accessed during Invoice and Manual Check Line Entry. These companies need not have Accounts Payable databases setup **if they do not have divisions or use discounts**, but each must have a General Ledger and Chart of Accounts.

For each company activated, the User must define a **G/L Debit Account** and a **G/L Credit Account**. The debit account is normally a Current Assets account, and it can be thought of as a "Due From" account. When an Invoice is entered into the **ABC Company**, which is to be expensed to the **ABX Company**, the invoice amount

A/P Intercompany Account Maintenance (ABC) 10/20/2010

Company Code: ABX

American Business Expressions

ABC	Company G/L Debit Acct	111-00-00	Due From Subsidiary
ABX	Company G/L Credit Acct	20100-04-000-000-000	Due to Corporate

Buttons: Accept, Cancel, Delete, Print

will be entered as a credit to the **ABC** Company's Accounts Payable, and this account (the "Due From" account) will be debited with the full amount. It is quite common for the **ABX** Company to write a check, reimbursing the **ABC** Company for the balance in this G/L Account.

When an Inter-company line is posted, the expense account entered in Invoice entry, for the other company, is debited, and the **G/L Credit Account** is credited. This account is normally a **Current Liability Account**, and can be thought of as a "Due To" account (to the company into which the Invoices were entered).

Section D: System Operations

A/P Invoice Data Entry

If you have batch processing enabled, the default company code can be set in the Batch Entry window via the 'Company' button. The field will default to the current company code and will become the default invoice header company code for each invoice entered within this batch. Your only access to this field will be via the 'Company' button each time you access batch processing.

The screenshot shows two windows. The main window is titled "A/P Invoice Data Entry Batch". It contains fields for Batch Number (00001), Comment, and Private Batch (unchecked). There are buttons for Modify..., Verify, Renumber..., and Merge... Below these are Status (Available) and Entries (0). A table shows the batch summary:

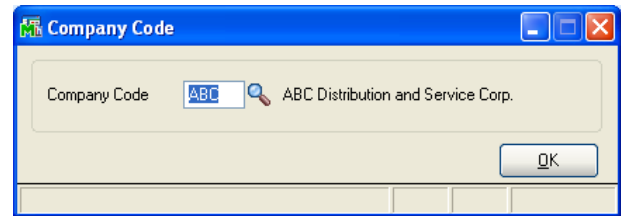
	Total	Amount
1 Invoice Amount		.00
2 Net Amount		.00
3 Discounts		.00
4 Prepayments		.00

At the bottom of the batch window is a "Company" button. Overlaid on this is a "Company Code" dialog box. It has a "Company Code" field with "ABC" entered, a search icon, and the text "ABC Distribution and Service Corp.". There is an "OK" button at the bottom right of the dialog.

Invoice Entry has been modified with a 'Company' button at the bottom of the screen.

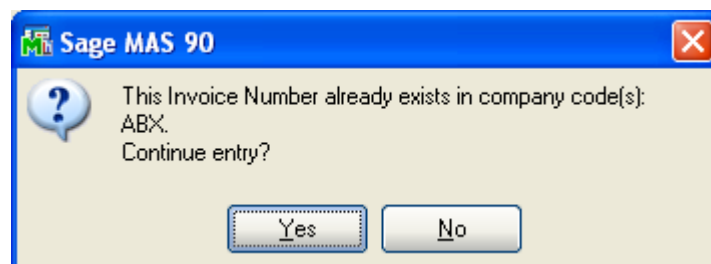
The screenshot shows the "A/P Invoice Data Entry (ABC) 9/7/2010" window. It contains fields for Vendor No. (01-AIRWAY), Name (Airway Property), Invoice No. (09071001), and Batch (00001). There are buttons for Vendor... and a "Company" button at the bottom. The window is divided into two tabs: "1. Header" and "2. Lines". The "1. Header" tab is active, showing fields for Invoice Date (9/7/2010), Invoice Amount (1,000.00), Subject to Discount (1,000.00), Prepaid Invoice, Terms Code (02), Invoice Due Date (10/7/2010), Discount Due Date (9/17/2010), Discount Amount (20.00), Hold Payment (unchecked), Separate Check (unchecked), System Date (9/1/2010), Comment, and 1099 Payment (Form: None, Box:).

Click the 'Company' button to access the default header company code of this invoice. This field defaults from the company code specified on the batch processing screen or to the current company code if batch processing is not enabled.



If you specified to 'Fill Invoice Comment' in Setup, then the Invoice Header Comment field will be set to the header Company Code or the header Company Code & Invoice Number as you leave the header tab and the comment field is blank. The program will not overwrite the header comment if it contains a value.

If you checked the 'Check for Duplicate Invoice Numbers' option in Setup, all valid subsidiary companies will have their Open Invoice File, and the un-updated entries in Invoice Entry and Manual Check Entry files scanned for any duplicate invoice numbers for that same vendor. If a duplicate invoice exists, a pop-up window will appear, displaying the company codes with duplicate invoices .



You can click either on 'Yes' to proceed or 'No' if you want to reenter the invoice number.

This enhancement does not create invoices in Subsidiary companies. The only time a duplicate invoice would be found is if data entry was performed in another company.

If Inter-company processing has been selected and the **Allow System Date Override** option has been checked in **APMU** options, a new 'System Date' header field will be available in Invoice Data Entry. This date can then be set to more accurately and efficiently post Invoice activity to the General Ledger. Normally, all Invoices in a batch are posted to the General Ledger with the same Transaction Date (System Date), regardless of the Invoice Date. If the System Date Override option is activated, the User can specify a unique System Date for each Invoice. This new date will act as the Posting Date for General Ledger Purposes.

Invoice Date	9/7/2010	Terms Code	02 2% 10 DAYS, NET 30 DAYS
Invoice Amount	750.00	Invoice Due Date	10/7/2010
Subject to Discount	750.00	Discount Due Date	9/17/2010
Prepaid Invoice		Discount Amount	15.00
		Hold Payment	<input type="checkbox"/> Separate Check <input type="checkbox"/>
		System Date	090710
		Comment	
		1099 Payment	

If Inter-company processing has been selected, a new **Company** field will appear just before the G/L Account on the Lines panel. This field will at first default to the current company. If you checked 'Default Distribution Company from Prior Row' in Setup, the company code in Invoice Data Entry, Repetitive Invoice Entry or Manual Check Entry will default from the last valid company code entered during the current data entry session.

Note: If you select a "Subsidiary" company, the Transfer function is disabled.

A/P Invoice Data Entry (ABC) 9/7/2010

Vendor No. 01-LISA Batch 00004 Vendor...

Name Legal Institute of Santee

Invoice No. 958463

1. Header 2. Lines

Quick Row 5

	Company	G/L Account	Amount	Comment
1	ABC	540-10-03	500.00	ABC INV: 958463
2	ABX	76000-01-000-000-100	250.00	ABC INV: 958463
3	EEC	645-00-00	750.00	ABC INV: 958463
4	XYZ	540-000-300	500.00	ABC INV: 958463
5	XYZ		.00	ABC INV: 958463

Description

Distribution Balance 0.00 Total 2,000.00

Company Accept Cancel Delete Print Help

If Job Cost is integrated with Accounts Payable in the current Company, the Job related fields will be available but only when the company on the line has their Accounts Payable integrated with Job Cost. The Job Number, Cost Code, and Cost Types will validate according to the data files of the company code on the line. The initial row's retention rate will default from the vendor masterfile of the subsidiary company on the row.

A/P Invoice Data Entry (EEC) 9/7/2010

Vendor No. 01-COCHRAN Vendor...

Name Cochrane's Concrete Coring

Invoice No. 09071002

1. Header 2. Lines

Quick Row 3

	Company	Job Number	G/L Account	Cost Code	Type	Unit Cost	Units	Amount	Comment
1	EEC	EEC2140	143-00-00	100-020-000	Material	25.0000	8.0000	200.00	EEC INV: 09071002
2	EEC	EEC2140	142-00-00	100-020-000	Equipmen	50.0000	6.0000	300.00	EEC INV: 09071002
3	EEC					.0000	.0000	.00	EEC INV: 09071002

G/L Acct Desc Retention Rate .00 % Retention Amt .00

Distribution Balance 0.00 Total 500.00

Company Accept Cancel Delete Print Help

A sample Invoice Register is shown below. Note that it contains the new System Date field for each Invoice, and the new Company Code field for each line item.

Accounts Payable Invoice Register

Journal Posting Date: 9/7/2010

Register Number: AP-000020

Batch Number: 00004

ABC Distribution and Service Corp. (ABC)

Division Number: 01 TRADE ACCOUNTS PAYABLE

Vendor Number/ Invoice Number	Invoice	Dates Due	Discount	Batch Number	Invoice Amount	Discount	Distribution Amount
AIRWAY	Airway Property						
	Comment: ABC INV: 09071001						
09071001	9/7/2010	10/7/2010	9/17/2010	00004	1,000.00	20.00	
System Date:	9/1/2010						
ABC	G/L Account	555-00-03		Rent			100.00
	Comment: ABC INV: 09071001						
ABC	G/L Account	555-10-03		Rent: SA&MK-CENTR			200.00
	Comment: ABC INV: 09071001						
EEC	G/L Account	540-00-00		Rent			300.00
	Comment: ABC INV: 09071001						
ABX	G/L Account	74000-01-000-000-100		Rent/Lease Exp: Irvine-Main-Sa			250.00
	Comment: ABC INV: 09071001						
XYZ	G/L Account	555-000-300		Rent			150.00
	Comment: ABC INV: 09071001						
LISA	Legal Institute of Santee			1099 Form: M Box: 1			
	Comment: ABC INV: 958463						
958463	9/7/2010	10/7/2010	9/17/2010	00004	2,000.00	40.00	
System Date:	9/2/2010						
ABC	G/L Account	540-10-03		Telephone expense: SA&MK-CENTR			500.00
	Comment: ABC INV: 958463						
ABX	G/L Account	76000-01-000-000-100		Telephone: Irvine-Main-Sales			250.00
	Comment: ABC INV: 958463						
EEC	G/L Account	645-00-00		Telephone Expense			750.00
	Comment: ABC INV: 958463						
XYZ	G/L Account	540-000-300		Telephone Expense			500.00

When the Invoice register is finished, the A/P Posting Recap is run automatically. If Inter-company processing is not being used, then this report will be sorted and subtotaled by Division, as before. If Inter-company processing has been selected, then this report will sort and subtotal by Company Code, as shown below:

Accounts Payable Invoice Register - Recap By Division

Journal Posting Date: 9/7/2010

Register Number: AP-000020

Batch Number: 00004

ABC Distribution and Service Corp. (ABC)

ABC

Division Number: 01 TRADE ACCOUNTS PAYABLE

G/L Account	Description	Debit	Credit
111-01-00	Due from ABX	500.00	
111-02-00	Due from EEC	1,050.00	
111-03-00	Due from XYZ	650.00	
200-01-00	Accounts payable - trade		3,750.00
450-02-02	Freight - West	750.00	
540-10-03	Telephone expense: SA&MK-CENTR	500.00	
555-00-03	Rent	100.00	
555-10-03	Rent: SA&MK-CENTR	200.00	
Division 01 Total:		3,750.00	3,750.00

ABX

Division Number: 01 TRADE ACCOUNTS PAYABLE

G/L Account	Description	Debit	Credit
20100-01-000-000-000	Due to AB C		500.00
74000-01-000-000-100	Rent/Lease Exp.:Irvine-Main-Sa	250.00	
76000-01-000-000-100	Telephone:Irvine-Main-Sales	250.00	
Division 01 Total:		500.00	500.00

EEC

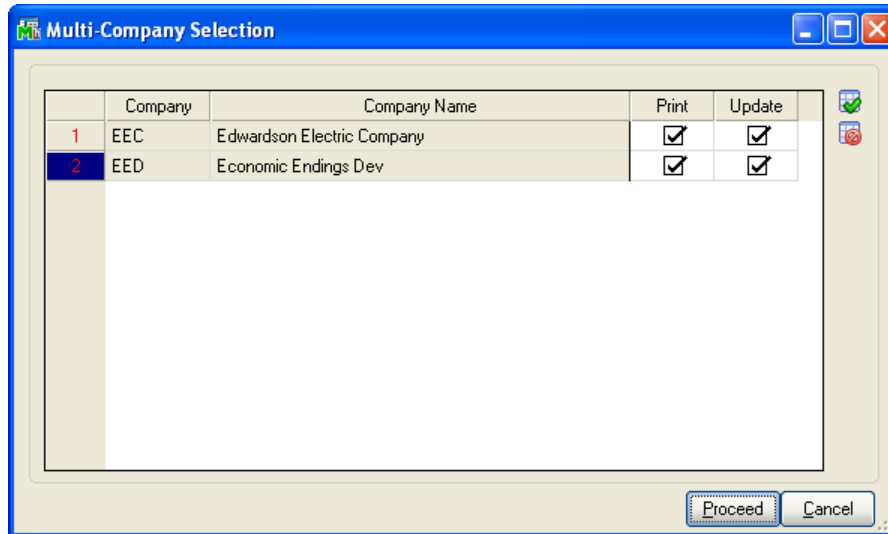
Division Number: 01 TRADE ACCOUNTS PAYABLE

G/L Account	Description	Debit	Credit
201-01-00	Due to AB C		1,050.00
540-00-00	Rent	300.00	
645-00-00	Telephone Expense	750.00	
Division 01 Total:		1,050.00	1,050.00

If 'Update Subsidiary Company Vendor Info' was specified in Setup, the Purchases & Last Purchase Date, will be updated in the vendor file of the subsidiary company for each distribution line in addition to the update of the full invoice amount to the agent vendor.

Job Cost Daily Job Transaction Register

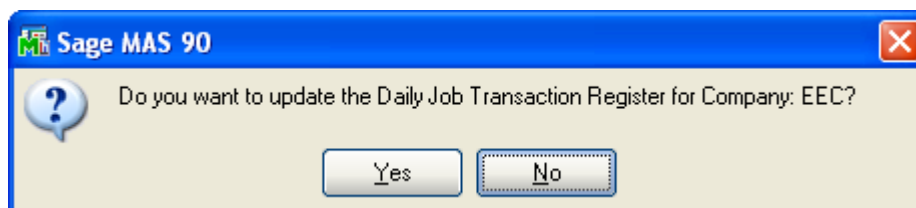
If any subsidiary company references a Job Number on a line you will be prompted with a selection screen to print and update the Multi-Company Job Transaction Register.



The window will be preloaded with each subsidiary company that had an entry in the Manual Check Register or A/P Invoice Register referencing a Job Number. You can select/deselect companies from within this pop-up. When you click 'Proceed,' the program will print each of the Job DTRs as if they were being printed from within that Company Code from the A/P module. If you are not authorized to update the daily transaction register in the JC module in a company, that company will be listed in red and cannot be selected to update.

Once you have clicked 'Proceed,' the program will lock A/P Invoice Register update and Manual Check Register update for all of the Company codes that will have a Job DTR printed.

After the registers have printed, you will see an update prompt for each selected company:



Answer 'Yes,' to update the Job DTRs from each of the companies from which a register printed and the update box was checked, and the file locks will be removed.

If you select 'No' for either question, you can invoke the pop-up via the Daily Transaction Register menu option.

A/P Manual Check Entry

In **Manual Check Entry**, the G/L Distributions window has been modified with a **Company** column in the lines panel and a **Company** entry field. This field will at first default to the current company, and if overridden, to the Company Code most recently entered. This column and field will appear if **Allow Inter-Company Postings** has been checked in the **APMU** options.

Note: If you select a “Subsidiary” company, the Transfer function is disabled.

General Ledger Distribution

Quick Row: 4

	Company	G/L Account	Amount	Comment
1	ABC	565-00-03	55.00	ABC INV: 101102
2	EEC	675-00-00	110.00	ABC INV: 101102
3	ABX	79000-01-000-000-000	100.00	ABC INV: 101102
4	ABX		.00	

Description:

Distribution Balance: 0.00 Distribution Total: 265.00

Accept Cancel ?

The Manual Check Register and Recaps have been modified in a manner similar to the Invoice register and Recaps. The Manual Check Register and Recap are shown below.

Manual Check and Payment Register
Journal Posting Date: 9/9/2010
Register Number: MC-000005

Bank: D Wells Fargo Checking

ABC Distribution and Service Corp. (ABC)

Check Number/ Invoice Number	Check Date/ Invoice Date	Vendor Number	Invoice Amount	Discount	Distribution Amount	Check Amount
000012	9/10/2010	01-LISA	Legal Institute of Santee			1,000.00
Check Comment: Monthly payment						
101101	9/8/2010		750.00	15.00 (ON FILE)	750.00	
1099 Form: M Box: 1						
Invoice Comment: ABC INV: 101101						
101102	9/10/2010		265.00	0.00		
1099 Form: M Box: 1						
ABC	G/L Account: 565-00-03		Miscellaneous expense		55.00	
Comment: ABC INV: 101102						
EEC	G/L Account: 675-00-00		Miscellaneous Expense		110.00	
Comment: ABC INV: 101102						
ABX	G/L Account: 79000-01-000-000-000		Misc. Expense-Irvine-Main		100.00	
Check 000012 Total: _____						
Bank D Total: _____						
Report Total: _____						

Accounts Payable Manual Check and Payment Register - Recap By Division
Journal Posting Date: 9/9/2010
Register Number: MC-000005

ABC Distribution and Service Corp. (ABC)

ABC
Division Number: 01 TRADE ACCOUNTS PAYABLE

G/L Account	Description	Debit	Credit
101-01-00	Cash in bank - Reg. checking		1,000.00
111-01-00	Due from ABX	100.00	
111-02-00	Due from EEC	110.00	
200-01-00	Accounts payable - trade	750.00	
565-00-03	Miscellaneous expense	55.00	
950-01-04	Discounts earned		15.00
Division 01 Total:		1,015.00	1,015.00

ABX
Division Number: 01 TRADE ACCOUNTS PAYABLE

G/L Account	Description	Debit	Credit
20100-01-000-000-000	Due to ABC		100.00
79000-01-000-000-000	Misc. Expense-Irvine-Main	100.00	
Division 01 Total:		100.00	100.00

EEC
Division Number: 01 TRADE ACCOUNTS PAYABLE

G/L Account	Description	Debit	Credit
201-01-00	Due to ABC		110.00
675-00-00	Miscellaneous Expense	110.00	
Division 01 Total:		110.00	110.00

If 'Update Subsidiary Company Vendor Info' was specified in Setup, the Purchases & Last Purchase Date will be updated in the vendor file of the subsidiary company for each distribution line in addition to the update of the full invoice amount to the parent company vendor. The Payments, Last Payment Date, Last Check Number, and Last Check Amount fields will be updated in the vendor file of the subsidiary company of the invoice header and the parent company vendor.

A/P Repetitive Invoice Entry

Invoice Entry has been modified with a 'Company' button at the bottom of the screen.

Repetitive Invoice Line Entry has been modified to accept the Company Code. If this option has been selected in the **APMU** Options screen, Repetitive Invoice Line Entry behaves identically to Invoice Data Entry.

	Company	G/L Account	Amount	Comment
1	ABC	530-10-03	100.00	ABC INV:
2	EEC	535-00-00	200.00	ABC INV:
3	ABX	62200-00-000-000-000	200.00	ABC INV:
4	ABX		.00	

System Date Considerations

The **APMU** module checks the System Date for compatibility with the Current Company's General Ledger module. It does not, however, check other companies for System Date compatibility, if inter-company allocations are being made. In other words, if a System Date of 12/31/2000 is entered into an Invoice Header, the programs check the current company's General Ledger module, to confirm that 12/31/2000 is not a prior period.

If lines are subsequently entered into that Invoice that contain other Company codes, the Invoice Line Entry program does not check each Company's General Ledger to see if 12/31/2000 is a prior period. That would slow down line entry considerably. It is up to the user and accounts payable supervisor to ensure that all companies' General Ledgers are maintained consistently, with regard to Period End closing.

A/P Trial Balance Report

This report has been modified to include a new Company Code field to line detail. The Company Code and Segment have been added to the Selection Ranges. If a Company and/or Segment range is chosen, all printed amounts associated with the Open Invoice will reflect what was posted to that Company Code/GL Account.

Accounts Payable Trial Balance (ABC) 9/9/2010

Report Setting: STANDARD [Save]

Description: Accounts Payable Trial Balance

Setting Options

Type: Public [v] Print Report Settings: [] Number of Copies: 1 [v]
 Default Report: [x] Three Hole Punch: [] Collated: [x]

Options

Invoices to Print: Open [v]
 Print Trial Balance as Of: 9/9/2010 [v]
 Print Transaction Detail: [x]
 Print G/L Distribution: [x]
 Print 1099 Information: []

Selections

Select Field	Operand	Value
Vendor Number	All	
Department	All	
Location	All	
Company Code	All	

Keep Window Open After: [] Print [] Preview [] [Print] [Preview] [Setup] [Help]

Accounts Payable Trial Balance

All Open Invoices as of 9/9/2010

AB C Distribution and Service Corp. (AB C)

Division Number: 01 TRADE ACCOUNTS PAYABLE

Vendor/ Invoice Number	Dates		Discount	Held	Invoice Amount	Discount Amount	Invoice Balance	Type	Date	Transaction Amount	Check Number	Check Date
USA Legal Institute of Santee												
101101	9/8/2010	10/8/2010	9/18/2010	No	750.00	15.00	750.00	INV	9/1/2010	750.00		
	Company: ABC		G/L:							Advertising expenses		275.00
		EEC			640.00-00					Advertising Expense		100.00
		XYZ			735.000-400					Advertising Expenses		375.00
10151001	9/8/2010	10/8/2010	9/18/2010	No	1,000.00	20.00	1,000.00	INV	9/8/2010	1,000.00		
	Company: ABC		G/L:							Legal & Professional Invt-Main		250.00
		ABC			735-00-04					Advertising expenses		300.00
		EEC			660-00-00					Travel & Entertainment		400.00
		XYZ			735-000-400					Advertising Expenses		50.00
456789	9/7/2010	10/7/2010	9/17/2010	No	954.62	19.09	954.62	INV	9/7/2010	954.62		
	Company: ABC		G/L:							Equipment maintenanc-EAST		500.00
		ABC			525-00-01					Equipment maintenanc-WEST		100.00
		ABC			525-00-02					Equipment maintenance		150.00
		ABC			525-00-04					Equipment maintenanc-CORP		204.62
958463	9/7/2010	10/7/2010	9/17/2010	No	2,000.00	40.00	2,000.00	INV	9/2/2010	2,000.00		
	Company: ABC		G/L:							Telephone expense: SA&MK-CENTR		500.00
		ABC			540-10-03					Telephone Invt-Main-Sales		250.00
		EEC			76000-01-000-000-100					Telephone Expense		750.00
		XYZ			645-00-00					Telephone Expense		500.00
		XYZ			540-000-300					Telephone Expense		500.00
Vendor LISA Totals:					4,704.62	94.09	4,704.62			4,704.62		
Division 01 Totals:					4,704.62	94.09	4,704.62			4,704.62		
Report Totals:					4,704.62	94.09	4,704.62			4,704.62		

A/P Expense by G/L Account Report

This report has been modified to include a new Company Code field in the Selection screen as shown. The user may specify the Company Code, which is used for reporting purposes. When 'All' is selected, the report is sorted grouped by company.

AP Expense by GL Account Report (ABC) 9/9/2010

Report Setting: STANDARD
Description: AP Expense by GL Account Report

Setting Options:
Type: Public
Default Report: ☒
Print Report Settings: ☐
Three Hole Punch: ☐
Number of Copies: 1
Collated: ☒

Sort Report By: Account Number

Options:
Invoices to Print: Open
Print Credit Card Transfers: ☐

Selections:

Select Field	Operand	Value
Account Number	All	
Department	All	
Location	All	
Vendor Number	All	
Vendor Name	All	
Transaction Date	All	
Company Code	All	

Keep Window Open After: ☐ Print ☐ Preview ☒ Setup

Invoice History Report

This report has been modified to include the Company Code associated with each General Ledger Distribution.

Accounts Payable Invoice History Report					
Sorted by Invoice Number					
ABC Distribution and Service Corp. (ABC)					
Invoice Number	Invoice Date	Source	Vendor Number	Name	
09071001	INV 9/7/2010	A/P	01-AIRWAY	Airway Property	
Comp	Account Number	Description	Quantity	Unit Cost/ Hourly Rate	Extension
ABC	555-00-03	Rent			100.00
Comment:		ABC INV: 09071001			
ABC	555-10-03	Rent: SA&MK-CENTR			200.00
Comment:		ABC INV: 09071001			
EEC	540-00-00	Rent			300.00
Comment:		ABC INV: 09071001			
ABX	74000-01-000-000-100	Rent/Lease Exp.:Irvine-Main-Sales			250.00
Comment:		ABC INV: 09071001			
XYZ	555-000-300	Rent			150.00
Comment:		ABC INV: 09071001			
Discount:					20.00
Invoice Total:					980.00
Report Total:					1,000.00

Daily Transaction Registers

Please be aware that although the Accounts Payable Updates prompt the User to run the Daily Transaction Journal, this is the Journal for the current company only, and does not print or post to the General Ledger of another company, whether or not the User just updated inter-company distributions. In order for those inter-company transactions to be updated into the other companies' General Ledgers, **the User must access those other companies individually**, and run the Daily Transaction Register for each.

Using Company Copy with APMU

The user must be extremely careful when using the Company Copy to transfer Invoice entry records between companies. When Invoices are entered into an A/P system in which APMU has been installed, each and every distribution line contains the Company Code to which you're posting that distribution. If you have entered Invoices for the "ABC" Company, and you haven't made any inter-company entries, then all of the lines will naturally be tagged as "ABC" company distributions.

The problem occurs when Company Copy is used to transfer these entries to another company, (for example "XYZ") possibly for testing purposes. SUDATA **does not** change each line's **ABC** Company Code to **XYZ**, so the new XYZ Company now has a batch of invoice entries that are all tagged to post to the ABC Company, **not** to the XYZ Company. **If SUDATA is used for such transfers, the user must access each Invoice Entry record, and change the Company Code field to the correct value.**

Also, when Company Copy is used for a transfer, the Inter-company Account Maintenance file will not be setup correctly for the XYZ Company. It will be setup for the ABC Company, and this will also cause unexpected results.

Visual Integrator Setup

When importing data using Visual Integrator, it's important to set up the Import Job so that the Company Code field exists above the Account field on the Data tab. This is critical for G/L Account validations by company code.

Section E: What's New?

Version 3.61

1. Prior to version 3.61, the **Multi-Company Options** were on a separate Folder in A/P Options. In version 3.61, the Multi-Company Options were moved to a button/pop-up on the additional panel. Please refer to **Section C: Setup** for this change.
2. If the **Systems Date Override** setting in **Multi-Company Options** is set to **Yes**, then the System Date for each invoice is now printed on the A/P Invoice Register.
3. If the **Systems Date Override** setting in **Multi-Company Options** is set to **Yes**, then the System Date is checked to make sure it doesn't fall in a closed GL period during Invoice Data Entry.

Version 3.70

1. Transfer of Invoices from Credit Card Vendors is disabled if you select a "subsidiary" company code during data entry.

Version 3.71 – 08/01/2003

APMU has been enhanced to allow Inter-Company transactions for a company that has Job Cost integrated, except for Manual Check Entry.

The AP Trial Balance has been enhanced to allow selection of a range of Company Code and GL Segment. All numbers associated with the Open Invoice will be re-calculated to print only the amounts attached to the Company Codes/GL Segments in the selected ranges.

Version 3.71 – Revision 05/28/2004

In this revision, APMU has been enhanced for MAS200 SQL.

Version 4.00

In this revision, APMU has been enhanced to handle large G/L Account Numbers and Segments.

Version 4.05-4.10

No new features have been added to this release.

Version 4.20

- * The product has been re-written in the new MAS90 Business Object framework.
- * The "Distribute Discounts to Subsidiary Companies" option has been removed in this release.
- * You now have the ability to do inter-company transactions in Manual Check Entry with Job Cost integrated.

Version 4.30

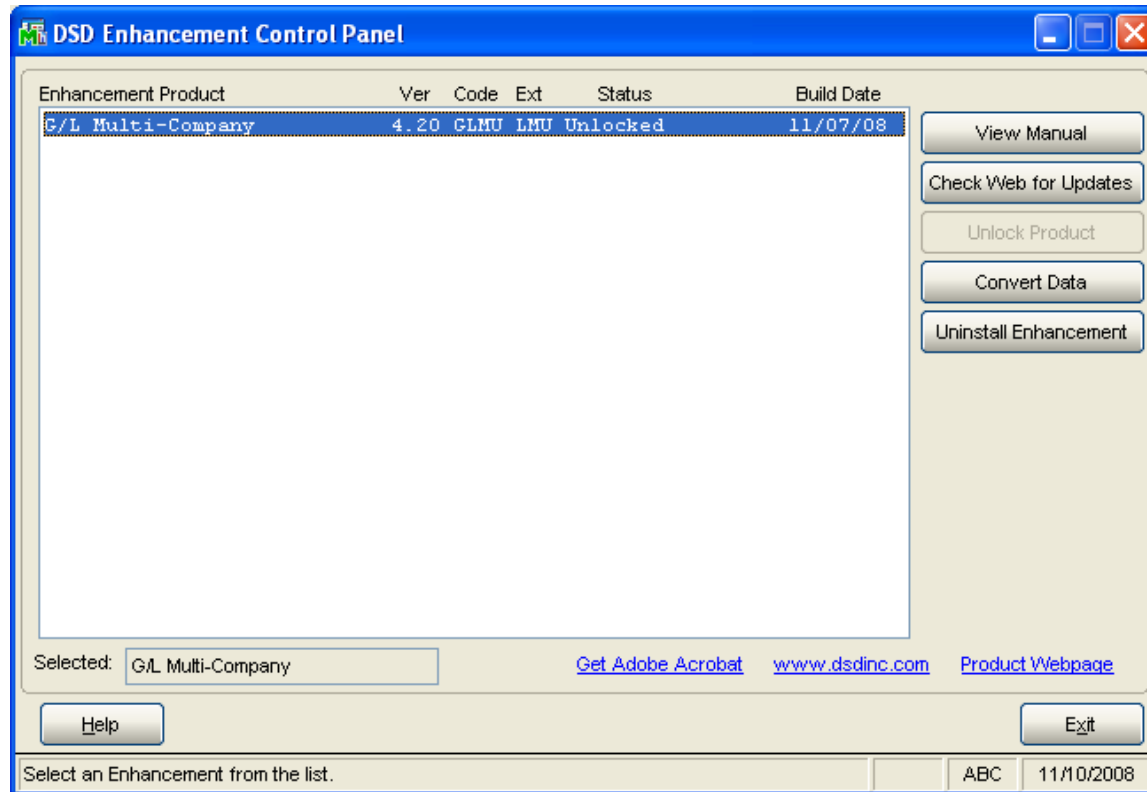
No new features have been added to this release.

Version 4.50

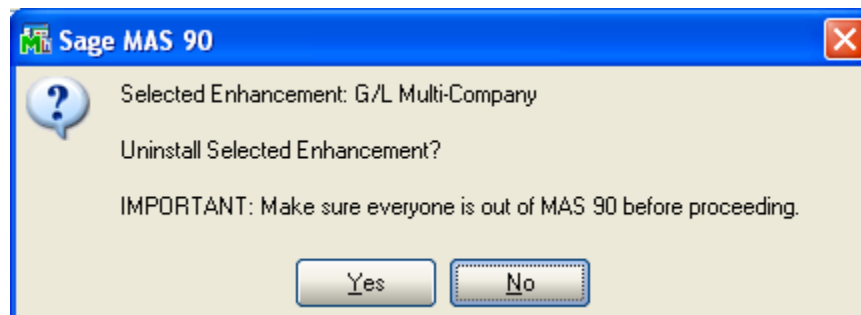
Features from the Extended Solutions AP-1029 have been merged into APMU.

Section E: Uninstall DSD Enhancements

A DSD Enhancements Uninstall Utility has been provided for the purposes of removing DSD Enhancements from your Sage 100 System. This utility may be accessed from the **DSD Enhancement Control Panel** menu option on the **Library Master / Utilities** menu.

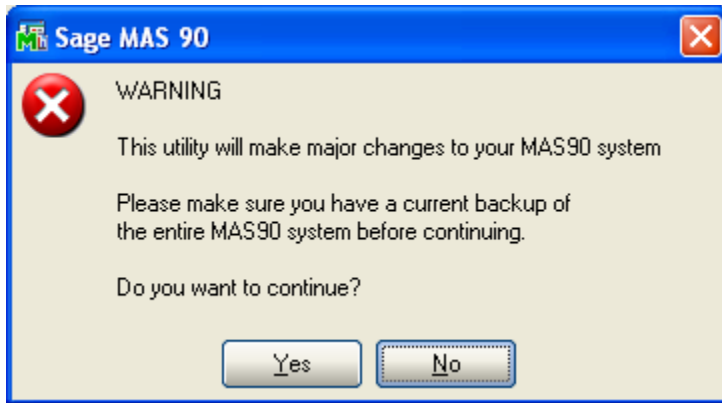


When accessing the **DSD Utility Suite**, select the enhancement that you wish to Uninstall, and then select the **Uninstall Enhancement** button. The following message box will appear:



Select **No** to exit the Uninstall Process.
Select **Yes** to continue with the Uninstall Process.

The following message box will appear, to remind you that a complete backup of your entire Sage 100 system should be completed prior to uninstalling a DSD product.

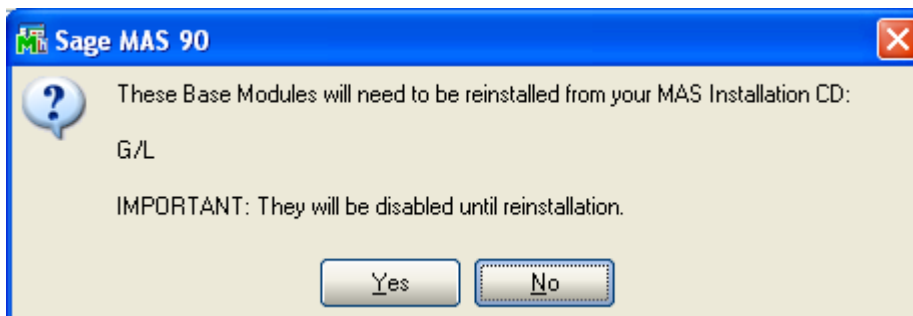


Select **No** to exit the Uninstall Process.

Select **Yes** to continue with the Uninstall Process.

After the Uninstall of the DSD Enhancement, you **MUST** reinstall certain standard Sage 100 modules, followed by reinstallation of Sage 100 Service Packs / Updates, if applicable.

The following message box will appear, and will display which of those specific Sage 100 modules you must reinstall afterwards.



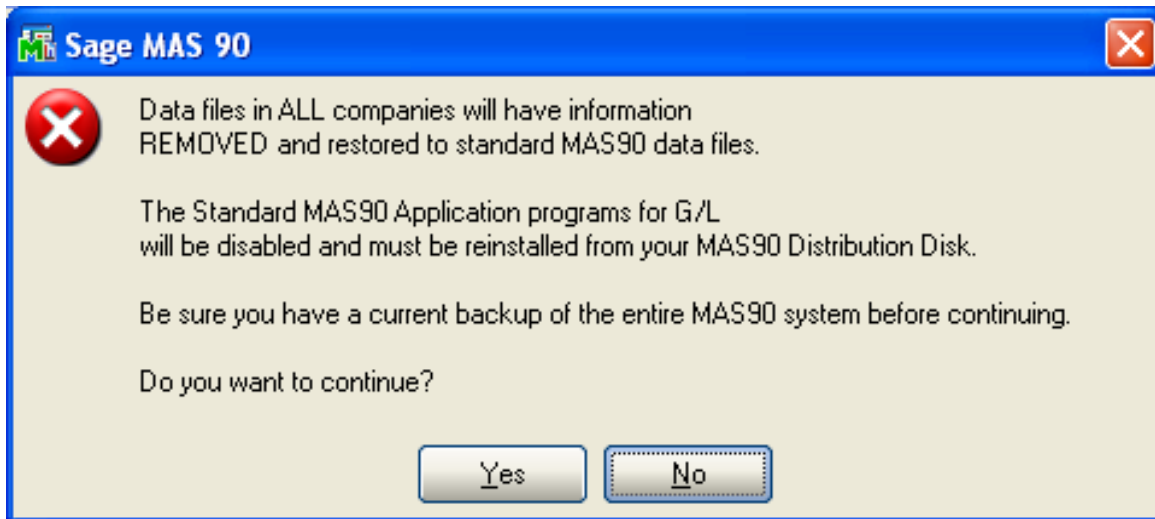
Select **No** to exit the Uninstall Process.

Select **Yes** to continue with the Uninstall Process.

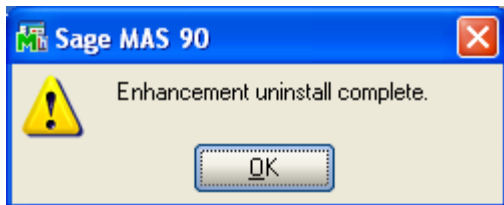
The following message box will appear, displaying the final warning message.

Select **No** to exit the Uninstall Process.

Select **Yes** to continue with the Uninstall Process. At this point, the DSD Enhancement will be removed from the Sage 100 system.



After completion of the Uninstall, the following message box will appear. Select OK to continue.



Now that the Uninstall process is completed, you must:

- Reinstall the applicable standard Sage 100 modules
- Reinstall the latest Sage 100 Service Pack/Updates, if applicable.
- Reinstall any other DSD Enhancements or Developer products that are affected from the reinstallation of the standard Sage 100 module(s).

License Agreement

IMPORTANT: THIS SOFTWARE IS LICENSED BY DSD BUSINESS SYSTEMS, INC. TO CUSTOMERS FOR THEIR USE ONLY IN ACCORDANCE WITH THE TERMS SET FORTH IN THIS CUSTOMER LICENSE AGREEMENT. OPENING OR USING THIS PACKAGE CONSTITUTES ACCEPTANCE OF THESE TERMS. IF THE TERMS OF THIS LICENSE ARE NOT ACCEPTABLE, THE CUSTOMER MAY OBTAIN A FULL REFUND OF ANY MONEY PAID IF THIS UNUSED, UNOPENED PACKAGE IS RETURNED WITHIN TEN (10) DAYS TO THE DEALER FROM WHICH IT WAS ACQUIRED.

1. **LICENSE. DSD BUSINESS SYSTEMS, INC.,** a California corporation as Licensor and owner hereby agrees to grant you as Licensee a non-exclusive license to use the enclosed software subject to the terms and restrictions set forth in this License Agreement. Title in and ownership of all programs and program enhancements or modifications written by DSD Business Systems, Inc. shall remain at all times vested in DSD Business Systems, Inc. The right granted by this Customer License Agreement and your payment of the non-refundable License fee is the right to use the Program in accordance with the terms of this Customer License Agreement. Delivery of a copy of the Program to you is made solely to enable you to exercise this right.
2. **COPYRIGHT.** This Program is copyrighted and all rights are reserved by DSD BUSINESS SYSTEMS, INC. and SAGE, INC. You may not copy or reproduce any part of the Program except to copy the Program for backup purposes. If you make a backup copy you must reproduce and include the copyright notice on it. The distribution of the product is intended for the use of the original Licensee only and for use only on the computer systems specified. Lawful users of this Program are hereby licensed only to read the Program from its medium into the memory of a computer only for the purpose of executing the program.

The documentation is also copyrighted and all rights are reserved. This document may not, in whole or in part, be copied, photocopied, reproduced, translated, transmitted or reduced to any electronic medium of machine readable form without prior consent, in writing, from DSD BUSINESS SYSTEMS, INC.

The Licensee recognizes that DSD BUSINESS SYSTEMS, INC. has expended considerable time, effort and money to develop the licensed Software and Manual and that DSD BUSINESS SYSTEMS, INC. will be substantially damaged by its unauthorized use, sale or distribution. In addition to recovery of all damages and the obtaining of injunctive relief as provided by law, in the event legal action must be taken to enforce this provision, the Licensee will pay DSD BUSINESS SYSTEMS, INC. all reasonable legal fees incurred in enforcing the rights of DSD BUSINESS SYSTEMS, INC. under this provision.

3. **RESTRICTIONS ON USE AND TRANSFER.** The original and any backup copies of the Program and its documentation are to be used only in connection with a single computer or network fileserver. You may physically transfer the Program from one computer to another, provided that the Program is used in connection with only one computer or network fileserver at a time. You may not distribute copies of the Program Documentation to others. The Program is to be used exclusively for business purposes and not for personal, family or household use. YOU MAY NOT USE, COPY, MODIFY, OR TRANSFER THE PROGRAM, IN WHOLE OR IN PART, EXCEPT AS EXPRESSLY PROVIDED FOR IN THIS LICENSE AGREEMENT. IN ADDITION YOU MAY NOT MODIFY, ADAPT, TRANSLATE, REVERSE ENGINEER, DECOMPILE, DISASSEMBLE THE PROGRAM, OR CREATE ANY DERIVATIVE WORK BASED UPON THE PROGRAM.
4. **WARRANTY.** DSD BUSINESS SYSTEMS, INC. software is licensed "as is" with no warranties of any kind, either expressed or implied, other than the following: DSD BUSINESS SYSTEMS will repair any bugs or flaws found in the software. Flaws of a critical nature which affect the basic functionality of the software will be repaired on an "emergency" basis, with a corrected distribution diskette sent via UPS Blue or equal. Flaws of a non-critical or cosmetic nature will be repaired on a timely basis, and a corrected distribution diskette sent via UPS ground or regular mail. All incidental or consequential damages that result from any defect in the software, even if DSD Business Systems, Inc. has been advised of the possibility of such damages will be assumed by you.

5. **LIMITED WARRANTY FOR DISKETTES.** To the original licensee only, DSD BUSINESS SYSTEMS, INC. warrants the magnetic diskette on which the Program is recorded to be free from defects in materials and faulty workmanship under normal use and service for a period of ninety days from the date the Program is delivered. Any implied warranties of merchantability and fitness for a particular purpose are limited in duration to the period of ninety (90) days from the date of delivery. If, during this 90 day period, a defect in the diskette should occur, the diskette may be returned DSD BUSINESS SYSTEMS, INC., 5120 Shoreham Place, Suite 280, San Diego, California, 92122, or to any authorized DSD BUSINESS SYSTEMS, INC. Dealer, and the diskette will be replaced without charge to you, provided that you have previously returned the Warranty Registration Card along with a copy of your sales receipt for the Program.
6. **NO OTHER WARRANTIES.** No dealer or distributor of DSD BUSINESS SYSTEMS, INC. products or any agent of DSD BUSINESS SYSTEMS, INC. is authorized to make any representation of warranty with respect to the Program except those expressly stated in the Customer License Agreement.
7. **LIMITATION OF LIABILITY.** Neither DSD BUSINESS SYSTEMS, INC. nor anyone else who has been involved in the creation, production or delivery of this program shall be liable for any direct, incidental or consequential damages.
8. **TERM.** This license is effective until terminated. You may terminate it at any time by returning the Program and Documentation together with all copies, modifications and merged portions in any form to DSD BUSINESS SYSTEMS, INC. The license will also be terminated by DSD BUSINESS SYSTEMS, INC. immediately and without notice if you fail to comply with any term or condition of this License Agreement.
9. **ACKNOWLEDGMENT.** Your opening this package, use of this program or signature on the warranty registration card acknowledges that you have read this customer license agreement and agree to its terms. You further agree that the license agreement is the complete and exclusive statement of the agreement between yourself and DSD BUSINESS SYSTEMS, INC. and supersedes any proposal or prior agreement, oral or written, and any other communications between yourself and DSD BUSINESS SYSTEMS, INC or dealers and distributors of DSD BUSINESS SYSTEMS, INC products relating to the subject matter of this agreement.
10. **ASSIGNMENT.** You may not sublicense this license or the Program. You may not rent this Program or the use of the Program. You may not transfer this copy of the Program unless the recipient agrees in writing (and a copy of such acceptance is sent to DSD BUSINESS SYSTEMS, INC., 5120 Shoreham Place, Suite 280, San Diego, California, 92122) to accept all of the terms of this Customer License Agreement. Any attempt by you to otherwise rent, sublicense, assign or transfer any of the rights, duties or obligation hereunder is void and may be the cause for immediate termination of the license. DSD BUSINESS SYSTEMS, INC. may assign any of its rights and obligation under this agreement to any party without notice to you.

Fax Transmittal Form

To:	DSD Business Systems Customer Service		Fax:	858/550-4900
From:	Name:		Phone:	
	Company:		Fax:	
Date:	/ /	# Pgs Including this Page:		
Subject:	Check One: <input type="checkbox"/> Product Problem <input type="checkbox"/> Suggestions			
Product:	APMU Accounts Payable Multi-Company		Version:	5.00

This page may be copied