



DSD
BUSINESS SYSTEMS

DSD Business Systems

MAS 90 Enhancements

POMC

Purchase Order Multi-Currency

Version 4.30

Sage Software
Development Partner
GOLD

Information in this document is subject to change without notice.

Copyright 1993-2008, DSD Business Systems All rights reserved.

Purchase Order Multi-Currency User's Manual
Version 4.30

23 December, 2008

DSD Business Systems
5120 Shoreham Place
Suite 280
San Diego, CA 92122
858/550-5900 8:00am to 5:00pm PST
858/550-4900 Fax

Trademarks

ProvideX[®] is a Trademark of Sage Software.

Windows is a trademark of Microsoft Corporation.

MAS 90[®] is a registered trademark of Sage Software.

PXPlus[®] is a registered trademark of PVX Plus technologies

All other product names and brand names are service marks, and/or trademarks or registered trademarks of their respective companies.

This documentation and the software described herein, is prepared and published under license. Sage Software has not tested or verified either the software or any representation in this documentation regarding the software. Sage Software does not make any warranty with respect to either this documentation or the software described herein, and specifically disclaims any warranty, express or implied, with respect hereto, including the warranties of fitness for a particular purpose and merchantability.

Table of Contents

SECTION A: INTRODUCTION	6
WEB RESOURCES	6
SUPPORT	6
HOW THE MULTI-CURRENCY P/O MODULE WORKS	7
MULTI-CURRENCY P/O FEATURES	7
REPORTS	8
SECTION B: GETTING STARTED	9
REQUIRED LEVELS	9
INSTALLATION	9
DSD ENHANCEMENT CONTROL PANEL	11
SECTION C: SETUP	13
CONVERSION NOTES	13
MULTI-CURRENCY PURCHASE ORDER PROCESSING SETUP	13
VENDOR PRICE LEVEL MAINTENANCE	14
PRICE LEVEL PRECEDENCE	15
SECTION D: SYSTEM OPERATIONS	16
AUTOMATIC REORDER SELECTION	16
AUTOMATIC REORDER REGISTER	17
AUTO GENERATE PURCHASE ORDERS SELECTION	17
AUTO GENERATE PURCHASE ORDERS REGISTER	17
PURCHASE ORDER ENTRY	18
PURCHASE ORDER LINES	19
PURCHASE ORDER PRINTING	19
RECEIPT OF GOODS/INVOICE ENTRY	20
RECEIPT OF INVOICE - TOTALS SCREEN	20
RECEIPT OF GOODS – LANDED COSTS	21
RECEIPT REGISTERS/UPDATE	21
P.O. RECEIPT/INVOICE VARIANCE REGISTER	21
RETURN OF GOODS ENTRY	22
RETURN ORDER PRINTING	22
RETURN ORDER REGISTER	23
RECEIPT HISTORY INQUIRY	24
PURCHASE ORDER INQUIRY	24
SECTION E: REPORTS	25

STANDARD REPORTS	25
SECTION F: CRYSTAL REPORTS	26
DATA DICTIONARIES	26
SECTION G: TROUBLESHOOTING	27
SECTION H: WHAT'S NEW?	29
VERSION 3.50	29
VERSION 3.51	30
VERSION 3.60	30
VERSION 3.61	30
VERSION 3.70 - 3.71	30
VERSION 4.00 - 4.30	30
SECTION I: UNINSTALL DSD ENHANCEMENTS	31
APPENDIX A: M*A*S 90/200 PROGRAM & FILE CHANGES	34
LICENSE AGREEMENT	35
FAX TRANSMITTAL FORM	37

Section A: Introduction

This manual contains a description and instructions for this DSD product. Operating instructions are included for the features added by this product to MAS 90. For instructions on using MAS 90, refer to the appropriate MAS 90 manual, or call your MAS 90 reseller. DSD Business Systems offers excellent MAS 90 support, at an hourly rate.

Web Resources

DSD web site: <http://www.dsdinc.com>

The Enhancement page contains:

- Current Release Schedule*
- Purchasing Information*
- Installation Instructions*
- Product Support*
- Enhancement Links*

POMC Purchase Order Multi-Currency: <http://www.dsdinc.com/enh/pages/POMC.htm>

The product web page contains:

- Product Description*
- Adobe Acrobat Product Description*
- Web Links*
- Current Product Version Table*
- Product Installation File Download*
- Product Manual in Word 97 and Adobe Acrobat Formats*
- Revision History*
- FAQ*

Support

DSD provides product support through MAS 90 resellers. Support is provided for the current version. Older versions are supported at an hourly rate. DSD's telephone number is **858-550-5900**. Fax: **858-550-4900**.

For a hard error, where the program displays an error dialog, report:

- Error number.*
- Program name.*
- Line number.*

Program version.

Exact sequence that caused the error, including menus and menu selections.

Other pertinent information.

If leaving a message or faxing, please include:

Your name.

Your phone number (and fax if applicable) and extension.

It is possible to be unable to duplicate a problem, because of data corruption or because we have not exactly duplicated a particular operating environment. In such circumstances, we can only continue to try to fix the problem if we can either access the system with Symantec PCAnywhere or by some other means access or duplicate the system.

How the Multi-Currency P/O Module Works

The **Multi-Currency Purchase Order Processing** enhancement provides the **MAS 90** user with the ability to enter Purchase Orders, Receipts of Goods/Invoice, and Returns in any currency using any exchange rate, and to print reports in any currency using any exchange rate. This enhancement is essential for any company making purchases from vendors in more than one country, since payment of that invoice is usually required in the vendor's currency.

Multi-Currency P/O Features

- **Vendor Price Levels by Vendor by Currency:** Set up Vendor Price Levels in any currency using the Foreign Cost setup in the Multi-Currency module on the Main menu.
- **Automatic Reorder and Auto Orders by Vendor's Currency:** Generate Automatic Reorder and Auto Order Purchase Orders only for Vendors with a specific Default Entry Currency.
- **Generate Automatic Purchase Orders in Vendor or Base Currency:** Specify if you want to generate the Purchase Orders in the Vendor's Default Entry Currency or in Base Currency.
- **Use Foreign or Base Costs and Breaks:** You may generate the Transaction Currency Purchase Orders using the Foreign Costs and Breaks set up for the Vendors and Items selected or you may select to convert the Base Costs and Breaks to the Purchase Order Transaction Currency.
- **Enter Transactions in Any Currency:** You may enter Purchase Orders, Receipt of Goods, Receipt of Invoice and Return of Goods in the Vendor's Default Entry Currency, or you may change the Transaction Currency to any other established Currency.
- **Enter Transactions using Any Exchange Rate:** You may use the currency Exchange Rate as of the transaction date or you may override the Exchange Rate.
- **Registers in Base and Transaction Currency:** For audit purposes, the Multi-Currency system prints Purchase Order Registers and Journals in both the Entry Currencies and the Base Currency using the appropriate Exchange Rates.

- **Receipt History Display in Base or Transaction Currency:** Receipt History amounts are displayed in Base Currency. They may also be displayed in Transaction Currency using the Currency Color specified in Currency Code Maintenance in General Ledger.
- **Print Reports in Any Currency:** Print any report in Base, Vendor, Entry or Other Currency, using As Posted or Current Amounts, in Buy, Sell, or an Override Rate.

Reports

The following reports are modified for the **Multi-Currency Purchase Order Processing** module:

- Ship To Address Code Listing
- P/O Vendor Price Level Listing
- M/C Automatic Reorder Register
- M/C Auto Generate Purchase Orders Register
- Purchase Order Printing
- M/C Receipt of Goods Register
- M/C Receipt of Invoice Register
- M/C Daily Purchases Journal
- Daily Transaction Register
- Return Order Printing
- M/C Return Order Register
- Material Requisition Register
- Open Purchase Order Report
- Open P.O. by Item Report
- Open P.O. by Job Report
- Expected Delivery Report
- Cash Requirements Report
- Purchase Order Recap
- Receipt History Report
- Purchase History Report
- General Ledger Posting Recap

Section B: Getting Started

CAUTION

- **If you reinstall or upgrade one of the MAS 90 modules listed in the following table, you must also reinstall this Enhancement.**
- Enhancements from different Master Developers are generally not designed to work together. If installed together, problems are likely to occur.
- **Check with DSD before installing more than one Enhancement.**
- **Do not install this Enhancement on MAS SQL Systems.**

Required Levels

MAS 90 Module	Module Required	Required Level
P/O	Y	4.30
APMC	Y	4.30
CUMC	Y	4.30
IMMC	N	4.30
BRMC	N	4.30
B/C (Bar Code)	N	4.30

Installation

The following instructions are for installing to Windows. For UNIX instructions see the "INSTALL.HTM" HTML file on the CD-ROM (you can use a Windows machine to view it.) It will guide you in mounting the CD-ROM on the UNIX file system and running a UNIX installation script.

1. **Back-up:** Exit all MAS 90 / MAS 200 sessions. Back-up existing MAS 90 / MAS 200 data.
2. **Check Levels:** MAS 90 / MAS 200 module levels **must match** those listed above.
3. **Run Enhancement Setup Program:** Save the executable installation program (sent to you or downloaded from our website) in a convenient location on the MAS90/200 server. Launch the program from Windows Explorer or by selecting Start/Run, then browse for the file in the location you saved it. Follow on-screen instructions.
4. **Re-Start MAS 90 / MAS 200:** MAS 90 / MAS 200 will be updated.
5. **Unlock the Enhancement:** DSD Enhancements must be unlocked to run. When any part of the Enhancement is run for the first time, the **DSD Enhancement License Agreement and Activation** window will appear. Follow the steps shown on that window. *You can click the Help button for more detailed instructions.*

Note: On the next page is a screenshot of the DSD Enhancement License Agreement and Activation window.

After accepting the License Agreement, you can then select the type of unlocking that you'd prefer. The choices are Normal, Demo and Web.

Normal Unlock: You will need to unlock the Enhancement by calling DSD during business hours (8am to 5pm PST) at **858-550-5900**.

Web Unlock: If the system that is running the DSD Enhancement *has web access* and you *have a DSD WebUnlock code*, you can unlock the Enhancement without assistance using WebUnlock. When this option is selected, the window will change to show the WebUnlock entry section. Enter the WebUnlock code and click the Unlock button.

- *Entering a WebUnlock code will unlock all DSD Enhancements that have been licensed.*
- *The MAS 90 / MAS 200 system that is being used must have web access for this option to be available.*
- *You can get a WebUnlock Code from your DSD Enhancements sales representative.*

Demo Unlock: If a Demo mode is available for the Enhancement you're running, you will be able to Demo unlock the product without assistance from DSD for demo purposes.

- *Creating a Demo Unlock is a good way to temporarily unlock DSD Enhancements off-hours, if you do not have web access and/or a WebUnlock code. Later, you can unlock the product fully, during business hours.*

Note: You can also unlock a DSD Enhancement through the **DSD Enhancement Control Panel** found on the Library Master Utilities Menu. Then, select the Enhancement with your mouse from the list of Enhancements and click the **Unlock Product** button on the right side of the window.

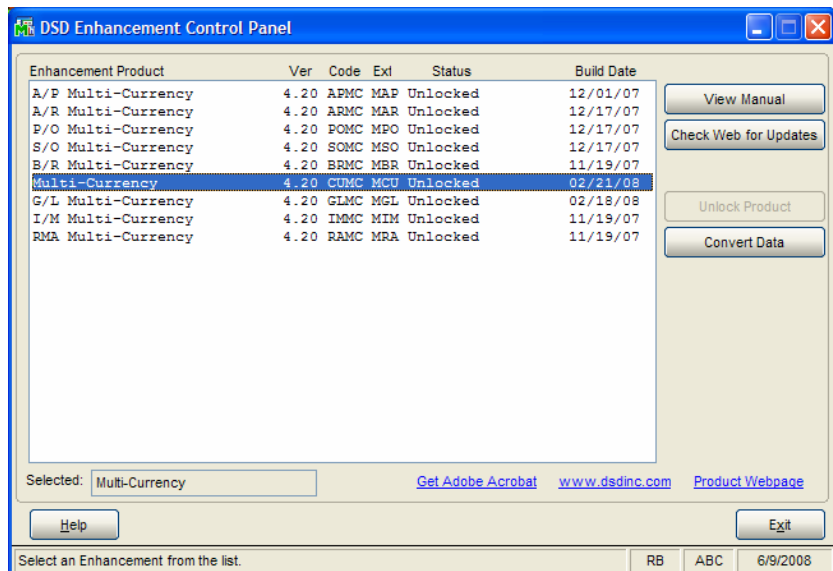
- Convert Data:** After registration, the Data Conversion window will appear. Follow on-screen instructions to complete data conversion. You can exit the conversion program without converting data. The Enhancement will not proceed, however, until data is converted. If you enter an enhanced program and data has not been converted, the conversion program will run again.

DSD Enhancement Control Panel

Starting with version 3.61, all DSD Enhancement products include DSD's Enhancement Control Panel. The **DSD Enhancement Control Panel is accessed from the Library Master Utilities menu.**

The DSD Enhancement Control Panel is a simple to use yet powerful system to help maintain DSD Enhancements installed on a MAS 90 / MAS 200 system. To use it, select an Enhancement product from the list on the window and then click the button, on the right side of the window, which corresponds with the desired task.

View Manual: This button will display the product manual for the selected Enhancement using Adobe Acrobat. For this to be possible, the PDF file for the corresponding manual must be in the "MAS90/PDF" folder in the MAS 90 system. If the file is not present, and the system has web access, the correct PDF file will be automatically downloaded from the DSD website, put into the "MAS90/PDF" folder and then displayed.



Check the Web for Updates: This button will check the DSD website to see what the current build is the selected Enhancement and alert the user if a later version is available. *This requires an ftp web connection on the MAS 90 / MAS 200 system.*

Unlock Product: This will cause the DSD Enhancement License Agreement and Activation window to appear. Using this window is described on the previous page. *This button is disabled if the selected Enhancement is already unlocked.*

Convert Data: After verification, the selected Enhancements data conversion program will run. Data conversion is non-destructive, and may be triggered any number of times. Sometimes this is required to fix data records imported or updated from a non-enhancement installation.

Help: The Help button, located at the bottom left of the window, opens an HTML help file .

Get Adobe Acrobat: Opens the Adobe Acrobat website to the page where Acrobat can be downloaded and installed.

There are also links to the DSD website and the Enhancement page on that site.

Section C: Setup

Conversion Notes

The system will designate the following values for each transaction converted from an existing **MAS 90** System:

1. Transaction Currency= Base Currency
2. Entry Date = Transaction Date
3. Entry Rate = 1
4. Entry Amount = Original Transaction Amount

IMPORTANT: Follow the Multi-Currency Startup process for each module installed before entering Multi-Currency transactions.

Multi-Currency Purchase Order Processing Setup

Data You Need

Before beginning the Multi-Currency Startup process, you should have the following information assembled and available for use:

- ◆ List of Foreign Ship to Addresses.
- ◆ List of Foreign Purchase Addresses.
- ◆ List of Foreign Price Levels.
- ◆ Repeating and Master Orders in their corresponding Entry Currencies.

A new **Currency Button** has been added to all Multi-Currency related screen prompts. Select this button to access the new Multi-Currency fields via a pop-up panel.

Most screens have been modified to display on the bottom of the screen the Currency of amounts being displayed or entered.

Vendor Price Level Maintenance

The Vendor Price Level Maintenance program has been modified to allow the set up of Vendor Price Levels by Currency. The Price Levels for Foreign Currencies use the Foreign Costs entered through the Foreign Price/Cost Maintenance option on the Multi-Currency module's Main Menu. The modified screen looks as follows:

Vendor Number: Enter a Vendor Number. Select the Lookup Button to list all vendors on file. Select the Search Button to list all transactions on file.

Currency Code: Enter a Currency Code. Select the Lookup Button to list all Currency Codes on file. This field will default to the Base Currency Code. This field will be disabled if the I/M Multi-Currency enhancement is not installed.

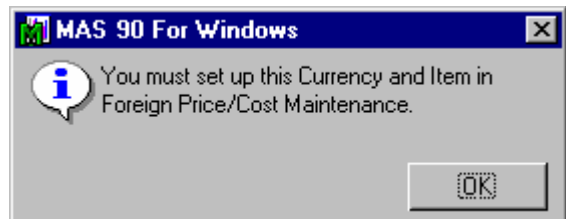
Product Line: Enter a Product Line. Select the Lookup Button to list all Product Lines on file.

Item Number: Enter an Item Number. Select the Lookup Button to list all Item Numbers on file.

Step	From Qty	To Qty	Discount Amount
1	1	100	10.000
2	101	999999	20.000
3			.000
4			.000
5			.000
6			.000
7			.000
8			.000

Once an Item is selected, the Foreign Cost for the selected Currency and Item will be displayed next to the Pricing Method. The calculation of Price Levels will be based on the Foreign Cost displayed. Any amount entered in this screen will be considered to be in the selected Currency.

The system will display the following message if a Foreign Cost for the selected Currency and Item has not been set up in the Foreign Price/Cost Maintenance program on the Multi-Currency module's Main menu.



NOTE: Please refer to the Multi-Currency Inventory Management manual for a detailed description of the Foreign Price/Cost Maintenance program.

Price Level Precedence

The system will consider the following order to determine the correct Item cost:

1. Price Level for Vendor + Transaction Currency + Item
2. Price Level for Vendor + Transaction Currency + Product Line
3. Price Level for Vendor + Transaction Currency
4. Price Level for Vendor + Base Currency + Item
5. Price Level for Vendor + Base Currency + Product Line
6. Price Level for Vendor + Base Currency

For cases 2 and 3 above, the Price Levels for the specified currency will only take effect for the items for which you have set up a Foreign Cost in the Foreign Price/Cost Maintenance program on the Multi-Currency module's Main menu.

Any Price Levels set up in Base Currency will be used for any non-defined Foreign Price Level. In such a case, the system will calculate the Foreign Price Level by converting the Base cost using the Purchase Order's Exchange Rate.

Section D: System Operations

Automatic Reorder Selection

The Automatic Reorder Selection program has been modified to include a new **Currency Button**. Select this button to access the **Multi-Currency Settings** screen:

Purchase Order Currency: Select **Vendor Default Currency** to generate Purchase Orders in the Vendor's Default Entry Currency. Select **Base Currency** to generate the Orders in Base Currency. This field will default to **Vendor Default Currency**.

Purchase Order Date: Enter a Purchase Order date. This date will be used to find the Exchange Rate for the Purchase Order Currency. This field will be displayed only if you selected **Vendor Default Currency** as the **Purchase Order Currency**.

Use Foreign Costs: Select this check box to use the Foreign Costs setup in the Foreign Price/Cost Maintenance program on the Multi-Currency module's Main menu. Clear this check box to convert the Base costs to the Transaction Currency using the Purchase Order Exchange Rate. This field will be displayed only if you selected **Vendor Default Currency** as the **Purchase Order Currency**.

Use Foreign Breaks: Select this check box to use the Foreign Price Levels. . Clear this check box to use only the Base Currency Price Levels. This field will be displayed only if you selected the **Use Foreign Costs** check box.

Vendor Default Currency: Select the **All** check box to select Items supplied by Vendors with all Default Entry Currencies, or enter a range of Currencies for a specific group of Vendor Default Entry Currencies. Select the **Lookup Button** to list all Currencies on file.

Automatic Reorder Register

The Automatic Reorder Register may be printed in both Base Currency and Transaction Currency.

Auto Generate Purchase Orders Selection

The Auto Generate Purchase Orders Selection program has been modified to include a new **Currency Button**. Select this button to access the **Multi-Currency Settings** screen:

Purchase Order Currency: Select **Vendor Default Currency** to generate Purchase Orders in the Vendor's Default Entry Currency. Select **Base Currency** to generate the Orders in Base Currency. This field will default to **Vendor Default Currency**.

Purchase Order Date: Enter a Purchase Order date. This date will be used to find the Exchange Rate for the Purchase Order Currency. This field will be displayed only if you selected **Vendor Default Currency** as the **Purchase Order Currency**.

Use Foreign Costs: Select this check box to use the Foreign Costs setup in the Foreign Price/Cost Maintenance program on the Multi-Currency module's Main menu. Clear this check box to convert the Base costs to the Transaction Currency using the Purchase Order Exchange Rate. This field will be displayed only if you selected **Vendor Default Currency** as the **Purchase Order Currency**.

Use Foreign Breaks: Select this check box to use the Foreign Price Levels. . Clear this check box to use only the Base Currency Price Levels. This field will be displayed only if you selected the **Use Foreign Costs** check box.

Vendor Default Currency: Select the **All** check box to select all Vendor Default Entry Currencies, or enter a range of Currencies for a specific group of Vendor Default Entry Currencies. Select the Lookup Button to list all Currencies on file.

Auto Generate Purchase Orders Register

The Auto Generate Purchase Orders Register may be printed in both Base Currency and Transaction Currency.

Purchase Order Entry

The Purchase Order Entry program has been modified to allow the entry of Purchase Orders in Foreign Currencies using the appropriate Exchange Rate. The Vendor and Ship to Countries may be maintained.

The Purchase Order Entry Header Panel has been modified to include a new **Currency Button**. Select this button to access the **Multi-Currency Settings** screen:

Transaction Currency: Enter the Transaction Currency Code for the order. Select the Lookup Button to list all Currency Codes on file. The system will ask you for the Supervisor Password if one was set up in General Ledger.

If amounts have already been entered, and the currency is changed, then the order amounts remain the same and will be considered to be in the new currency.

The screenshot shows a dialog box titled "Multi-Currency Settings - Purchase Order Entry". It contains the following fields and values:

Transaction Currency	PE\$O	Lookup	Peso
Exchange Rate	1.12345678		
Vendor Country	Mexico		
Ship-To Country	Mexico		

Buttons: Accept, Cancel

This field will not be accessible if the **Allow Currency Change** flag is not checked for the Vendor in Vendor Maintenance.

Exchange Rate: Enter the Exchange Rate for the order. The rate will default to the exchange rate found in Currency Code Maintenance for the Order Date. If the default exchange rate is overridden, then the order amounts remain the same and will be converted to Base Currency when posting to General Ledger using the new Exchange Rate.

The system will ask you for the Supervisor Password if one was set up in General Ledger. This field will not be accessible if the **Allow Rate Change** flag is not checked for the Vendor in Vendor Maintenance.

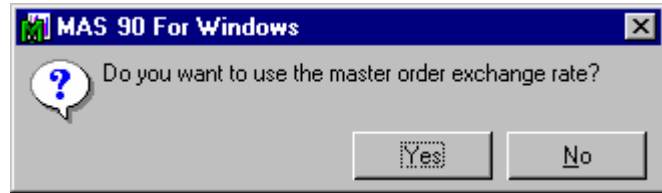
Vendor Country: This field is no longer used in version 3.50 and above.

Ship-To Country: This field is no longer used in version 3.50 and above. When a new Drop ship, Master, Repeating, or Standard Purchase Order is entered, then the Vendor's Default Entry Currency on the bottom of the screen. This is the currency for all amounts entered in the selected Purchase Order.

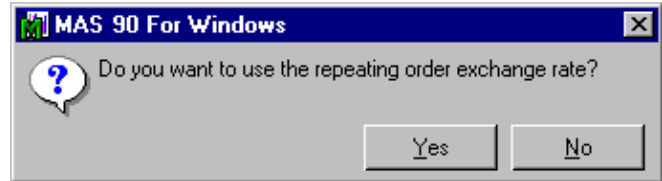
Drop ship Purchase Orders will be entered in Base Currency if the Multi-Currency Sales Order module is not installed.

Material Requisitions will be entered in Base Currency only.

When a Standard Purchase Order makes reference to a Master Order, the system will display the following message. Select **Yes** to use the original order Exchange Rate. Select **No** to use the Exchange Rate as of the new Purchase Order date.



When a Standard Purchase Order makes reference to a Repeating Order, the system will display the following message. Select **Yes** to use the original order Exchange Rate. Select **No** to use the Exchange Rate as of the new Purchase Order date.



Amounts posted to the Job Cost module will be converted to Base Currency.

Purchase Order Lines

The Purchase Order program has been additionally modified to calculate and display the Item Costs in the Purchase Order Transaction Currency.

The Vendor Price Lookup has also been modified to display Foreign Price Breaks, if any are set up in Price Level Maintenance.

NOTE: Please refer to the Price Levels Precedence section for a detailed explanation of Item Cost calculation.

Purchase Order Printing

The Purchase Order Printing and Quick Print program has been modified to print in Transaction Currency.

The following fields have been added to the Purchase Order Printing Form. Please see **Section E: Crystal Forms** if you are using Graphical forms printing.

#CURRENCY CODE
#CURRENCY PLURAL
#CURRENCY SYMBOL
#EXCHANGE RATE
#INVERSE EXCHANGE RATE

Receipt of Goods/Invoice Entry

The Receipt of Goods Entry program has been modified to receive Items in the Currency ordered using the Exchange Rate as of the Receipt Date. The Vendor and Ship to Countries may be maintained. The Receipt of Goods/Invoice Entry Header Panel has been modified to include a new **Currency Button**. Select this button to access the **Multi-Currency Settings** screen:

Transaction Currency: Enter the Transaction Currency Code for the receipt. Select the Lookup Button to list all Currency Codes on file. The system will ask you for the Supervisor Password if one was set up in General Ledger.

If amounts have already been entered, and the currency is changed, then the order amounts remain the same and will be considered to be in the new currency.

This field will not be accessible if the **Allow Currency Change** flag is not checked for the Vendor in Vendor Maintenance or if you applied a Purchase Order to the Receipt.

Exchange Rate: Enter the Exchange Rate for the receipt. The rate will default to the exchange rate found in Currency Code Maintenance for the Receipt Date. If the default exchange rate is overridden, then the receipt amounts remain the same and will be converted to Base Currency when posting to General Ledger using the new Exchange Rate.

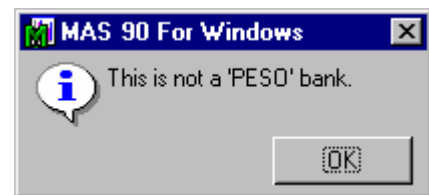
The system will ask you for the Supervisor Password if one was set up in General Ledger. This field will not be accessible if the **Allow Rate Change** flag is not checked for the Vendor in Vendor Maintenance.

Vendor Country: This field is no longer user in version 3.50 and above.

Ship-To Country: This field is no longer user in version 3.50 and above.

Receipt Of Invoice - Totals Screen

Bank Code: When a C.O.D. Check is entered, the System will verify that the Bank's Currency for the Bank Code entered matches the Receipt of Invoice Currency. If the Currencies do not agree, the following message will be displayed:



When the Receipt of Invoice is updated the C.O.D. Check will post to the Accounts Payable and Bank Reconciliation modules in the Bank's Currency.

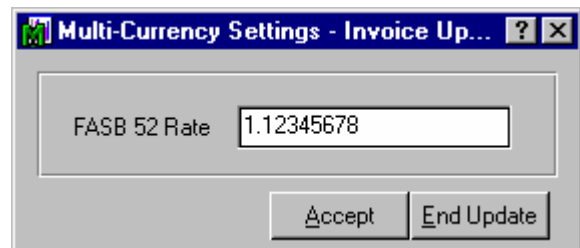
Receipt of Goods – Landed Costs

Although all costs in Receipt of Goods Entry are in the Entry Currency, you have the option of entering Landed Costs in either Base Currency OR Entry Currency. In the G/L Setup Options – Multi-Currency Panel, there is a checkbox called “**Currency for Landed Costs in PO.**” Select **Base Currency** to force entry of Landed Costs in Base Currency Only or **Entry Currency** to force entry of Landed Costs in the Receipt Currency Only.

Receipt Registers/Update

The Receipt of Goods Register, Receipt of Invoice Register and Daily Purchases Journal print in both Base Currency and Transaction Currency.

If **FASB 52** Currency is tracked (see the GLMC manual for a description of this), then the user has the option of overriding the FASB 52 Rate used in the update. Once the Registers have been printed, the user will be prompted as shown.



FASB 52 Rate: Enter the FASB 52 exchange rate used in the posting of the invoices. Select **End Update** to cancel the update.

The Daily Receipt Update has been modified to perform all the appropriate currency conversions. The Gain/Loss will be calculated and will post to the General Ledger Account defined in Division Maintenance. This amount is caused by the difference between the Currency Conversion Rate at the time that the Invoice was posted, and the Rate at the time that the Check is printed. The Gain or Loss Amount will always be zero for Invoices paid in either the Base Currency, or in a currency other than the Transaction Currency.

P.O. Receipt/Invoice Variance Register

Whenever an Item Amount Received and Amount Invoiced in Base Currency are not the same for a completed Purchase Order, the system will generate a P.O. Receipt/Invoice Variance Register. This Register identifies and posts the difference between these two amounts to the appropriate General Ledger Accounts to correct the variance.

Because the Exchange Rates for a Purchase Order, Receipt of Goods and Receipt of Invoice may not be the same, the Base Currency amounts may vary, even though the Transaction Currency amounts remain the same.

For the same reason, the Base Currency amounts may be the same between a Purchase Order, Receipt of Goods and Receipt of Invoice even when the Transaction Currency amounts are not.

Return of Goods Entry

The Return of Goods program has been modified to Return Goods in the Currency received using the Exchange Rate as of the Return of Goods Date. The Vendor and Ship to Countries may be maintained. The Return of Goods Entry Header Panel has been modified to include a new **Currency Button**. Select this button to access the **Multi-Currency Settings** screen:

Transaction Currency: Enter the Transaction Currency Code for the receipt. Select the Lookup Button to list all Currency Codes on file. The system will ask you for the Supervisor Password if one was set up in General Ledger.

If amounts have already been entered, and the currency is changed, then the order amounts remain the same and will be considered to be in the new currency.

This field will not be accessible if the **Allow Currency Change** flag is not checked for the Vendor in Vendor Maintenance or if you applied a Purchase Order to the Return.

Exchange Rate: Enter the Exchange Rate for the return. The rate will default to the exchange rate found in Currency Code Maintenance for the Return Date. If the default exchange rate is overridden, then the return amounts remain the same and will be converted to Base Currency when posting to General Ledger using the new Exchange Rate.

The system will ask you for the Supervisor Password if one was set up in General Ledger. This field will not be accessible if the **Allow Rate Change** flag is not checked for the Vendor in Vendor Maintenance.

Vendor Country: This field is no longer user in version 3.50 and above.

Ship-To Country: This field is no longer user in version 3.50 and above.

Return Order Printing

The Return Order Printing program has been modified to print in Transaction Currency.

The following fields have been added to the Return Order Printing Form. Please see **Section E – Crystal Forms** if you are using Graphical forms printing.

#CURRENCY CODE
 #CURRENCY PLURAL
 #CURRENCY SYMBOL

#EXCHANGE RATE
#INVERSE EXCHANGE RATE

Return Order Register

The Return Order Register print in both Base Currency and Transaction Currency.

Receipt History Inquiry

The Receipt History Inquiry programs have been modified to allow display of information in both **Base Currency** and **Transaction Currency**. The Lines and Totals Panel has been modified to include an **Amounts In Drop Box** to toggle display of these amounts. The Header Panel has also been modified to include a **Currency Button**. Select this button to access the **Currency Code** and **Exchange Rate** of the transaction.

The Currency of the Transaction is displayed at the bottom of the Receipt History Inquiry Panel.

Purchase Order Inquiry

The Purchase Order Inquiry programs have been modified to allow display of information in both **Base Currency** and **Transaction Currency**. The Lines and Totals Panel has been modified to include an **Amounts In Drop Box** to toggle display of these amounts.

The Header Panel has also been modified to include a **Currency Button**. Select this button to access the **Currency Code** and **Exchange Rate** of the transaction.

The Currency of the Transaction is displayed at the bottom of the Purchase Order Inquiry Panel.

Section E: Reports

Standard Reports

When printing any Purchase Order Reports, you may define the Currency and Exchange Rate to use. A new **Currency Button** has been added to the Report Panel, and when selected, the following screen will be displayed (This screen will vary slightly depending on the report being printed and the options entered):

Currency Range: Enter a range of Currencies for a specific group of transactions. Select the **Lookup** Button to list all Currencies on file. This field will be displayed only for reports that print amounts from individual transactions.

Printing Currency: Select **Entry** for Transaction Currency, **Base** for Base Currency, **Vendor** for Vendor Currency, **Other** for Other Currency, or **Rate Override** for Override Rate.

Currency Code: Enter the Currency Code in which to print all amounts. This field will be displayed only if you selected **Other** as the **Printing Currency** option.

Printing Amounts: Select **As Posted** to import all amounts As Posted or **Override Date** to convert amounts using an Exchange Rate as of an Override Date. This field will be displayed only if you selected **Other** as the **Printing Currency**.

Override Date: Enter a date using the MMDDYY format to import amounts converted to the Printing Currency using the Exchange Rate as of this date. This field will be displayed only if you selected **Override Date** as the **Printing Amounts**.

Rate Type: Select **Buy Rate** or **Sell Rate**. This field will be displayed only if you selected **Override Date** as the **Printing Amounts**.

Override Rate: Enter a Rate to be used when exporting amounts. This field will be displayed only if you selected **Rate Override** as the **Printing Currency**.

Section F: Crystal Reports

Data Dictionaries

The following Crystal Data Dictionaries have been modified in Crystal Reports to contain the **Currency Code** and **Exchange Rate**.

***NOTE:** DSD Business Systems is not responsible for any problems with use of Crystal Reports. DSD is only responsible for providing the Data Dictionaries to report from.*

- PO1_PurchaseOrderEntryHeader
- PO5_ReceiptEntryHeader
- PO8_AutoReorderSelection
- POE_ReturnEntryHeader
- POM_RecptHistoryLine
- POP_RecptHistoryHeader
- POR_VendorPriceLevel
- PO_01AutoGeneratePurchaseOrders
- PO_25CRWPurchaseOrderHeader
- PO_26CRWReturnOfGoodsHeader

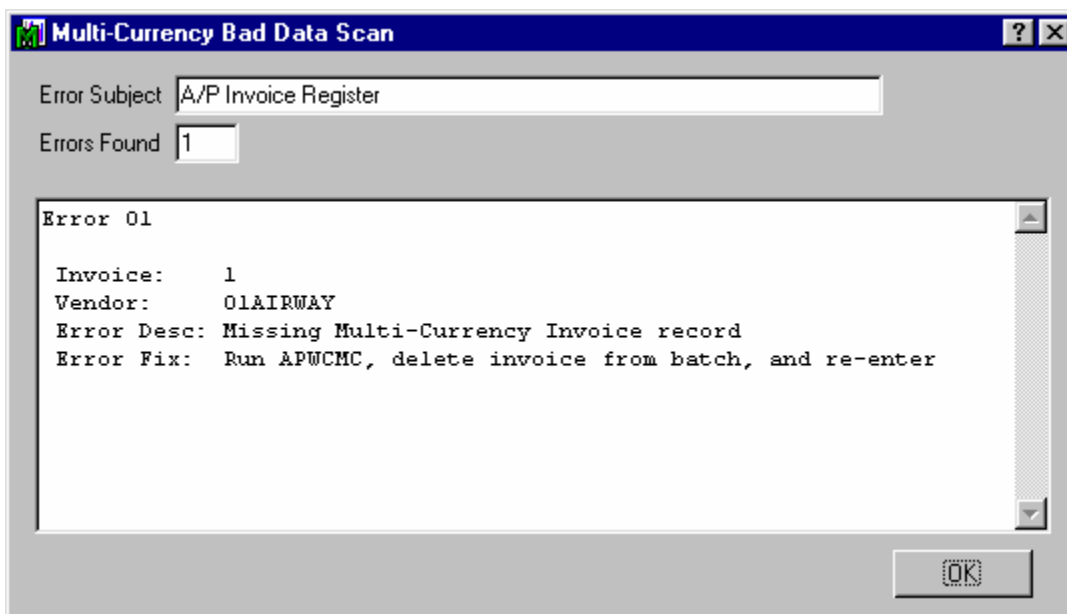
Order and Return Printing using Crystal Reports

The Order and Return Printing programs have been modified to print in **Transaction Currency**.

Section G: Troubleshooting

Each of the Data Entry Registers has been enhanced to perform a “Bad Data Scan” prior to register printing. This scan will check the data entry files and associated master files and determine if there are any problems. The purpose of this feature is to eliminate errors that can occur during the data entry registers or updates that are caused by corrupt or missing data.

The following is a sample of a Bad Data Scan Screen that may pop-up when a register is run. In this example, the A/P Invoice Register was run and it found that a currency record was missing:



The Bad Data Scan panel displays the record information, the error description, and the solution to fixing the error. If Batch Processing is used, the Batch Number will also be displayed. If there are multiple errors found in the same batch, then all of the errors will be displayed on the panel and you can then scroll up/down to review all errors.

When the **OK** button is pressed, the panel will close and you will be back at the MAS90 menu. The register will **not** print.

If no errors are found, then the Bad Data Scan panel will **not** be displayed, and the register will print as normal.

In Purchase Order, the following errors are possible due to missing or corrupt data. Also presented are the solutions to fixing the errors:

- Error:** Missing Multi-Currency Receipt/Return record
Solution: Run POWCMC, deleted the Receipt/Return from the batch, and re-enter
- Error:** Exchange Rate is set to Zero
Solution: Delete Receipt/Return from batch –OR- reset the exchange rate in data entry
- Error:** Invalid or missing Currency Code on Receipt/Return Record
Solution: Check Currency Code on Receipt/Return record
- Error:** Missing MC Vendor record
Solution: Run APWCMC
- Error:** Invalid or missing Currency Code on Vendor record
Solution: Check Currency Panel in Vendor Maintenance
- Error:** Missing MC Line record
Solution: Deleted Receipt/Return from the batch, and re-enter

If the solution is to **Run POWCMC**, then select "**File / Run**" from the MAS90 Launcher menu and enter "**POWCMC**" for the Program Name. Click **OK** to proceed. This will trigger the DSD Multi-Currency Conversion Wizard for that Multi-Currency module. Click the **Next** button to start the conversion.

You might ask: "Why would data be corrupt?" There are 2 types of problems that can occur with data entry:

Bad Data: Sometimes a user will be entering information into data entry, and for whatever reason, the system hangs or reboots, thus causing incomplete or corrupt data to be saved. This problem occurs more frequently with users on a WAN. If the user doesn't delete the data entry in progress and re-do it, then the register or update will usually cause errors.

Missing Customer/Vendor Data: If a Vendor/Customer record has missing Currency Codes, then the update programs will cause errors.

If you are experiencing recurring data problems with the Multi-Currency modules, please contact DSD Business Systems immediately for consultation.

Section H: What's New?

Version 3.50

There have been some significant changes in this version of P/O Multi-Currency:

1. A new “**Post to G/L in Entry**” flag has been added to **Division Maintenance** in Accounts Payable. Please refer to **Section G** of the **A/P Multi-Currency manual** for a detailed explanation of this new feature.
2. The A/P and P/O Multi-Currency file structures has been revamped. Please refer to the **Version 3.50 – Technical** subsection of **Section G** of the **A/P Multi-Currency manual** for a detailed explanation.
3. The Currency Code has been added to the **ALE Lookups** for Vendor and transaction lookups.
4. All P/O reports default to print in **Entry Currency, As Posted** instead of **Base Currency**.
5. The **Journals** now print in a different order: Entry Currency first, Base Currency next. The user will no longer be prompted to print in Entry Currency.
6. The **CRW data dictionaries** and Standard Data Dictionaries have completely changed for the new file format. Please refer to **Section E** for a review of the new format. If you have any reports that use the old Multi-Currency “piggyback” files, you will have to change those reports.
7. The **Entry Currency** template used in Purchase Order Printing and Return Order Printing is no longer used.

Important: *If you have any Order or Return Crystal forms that use the old Entry Currency template, you must set up a new form using any of the other templates and use that form instead.*

Please contact DSD Business Systems if you have any problems concerning this.

Version 3.51

There have been 2 changes in the 3.51 versions of Multi-Currency:

1. A new dropbox has been added to the G/L Multi-Currency Options panel called “**Default Currency for Reports.**” You may now select subsidiary (non-G/L) reports to default to **Base Currency** or **Entry Currency**.
2. A new checkbox has been added to the G/L Multi-Currency Options panel called “**Print Report Totals when printing in Entry Currency.**” Select this checkbox if you want to print report totals when printing in Entry Currency. Please note that if you print in Entry Currency and there are multiple currencies being reported, that the totals will be useless.

Note: The G/L Multi-Currency Options panel is accessible from G/L Options Main Panel by selecting the **Currency Button**.

Version 3.60

A new dropbox has been added to the G/L Multi-Currency Options panel called “**Currency for Landed Costs in PO.**” You may now choose to do Landed Cost Entry in either **Base Currency** or **Entry Currency** in Receipt of Goods Entry.

Version 3.61

The PO_25CRWPurchaseOrderHeader and PO_26CRWReturnOfGoodsHeader dictionaries have been modified to include the Currency Code field of the order / return for use in Order Printing and Return Printing in Crystal.

In this revision, POMC has been enhanced for MAS200 SQL.

Version 3.70 – 3.71

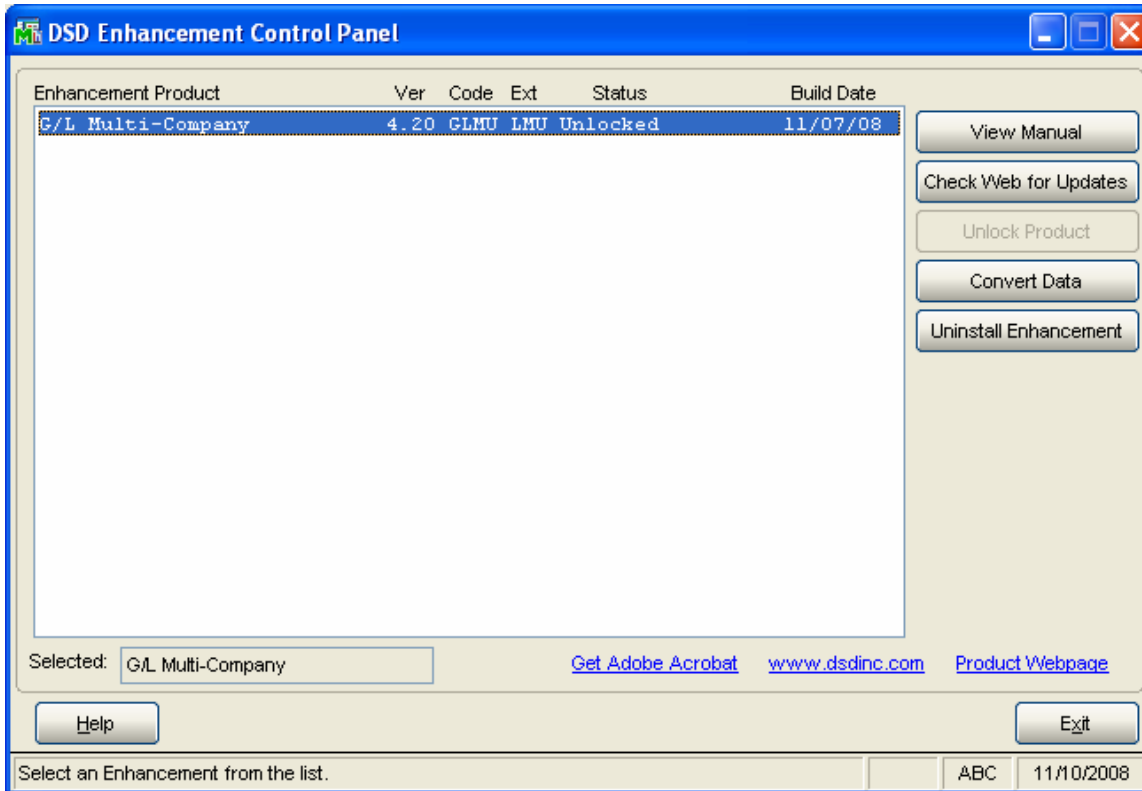
No new features have been added to these releases. A new section has been added to the User Manual: **Appendix A**.

Version 4.00 – 4.30

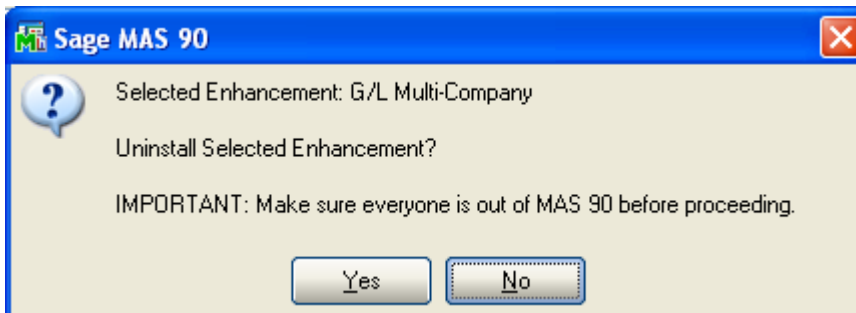
No new features have been added to these releases.

Section I: Uninstall DSD Enhancements

A DSD Enhancements Uninstall Utility has been provided for the purposes of removing DSD Enhancements from your MAS 90/200 System. This utility may be accessed from the **DSD Enhancement Control Panel** menu option on the **Library Master / Utilities** menu.

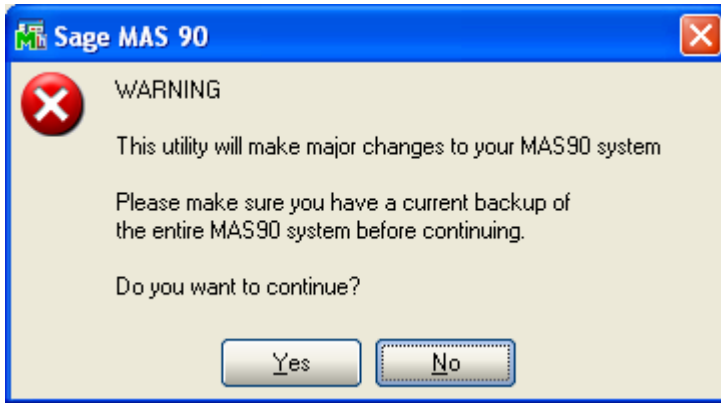


When accessing the **DSD Utility Suite**, select the enhancement that you wish to Uninstall, and then select the **Uninstall Enhancement** button. The following message box will appear:



Select **No** to exit the Uninstall Process.
 Select **Yes** to continue with the Uninstall Process.

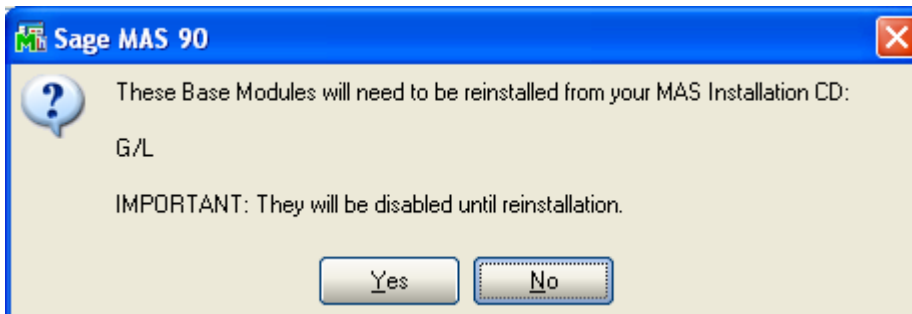
The following message box will appear, to remind you that a complete backup of your entire MAS90 system should be completed prior to uninstalling a DSD product.



Select **No** to exit the Uninstall Process.
Select **Yes** to continue with the Uninstall Process.

After the Uninstall of the DSD Enhancement, you MUST reinstall certain standard MAS 90/200 modules, followed by reinstallation of MAS Service Packs / Updates, if applicable.

The following message box will appear, and will display which of those specific MAS 90/200 modules you must reinstall afterwards.

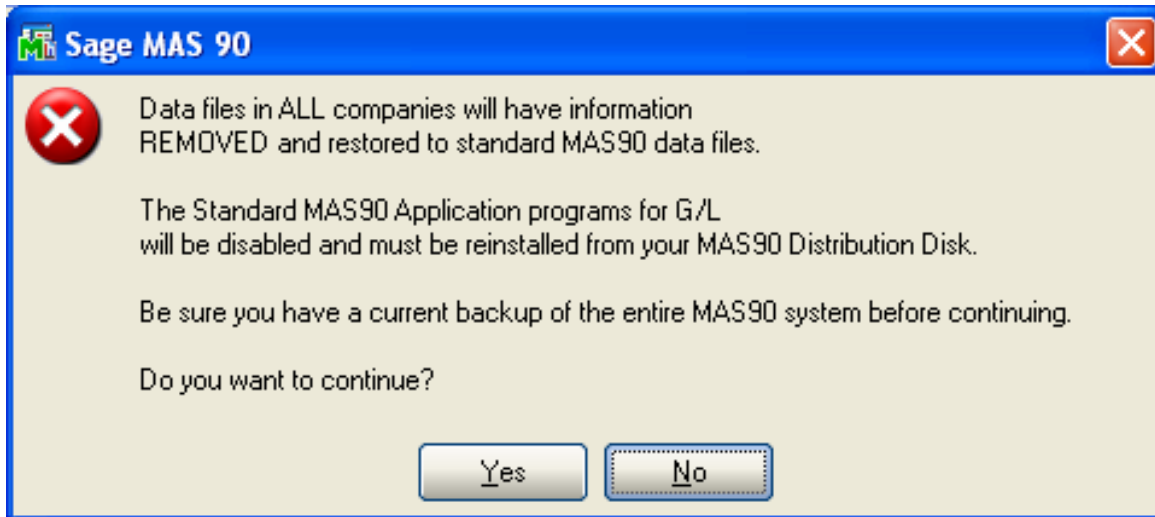


Select **No** to exit the Uninstall Process.
Select **Yes** to continue with the Uninstall Process.

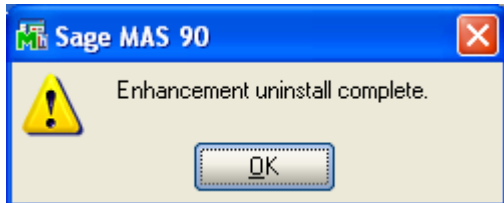
The following message box will appear, displaying the final warning message.

Select **No** to exit the Uninstall Process.

Select **Yes** to continue with the Uninstall Process. At this point, the DSD Enhancement will be removed from the MAS 90/200 system.



After completion of the Uninstall, the following message box will appear. Select OK to continue.



Now that the Uninstall process is completed, you must:

- Reinstall the applicable standard MAS 90/200 modules
- Reinstall the latest MAS 90/200 Service Pack/Updates, if applicable.
- Reinstall any other DSD Enhancements or Developer products that are affected from the reinstallation of the standard MAS 90/200 module(s).

Appendix A: M*A*S 90/200 Program & File Changes

The following M*A*S 90/200 Programs are modified or added by P/O Multi-Currency:

POWCAA	POWDMA	POWJGA	POWRHB	POWSDA.LIB
POWCMC	POWDMA.LIB	POWLL1	POWRJA	POWUBA
POWDAA	POWFAA	POWMBA	POWRJA.LIB	POWUBB
POWDAA.LIB	POWFAB	POWPAA	POWRIB	POWUBC
POWDAB	POWFBA	POWQAA	POWRJA	POWUBD
POWDAD	POWFBB	POWQBA	POWRJA.LIB	POWUBE
POWDAE	POWIAA	POWRAA	POWRJB	POWUDA
POWDAH	POWIAA.LIB	POWRAB	POWRJC	POWUDB
POWDAI	POWIAB	POWRBA	POWRKA	POWUDC
POWDBA	POWIAC	POWRBB	POWRLA	POWUDD
POWDBA.LIB	POWIPA	POWRCA	POWRLA.LIB	POWUDE
POWDBB	POWIPA.LIB	POWRCA.LIB	POWRLB	POWUFB
POWDBE	POWIPB	POWRCC	POWRMA	POWUGA
POWDBH	POWIPD	POWRDA	POWRNA	POWUKA
POWDBJ	POWIPJ	POWRDA.LIB	POWRNB	POWUMA
POWDBP	POWJBA	POWRDB	POWRNC	POZCAA.MPO
POWDCA	POWJBB	POWREA	POWRND	POZCUC
POWDCA.LIB	POWJBC	POWREA.LIB	POWRNE	POZFX1
POWDDA	POWJBE	POWREB	POWRNF	POZREM
POWDDA.LIB	POWJBF	POWRFA	POWROA	
POWDDB	POWJDA	POWRFB	POWROA.LIB	BCWTBA
POWDDE	POWJDB	POWRGA	POWROB	BCWTBB
POWDDH	POWJDC	POWRGA.LIB	POWSAA	
POWDKA	POWJDE	POWRGB	POWSAA.LIB	
POWDKA.LIB	POWJDF	POWRHA	POWSAC	
POWDKB	POWJFA	POWRHA.LIB	POWSDA	

The following M*A*S 90/200 Data Files are modified or added by P/O Multi-Currency:

P00	P08	POP	PO_26
P01	POE	PO_01	PO_MR
P05	POM	PO_25	

License Agreement

IMPORTANT: THIS SOFTWARE IS LICENSED BY DSD BUSINESS SYSTEMS, INC. TO CUSTOMERS FOR THEIR USE ONLY IN ACCORDANCE WITH THE TERMS SET FORTH IN THIS CUSTOMER LICENSE AGREEMENT. OPENING OR USING THIS PACKAGE CONSTITUTES ACCEPTANCE OF THESE TERMS. IF THE TERMS OF THIS LICENSE ARE NOT ACCEPTABLE, THE CUSTOMER MAY OBTAIN A FULL REFUND OF ANY MONEY PAID IF THIS UNUSED, UNOPENED PACKAGE IS RETURNED WITHIN TEN (10) DAYS TO THE DEALER FROM WHICH IT WAS ACQUIRED.

1. **LICENSE. DSD BUSINESS SYSTEMS, INC.,** a California corporation as Licensor and owner hereby agrees to grant you as Licensee a non-exclusive license to use the enclosed software subject to the terms and restrictions set forth in this License Agreement. Title in and ownership of all programs and program enhancements or modifications written by DSD Business Systems, Inc. shall remain at all times vested in DSD Business Systems, Inc. The right granted by this Customer License Agreement and your payment of the non-refundable License fee is the right to use the Program in accordance with the terms of this Customer License Agreement. Delivery of a copy of the Program to you is made solely to enable you to exercise this right.
2. **COPYRIGHT.** This Program is copyrighted and all rights are reserved by DSD BUSINESS SYSTEMS, INC. and SAGE, INC. You may not copy or reproduce any part of the Program except to copy the Program for backup purposes. If you make a backup copy you must reproduce and include the copyright notice on it. The distribution of the product is intended for the use of the original Licensee only and for use only on the computer systems specified. Lawful users of this Program are hereby licensed only to read the Program from its medium into the memory of a computer only for the purpose of executing the program.

The documentation is also copyrighted and all rights are reserved. This document may not, in whole or in part, be copied, photocopied, reproduced, translated, transmitted or reduced to any electronic medium of machine readable form without prior consent, in writing, from DSD BUSINESS SYSTEMS, INC.

The Licensee recognizes that DSD BUSINESS SYSTEMS, INC. has expended considerable time, effort and money to develop the licensed Software and Manual and that DSD BUSINESS SYSTEMS, INC. will be substantially damaged by its unauthorized use, sale or distribution. In addition to recovery of all damages and the obtaining of injunctive relief as provided by law, in the event legal action must be taken to enforce this provision, the Licensee will pay DSD BUSINESS SYSTEMS, INC. all reasonable legal fees incurred in enforcing the rights of DSD BUSINESS SYSTEMS, INC. under this provision.

3. **RESTRICTIONS ON USE AND TRANSFER.** The original and any backup copies of the Program and its documentation are to be used only in connection with a single computer or network fileserver. You may physically transfer the Program from one computer to another, provided that the Program is used in connection with only one computer or network fileserver at a time. You may not distribute copies of the Program Documentation to others. The Program is to be used exclusively for business purposes and not for personal, family or household use. YOU MAY NOT USE, COPY, MODIFY, OR TRANSFER THE PROGRAM, IN WHOLE OR IN PART, EXCEPT AS EXPRESSLY PROVIDED FOR IN THIS LICENSE AGREEMENT. IN ADDITION YOU MAY NOT MODIFY, ADAPT, TRANSLATE, REVERSE ENGINEER, DECOMPILE, DISASSEMBLE THE PROGRAM, OR CREATE ANY DERIVATIVE WORK BASED UPON THE PROGRAM.
4. **WARRANTY.** DSD BUSINESS SYSTEMS, INC. software is licensed "as is" with no warranties of any kind, either expressed or implied, other than the following: DSD BUSINESS SYSTEMS will repair any bugs or flaws found in the software. Flaws of a critical nature which affect the basic functionality of the software will be repaired on an "emergency" basis, with a corrected distribution diskette sent via UPS Blue or equal. Flaws of a non-critical or cosmetic nature will be repaired on a timely basis, and a corrected distribution diskette sent via UPS ground or regular mail. All incidental or consequential damages that result from any defect in the software, even if DSD Business Systems, Inc. has been advised of the possibility of such damages will be assumed by you.

5. **LIMITED WARRANTY FOR DISKETTES.** To the original licensee only, DSD BUSINESS SYSTEMS, INC. warrants the magnetic diskette on which the Program is recorded to be free from defects in materials and faulty workmanship under normal use and service for a period of ninety days from the date the Program is delivered. Any implied warranties of merchantability and fitness for a particular purpose are limited in duration to the period of ninety (90) days from the date of delivery. If, during this 90 day period, a defect in the diskette should occur, the diskette may be returned DSD BUSINESS SYSTEMS, INC., 5120 Shoreham Place, Suite 280, San Diego, California, 92122, or to any authorized DSD BUSINESS SYSTEMS, INC. Dealer, and the diskette will be replaced without charge to you, provided that you have previously returned the Warranty Registration Card along with a copy of your sales receipt for the Program.
6. **NO OTHER WARRANTIES.** No dealer or distributor of DSD BUSINESS SYSTEMS, INC. products or any agent of DSD BUSINESS SYSTEMS, INC. is authorized to make any representation of warranty with respect to the Program except those expressly stated in the Customer License Agreement.
7. **LIMITATION OF LIABILITY.** Neither DSD BUSINESS SYSTEMS, INC. nor anyone else who has been involved in the creation, production or delivery of this program shall be liable for any direct, incidental or consequential damages.
8. **TERM.** This license is effective until terminated. You may terminate it at any time by returning the Program and Documentation together with all copies, modifications and merged portions in any form to DSD BUSINESS SYSTEMS, INC. The license will also be terminated by DSD BUSINESS SYSTEMS, INC. immediately and without notice if you fail to comply with any term or condition of this License Agreement.
9. **ACKNOWLEDGMENT.** Your opening this package, use of this program or signature on the warranty registration card acknowledges that you have read this customer license agreement and agree to its terms. You further agree that the license agreement is the complete and exclusive statement of the agreement between yourself and DSD BUSINESS SYSTEMS, INC. and supersedes any proposal or prior agreement, oral or written, and any other communications between yourself and DSD BUSINESS SYSTEMS, INC or dealers and distributors of DSD BUSINESS SYSTEMS, INC products relating to the subject matter of this agreement.
10. **ASSIGNMENT.** You may not sublicense this license or the Program. You may not rent this Program or the use of the Program. You may not transfer this copy of the Program unless the recipient agrees in writing (and a copy of such acceptance is sent to DSD BUSINESS SYSTEMS, INC., 5120 Shoreham Place, Suite 280, San Diego, California, 92122) to accept all of the terms of this Customer License Agreement. Any attempt by you to otherwise rent, sublicense, assign or transfer any of the rights, duties or obligation hereunder is void and may be the cause for immediate termination of the license. DSD BUSINESS SYSTEMS, INC. may assign any of its rights and obligation under this agreement to any party without notice to you.

Fax Transmittal Form

To:	<i>DSD Business Systems Customer Service</i>		Fax:	<i>858/550-4900</i>
From:	Name:		Phone:	
	Company:		Fax:	
Date:	/ /	# Pgs Including this Page:		
Subject:	Check One: <input type="checkbox"/> Product Problem <input type="checkbox"/> Suggestions			
Product:	<i>POMC Purchase Order Multi-Currency</i>		Version:	<i>4.30</i>

This page may be copied