



DSD
BUSINESS SYSTEMS

DSD Business Systems

MAS 90 Enhancements

MRWY
Electronic Media
Wyoming WIRE
Unemployment Reporting

Version 4.30



Information in this document is subject to change without notice.

Copyright 1993-2009, DSD Business Systems All rights reserved.

M/R Wyoming WIRE Unemployment Reporting User's Manual
Version 4.30

16 June, 2009

DSD Business Systems
5120 Shoreham Place
Suite 280
San Diego, CA 92122
858/550-5900 8:00am to 5:00pm PST
858/550-4900 Fax

Trademarks

ProvideX® is a Trademark of Sage Software.

Windows is a trademark of Microsoft Corporation.

MAS 90® is a registered trademark of Sage Software.

PXPlus® is a registered trademark of PVX Plus technologies

All other product names and brand names are service marks, and/or trademarks or registered trademarks of their respective companies.

This documentation and the software described herein, is prepared and published under license. Sage Software has not tested or verified either the software or any representation in this documentation regarding the software. Sage Software does not make any warranty with respect to either this documentation or the software described herein, and specifically disclaims any warranty, express or implied, with respect hereto, including the warranties of fitness for a particular purpose and merchantability.

Table of Contents

SECTION A: INTRODUCTION	5
WEB RESOURCES	5
HOW TO USE THIS DOCUMENTATION	6
SUPPORT	6
M/R WYOMING WIRE UNEMPLOYMENT REPORTING FEATURES	7
SECTION B: GETTING STARTED	8
REQUIRED LEVELS	8
INSTALLATION	8
DSD ENHANCEMENT CONTROL PANEL	10
SECTION C: OPERATIONS	11
WAGE PLAN CODE MAINTENANCE	11
USING THE WYOMING WIRE ELECTRONIC MEDIA REPORTING	12
SUMMARY REPORT	13
FAQ	15
Acceptable Media	Error! Bookmark not defined.
Format Being Used	15
File that is Created	15
Why Unemployment Wages Might be Reported Incorrectly	15
The Electronic Media Summary Totals are Different From Another Report	15
Making Archival Backups of Payroll Data	16
First Name Field	16
Unemployment Wages Reported	16
SECTION D: UNINSTALL DSD ENHANCEMENTS	17
LICENSE AGREEMENT	20
FAX TRANSMITTAL FORM	22

SECTION A: Introduction

This manual contains a description and instructions for this DSD product. Operating instructions are included for the features added by this product to MAS 90. For instructions on using MAS 90, refer to the appropriate MAS 90 manual, or call your MAS 90 reseller. DSD Business Systems offers excellent MAS 90 support, at an hourly rate.

Web Resources

M/R Wyoming Quarterly Unemployment Reporting web sites:

<http://www.doe.state.wy.us/does.asp?ID=700>

<https://doe.state.wy.us/wire/>

<https://doe.state.wy.us/wire/FileUpload/fileupload.aspx>

<https://doe.state.wy.us/WIRE/FileUpload/FileUpload.htm>

DSD web site: <http://www.dsdinc.com>

The Enhancement page contains:

Current Release Schedule

Purchasing Information

Installation Instructions

Product Support

Enhancement Links

MRWY M/R Wyoming WIRE Unemployment Media Reporting:

<http://www.dsdinc.com/enh/by-module/magnetic-media-electronic-reporting/MRWY.html>

The product web page contains:

Product Description

Web Links

Current Product Version Table

Product Installation File Download

Product Manual in Adobe Acrobat Format

Revision History

FAQ

How to Use This Documentation

The DSD Business Systems **Wyoming WIRE Unemployment Reporting (MRWY)** has been designed to work in conjunction with the Sage **MAS 90 Electronic Reporting** module. Before this software can be used, the **Electronic Reporting** module must be installed. Refer to the **Electronic Reporting** module for that module's installation instructions.

IMPORTANT: *Different Master Developers' enhancements have not been designed to work with each other. If you install two different enhancements on the same MAS 90 system, there is a good chance that programming and data file conflicts could lead to serious data integrity problems. Please check with DSD Business Systems if you are contemplating the installation of more than one enhancement on your system.*

The conventions used in this documentation are identical to those used in the **MAS 90** application modules. This documentation contains only a description of the **MRWY** modifications. **If you are having difficulty using the Sage program, please refer to that application's manual, or to Sage Product Support.** DSD Business Systems can support or answer questions related to the use of the standard **MAS 90** modules, but only at the DSD Business Systems normal hourly consulting rate.

If you are having difficulties, which you feel are the result of a problem or bug in this software, please contact DSD Business Systems at **858-550-5900**. Our fax number is **858-550-4900**.

Support

DSD provides product support through MAS 90 resellers. Support is provided for the current version. Older versions are supported at an hourly rate. DSD's telephone number is **858-550-5900**. Fax: **858-550-4900**.

For a hard error, where the program displays an error dialog, report:

Error number.

Program name.

Line number.

Program version.

Exact sequence that caused the error, including menus and menu selections.

Other pertinent information.

If leaving a message or faxing, please include:

Your name.

Your phone number (and fax if applicable) and extension.

It is possible to be unable to duplicate a problem, because of data corruption or because we have not exactly duplicated a particular operating environment. In such circumstances, we can only continue to try to fix the problem if we can either access the system with Symantec PCAnywhere or by some other means access or duplicate the system.

M/R Wyoming WIRE Unemployment Reporting Features

MRWY Wyoming WIRE Unemployment Reporting features:

- Generate electronic media compliant with the Wyoming WIRE Wage Information as required by the state of Wyoming. This report includes the following data:

- Employee Name*
- Social Security Number*
- Employer Account Number*
- Reporting Period*
- State Quarter Wages Subject to Unemployment Insurance*
- NAICS Code*

- The program is fully graphical.
- No standard MAS 90 programs are modified.
- A developer field is added to the PR1 Employee masterfile for the Officer and NAICS Codes.
- The file that is generated can be copied by the program to a diskette (non client server systems), or copied by the user to a CD-ROM, or submitted electronically
- Employees with negative wages are not reported (as required by the State of Wyoming). Employees that cannot be reported are listed as exceptions in the Summary Report.

SECTION B: Getting Started

CAUTION

- **If you reinstall or upgrade one of the MAS 90 modules listed in the following table, you must also reinstall this Enhancement.**
- Enhancements from different Master Developers are generally not designed to work together. If installed together, problems are likely to occur.
- **Check with DSD before installing more than one Enhancement.**
- **Do not install this Enhancement on MAS SQL Systems.**

Required Levels

MAS 90 Module	Module Required	Required Level
M/R	Y	4.30
P/R	Y	4.30

Installation

The following instructions are for installing to Windows. For UNIX instructions see the "INSTALL.HTM" HTML file on the CD-ROM (you can use a Windows machine to view it.) It will guide you in mounting the CD-ROM on the UNIX file system and running a UNIX installation script.

1. **Back-up:** Exit all MAS 90 / MAS 200 sessions. Back-up existing MAS 90 / MAS 200 data.
2. **Check Levels:** MAS 90 / MAS 200 module levels **must match** those listed above.
3. **Run Enhancement Setup Program:** Save the executable installation program (sent to you or downloaded from our website) in a convenient location on the MAS90/200 server. Launch the program from Windows Explorer or by selecting Start/Run, then browse for the file in the location you saved it. Follow on-screen instructions.
4. **Re-Start MAS 90 / MAS 200:** MAS 90 / MAS 200 will be updated.
5. **Unlock the Enhancement:** DSD Enhancements must be unlocked to run. When any part of the Enhancement is run for the first time, the **DSD Enhancement License Agreement and Activation** window will appear. Follow the steps shown on that window. *You can click the Help button for more detailed instructions.*

Note: On the next page is a screenshot of the DSD Enhancement License Agreement and Activation window.

After accepting the License Agreement, you can then select the type of unlocking that you'd prefer. The choices are Normal, Demo and Web.

Normal Unlock: You will need to unlock the Enhancement by calling DSD during business hours (8am to 5pm PST) at **858-550-5900**.

Web Unlock: If the system that is running the DSD Enhancement *has web access and you have a DSD WebUnlock code*, you can unlock the Enhancement without assistance using

WebUnlock. When this option is selected, the window will change to show the WebUnlock entry section. Enter the WebUnlock code and click the Unlock button.

- Entering a WebUnlock code will unlock all DSD Enhancements that have been licensed.
- The MAS 90 / MAS 200 system that is being used must have web access for this option to be available.
- You can get a WebUnlock Code from your DSD Enhancements sales representative.

Demo Unlock: If a Demo mode is available for the Enhancement you're running, you will be able to Demo unlock the product without assistance from DSD for demo purposes.

- Creating a Demo Unlock is a good way to temporarily unlock DSD Enhancements off-hours, if you do not have web access and/or a WebUnlock code. Later, you can unlock the product fully, during business hours.

Note: You can also unlock a DSD Enhancement through the **DSD Enhancement Control Panel** found on the Library Master Utilities Menu. Then, select the Enhancement with your mouse from the list of Enhancements and click the **Unlock Product** button on the right side of the window.

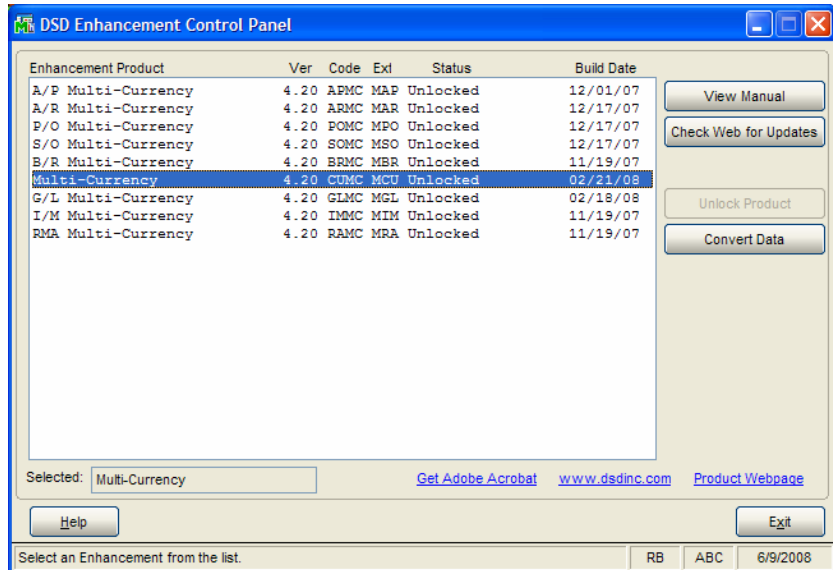
6. **Convert Data:** After registration, the Data Conversion window will appear. Follow on-screen instructions to complete data conversion. You can exit the conversion program without converting data. The Enhancement will not proceed, however, until data is converted. If you enter an enhanced program and data has not been converted, the conversion program will run again.

DSD Enhancement Control Panel

Starting with version 3.61, all DSD Enhancement products include DSD's Enhancement Control Panel. The **DSD Enhancement Control Panel is accessed from the Library Master Utilities menu.**

The DSD Enhancement Control Panel is a simple to use yet powerful system to help maintain DSD Enhancements installed on a MAS 90 / MAS 200 system. To use it, select an Enhancement product from the list on the window and then click the button, on the right side of the window, which corresponds with the desired task.

View Manual: This button will display the product manual for the selected Enhancement using Adobe Acrobat. For this to be possible, the PDF file for the corresponding manual must be in the "MAS90/PDF" folder in the MAS 90 system. If the file is not present, and the system has web access, the correct PDF file will be automatically downloaded from the DSD website, put into the "MAS90/PDF" folder and then displayed.



Check the Web for Updates: This button will check the DSD website to see what the current build is the selected Enhancement and alert the user if a later version is available. *This requires an ftp web connection on the MAS 90 / MAS 200 system.*

Unlock Product: This will cause the DSD Enhancement License Agreement and Activation window to appear. Using this window is described on the previous page. *This button is disabled if the selected Enhancement is already unlocked.*

Convert Data: After verification, the selected Enhancements data conversion program will run. Data conversion is non-destructive, and may be triggered any number of times. Sometimes this is required to fix data records imported or updated from a non-enhancement installation.

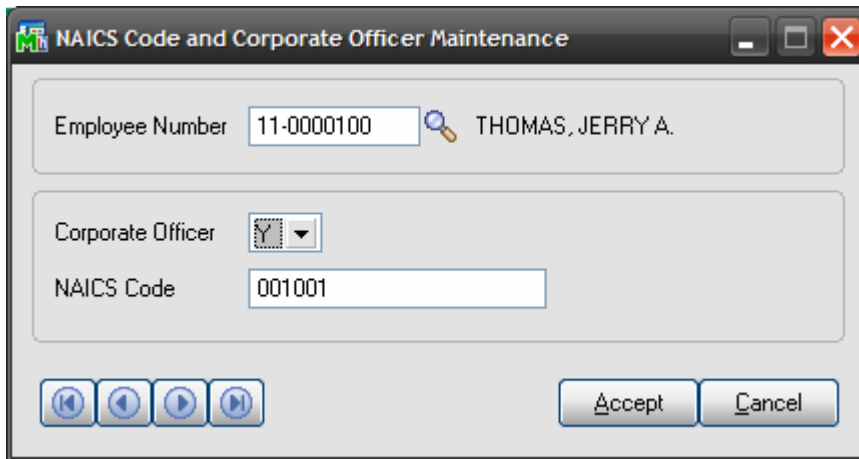
Help: The Help button, located at the bottom left of the window, opens an HTML help file .

Get Adobe Acrobat: Opens the Adobe Acrobat website to the page where Acrobat can be downloaded and installed.

There are also links to the DSD website and the Enhancement page on that site.

SECTION C: Operations

WIRE NAICS and Corporate Officer Code Maintenance



The screenshot shows a software window titled "NAICS Code and Corporate Officer Maintenance". The window has a search bar with "Employee Number" set to "11-0000100" and a magnifying glass icon next to "THOMAS, JERRY A.". Below the search bar is a "Corporate Officer" dropdown menu with "Y" selected. The "NAICS Code" field contains "001001". At the bottom of the window, there are four navigation buttons (Home, Back, Forward, End) and "Accept" and "Cancel" buttons.

The **Wyoming WIRE Electronic Media** enhancement **Wage Plan Code Maintenance** Screen can be accessed from the **Electronic Reporting Main** menu. Selection of an employee can be done by either lookup or browsing.

A **NAICS Code and Officer Flag (Yes or No)** must be assigned to each employee, as required for WIRE reporting.

NAICS Code: Enter the wage plan that is assigned for the employee. Code lookups can be found on the web here: <http://www.census.gov/naics/>

Officer Flag: If the employee is a corporate officer, select Y, otherwise select N.

Using the Wyoming WIRE Electronic Media Reporting

Wyoming WIRE Unemployment Electronic Media Reporting is accessible from the M/R Electronic Reporting Main menu.

The screenshot shows a software dialog box titled "Wyoming WIRE File Generation". It has a standard Windows-style title bar with minimize, maximize, and close buttons. The main area is divided into two columns of input fields. The left column contains a "Company Name" field with the text "ABC DISTRIBUTION AND SERVICE CORP". The right column contains "Payment Year" (2010), "Payment Qtr" (2), "Employer ID" (123456789), and "WY UI Acct" (132465798). Below these fields, there are two rows for "Starting" and "Ending" employee numbers. The "Starting" field has a checkmark icon and the text "00-". The "Ending" field has a magnifying glass icon and the text "??-??/??/??". At the bottom right of the dialog are "Proceed" and "Cancel" buttons. A status bar at the very bottom displays "Enter Company Name", "ABC", and "4/30/2009".

Name : Enter the name for the **company** that is reporting. These fields will default to the information found in Company Maintenance.

Payment Year: Enter the year in which you are reporting.

Payment Qtr: Enter the quarter in which you are reporting. This field will default to the current Payroll quarter. *The Payment Quarter should always be set to the current Payroll quarter.*

Wyoming State Employer Account Number: Enter EIN assigned by the Wyoming.

Starting Employee Number: Enter the Starting Employee Number for reporting selection. An <F2> list mode is available for this field.

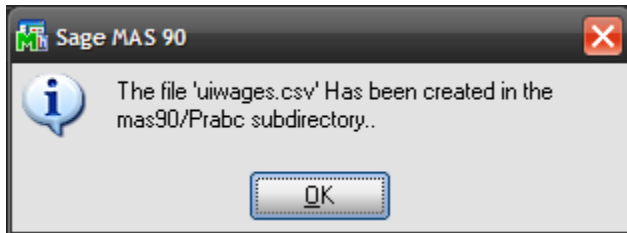
Ending Employee Number: Enter the Ending Employee Number for reporting selection. An <F2> list mode is available for this field.

After entering the data, click the Proceed button. The program will then create the DE-6 data file after verifying the data entry. Note that the data will be retained for the next time that the program is used.

The program will create a file called **UIWAGE.csv** in the MAS 90 system's Payroll data folder for the selected Company. For example, for the "ABC" Company, the data would be in the **MAS90/MAS_ABC/PRABC** folder.

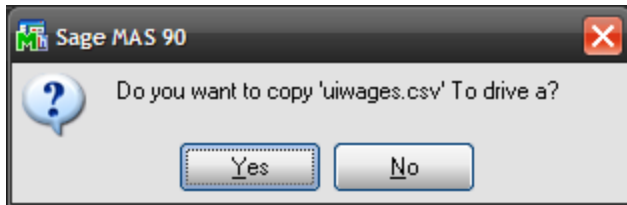
Note: In client sever systems, the **UIWAGE.csv** file will be created in the **MAS90/HOME** folder.

After creating the **UIWAGE.csv** file, the program will display the following dialog:



Click the OK button to proceed.

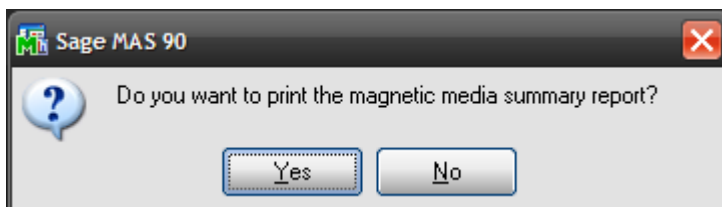
The program will then display this dialog:



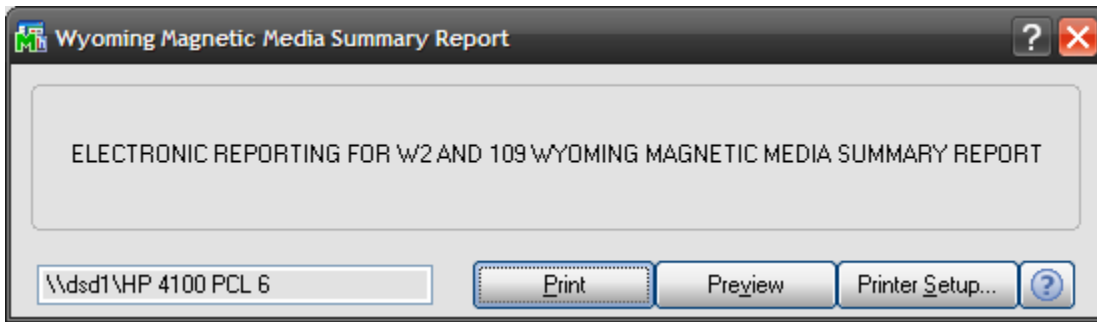
As noted on the dialog, on client server systems, if you click Yes to copy the data file, it will be copied to the diskette drive on the server where MAS90 is hosted.

Summary Report

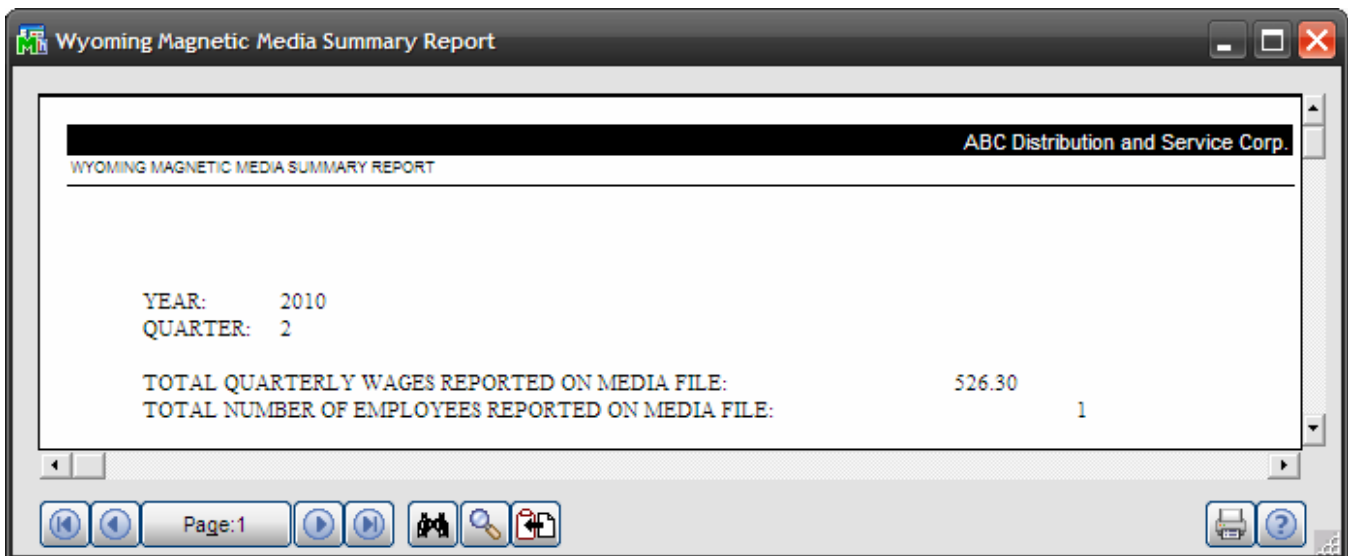
After clicking either the Yes or No button, (and after copying the data if Yes was selected) the following will be displayed (if exceptions are encountered, this dialog will say so in addition to what is displayed below):



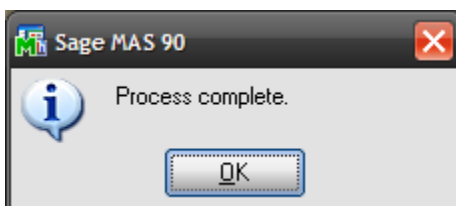
If you click the Yes button, the print dialog will be displayed:



Print or Preview the summary report, if desired. If exceptions are encountered, they will be listed on this report (none shown in example). Exceptions include employees with negative wages (cannot be reported per the specification) or employees whose wages would exceed the length of the field in the report file.



After (optionally) printing the Summary Report, the program will signal completion with the following dialog:



Clicking OK will complete the operation.

FAQ***Format Being Used***

The Wyoming WIRE accepts either Excel or Comma Separated Values files. DSD creates a comma separated values format file.

File that is Created

The name of the file produced by MRWY is **UIWAGE.csv**

The program will create a file called **UIWAGE.csv** in the MAS 90 system's Payroll data folder for the selected Company. For example, for the "ABC" Company, the data would be in the **MAS90/MAS_ABC/PRABC** folder.

Note: *In client sever systems, the **UIWAGE.csv** file will be created in the **MAS90/HOME** folder.*

Why Unemployment Wages Might be Reported Incorrectly

The most common reason Unemployment Wages for a particular employee are reported incorrectly is that a deduction was not made because an Earnings Code was not set up correctly so a deduction would be made in Unemployment Wages.

The MRWY program reports exactly what is contained in **QTD Wages Subject To Unemployment** field the **Employee's P/R Employee Tax Summary File** record (for technical readers, this is the PR3[9] numeric).

To correct Unemployment Wages before reporting, use the **Fix** button in **Employee Maintenance** (click the **Tax Summary** button and then the **Fix** button). Supervisor rights are required to access the Fix button.

The Electronic Media Summary Totals are Different From Another Report

Note that the specification for the electronic media report differs from the specification for a printed report. For example, employees with negative numbers for wages or zero wages cannot be reported in the media file according to the specification.

The Quarterly Tax Summary Report may not match the Electronic Media Summary Report due to either the Limit not being applied, deduction codes for Cafeteria plan, or non-taxable wages not being set up properly.

Making Archival Backups of Payroll Data

MAS 90 does not retain summary data from previous quarters. It is good practice to make a permanent copy of a quarter's Payroll data before running Period End Processing. When Period End Processing is run, the total buckets are cleared.

To report from a previous quarter, make a copy of the current Payroll data, restore the Payroll data from the desired quarter, make a report and then restore the current quarter Payroll data.

First Name Field

Wyoming requires that data in the first name field consist of the first name (only) not an initial and no middle or second name. The MRWY program examines the First Name field for the employee and extracts only the first word (everything up to a blank space or the end of the field).

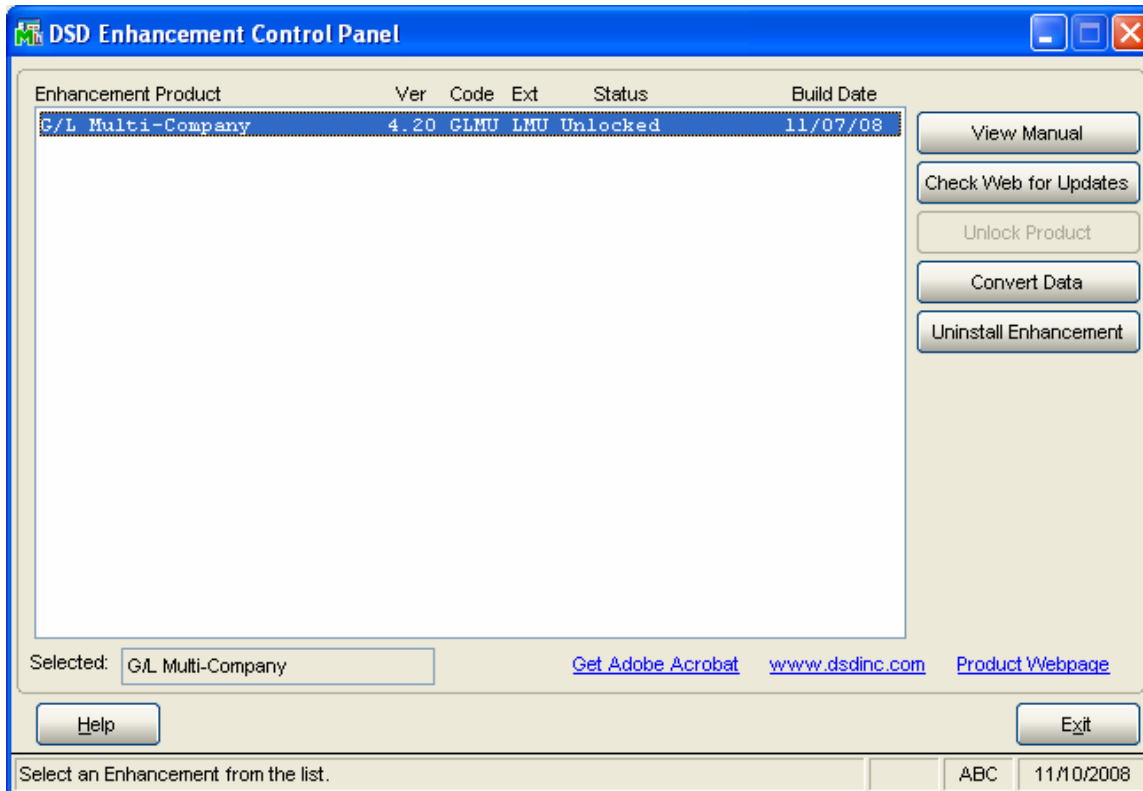
It is important that the First name be present in Employee Maintenance, for every employee being reported.

Unemployment Wages Reported

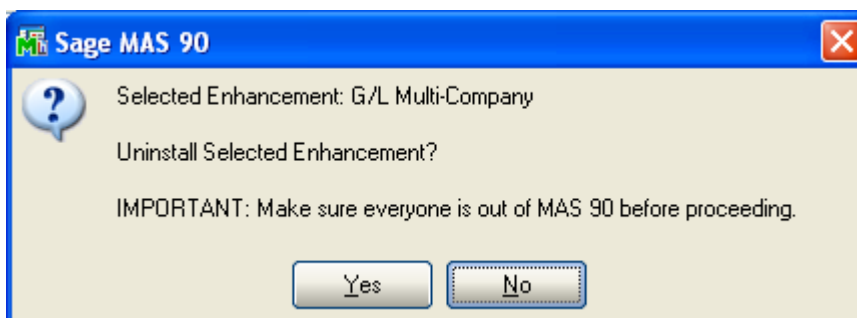
Taxable limits are not applied to unemployment wages reported.

Section D: Uninstall DSD Enhancements

A DSD Enhancements Uninstall Utility has been provided for the purposes of removing DSD Enhancements from your MAS 90/200 System. This utility may be accessed from the **DSD Enhancement Control Panel** menu option on the **Library Master / Utilities** menu.

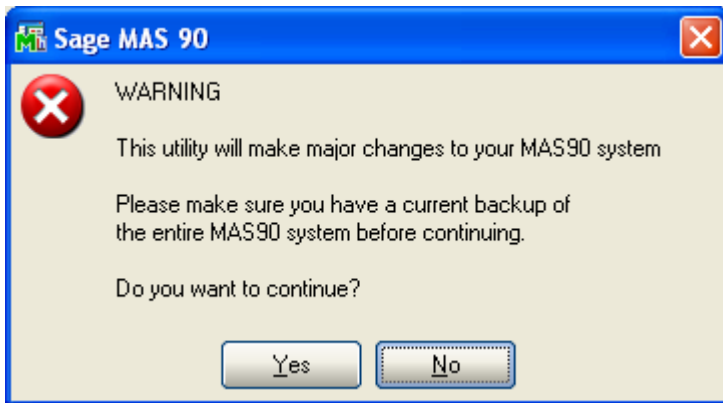


When accessing the **DSD Utility Suite**, select the enhancement that you wish to Uninstall, and then select the **Uninstall Enhancement** button. The following message box will appear:



Select **No** to exit the Uninstall Process.
 Select **Yes** to continue with the Uninstall Process.

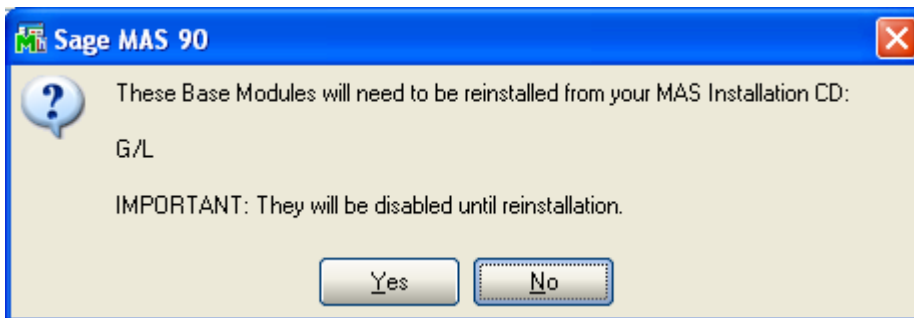
The following message box will appear, to remind you that a complete backup of your entire MAS90 system should be completed prior to uninstalling a DSD product.



Select **No** to exit the Uninstall Process.
Select **Yes** to continue with the Uninstall Process.

After the Uninstall of the DSD Enhancement, you MUST reinstall certain standard MAS 90/200 modules, followed by reinstallation of MAS Service Packs / Updates, if applicable.

The following message box will appear, and will display which of those specific MAS 90/200 modules you must reinstall afterwards.

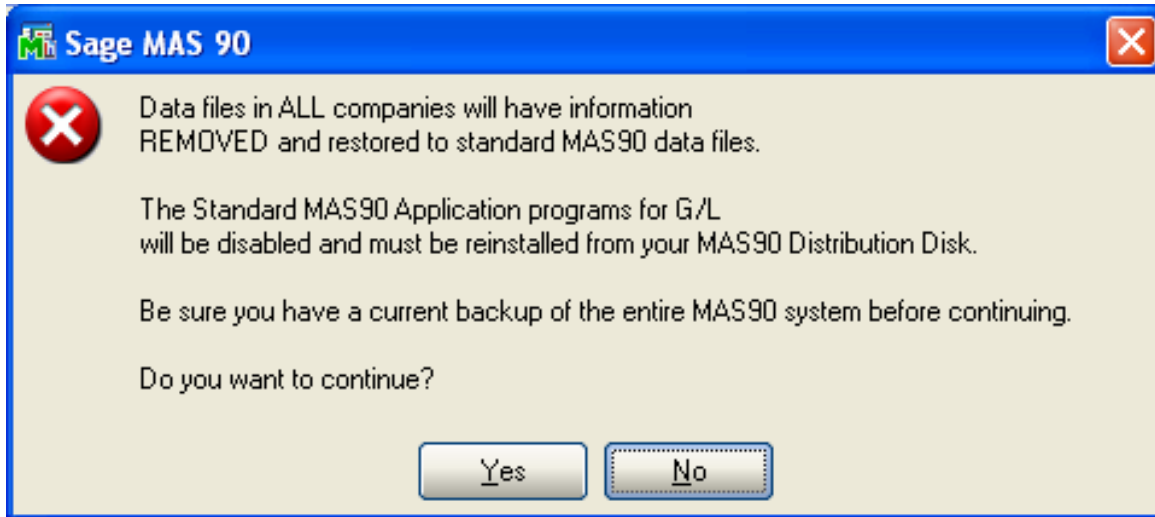


Select **No** to exit the Uninstall Process.
Select **Yes** to continue with the Uninstall Process.

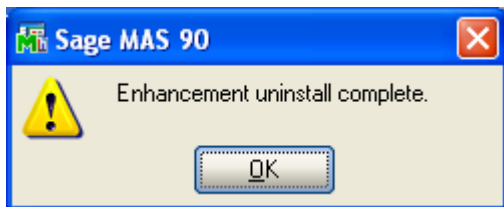
The following message box will appear, displaying the final warning message.

Select **No** to exit the Uninstall Process.

Select **Yes** to continue with the Uninstall Process. At this point, the DSD Enhancement will be removed from the MAS 90/200 system.



After completion of the Uninstall, the following message box will appear. Select OK to continue.



Now that the Uninstall process is completed, you must:

- Reinstall the applicable standard MAS 90/200 modules
- Reinstall the latest MAS 90/200 Service Pack/Updates, if applicable.
- Reinstall any other DSD Enhancements or Developer products that are affected from the reinstallation of the standard MAS 90/200 module(s).

License Agreement

IMPORTANT: THIS SOFTWARE IS LICENSED BY DSD BUSINESS SYSTEMS, INC. TO CUSTOMERS FOR THEIR USE ONLY IN ACCORDANCE WITH THE TERMS SET FORTH IN THIS CUSTOMER LICENSE AGREEMENT. OPENING OR USING THIS PACKAGE CONSTITUTES ACCEPTANCE OF THESE TERMS. IF THE TERMS OF THIS LICENSE ARE NOT ACCEPTABLE, THE CUSTOMER MAY OBTAIN A FULL REFUND OF ANY MONEY PAID IF THIS UNUSED, UNOPENED PACKAGE IS RETURNED WITHIN TEN (10) DAYS TO THE DEALER FROM WHICH IT WAS ACQUIRED.

1. **LICENSE. DSD BUSINESS SYSTEMS, INC.,** a Wyoming corporation as Licensor and owner hereby agrees to grant you as Licensee a non-exclusive license to use the enclosed software subject to the terms and restrictions set forth in this License Agreement. Title in and ownership of all programs and program enhancements or modifications written by DSD Business Systems, Inc. shall remain at all times vested in DSD Business Systems, Inc. The right granted by this Customer License Agreement and your payment of the non-refundable License fee is the right to use the Program in accordance with the terms of this Customer License Agreement. Delivery of a copy of the Program to you is made solely to enable you to exercise this right.
2. **COPYRIGHT.** This Program is copyrighted and all rights are reserved by DSD BUSINESS SYSTEMS, INC. and SAGE, INC. You may not copy or reproduce any part of the Program except to copy the Program for backup purposes. If you make a backup copy you must reproduce and include the copyright notice on it. The distribution of the product is intended for the use of the original Licensee only and for use only on the computer systems specified. Lawful users of this Program are hereby licensed only to read the Program from its medium into the memory of a computer only for the purpose of executing the program.

The documentation is also copyrighted and all rights are reserved. This document may not, in whole or in part, be copied, photocopied, reproduced, translated, transmitted or reduced to any electronic medium of machine readable form without prior consent, in writing, from DSD BUSINESS SYSTEMS, INC.

The Licensee recognizes that DSD BUSINESS SYSTEMS, INC. has expended considerable time, effort and money to develop the licensed Software and Manual and that DSD BUSINESS SYSTEMS, INC. will be substantially damaged by its unauthorized use, sale or distribution. In addition to recovery of all damages and the obtaining of injunctive relief as provided by law, in the event legal action must be taken to enforce this provision, the Licensee will pay DSD BUSINESS SYSTEMS, INC. all reasonable legal fees incurred in enforcing the rights of DSD BUSINESS SYSTEMS, INC. under this provision.

3. **RESTRICTIONS ON USE AND TRANSFER.** The original and any backup copies of the Program and its documentation are to be used only in connection with a single computer or network fileserver. You may physically transfer the Program from one computer to another, provided that the Program is used in connection with only one computer or network fileserver at a time. You may not distribute copies of the Program Documentation to others. The Program is to be used exclusively for business purposes and not for personal, family or household use. YOU MAY NOT USE, COPY, MODIFY, OR TRANSFER THE PROGRAM, IN WHOLE OR IN PART, EXCEPT AS EXPRESSLY PROVIDED FOR IN THIS LICENSE AGREEMENT. IN ADDITION YOU MAY NOT MODIFY, ADAPT, TRANSLATE, REVERSE ENGINEER, DECOMPILE, DISASSEMBLE THE PROGRAM, OR CREATE ANY DERIVATIVE WORK BASED UPON THE PROGRAM.
4. **WARRANTY.** DSD BUSINESS SYSTEMS, INC. software is licensed "as is" with no warranties of any kind, either expressed or implied, other than the following: DSD BUSINESS SYSTEMS will repair any bugs or flaws found in the software. Flaws of a critical nature which affect the basic functionality of the software will be repaired on an "emergency" basis, with a corrected distribution diskette sent via UPS Blue or equal. Flaws of a non-critical or cosmetic nature will be repaired on a timely basis, and a corrected distribution diskette sent via UPS ground or regular mail. All incidental or consequential damages that result from any defect in the software, even if DSD Business Systems, Inc. has been advised of the possibility of such damages will be assumed by you.

5. **LIMITED WARRANTY FOR DISKETTES.** To the original licensee only, DSD BUSINESS SYSTEMS, INC. warrants the magnetic diskette on which the Program is recorded to be free from defects in materials and faulty workmanship under normal use and service for a period of ninety days from the date the Program is delivered. Any implied warranties of merchantability and fitness for a particular purpose are limited in duration to the period of ninety (90) days from the date of delivery. If, during this 90 day period, a defect in the diskette should occur, the diskette may be returned DSD BUSINESS SYSTEMS, INC., 5120 Shoreham Place, Suite 280, San Diego, Wyoming, 92122, or to any authorized DSD BUSINESS SYSTEMS, INC. Dealer, and the diskette will be replaced without charge to you, provided that you have previously returned the Warranty Registration Card along with a copy of your sales receipt for the Program.
6. **NO OTHER WARRANTIES.** No dealer or distributor of DSD BUSINESS SYSTEMS, INC. products or any agent of DSD BUSINESS SYSTEMS, INC. is authorized to make any representation of warranty with respect to the Program except those expressly stated in the Customer License Agreement.
7. **LIMITATION OF LIABILITY.** Neither DSD BUSINESS SYSTEMS, INC. nor anyone else who has been involved in the creation, production or delivery of this program shall be liable for any direct, incidental or consequential damages.
8. **TERM.** This license is effective until terminated. You may terminate it at any time by returning the Program and Documentation together with all copies, modifications and merged portions in any form to DSD BUSINESS SYSTEMS, INC. The license will also be terminated by DSD BUSINESS SYSTEMS, INC. immediately and without notice if you fail to comply with any term or condition of this License Agreement.
9. **ACKNOWLEDGMENT.** Your opening this package, use of this program or signature on the warranty registration card acknowledges that you have read this customer license agreement and agree to its terms. You further agree that the license agreement is the complete and exclusive statement of the agreement between yourself and DSD BUSINESS SYSTEMS, INC. and supersedes any proposal or prior agreement, oral or written, and any other communications between yourself and DSD BUSINESS SYSTEMS, INC or dealers and distributors of DSD BUSINESS SYSTEMS, INC products relating to the subject matter of this agreement.
10. **ASSIGNMENT.** You may not sublicense this license or the Program. You may not rent this Program or the use of the Program. You may not transfer this copy of the Program unless the recipient agrees in writing (and a copy of such acceptance is sent to DSD BUSINESS SYSTEMS, INC., 5120 Shoreham Place, Suite 280, San Diego, Wyoming, 92122) to accept all of the terms of this Customer License Agreement. Any attempt by you to otherwise rent, sublicense, assign or transfer any of the rights, duties or obligation hereunder is void and may be the cause for immediate termination of the license. DSD BUSINESS SYSTEMS, INC. may assign any of its rights and obligation under this agreement to any party without notice to you.

Fax Transmittal Form

To:	<i>DSD Business Systems Customer Service</i>		Fax:	<i>858/550-4900</i>
From:	Name:		Phone:	
	Company:		Fax:	
Date:	/ /	# Pgs Including this Page:		
Subject:	Check One: <input type="checkbox"/> Product Problem <input type="checkbox"/> Suggestions			
Product:	<i>MRWY M/R Wyoming WIRE Unemployment Electronic Media Reporting</i>		Version:	<i>4.30</i>

This page may be copied