



DSD
BUSINESS SYSTEMS

DSD Business Systems

MAS 90 Enhancements

GLCN

Multi-Company Financial Consolidation

Version 4.30



Information in this document is subject to change without notice.

Copyright 1993-2008, DSD Business Systems All rights reserved.

G/L Multi-Company Financial Consolidation User's Manual
Version 4.30

23 December, 2008

DSD Business Systems
5120 Shoreham Place
Suite 280
San Diego, CA 92122
858/550-5900 8:00am to 5:00pm PST
858/550-4900 Fax

Trademarks

ProvideX[®] is a Trademark of Sage Software.

Windows is a trademark of Microsoft Corporation.

MAS 90[®] is a registered trademark of Sage Software.

PXPlus[®] is a registered trademark of PVX Plus technologies

All other product names and brand names are service marks, and/or trademarks or registered trademarks of their respective companies.

This documentation and the software described herein, is prepared and published under license. Sage Software has not tested or verified either the software or any representation in this documentation regarding the software. Sage Software does not make any warranty with respect to either this documentation or the software described herein, and specifically disclaims any warranty, express or implied, with respect hereto, including the warranties of fitness for a particular purpose and merchantability.

Table of Contents

SECTION A: INTRODUCTION	6
WEB RESOURCES	6
SUPPORT	6
G/L MULTI-COMPANY FINANCIAL CONSOLIDATION FEATURES	7
SECTION B: GETTING STARTED	8
REQUIRED LEVELS	8
INSTALLATION	8
DSD ENHANCEMENT CONTROL PANEL	10
SECTION C: OPERATIONS	11
USING THE MULTI-COMPANY CONSOLIDATION PROGRAM	11
SETTING UP THE CONSOLIDATION COMPANY	11
MULTI-COMPANY CONSOLIDATION PANEL	12
Company Code Entry	13
Entering General Ledger Accounts	13
Budgets vs. Actual	13
Transaction Date Range	13
PERFORMING THE CONSOLIDATION PROCESS IMMEDIATELY	13
DELAYING THE CONSOLIDATION PROCESS	14
SECTION D: TECHNICAL OVERVIEW	15
HOW DOES THE CONSOLIDATION PROGRAM WORK?	15
Backup / Clear Phase	15
Phase 1 – Setup file Consolidation	16
Phase 2 – Account Consolidation	16
Phase 3 – G/L Detail Posting Consolidation	16
Phase 4 – G/L Budget Consolidation	16
Account Balance Recalculation	16
WHAT GENERAL LEDGER REPORTS MAY I RUN?	17
WHAT GENERAL LEDGER DATA IS NOT INCLUDED?	17
CAN I DO NORMAL PROCESSING IN THE CONSOLIDATION COMPANY?	17
SECTION E: WHAT'S NEW?	18
VERSION 4.00	18
VERSION 4.05 – 11/7/05	18
VERSION 4.10	18
SECTION F: UNINSTALL DSD ENHANCEMENTS	19

G/L Multi-Company Financial Consolidation **5**

LICENSE AGREEMENT **22**

FAX TRANSMITTAL FORM **24**

SECTION A: Introduction

This manual contains a description and instructions for this DSD product. Operating instructions are included for the features added by this product to MAS 90. For instructions on using MAS 90, refer to the appropriate MAS 90 manual, or call your MAS 90 reseller. DSD Business Systems offers excellent MAS 90 support, at an hourly rate.

Web Resources

DSD web site: <http://www.dsdinc.com>

The Enhancement page contains:

- Current Release Schedule*
- Purchasing Information*
- Installation Instructions*
- Product Support*
- Enhancement Links*

GLCN G/L Multi-Company Financial Consolidation: <http://www.dsdinc.com/enh/pages/GLCN.htm>

The product web page contains:

- Product Description*
- Adobe Acrobat Product Description*
- Web Links*
- Current Product Version Table*
- Product Installation File Download*
- Product Manual in Word 97 and Adobe Acrobat Formats*
- Revision History*
- FAQ*

Support

DSD provides product support through MAS 90 resellers. Support is provided for the current version. Older versions are supported at an hourly rate. DSD's telephone number is **858-550-5900**. Fax: **858-550-4900**.

For a hard error, where the program displays an error dialog, report:

- Error number.*
- Program name.*
- Line number.*

Program version.

Exact sequence that caused the error, including menus and menu selections.

Other pertinent information.

If leaving a message or faxing, please include:

Your name.

Your phone number (and fax if applicable) and extension.

It is possible to be unable to duplicate a problem, because of data corruption or because we have not exactly duplicated a particular operating environment. In such circumstances, we can only continue to try to fix the problem if we can either access the system with Symantec PCAnywhere or by some other means access or duplicate the system.

G/L Multi-Company Financial Consolidation Features

GLCN allows the **General Ledger** user to combine any number of companies' General Ledger data into one consolidation company, for the purpose of printing combined Financial Statements. This is extremely useful for the following reasons:

- After this utility has been used to combine the various companies' data, many of the GL Reports, including the **Financial Reports**, may be run for the consolidation company. The alternative would be the creation of a **Custom Financial** or using **FRx** to combine the companies. The **Custom Financial** is difficult to create, it must be maintained on an ongoing basis when accounts are added or removed from any of the consolidating companies, and the **Custom Financial Statement Update** takes much longer to run than does this utility.
- Another use of **GLCN** is to consolidate to one company, for reporting purposes, and then to use custom financials. This can simplify the process of creating and maintaining custom financials.
- If a complex set of relationships exist among all of the companies, it is easy to create a number of "imaginary" companies strictly for the purposes of consolidating General Ledger data, and reporting various combinations of them in different ways, without creating Custom Financials.

SECTION B: Getting Started

CAUTION

- **If you reinstall or upgrade one of the MAS 90 modules listed in the following table, you must also reinstall this Enhancement.**
- Enhancements from different Master Developers are generally not designed to work together. If installed together, problems are likely to occur.
- **Check with DSD before installing more than one Enhancement.**
- **Do not install this Enhancement on MAS SQL Systems.**

Required Levels

MAS 90 Module	Module Required	Required Level
G/L	Y	4.30

Installation

The following instructions are for installing to Windows. For UNIX instructions see the "INSTALL.HTM" HTML file on the CD-ROM (you can use a Windows machine to view it.) It will guide you in mounting the CD-ROM on the UNIX file system and running a UNIX installation script.

1. **Back-up:** Exit all MAS 90 / MAS 200 sessions. Back-up existing MAS 90 / MAS 200 data.
2. **Check Levels:** MAS 90 / MAS 200 module levels **must match** those listed above.
3. **Run Enhancement Setup Program:** Save the executable installation program (sent to you or downloaded from our website) in a convenient location on the MAS90/200 server. Launch the program from Windows Explorer or by selecting Start/Run, then browse for the file in the location you saved it. Follow on-screen instructions.
4. **Re-Start MAS 90 / MAS 200:** MAS 90 / MAS 200 will be updated.
5. **Unlock the Enhancement:** DSD Enhancements must be unlocked to run. When any part of the Enhancement is run for the first time, the **DSD Enhancement License Agreement and Activation** window will appear. Follow the steps shown on that window. *You can click the Help button for more detailed instructions.*

Note: On the next page is a screenshot of the DSD Enhancement License Agreement and Activation window.

After accepting the License Agreement, you can then select the type of unlocking that you'd prefer. The choices are Normal, Demo and Web.

Normal Unlock: You will need to unlock the Enhancement by calling DSD during business hours (8am to 5pm PST) at **858-550-5900**.

Web Unlock: If the system that is running the DSD Enhancement *has web access* and you *have a DSD WebUnlock code*, you can unlock the Enhancement without assistance using

WebUnlock. When this option is selected, the window will change to show the WebUnlock entry section. Enter the WebUnlock code and click the Unlock button.

- *Entering a WebUnlock code will unlock all DSD Enhancements that have been licensed.*
- *The MAS 90 / MAS 200 system that is being used must have web access for this option to be available.*
- *You can get a WebUnlock Code from your DSD Enhancements sales representative.*

Demo Unlock: If a Demo mode is available for the Enhancement you're running, you will be able to Demo unlock the product without assistance from DSD for demo purposes.

- *Creating a Demo Unlock is a good way to temporarily unlock DSD Enhancements off-hours, if you do not have web access and/or a WebUnlock code. Later, you can unlock the product fully, during business hours.*

Note: You can also unlock a DSD Enhancement through the **DSD Enhancement Control Panel** found on the Library Master Utilities Menu. Then, select the Enhancement with your mouse from the list of Enhancements and click the **Unlock Product** button on the right side of the window.

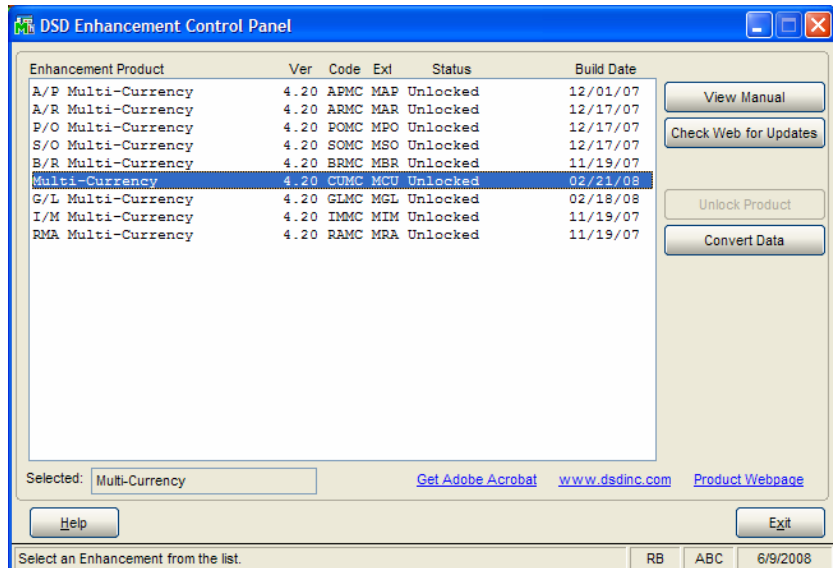
6. **Convert Data:** After registration, the Data Conversion window will appear. Follow on-screen instructions to complete data conversion. You can exit the conversion program without converting data. The Enhancement will not proceed, however, until data is converted. If you enter an enhanced program and data has not been converted, the conversion program will run again.

DSD Enhancement Control Panel

Starting with version 3.61, all DSD Enhancement products include DSD's Enhancement Control Panel. The **DSD Enhancement Control Panel is accessed from the Library Master Utilities menu.**

The DSD Enhancement Control Panel is a simple to use yet powerful system to help maintain DSD Enhancements installed on a MAS 90 / MAS 200 system. To use it, select an Enhancement product from the list on the window and then click the button, on the right side of the window, which corresponds with the desired task.

View Manual: This button will display the product manual for the selected Enhancement using Adobe Acrobat. For this to be possible, the PDF file for the corresponding manual must be in the "MAS90/PDF" folder in the MAS 90 system. If the file is not present, and the system has web access, the correct PDF file will be automatically downloaded from the DSD website, put into the "MAS90/PDF" folder and then displayed.



Check the Web for Updates: This button will check the DSD website to see what the current build is the selected Enhancement and alert the user if a later version is available. *This requires an ftp web connection on the MAS 90 / MAS 200 system.*

Unlock Product: This will cause the DSD Enhancement License Agreement and Activation window to appear. Using this window is described on the previous page. *This button is disabled if the selected Enhancement is already unlocked.*

Convert Data: After verification, the selected Enhancements data conversion program will run. Data conversion is non-destructive, and may be triggered any number of times. Sometimes this is required to fix data records imported or updated from a non-enhancement installation.

Help: The Help button, located at the bottom left of the window, opens an HTML help file .

Get Adobe Acrobat: Opens the Adobe Acrobat website to the page where Acrobat can be downloaded and installed.

There are also links to the DSD website and the Enhancement page on that site.

SECTION C: Operations

Using the Multi-Company Consolidation Program

The menu entry for the **Multi-Company Consolidation** is added to the bottom on the **Utilities** menu in **General Ledger**.

This new menu option need only be accessed from one of the consolidation companies. In other words, if you are combining companies **001**, **002**, and **003** into the **999** consolidation company, the **Multi-Company Consolidation Utility** should only be accessed and used from the **999** company.

Note: Do NOT use this utility on a non-Consolidation Company Code. This utility backs-up, then erases the GL Data Files prior to consolidation, so running this utility from a non-Consolidation Company Code may cause data loss. If you accidentally do this on the wrong company, please contact DSD Enhancement Support immediately.

Note: You may only consolidate companies that have the same:

1. GL Account Structure (i.e. G/L Account Mask) as the consolidation company. For example, if you have set up the Consolidation Company to have an Account Structure of **12345-67-890**, then the companies to consolidate must have this same account mask.
2. Fiscal Year Setup. This utility combines fiscal year setups, so if one company has a year-end of 12/31 and another company has a year-end of 03/30, then the consolidation will have unexpected results.

Setting Up the Consolidation Company

There are 2 ways to setup a new Consolidation Company Code:

1. Create the Consolidation Company from Company Maintenance, activate the G/L Module, and setup the G/L Data from scratch. This includes setting up the account structure and source journals.
2. Create the Consolidation Company from Company Maintenance and use the **Copy Button** in Company Maintenance to copy the data from another company. This option tends to be quicker setup.

Multi-Company Consolidation Panel

The menu entry for the **Multi-Company Consolidation** is added to the bottom on the **Utilities** menu in **General Ledger**.

This program is used to setup the list of companies that are to be consolidated into the current company.

Note: ONLY use this program on a Consolidation Company Code. This utility backs-up, then erases the GL Data Files prior to consolidation, so running this utility from a non-Consolidation Company Code may cause data loss.

For each company being consolidated, the user is given the opportunity to define the **beginning** and **ending General Ledger** accounts that are to be brought in. **Please note that this utility does not check (or care) whether the consolidated General Ledger is in balance!** If you plan to print a consolidated **Balance Sheet**, it is suggested that all accounts be brought in from the consolidating companies. If, however, you only plan to print Income Statements, or non-financial reports, it would be acceptable to import just a range of accounts.

	Company	Beginning Account	Ending Account	Budget
1	ABC	100-00-00	990-00-00	Both
2	ABB	100-00-00	990-00-00	Actual
3				

All
 Starting
 Ending

Transaction Date 01/01/1900
 01/01/2999
 Erase Existing Detail

Company Code Entry

When the **Company Code** is entered, the consolidating company's **General Ledger** data is immediately checked to make sure the companies Account Structure matches the Consolidation Company and an error message will appear if the Account Structure is not the same.

An **<F2> ALE Lookup** is available for displaying a list of all existing company codes. This display lists all companies, regardless of the existence of General Ledger data for each. The current Company Code may not be entered as one of the consolidating companies.

Entering General Ledger Accounts

The user may elect to import only a range of General Ledger accounts from the consolidating company. If you want to consolidate ALL accounts for this company, you must still select the first account as the Beginning Account and the last account as the Ending Account. An **<F2> ALE Lookup** is available for the **Beginning** and **Ending Account** fields.

Budgets vs. Actual

The user may select from **three** options:

Actual – The consolidation process will only bring in G/L Detail and Summary, and NOT Budgets.

Budget – The consolidation process will only bring in Budget data, and NOT G/L Detail or Summary.

Both - The consolidation process will bring in BOTH Budget data, G/L Detail, and Summary.

Transaction Date Range

This option allows users to NOT erase existing Consolidation Company Data, and to pull in a specific Date Range of activity. This is useful for users that do consolidations, followed by adjusting entries into the Consolidation Company.

Erase Existing Detail: Uncheck this checkbox if you do NOT want to erase existing G/L Detail in the Consolidation Company.

Select the **Save Button** to save the companies entered.

Select the **Clear Button** to clear the companies entered.

Select the **Printer Button** to print a listing of the companies and associated account ranges entered.

Performing the Consolidation Process Immediately

Select the **Proceed Button** to immediately consolidate the companies into the current company. As the consolidation process takes place, the user will see the following phases:

1. **Backup / Clear Phase** – this phase backs up the data files that are about to be cleared, and then clears those files.
2. **Phase 1** – this phase consolidates the setup files, such as Account Structure, Account Groups, Account Categories, Main Accounts, Sub Accounts.
3. **Phase 2** – this phase consolidates the G/L Chart of Accounts.
4. **Phase 3** – this phase consolidates the G/L Detail Postings.
5. **Phase 4** - this phase consolidates the G/L Budgets.
6. **Account Balance Recalculation** – this phase recalculates the Account Balances from the G/L Detail Postings.

When the consolidation process is completed, the user will be brought back to the menu.

Based on the number of companies to consolidate, and the amount of GL data in each company, it is possible that the consolidation may take a long time to execute. Specifically, **Phase 3** and the **Account Balance Recalculation Phase** may take an extended amount of time. Due to this possibility, there is a **Delayed Execution** feature.

Delaying the Consolidation Process

Instead of selecting the **Proceed Button**, select the **Delayed Button** to delay the consolidation process.

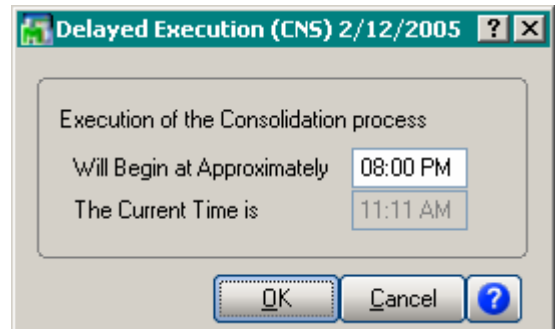
On this panel, select the time of day to execute the consolidation process, using military time. If you want to run the consolidation at 8:00PM, then enter in 20:00. The program will then convert that time entered into 8:00PM.

Select the OK Button to trigger the timer.

Select the Cancel Button to exit the Delayed Execution.

If you want to delay the execution of the consolidation process, you must leave the Delayed Execution panel open in MAS90, which means that you must leave MAS90 open.

When the consolidation process is completed, the user will be brought back to the menu.



SECTION D: Technical Overview

How does the Consolidation Program work?

The following is a behind-the-scenes look at the consolidation process. As mentioned in **Section C: System Operations**, there are 5 steps to the process. Here is a more detailed explanation of what happens:

Backup / Clear Phase

In this phase, certain files are backed up and then erased. Here are those files:

GL_AccountGroup.M4T

GL_AccountCategory.M4T

GL_SubAccount.M4T

GL_MainAccount.M4T

GL_FiscalYear.M4T

GL_FiscalYearDetail.M4T

GL_Account.M4T

GL_AccountHistory.M4T

GL_AccountSegment.M4T

GL_DetailPosting.M4T

GL_PeriodPostingHistory.M4T

GL_Budget.M4T

GL_BudgetOptions.M4T

GL_BudgetRevision.M4T

GL_BudgetRevisionOptions.M4T

GL_PeriodBudgetDetail.M4T

In the backup portion of this phase, the .M4T file is backed up to .OLD. If a .OLD already exists, then the .OLD is backed up to .OL1. Therefore, you may have 2 backups of each file that is to be cleared.

The purpose of the backup process is to protect the user if they accidentally run the Consolidation Utility on a non-Consolidation, or “live”, Company Code.

Phase 1 – Setup file Consolidation

In this phase, the following setup files are consolidated for the companies entered:

GL_AccountGroup.M4T

GL_AccountCategory.M4T

GL_SubAccount.M4T

GL_MainAccount.M4T

GL_FiscalYear.M4T

GL_FiscalYearDetail.M4T

GL_Budget.M4T

GL_BudgetOptions.M4T

GL_BudgetRevisionOptions.M4T

Phase 2 – Account Consolidation

In this phase, the following setup files are consolidated for the companies entered:

GL_Account.M4T

GL_AccountHistory.M4T

Phase 3 – G/L Detail Posting Consolidation

In this phase, the following setup files are consolidated for the companies entered:

GL_DetailPosting.M4T

Note: All GL Detail for all Years are consolidated, unless a specific date range is entered.

Phase 4 – G/L Budget Consolidation

In this phase, the following setup files are consolidated for the companies entered:

GL_BudgetRevision.M4T

GL_PeriodBudgetDetail.M4T

Account Balance Recalculation

In this phase, the following the **Recalculate Account Balances** is executed. This is the same **Recalculate Account Balances** utility that is on the G/L Utilities menu.

What General Ledger Reports may I run?

The consolidation process combines both Summary and Detail postings for each company, so many of the G/L Reports may be run for the Consolidation Company, such as:

1. Chart of Accounts
2. General Ledger Worksheets
3. General Ledger Trial Balance
4. Financial Reports
5. General Ledger Detail Report
6. General Ledger Detail by Source Report
7. Exception Report
8. General Ledger Graphics
9. General Ledger Analysis
10. Budget and History Report
11. Budget and History Report by Period

What General Ledger Data is NOT included?

The consolidation process does not combine Budgets, Source Journals, Account Memos, Main Account Memos, or Source Journal History, so you may not print these reports:

1. Reprint Journals
2. Source Journal History Report
3. Budget and History Report
4. Budget and History Report by Period
5. Account Audit Report
6. Account Memo Printing
7. Main Account Memo Printing

Can I do normal processing in the Consolidation Company?

Yes, once the consolidation process is completed, you may add, change, or delete GL Accounts, and do General Journal or Transaction Journal Entries. Just remember though, that if you do normal processing and then re-consolidate using the same consolidation company code, then that processing will be lost, **unless** you use the date range, and set the **Erase Existing Detail** to "unchecked".

SECTION E: What's New?

Version 4.00

The GLCN enhancement was completely re-written for version 4.00, based on the overhaul of the General Ledger module. The new 4.00 version has additional features:

1. A Delayed Execution setting has been added.
2. More files are consolidated, the most important being the G/L Detail Posting file, which now allows the user to print G/L Detail Reports for the Consolidation Company.

Version 4.05 – 11/7/05

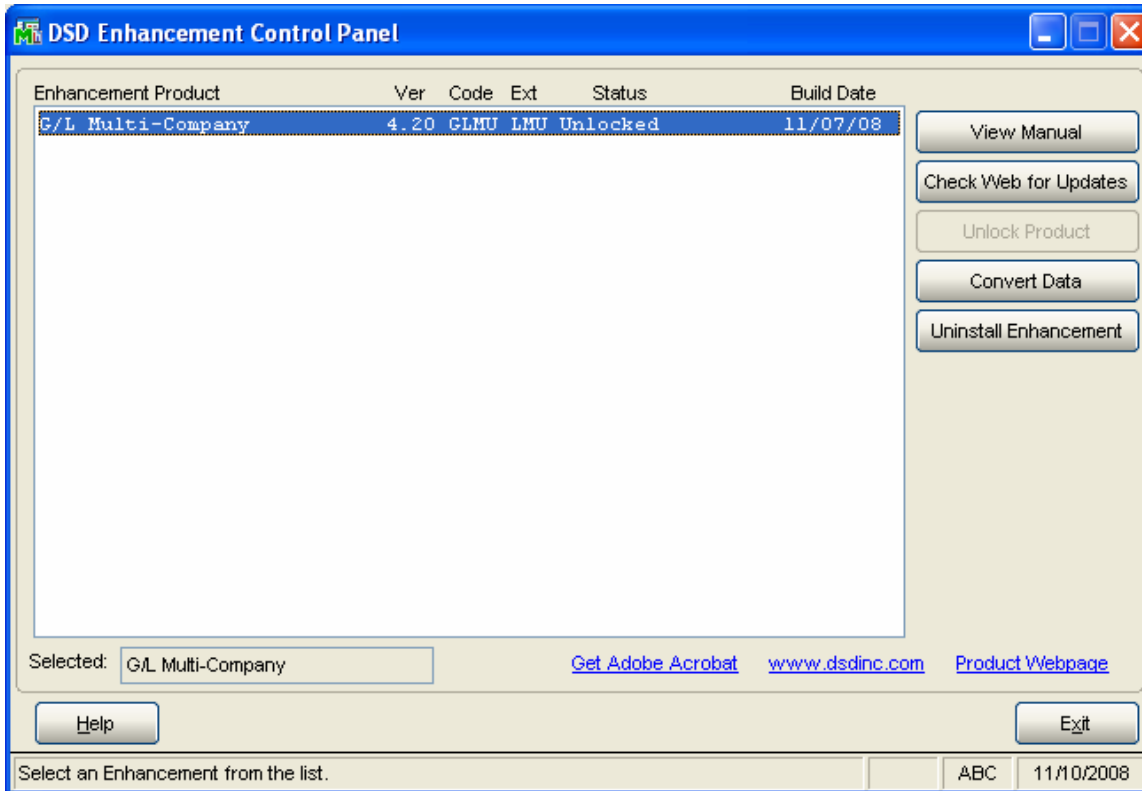
Budget Consolidation and Detail Date Range has been added as new features.

Version 4.10

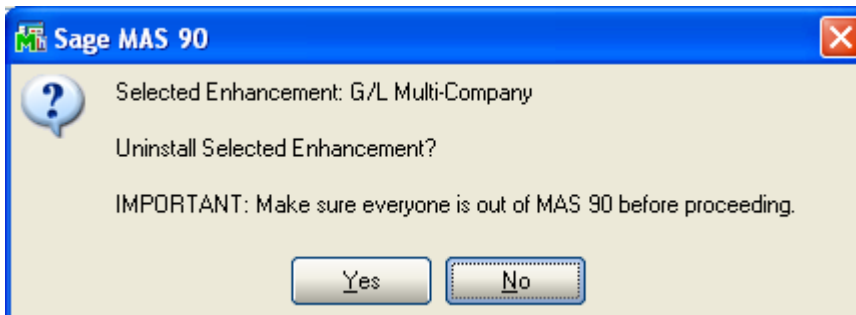
The Consolidation Listing has been converted to Crystal 10.0.

Section F: Uninstall DSD Enhancements

A DSD Enhancements Uninstall Utility has been provided for the purposes of removing DSD Enhancements from your MAS 90/200 System. This utility may be accessed from the **DSD Enhancement Control Panel** menu option on the **Library Master / Utilities** menu.

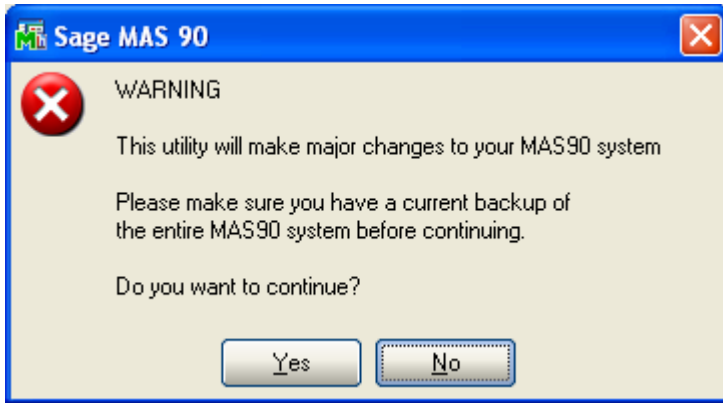


When accessing the **DSD Utility Suite**, select the enhancement that you wish to Uninstall, and then select the **Uninstall Enhancement** button. The following message box will appear:



Select **No** to exit the Uninstall Process.
 Select **Yes** to continue with the Uninstall Process.

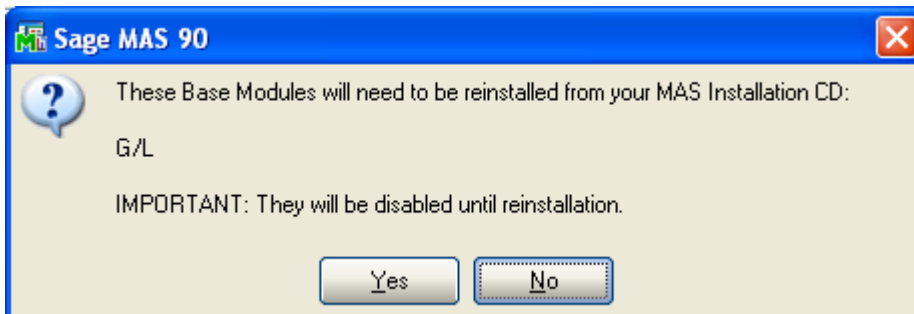
The following message box will appear, to remind you that a complete backup of your entire MAS90 system should be completed prior to uninstalling a DSD product.



Select **No** to exit the Uninstall Process.
Select **Yes** to continue with the Uninstall Process.

After the Uninstall of the DSD Enhancement, you MUST reinstall certain standard MAS 90/200 modules, followed by reinstallation of MAS Service Packs / Updates, if applicable.

The following message box will appear, and will display which of those specific MAS 90/200 modules you must reinstall afterwards.

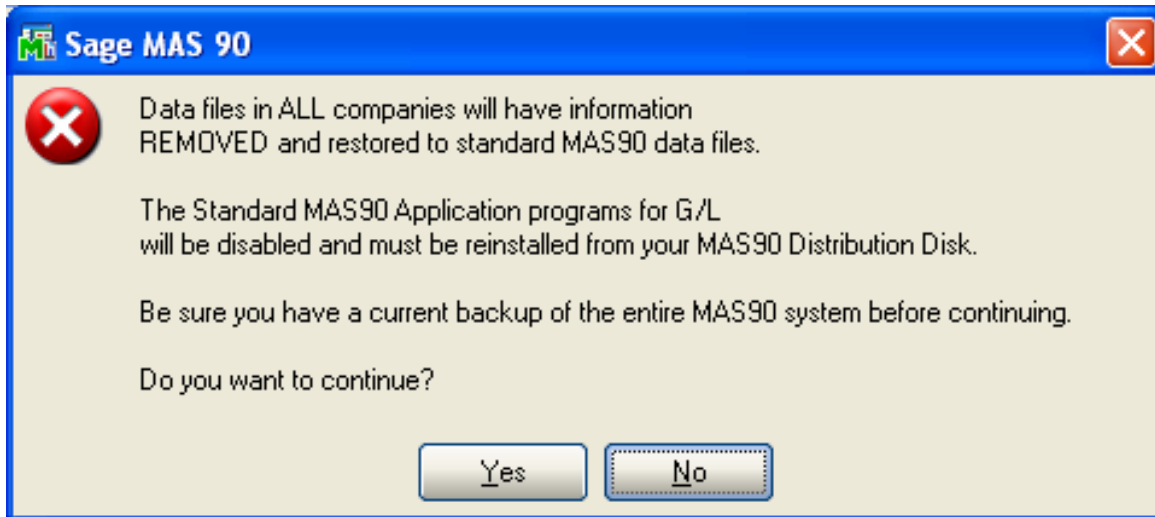


Select **No** to exit the Uninstall Process.
Select **Yes** to continue with the Uninstall Process.

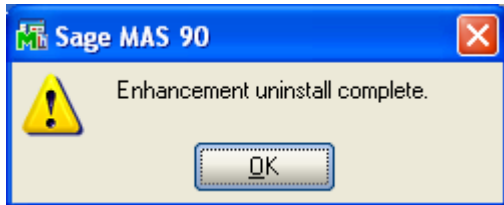
The following message box will appear, displaying the final warning message.

Select **No** to exit the Uninstall Process.

Select **Yes** to continue with the Uninstall Process. At this point, the DSD Enhancement will be removed from the MAS 90/200 system.



After completion of the Uninstall, the following message box will appear. Select OK to continue.



Now that the Uninstall process is completed, you must:

- Reinstall the applicable standard MAS 90/200 modules
- Reinstall the latest MAS 90/200 Service Pack/Updates, if applicable.
- Reinstall any other DSD Enhancements or Developer products that are affected from the reinstallation of the standard MAS 90/200 module(s).

License Agreement

IMPORTANT: THIS SOFTWARE IS LICENSED BY DSD BUSINESS SYSTEMS, INC. TO CUSTOMERS FOR THEIR USE ONLY IN ACCORDANCE WITH THE TERMS SET FORTH IN THIS CUSTOMER LICENSE AGREEMENT. OPENING OR USING THIS PACKAGE CONSTITUTES ACCEPTANCE OF THESE TERMS. IF THE TERMS OF THIS LICENSE ARE NOT ACCEPTABLE, THE CUSTOMER MAY OBTAIN A FULL REFUND OF ANY MONEY PAID IF THIS UNUSED, UNOPENED PACKAGE IS RETURNED WITHIN TEN (10) DAYS TO THE DEALER FROM WHICH IT WAS ACQUIRED.

1. **LICENSE. DSD BUSINESS SYSTEMS, INC.,** a California corporation as Licensor and owner hereby agrees to grant you as Licensee a non-exclusive license to use the enclosed software subject to the terms and restrictions set forth in this License Agreement. Title in and ownership of all programs and program enhancements or modifications written by DSD Business Systems, Inc. shall remain at all times vested in DSD Business Systems, Inc. The right granted by this Customer License Agreement and your payment of the non-refundable License fee is the right to use the Program in accordance with the terms of this Customer License Agreement. Delivery of a copy of the Program to you is made solely to enable you to exercise this right.
2. **COPYRIGHT.** This Program is copyrighted and all rights are reserved by DSD BUSINESS SYSTEMS, INC. and SAGE, INC. You may not copy or reproduce any part of the Program except to copy the Program for backup purposes. If you make a backup copy you must reproduce and include the copyright notice on it. The distribution of the product is intended for the use of the original Licensee only and for use only on the computer systems specified. Lawful users of this Program are hereby licensed only to read the Program from its medium into the memory of a computer only for the purpose of executing the program.

The documentation is also copyrighted and all rights are reserved. This document may not, in whole or in part, be copied, photocopied, reproduced, translated, transmitted or reduced to any electronic medium of machine readable form without prior consent, in writing, from DSD BUSINESS SYSTEMS, INC.

The Licensee recognizes that DSD BUSINESS SYSTEMS, INC. has expended considerable time, effort and money to develop the licensed Software and Manual and that DSD BUSINESS SYSTEMS, INC. will be substantially damaged by its unauthorized use, sale or distribution. In addition to recovery of all damages and the obtaining of injunctive relief as provided by law, in the event legal action must be taken to enforce this provision, the Licensee will pay DSD BUSINESS SYSTEMS, INC. all reasonable legal fees incurred in enforcing the rights of DSD BUSINESS SYSTEMS, INC. under this provision.

3. **RESTRICTIONS ON USE AND TRANSFER.** The original and any backup copies of the Program and its documentation are to be used only in connection with a single computer or network fileserver. You may physically transfer the Program from one computer to another, provided that the Program is used in connection with only one computer or network fileserver at a time. You may not distribute copies of the Program Documentation to others. The Program is to be used exclusively for business purposes and not for personal, family or household use. YOU MAY NOT USE, COPY, MODIFY, OR TRANSFER THE PROGRAM, IN WHOLE OR IN PART, EXCEPT AS EXPRESSLY PROVIDED FOR IN THIS LICENSE AGREEMENT. IN ADDITION YOU MAY NOT MODIFY, ADAPT, TRANSLATE, REVERSE ENGINEER, DECOMPILE, DISASSEMBLE THE PROGRAM, OR CREATE ANY DERIVATIVE WORK BASED UPON THE PROGRAM.
4. **WARRANTY.** DSD BUSINESS SYSTEMS, INC. software is licensed "as is" with no warranties of any kind, either expressed or implied, other than the following: DSD BUSINESS SYSTEMS will repair any bugs or flaws found in the software. Flaws of a critical nature which affect the basic functionality of the software will be repaired on an "emergency" basis, with a corrected distribution diskette sent via UPS Blue or equal. Flaws of a non-critical or cosmetic nature will be repaired on a timely basis, and a corrected distribution diskette sent via UPS ground or regular mail. All incidental or consequential damages that result from any defect in the software, even if DSD Business Systems, Inc. has been advised of the possibility of such damages will be assumed by you.

5. **LIMITED WARRANTY FOR DISKETTES.** To the original licensee only, DSD BUSINESS SYSTEMS, INC. warrants the magnetic diskette on which the Program is recorded to be free from defects in materials and faulty workmanship under normal use and service for a period of ninety days from the date the Program is delivered. Any implied warranties of merchantability and fitness for a particular purpose are limited in duration to the period of ninety (90) days from the date of delivery. If, during this 90 day period, a defect in the diskette should occur, the diskette may be returned DSD BUSINESS SYSTEMS, INC., 5120 Shoreham Place, Suite 280, San Diego, California, 92122, or to any authorized DSD BUSINESS SYSTEMS, INC. Dealer, and the diskette will be replaced without charge to you, provided that you have previously returned the Warranty Registration Card along with a copy of your sales receipt for the Program.
6. **NO OTHER WARRANTIES.** No dealer or distributor of DSD BUSINESS SYSTEMS, INC. products or any agent of DSD BUSINESS SYSTEMS, INC. is authorized to make any representation of warranty with respect to the Program except those expressly stated in the Customer License Agreement.
7. **LIMITATION OF LIABILITY.** Neither DSD BUSINESS SYSTEMS, INC. nor anyone else who has been involved in the creation, production or delivery of this program shall be liable for any direct, incidental or consequential damages.
8. **TERM.** This license is effective until terminated. You may terminate it at any time by returning the Program and Documentation together with all copies, modifications and merged portions in any form to DSD BUSINESS SYSTEMS, INC. The license will also be terminated by DSD BUSINESS SYSTEMS, INC. immediately and without notice if you fail to comply with any term or condition of this License Agreement.
9. **ACKNOWLEDGMENT.** Your opening this package, use of this program or signature on the warranty registration card acknowledges that you have read this customer license agreement and agree to its terms. You further agree that the license agreement is the complete and exclusive statement of the agreement between yourself and DSD BUSINESS SYSTEMS, INC. and supersedes any proposal or prior agreement, oral or written, and any other communications between yourself and DSD BUSINESS SYSTEMS, INC or dealers and distributors of DSD BUSINESS SYSTEMS, INC products relating to the subject matter of this agreement.
10. **ASSIGNMENT.** You may not sublicense this license or the Program. You may not rent this Program or the use of the Program. You may not transfer this copy of the Program unless the recipient agrees in writing (and a copy of such acceptance is sent to DSD BUSINESS SYSTEMS, INC., 5120 Shoreham Place, Suite 280, San Diego, California, 92122) to accept all of the terms of this Customer License Agreement. Any attempt by you to otherwise rent, sublicense, assign or transfer any of the rights, duties or obligation hereunder is void and may be the cause for immediate termination of the license. DSD BUSINESS SYSTEMS, INC. may assign any of its rights and obligation under this agreement to any party without notice to you.

Fax Transmittal Form

To:	<i>DSD Business Systems Customer Service</i>		Fax:	<i>858/550-4900</i>
From:	Name:		Phone:	
	Company:		Fax:	
Date:	/ /	# Pgs Including this Page:		
Subject:	Check One: <input type="checkbox"/> Product Problem <input type="checkbox"/> Suggestions			
Product:	<i>GLCN G/L Multi-Company Financial</i>		Version:	<i>4.30</i>

This page may be copied