



**DSD**  
BUSINESS SYSTEMS

# **DSD Business Systems**

MAS 90 Enhancements

APMU

Accounts Payable Multi-Company

Version 4.30



Information in this document is subject to change without notice.

Copyright 1993-2008, DSD Business Systems All rights reserved.

Accounts Payable Multi-Company User's Manual  
Version 4.30

28 August, 2009

DSD Business Systems  
5120 Shoreham Place  
Suite 280  
San Diego, CA 92122  
858/550-5900 8:00am to 5:00pm PST  
858/550-4900 Fax

### Trademarks

**ProvideX<sup>®</sup>** is a Trademark of Sage Software.

**Windows** is a trademark of Microsoft Corporation.

**MAS 90<sup>®</sup>** is a registered trademark of Sage Software.

**PXPlus<sup>®</sup>** is a registered trademark of PVX Plus technologies

All other product names and brand names are service marks, and/or trademarks or registered trademarks of their respective companies.

This documentation and the software described herein, is prepared and published under license. Sage Software has not tested or verified either the software or any representation in this documentation regarding the software. Sage Software does not make any warranty with respect to either this documentation or the software described herein, and specifically disclaims any warranty, express or implied, with respect hereto, including the warranties of fitness for a particular purpose and merchantability.

## Table of Contents

---

<b>SECTION A: INTRODUCTION</b>	<b>5</b>
WEB RESOURCES .....	5
SUPPORT .....	5
ACCOUNTS PAYABLE MULTI-COMPANY FEATURES .....	6
LIMITATIONS .....	7
REPORTS .....	7
<b>SECTION B: GETTING STARTED</b>	<b>8</b>
REQUIRED LEVELS .....	8
INSTALLATION .....	8
DSD ENHANCEMENT CONTROL PANEL .....	9
<b>SECTION C: SETUP</b>	<b>11</b>
APMU OPTIONS .....	11
INTER-COMPANY ACCOUNT MAINTENANCE .....	12
<b>SECTION D: SYSTEM OPERATIONS</b>	<b>13</b>
A/P INVOICE DATA ENTRY .....	13
A/P MANUAL CHECK ENTRY .....	15
A/P REPETITIVE INVOICE ENTRY .....	16
SYSTEM DATE CONSIDERATIONS.....	16
A/P TRIAL BALANCE REPORT.....	17
A/P EXPENSE BY G/L ACCOUNT REPORT .....	18
INVOICE HISTORY REPORT.....	18
DAILY TRANSACTION REGISTERS.....	19
USING COMPANY COPY WITH APMU .....	20
<b>SECTION E: WHAT'S NEW?</b>	<b>21</b>
VERSION 3.61 .....	21
VERSION 3.70 .....	21
VERSION 3.71 .....	21
VERSION 3.71 - 08/01/2003.....	21
VERSION 3.71 - 01/29/2004.....	21
VERSION 3.71 - REVISION 05/28/2004.....	22
VERSION 4.00 .....	22
VERSION 4.05 .....	22
VERSION 4.10 .....	22
VERSION 4.20 .....	22
VERSION 4.30 .....	22

<b>SECTION F: UNINSTALL DSD ENHANCEMENTS</b>	<b>23</b>
<b>LICENSE AGREEMENT</b>	<b>26</b>
<b>FAX TRANSMITTAL FORM</b>	<b>28</b>

## Section A: Introduction

---

This manual contains a description and instructions for this DSD product. Operating instructions are included for the features added by this product to MAS 90. For instructions on using MAS 90, refer to the appropriate MAS 90 manual, or call your MAS 90 reseller. DSD Business Systems offers excellent MAS 90 support, at an hourly rate.

### Web Resources

DSD web site: <http://www.dsdinc.com>

The Enhancement page contains:

- Current Release Schedule*
- Purchasing Information*
- Installation Instructions*
- Product Support*
- Enhancement Links*

APMU Accounts Payable Multi-Company: <http://www.dsdinc.com/enh/pages/APMU.htm>

The product web page contains:

- Product Description*
- Adobe Acrobat Product Description*
- Web Links*
- Current Product Version Table*
- Product Installation File Download*
- Product Manual in Word 97 and Adobe Acrobat Formats*
- Revision History*
- FAQ*

### Support

DSD provides product support through MAS 90 resellers. Support is provided for the current version. Older versions are supported at an hourly rate. DSD's telephone number is **858-550-5900**. Fax: **858-550-4900**.

For a hard error, where the program displays an error dialog, report:

- Error number.*
- Program name.*
- Line number.*

*Program version.*

*Exact sequence that caused the error, including menus and menu selections.*

*Other pertinent information.*

If leaving a message or faxing, please include:

*Your name.*

*Your phone number (and fax if applicable) and extension.*

It is possible to be unable to duplicate a problem, because of data corruption or because we have not exactly duplicated a particular operating environment. In such circumstances, we can only continue to try to fix the problem if we can either access the system with Symantec PCAnywhere or by some other means access or duplicate the system.

## Accounts Payable Multi-Company Features

**APMU** has been designed to allow a managing company's Accounts Payable Department to process A/P transactions for an unlimited number of "subsidiary" companies.

Invoices may be distributed to other companies that have a MAS 90 General Ledger database. Each line item entry of an Invoice contains a new Company Code field. This new field defaults to the Current Company. It may be changed to any other company that has been setup for Inter-company processing.

When an Inter-company Distribution is made, the Open Invoice is entered into the Current Company's Aging. A General Ledger transaction is written to the other company's Daily Transaction File, containing a debit to that other company's expense account, and a credit to the predefined Inter-company Allocation account. A pair of Inter-company Allocation Accounts must be set up for each company, which has been setup for Inter-company processing.

During line entry for an Inter-company Allocation, the General Ledger Account Format, and the <F2> List Mode feature reflects the Chart of Accounts and the number format for the other company.

Inter-company Allocations are also available in Repetitive Invoice Line Entry.

**Allow System Date Override in Invoice Data Entry:** When this option is selected (checked), a new System Date header field then appears in Invoice Data Entry. This date can then be set to more accurately and efficiently post Invoice activity to the General Ledger. Normally, all Invoices in a batch are posted to the General Ledger with the same Transaction Date (System Date), regardless of the Invoice Date. If the System Date Override option is activated, the User can specify a unique System Date for each Invoice. This new date will act as the Posting Date for General Ledger Purposes. This feature is not available in Manual Check Entry, because the Check Date serves this same purpose.

## Limitations

1. APMU will **not** work for "Parent" companies that have T/B integrated.

2. APMU will work with parent companies that have “Subsidiaries” that have T/B or J/C.
3. Inter-company allocations are not allowed for Time and Billing entries.
4. You cannot use SUDATA to “rename” a company code. You must continue to use the companies that are initially set-up.
5. APMU will not allow Credit Card Vendors to Transfer amounts to subsidiary companies. The Transfer button will be disabled in Invoice Data Entry and Manual Check Data Entry if the company is not the Parent Company.

## Reports

APMU changes these reports:

- ◆ **Inter-company Account Listing:** This new report is available through the **Inter-company Account Maintenance Screen**, and lists each of the companies setup for Inter-company Allocations, and the two G/L allocation accounts for each.
- ◆ **Invoice Register:** This existing report has been modified to include the System Date for each Invoice, and the Company Code for each line item.
- ◆ **Invoice Register Posting Recap:** This existing report has been modified to include G/L Inter-company postings, and to sort and subtotal those transactions by Company Code.
- ◆ **Manual Check Register:** This existing report has been modified to include the Company Code for each line item.
- ◆ **Manual Check Posting Recap:** This existing report has been modified to include G/L Inter-company postings, and to sort and subtotal those transactions by Company Code.
- ◆ **Check Printing and Extended Stub Report:** This existing form printing has been modified to include the Company Code for each line item, if you choose to print G/L Distribution.
- ◆ **Check Register:** This existing report has been modified to include the Company Code for each line item, if you choose to print G/L Distribution in A/P Options.
- ◆ **A/P Expense by G/L Account Report:** This new report sorts and prints invoices by G/L Expense Account. The Company Code has been added to the Selection Panel.
- ◆ **A/P Invoice History Report:** This existing report has been modified to include the Company Code for each General Ledger distribution.
- ◆ **A/P Trial Balance Report:** The Company Code has been added to line detail, if **Print G/L Distribution** is selected. A drop box has been added to select a G/L Segment Code. The Company Code and Segment have been added to the Selection Ranges. If a Company and/or Segment range is chosen, all printed amounts associated with the Open Invoice will reflect what percentage of the total they represent.

## SECTION B: Getting Started

### CAUTION

- **If you reinstall or upgrade one of the MAS 90 modules listed in the following table, you must also reinstall this Enhancement.**
- Enhancements from different Master Developers are generally not designed to work together. If installed together, problems are likely to occur.
- **Check with DSD before installing more than one Enhancement.**
- **Do not install this Enhancement on MAS SQL Systems.**

### Required Levels

MAS 90 Module	Module Required	Required Level
A/P	Y	4.30
P/O	N	4.30

### Installation

The following instructions are for installing to Windows. For UNIX instructions see the "INSTALL.HTM" HTML file on the CD-ROM (you can use a Windows machine to view it.) It will guide you in mounting the CD-ROM on the UNIX file system and running a UNIX installation script.

1. **Back-up:** Exit all MAS 90 / MAS 200 sessions. Back-up existing MAS 90 / MAS 200 data.
2. **Check Levels:** MAS 90 / MAS 200 module levels **must match** those listed above.
3. **Run Enhancement Setup Program:** Save the executable installation program (sent to you or downloaded from our website) in a convenient location on the MAS90/200 server. Launch the program from Windows Explorer or by selecting Start/Run, then browse for the file in the location you saved it. Follow on-screen instructions.
4. **Re-Start MAS 90 / MAS 200:** MAS 90 / MAS 200 will be updated.
5. **Unlock the Enhancement:** DSD Enhancements must be unlocked to run. When any part of the Enhancement is run for the first time, the **DSD Enhancement License Agreement and Activation** window will appear. Follow the steps shown on that window. *You can click the Help button for more detailed instructions.*

**Note:** On the next page is a screenshot of the DSD Enhancement License Agreement and Activation window.

After accepting the License Agreement, you can then select the type of unlocking that you'd prefer. The choices are Normal, Demo and Web.

**Normal Unlock:** You will need to unlock the Enhancement by calling DSD during business hours (8am to 5pm PST) at **858-550-5900**.

**Web Unlock:** If the system that is running the DSD Enhancement *has web access* and you have a DSD WebUnlock code, you can unlock the Enhancement without assistance using WebUnlock. When this option is selected, the window will change to show the WebUnlock entry section. Enter the WebUnlock code and click the Unlock button.

- Entering a WebUnlock code will unlock all DSD Enhancements that have been licensed.
- The MAS 90 / MAS 200 system that is being used must have web access for this option to be available.
- You can get a WebUnlock Code from your DSD Enhancements sales representative.

**Demo Unlock:** If a Demo mode is available for the Enhancement you're running, you will be able to Demo unlock the product without assistance from DSD for demo purposes.

- Creating a Demo Unlock is a good way to temporarily unlock DSD Enhancements off-hours, if you do not have web access and/or a WebUnlock code. Later, you can unlock the product fully, during business hours.

**Note:** You can also unlock a DSD Enhancement through the **DSD Enhancement Control Panel** found on the Library Master Utilities Menu. Then, select the Enhancement with your mouse from the list of Enhancements and click the **Unlock Product** button on the right side of the window.

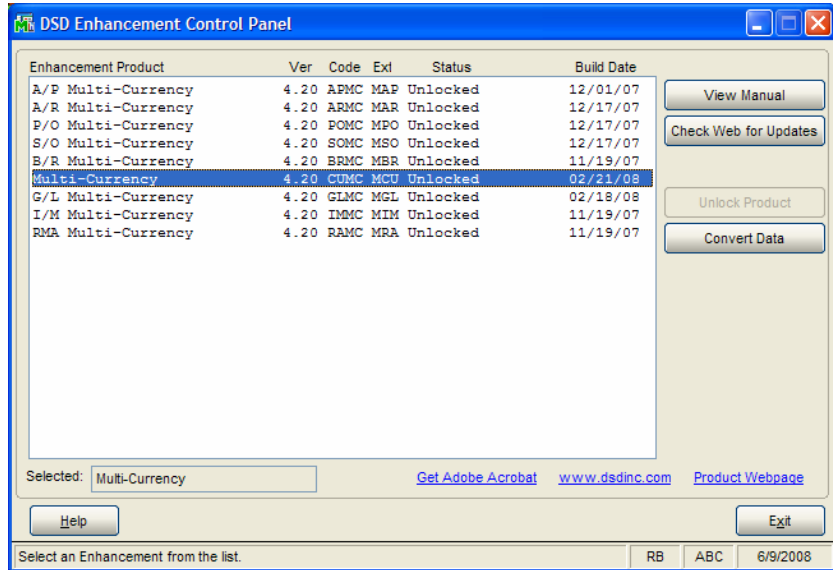
6. **Convert Data:** After registration, the Data Conversion window will appear. Follow on-screen instructions to complete data conversion. You can exit the conversion program without converting data. The Enhancement will not proceed, however, until data is converted. If you enter an enhanced program and data has not been converted, the conversion program will run again.

## DSD Enhancement Control Panel

Starting with version 3.61, all DSD Enhancement products include DSD's Enhancement Control Panel. The **DSD Enhancement Control Panel** is accessed from the **Library Master Utilities** menu.

The DSD Enhancement Control Panel is a simple to use yet powerful system to help maintain DSD Enhancements installed on a MAS 90 / MAS 200 system. To use it, select an Enhancement product from the list on the window and then click the button, on the right side of the window, which corresponds with the desired task.

**View Manual:** This button will display the product manual for the selected Enhancement using Adobe Acrobat. For this to be possible, the PDF file for the corresponding manual must be in the “MAS90/PDF” folder in the MAS 90 system. If the file is not present, and the system has web access, the correct PDF file will be automatically downloaded from the DSD website, put into the “MAS90/PDF” folder and then displayed.



**Check the Web for Updates:** This button will check the DSD website to see what the current build is the selected Enhancement and alert the user if a later version is available. *This requires an ftp web connection on the MAS 90 / MAS 200 system.*

**Unlock Product:** This will cause the DSD Enhancement License Agreement and Activation window to appear. Using this window is described on the previous page. *This button is disabled if the selected Enhancement is already unlocked.*

**Convert Data:** After verification, the selected Enhancements data conversion program will run. Data conversion is non-destructive, and may be triggered any number of times. Sometimes this is required to fix data records imported or updated from a non-enhancement installation.

**Help:** The Help button, located at the bottom left of the window, opens an HTML help file .

**Get Adobe Acrobat:** Opens the Adobe Acrobat website to the page where Acrobat can be downloaded and installed.

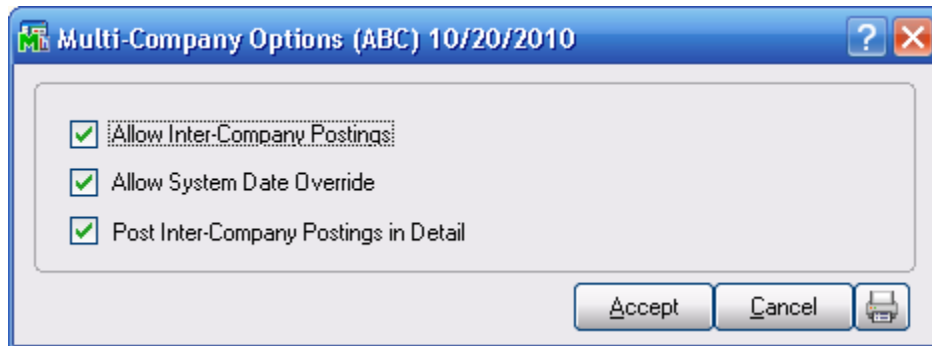
There are also links to the DSD website and the Enhancement page on that site.

## Section C: Setup

### APMU Options

Starting with version 4.30, **Multi-Company** options have been removed from the Accounts Payable Options screen and added as a menu item on the Accounts Payable Setup menu.

Select this menu item to pop-up the **Multi-Company Options** panel.



**Allow Inter-company Postings:** Selecting this option causes the new **Company Code** field to appear on each line item of **Repetitive Invoice**, **Invoice** and **Manual Check Entry**. To process Inter-company Payables, each company must be setup in the new **Inter-company Maintenance Screen**, which is described in this section.

**Note:** This feature is not available if **Accounts Payable** has been integrated with **Time and Billing**. If **Job Cost** is integrated, then **Inter-Company transaction in Manual Check Entry** is disabled.

**Allow System Date Override:** When this option is selected (checked), a new System Date header field then appears in Invoice Data Entry. This date can then be set to more accurately and efficiently post Invoice activity to the General Ledger. Normally, all Invoices in a batch are posted to the General Ledger with the same Transaction Date (System Date), regardless of the Invoice Date. If the System Date Override option is activated, the User can specify a unique System Date for each Invoice. This new date will act as the Posting Date for General Ledger Purposes. This feature is not available in Manual Check Entry, because the Check Date serves this same purpose.

**Note:** This feature is not available if the **Accounts Payable** module has been integrated with **Time and Billing** or **Job Costing**.

**Post Inter-Company Postings in Detail:** Selecting this option posts inter-company postings to the General Ledger in Detail. Clearing this option posts inter-company postings to the General Ledger in Summary.

## Inter-company Account Maintenance

The **Inter-company Account Maintenance** window has been created to allow the various companies on the system to be accessed during Invoice and Manual Check Line Entry. These companies need not have Accounts Payable databases setup **if they do not have divisions or use discounts**, but each must have a General Ledger and Chart of Accounts.

For each company activated, the User must define a **G/L Debit Account** and a **G/L Credit Account**. The debit account is normally a Current Assets account, and it can be thought of as a "Due From" account. When an Invoice is entered into the **ABC Company**, which is to be expensed to the **ABX Company**, the invoice amount

A/P Intercompany Account Maintenance (ABC) 10/20/2010

Company Code: ABX

American Business Expressions

ABC	Company G/L Debit Acct	111-00-00	Due From Subsidiary
ABX	Company G/L Credit Acct	20100-04-000-000-000	Due to Corporate

Buttons: Accept, Cancel, Delete, Print

will be entered as a credit to the **ABC Company's** Accounts Payable, and this account (the "Due From" account) will be debited with the full amount. It is quite common for the **ABX Company** to write a check, reimbursing the **ABC Company** for the balance in this G/L Account.

When an Inter-company line is posted, the expense account entered in Invoice entry, for the other company, is debited, and the **G/L Credit Account** is credited. This account is normally a **Current Liability Account**, and can be thought of as a "Due To" account (to the company into which the Invoices were entered).

## Section D: System Operations

### A/P Invoice Data Entry

If Inter-company processing has been selected and the **Allow System Date Override** option has been checked in **APMU** options, a new “System Date” header field will be available in Invoice Data Entry. This date can then be set to more accurately and efficiently post Invoice activity to the General Ledger. Normally, all Invoices in a batch are posted to the General Ledger with the same Transaction Date (System Date), regardless of the Invoice Date. If the System Date Override option is activated, the User can specify a unique System Date for each Invoice. This new date will act as the Posting Date for General Ledger Purposes.

If Inter-company processing has been selected, a new **Company** field will appear just before the G/L Account on the Lines panel. This field will at first default to the current company, and if overridden, to the Company Code most recently entered.

**Note:** If you select a “Subsidiary” company, the Transfer function is disabled.

	Company	G/L Account	Amount	Comment
1	ABC	555-00-03	100.00	Rental payment
2	EEC	540-00-00	300.00	Rental payment
3	XYZ	555-000-300	250.00	Rent
4	XYZ		.00	

Description:

Distribution Balance: 0.00      Total: 650.00

A sample Invoice Register is shown on below. Note that it contains the new System Date field for each Invoice, and the new Company Code field for each line item.

Accounts Payable Invoice Register				ABC Distribution and Service Corp. (ABC)		
Journal Posting Date: 10/15/2010						
Register Number: AP-000015						
Division Number: 01 TRADE ACCOUNTS PAYABLE						
Vendor Number	Invoice	Date	Discount	Invoice Amount	Discount	Distribution Amount
AIRWAY 10201001	Airway Property	10/20/2010		650.00		
		10/30/2010			0.00	
System Date: 10/15/2010						
ABC	G/L Account	555-00-03		Rent		100.00
				Comment: Rental payment		
EEC	G/L Account	540-00-00		Rent		300.00
				Comment: Rental payment		
XYZ	G/L Account	555-000-300		Rent		250.00
				Comment: Rent		
<b>Division 01 Total</b>				650.00	0.00	650.00
<b>Report Total</b>				650.00	0.00	650.00
					Prepaid Amount: 0.00	650.00
					Prepaid Amount: 0.00	650.00

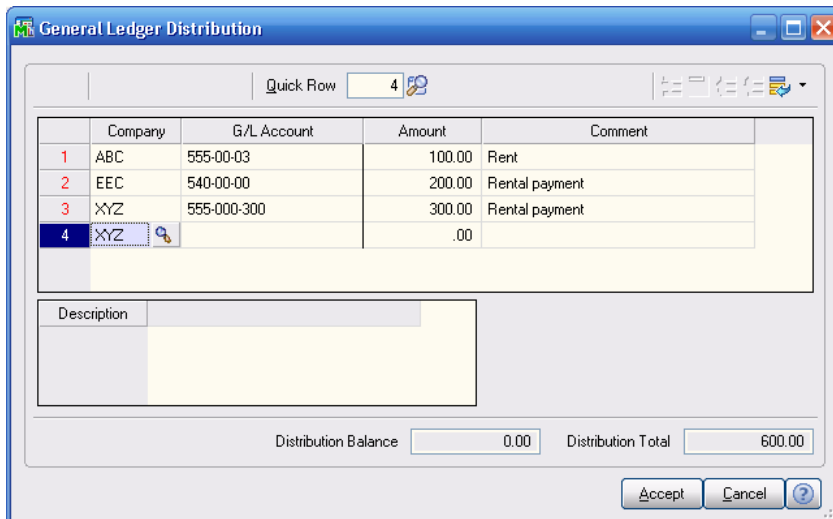
When the Invoice register is finished, the A/P Posting Recap is run automatically. If Inter-company processing is not being used, then this report will be sorted and subtotaled by Division, as before. If Inter-company processing has been selected, then this report will sort and subtotal by Company Code, as shown below:

Accounts Payable Invoice Register - Recap By Division				ABC Distribution and Service Corp. (ABC)	
Journal Posting Date: 10/15/2010					
Register Number: AP-000015					
<b>ABC</b>					
Division Number: 01 TRADE ACCOUNTS PAYABLE					
G/L Account	Description	Debit	Credit		
111-00-00	Due From Subsidiary	550.00			
200-01-00	Accounts payable - trade		650.00		
555-00-03	Rent				
<b>Division 01 Total:</b>		650.00	650.00		
<b>EEC</b>					
Division Number: 01 TRADE ACCOUNTS PAYABLE					
G/L Account	Description	Debit	Credit		
204-00-00	Due to ABC Corporate Offices		300.00		
540-00-00	Rent	300.00			
<b>Division 01 Total:</b>		300.00	300.00		
<b>XYZ</b>					
Division Number: 01 TRADE ACCOUNTS PAYABLE					
G/L Account	Description	Debit	Credit		
200-020-000	Due to ABC Corporate		250.00		
555-000-300	Rent	250.00			
<b>Division 01 Total:</b>		250.00	250.00		

**A/P Manual Check Entry**

In **Manual Check Entry**, the G/L Distributions window has been modified with a **Company** column in the lines panel and a **Company** entry field. This field will at first default to the current company, and if overridden, to the Company Code most recently entered. This column and field will appear if **Allow Inter-Company Postings** has been checked in the **APMU** options.

**Note:** If you select a “Subsidiary” company, the Transfer function is disabled.



The Manual Check Register and Recaps have been modified in a manner similar to the Invoice register and Recaps. The Manual Check Register and Recap are shown below.

**Manual Check Register**  
Journal Posting Date: 10/20/2010  
Register Number: MC-000003

**ABC Distribution and Service Corp. (ABC)**

Check Number	Check Date	Vendor Number	Invoice Amount	Discount	Distribution Amount	Check Amount
000001	11/1/2007	01-AIRWAY	Airway Property			600.00
<b>Check Comment:</b> Rental payments						
10201005	11/1/2007		600.00	0.00		
<b>ABC</b>	<b>G/L Account:</b> 555-00-03		Rent		100.00	
<b>EEC</b>	<b>G/L Account:</b> 540-00-00		Rent		200.00	
<b>XYZ</b>	<b>G/L Account:</b> 555-000-300		Rent		300.00	
<b>Check 000001 Total:</b> 600.00      0.00      600.00      600.00						
<b>Bank ID Total:</b> 600.00      0.00      600.00      600.00						
<b>Report Total:</b> 600.00      0.00      600.00      600.00						

**Accounts Payable Manual Check Register - Recap By Division**  
Journal Posting Date: 10/20/2010  
Register Number: MC-000003

**ABC Distribution and Service Corp. (ABC)**

G/L Account	Description	Debit	Credit
<b>ABC</b>			
Division Number: 01 TRADE ACCOUNTS PAYABLE			
101-01-00	Cash in bank - Reg. checking		600.00
111-00-00	Due From Subsidiary	500.00	
555-00-03	Rent	100.00	
<b>Division 01 Total:</b>		600.00	600.00
<b>EEC</b>			
Division Number: 01 TRADE ACCOUNTS PAYABLE			
204-00-00	Due to ABC Corporate Offices		200.00
540-00-00	Rent	200.00	
<b>Division 01 Total:</b>		200.00	200.00
<b>XYZ</b>			
Division Number: 01 TRADE ACCOUNTS PAYABLE			
200-020-000	Due to ABC Corporate		300.00
555-000-300	Rent	300.00	
<b>Division 01 Total:</b>		300.00	300.00

## A/P Repetitive Invoice Entry

Repetitive Invoice Line Entry has been modified to accept the Company Code. If this option has been selected in the **APMU** Options screen, Repetitive Invoice Line Entry behaves identically to Manual Check Entry.

	Company	G/L Account	Amount	Comment
1	ABC	555-00-03	500.00	Nov Rent
2	EEC	540-00-00	300.00	Nov Rent
3	XYZ	555-000-300	200.00	Nov Rent
4	XYZ		.00	

Quick Row: 4

Description: [Empty]

Distribution Balance: 0.00    Total: 1,000.00

Buttons: Accept, Cancel, Delete, Print, Help

## System Date Considerations

The **APMU** module checks the System Date for compatibility with the Current Company's General Ledger module. It does not, however, check other companies for System Date compatibility, if inter-company allocations are being made. In other words, if a System Date of 12/31/2000 is entered into an Invoice Header, the programs check the current company's General Ledger module, to confirm that 12/31/2000 is not a prior period.

If lines are subsequently entered into that Invoice that contain other Company codes, the Invoice Line Entry program does not check each Company's General Ledger to see if 12/31/2000 is a prior period. That would slow down line entry considerably. It is up to the user and accounts payable supervisor to ensure that all companies' General Ledgers are maintained consistently, with regard to Period End closing.

**A/P Trial Balance Report**

This report has been modified to include a new Company Code field to line detail. The Company Code and Segment have been added to the Selection Ranges. If a Company and/or Segment range is chosen, all printed amounts associated with the Open Invoice will reflect what was posted to that Company Code/GL Account.

**Accounts Payable Trial Balance**  
All Open Invoices as of 10/20/2010

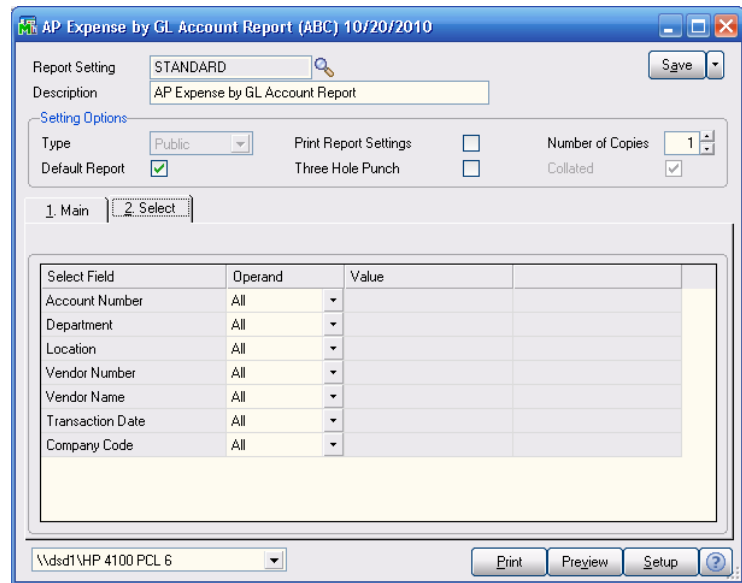
**ABC Distribution and Service Corp. (ABC)**

Division Number: 01 TRADE ACCOUNTS PAYABLE

Vendor Invoice Number	Invoice Date	Discmt	Hold	Invoice Amount	Discount Amount	Invoice Balance	Type	Transaction Date	Transaction Amount	Check Number	Check Date
AIRWAY A Invo Property											
0000106020	5/15/2010	5/30/2010	No	1,750.00	0.00	1,750.00	INV	5/15/2010	1,750.00		
		Company: ABC	GL: 555-00-03		Rent						1,750.00
0000106145	5/17/2010	5/30/2010	No	1,800.00	0.00	1,800.00	INV	5/17/2010	1,800.00		
		Company: ABC	GL: 500-00-00		Other expenses (history)						1,800.00
0001053190	5/31/2010	6/10/2010	No	3,500.00	0.00	3,500.00	INV	5/31/2010	3,500.00		
10201001	10/20/2010	10/30/2010	No	650.00	0.00	650.00	INV	10/15/2010	650.00		
		Company: ABC	GL: 555-00-03		Rent						100.00
		EEC	540-00-00		Rent						300.00
		XYZ	555-000-300		Rent						250.00
JUNE-4913	5/31/2010	6/30/2010	No	25,000.00	0.00	25,000.00	INV	5/31/2010	25,000.00		
				<b>Vendor AIRWAY Totals:</b>	0.00	32,500.00			32,500.00		
				<b>Division 01 Totals:</b>	0.00	32,500.00			32,500.00		
				<b>Report Totals:</b>	0.00	32,500.00			32,500.00		

### A/P Expense by G/L Account Report

This report has been modified to include a new Company Code field in the Selection screen as shown. The user may specify the Company Code, which is used for reporting purposes. An "All" checkbox has been added: when checked, the report is sorted grouped by company.



### Invoice History Report

This report has been modified to include the Company Code associated with each General Ledger Distribution.

Accounts Payable Invoice History Report						ABC Distribution and Service Corp. (ABC)		
Sorted by Invoice Number								
Invoice Number	Invoice Date	Source	Vendor Number	Name				
10201001	INV 10/20/2010	A/P	01-AIRWAY	Airway Property				
Comp	Account Number	Description	Quantity	Unit Cost/ Hourly Rate	Extension			
ABC	555-00-03	Rent				100.00		
Comment:		Rental payment						
EEC	540-00-00	Rent				300.00		
Comment:		Rental payment						
XYZ	555-000-300	Rent				250.00		
Comment:		Rent						
<b>Invoice Total:</b>						<u>650.00</u>		
<b>Report Total:</b>						<u>650.00</u>		

### *Daily Transaction Registers*

Please be aware that although the Accounts Payable Updates prompt the User to run the Daily Transaction Journal, this is the Journal for the current company only, and does not print or post to the General Ledger of another company, whether or not the User just updated inter-company distributions. In order for those inter-company transactions to be updated into the other companies' General Ledgers, **the User must access those other companies individually**, and run the Daily Transaction Register for each.

### ***Using Company Copy with APMU***

The user must be extremely careful when using the Company Copy to transfer Invoice entry records between companies. When Invoices are entered into an A/P system in which APMU has been installed, each and every distribution line contains the Company Code to which you're posting that distribution. If you have entered Invoices for the "ABC" Company, and you haven't made any inter-company entries, then all of the lines will naturally be tagged as "ABC" company distributions.

The problem occurs when Company Copy is used to transfer these entries to another company, (for example "XYZ") possibly for testing purposes. SUDATA **does not** change each line's ABC Company Code to XYZ, so the new XYZ Company now has a batch of invoice entries that are all tagged to post to the ABC Company, **not** to the XYZ Company. **If SUDATA is used for such transfers, the user must access each Invoice Entry record, and change the Company Code field to the correct value.**

Also, when Company Copy is used for a transfer, the Inter-company Account Maintenance file will not be setup correctly for the XYZ Company. It will be setup for the ABC Company, and this will also cause unexpected results.

## Section E: What's New?

---

### Version 3.61

1. Prior to version 3.61, the **Multi-Company Options** were on a separate Folder in A/P Options. In version 3.61, the Multi-Company Options were moved to a button/pop-up on the additional panel. Please refer to **Section C: Setup** for this change.
2. If the **Systems Date Override** setting in **Multi-Company Options** is set to **Yes**, then the System Date for each invoice is now printed on the A/P Invoice Register.
3. If the **Systems Date Override** setting in **Multi-Company Options** is set to **Yes**, then the System Date is checked to make sure it doesn't fall in a closed GL period during Invoice Data Entry.

### Version 3.70

1. Transfer of Invoices from Credit Card Vendors is disabled if you select a "subsidiary" company code during data entry.

### Version 3.71

No new features have been added to this release. A new section has been added to the User Manual: **Appendix A**.

### Version 3.71 – 08/01/2003

APMU has been enhanced to allow Inter-Company transactions for a company that has Job Cost integrated, except for Manual Check Entry.

The AP Trial Balance has been enhanced to allow selection of a range of Company Code and GL Segment. All numbers associated with the Open Invoice will be re-calculated to print only the amounts attached to the Company Codes/GL Segments in the selected ranges.

### Version 3.71 – 01/29/2004

The Trial Balance Report has been enhanced to allow entry of a Company Code Range and Segment Code Range. This will allow the user to print amounts that are specific to a Company or G/L Account Segment Code.

***Version 3.71 – Revision 05/28/2004***

In this revision, APMU has been enhanced for MAS200 SQL.

***Version 4.00***

In this revision, APMU has been enhanced to handle large G/L Account Numbers and Segments. The new feature added to the Trial Balance in version 3.71 – 01/29/2004, has been removed.

***Version 4.05***

No new features have been added to this release.

***Version 4.10***

No new features have been added to this release.

***Version 4.20***

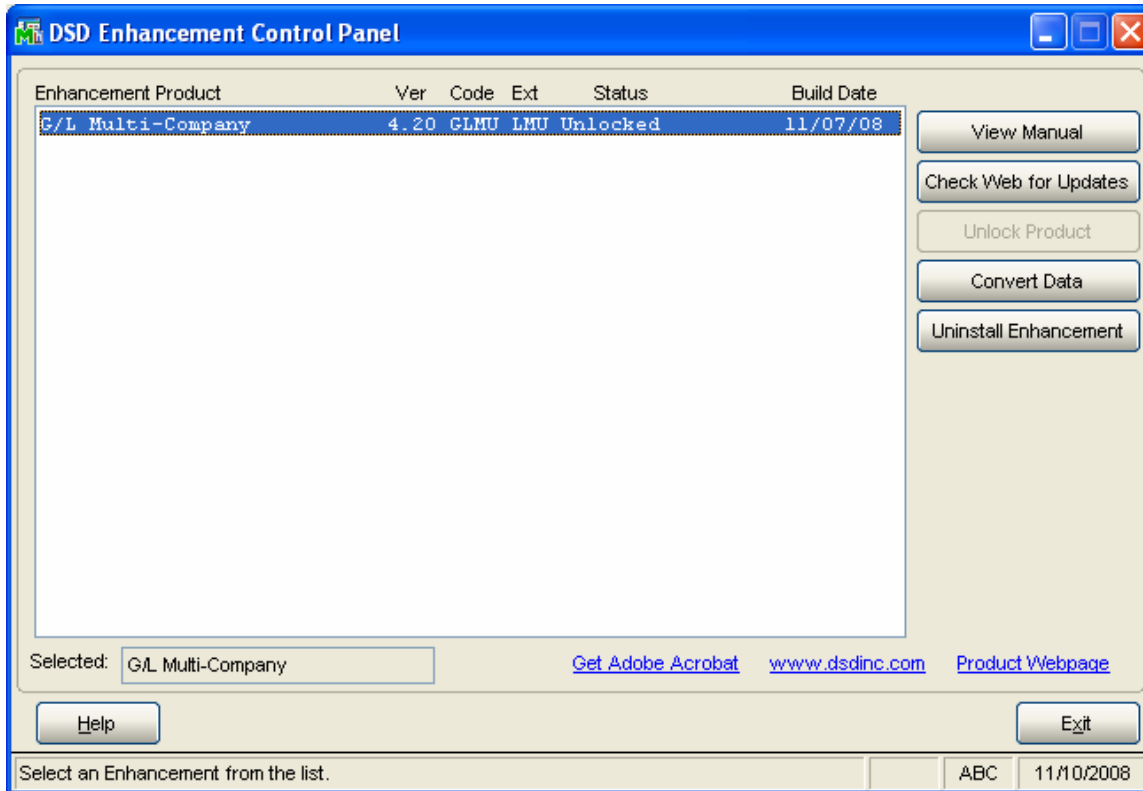
- \* The product has been re-written in the new MAS90 Business Object framework.
- \* The “Distribute Discounts to Subsidiary Companies” option has been removed in this release.
- \* You now have the ability to do inter-company transactions in Manual Check Entry with Job Cost integrated.

***Version 4.30***

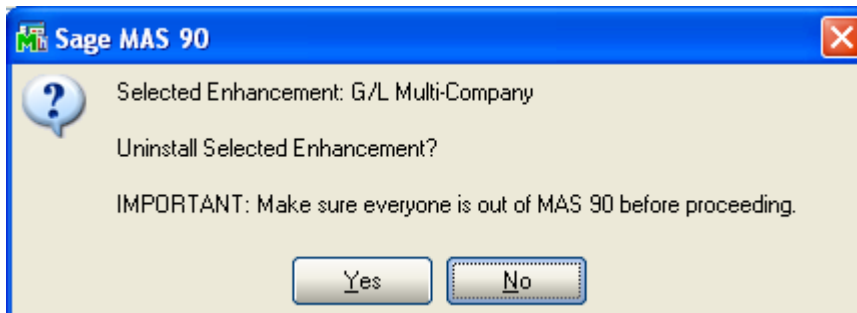
No new features have been added to this release.

## Section F: Uninstall DSD Enhancements

A DSD Enhancements Uninstall Utility has been provided for the purposes of removing DSD Enhancements from your MAS 90/200 System. This utility may be accessed from the **DSD Enhancement Control Panel** menu option on the **Library Master / Utilities** menu.

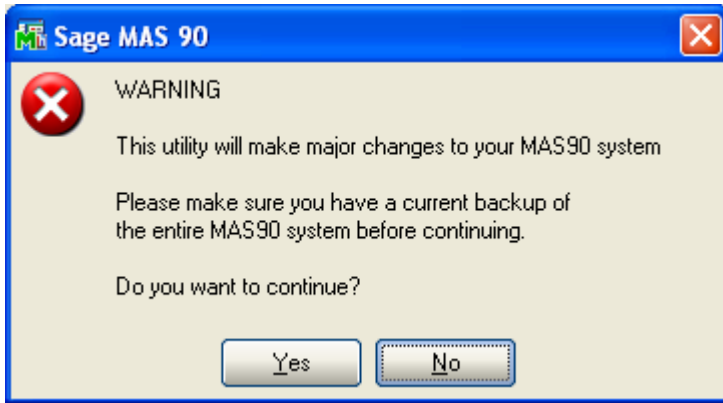


When accessing the **DSD Utility Suite**, select the enhancement that you wish to Uninstall, and then select the **Uninstall Enhancement** button. The following message box will appear:



Select **No** to exit the Uninstall Process.  
 Select **Yes** to continue with the Uninstall Process.

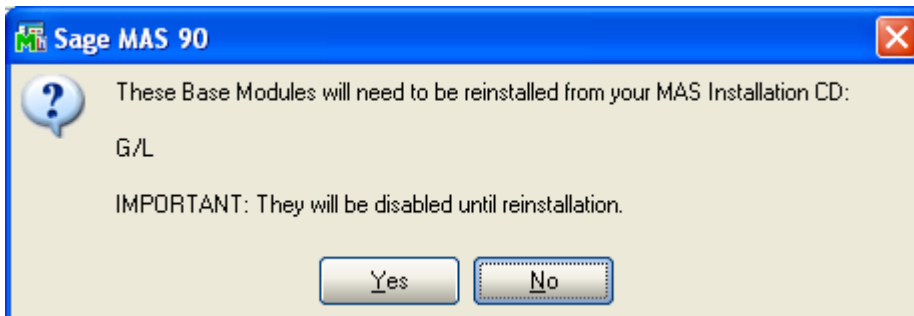
The following message box will appear, to remind you that a complete backup of your entire MAS90 system should be completed prior to uninstalling a DSD product.



Select **No** to exit the Uninstall Process.  
Select **Yes** to continue with the Uninstall Process.

**After the Uninstall of the DSD Enhancement, you MUST reinstall certain standard MAS 90/200 modules, followed by reinstallation of MAS Service Packs / Updates, if applicable.**

The following message box will appear, and will display which of those specific MAS 90/200 modules you must reinstall afterwards.

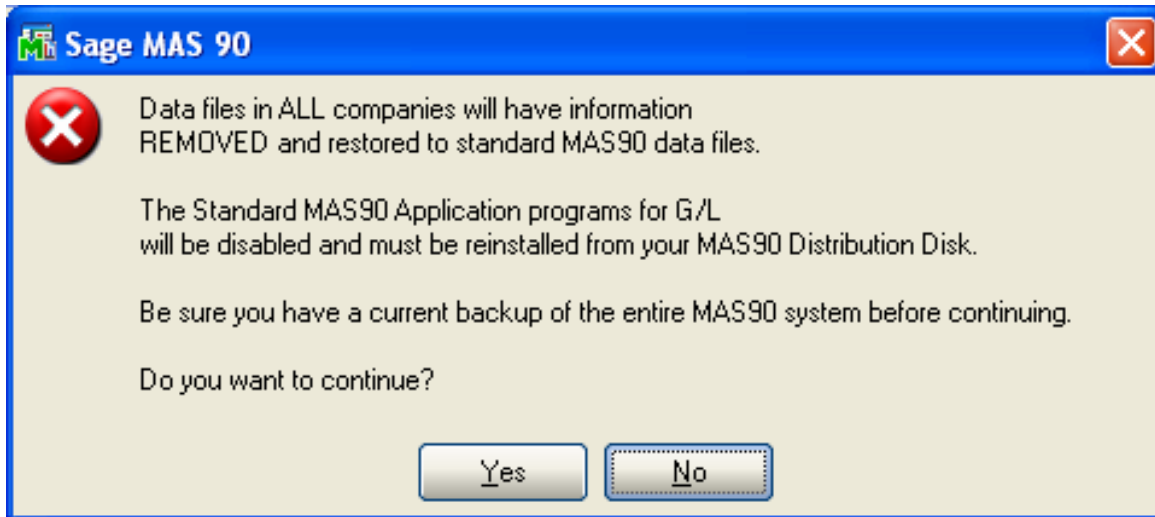


Select **No** to exit the Uninstall Process.  
Select **Yes** to continue with the Uninstall Process.

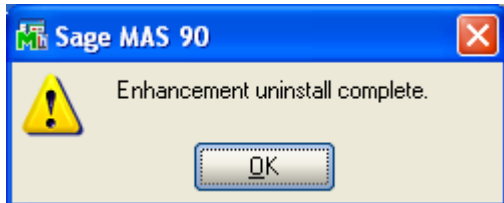
The following message box will appear, displaying the final warning message.

Select **No** to exit the Uninstall Process.

Select **Yes** to continue with the Uninstall Process. At this point, the DSD Enhancement will be removed from the MAS 90/200 system.



After completion of the Uninstall, the following message box will appear. Select OK to continue.



Now that the Uninstall process is completed, you must:

- Reinstall the applicable standard MAS 90/200 modules
- Reinstall the latest MAS 90/200 Service Pack/Updates, if applicable.
- Reinstall any other DSD Enhancements or Developer products that are affected from the reinstallation of the standard MAS 90/200 module(s).

## License Agreement

---

**IMPORTANT:** THIS SOFTWARE IS LICENSED BY DSD BUSINESS SYSTEMS, INC. TO CUSTOMERS FOR THEIR USE ONLY IN ACCORDANCE WITH THE TERMS SET FORTH IN THIS CUSTOMER LICENSE AGREEMENT. OPENING OR USING THIS PACKAGE CONSTITUTES ACCEPTANCE OF THESE TERMS. IF THE TERMS OF THIS LICENSE ARE NOT ACCEPTABLE, THE CUSTOMER MAY OBTAIN A FULL REFUND OF ANY MONEY PAID IF THIS UNUSED, UNOPENED PACKAGE IS RETURNED WITHIN TEN (10) DAYS TO THE DEALER FROM WHICH IT WAS ACQUIRED.

1. **LICENSE. DSD BUSINESS SYSTEMS, INC.,** a California corporation as Licensor and owner hereby agrees to grant you as Licensee a non-exclusive license to use the enclosed software subject to the terms and restrictions set forth in this License Agreement. Title in and ownership of all programs and program enhancements or modifications written by DSD Business Systems, Inc. shall remain at all times vested in DSD Business Systems, Inc. The right granted by this Customer License Agreement and your payment of the non-refundable License fee is the right to use the Program in accordance with the terms of this Customer License Agreement. Delivery of a copy of the Program to you is made solely to enable you to exercise this right.
2. **COPYRIGHT.** This Program is copyrighted and all rights are reserved by DSD BUSINESS SYSTEMS, INC. and SAGE, INC. You may not copy or reproduce any part of the Program except to copy the Program for backup purposes. If you make a backup copy you must reproduce and include the copyright notice on it. The distribution of the product is intended for the use of the original Licensee only and for use only on the computer systems specified. Lawful users of this Program are hereby licensed only to read the Program from its medium into the memory of a computer only for the purpose of executing the program.

The documentation is also copyrighted and all rights are reserved. This document may not, in whole or in part, be copied, photocopied, reproduced, translated, transmitted or reduced to any electronic medium of machine readable form without prior consent, in writing, from DSD BUSINESS SYSTEMS, INC.

The Licensee recognizes that DSD BUSINESS SYSTEMS, INC. has expended considerable time, effort and money to develop the licensed Software and Manual and that DSD BUSINESS SYSTEMS, INC. will be substantially damaged by its unauthorized use, sale or distribution. In addition to recovery of all damages and the obtaining of injunctive relief as provided by law, in the event legal action must be taken to enforce this provision, the Licensee will pay DSD BUSINESS SYSTEMS, INC. all reasonable legal fees incurred in enforcing the rights of DSD BUSINESS SYSTEMS, INC. under this provision.

3. **RESTRICTIONS ON USE AND TRANSFER.** The original and any backup copies of the Program and its documentation are to be used only in connection with a single computer or network fileserver. You may physically transfer the Program from one computer to another, provided that the Program is used in connection with only one computer or network fileserver at a time. You may not distribute copies of the Program Documentation to others. The Program is to be used exclusively for business purposes and not for personal, family or household use. YOU MAY NOT USE, COPY, MODIFY, OR TRANSFER THE PROGRAM, IN WHOLE OR IN PART, EXCEPT AS EXPRESSLY PROVIDED FOR IN THIS LICENSE AGREEMENT. IN ADDITION YOU MAY NOT MODIFY, ADAPT, TRANSLATE, REVERSE ENGINEER, DECOMPILE, DISASSEMBLE THE PROGRAM, OR CREATE ANY DERIVATIVE WORK BASED UPON THE PROGRAM.
4. **WARRANTY.** DSD BUSINESS SYSTEMS, INC. software is licensed "as is" with no warranties of any kind, either expressed or implied, other than the following: DSD BUSINESS SYSTEMS will repair any bugs or flaws found in the software. Flaws of a critical nature which affect the basic functionality of the software will be repaired on an "emergency" basis, with a corrected distribution diskette sent via UPS Blue or equal. Flaws of a non-critical or cosmetic nature will be repaired on a timely basis, and a corrected distribution diskette sent via UPS ground or regular mail. All incidental or consequential damages that result from any defect in the software, even if DSD Business Systems, Inc. has been advised of the possibility of such damages will be assumed by you.

5. **LIMITED WARRANTY FOR DISKETTES.** To the original licensee only, DSD BUSINESS SYSTEMS, INC. warrants the magnetic diskette on which the Program is recorded to be free from defects in materials and faulty workmanship under normal use and service for a period of ninety days from the date the Program is delivered. Any implied warranties of merchantability and fitness for a particular purpose are limited in duration to the period of ninety (90) days from the date of delivery. If, during this 90 day period, a defect in the diskette should occur, the diskette may be returned DSD BUSINESS SYSTEMS, INC., 5120 Shoreham Place, Suite 280, San Diego, California, 92122, or to any authorized DSD BUSINESS SYSTEMS, INC. Dealer, and the diskette will be replaced without charge to you, provided that you have previously returned the Warranty Registration Card along with a copy of your sales receipt for the Program.
6. **NO OTHER WARRANTIES.** No dealer or distributor of DSD BUSINESS SYSTEMS, INC. products or any agent of DSD BUSINESS SYSTEMS, INC. is authorized to make any representation of warranty with respect to the Program except those expressly stated in the Customer License Agreement.
7. **LIMITATION OF LIABILITY.** Neither DSD BUSINESS SYSTEMS, INC. nor anyone else who has been involved in the creation, production or delivery of this program shall be liable for any direct, incidental or consequential damages.
8. **TERM.** This license is effective until terminated. You may terminate it at any time by returning the Program and Documentation together with all copies, modifications and merged portions in any form to DSD BUSINESS SYSTEMS, INC. The license will also be terminated by DSD BUSINESS SYSTEMS, INC. immediately and without notice if you fail to comply with any term or condition of this License Agreement.
9. **ACKNOWLEDGMENT.** Your opening this package, use of this program or signature on the warranty registration card acknowledges that you have read this customer license agreement and agree to its terms. You further agree that the license agreement is the complete and exclusive statement of the agreement between yourself and DSD BUSINESS SYSTEMS, INC. and supersedes any proposal or prior agreement, oral or written, and any other communications between yourself and DSD BUSINESS SYSTEMS, INC or dealers and distributors of DSD BUSINESS SYSTEMS, INC products relating to the subject matter of this agreement.
10. **ASSIGNMENT.** You may not sublicense this license or the Program. You may not rent this Program or the use of the Program. You may not transfer this copy of the Program unless the recipient agrees in writing (and a copy of such acceptance is sent to DSD BUSINESS SYSTEMS, INC., 5120 Shoreham Place, Suite 280, San Diego, California, 92122) to accept all of the terms of this Customer License Agreement. Any attempt by you to otherwise rent, sublicense, assign or transfer any of the rights, duties or obligation hereunder is void and may be the cause for immediate termination of the license. DSD BUSINESS SYSTEMS, INC. may assign any of its rights and obligation under this agreement to any party without notice to you.

## Fax Transmittal Form

---

To:	<i>DSD Business Systems Customer Service</i>		Fax:	<i>858/550-4900</i>
From:	Name:		Phone:	
	Company:		Fax:	
Date:	/ /	# Pgs Including this Page:		
Subject:	Check One: <input type="checkbox"/> Product Problem <input type="checkbox"/> Suggestions			
Product:	<i>APMU Accounts Payable Multi-Company</i>		Version:	<i>4.30</i>

This page may be copied